

EXTRACTION OIL & GAS

WELD COUNTY, COLORADO (NAD 83)

SEC. 14 T2N R68W 6th P.M.

BYBEE 2

ORIGINAL WELLBORE

29 July, 2015

Plan: PROPOSAL #4

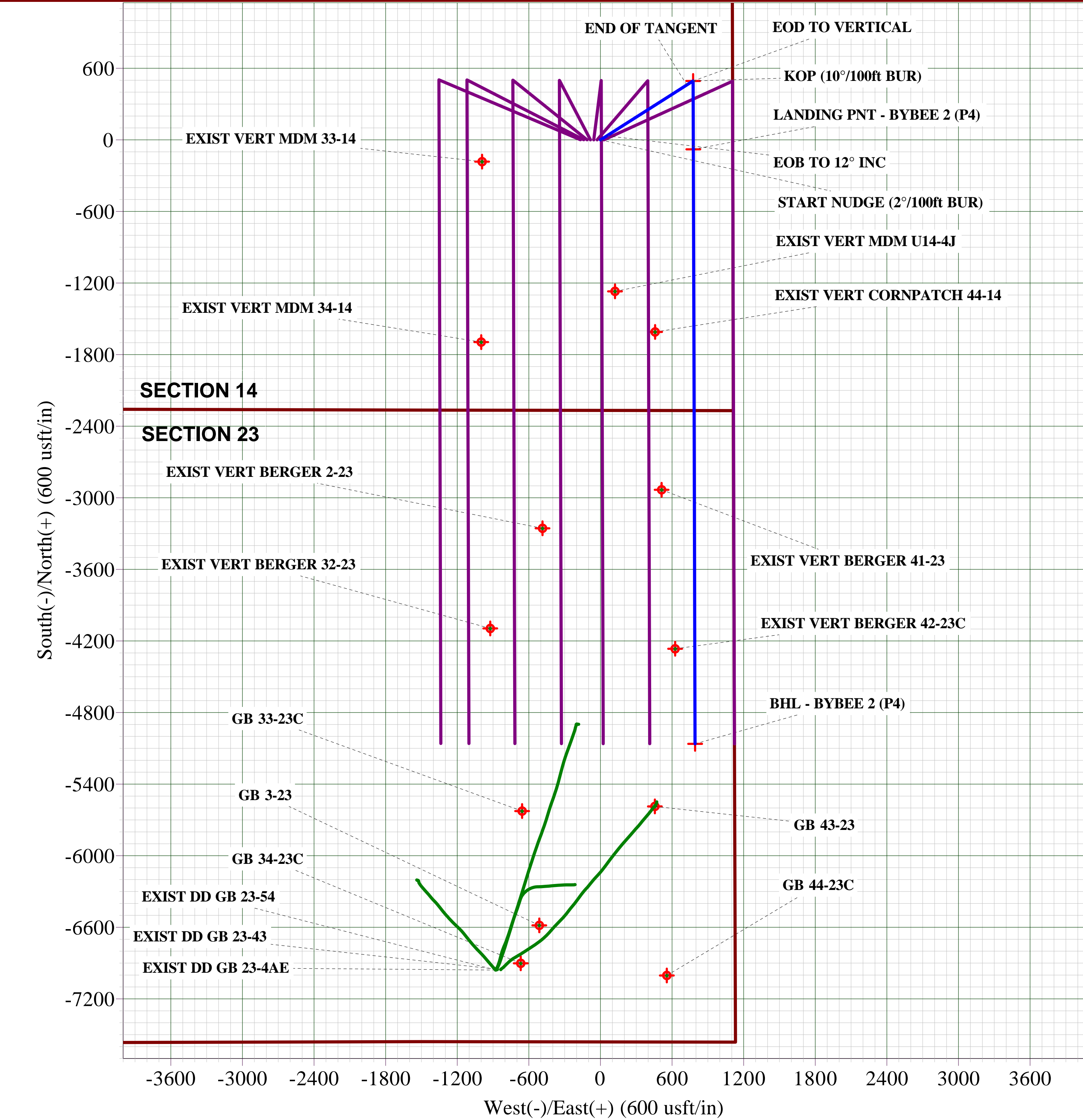
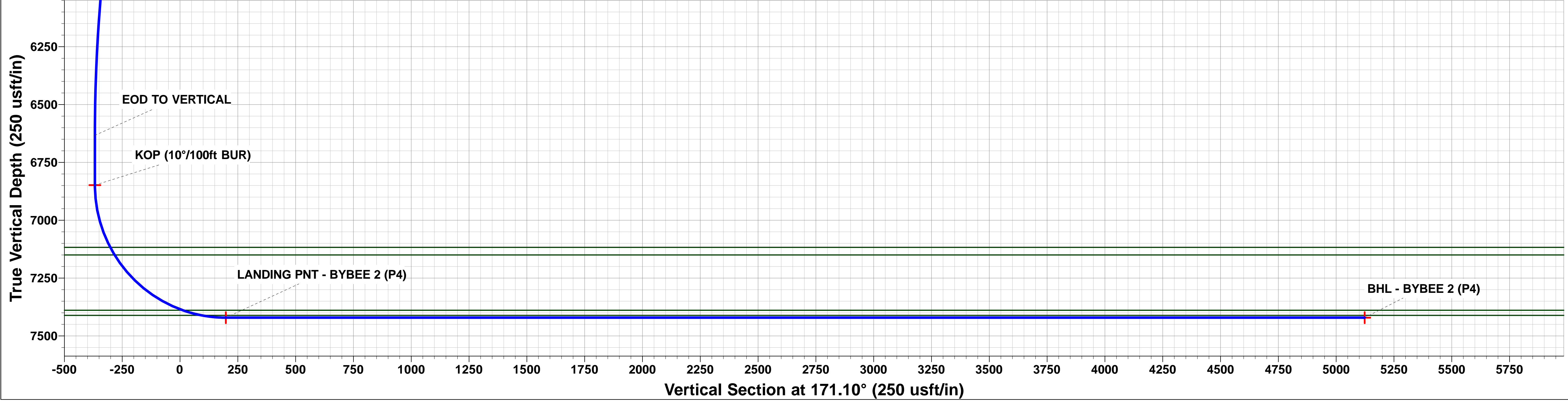
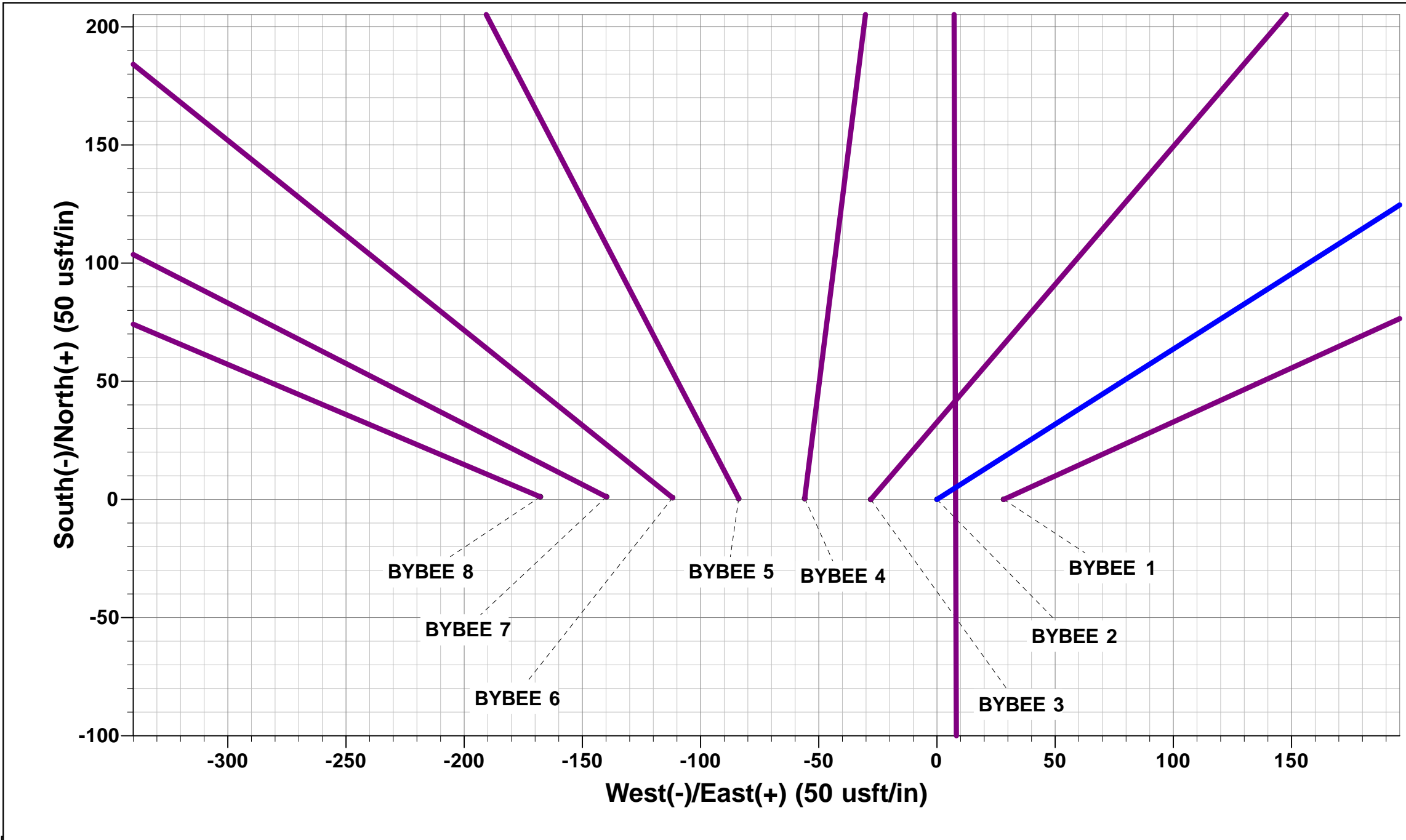
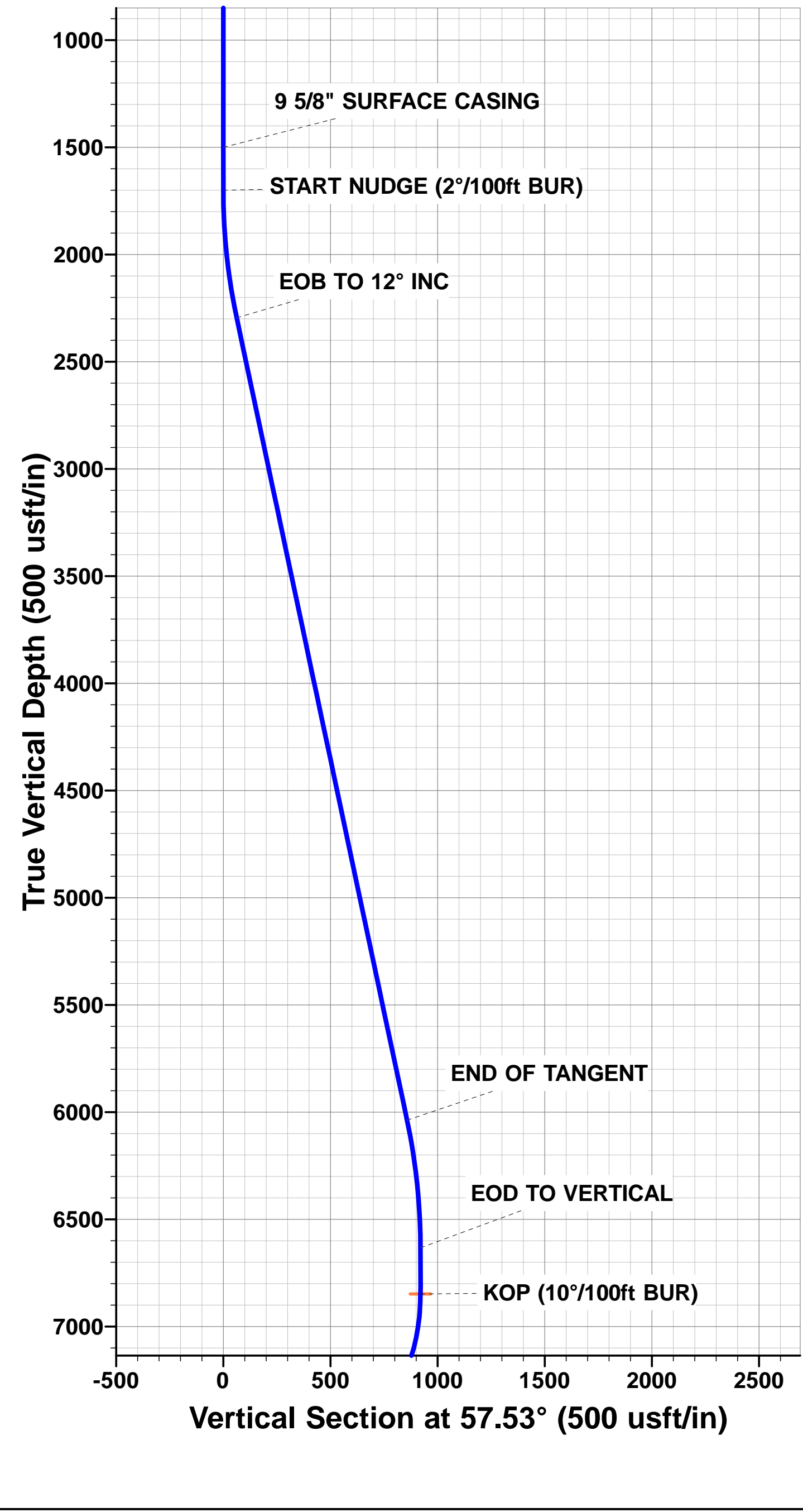




Project: WELD COUNTY, COLORADO (NAD 83)
Site: SEC. 14 T2N R68W 6th P.M.
Well: BYBEE 2
Wellbore: ORIGNAL WELLBORE
Design: PROPOSAL #4

ANNOTATIONS									FORMATION TOP DETAILS		
TVD	MD	Inc	Azi	+N/-S	+E/-W	VSect	Dep	Annotation	TVDPath	MDPath	Formation
1500.0	1500.0	0.00	0.00	0.0	0.0	0.0	0.0	9 5/8" SURFACE CASING	3559.0	3591.6	PARKMAN
1700.0	1700.0	0.00	0.00	0.0	0.0	0.0	0.0	START NUDGE (2°/100ft BUR)	4377.0	4427.8	SUSSEX
2295.4	2299.8	12.00	57.53	33.6	52.8	-25.0	62.6	EOB TO 12° INC	4933.0	4996.3	SHANNON
6037.6	6125.5	12.00	57.53	460.4	723.6	-342.9	857.7	END OF TANGENT	7117.0	7220.3	SHARON SPRINGS
6633.0	6725.3	0.00	0.00	494.0	776.4	-367.9	920.2	EOD TO VERTICAL	7150.0	7258.4	NIOBRARA
6848.0	6940.3	0.00	0.00	494.0	776.4	-367.9	920.2	KOP (10°/100ft BUR)	7389.0	7647.9	FT HAYS
7421.0	7840.4	90.00	179.83	-79.0	778.1	1493.3		LANDING PNT - BYBEE 2 (P4)	7411.0	7733.1	CODELL
7421.0	12823.2	90.00	179.83	-5061.8	792.8	5123.5	6476.1	BHL - BYBEE 2 (P4)			

WELLBORE TARGET DETAILS (LAT/LONG)					
Name	TVD	+N/-S	+E/-W	Latitude	Longitude
KOP - BYBEE 2 (P4)	6848.0	494.0	776.4	40.139017	-104.962196
BHL - BYBEE 2 (P4)	7421.0	-5061.8	792.8	40.123766	-104.962138
LANDING PNT - BYBEE 2 (P4)	7421.0	-79.0	778.1	40.137444	-104.962190



Planning Report



Database:	EDM 5000.1 Single User Db	Local Co-ordinate Reference:	Well BYBEE 2
Company:	EXTRACTION OIL & GAS	TVD Reference:	KB-EST @ 4905.0usft
Project:	WELD COUNTY, COLORADO (NAD 83)	MD Reference:	KB-EST @ 4905.0usft
Site:	SEC. 14 T2N R68W 6th P.M.	North Reference:	True
Well:	BYBEE 2	Survey Calculation Method:	Minimum Curvature
Wellbore:	ORIGINAL WELLBORE		
Design:	PROPOSAL #4		

Project	WELD COUNTY, COLORADO (NAD 83)		
Map System:	US State Plane 1983	System Datum:	Mean Sea Level
Geo Datum:	North American Datum 1983		
Map Zone:	Colorado Northern Zone		Using geodetic scale factor

Site	SEC. 14 T2N R68W 6th P.M.		
Site Position:		Northing:	1,293,444.96 usft
From:	Lat/Long	Easting:	3,149,614.50 usft
Position Uncertainty:	0.0 usft	Slot Radius:	1.10000ft
		Latitude:	40.137661
		Longitude:	-104.964872
		Grid Convergence:	0.35 °

Well	BYBEE 2		
Well Position	+N/-S	0.0 usft	Northing:
	+E/-W	-28.2 usft	Easting:
Position Uncertainty	0.0 usft	Wellhead Elevation:	usft
		Latitude:	40.137661
		Longitude:	-104.964973
		Ground Level:	4,889.0 usft

Wellbore	ORIGINAL WELLBORE				
Magnetics	Model Name	Sample Date	Declination (°)	Dip Angle (°)	Field Strength (nT)
	IGRF2015	29/07/2015	8.49	66.66	52,448

Design	PROPOSAL #4			
Audit Notes:				
Version:	Phase:	PROTOTYPE	Tie On Depth:	0.0
Vertical Section:	Depth From (TVD) (usft)	+N/-S (usft)	+E/-W (usft)	Direction (°)
	0.0	0.0	0.0	171.10

Plan Sections											
MD (usft)	Inc (°)	Azi (°)	Vertical Depth	SS (usft)	+N/-S (usft)	+E/-W (usft)	Dogleg Rate (°/100usf)	Build Rate (°/100usf)	Turn Rate (°/100usf)	TFO (°)	Target
0.0	0.00	0.00	0.0	-4,905.0	0.0	0.0	0.00	0.00	0.00	0.00	
1,700.0	0.00	0.00	1,700.0	-3,205.0	0.0	0.0	0.00	0.00	0.00	0.00	
2,299.8	12.00	57.53	2,295.4	-2,609.6	33.6	52.8	2.00	2.00	0.00	57.53	
6,125.5	12.00	57.53	6,037.6	1,132.6	460.4	723.6	0.00	0.00	0.00	0.00	
6,725.3	0.00	0.00	6,633.0	1,728.0	494.0	776.4	2.00	-2.00	0.00	180.00	
6,940.3	0.00	0.00	6,848.0	1,943.0	494.0	776.4	0.00	0.00	0.00	0.00	KOP - BYBEE 2 (P4
7,840.4	90.00	179.83	7,421.0	2,516.0	-79.0	778.1	10.00	10.00	19.98	179.83	LANDING PNT - BY
12,823.2	90.00	179.83	7,421.0	2,516.0	-5,061.8	792.8	0.00	0.00	0.00	119.59	BHL - BYBEE 2 (P4

Planning Report



Database:	EDM 5000.1 Single User Db	Local Co-ordinate Reference:	Well BYBEE 2
Company:	EXTRACTION OIL & GAS	TVD Reference:	KB-EST @ 4905.0usft
Project:	WELD COUNTY, COLORADO (NAD 83)	MD Reference:	KB-EST @ 4905.0usft
Site:	SEC. 14 T2N R68W 6th P.M.	North Reference:	True
Well:	BYBEE 2	Survey Calculation Method:	Minimum Curvature
Wellbore:	ORIGINAL WELLBORE		
Design:	PROPOSAL #4		

Planned Survey										
MD (usft)	Inc (°)	Azi (°)	TVD (usft)	SS (usft)	+N/-S (usft)	+E/-W (usft)	Vertical Section (usft)	Dogleg Rate (°/100usft)	Build Rate (°/100usft)	Turn Rate (°/100usft)
0.0	0.00	0.00	0.0	4,905.00	0.0	0.0	0.0	0.00	0.00	0.00
100.0	0.00	0.00	100.0	4,805.00	0.0	0.0	0.0	0.00	0.00	0.00
200.0	0.00	0.00	200.0	4,705.00	0.0	0.0	0.0	0.00	0.00	0.00
300.0	0.00	0.00	300.0	4,605.00	0.0	0.0	0.0	0.00	0.00	0.00
400.0	0.00	0.00	400.0	4,505.00	0.0	0.0	0.0	0.00	0.00	0.00
500.0	0.00	0.00	500.0	4,405.00	0.0	0.0	0.0	0.00	0.00	0.00
600.0	0.00	0.00	600.0	4,305.00	0.0	0.0	0.0	0.00	0.00	0.00
700.0	0.00	0.00	700.0	4,205.00	0.0	0.0	0.0	0.00	0.00	0.00
800.0	0.00	0.00	800.0	4,105.00	0.0	0.0	0.0	0.00	0.00	0.00
900.0	0.00	0.00	900.0	4,005.00	0.0	0.0	0.0	0.00	0.00	0.00
1,000.0	0.00	0.00	1,000.0	3,905.00	0.0	0.0	0.0	0.00	0.00	0.00
1,100.0	0.00	0.00	1,100.0	3,805.00	0.0	0.0	0.0	0.00	0.00	0.00
1,200.0	0.00	0.00	1,200.0	3,705.00	0.0	0.0	0.0	0.00	0.00	0.00
1,300.0	0.00	0.00	1,300.0	3,605.00	0.0	0.0	0.0	0.00	0.00	0.00
1,400.0	0.00	0.00	1,400.0	3,505.00	0.0	0.0	0.0	0.00	0.00	0.00
9 5/8" SURFACE CASING										
1,500.0	0.00	0.00	1,500.0	3,405.00	0.0	0.0	0.0	0.00	0.00	0.00
1,600.0	0.00	0.00	1,600.0	3,305.00	0.0	0.0	0.0	0.00	0.00	0.00
START NUDGE (2°/100ft BUR)										
1,700.0	0.00	0.00	1,700.0	3,205.00	0.0	0.0	0.0	0.00	0.00	0.00
1,800.0	2.00	57.53	1,800.0	3,105.02	0.9	1.5	-0.7	2.00	2.00	0.00
1,900.0	4.00	57.53	1,899.8	3,005.16	3.7	5.9	-2.8	2.00	2.00	0.00
2,000.0	6.00	57.53	1,999.5	2,905.55	8.4	13.2	-6.3	2.00	2.00	0.00
2,100.0	8.00	57.53	2,098.7	2,806.30	15.0	23.5	-11.1	2.00	2.00	0.00
2,200.0	10.00	57.53	2,197.5	2,707.53	23.4	36.7	-17.4	2.00	2.00	0.00
EOB TO 12" INC										
2,299.8	12.00	57.53	2,295.4	2,609.57	33.6	52.8	-25.0	2.00	2.00	0.00
2,300.0	12.00	57.53	2,295.6	2,609.38	33.6	52.8	-25.0	0.00	0.00	0.00
2,400.0	12.00	57.53	2,393.4	2,511.56	44.8	70.4	-33.3	0.00	0.00	0.00
2,500.0	12.00	57.53	2,491.3	2,413.74	55.9	87.9	-41.6	0.00	0.00	0.00
2,600.0	12.00	57.53	2,589.1	2,315.93	67.1	105.4	-50.0	0.00	0.00	0.00
2,700.0	12.00	57.53	2,686.9	2,218.11	78.2	123.0	-58.3	0.00	0.00	0.00
2,800.0	12.00	57.53	2,784.7	2,120.29	89.4	140.5	-66.6	0.00	0.00	0.00
2,900.0	12.00	57.53	2,882.5	2,022.48	100.5	158.0	-74.9	0.00	0.00	0.00
3,000.0	12.00	57.53	2,980.3	1,924.66	111.7	175.6	-83.2	0.00	0.00	0.00
3,100.0	12.00	57.53	3,078.2	1,826.85	122.9	193.1	-91.5	0.00	0.00	0.00
3,200.0	12.00	57.53	3,176.0	1,729.03	134.0	210.6	-99.8	0.00	0.00	0.00
3,300.0	12.00	57.53	3,273.8	1,631.21	145.2	228.2	-108.1	0.00	0.00	0.00
3,400.0	12.00	57.53	3,371.6	1,533.40	156.3	245.7	-116.4	0.00	0.00	0.00
3,500.0	12.00	57.53	3,469.4	1,435.58	167.5	263.2	-124.7	0.00	0.00	0.00
PARKMAN										
3,591.6	12.00	57.53	3,559.0	1,346.00	177.7	279.3	-132.3	0.00	0.00	0.00
3,600.0	12.00	57.53	3,567.2	1,337.76	178.6	280.8	-133.0	0.00	0.00	0.00
3,700.0	12.00	57.53	3,665.1	1,239.95	189.8	298.3	-141.4	0.00	0.00	0.00
3,800.0	12.00	57.53	3,762.9	1,142.13	201.0	315.8	-149.7	0.00	0.00	0.00
3,900.0	12.00	57.53	3,860.7	1,044.31	212.1	333.4	-158.0	0.00	0.00	0.00
4,000.0	12.00	57.53	3,958.5	946.50	223.3	350.9	-166.3	0.00	0.00	0.00
4,100.0	12.00	57.53	4,056.3	848.68	234.4	368.4	-174.6	0.00	0.00	0.00
4,200.0	12.00	57.53	4,154.1	750.87	245.6	386.0	-182.9	0.00	0.00	0.00
4,300.0	12.00	57.53	4,252.0	653.05	256.7	403.5	-191.2	0.00	0.00	0.00
4,400.0	12.00	57.53	4,349.8	555.23	267.9	421.1	-199.5	0.00	0.00	0.00
SUSSEX										
4,427.8	12.00	57.53	4,377.0	528.00	271.0	425.9	-201.8	0.00	0.00	0.00
4,500.0	12.00	57.53	4,447.6	457.42	279.1	438.6	-207.8	0.00	0.00	0.00

Planning Report



Database:	EDM 5000.1 Single User Db	Local Co-ordinate Reference:	Well BYBEE 2
Company:	EXTRACTION OIL & GAS	TVD Reference:	KB-EST @ 4905.0usft
Project:	WELD COUNTY, COLORADO (NAD 83)	MD Reference:	KB-EST @ 4905.0usft
Site:	SEC. 14 T2N R68W 6th P.M.	North Reference:	True
Well:	BYBEE 2	Survey Calculation Method:	Minimum Curvature
Wellbore:	ORIGINAL WELLBORE		
Design:	PROPOSAL #4		

Planned Survey										
MD (usft)	Inc (°)	Azi (°)	TVD (usft)	SS (usft)	+N/-S (usft)	+E/-W (usft)	Vertical Section (usft)	Dogleg Rate (°/100usft)	Build Rate (°/100usft)	Turn Rate (°/100usft)
4,600.0	12.00	57.53	4,545.4	359.60	290.2	456.1	-216.1	0.00	0.00	0.00
4,700.0	12.00	57.53	4,643.2	261.78	301.4	473.7	-224.4	0.00	0.00	0.00
4,800.0	12.00	57.53	4,741.0	163.97	312.5	491.2	-232.8	0.00	0.00	0.00
4,900.0	12.00	57.53	4,838.8	66.15	323.7	508.7	-241.1	0.00	0.00	0.00
SHANNON										
4,996.3	12.00	57.53	4,933.0	-28.00	334.4	525.6	-249.1	0.00	0.00	0.00
5,000.0	12.00	57.53	4,936.7	-31.67	334.8	526.3	-249.4	0.00	0.00	0.00
5,100.0	12.00	57.53	5,034.5	-129.48	346.0	543.8	-257.7	0.00	0.00	0.00
5,200.0	12.00	57.53	5,132.3	-227.30	357.2	561.3	-266.0	0.00	0.00	0.00
5,300.0	12.00	57.53	5,230.1	-325.11	368.3	578.9	-274.3	0.00	0.00	0.00
5,400.0	12.00	57.53	5,327.9	-422.93	379.5	596.4	-282.6	0.00	0.00	0.00
5,500.0	12.00	57.53	5,425.7	-520.75	390.6	613.9	-290.9	0.00	0.00	0.00
5,600.0	12.00	57.53	5,523.6	-618.56	401.8	631.5	-299.2	0.00	0.00	0.00
5,700.0	12.00	57.53	5,621.4	-716.38	412.9	649.0	-307.5	0.00	0.00	0.00
5,800.0	12.00	57.53	5,719.2	-814.20	424.1	666.5	-315.9	0.00	0.00	0.00
5,900.0	12.00	57.53	5,817.0	-912.01	435.3	684.1	-324.2	0.00	0.00	0.00
6,000.0	12.00	57.53	5,914.8	-1,009.83	446.4	701.6	-332.5	0.00	0.00	0.00
6,100.0	12.00	57.53	6,012.6	-1,107.65	457.6	719.1	-340.8	0.00	0.00	0.00
END OF TANGENT										
6,125.5	12.00	57.53	6,037.6	-1,132.59	460.4	723.6	-342.9	0.00	0.00	0.00
6,200.0	10.51	57.53	6,110.7	-1,205.65	468.2	735.9	-348.7	2.00	-2.00	0.00
6,300.0	8.51	57.53	6,209.3	-1,304.28	477.1	749.8	-355.3	2.00	-2.00	0.00
6,400.0	6.51	57.53	6,308.4	-1,403.41	484.1	760.8	-360.5	2.00	-2.00	0.00
6,500.0	4.51	57.53	6,407.9	-1,502.95	489.2	768.9	-364.4	2.00	-2.00	0.00
6,600.0	2.51	57.53	6,507.8	-1,602.76	492.5	774.1	-366.8	2.00	-2.00	0.00
6,700.0	0.51	57.53	6,607.7	-1,702.72	493.9	776.3	-367.9	2.00	-2.00	0.00
EOD TO VERTICAL										
6,725.3	0.00	0.00	6,633.0	-1,728.02	494.0	776.4	-367.9	2.00	-2.00	0.00
6,800.0	0.00	0.00	6,707.7	-1,802.72	494.0	776.4	-367.9	0.00	0.00	0.00
6,900.0	0.00	0.00	6,807.7	-1,902.72	494.0	776.4	-367.9	0.00	0.00	0.00
KOP (10°/100ft BUR)										
6,940.3	0.00	0.00	6,848.0	-1,943.02	494.0	776.4	-367.9	0.00	0.00	0.00
7,000.0	5.97	179.83	6,907.6	-2,002.61	490.9	776.4	-364.8	10.00	10.00	0.00
7,100.0	15.97	179.83	7,005.7	-2,100.66	471.9	776.5	-346.0	10.00	10.00	0.00
7,200.0	25.97	179.83	7,098.9	-2,193.91	436.1	776.6	-310.7	10.00	10.00	0.00
SHARON SPRINGS										
7,220.3	28.00	179.83	7,117.0	-2,212.00	426.9	776.6	-301.6	10.00	10.00	0.00
NIORARA										
7,258.4	31.81	179.83	7,150.0	-2,245.00	408.0	776.7	-282.9	10.00	10.00	0.00
7,300.0	35.97	179.83	7,184.6	-2,279.55	384.7	776.7	-259.9	10.00	10.00	0.00
7,400.0	45.97	179.83	7,260.0	-2,354.96	319.3	776.9	-195.2	10.00	10.00	0.00
7,500.0	55.97	179.83	7,322.9	-2,417.86	241.7	777.2	-118.5	10.00	10.00	0.00
7,600.0	65.97	179.83	7,371.3	-2,466.33	154.4	777.4	-32.2	10.00	10.00	0.00
FT HAYS										
7,647.9	70.76	179.83	7,389.0	-2,484.00	109.8	777.6	11.8	10.00	10.00	0.00
7,700.0	75.97	179.83	7,403.9	-2,498.90	60.0	777.7	61.1	10.00	10.00	0.00
CODELL										
7,733.1	79.28	179.83	7,411.0	-2,506.00	27.6	777.8	93.1	10.00	10.00	0.00
7,800.0	85.97	179.83	7,419.6	-2,514.58	-38.7	778.0	158.6	10.00	10.00	0.00
LANDING PNT - BYBEE 2 (P4)										
7,840.4	90.00	179.83	7,421.0	-2,516.00	-79.0	778.1	198.5	9.99	9.99	0.00
7,900.0	90.00	179.83	7,421.0	-2,516.00	-138.6	778.3	257.4	0.00	0.00	0.00
8,000.0	90.00	179.83	7,421.0	-2,515.99	-238.6	778.6	356.3	0.00	0.00	0.00

Planning Report



Database:	EDM 5000.1 Single User Db	Local Co-ordinate Reference:	Well BYBEE 2
Company:	EXTRACTION OIL & GAS	TVD Reference:	KB-EST @ 4905.0usft
Project:	WELD COUNTY, COLORADO (NAD 83)	MD Reference:	KB-EST @ 4905.0usft
Site:	SEC. 14 T2N R68W 6th P.M.	North Reference:	True
Well:	BYBEE 2	Survey Calculation Method:	Minimum Curvature
Wellbore:	ORIGINAL WELLBORE		
Design:	PROPOSAL #4		

Planned Survey										
MD (usft)	Inc (°)	Azi (°)	TVD (usft)	SS (usft)	+N/-S (usft)	+E/-W (usft)	Vertical Section (usft)	Dogleg Rate (°/100usft)	Build Rate (°/100usft)	Turn Rate (°/100usft)
8,100.0	90.00	179.83	7,421.0	-2,515.99	-338.6	778.9	455.1	0.00	0.00	0.00
8,200.0	90.00	179.83	7,421.0	-2,515.99	-438.6	779.2	553.9	0.00	0.00	0.00
8,300.0	90.00	179.83	7,421.0	-2,515.98	-538.6	779.5	652.8	0.00	0.00	0.00
8,400.0	90.00	179.83	7,421.0	-2,515.98	-638.6	779.8	751.6	0.00	0.00	0.00
8,500.0	90.00	179.83	7,421.0	-2,515.98	-738.6	780.1	850.5	0.00	0.00	0.00
8,600.0	90.00	179.83	7,421.0	-2,515.98	-838.6	780.4	949.3	0.00	0.00	0.00
8,700.0	90.00	179.83	7,421.0	-2,515.97	-938.6	780.7	1,048.1	0.00	0.00	0.00
8,800.0	90.00	179.83	7,421.0	-2,515.97	-1,038.6	781.0	1,147.0	0.00	0.00	0.00
8,900.0	90.00	179.83	7,421.0	-2,515.97	-1,138.6	781.3	1,245.8	0.00	0.00	0.00
9,000.0	90.00	179.83	7,421.0	-2,515.97	-1,238.6	781.6	1,344.7	0.00	0.00	0.00
9,100.0	90.00	179.83	7,421.0	-2,515.96	-1,338.6	781.9	1,443.5	0.00	0.00	0.00
9,200.0	90.00	179.83	7,421.0	-2,515.96	-1,438.6	782.2	1,542.4	0.00	0.00	0.00
9,300.0	90.00	179.83	7,421.0	-2,515.96	-1,538.6	782.5	1,641.2	0.00	0.00	0.00
9,400.0	90.00	179.83	7,421.0	-2,515.96	-1,638.6	782.8	1,740.0	0.00	0.00	0.00
9,500.0	90.00	179.83	7,421.0	-2,515.96	-1,738.6	783.1	1,838.9	0.00	0.00	0.00
9,600.0	90.00	179.83	7,421.0	-2,515.96	-1,838.6	783.4	1,937.7	0.00	0.00	0.00
9,700.0	90.00	179.83	7,421.0	-2,515.96	-1,938.6	783.7	2,036.6	0.00	0.00	0.00
9,800.0	90.00	179.83	7,421.0	-2,515.96	-2,038.6	784.0	2,135.4	0.00	0.00	0.00
9,900.0	90.00	179.83	7,421.0	-2,515.95	-2,138.6	784.3	2,234.2	0.00	0.00	0.00
10,000.0	90.00	179.83	7,421.0	-2,515.95	-2,238.6	784.6	2,333.1	0.00	0.00	0.00
10,100.0	90.00	179.83	7,421.0	-2,515.95	-2,338.6	784.9	2,431.9	0.00	0.00	0.00
10,200.0	90.00	179.83	7,421.0	-2,515.95	-2,438.6	785.2	2,530.8	0.00	0.00	0.00
10,300.0	90.00	179.83	7,421.0	-2,515.95	-2,538.6	785.5	2,629.6	0.00	0.00	0.00
10,400.0	90.00	179.83	7,421.0	-2,515.95	-2,638.6	785.8	2,728.4	0.00	0.00	0.00
10,500.0	90.00	179.83	7,421.0	-2,515.95	-2,738.6	786.1	2,827.3	0.00	0.00	0.00
10,600.0	90.00	179.83	7,421.0	-2,515.95	-2,838.6	786.3	2,926.1	0.00	0.00	0.00
10,700.0	90.00	179.83	7,421.0	-2,515.95	-2,938.6	786.6	3,025.0	0.00	0.00	0.00
10,800.0	90.00	179.83	7,421.0	-2,515.95	-3,038.6	786.9	3,123.8	0.00	0.00	0.00
10,900.0	90.00	179.83	7,421.0	-2,515.96	-3,138.6	787.2	3,222.6	0.00	0.00	0.00
11,000.0	90.00	179.83	7,421.0	-2,515.96	-3,238.6	787.5	3,321.5	0.00	0.00	0.00
11,100.0	90.00	179.83	7,421.0	-2,515.96	-3,338.6	787.8	3,420.3	0.00	0.00	0.00
11,200.0	90.00	179.83	7,421.0	-2,515.96	-3,438.6	788.1	3,519.2	0.00	0.00	0.00
11,300.0	90.00	179.83	7,421.0	-2,515.96	-3,538.6	788.4	3,618.0	0.00	0.00	0.00
11,400.0	90.00	179.83	7,421.0	-2,515.96	-3,638.6	788.7	3,716.8	0.00	0.00	0.00
11,500.0	90.00	179.83	7,421.0	-2,515.96	-3,738.6	789.0	3,815.7	0.00	0.00	0.00
11,600.0	90.00	179.83	7,421.0	-2,515.97	-3,838.6	789.3	3,914.5	0.00	0.00	0.00
11,700.0	90.00	179.83	7,421.0	-2,515.97	-3,938.6	789.6	4,013.4	0.00	0.00	0.00
11,800.0	90.00	179.83	7,421.0	-2,515.97	-4,038.6	789.9	4,112.2	0.00	0.00	0.00
11,900.0	90.00	179.83	7,421.0	-2,515.97	-4,138.6	790.2	4,211.0	0.00	0.00	0.00
12,000.0	90.00	179.83	7,421.0	-2,515.97	-4,238.6	790.4	4,309.9	0.00	0.00	0.00
12,100.0	90.00	179.83	7,421.0	-2,515.98	-4,338.6	790.7	4,408.7	0.00	0.00	0.00
12,200.0	90.00	179.83	7,421.0	-2,515.98	-4,438.6	791.0	4,507.6	0.00	0.00	0.00
12,300.0	90.00	179.83	7,421.0	-2,515.98	-4,538.6	791.3	4,606.4	0.00	0.00	0.00
12,400.0	90.00	179.83	7,421.0	-2,515.99	-4,638.6	791.6	4,705.2	0.00	0.00	0.00
12,500.0	90.00	179.83	7,421.0	-2,515.99	-4,738.6	791.9	4,804.1	0.00	0.00	0.00
12,600.0	90.00	179.83	7,421.0	-2,515.99	-4,838.6	792.2	4,902.9	0.00	0.00	0.00
12,700.0	90.00	179.83	7,421.0	-2,516.00	-4,938.6	792.5	5,001.8	0.00	0.00	0.00
12,800.0	90.00	179.83	7,421.0	-2,516.00	-5,038.6	792.8	5,100.6	0.00	0.00	0.00
BHL - BYBEE 2 (P4)										
12,823.2	90.00	179.83	7,421.0	-2,516.00	-5,061.8	792.8	5,123.5	0.00	0.00	0.00

Database:	EDM 5000.1 Single User Db	Local Co-ordinate Reference:	Well BYBEE 2
Company:	EXTRACTION OIL & GAS	TVD Reference:	KB-EST @ 4905.0usft
Project:	WELD COUNTY, COLORADO (NAD 83)	MD Reference:	KB-EST @ 4905.0usft
Site:	SEC. 14 T2N R68W 6th P.M.	North Reference:	True
Well:	BYBEE 2	Survey Calculation Method:	Minimum Curvature
Wellbore:	ORIGINAL WELLBORE		
Design:	PROPOSAL #4		

Formations					
MD (usft)	TVD (usft)	Name	Lithology	Dip (°)	Dip Direction (°)
3,591.6	3,559.0	PARKMAN		0.00	
4,427.8	4,377.0	SUSSEX		0.00	
4,996.3	4,933.0	SHANNON		0.00	
7,220.3	7,117.0	SHARON SPRINGS		0.00	
7,258.4	7,150.0	NIOBRARA		0.00	
7,647.9	7,389.0	FT HAYS		0.00	
7,733.1	7,411.0	CODELL		0.00	

Plan Annotations				
MD (usft)	TVD (usft)	Local Coordinates		Comment
		+N/-S (usft)	+E/-W (usft)	
1,500.0	1,500.0	0.0	0.0	9 5/8" SURFACE CASING
1,700.0	1,700.0	0.0	0.0	START NUDGE (2°/100ft BUR)
2,299.8	2,295.4	33.6	52.8	EOB TO 12° INC
6,125.5	6,037.6	460.4	723.6	END OF TANGENT
6,725.3	6,633.0	494.0	776.4	EOD TO VERTICAL
6,940.3	6,848.0	494.0	776.4	KOP (10°/100ft BUR)
7,840.4	7,421.0	-79.0	778.1	LANDING PNT - BYBEE 2 (P4)
12,823.2	7,421.0	-5,061.8	792.8	BHL - BYBEE 2 (P4)