

# **EXTRACTION OIL & GAS**

**WELD COUNTY, COLORADO (NAD 83)**

**SEC. 14 T2N R68W 6th P.M.**

**BYBEE 1**

**ORIGINAL WELLBORE**

**29 July, 2015**

**Plan: PROPOSAL #4**

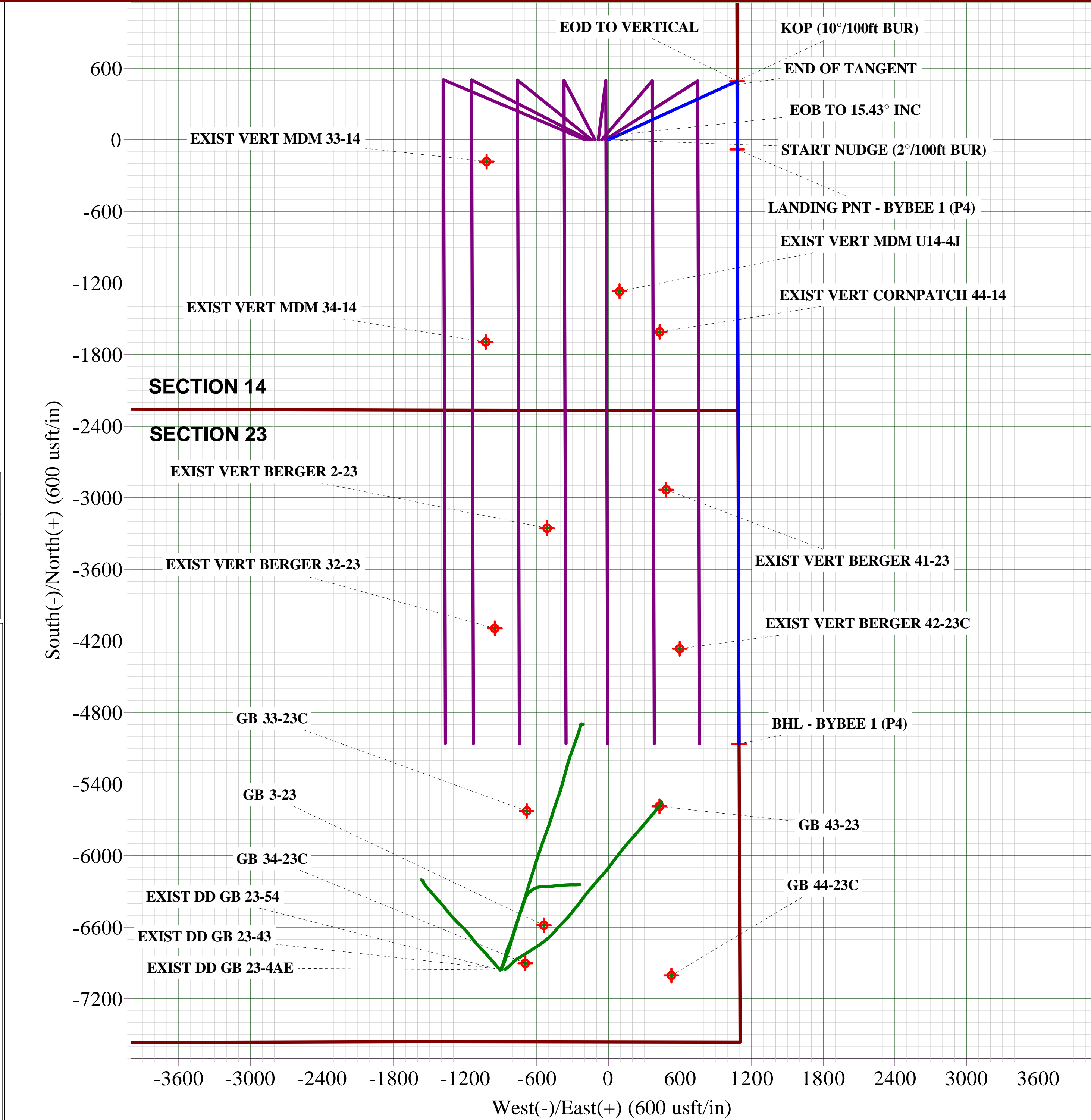
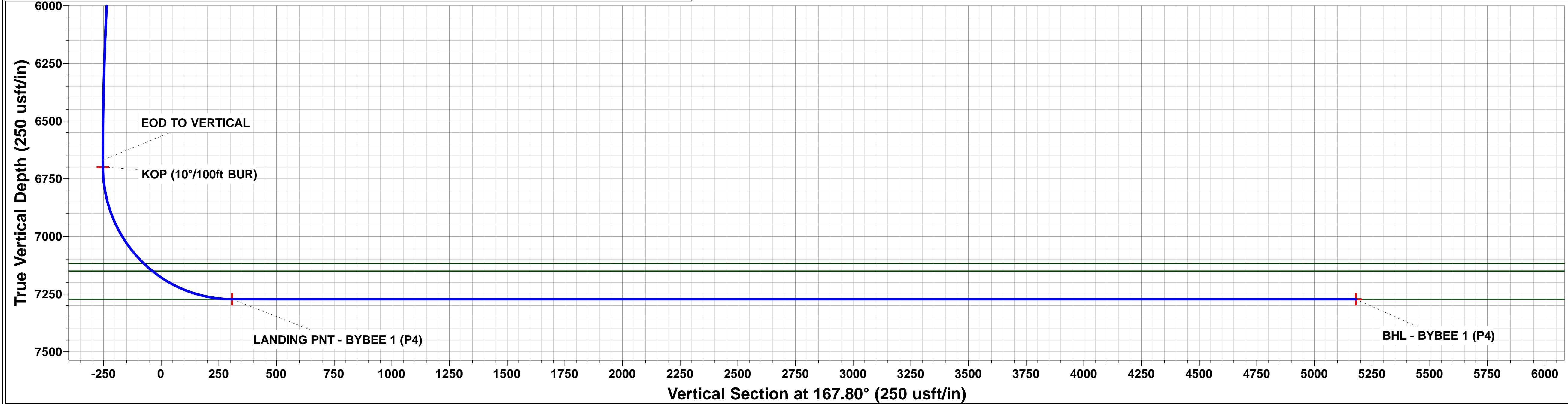
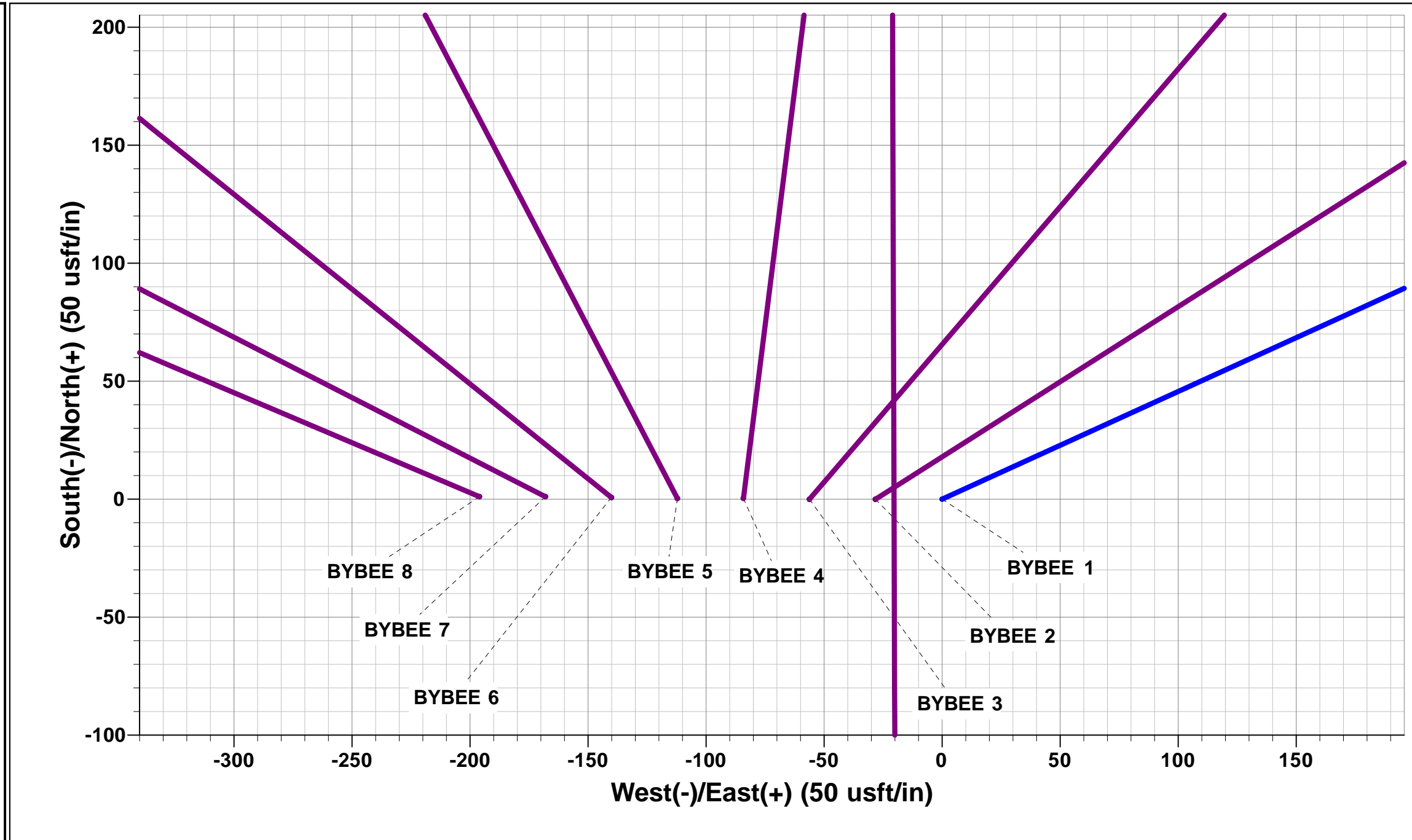
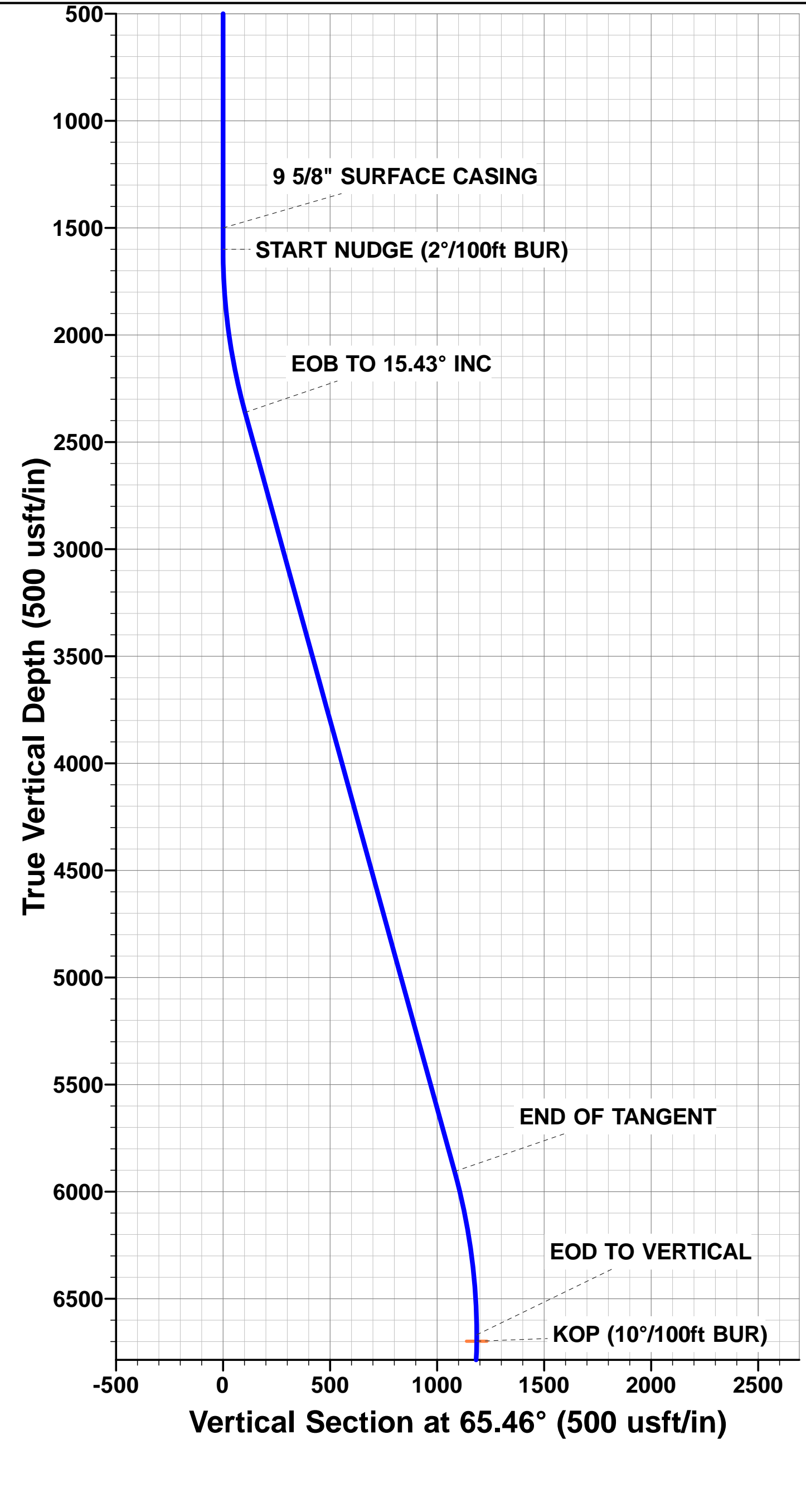




Project: WELD COUNTY, COLORADO (NAD 83)  
Site: SEC. 14 T2N R68W 6th P.M.  
Well: BYBEE 1  
Wellbore: ORIGINAL WELLBORE  
Design: PROPOSAL #4

ANNOTATIONS									FORMATION TOP DETAILS		
TVD	MD	Inc	Azi	+N/-S	+E/-W	VSect	Dep	Annotation	TVDPath	MDPath	Formation
1500.0	1500.0	0.00	0.00	0.0	0.0	0.0	0.0	9 5/8" SURFACE CASING	3559.0	3613.1	PARKMAN
1600.0	1600.0	0.00	0.00	0.0	0.0	0.0	0.0	START NUDGE (2°/100ft BUR)	4377.0	4461.7	SUSSEX
2362.4	2371.7	15.43	65.46	42.9	94.0	-22.1	103.3	EOB TO 15.43° INC	4933.0	5038.5	SHANNON
5906.5	6048.4	15.43	65.46	449.3	984.1	-231.2	1081.8	END OF TANGENT	7117.0	7318.7	SHARON SPRINGS
6668.9	6820.1	0.00	0.00	492.2	1078.1	-253.2	1185.1	EOD TO VERTICAL	7150.0	7369.4	NIOBRARA
6698.9	6850.1	0.00	0.00	492.2	1078.1	-253.2	1185.1	KOP (10°/100ft BUR)	7272.0	7750.3	NIO B TARGET
7272.0	7750.3	90.00	179.83	-80.9	1079.8	307.3	1758.2	LANDING PNT - BYBEE 1 (P4)			
7272.0	12731.7	90.00	179.83	-5062.2	1094.6	5179.2	6739.6	BHL - BYBEE 1 (P4)			

WELLBORE TARGET DETAILS (LAT/LONG)					
Name	TVD	+N/-S	+E/-W	Latitude	Longitude
KOP - BYBEE 1 (P4)	6698.9	492.2	1078.1	40.139012	-104.961016
BHL - BYBEE 1 (P4)	7272.0	-5062.2	1094.6	40.123765	-104.960958
LANDING PNT - BYBEE 1 (P4)	7272.0	-80.8	1079.8	40.137439	-104.961010



# Planning Report



<b>Database:</b>	EDM 5000.1 Single User Db	<b>Local Co-ordinate Reference:</b>	Well BYBEE 1
<b>Company:</b>	EXTRACTION OIL & GAS	<b>TVD Reference:</b>	KB-EST @ 4905.0usft
<b>Project:</b>	WELD COUNTY, COLORADO (NAD 83)	<b>MD Reference:</b>	KB-EST @ 4905.0usft
<b>Site:</b>	SEC. 14 T2N R68W 6th P.M.	<b>North Reference:</b>	True
<b>Well:</b>	BYBEE 1	<b>Survey Calculation Method:</b>	Minimum Curvature
<b>Wellbore:</b>	ORIGINAL WELLBORE		
<b>Design:</b>	PROPOSAL #4		

<b>Project</b>	WELD COUNTY, COLORADO (NAD 83)		
<b>Map System:</b>	US State Plane 1983	<b>System Datum:</b>	Mean Sea Level
<b>Geo Datum:</b>	North American Datum 1983		
<b>Map Zone:</b>	Colorado Northern Zone		Using geodetic scale factor

<b>Site</b>	SEC. 14 T2N R68W 6th P.M.		
<b>Site Position:</b>		<b>Northing:</b>	1,293,444.96 usft
<b>From:</b>	Lat/Long	<b>Easting:</b>	3,149,614.50 usft
<b>Position Uncertainty:</b>	0.0 usft	<b>Slot Radius:</b>	1.10000ft
		<b>Latitude:</b>	40.137661
		<b>Longitude:</b>	-104.964872
		<b>Grid Convergence:</b>	0.35 °

<b>Well</b>	BYBEE 1		
<b>Well Position</b>	<b>+N/-S</b>	0.0 usft	<b>Northing:</b> 1,293,444.96 usft
	<b>+E/-W</b>	0.0 usft	<b>Easting:</b> 3,149,614.50 usft
<b>Position Uncertainty</b>	0.0 usft	<b>Wellhead Elevation:</b>	usft
		<b>Latitude:</b>	40.137661
		<b>Longitude:</b>	-104.964872
		<b>Ground Level:</b>	4,889.0 usft

<b>Wellbore</b>	ORIGINAL WELLBORE				
<b>Magnetics</b>	<b>Model Name</b>	<b>Sample Date</b>	<b>Declination (°)</b>	<b>Dip Angle (°)</b>	<b>Field Strength (nT)</b>
	IGRF2015	29/07/2015	8.49	66.66	52,448

<b>Design</b>	PROPOSAL #4			
<b>Audit Notes:</b>				
<b>Version:</b>	<b>Phase:</b>	PROTOTYPE	<b>Tie On Depth:</b>	0.0
<b>Vertical Section:</b>	<b>Depth From (TVD) (usft)</b>	<b>+N/-S (usft)</b>	<b>+E/-W (usft)</b>	<b>Direction (°)</b>
	0.0	0.0	0.0	167.80

<b>Plan Sections</b>											
MD (usft)	Inc (°)	Azi (°)	Vertical Depth	SS (usft)	+N/-S (usft)	+E/-W (usft)	Dogleg Rate (°/100usf)	Build Rate (°/100usf)	Turn Rate (°/100usf)	TFO (°)	Target
0.0	0.00	0.00	0.0	-4,905.0	0.0	0.0	0.00	0.00	0.00	0.00	
1,600.0	0.00	0.00	1,600.0	-3,305.0	0.0	0.0	0.00	0.00	0.00	0.00	
2,371.7	15.43	65.46	2,362.4	-2,542.6	42.9	94.0	2.00	2.00	0.00	65.46	
6,048.4	15.43	65.46	5,906.5	1,001.5	449.3	984.1	0.00	0.00	0.00	0.00	
6,820.1	0.00	0.00	6,668.9	1,763.9	492.2	1,078.1	2.00	-2.00	0.00	180.00	
6,850.1	0.00	0.00	6,698.9	1,793.9	492.2	1,078.1	0.00	0.00	0.00	0.00	KOP - BYBEE 1 (P4)
7,750.3	90.00	179.83	7,272.0	2,367.0	-80.8	1,079.8	10.00	10.00	19.98	179.83	LANDING PNT - BYBEE 1 (P4)
12,731.7	90.00	179.83	7,272.0	2,367.0	-5,062.2	1,094.6	0.00	0.00	0.00	22.13	BHL - BYBEE 1 (P4)

## Planning Report



<b>Database:</b>	EDM 5000.1 Single User Db	<b>Local Co-ordinate Reference:</b>	Well BYBEE 1
<b>Company:</b>	EXTRACTION OIL & GAS	<b>TVD Reference:</b>	KB-EST @ 4905.0usft
<b>Project:</b>	WELD COUNTY, COLORADO (NAD 83)	<b>MD Reference:</b>	KB-EST @ 4905.0usft
<b>Site:</b>	SEC. 14 T2N R68W 6th P.M.	<b>North Reference:</b>	True
<b>Well:</b>	BYBEE 1	<b>Survey Calculation Method:</b>	Minimum Curvature
<b>Wellbore:</b>	ORIGINAL WELLBORE		
<b>Design:</b>	PROPOSAL #4		

## Planned Survey

MD (usft)	Inc (°)	Azi (°)	TVD (usft)	SS (usft)	+N/-S (usft)	+E/-W (usft)	Vertical Section (usft)	Dogleg Rate (°/100usft)	Build Rate (°/100usft)	Turn Rate (°/100usft)
0.0	0.00	0.00	0.0	4,905.00	0.0	0.0	0.0	0.00	0.00	0.00
100.0	0.00	0.00	100.0	4,805.00	0.0	0.0	0.0	0.00	0.00	0.00
200.0	0.00	0.00	200.0	4,705.00	0.0	0.0	0.0	0.00	0.00	0.00
300.0	0.00	0.00	300.0	4,605.00	0.0	0.0	0.0	0.00	0.00	0.00
400.0	0.00	0.00	400.0	4,505.00	0.0	0.0	0.0	0.00	0.00	0.00
500.0	0.00	0.00	500.0	4,405.00	0.0	0.0	0.0	0.00	0.00	0.00
600.0	0.00	0.00	600.0	4,305.00	0.0	0.0	0.0	0.00	0.00	0.00
700.0	0.00	0.00	700.0	4,205.00	0.0	0.0	0.0	0.00	0.00	0.00
800.0	0.00	0.00	800.0	4,105.00	0.0	0.0	0.0	0.00	0.00	0.00
900.0	0.00	0.00	900.0	4,005.00	0.0	0.0	0.0	0.00	0.00	0.00
1,000.0	0.00	0.00	1,000.0	3,905.00	0.0	0.0	0.0	0.00	0.00	0.00
1,100.0	0.00	0.00	1,100.0	3,805.00	0.0	0.0	0.0	0.00	0.00	0.00
1,200.0	0.00	0.00	1,200.0	3,705.00	0.0	0.0	0.0	0.00	0.00	0.00
1,300.0	0.00	0.00	1,300.0	3,605.00	0.0	0.0	0.0	0.00	0.00	0.00
1,400.0	0.00	0.00	1,400.0	3,505.00	0.0	0.0	0.0	0.00	0.00	0.00
<b>9 5/8" SURFACE CASING</b>										
1,500.0	0.00	0.00	1,500.0	3,405.00	0.0	0.0	0.0	0.00	0.00	0.00
<b>START NUDGE (2°/100ft BUR)</b>										
1,600.0	0.00	0.00	1,600.0	3,305.00	0.0	0.0	0.0	0.00	0.00	0.00
1,700.0	2.00	65.46	1,700.0	3,205.02	0.7	1.6	-0.4	2.00	2.00	0.00
1,800.0	4.00	65.46	1,799.8	3,105.16	2.9	6.3	-1.5	2.00	2.00	0.00
1,900.0	6.00	65.46	1,899.5	3,005.55	6.5	14.3	-3.4	2.00	2.00	0.00
2,000.0	8.00	65.46	1,998.7	2,906.30	11.6	25.4	-6.0	2.00	2.00	0.00
2,100.0	10.00	65.46	2,097.5	2,807.53	18.1	39.6	-9.3	2.00	2.00	0.00
2,200.0	12.00	65.46	2,195.6	2,709.38	26.0	56.9	-13.4	2.00	2.00	0.00
2,300.0	14.00	65.46	2,293.1	2,611.94	35.3	77.4	-18.2	2.00	2.00	0.00
<b>EOB TO 15.43° INC</b>										
2,371.7	15.43	65.46	2,362.4	2,542.60	42.9	94.0	-22.1	2.00	2.00	0.00
2,400.0	15.43	65.46	2,389.7	2,515.32	46.0	100.8	-23.7	0.00	0.00	0.00
2,500.0	15.43	65.46	2,486.1	2,418.93	57.1	125.0	-29.4	0.00	0.00	0.00
2,600.0	15.43	65.46	2,582.5	2,322.53	68.1	149.3	-35.1	0.00	0.00	0.00
2,700.0	15.43	65.46	2,678.9	2,226.14	79.2	173.5	-40.7	0.00	0.00	0.00
2,800.0	15.43	65.46	2,775.3	2,129.75	90.2	197.7	-46.4	0.00	0.00	0.00
2,900.0	15.43	65.46	2,871.6	2,033.35	101.3	221.9	-52.1	0.00	0.00	0.00
3,000.0	15.43	65.46	2,968.0	1,936.96	112.4	246.1	-57.8	0.00	0.00	0.00
3,100.0	15.43	65.46	3,064.4	1,840.57	123.4	270.3	-63.5	0.00	0.00	0.00
3,200.0	15.43	65.46	3,160.8	1,744.17	134.5	294.5	-69.2	0.00	0.00	0.00
3,300.0	15.43	65.46	3,257.2	1,647.78	145.5	318.7	-74.9	0.00	0.00	0.00
3,400.0	15.43	65.46	3,353.6	1,551.39	156.6	342.9	-80.6	0.00	0.00	0.00
3,500.0	15.43	65.46	3,450.0	1,454.99	167.6	367.1	-86.2	0.00	0.00	0.00
3,600.0	15.43	65.46	3,546.4	1,358.60	178.7	391.4	-91.9	0.00	0.00	0.00
<b>PARKMAN</b>										
3,613.1	15.43	65.46	3,559.0	1,346.00	180.1	394.5	-92.7	0.00	0.00	0.00
3,700.0	15.43	65.46	3,642.8	1,262.21	189.7	415.6	-97.6	0.00	0.00	0.00
3,800.0	15.43	65.46	3,739.2	1,165.81	200.8	439.8	-103.3	0.00	0.00	0.00
3,900.0	15.43	65.46	3,835.6	1,069.42	211.8	464.0	-109.0	0.00	0.00	0.00
4,000.0	15.43	65.46	3,932.0	973.02	222.9	488.2	-114.7	0.00	0.00	0.00
4,100.0	15.43	65.46	4,028.4	876.63	233.9	512.4	-120.4	0.00	0.00	0.00
4,200.0	15.43	65.46	4,124.8	780.24	245.0	536.6	-126.0	0.00	0.00	0.00
4,300.0	15.43	65.46	4,221.2	683.84	256.0	560.8	-131.7	0.00	0.00	0.00
4,400.0	15.43	65.46	4,317.5	587.45	267.1	585.0	-137.4	0.00	0.00	0.00
<b>SUSSEX</b>										
4,461.7	15.43	65.46	4,377.0	528.00	273.9	600.0	-140.9	0.00	0.00	0.00
4,500.0	15.43	65.46	4,413.9	491.06	278.1	609.2	-143.1	0.00	0.00	0.00

# Planning Report



<b>Database:</b>	EDM 5000.1 Single User Db	<b>Local Co-ordinate Reference:</b>	Well BYBEE 1
<b>Company:</b>	EXTRACTION OIL & GAS	<b>TVD Reference:</b>	KB-EST @ 4905.0usft
<b>Project:</b>	WELD COUNTY, COLORADO (NAD 83)	<b>MD Reference:</b>	KB-EST @ 4905.0usft
<b>Site:</b>	SEC. 14 T2N R68W 6th P.M.	<b>North Reference:</b>	True
<b>Well:</b>	BYBEE 1	<b>Survey Calculation Method:</b>	Minimum Curvature
<b>Wellbore:</b>	ORIGINAL WELLBORE		
<b>Design:</b>	PROPOSAL #4		

## Planned Survey

MD (usft)	Inc (°)	Azi (°)	TVD (usft)	SS (usft)	+N/-S (usft)	+E/-W (usft)	Vertical Section (usft)	Dogleg Rate (°/100usft)	Build Rate (°/100usft)	Turn Rate (°/100usft)
4,600.0	15.43	65.46	4,510.3	394.66	289.2	633.5	-148.8	0.00	0.00	0.00
4,700.0	15.43	65.46	4,606.7	298.27	300.3	657.7	-154.5	0.00	0.00	0.00
4,800.0	15.43	65.46	4,703.1	201.88	311.3	681.9	-160.2	0.00	0.00	0.00
4,900.0	15.43	65.46	4,799.5	105.48	322.4	706.1	-165.9	0.00	0.00	0.00
5,000.0	15.43	65.46	4,895.9	9.09	333.4	730.3	-171.5	0.00	0.00	0.00
<b>SHANNON</b>										
<b>5,038.5</b>	<b>15.43</b>	<b>65.46</b>	<b>4,933.0</b>	<b>-28.00</b>	<b>337.7</b>	<b>739.6</b>	<b>-173.7</b>	<b>0.00</b>	<b>0.00</b>	<b>0.00</b>
5,100.0	15.43	65.46	4,992.3	-87.30	344.5	754.5	-177.2	0.00	0.00	0.00
5,200.0	15.43	65.46	5,088.7	-183.70	355.5	778.7	-182.9	0.00	0.00	0.00
5,300.0	15.43	65.46	5,185.1	-280.09	366.6	802.9	-188.6	0.00	0.00	0.00
5,400.0	15.43	65.46	5,281.5	-376.48	377.6	827.1	-194.3	0.00	0.00	0.00
5,500.0	15.43	65.46	5,377.9	-472.88	388.7	851.4	-200.0	0.00	0.00	0.00
5,600.0	15.43	65.46	5,474.3	-569.27	399.7	875.6	-205.7	0.00	0.00	0.00
5,700.0	15.43	65.46	5,570.7	-665.66	410.8	899.8	-211.3	0.00	0.00	0.00
5,800.0	15.43	65.46	5,667.1	-762.06	421.8	924.0	-217.0	0.00	0.00	0.00
5,900.0	15.43	65.46	5,763.5	-858.45	432.9	948.2	-222.7	0.00	0.00	0.00
6,000.0	15.43	65.46	5,859.8	-954.84	443.9	972.4	-228.4	0.00	0.00	0.00
<b>END OF TANGENT</b>										
<b>6,048.4</b>	<b>15.43</b>	<b>65.46</b>	<b>5,906.5</b>	<b>-1,001.50</b>	<b>449.3</b>	<b>984.1</b>	<b>-231.2</b>	<b>0.00</b>	<b>0.00</b>	<b>0.00</b>
6,100.0	14.40	65.46	5,956.4	-1,051.36	454.8	996.2	-234.0	2.00	-2.00	0.00
6,200.0	12.40	65.46	6,053.6	-1,148.63	464.4	1,017.3	-239.0	2.00	-2.00	0.00
6,300.0	10.40	65.46	6,151.7	-1,246.65	472.6	1,035.3	-243.2	2.00	-2.00	0.00
6,400.0	8.40	65.46	6,250.3	-1,345.30	479.4	1,050.1	-246.7	2.00	-2.00	0.00
6,500.0	6.40	65.46	6,349.5	-1,444.46	484.8	1,061.8	-249.4	2.00	-2.00	0.00
6,600.0	4.40	65.46	6,449.0	-1,544.02	488.7	1,070.4	-251.4	2.00	-2.00	0.00
6,700.0	2.40	65.46	6,548.8	-1,643.83	491.2	1,075.8	-252.7	2.00	-2.00	0.00
6,800.0	0.40	65.46	6,648.8	-1,743.80	492.2	1,078.0	-253.2	2.00	-2.00	0.00
<b>EOD TO VERTICAL</b>										
<b>6,820.1</b>	<b>0.00</b>	<b>0.00</b>	<b>6,668.9</b>	<b>-1,763.90</b>	<b>492.2</b>	<b>1,078.1</b>	<b>-253.2</b>	<b>2.00</b>	<b>-2.00</b>	<b>-325.68</b>
<b>KOP (10°/100ft BUR)</b>										
<b>6,850.1</b>	<b>0.00</b>	<b>0.00</b>	<b>6,698.9</b>	<b>-1,793.90</b>	<b>492.2</b>	<b>1,078.1</b>	<b>-253.2</b>	<b>0.00</b>	<b>0.00</b>	<b>0.00</b>
6,900.0	4.99	179.83	6,748.7	-1,843.74	490.0	1,078.1	-251.1	10.00	10.00	0.00
7,000.0	14.99	179.83	6,847.1	-1,942.10	472.7	1,078.2	-234.2	10.00	10.00	0.00
7,100.0	24.98	179.83	6,941.0	-2,035.95	438.6	1,078.3	-200.8	10.00	10.00	0.00
7,200.0	34.98	179.83	7,027.5	-2,122.46	388.7	1,078.4	-152.0	10.00	10.00	0.00
7,300.0	44.98	179.83	7,104.0	-2,198.99	324.5	1,078.6	-89.2	10.00	10.00	0.00
<b>SHARON SPRINGS</b>										
<b>7,318.7</b>	<b>46.85</b>	<b>179.83</b>	<b>7,117.0</b>	<b>-2,212.00</b>	<b>311.1</b>	<b>1,078.6</b>	<b>-76.1</b>	<b>10.00</b>	<b>10.00</b>	<b>0.00</b>
<b>NIOBRARA</b>										
<b>7,369.4</b>	<b>51.92</b>	<b>179.83</b>	<b>7,150.0</b>	<b>-2,245.00</b>	<b>272.6</b>	<b>1,078.8</b>	<b>-38.4</b>	<b>10.00</b>	<b>10.00</b>	<b>0.00</b>
7,400.0	54.98	179.83	7,168.2	-2,263.22	248.0	1,078.8	-14.4	10.00	10.00	0.00
7,500.0	64.97	179.83	7,218.2	-2,313.19	161.5	1,079.1	70.2	10.00	10.00	0.00
7,600.0	74.97	179.83	7,252.4	-2,347.40	67.7	1,079.4	161.9	10.00	10.00	0.00
7,700.0	84.97	179.83	7,269.8	-2,364.79	-30.6	1,079.7	258.1	10.00	10.00	0.00
<b>LANDING PNT - BYBEE 1 (P4) - NIO B TARGET</b>										
<b>7,750.3</b>	<b>90.00</b>	<b>179.83</b>	<b>7,272.0</b>	<b>-2,367.00</b>	<b>-80.8</b>	<b>1,079.8</b>	<b>307.2</b>	<b>10.00</b>	<b>10.00</b>	<b>0.00</b>
7,800.0	90.00	179.83	7,272.0	-2,367.00	-130.6	1,080.0	355.9	0.00	0.00	0.00
7,900.0	90.00	179.83	7,272.0	-2,367.01	-230.6	1,080.3	453.7	0.00	0.00	0.00
8,000.0	90.00	179.83	7,272.0	-2,367.02	-330.6	1,080.6	551.5	0.00	0.00	0.00
8,100.0	90.00	179.83	7,272.0	-2,367.03	-430.6	1,080.9	649.3	0.00	0.00	0.00
8,200.0	90.00	179.83	7,272.0	-2,367.03	-530.6	1,081.2	747.1	0.00	0.00	0.00
8,300.0	90.00	179.83	7,272.0	-2,367.04	-630.6	1,081.5	844.9	0.00	0.00	0.00
8,400.0	90.00	179.83	7,272.0	-2,367.05	-730.6	1,081.8	942.7	0.00	0.00	0.00



## Planning Report



<b>Database:</b>	EDM 5000.1 Single User Db	<b>Local Co-ordinate Reference:</b>	Well BYBEE 1
<b>Company:</b>	EXTRACTION OIL & GAS	<b>TVD Reference:</b>	KB-EST @ 4905.0usft
<b>Project:</b>	WELD COUNTY, COLORADO (NAD 83)	<b>MD Reference:</b>	KB-EST @ 4905.0usft
<b>Site:</b>	SEC. 14 T2N R68W 6th P.M.	<b>North Reference:</b>	True
<b>Well:</b>	BYBEE 1	<b>Survey Calculation Method:</b>	Minimum Curvature
<b>Wellbore:</b>	ORIGINAL WELLBORE		
<b>Design:</b>	PROPOSAL #4		

Planned Survey										
MD (usft)	Inc (°)	Azi (°)	TVD (usft)	SS (usft)	+N/-S (usft)	+E/-W (usft)	Vertical Section (usft)	Dogleg Rate (°/100usft)	Build Rate (°/100usft)	Turn Rate (°/100usft)
8,500.0	90.00	179.83	7,272.1	-2,367.05	-830.6	1,082.1	1,040.5	0.00	0.00	0.00
8,600.0	90.00	179.83	7,272.1	-2,367.06	-930.6	1,082.4	1,138.3	0.00	0.00	0.00
8,700.0	90.00	179.83	7,272.1	-2,367.06	-1,030.6	1,082.7	1,236.1	0.00	0.00	0.00
8,800.0	90.00	179.83	7,272.1	-2,367.07	-1,130.6	1,083.0	1,333.9	0.00	0.00	0.00
8,900.0	90.00	179.83	7,272.1	-2,367.07	-1,230.6	1,083.3	1,431.7	0.00	0.00	0.00
9,000.0	90.00	179.83	7,272.1	-2,367.08	-1,330.6	1,083.6	1,529.5	0.00	0.00	0.00
9,100.0	90.00	179.83	7,272.1	-2,367.08	-1,430.6	1,083.8	1,627.3	0.00	0.00	0.00
9,200.0	90.00	179.83	7,272.1	-2,367.09	-1,530.6	1,084.1	1,725.1	0.00	0.00	0.00
9,300.0	90.00	179.83	7,272.1	-2,367.09	-1,630.6	1,084.4	1,822.9	0.00	0.00	0.00
9,400.0	90.00	179.83	7,272.1	-2,367.09	-1,730.6	1,084.7	1,920.7	0.00	0.00	0.00
9,500.0	90.00	179.83	7,272.1	-2,367.09	-1,830.6	1,085.0	2,018.5	0.00	0.00	0.00
9,600.0	90.00	179.83	7,272.1	-2,367.10	-1,930.6	1,085.3	2,116.3	0.00	0.00	0.00
9,700.0	90.00	179.83	7,272.1	-2,367.10	-2,030.6	1,085.6	2,214.1	0.00	0.00	0.00
9,800.0	90.00	179.83	7,272.1	-2,367.10	-2,130.6	1,085.9	2,311.9	0.00	0.00	0.00
9,900.0	90.00	179.83	7,272.1	-2,367.10	-2,230.6	1,086.2	2,409.7	0.00	0.00	0.00
10,000.0	90.00	179.83	7,272.1	-2,367.10	-2,330.6	1,086.5	2,507.5	0.00	0.00	0.00
10,100.0	90.00	179.83	7,272.1	-2,367.10	-2,430.6	1,086.8	2,605.4	0.00	0.00	0.00
10,200.0	90.00	179.83	7,272.1	-2,367.10	-2,530.6	1,087.1	2,703.2	0.00	0.00	0.00
10,300.0	90.00	179.83	7,272.1	-2,367.10	-2,630.6	1,087.4	2,801.0	0.00	0.00	0.00
10,400.0	90.00	179.83	7,272.1	-2,367.10	-2,730.6	1,087.7	2,898.8	0.00	0.00	0.00
10,500.0	90.00	179.83	7,272.1	-2,367.10	-2,830.6	1,088.0	2,996.6	0.00	0.00	0.00
10,600.0	90.00	179.83	7,272.1	-2,367.10	-2,930.6	1,088.3	3,094.4	0.00	0.00	0.00
10,700.0	90.00	179.83	7,272.1	-2,367.10	-3,030.6	1,088.6	3,192.2	0.00	0.00	0.00
10,800.0	90.00	179.83	7,272.1	-2,367.10	-3,130.6	1,088.9	3,290.0	0.00	0.00	0.00
10,900.0	90.00	179.83	7,272.1	-2,367.10	-3,230.6	1,089.2	3,387.8	0.00	0.00	0.00
11,000.0	90.00	179.83	7,272.1	-2,367.09	-3,330.6	1,089.5	3,485.6	0.00	0.00	0.00
11,100.0	90.00	179.83	7,272.1	-2,367.09	-3,430.6	1,089.8	3,583.4	0.00	0.00	0.00
11,200.0	90.00	179.83	7,272.1	-2,367.09	-3,530.6	1,090.1	3,681.2	0.00	0.00	0.00
11,300.0	90.00	179.83	7,272.1	-2,367.08	-3,630.6	1,090.4	3,779.0	0.00	0.00	0.00
11,400.0	90.00	179.83	7,272.1	-2,367.08	-3,730.6	1,090.7	3,876.8	0.00	0.00	0.00
11,500.0	90.00	179.83	7,272.1	-2,367.08	-3,830.6	1,091.0	3,974.6	0.00	0.00	0.00
11,600.0	90.00	179.83	7,272.1	-2,367.07	-3,930.6	1,091.3	4,072.4	0.00	0.00	0.00
11,700.0	90.00	179.83	7,272.1	-2,367.07	-4,030.6	1,091.5	4,170.2	0.00	0.00	0.00
11,800.0	90.00	179.83	7,272.1	-2,367.06	-4,130.6	1,091.8	4,268.0	0.00	0.00	0.00
11,900.0	90.00	179.83	7,272.1	-2,367.06	-4,230.6	1,092.1	4,365.8	0.00	0.00	0.00
12,000.0	90.00	179.83	7,272.1	-2,367.05	-4,330.6	1,092.4	4,463.6	0.00	0.00	0.00
12,100.0	90.00	179.83	7,272.0	-2,367.05	-4,430.6	1,092.7	4,561.4	0.00	0.00	0.00
12,200.0	90.00	179.83	7,272.0	-2,367.04	-4,530.6	1,093.0	4,659.2	0.00	0.00	0.00
12,300.0	90.00	179.83	7,272.0	-2,367.03	-4,630.6	1,093.3	4,757.0	0.00	0.00	0.00
12,400.0	90.00	179.83	7,272.0	-2,367.03	-4,730.6	1,093.6	4,854.8	0.00	0.00	0.00
12,500.0	90.00	179.83	7,272.0	-2,367.02	-4,830.6	1,093.9	4,952.6	0.00	0.00	0.00
12,600.0	90.00	179.83	7,272.0	-2,367.01	-4,930.6	1,094.2	5,050.4	0.00	0.00	0.00
12,700.0	90.00	179.83	7,272.0	-2,367.00	-5,030.6	1,094.5	5,148.2	0.00	0.00	0.00
<b>BHL - BYBEE 1 (P4)</b>										
<b>12,731.7</b>	<b>90.00</b>	<b>179.83</b>	<b>7,272.0</b>	<b>-2,367.00</b>	<b>-5,062.2</b>	<b>1,094.6</b>	<b>5,179.2</b>	<b>0.00</b>	<b>0.00</b>	<b>0.00</b>

<b>Database:</b>	EDM 5000.1 Single User Db	<b>Local Co-ordinate Reference:</b>	Well BYBEE 1
<b>Company:</b>	EXTRACTION OIL & GAS	<b>TVD Reference:</b>	KB-EST @ 4905.0usft
<b>Project:</b>	WELD COUNTY, COLORADO (NAD 83)	<b>MD Reference:</b>	KB-EST @ 4905.0usft
<b>Site:</b>	SEC. 14 T2N R68W 6th P.M.	<b>North Reference:</b>	True
<b>Well:</b>	BYBEE 1	<b>Survey Calculation Method:</b>	Minimum Curvature
<b>Wellbore:</b>	ORIGINAL WELLBORE		
<b>Design:</b>	PROPOSAL #4		

Formations					
MD (usft)	TVD (usft)	Name	Lithology	Dip (°)	Dip Direction (°)
3,613.1	3,559.0	PARKMAN		0.00	
4,461.7	4,377.0	SUSSEX		0.00	
5,038.5	4,933.0	SHANNON		0.00	
7,318.7	7,117.0	SHARON SPRINGS		0.00	
7,369.4	7,150.0	NIOBRARA		0.00	
7,750.3	7,272.0	NIO B TARGET		0.00	

Plan Annotations				
MD (usft)	TVD (usft)	Local Coordinates		Comment
		+N/-S (usft)	+E/-W (usft)	
1,500.0	1,500.0	0.0	0.0	9 5/8" SURFACE CASING
1,600.0	1,600.0	0.0	0.0	START NUDGE (2°/100ft BUR)
2,371.7	2,362.4	42.9	94.0	EOB TO 15.43° INC
6,048.4	5,906.5	449.3	984.1	END OF TANGENT
6,820.1	6,668.9	492.2	1,078.1	EOD TO VERTICAL
6,850.1	6,698.9	492.2	1,078.1	KOP (10°/100ft BUR)
7,750.3	7,272.0	-80.9	1,079.8	LANDING PNT - BYBEE 1 (P4)
12,731.7	7,272.0	-5,062.2	1,094.6	BHL - BYBEE 1 (P4)