



Kerr-McGee Oil & Gas Onshore LP

A subsidiary of Anadarko Petroleum Corporation

1099 18th Street
Denver, CO 80202
720-929-6000

June 29, 2015

Matt Lepore
Director, Colorado Oil and Gas Conservation Commission
Department of Natural Resources
The Chancery Building
1120 Lincoln Street, Suite 801
Denver, CO 80203

Re: **30 Day Certification Letter - 318A.e**
COOK 38N-28HZ (Doc No. 400849762)
Township 2 North, Range 65 West
Section 16: SESE
Unit Acreage: 800 acres
Unit Spacing: 02N-65W-Sec 15 SWSW
02N-65W-Sec 16 SESE
02N-65W-Sec 21 E2E2
02N-65W-Sec 22 W2W2
02N-65W-Sec 28 E2E2
02N-65W-Sec 27 W2W2
02N-65W-Sec 33 NENE
02N-65W-Sec 34 NWNW

Weld County, Colorado

Dear Director Lepore:

Kerr McGee Oil and Gas Onshore LP ("KMG") hereby certifies that KMG owns one hundred percent (100%) of the leasehold interest in the mineral rights in the proposed spacing unit. KMG hereby respectfully requests approval of this boundary well.

If you have any questions or issues regarding this permit, please contact our office.

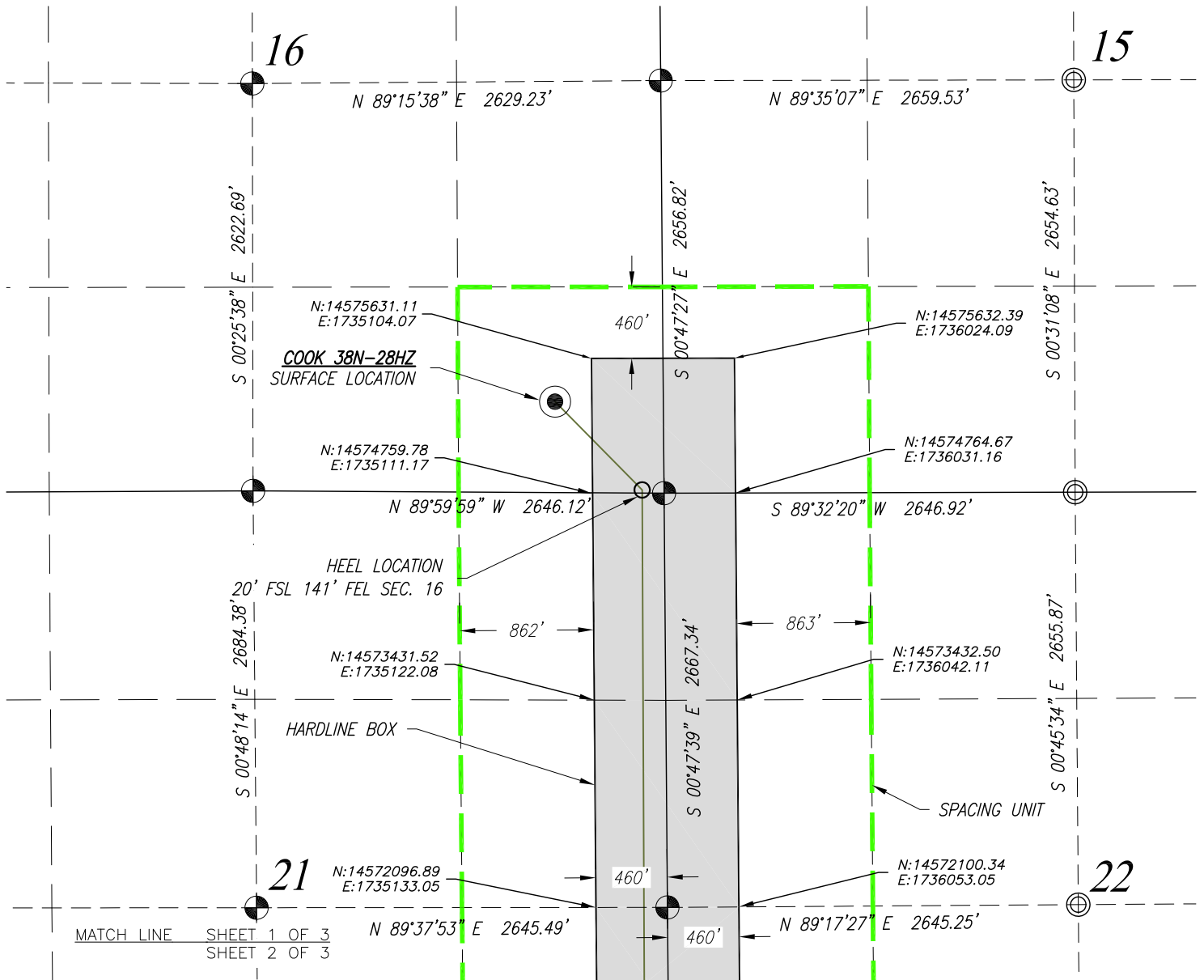
Sincerely,

Kerr-McGee Oil and Gas Onshore LP

A handwritten signature in blue ink that reads 'RPowers'.

Ronett Powers
Regulatory Analyst II

TOWNSHIP 2 NORTH, RANGE 65 WEST, 6TH P.M.



HEEL LOCATION

N: 14,574,784.36'
E: 1,735,430.03'

LATITUDE= 40.131457"
LONGITUDE= -104.660076"

LATITUDE= 40°07'53.244"
LONGITUDE= -104°39'36.273"

BOTTOM HOLE LOCATION

N: 14,564,223.10'
E: 1,735,475.13'

LATITUDE= 40.102454"
LONGITUDE= -104.660059"

LATITUDE= 40°06'08.834"
LONGITUDE= -104°39'36.212"

NOTES:

1. Found Section Corner
2. Calculated Section Corner
3. Basis of Bearings: Colorado coordinate system 1983 north zone ("GRID")
4. Basis of Distances: GRID; Combined Factor=0.999728637
5. Basis of coordinates: UTM ZONE 13 NAD 83

PREPARED FOR:

**Kerr-McGee Oil &
Gas Onshore L.P.**
1099 18th Street
Denver, Colorado 80202

Acklam, Inc.

DATE SURVEYED: 12/15/2014

DATE DRAFTED: 04/14/2015

DRAFTED BY: FWM CHK BY: MAH

JOB No. 14506

REVISED: 4/24/2015

SPACING UNIT EXHIBIT

COOK 38N-28HZ

SURFACE 585' FSL 697' FEL SEC. 16
GROUND ELEVATION=4878.3'

HEEL 20' FSL 141' FEL SEC. 16
BOTTOM 47' FSL 225' FEL SEC. 28

SE1/4 SE1/4
SECTION 16, T2N, R65W, 6TH PM
WELD COUNTY, COLORADO

0' 1000'

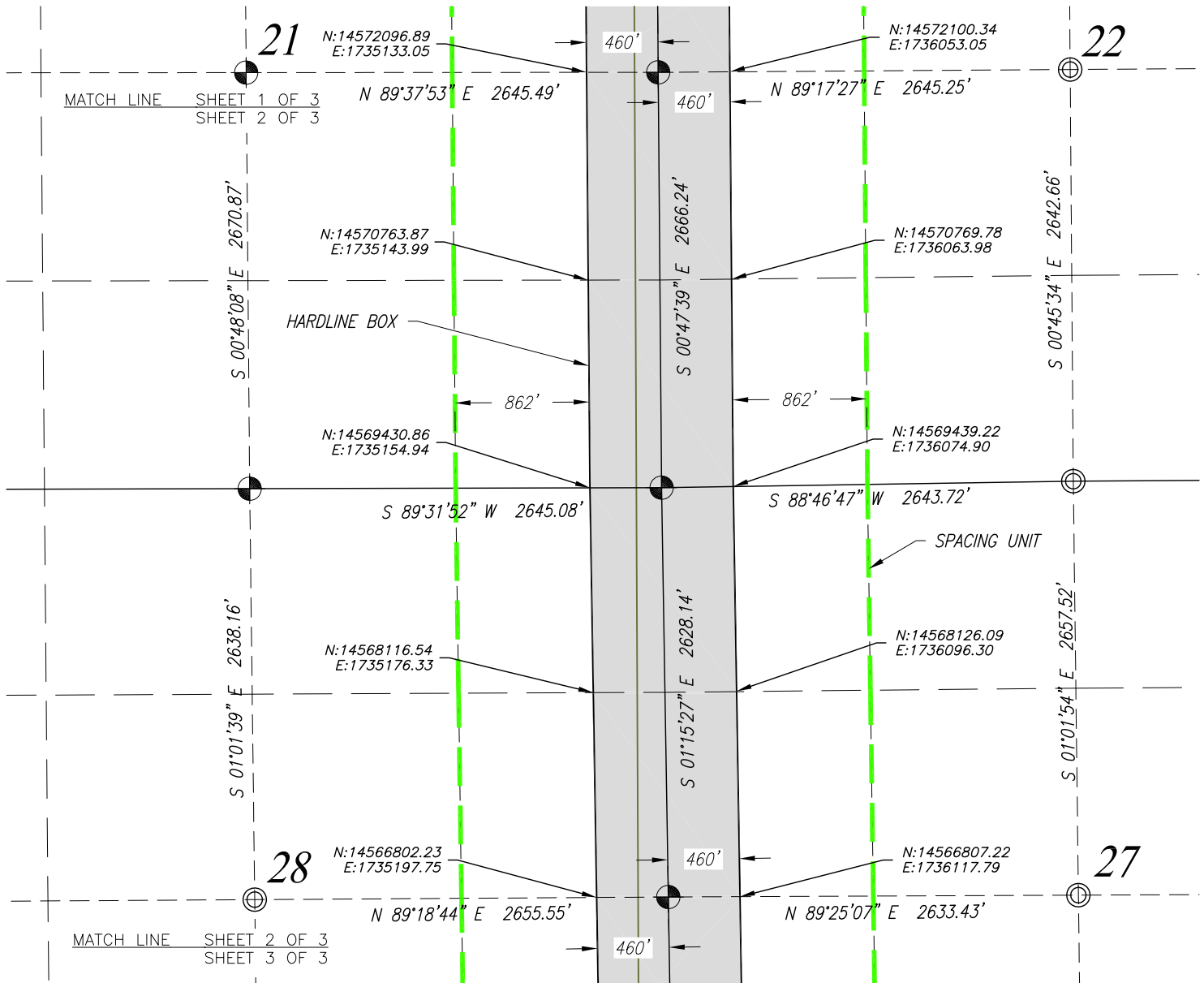
SCALE: 1"=1000'



NOTICE: According to Colorado law you must commence any legal action based upon any defect in this survey within three years after you first discover such defect. In no event may any action based upon any defect in this survey be commenced more than ten years from the date of the certification shown hereon.

SHEET 1 OF 3

TOWNSHIP 2 NORTH, RANGE 65 WEST, 6TH P.M.



HEEL LOCATION

N: 14,574,784.36'
E: 1,735,430.03'

LATITUDE= 40.131457"
LONGITUDE= -104.660076"

LATITUDE= 40°07'53.244"
LONGITUDE= -104°39'36.273"

BOTTOM HOLE LOCATION

N: 14,564,223.10'
E: 1,735,475.13'

LATITUDE= 40.102454"
LONGITUDE= -104.660059"

LATITUDE= 40°06'08.834"
LONGITUDE= -104°39'36.212"

NOTES:

1. Found Section Corner
2. Calculated Section Corner
3. Basis of Bearings: Colorado coordinate system 1983 north zone ('GRID')
4. Basis of Distances: GRID; Combined Factor=0.999728637
5. Basis of coordinates: UTM ZONE 13 NAD 83

PREPARED FOR:

Kerr-McGee Oil & Gas Onshore L.P.
1099 18th Street
Denver, Colorado 80202

Acklam, Inc.

DATE SURVEYED: 12/15/2014

DATE DRAFTED: 04/14/2015

DRAFTED BY: FWM CHK BY: MAH

JOB No. 14506

REVISED: 4/24/2015

SPACING UNIT EXHIBIT

COOK 38N-28HZ

SURFACE 585' FSL 697' FEL SEC. 16
GROUND ELEVATION=4878.3'

HEEL 20' FSL 141' FEL SEC. 16
BOTTOM 47' FSL 225' FEL SEC. 28

SE1/4 SE1/4
SECTION 16, T2N, R65W, 6TH PM
WELD COUNTY, COLORADO

0' 1000'

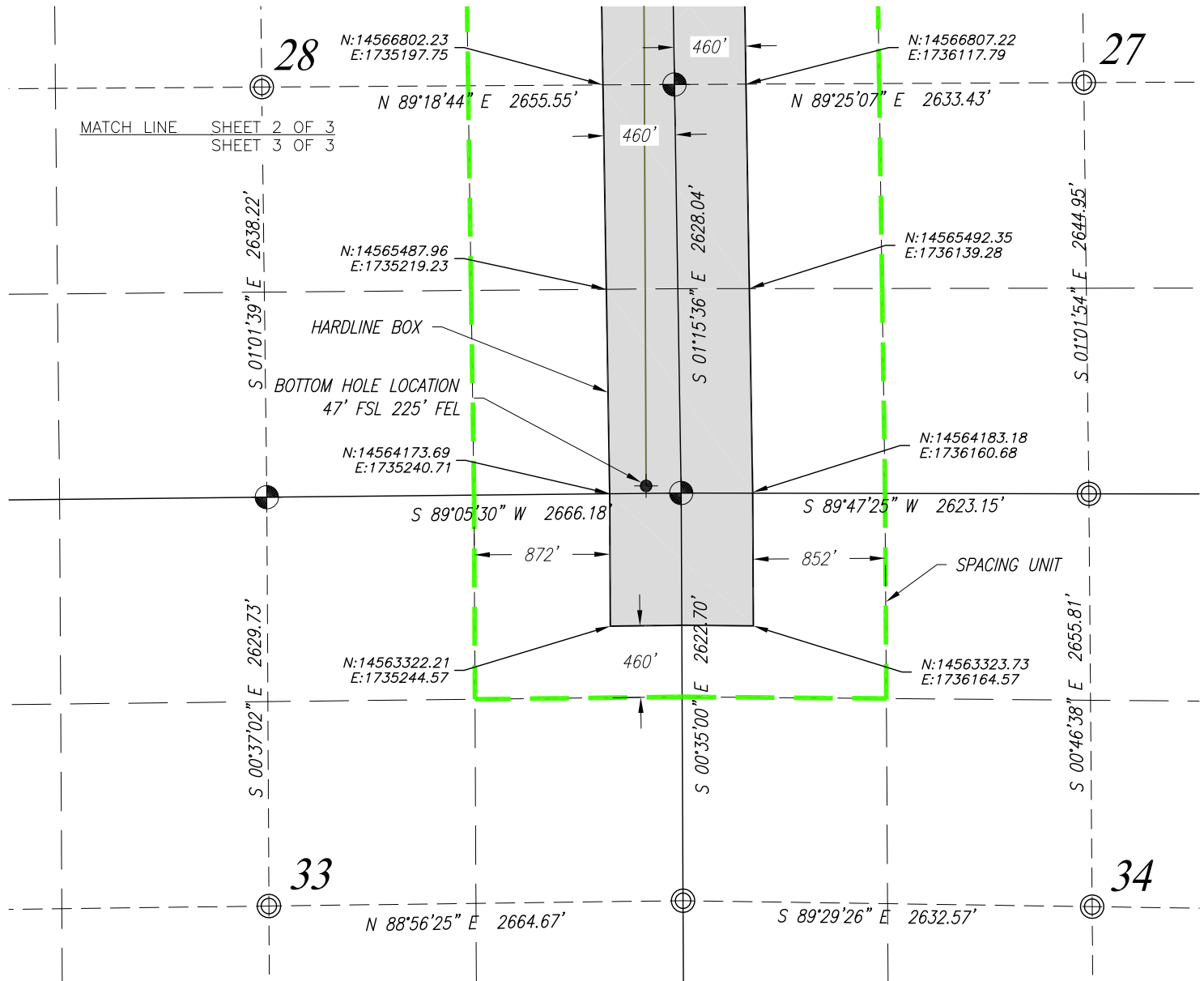
SCALE: 1"=1000'



NOTICE: According to Colorado law you must commence any legal action based upon any defect in this survey within three years after you first discover such defect. In no event may any action based upon any defect in this survey be commenced more than ten years from the date of the certification shown hereon.

SHEET 2 OF 3

TOWNSHIP 2 NORTH, RANGE 65 WEST, 6TH P.M.



HEEL LOCATION

N: 14,574,784.36'
E: 1,735,430.03'

LATITUDE= 40.131457"
LONGITUDE= -104.660076"

LATITUDE= 40°07'53.244"
LONGITUDE= -104°39'36.273"

BOTTOM HOLE LOCATION

N: 14,564,223.10'
E: 1,735,475.13'

LATITUDE= 40.102454"
LONGITUDE= -104.660059"

LATITUDE= 40°06'08.834"
LONGITUDE= -104°39'36.212"

NOTES:

1. Found Section Corner
2. Calculated Section Corner
3. Basis of Bearings: Colorado coordinate system 1983 north zone ('GRID')
4. Basis of Distances: GRID; Combined Factor=0.999728637
5. Basis of coordinates: UTM ZONE 13 NAD 83

PREPARED FOR:

KerrMcGee
Kerr-McGee Oil & Gas Onshore L.P.
1099 18th Street
Denver, Colorado 80202

Acklam, Inc.

DATE SURVEYED: 12/15/2014

DATE DRAFTED: 04/14/2015

DRAFTED BY: FWM CHK BY: MAH

JOB No. 14506

REVISED: 4/24/2015

SPACING UNIT EXHIBIT

COOK 38N-28HZ

SURFACE 585' FSL 697' FEL SEC. 16
GROUND ELEVATION=4878.3'

HEEL 20' FSL 141' FEL SEC. 16
BOTTOM 47' FSL 225' FEL SEC. 28

SE1/4 SE1/4
SECTION 16, T2N, R65W, 6TH PM
WELD COUNTY, COLORADO

0' 1000'
SCALE: 1"=1000'



NOTICE: According to Colorado law you must commence any legal action based upon any defect in this survey within three years after you first discover such defect. In no event may any action based upon any defect in this survey be commenced more than ten years from the date of the certification shown hereon.

SHEET 3 OF 3