

US ROCKIES WATTENBERG PLANNING

WELD-NAD83-UTMFT13N
2N-65W-16 Cook #2 Pad
COOK 38N-28HZ

Plan A

Plan: Permit Rev-1

Sperry Drilling Services Proposal Report

19 March, 2015

Well Coordinates: 14,575,352.51 N, 1,734,869.53 E (40° 07' 58.88" N, 104° 39' 43.46" W)
Ground Level: 4,878.00 usft

Local Coordinate Origin:	Centered on Well COOK 38N-28HZ
Viewing Datum:	RKB = 17' @ 4895.00usft (D Rig)
TVDs to System:	N
North Reference:	True
Unit System:	Dec-Deg - API - US Survey Feet - Custom

Version: 5000.1 Build: 70

HALLIBURTON

Project: WELD-NAD83-UTMFT13N
Site: 2N-65W-16 Cook #2 Pad
Well: COOK 38N-28HZ
Wellbore: Plan A
Design: Permit Rev-1

US ROCKIES WATTENBERG PLANNING

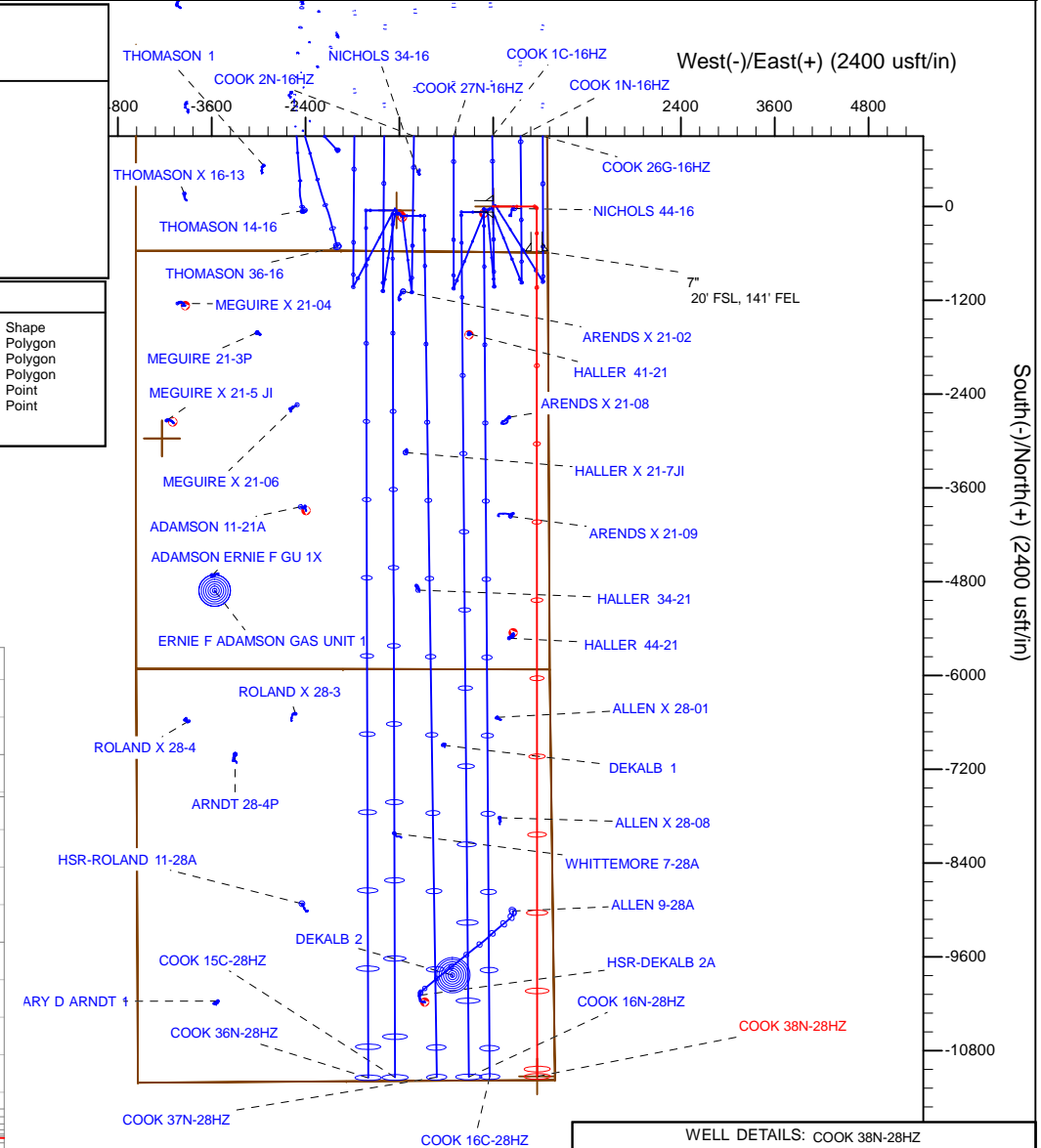
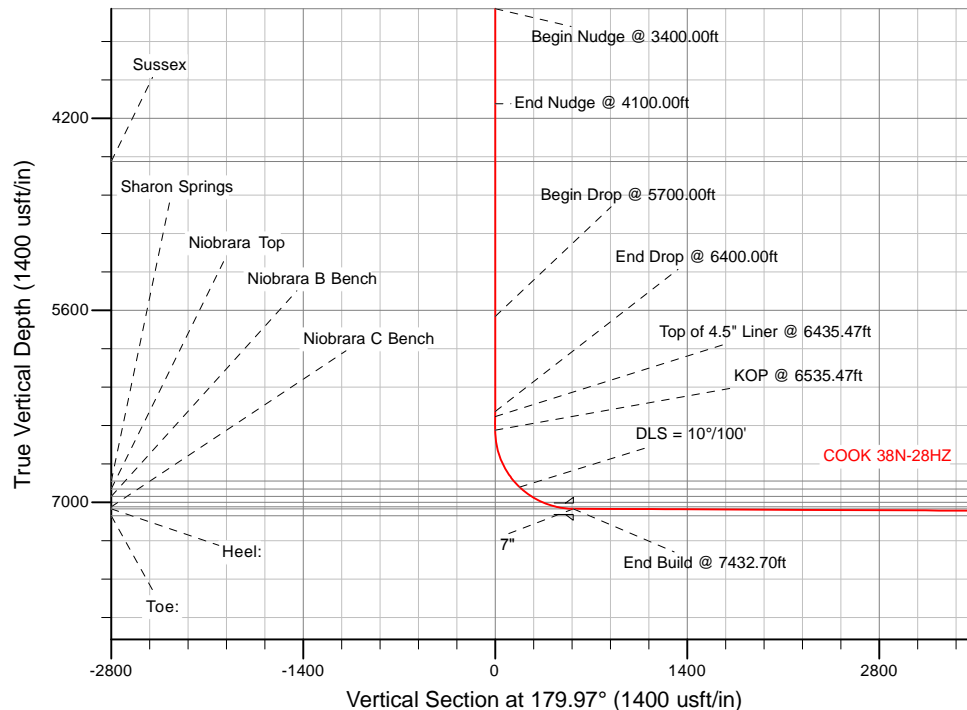
HALLIBURTON
Sperry Drilling

SECTION DETAILS

Sec	MD	Inc	Azi	TVD	+N/-S	+E/-W	Dleg	TFace	VSec	Target
1	0.00	0.00	0.00	0.00	0.00	0.00	0.00	0.00	0.00	
2	3400.00	0.00	0.00	3400.00	0.00	0.00	0.00	0.00	0.00	
3	4100.00	14.00	90.00	4093.06	0.00	85.10	2.00	90.00	0.04	
4	5700.00	14.00	90.00	5645.53	0.00	472.17	0.00	0.00	0.25	
5	6400.00	0.00	0.00	6338.58	0.00	557.27	2.00	-180.00	0.29	
6	6535.47	0.00	0.00	6474.05	0.00	557.27	0.00	0.00	0.29	
7	7432.70	89.72	179.97	7047.00	-570.19	557.57	10.00	179.97	570.48	
8	17994.09	89.72	179.97	7098.00	-11131.45	563.15	0.00	0.00	1131.74	COOK 38N-28HZ_BHL

WELLBORE TARGET DETAILS (LAT/LONG)

Name	TVD	+N/-S	+E/-W	Latitude	Longitude	Shape
2N-R65W-Sec. 16_Section Lines	-18.00	-2968.09	-4235.80	40.124871	-104.677226	Polygon
2N-R65W-Sec. 21_Section Lines	-18.00	-2968.09	-4235.80	40.124871	-104.677226	Polygon
2N-R65W-Sec. 28_Section Lines	-6.00	-51.25	-1236.11	40.132882	-104.666496	Polygon
COOK 38N-28HZ_SHL	0.00	0.00	0.00	40.133023	-104.662073	Point
COOK 38N-28HZ_BHL	7098.00	-11131.45	563.15	40.102454	-104.660059	Point



WELL DETAILS: COOK 38N-28HZ	
Ground Level:	4878.00
RKB = 17" @ 4895.00usft (D Rig)	
Plan: Permit Rev-1 (COOK 38N-28HZ/Plan A)	
Created By: Clint Eshelman	Date: 3/10/2015
Reviewed: _____	Date: _____

Plan Report for COOK 38N-28HZ - Permit Rev-1

Measured Depth (usft)	Inclination (°)	Azimuth (°)	Vertical Depth (usft)	+N/-S (usft)	+E/-W (usft)	Vertical Section (usft)	Dogleg Rate (°/100usft)	Build Rate (°/100usft)	Turn Rate (°/100usft)	Toolface Azimuth (°)
0.00	0.00	0.00	0.00	0.00	0.00	0.00	0.00	0.00	0.00	0.00
2N-R65W-Sec. 28_Section Lines - 2N-R65W-Sec. 16_Section Lines - 2N-R65W-Sec. 21_Section Lines - COOK 38N-28HZ_SHL										
100.00	0.00	0.00	100.00	0.00	0.00	0.00	0.00	0.00	0.00	0.00
200.00	0.00	0.00	200.00	0.00	0.00	0.00	0.00	0.00	0.00	0.00
300.00	0.00	0.00	300.00	0.00	0.00	0.00	0.00	0.00	0.00	0.00
400.00	0.00	0.00	400.00	0.00	0.00	0.00	0.00	0.00	0.00	0.00
500.00	0.00	0.00	500.00	0.00	0.00	0.00	0.00	0.00	0.00	0.00
600.00	0.00	0.00	600.00	0.00	0.00	0.00	0.00	0.00	0.00	0.00
700.00	0.00	0.00	700.00	0.00	0.00	0.00	0.00	0.00	0.00	0.00
800.00	0.00	0.00	800.00	0.00	0.00	0.00	0.00	0.00	0.00	0.00
900.00	0.00	0.00	900.00	0.00	0.00	0.00	0.00	0.00	0.00	0.00
1,000.00	0.00	0.00	1,000.00	0.00	0.00	0.00	0.00	0.00	0.00	0.00
1,100.00	0.00	0.00	1,100.00	0.00	0.00	0.00	0.00	0.00	0.00	0.00
1,200.00	0.00	0.00	1,200.00	0.00	0.00	0.00	0.00	0.00	0.00	0.00
1,300.00	0.00	0.00	1,300.00	0.00	0.00	0.00	0.00	0.00	0.00	0.00
1,350.00	0.00	0.00	1,350.00	0.00	0.00	0.00	0.00	0.00	0.00	0.00
9 5/8"										
1,400.00	0.00	0.00	1,400.00	0.00	0.00	0.00	0.00	0.00	0.00	0.00
1,500.00	0.00	0.00	1,500.00	0.00	0.00	0.00	0.00	0.00	0.00	0.00
1,600.00	0.00	0.00	1,600.00	0.00	0.00	0.00	0.00	0.00	0.00	0.00
1,700.00	0.00	0.00	1,700.00	0.00	0.00	0.00	0.00	0.00	0.00	0.00
1,800.00	0.00	0.00	1,800.00	0.00	0.00	0.00	0.00	0.00	0.00	0.00
1,900.00	0.00	0.00	1,900.00	0.00	0.00	0.00	0.00	0.00	0.00	0.00
2,000.00	0.00	0.00	2,000.00	0.00	0.00	0.00	0.00	0.00	0.00	0.00
2,100.00	0.00	0.00	2,100.00	0.00	0.00	0.00	0.00	0.00	0.00	0.00
2,200.00	0.00	0.00	2,200.00	0.00	0.00	0.00	0.00	0.00	0.00	0.00
2,300.00	0.00	0.00	2,300.00	0.00	0.00	0.00	0.00	0.00	0.00	0.00
2,400.00	0.00	0.00	2,400.00	0.00	0.00	0.00	0.00	0.00	0.00	0.00
2,500.00	0.00	0.00	2,500.00	0.00	0.00	0.00	0.00	0.00	0.00	0.00
2,600.00	0.00	0.00	2,600.00	0.00	0.00	0.00	0.00	0.00	0.00	0.00
2,700.00	0.00	0.00	2,700.00	0.00	0.00	0.00	0.00	0.00	0.00	0.00
2,800.00	0.00	0.00	2,800.00	0.00	0.00	0.00	0.00	0.00	0.00	0.00
2,900.00	0.00	0.00	2,900.00	0.00	0.00	0.00	0.00	0.00	0.00	0.00
3,000.00	0.00	0.00	3,000.00	0.00	0.00	0.00	0.00	0.00	0.00	0.00
3,100.00	0.00	0.00	3,100.00	0.00	0.00	0.00	0.00	0.00	0.00	0.00
3,200.00	0.00	0.00	3,200.00	0.00	0.00	0.00	0.00	0.00	0.00	0.00
3,300.00	0.00	0.00	3,300.00	0.00	0.00	0.00	0.00	0.00	0.00	0.00
3,400.00	0.00	0.00	3,400.00	0.00	0.00	0.00	0.00	0.00	0.00	0.00
Begin Nudge @ 3400.00ft										
3,500.00	2.00	90.00	3,499.98	0.00	1.75	0.00	2.00	2.00	0.00	90.00
3,600.00	4.00	90.00	3,599.84	0.00	6.98	0.00	2.00	2.00	0.00	0.00
3,700.00	6.00	90.00	3,699.45	0.00	15.69	0.01	2.00	2.00	0.00	0.00
3,800.00	8.00	90.00	3,798.70	0.00	27.88	0.01	2.00	2.00	0.00	0.00
3,900.00	10.00	90.00	3,897.47	0.00	43.52	0.02	2.00	2.00	0.00	0.00
4,000.00	12.00	90.00	3,995.62	0.00	62.60	0.03	2.00	2.00	0.00	0.00
4,100.00	14.00	90.00	4,093.06	0.00	85.10	0.04	2.00	2.00	0.00	0.00
End Nudge @ 4100.00ft										
4,200.00	14.00	90.00	4,190.08	0.00	109.29	0.06	0.00	0.00	0.00	0.00
4,300.00	14.00	90.00	4,287.11	0.00	133.48	0.07	0.00	0.00	0.00	0.00
4,400.00	14.00	90.00	4,384.14	0.00	157.67	0.08	0.00	0.00	0.00	0.00
4,500.00	14.00	90.00	4,481.17	0.00	181.87	0.10	0.00	0.00	0.00	0.00
4,534.86	14.00	90.00	4,515.00	0.00	190.30	0.10	0.00	0.00	0.00	0.00
Sussex										
4,600.00	14.00	90.00	4,578.20	0.00	206.06	0.11	0.00	0.00	0.00	0.00
4,700.00	14.00	90.00	4,675.23	0.00	230.25	0.12	0.00	0.00	0.00	0.00
4,800.00	14.00	90.00	4,772.26	0.00	254.44	0.13	0.00	0.00	0.00	0.00
4,900.00	14.00	90.00	4,869.29	0.00	278.63	0.15	0.00	0.00	0.00	0.00
5,000.00	14.00	90.00	4,966.32	0.00	302.83	0.16	0.00	0.00	0.00	0.00

Plan Report for COOK 38N-28HZ - Permit Rev-1

Measured Depth (usft)	Inclination (°)	Azimuth (°)	Vertical Depth (usft)	+N/-S (usft)	+E/-W (usft)	Vertical Section (usft)	Dogleg Rate (°/100usft)	Build Rate (°/100usft)	Turn Rate (°/100usft)	Toolface Azimuth (°)
5,100.00	14.00	90.00	5,063.35	0.00	327.02	0.17	0.00	0.00	0.00	0.00
5,200.00	14.00	90.00	5,160.38	0.00	351.21	0.18	0.00	0.00	0.00	0.00
5,300.00	14.00	90.00	5,257.41	0.00	375.40	0.20	0.00	0.00	0.00	0.00
5,400.00	14.00	90.00	5,354.44	0.00	399.59	0.21	0.00	0.00	0.00	0.00
5,500.00	14.00	90.00	5,451.47	0.00	423.79	0.22	0.00	0.00	0.00	0.00
5,600.00	14.00	90.00	5,548.50	0.00	447.98	0.23	0.00	0.00	0.00	0.00
5,700.00	14.00	90.00	5,645.53	0.00	472.17	0.25	0.00	0.00	0.00	0.00
Begin Drop @ 5700.00ft										
5,800.00	12.00	90.00	5,742.96	0.00	494.67	0.26	2.00	-2.00	0.00	-180.00
5,900.00	10.00	90.00	5,841.12	0.00	513.75	0.27	2.00	-2.00	0.00	-180.00
6,000.00	8.00	90.00	5,939.88	0.00	529.39	0.28	2.00	-2.00	0.00	-180.00
6,100.00	6.00	90.00	6,039.13	0.00	541.57	0.28	2.00	-2.00	0.00	-180.00
6,200.00	4.00	90.00	6,138.75	0.00	550.29	0.29	2.00	-2.00	0.00	-180.00
6,300.00	2.00	90.00	6,238.60	0.00	555.52	0.29	2.00	-2.00	0.00	-180.00
6,400.00	0.00	0.00	6,338.58	0.00	557.27	0.29	2.00	-2.00	-90.00	-180.00
End Drop @ 6400.00ft										
6,435.47	0.00	0.00	6,374.05	0.00	557.27	0.29	0.00	0.00	0.00	180.00
Top of 4.5" Liner @ 6435.47ft										
6,500.00	0.00	0.00	6,438.58	0.00	557.27	0.29	0.00	0.00	0.00	0.00
6,535.47	0.00	0.00	6,474.05	0.00	557.27	0.29	0.00	0.00	0.00	0.00
KOP @ 6535.47ft										
6,600.00	6.45	179.97	6,538.45	-3.63	557.27	3.92	10.00	10.00	278.89	179.97
6,700.00	16.45	179.97	6,636.33	-23.46	557.28	23.75	10.00	10.00	0.00	0.00
6,800.00	26.45	179.97	6,729.29	-59.99	557.30	60.28	10.00	10.00	0.00	0.00
6,900.00	36.45	179.97	6,814.48	-112.10	557.33	112.39	10.00	10.00	0.00	0.00
6,939.10	40.36	179.97	6,845.12	-136.39	557.34	136.68	10.00	10.00	0.00	0.00
Sharon Springs										
7,000.00	46.45	179.97	6,889.34	-178.22	557.36	178.51	10.00	10.00	0.00	0.00
DLS = 10°/100'										
7,020.39	48.49	179.97	6,903.12	-193.24	557.37	193.53	10.00	10.00	0.00	0.00
Niobrara Top										
7,100.00	56.45	179.97	6,951.58	-256.33	557.40	256.62	10.00	10.00	0.00	0.00
7,110.51	57.50	179.97	6,957.30	-265.14	557.41	265.43	10.00	10.00	0.00	0.00
Niobrara B Bench										
7,200.00	66.45	179.97	6,999.30	-344.06	557.45	344.35	10.00	10.00	0.00	0.00
7,300.00	76.45	179.97	7,031.07	-438.75	557.50	439.04	10.00	10.00	0.00	0.00
7,305.68	77.02	179.97	7,032.37	-444.27	557.50	444.57	10.00	10.00	0.00	0.00
Niobrara C Bench										
7,400.00	86.45	179.97	7,045.91	-537.51	557.55	537.80	10.00	10.00	0.00	0.00
7,432.70	89.72	179.97	7,047.00	-570.19	557.57	570.48	10.00	10.00	0.00	0.00
End Build @ 7432.70ft - Heel: - 7"										
7,500.00	89.72	179.97	7,047.33	-637.49	557.60	637.78	0.00	0.00	0.00	0.00
7,600.00	89.72	179.97	7,047.81	-737.49	557.66	737.78	0.00	0.00	0.00	0.00
7,700.00	89.72	179.97	7,048.30	-837.48	557.71	837.78	0.00	0.00	0.00	0.00
7,800.00	89.72	179.97	7,048.78	-937.48	557.76	937.78	0.00	0.00	0.00	0.00
7,900.00	89.72	179.97	7,049.26	-1,037.48	557.82	1,037.77	0.00	0.00	0.00	0.00
8,000.00	89.72	179.97	7,049.74	-1,137.48	557.87	1,137.77	0.00	0.00	0.00	0.00
8,100.00	89.72	179.97	7,050.23	-1,237.48	557.92	1,237.77	0.00	0.00	0.00	0.00
8,200.00	89.72	179.97	7,050.71	-1,337.48	557.97	1,337.77	0.00	0.00	0.00	0.00
8,300.00	89.72	179.97	7,051.19	-1,437.48	558.03	1,437.77	0.00	0.00	0.00	0.00
8,400.00	89.72	179.97	7,051.68	-1,537.48	558.08	1,537.77	0.00	0.00	0.00	0.00
8,500.00	89.72	179.97	7,052.16	-1,637.48	558.13	1,637.77	0.00	0.00	0.00	0.00
8,600.00	89.72	179.97	7,052.64	-1,737.47	558.19	1,737.77	0.00	0.00	0.00	0.00
8,700.00	89.72	179.97	7,053.12	-1,837.47	558.24	1,837.76	0.00	0.00	0.00	0.00
8,800.00	89.72	179.97	7,053.61	-1,937.47	558.29	1,937.76	0.00	0.00	0.00	0.00
8,900.00	89.72	179.97	7,054.09	-2,037.47	558.34	2,037.76	0.00	0.00	0.00	0.00
9,000.00	89.72	179.97	7,054.57	-2,137.47	558.40	2,137.76	0.00	0.00	0.00	0.00
9,100.00	89.72	179.97	7,055.06	-2,237.47	558.45	2,237.76	0.00	0.00	0.00	0.00

Plan Report for COOK 38N-28HZ - Permit Rev-1

Measured Depth (usft)	Inclination (°)	Azimuth (°)	Vertical Depth (usft)	+N/-S (usft)	+E/-W (usft)	Vertical Section (usft)	Dogleg Rate (°/100usft)	Build Rate (°/100usft)	Turn Rate (°/100usft)	Toolface Azimuth (°)
9,200.00	89.72	179.97	7,055.54	-2,337.47	558.50	2,337.76	0.00	0.00	0.00	0.00
9,300.00	89.72	179.97	7,056.02	-2,437.47	558.56	2,437.76	0.00	0.00	0.00	0.00
9,400.00	89.72	179.97	7,056.50	-2,537.46	558.61	2,537.76	0.00	0.00	0.00	0.00
9,500.00	89.72	179.97	7,056.99	-2,637.46	558.66	2,637.76	0.00	0.00	0.00	0.00
9,600.00	89.72	179.97	7,057.47	-2,737.46	558.71	2,737.75	0.00	0.00	0.00	0.00
9,700.00	89.72	179.97	7,057.95	-2,837.46	558.77	2,837.75	0.00	0.00	0.00	0.00
9,800.00	89.72	179.97	7,058.44	-2,937.46	558.82	2,937.75	0.00	0.00	0.00	0.00
9,900.00	89.72	179.97	7,058.92	-3,037.46	558.87	3,037.75	0.00	0.00	0.00	0.00
10,000.00	89.72	179.97	7,059.40	-3,137.46	558.93	3,137.75	0.00	0.00	0.00	0.00
10,100.00	89.72	179.97	7,059.88	-3,237.46	558.98	3,237.75	0.00	0.00	0.00	0.00
10,200.00	89.72	179.97	7,060.37	-3,337.46	559.03	3,337.75	0.00	0.00	0.00	0.00
10,300.00	89.72	179.97	7,060.85	-3,437.45	559.08	3,437.75	0.00	0.00	0.00	0.00
10,400.00	89.72	179.97	7,061.33	-3,537.45	559.14	3,537.74	0.00	0.00	0.00	0.00
10,500.00	89.72	179.97	7,061.82	-3,637.45	559.19	3,637.74	0.00	0.00	0.00	0.00
10,600.00	89.72	179.97	7,062.30	-3,737.45	559.24	3,737.74	0.00	0.00	0.00	0.00
10,700.00	89.72	179.97	7,062.78	-3,837.45	559.30	3,837.74	0.00	0.00	0.00	0.00
10,800.00	89.72	179.97	7,063.26	-3,937.45	559.35	3,937.74	0.00	0.00	0.00	0.00
10,900.00	89.72	179.97	7,063.75	-4,037.45	559.40	4,037.74	0.00	0.00	0.00	0.00
11,000.00	89.72	179.97	7,064.23	-4,137.45	559.45	4,137.74	0.00	0.00	0.00	0.00
11,100.00	89.72	179.97	7,064.71	-4,237.44	559.51	4,237.74	0.00	0.00	0.00	0.00
11,200.00	89.72	179.97	7,065.19	-4,337.44	559.56	4,337.74	0.00	0.00	0.00	0.00
11,300.00	89.72	179.97	7,065.68	-4,437.44	559.61	4,437.73	0.00	0.00	0.00	0.00
11,400.00	89.72	179.97	7,066.16	-4,537.44	559.67	4,537.73	0.00	0.00	0.00	0.00
11,500.00	89.72	179.97	7,066.64	-4,637.44	559.72	4,637.73	0.00	0.00	0.00	0.00
11,600.00	89.72	179.97	7,067.13	-4,737.44	559.77	4,737.73	0.00	0.00	0.00	0.00
11,700.00	89.72	179.97	7,067.61	-4,837.44	559.82	4,837.73	0.00	0.00	0.00	0.00
11,800.00	89.72	179.97	7,068.09	-4,937.44	559.88	4,937.73	0.00	0.00	0.00	0.00
11,900.00	89.72	179.97	7,068.57	-5,037.43	559.93	5,037.73	0.00	0.00	0.00	0.00
12,000.00	89.72	179.97	7,069.06	-5,137.43	559.98	5,137.73	0.00	0.00	0.00	0.00
12,100.00	89.72	179.97	7,069.54	-5,237.43	560.04	5,237.73	0.00	0.00	0.00	0.00
12,200.00	89.72	179.97	7,070.02	-5,337.43	560.09	5,337.72	0.00	0.00	0.00	0.00
12,300.00	89.72	179.97	7,070.51	-5,437.43	560.14	5,437.72	0.00	0.00	0.00	0.00
12,400.00	89.72	179.97	7,070.99	-5,537.43	560.19	5,537.72	0.00	0.00	0.00	0.00
12,500.00	89.72	179.97	7,071.47	-5,637.43	560.25	5,637.72	0.00	0.00	0.00	0.00
12,600.00	89.72	179.97	7,071.95	-5,737.43	560.30	5,737.72	0.00	0.00	0.00	0.00
12,700.00	89.72	179.97	7,072.44	-5,837.43	560.35	5,837.72	0.00	0.00	0.00	0.00
12,800.00	89.72	179.97	7,072.92	-5,937.42	560.41	5,937.72	0.00	0.00	0.00	0.00
12,900.00	89.72	179.97	7,073.40	-6,037.42	560.46	6,037.72	0.00	0.00	0.00	0.00
13,000.00	89.72	179.97	7,073.89	-6,137.42	560.51	6,137.71	0.00	0.00	0.00	0.00
13,100.00	89.72	179.97	7,074.37	-6,237.42	560.56	6,237.71	0.00	0.00	0.00	0.00
13,200.00	89.72	179.97	7,074.85	-6,337.42	560.62	6,337.71	0.00	0.00	0.00	0.00
13,300.00	89.72	179.97	7,075.33	-6,437.42	560.67	6,437.71	0.00	0.00	0.00	0.00
13,400.00	89.72	179.97	7,075.82	-6,537.42	560.72	6,537.71	0.00	0.00	0.00	0.00
13,500.00	89.72	179.97	7,076.30	-6,637.42	560.78	6,637.71	0.00	0.00	0.00	0.00
13,600.00	89.72	179.97	7,076.78	-6,737.41	560.83	6,737.71	0.00	0.00	0.00	0.00
13,700.00	89.72	179.97	7,077.27	-6,837.41	560.88	6,837.71	0.00	0.00	0.00	0.00
13,800.00	89.72	179.97	7,077.75	-6,937.41	560.93	6,937.71	0.00	0.00	0.00	0.00
13,900.00	89.72	179.97	7,078.23	-7,037.41	560.99	7,037.70	0.00	0.00	0.00	0.00
14,000.00	89.72	179.97	7,078.71	-7,137.41	561.04	7,137.70	0.00	0.00	0.00	0.00
14,100.00	89.72	179.97	7,079.20	-7,237.41	561.09	7,237.70	0.00	0.00	0.00	0.00
14,200.00	89.72	179.97	7,079.68	-7,337.41	561.15	7,337.70	0.00	0.00	0.00	0.00
14,300.00	89.72	179.97	7,080.16	-7,437.41	561.20	7,437.70	0.00	0.00	0.00	0.00
14,400.00	89.72	179.97	7,080.65	-7,537.41	561.25	7,537.70	0.00	0.00	0.00	0.00
14,500.00	89.72	179.97	7,081.13	-7,637.40	561.30	7,637.70	0.00	0.00	0.00	0.00
14,600.00	89.72	179.97	7,081.61	-7,737.40	561.36	7,737.70	0.00	0.00	0.00	0.00
14,700.00	89.72	179.97	7,082.09	-7,837.40	561.41	7,837.69	0.00	0.00	0.00	0.00
14,800.00	89.72	179.97	7,082.58	-7,937.40	561.46	7,937.69	0.00	0.00	0.00	0.00
14,900.00	89.72	179.97	7,083.06	-8,037.40	561.52	8,037.69	0.00	0.00	0.00	0.00
15,000.00	89.72	179.97	7,083.54	-8,137.40	561.57	8,137.69	0.00	0.00	0.00	0.00
15,100.00	89.72	179.97	7,084.03	-8,237.40	561.62	8,237.69	0.00	0.00	0.00	0.00

Plan Report for COOK 38N-28HZ - Permit Rev-1

Measured Depth (usft)	Inclination (°)	Azimuth (°)	Vertical Depth (usft)	+N/-S (usft)	+E/-W (usft)	Vertical Section (usft)	Dogleg Rate (°/100usft)	Build Rate (°/100usft)	Turn Rate (°/100usft)	Toolface Azimuth (°)
15,200.00	89.72	179.97	7,084.51	-8,337.40	561.67	8,337.69	0.00	0.00	0.00	0.00
15,300.00	89.72	179.97	7,084.99	-8,437.39	561.73	8,437.69	0.00	0.00	0.00	0.00
15,400.00	89.72	179.97	7,085.47	-8,537.39	561.78	8,537.69	0.00	0.00	0.00	0.00
15,500.00	89.72	179.97	7,085.96	-8,637.39	561.83	8,637.69	0.00	0.00	0.00	0.00
15,600.00	89.72	179.97	7,086.44	-8,737.39	561.88	8,737.68	0.00	0.00	0.00	0.00
15,700.00	89.72	179.97	7,086.92	-8,837.39	561.94	8,837.68	0.00	0.00	0.00	0.00
15,800.00	89.72	179.97	7,087.41	-8,937.39	561.99	8,937.68	0.00	0.00	0.00	0.00
15,900.00	89.72	179.97	7,087.89	-9,037.39	562.04	9,037.68	0.00	0.00	0.00	0.00
16,000.00	89.72	179.97	7,088.37	-9,137.39	562.10	9,137.68	0.00	0.00	0.00	0.00
16,100.00	89.72	179.97	7,088.85	-9,237.39	562.15	9,237.68	0.00	0.00	0.00	0.00
16,200.00	89.72	179.97	7,089.34	-9,337.38	562.20	9,337.68	0.00	0.00	0.00	0.00
16,300.00	89.72	179.97	7,089.82	-9,437.38	562.25	9,437.68	0.00	0.00	0.00	0.00
16,400.00	89.72	179.97	7,090.30	-9,537.38	562.31	9,537.67	0.00	0.00	0.00	0.00
16,500.00	89.72	179.97	7,090.79	-9,637.38	562.36	9,637.67	0.00	0.00	0.00	0.00
16,600.00	89.72	179.97	7,091.27	-9,737.38	562.41	9,737.67	0.00	0.00	0.00	0.00
16,700.00	89.72	179.97	7,091.75	-9,837.38	562.47	9,837.67	0.00	0.00	0.00	0.00
16,800.00	89.72	179.97	7,092.23	-9,937.38	562.52	9,937.67	0.00	0.00	0.00	0.00
16,900.00	89.72	179.97	7,092.72	-10,037.38	562.57	10,037.67	0.00	0.00	0.00	0.00
17,000.00	89.72	179.97	7,093.20	-10,137.37	562.62	10,137.67	0.00	0.00	0.00	0.00
17,100.00	89.72	179.97	7,093.68	-10,237.37	562.68	10,237.67	0.00	0.00	0.00	0.00
17,200.00	89.72	179.97	7,094.17	-10,337.37	562.73	10,337.67	0.00	0.00	0.00	0.00
17,300.00	89.72	179.97	7,094.65	-10,437.37	562.78	10,437.66	0.00	0.00	0.00	0.00
17,400.00	89.72	179.97	7,095.13	-10,537.37	562.84	10,537.66	0.00	0.00	0.00	0.00
17,500.00	89.72	179.97	7,095.61	-10,637.37	562.89	10,637.66	0.00	0.00	0.00	0.00
17,600.00	89.72	179.97	7,096.10	-10,737.37	562.94	10,737.66	0.00	0.00	0.00	0.00
17,700.00	89.72	179.97	7,096.58	-10,837.37	562.99	10,837.66	0.00	0.00	0.00	0.00
17,800.00	89.72	179.97	7,097.06	-10,937.37	563.05	10,937.66	0.00	0.00	0.00	0.00
17,900.00	89.72	179.97	7,097.55	-11,037.36	563.10	11,037.66	0.00	0.00	0.00	0.00
17,994.08	89.72	179.97	7,098.00	-11,131.44	563.15	11,131.74	0.00	0.00	0.00	0.00
Toe:										
17,994.09	89.72	179.97	7,098.00	-11,131.45	563.15	11,131.74	0.01	0.00	0.00	0.00
TD Well @ 17994.09ft - COOK 38N-28HZ_BHL										

Plan Annotations

Measured Depth (usft)	Vertical Depth (usft)	Local Coordinates +N/-S (usft)	+E/-W (usft)	Comment
3,400.00	3,400.00	0.00	0.00	Begin Nudge @ 3400.00ft
4,100.00	4,093.06	0.00	85.10	End Nudge @ 4100.00ft
5,700.00	5,645.53	0.00	472.17	Begin Drop @ 5700.00ft
6,400.00	6,338.58	0.00	557.27	End Drop @ 6400.00ft
6,435.47	6,374.05	0.00	557.27	Top of 4.5" Liner @ 6435.47ft
6,535.47	6,474.05	0.00	557.27	KOP @ 6535.47ft
7,000.00	6,889.34	-178.22	557.36	DLS = 10°/100'
7,432.70	7,047.00	-570.19	557.57	End Build @ 7432.70ft
17,994.09	7,098.00	-11,131.45	563.15	TD Well @ 17994.09ft

Vertical Section Information

Angle Type	Target	Azimuth (°)	Origin Type	Origin +N/_S (usft)	+E/-W (usft)	Start TVD (usft)
User	No Target (Freehand)	179.97	Slot	0.00	0.00	0.00

Plan Report for COOK 38N-28HZ - Permit Rev-1

Survey tool program

From (usft)	To (usft)	Survey/Plan	Survey Tool
0.00	7,432.70	Permit Rev-1	APC_ISCWSA REV 2 MWD+IFR1
7,432.70	17,994.09	Permit Rev-1	APC_ISCWSA REV 2 MWD+IFR1

Casing Details

Measured Depth (usft)	Vertical Depth (usft)	Name	Casing Diameter (")	Hole Diameter (")
1,350.00	1,350.00	9 5/8"	9-5/8	13-1/2
7,432.70	7,047.00	7"	7	8-3/4

Formation Details

Measured Depth (usft)	Vertical Depth (usft)	Name	Lithology	Dip (°)	Dip Direction (°)
4,534.86	4,515.00	Sussex		0.00	
6,939.10	6,845.12	Sharon Springs		0.00	
7,020.39	6,903.12	Niobrara Top		0.00	
7,110.51	6,957.30	Niobrara B Bench		0.00	
7,305.68	7,032.37	Niobrara C Bench		0.00	
7,432.70	7,047.00	Heel:		0.00	
17,994.08	7,098.00	Toe:		0.00	

Targets associated with this wellbore

Target Name	TVD (usft)	+N/-S (usft)	+E/-W (usft)	Shape
2N-R65W-Sec. 28_Section Lines	-6.00	-51.25	-1,236.11	Polygon
2N-R65W-Sec. 16_Section Lines	-18.00	-2,968.09	-4,235.80	Polygon
2N-R65W-Sec. 21_Section Lines	-18.00	-2,968.09	-4,235.80	Polygon
COOK 38N-28HZ_SHL	0.00	0.00	0.00	Point
COOK 38N-28HZ_BHL	7,098.00	-11,131.45	563.15	Point

North Reference Sheet for 2N-65W-16 Cook #2 Pad - COOK 38N-28HZ - Plan A

All data is in US Feet unless otherwise stated. Directions and Coordinates are relative to True North Reference.

Vertical Depths are relative to RKB = 17' @ 4895.00usft (D Rig). Northing and Easting are relative to COOK 38N-28HZ

Coordinate System is Universal Transverse Mercator (US Survey Feet), Zone 13N (108 W to 102 W) using datum North American Datum 1983, ellipsoid

Projection method is Transverse Mercator (Gauss-Kruger)

Central Meridian is -105.00°, Longitude Origin:0.000000°, Latitude Origin:0.000000°

False Easting: 1,640,416.67usft, False Northing: 0.00usft, Scale Reduction: 0.99961020

Grid Coordinates of Well: 14,575,352.51 usft N, 1,734,869.53 usft E

Geographical Coordinates of Well: 40° 07' 58.88" N, 104° 39' 43.46" W

Grid Convergence at Surface is: 0.22°

Based upon Minimum Curvature type calculations, at a Measured Depth of 17,994.09usft
the Bottom Hole Displacement is 11,145.69usft in the Direction of 177.10° (True).

Magnetic Convergence at surface is: -8.07° (6 March 2015, , IGRF2010)

