

EXTRACTION OIL & GAS

Location: COLORADO Slot: SLOT#07 WESTWIND 7 (971'FSL & 252'FWL,SEC.07)
Field: WELD COUNTY (NAD83/TRUE NORTH) Well: WESTWIND 7
Facility: SEC.07-T06N-R67W Wellbore: WESTWIND 7 PWB

Plot reference wellpath is WESTWIND 7 PWP (REV-B.0)

True vertical depths are referenced to SAVANNA 802 (20'KB) (RKB)	Grid System: NAD83 / Lambert Colorado SP, Northern Zone (501), US feet
Measured depths are referenced to SAVANNA 802 (20'KB) (RKB)	North Reference: True north
SAVANNA 802 (20'KB) (RKB) to Mean Sea Level: 4839 feet	Scale: True distance
Mean Sea Level to Mud line (At Slot: SLOT#07 WESTWIND 7 (971'FSL & 252'FWL,SEC.07)): 0 feet	Depths are in feet
Coordinates are in feet referenced to Slot	Created by: hanisab on 8/6/2015

Location Information

Facility Name			Grid East (US ft)	Grid North (US ft)	Latitude	Longitude
SEC.07-T06N-R67W			3154839.470	1424332.263	40°29'48.692"N	104°56'35.682"W
Slot	Local N (ft)	Local E (ft)	Grid East (US ft)	Grid North (US ft)	Latitude	Longitude
SLOT#07 WESTWIND 7 (971'FSL & 252'FWL,SEC.07)	-150.08	2.47	3154842.884	1424182.208	40°29'47.209"N	104°56'35.650"W
SAVANNA 802 (20'KB) (RKB) to Mud line (At Slot: SLOT#07 WESTWIND 7 (971'FSL & 252'FWL,SEC.07))					4839ft	
Mean Sea Level to Mud line (At Slot: SLOT#07 WESTWIND 7 (971'FSL & 252'FWL,SEC.07))					0ft	
SAVANNA 802 (20'KB) (RKB) to Mean Sea Level					4839ft	

Targets

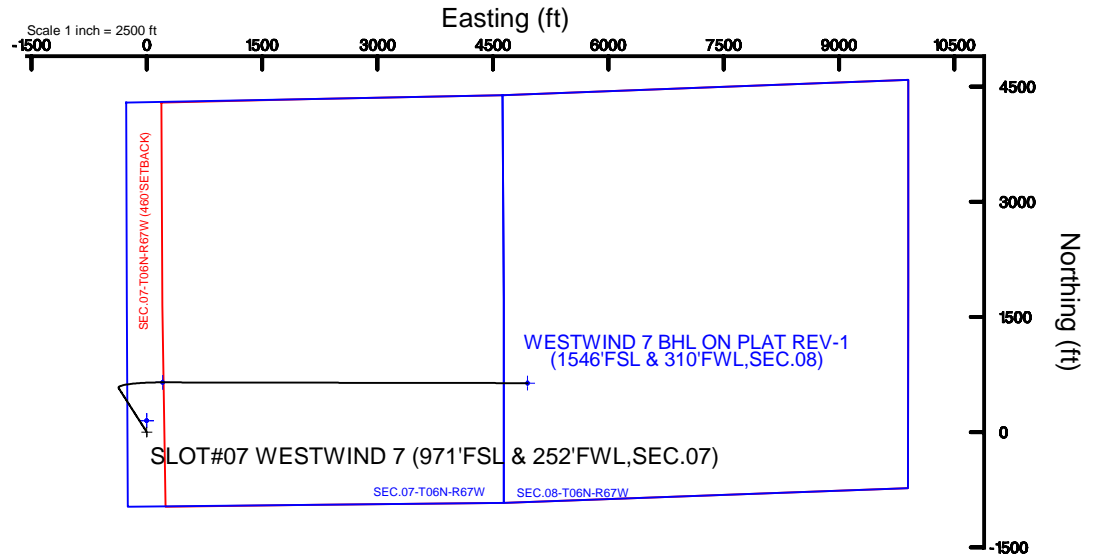
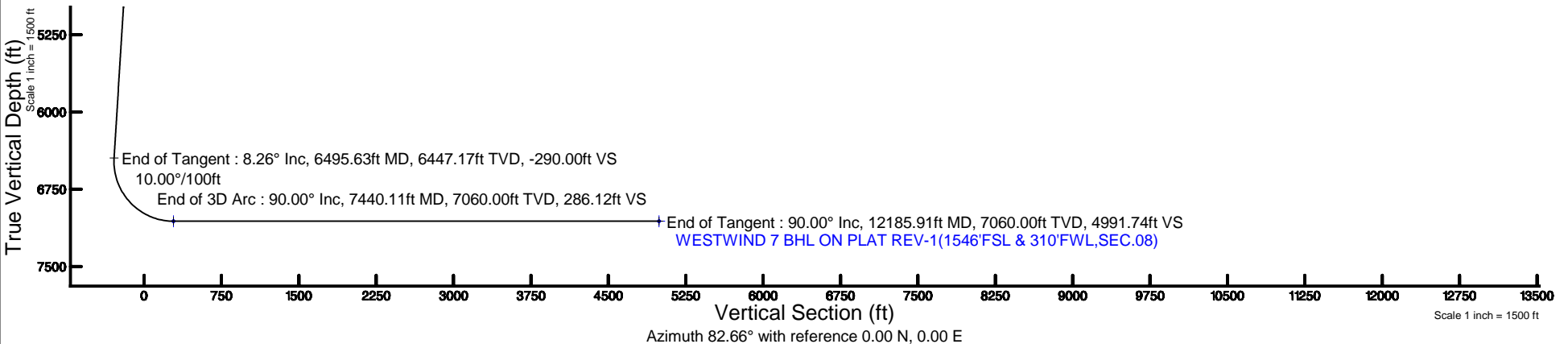
Name	MD (ft)	TVD (ft)	Local N (ft)	Local E (ft)	Grid East (US ft)	Grid North (US ft)	Latitude	Longitude
SEC.07-T06N-R67W		-4.00	150.12	-2.47	3154839.47	1424332.30	40°29'48.692"N	104°56'35.682"W
SEC.08-T06N-R67W		-4.00	150.12	-2.47	3154839.47	1424332.30	40°29'48.692"N	104°56'35.682"W
SEC.07-T06N-R67W (460'SETBACK)		7060.00	150.08	-2.47	3154839.47	1424332.26	40°29'48.692"N	104°56'35.682"W
WESTWIND 7 BHL ON PLAT REV-1(1546'FSL & 310'FWL,SEC.08)	12185.91	7060.00	638.07	4950.79	3159789.39	1424851.33	40°29'53.509"N	104°55'31.566"W
WESTWIND 7 LANDING	7440.11	7060.00	647.78	205.00	3155043.81	1424831.24	40°29'53.610"N	104°56'32.996"W

Survey Program

Start MD (ft)	End MD (ft)	Tool	Model	Log Name/Comment	Wellbore
20.00	12185.91	NaviTrak	NaviTrak (Standard)		WESTWIND 7 PWB

Well Profile Data

Design Comment	MD (ft)	Inc (°)	Az (°)	TVD (ft)	Local N (ft)	Local E (ft)	DLS (°/100ft)	VS (ft)
Tie On	20.00	0.000	327.452	20.00	0.00	0.00	0.00	0.00
End of Tangent	1550.00	0.000	327.452	1550.00	0.00	0.00	0.00	0.00
End of Build	1963.06	8.261	327.452	1961.63	25.06	-15.99	2.00	-12.66
End of Tangent	6495.63	8.261	327.452	6447.17	574.04	-366.38	0.00	-290.00
End of 3D Arc	7440.11	90.000	90.117	7060.00	647.78	205.00	10.00	286.12
End of Tangent	12185.91	90.000	90.117	7060.00	638.07	4950.79	0.00	4991.74



BGGM (1945.0 to 2017.0) Dip: 67.01° Field: 52668.7 nT
Magnetic North is 8.66 degrees East of True North (at 8/3/2015)

To correct azimuth from Magnetic to True add 8.66 degrees



Planned Wellpath Report

WESTWIND 7 PWP (REV-B.0)

Page 1 of 8



REFERENCE WELLPATH IDENTIFICATION

Operator	EXTRACTION OIL & GAS	Slot	SLOT#07 WESTWIND 7 (971'FSL & 252'FWL,SEC.07)
Area	COLORADO	Well	WESTWIND 7
Field	WELD COUNTY (NAD83/TRUE NORTH)	Wellbore	WESTWIND 7 PWB
Facility	SEC.07-T06N-R67W		

REPORT SETUP INFORMATION

Projection System	NAD83 / Lambert Colorado SP, Northern Zone (501), US feet	Software System	WellArchitect® 4.1.1
North Reference	True	User	Hanisab
Scale	0.999966	Report Generated	8/6/2015 at 11:57:04 AM
Convergence at slot	0.36° East	Database/Source file	WA_Denver/WESTWIND_7_PWB.xml

WELLPATH LOCATION

	Local coordinates		Grid coordinates		Geographic coordinates	
	North[ft]	East[ft]	Easting[US ft]	Northing[US ft]	Latitude	Longitude
Slot Location	-150.08	2.47	3154842.88	1424182.21	40°29'47.209"N	104°56'35.650"W
Facility Reference Pt			3154839.47	1424332.26	40°29'48.692"N	104°56'35.682"W
Field Reference Pt			3185481.27	1419166.81	40°28'55.560"N	104°49'59.556"W

WELLPATH DATUM

Calculation method	Minimum curvature	SAVANNA 802 (20'KB) (RKB) to Facility Vertical Datum	4839.00ft
Horizontal Reference Pt	Slot	SAVANNA 802 (20'KB) (RKB) to Mean Sea Level	4839.00ft
Vertical Reference Pt	SAVANNA 802 (20'KB) (RKB)	SAVANNA 802 (20'KB) (RKB) to Mud Line at Slot (SLOT#07 WESTWIND 7 (971'FSL & 252'FWL,SEC.07))	4839.00ft
MD Reference Pt	SAVANNA 802 (20'KB) (RKB)	Section Origin	N 0.00, E 0.00 ft
Field Vertical Reference	Mean Sea Level	Section Azimuth	82.66°



Planned Wellpath Report

WESTWIND 7 PWP (REV-B.0)
Page 2 of 8



REFERENCE WELLPATH IDENTIFICATION

Operator	EXTRACTION OIL & GAS	Slot	SLOT#07 WESTWIND 7 (971'FSL & 252'FWL,SEC.07)
Area	COLORADO	Well	WESTWIND 7
Field	WELD COUNTY (NAD83/TRUE NORTH)	Wellbore	WESTWIND 7 PWB
Facility	SEC.07-T06N-R67W		

WELLPATH DATA (128 stations) † = interpolated/extrapolated station

MD [ft]	Inclination [°]	Azimuth [°]	TVD [ft]	Vert Sect [ft]	North [ft]	East [ft]	DLS [°/100ft]	Comments
0.00†	0.000	327.452	0.00	0.00	0.00	0.00	0.00	
20.00	0.000	327.452	20.00	0.00	0.00	0.00	0.00	Tie On
120.00†	0.000	327.452	120.00	0.00	0.00	0.00	0.00	
220.00†	0.000	327.452	220.00	0.00	0.00	0.00	0.00	
320.00†	0.000	327.452	320.00	0.00	0.00	0.00	0.00	
420.00†	0.000	327.452	420.00	0.00	0.00	0.00	0.00	
520.00†	0.000	327.452	520.00	0.00	0.00	0.00	0.00	
620.00†	0.000	327.452	620.00	0.00	0.00	0.00	0.00	
720.00†	0.000	327.452	720.00	0.00	0.00	0.00	0.00	
820.00†	0.000	327.452	820.00	0.00	0.00	0.00	0.00	
920.00†	0.000	327.452	920.00	0.00	0.00	0.00	0.00	
1020.00†	0.000	327.452	1020.00	0.00	0.00	0.00	0.00	
1120.00†	0.000	327.452	1120.00	0.00	0.00	0.00	0.00	
1220.00†	0.000	327.452	1220.00	0.00	0.00	0.00	0.00	
1320.00†	0.000	327.452	1320.00	0.00	0.00	0.00	0.00	
1420.00†	0.000	327.452	1420.00	0.00	0.00	0.00	0.00	
1520.00†	0.000	327.452	1520.00	0.00	0.00	0.00	0.00	
1550.00	0.000	327.452	1550.00	0.00	0.00	0.00	0.00	End of Tangent
1620.00†	1.400	327.452	1619.99	-0.36	0.72	-0.46	2.00	
1720.00†	3.400	327.452	1719.90	-2.15	4.25	-2.71	2.00	
1820.00†	5.400	327.452	1819.60	-5.41	10.72	-6.84	2.00	
1920.00†	7.400	327.452	1918.97	-10.16	20.11	-12.84	2.00	
1963.06	8.261	327.452	1961.63	-12.66	25.06	-15.99	2.00	End of Build
2020.00†	8.261	327.452	2017.98	-16.14	31.95	-20.40	0.00	
2120.00†	8.261	327.452	2116.94	-22.26	44.07	-28.13	0.00	
2220.00†	8.261	327.452	2215.90	-28.38	56.18	-35.86	0.00	
2320.00†	8.261	327.452	2314.87	-34.50	68.29	-43.59	0.00	
2420.00†	8.261	327.452	2413.83	-40.62	80.40	-51.32	0.00	
2520.00†	8.261	327.452	2512.79	-46.74	92.51	-59.05	0.00	
2620.00†	8.261	327.452	2611.75	-52.86	104.63	-66.78	0.00	



Planned Wellpath Report

WESTWIND 7 PWP (REV-B.0)

Page 3 of 8



REFERENCE WELLPATH IDENTIFICATION

Operator	EXTRACTION OIL & GAS	Slot	SLOT#07 WESTWIND 7 (971'FSL & 252'FWL,SEC.07)
Area	COLORADO	Well	WESTWIND 7
Field	WELD COUNTY (NAD83/TRUE NORTH)	Wellbore	WESTWIND 7 PWB
Facility	SEC.07-T06N-R67W		

WELLPATH DATA (128 stations) † = interpolated/extrapolated station

MD [ft]	Inclination [°]	Azimuth [°]	TVD [ft]	Vert Sect [ft]	North [ft]	East [ft]	DLS [°/100ft]	Comments
2720.00†	8.261	327.452	2710.72	-58.97	116.74	-74.51	0.00	
2820.00†	8.261	327.452	2809.68	-65.09	128.85	-82.24	0.00	
2920.00†	8.261	327.452	2908.64	-71.21	140.96	-89.97	0.00	
3020.00†	8.261	327.452	3007.60	-77.33	153.07	-97.70	0.00	
3120.00†	8.261	327.452	3106.56	-83.45	165.19	-105.43	0.00	
3220.00†	8.261	327.452	3205.53	-89.57	177.30	-113.16	0.00	
3320.00†	8.261	327.452	3304.49	-95.69	189.41	-120.89	0.00	
3420.00†	8.261	327.452	3403.45	-101.81	201.52	-128.62	0.00	
3520.00†	8.261	327.452	3502.41	-107.93	213.63	-136.35	0.00	
3620.00†	8.261	327.452	3601.38	-114.04	225.75	-144.08	0.00	
3720.00†	8.261	327.452	3700.34	-120.16	237.86	-151.81	0.00	
3820.00†	8.261	327.452	3799.30	-126.28	249.97	-159.54	0.00	
3920.00†	8.261	327.452	3898.26	-132.40	262.08	-167.27	0.00	
4020.00†	8.261	327.452	3997.23	-138.52	274.19	-175.00	0.00	
4120.00†	8.261	327.452	4096.19	-144.64	286.31	-182.73	0.00	
4220.00†	8.261	327.452	4195.15	-150.76	298.42	-190.46	0.00	
4320.00†	8.261	327.452	4294.11	-156.88	310.53	-198.20	0.00	
4420.00†	8.261	327.452	4393.08	-162.99	322.64	-205.93	0.00	
4520.00†	8.261	327.452	4492.04	-169.11	334.75	-213.66	0.00	
4620.00†	8.261	327.452	4591.00	-175.23	346.87	-221.39	0.00	
4720.00†	8.261	327.452	4689.96	-181.35	358.98	-229.12	0.00	
4820.00†	8.261	327.452	4788.92	-187.47	371.09	-236.85	0.00	
4920.00†	8.261	327.452	4887.89	-193.59	383.20	-244.58	0.00	
5020.00†	8.261	327.452	4986.85	-199.71	395.31	-252.31	0.00	
5120.00†	8.261	327.452	5085.81	-205.83	407.43	-260.04	0.00	
5220.00†	8.261	327.452	5184.77	-211.94	419.54	-267.77	0.00	
5320.00†	8.261	327.452	5283.74	-218.06	431.65	-275.50	0.00	
5420.00†	8.261	327.452	5382.70	-224.18	443.76	-283.23	0.00	
5520.00†	8.261	327.452	5481.66	-230.30	455.87	-290.96	0.00	
5620.00†	8.261	327.452	5580.62	-236.42	467.99	-298.69	0.00	



Planned Wellpath Report

WESTWIND 7 PWP (REV-B.0)

Page 4 of 8



REFERENCE WELLPATH IDENTIFICATION

Operator	EXTRACTION OIL & GAS	Slot	SLOT#07 WESTWIND 7 (971'FSL & 252'FWL,SEC.07)
Area	COLORADO	Well	WESTWIND 7
Field	WELD COUNTY (NAD83/TRUE NORTH)	Wellbore	WESTWIND 7 PWB
Facility	SEC.07-T06N-R67W		

WELLPATH DATA (128 stations) † = interpolated/extrapolated station

MD [ft]	Inclination [°]	Azimuth [°]	TVD [ft]	Vert Sect [ft]	North [ft]	East [ft]	DLS [°/100ft]	Comments
5720.00†	8.261	327.452	5679.59	-242.54	480.10	-306.42	0.00	
5820.00†	8.261	327.452	5778.55	-248.66	492.21	-314.15	0.00	
5920.00†	8.261	327.452	5877.51	-254.78	504.32	-321.88	0.00	
6020.00†	8.261	327.452	5976.47	-260.90	516.43	-329.61	0.00	
6120.00†	8.261	327.452	6075.43	-267.01	528.54	-337.34	0.00	
6220.00†	8.261	327.452	6174.40	-273.13	540.66	-345.07	0.00	
6320.00†	8.261	327.452	6273.36	-279.25	552.77	-352.80	0.00	
6420.00†	8.261	327.452	6372.32	-285.37	564.88	-360.53	0.00	
6495.63	8.261	327.452	6447.17	-290.00	574.04	-366.38	0.00	End of Tangent
6520.00†	7.252	343.975	6471.32	-290.98	577.00	-367.75	10.00	
6620.00†	10.586	49.274	6570.32	-284.24	589.09	-362.52	10.00	
6720.00†	19.250	69.629	6666.92	-260.45	600.85	-340.04	10.00	
6820.00†	28.775	77.258	6758.18	-220.33	611.92	-301.02	10.00	
6920.00†	38.528	81.287	6841.33	-165.09	621.97	-246.62	10.00	
7020.00†	48.369	83.880	6913.85	-96.41	630.70	-178.50	10.00	
7120.00†	58.253	85.780	6973.52	-16.39	637.83	-98.73	10.00	
7220.00†	68.160	87.309	7018.55	72.55	643.15	-9.74	10.00	
7320.00†	78.079	88.638	7047.55	167.70	646.50	85.77	10.00	
7420.00†	88.004	89.873	7059.65	266.18	647.78	184.90	10.00	
7440.11	90.000	90.117	7060.00 [†]	286.12	647.78	205.00	10.00	End of 3D Arc
7520.00†	90.000	90.117	7060.00	365.34	647.62	284.89	0.00	
7620.00†	90.000	90.117	7060.00	464.49	647.41	384.89	0.00	
7720.00†	90.000	90.117	7060.00	563.64	647.21	484.89	0.00	
7820.00†	90.000	90.117	7060.00	662.80	647.00	584.89	0.00	
7920.00†	90.000	90.117	7060.00	761.95	646.80	684.89	0.00	
8020.00†	90.000	90.117	7060.00	861.10	646.59	784.89	0.00	
8120.00†	90.000	90.117	7060.00	960.26	646.39	884.89	0.00	
8220.00†	90.000	90.117	7060.00	1059.41	646.18	984.89	0.00	
8320.00†	90.000	90.117	7060.00	1158.56	645.98	1084.89	0.00	
8420.00†	90.000	90.117	7060.00	1257.72	645.78	1184.89	0.00	



Planned Wellpath Report

WESTWIND 7 PWP (REV-B.0)
Page 5 of 8



REFERENCE WELLPATH IDENTIFICATION

Operator	EXTRACTION OIL & GAS	Slot	SLOT#07 WESTWIND 7 (971'FSL & 252'FWL,SEC.07)
Area	COLORADO	Well	WESTWIND 7
Field	WELD COUNTY (NAD83/TRUE NORTH)	Wellbore	WESTWIND 7 PWB
Facility	SEC.07-T06N-R67W		

WELLPATH DATA (128 stations) † = interpolated/extrapolated station

MD [ft]	Inclination [°]	Azimuth [°]	TVD [ft]	Vert Sect [ft]	North [ft]	East [ft]	DLS [°/100ft]	Comments
8520.00†	90.000	90.117	7060.00	1356.87	645.57	1284.89	0.00	
8620.00†	90.000	90.117	7060.00	1456.02	645.37	1384.89	0.00	
8720.00†	90.000	90.117	7060.00	1555.18	645.16	1484.89	0.00	
8820.00†	90.000	90.117	7060.00	1654.33	644.96	1584.89	0.00	
8920.00†	90.000	90.117	7060.00	1753.48	644.75	1684.89	0.00	
9020.00†	90.000	90.117	7060.00	1852.64	644.55	1784.89	0.00	
9120.00†	90.000	90.117	7060.00	1951.79	644.34	1884.89	0.00	
9220.00†	90.000	90.117	7060.00	2050.94	644.14	1984.89	0.00	
9320.00†	90.000	90.117	7060.00	2150.10	643.93	2084.89	0.00	
9420.00†	90.000	90.117	7060.00	2249.25	643.73	2184.89	0.00	
9520.00†	90.000	90.117	7060.00	2348.40	643.53	2284.89	0.00	
9620.00†	90.000	90.117	7060.00	2447.56	643.32	2384.89	0.00	
9720.00†	90.000	90.117	7060.00	2546.71	643.12	2484.89	0.00	
9820.00†	90.000	90.117	7060.00	2645.86	642.91	2584.89	0.00	
9920.00†	90.000	90.117	7060.00	2745.02	642.71	2684.89	0.00	
10020.00†	90.000	90.117	7060.00	2844.17	642.50	2784.89	0.00	
10120.00†	90.000	90.117	7060.00	2943.32	642.30	2884.89	0.00	
10220.00†	90.000	90.117	7060.00	3042.48	642.09	2984.89	0.00	
10320.00†	90.000	90.117	7060.00	3141.63	641.89	3084.89	0.00	
10420.00†	90.000	90.117	7060.00	3240.78	641.69	3184.89	0.00	
10520.00†	90.000	90.117	7060.00	3339.94	641.48	3284.89	0.00	
10620.00†	90.000	90.117	7060.00	3439.09	641.28	3384.89	0.00	
10720.00†	90.000	90.117	7060.00	3538.24	641.07	3484.89	0.00	
10820.00†	90.000	90.117	7060.00	3637.40	640.87	3584.88	0.00	
10920.00†	90.000	90.117	7060.00	3736.55	640.66	3684.88	0.00	
11020.00†	90.000	90.117	7060.00	3835.70	640.46	3784.88	0.00	
11120.00†	90.000	90.117	7060.00	3934.86	640.25	3884.88	0.00	
11220.00†	90.000	90.117	7060.00	4034.01	640.05	3984.88	0.00	
11320.00†	90.000	90.117	7060.00	4133.16	639.84	4084.88	0.00	
11420.00†	90.000	90.117	7060.00	4232.32	639.64	4184.88	0.00	



Planned Wellpath Report

WESTWIND 7 PWP (REV-B.0)
Page 6 of 8



REFERENCE WELLPATH IDENTIFICATION

Operator	EXTRACTION OIL & GAS	Slot	SLOT#07 WESTWIND 7 (971'FSL & 252'FWL,SEC.07)
Area	COLORADO	Well	WESTWIND 7
Field	WELD COUNTY (NAD83/TRUE NORTH)	Wellbore	WESTWIND 7 PWB
Facility	SEC.07-T06N-R67W		

WELLPATH DATA (128 stations) † = interpolated/extrapolated station

MD [ft]	Inclination [°]	Azimuth [°]	TVD [ft]	Vert Sect [ft]	North [ft]	East [ft]	DLS [°/100ft]	Comments
11520.00†	90.000	90.117	7060.00	4331.47	639.44	4284.88	0.00	
11620.00†	90.000	90.117	7060.00	4430.62	639.23	4384.88	0.00	
11720.00†	90.000	90.117	7060.00	4529.78	639.03	4484.88	0.00	
11820.00†	90.000	90.117	7060.00	4628.93	638.82	4584.88	0.00	
11920.00†	90.000	90.117	7060.00	4728.08	638.62	4684.88	0.00	
12020.00†	90.000	90.117	7060.00	4827.24	638.41	4784.88	0.00	
12120.00†	90.000	90.117	7060.00	4926.39	638.21	4884.88	0.00	
12185.91	90.000	90.117	7060.00 ²	4991.74	638.07	4950.79	0.00	End of Tangent

HOLE & CASING SECTIONS - Ref Wellbore: WESTWIND 7 PWB Ref Wellpath: WESTWIND 7 PWP (REV-B.0)

String/Diameter	Start MD [ft]	End MD [ft]	Interval [ft]	Start TVD [ft]	End TVD [ft]	Start N/S [ft]	Start E/W [ft]	End N/S [ft]	End E/W [ft]
7.875in Open Hole	1500.00	12185.90	10685.90	1500.00	7060.00	0.00	0.00	638.07	4950.78
9.625in Casing Surface	20.00	1500.00	1480.00	20.00	1500.00	0.00	0.00	0.00	0.00



Planned Wellpath Report

WESTWIND 7 PWP (REV-B.0)

Page 7 of 8



REFERENCE WELLPATH IDENTIFICATION

Operator	EXTRACTION OIL & GAS	Slot	SLOT#07 WESTWIND 7 (971'FSL & 252'FWL,SEC.07)
Area	COLORADO	Well	WESTWIND 7
Field	WELD COUNTY (NAD83/TRUE NORTH)	Wellbore	WESTWIND 7 PWB
Facility	SEC.07-T06N-R67W		

TARGETS

Name	MD [ft]	TVD [ft]	North [ft]	East [ft]	Grid East [US ft]	Grid North [US ft]	Latitude	Longitude	Shape
SEC.07-T06N-R67W		-4.00	150.12	-2.47	3154839.47	1424332.30	40°29'48.692"N	104°56'35.682"W	polygon
SEC.08-T06N-R67W		-4.00	150.12	-2.47	3154839.47	1424332.30	40°29'48.692"N	104°56'35.682"W	polygon
SEC.07-T06N-R67W (460'SETBACK)		7060.00	150.08	-2.47	3154839.47	1424332.26	40°29'48.692"N	104°56'35.682"W	polygon
2) WESTWIND 7 BHL ON PLAT REV-1(1546'FSL & 310'FWL,SEC.08)	12185.91	7060.00	638.07	4950.79	3159789.39	1424851.33	40°29'53.509"N	104°55'31.566"W	point
1) WESTWIND 7 LANDING	7440.11	7060.00	647.78	205.00	3155043.81	1424831.24	40°29'53.610"N	104°56'32.996"W	point

SURVEY PROGRAM - Ref Wellbore: WESTWIND 7 PWB Ref Wellpath: WESTWIND 7 PWP (REV-B.0)

Start MD [ft]	End MD [ft]	Positional Uncertainty Model	Log Name/Comment	Wellbore
20.00	12185.91	NaviTrak (Standard)		WESTWIND 7 PWB



Planned Wellpath Report

WESTWIND 7 PWP (REV-B.0)
Page 8 of 8



REFERENCE WELLPATH IDENTIFICATION			
Operator	EXTRACTION OIL & GAS	Slot	SLOT#07 WESTWIND 7 (971'FSL & 252'FWL,SEC.07)
Area	COLORADO	Well	WESTWIND 7
Field	WELD COUNTY (NAD83/TRUE NORTH)	Wellbore	WESTWIND 7 PWB
Facility	SEC.07-T06N-R67W		

DESIGN COMMENTS				
MD [ft]	Inclination [°]	Azimuth [°]	TVD [ft]	Comment
20.00	0.000	327.452	20.00	Tie On
1550.00	0.000	327.452	1550.00	End of Tangent
1963.06	8.261	327.452	1961.63	End of Build
6495.63	8.261	327.452	6447.17	End of Tangent
7440.11	90.000	90.117	7060.00	End of 3D Arc
12185.91	90.000	90.117	7060.00	End of Tangent