



July 21st, 2015

Mr. Matt Lepore, Director
Colorado Oil and Gas Conservation Commission
The Chancery Building
1120 Lincoln Street, Suite 801
Denver, CO 80203

RE: Anschutz State 5-62-22-0108C2B (Document #400843980)
Township 5 North, Range 62 West, 6th P.M.
Section 22: NWNW (surface location)
Weld County, Colorado

Proposed Wellbore Unit (640 acres):

Township 5 North, Range 62 West, 6th P.M.
Section 22- N2N2
Section 23- N2N2
Section 14- S2S2
Section 15- S2S2

Dear Mr. Lepore:

Bill Barrett Corporation ("BBC") is planning to drill the captioned boundary well in accordance with the provisions of COGCC 318A.e.

BBC's wellbore spacing unit consists of Section 22-N2N2, Section 23-N2N2, Section 14-S2S2, Section 15-S2S2 of T5N-62W, creating the above referenced spacing unit in which we will target the Niobrara formation. I certify that all of the owners within the proposed wellbore spacing unit were noticed and no objections were received.

Enclosed is a copy of the following document to assist you in your review and approval of BBC's proposed changes for the captioned well.

- Plat illustrating the proposed wellbore spacing unit on existing location plat

Thank you for your attention to the enclosed. BBC respectfully requests that the COGCC review the enclosed information and approve the proposed changes for the captioned well.

Sincerely,

A handwritten signature in blue ink, appearing to read 'Mary Pobuda', written over a horizontal line.

Mary Pobuda
Permit Analyst

1099 18th Street, Suite 2300
Denver, CO 80202
P 303.293.9100
F 303.291.0420

T5N, R62W, 6th P.M.

BILL BARRETT CORPORATION

ANSCHUTZ STATE 5-62-22 23 NWNW PAD

#5-62-22-0108C2B

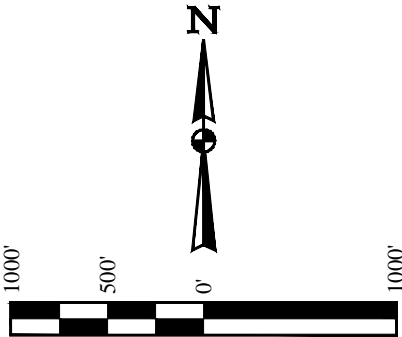
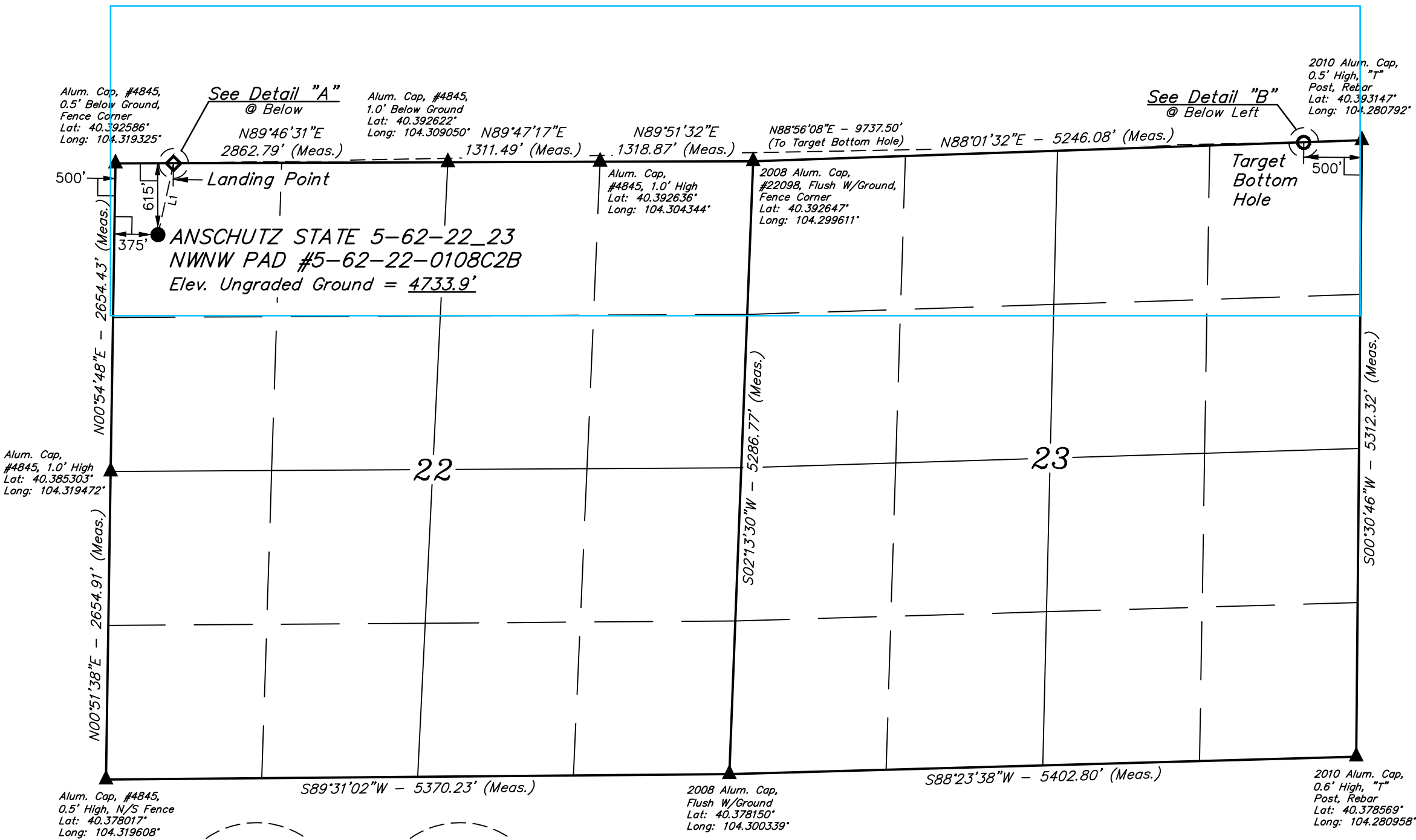
NW 1/4 NW 1/4, SECTION 22, T5N, R62W, 6th P.M.
WELD COUNTY, COLORADO

BASIS OF BEARINGS

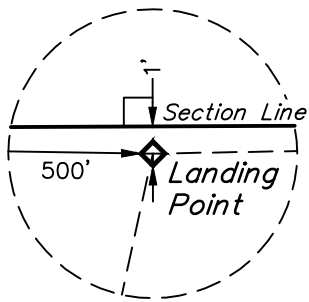
BASIS OF BEARINGS IS A G.P.S. OBSERVATION

BASIS OF ELEVATION

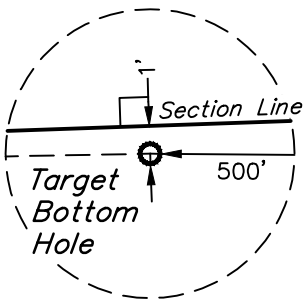
SPOT ELEVATION LOCATED AT THE NORTHEAST CORNER OF SECTION 24, T5N, R62W, 6th P.M. TAKEN FROM THE POINT OF ROCKS, QUADRANGLE, COLORADO, WELD COUNTY, 7.5 MINUTE QUAD (TOPOGRAPHIC MAP) PUBLISHED BY THE UNITED STATES DEPARTMENT OF THE INTERIOR, GEOLOGICAL SURVEY. SAID ELEVATION IS MARKED AS BEING 4530 FEET.



LINE TABLE		
LINE	DIRECTION	LENGTH
L1	N12°22'30"E	629.10'



Detail "A"
No Scale



Detail "B"
No Scale

LEGEND:

- 90° SYMBOL
- PROPOSED WELLHEAD.
- LANDING POINT.
- TARGET BOTTOM HOLE.
- SECTION CORNERS LOCATED.

NAD 83 (TARGET BOTTOM HOLE)	NAD 83 (LANDING POINT)	NAD 83 (SURFACE LOCATION)
LATITUDE = 40°23'35.15" (40.393097)	LATITUDE = 40°23'33.32" (40.392589)	LATITUDE = 40°23'27.25" (40.390903)
LONGITUDE = 104°16'57.32" (104.282589)	LONGITUDE = 104°19'03.11" (104.317531)	LONGITUDE = 104°19'04.85" (104.318014)
NAD 27 (TARGET BOTTOM HOLE)	NAD 27 (LANDING POINT)	NAD 27 (SURFACE LOCATION)
LATITUDE = 40°23'35.21" (40.393114)	LATITUDE = 40°23'33.39" (40.392608)	LATITUDE = 40°23'27.31" (40.390919)
LONGITUDE = 104°16'55.49" (104.282081)	LONGITUDE = 104°19'01.29" (104.317025)	LONGITUDE = 104°19'03.02" (104.317506)
STATE PLANE NAD 83 (COLORADO NORTH)	STATE PLANE NAD 83 (COLORADO NORTH)	STATE PLANE NAD 83 (COLORADO NORTH)
N: 1388373.31 E: 3339085.80	N: 1388056.57 E: 3329355.98	N: 1387440.43 E: 3329229.79
STATE PLANE NAD 27 (COLORADO NORTH)	STATE PLANE NAD 27 (COLORADO NORTH)	STATE PLANE NAD 27 (COLORADO NORTH)
N: 388374.95 E: 2339235.77	N: 388058.23 E: 2329505.93	N: 387442.10 E: 2329379.74

PDOP = 1.5

CERTIFICATE

THIS IS TO CERTIFY THAT THE ABOVE PLAT WAS PREPARED FROM FIELD NOTES OF ACTUAL SURVEYS MADE BY ME OR UNDER MY SUPERVISION, AND THAT THE SAME ARE TRUE AND CORRECT TO THE BEST OF MY KNOWLEDGE AND BELIEF.

REGISTERED LAND SURVEYOR
REGISTRATION NO. 28285
STATE OF COLORADO

03-01-15



UELS, LLC
Corporate Office * 85 South 200 East
Vernal, UT 84078 * (435) 789-1017

SURVEYED BY: JARED CHRISTOPHER, D.W.	DATE: 03-19-15
DRAWN BY: J.S.	DATE DRAWN: 03-26-15
SCALE: 1" = 1000'	REVISED: 00-00-00

WELL LOCATION PLAT