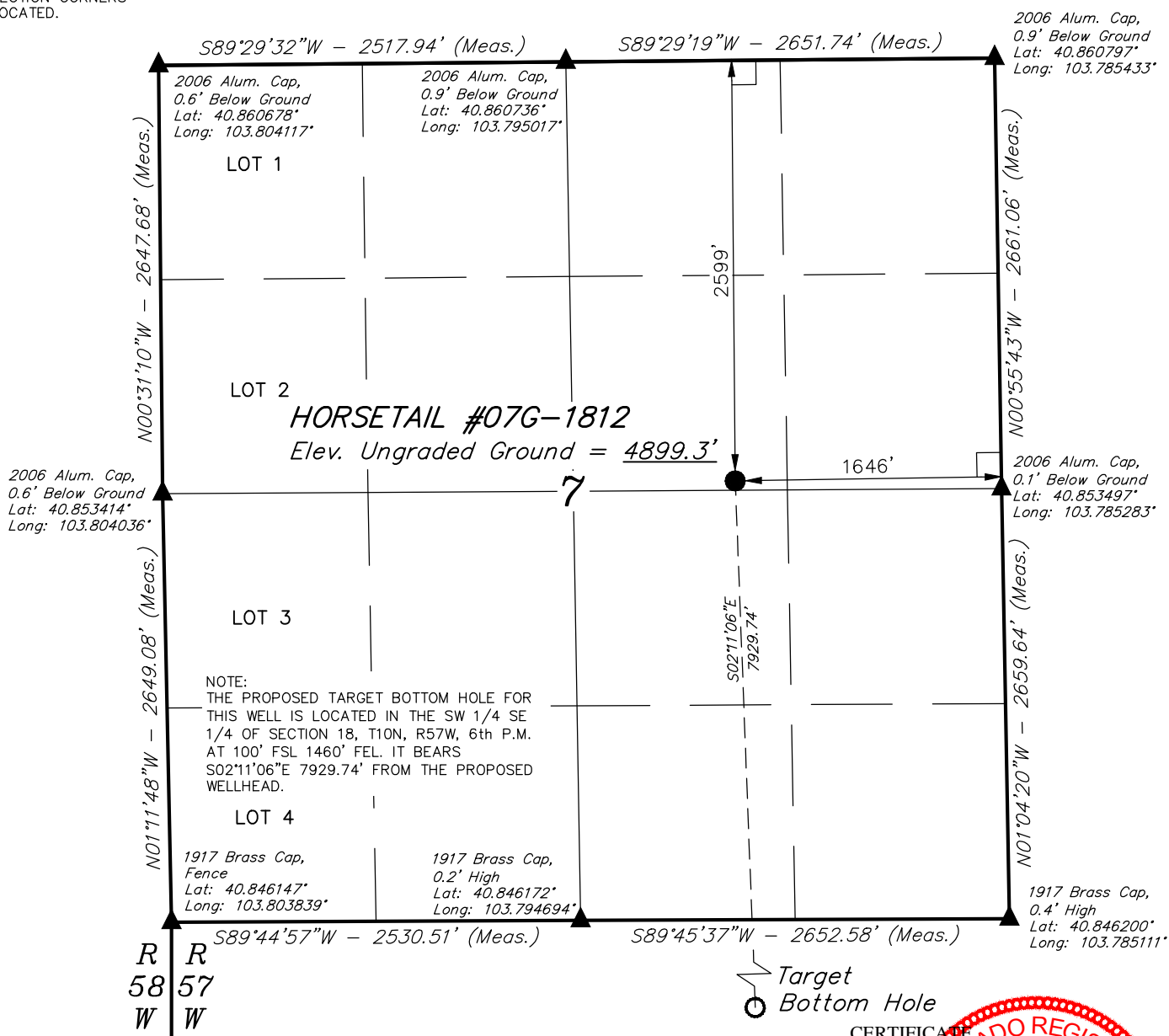


LEGEND:

- = 90° SYMBOL
- = PROPOSED WELLHEAD.
- = TARGET BOTTOM HOLE.
- = SECTION CORNERS LOCATED.

T10N, R57W, 6th P.M.

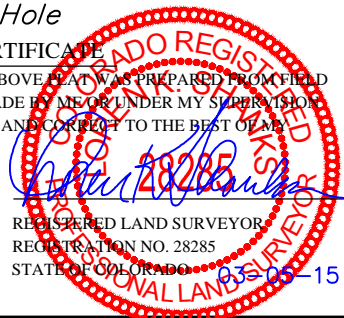


PDOP = 1.3

NAD 83 (SURFACE LOCATION)	
LATITUDE = 40°51'13.06" (40.853628)	
LONGITUDE = 103°47'28.44" (103.791233)	
NAD 27 (SURFACE LOCATION)	
LATITUDE = 40°51'13.11" (40.853642)	
LONGITUDE = 103°47'26.64" (103.790733)	



THIS IS TO CERTIFY THAT THE ABOVE PLAT WAS PREPARED FROM FIELD NOTES OF ACTUAL SURVEYS MADE BY ME OR UNDER MY SUPERVISION AND THAT THE SAME ARE TRUE AND CORRECT TO THE BEST OF MY KNOWLEDGE AND BELIEF.



BASIS OF BEARINGS
BASIS OF BEARINGS IS A G.P.S. OBSERVATION
BASIS OF ELEVATION

SPOT ELEVATION LOCATED AT THE NORTHEAST CORNER OF SECTION 15, T9N, R58W, 6th P.M. TAKEN FROM THE GATEHOOK SPRING, QUADRANGLE, COLORADO, WELD COUNTY, 7.5 MINUTE QUAD (TOPOGRAPHIC MAP) PUBLISHED BY THE UNITED STATES DEPARTMENT OF THE INTERIOR, GEOLOGICAL SURVEY. SAID ELEVATION IS MARKED AS BEING 4679 FEET.

WHITING OIL & GAS CORP.

HORSETAIL #07G-1812 (SURFACE LOCATION)
SW 1/4 NE 1/4, SECTION 7, T10N, R57W, 6th P.M.
WELD COUNTY, COLORADO

SURVEYED BY: DALLAS NIELSEN, D.W.	DATE: 02-27-15
DRAWN BY: K.B.	DATE DRAWN: 08-11-14
SCALE: 1" = 1000'	REVISED: 02-28-15

WELL LOCATION PLAT



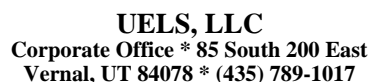
UELS, LLC
Corporate Office * 85 South 200 East
Vernal, UT 84078 * (435) 789-1017



T10N, R57W, 6th P.M.

- Surface Location ●

S89°44'57"W - 2530.51' (Meas.)
 1917 Brass Cap,
 Fence
 Lat: 40.846147°
 Long: 103.803839°
 LOT 1
 NOTE:
 THE PROPOSED TARGET BOTTOM HOLE
 BEARS S02°11'06"E 7929.74' FROM THE
 PROPOSED WELLHEAD WHICH IS LOCATED IN
 THE SW 1/4 NE 1/4 OF SECTION 7, T10N,
 R57W, 6th P.M. AT 2599' FNL 1646' FEL.
 LOT 2
 S02°11'06"E
 7929.74'
 18
 2012 Alum. Cap,
 #28285, 0.1' High
 Lat: 40.838878°
 Long: 103.803747°
 LOT 3
 2011 Alum. Cap.
 0.4' Below Ground
 Lat: 40.838908°
 Long: 103.784997°
 LOT 4
 HORSETAIL #07G-1812
 Target Bottom Hole
 1460'
 100'
 S89°56'55"W - 2539.76' (Meas.)
 2011 Alum. Cap,
 #17492,
 Flush W/Ground
 Lat: 40.831606°
 Long: 103.794478°
 S89°55'14"W
 2657.22' (Meas.)
 1917 Brass Cap,
 0.5' Above Ground
 Lat: 40.831611°
 Long: 103.784878°
 N00°34'46"W - 2648.97' (Meas.)
 N00°34'39"W - 2650.92' (Meas.)
 N00°42'39"W - 2657.16' (Meas.)
 N00°44'35"W - 2659.11' (Meas.)
 R58 W57 W



SURVEYED BY: DALLAS NIELSEN, D.W.	DATE: 02-27-15
DRAWN BY: K.B.	DATE DRAWN: 08-11-14
SCALE: 1" = 1000'	REVISED: 02-28-15

WELL LOCATION PLAT