

PCGK - Pressure Case Gamma

[illegible]

WELL INFORMATION

MWD Run Number	100	200			
Date run completed	15-Feb-15	16-Feb-15			
Rig Bit Number	2	3			
Bit Size (in)	8.750	8.750			
Tool Nominal OD (in)	6.870	6.870			
Log Start Depth (TVD, ft)	841.94	6,539.53			
Log End Depth (TVD, ft)	6,539.53	6,924.28			
Drill or Wipe	Drill	Drill			
Drill/Wipe Start Date and Time	14-Feb-15 20:29	16-Feb-15 03:30			
Drill/Wipe End Date and Time	15-Feb-15 20:18	16-Feb-15 16:17			
Min Inc (deg) @ Depth (TVD, ft)	0.06 @ 5,683.00	14.86 @ 6,531.81			
Max Inc (deg) @ Depth (TVD, ft)	13.34 @ 2,473.44	88.98 @ 6,924.28			
Bit TFA(in2) / Bit Type	1.37 / PDC	1.84 / PDC			
Flow Rate (gpm)	592.84	583.37			
Max AV (fpm) / CV (fpm) @ MWD	N/A / N/A	N/A / N/A			
Fluid Type	Native/Spud Mud	Native/Spud Mud			
Density (ppg) / Viscosity (spqt)	9.20 / 33.00	10.80 / 37.00			
Filtrate CL (ppm)	1,900.00	2,000.00			
pH / Fluid Loss (mptm)	9.50 / 9	9.20 / 9			
PV (cP) / YP (lbf2)	5 / 3.00	9 / 10.00			
% Solids / % Sand	5.30 / 0.20	11.70 / 0.20			
% Oil / Oil:Water Ratio	N/A / N/A	N/A / N/A			
Rm @ Measured Temp (degF)	N/A @ N/A	N/A @ N/A			
Rmf @ Measured Temp (degF)	N/A @ N/A	N/A @ N/A			
Rmc @ Measured Temp (degF)	N/A @ N/A	N/A @ N/A			
Max Tool Temp (in) @ 150	150.10 / 150.10	150.10 / 150.10			

Max Tool Temp (degF) / Source	150.10 / PCM	150.10 / PCM			
Rm @ Max Tool Temp (degF)	N/A @ 150.10	N/A @ 150.10			
Lead MWD Engineer	Robert Barnes	Robert Barnes			
Customer Representative	Jeremy Stolz	Jeremy Stolz			

SENSOR INFORMATION

Downhole Processor Information

Tool Type	PCM	PCM			
Software Version	5.93	5.93			
Sub Serial Number	11404302	11404302			
Insert Serial Number	11680766	11680766			
Date and Time Initialized	14-Feb-15 11:47	01-Jan-70 00:00			
Date and Time Read	16-Feb-15 20:59	16-Feb-15 21:05			
ECMB SW Version	N/A	N/A			

Directional Sensor Information

Tool Type	PCDC	PCDC			
Distance From Bit (ft)	54.00	55.00			
Software Version	6.33	6.33			
Sub Serial Number	11404302	11404302			
Sonde Serial Number	11145674	11145674			
Sensor ID Number	N/A	N/A			
Toolface Offset (deg)	120.18	292.47			

Gamma Ray Sensor Information

Tool Type	PCG	PCG			
Distance From Bit (ft)	47.39	47.57			
Recorded Sample Period (sec)	10	10			
Software Version	8.15	8.15			
Sub Serial Number	11404302	11404302			
Insert/Sonde Serial Number	11293410	11293410			

REMARKS

1. All depths are calibrated to driller's pipe tally and are true vertical depth from the Drill Floor.
2. No depth corrections have been made for pipe stretch or compression.
3. Critical annular velocities are calculated using the "Power Law" model for water based fluids and the "Brigham Plastic" model for oil and synthetic based fluids.
4. All data presented is recorded data unless otherwise specified.
5. The following smoothing parameters have been applied to the data:
 - 1:600 Log
PGRC (Gamma CG) and ROPA (Average Rate of Penetration)
Interval Resolution: 1.0 ft
Interval Distance: 3.0 ft
 - 1:240 Log
PGRC (Gamma CG):
Interval Resolution: 0.5 ft
Interval Distance: 0.6 ft
 - ROPA (Average Rate Of Penetration):
Interval Resolution: 0.5 ft

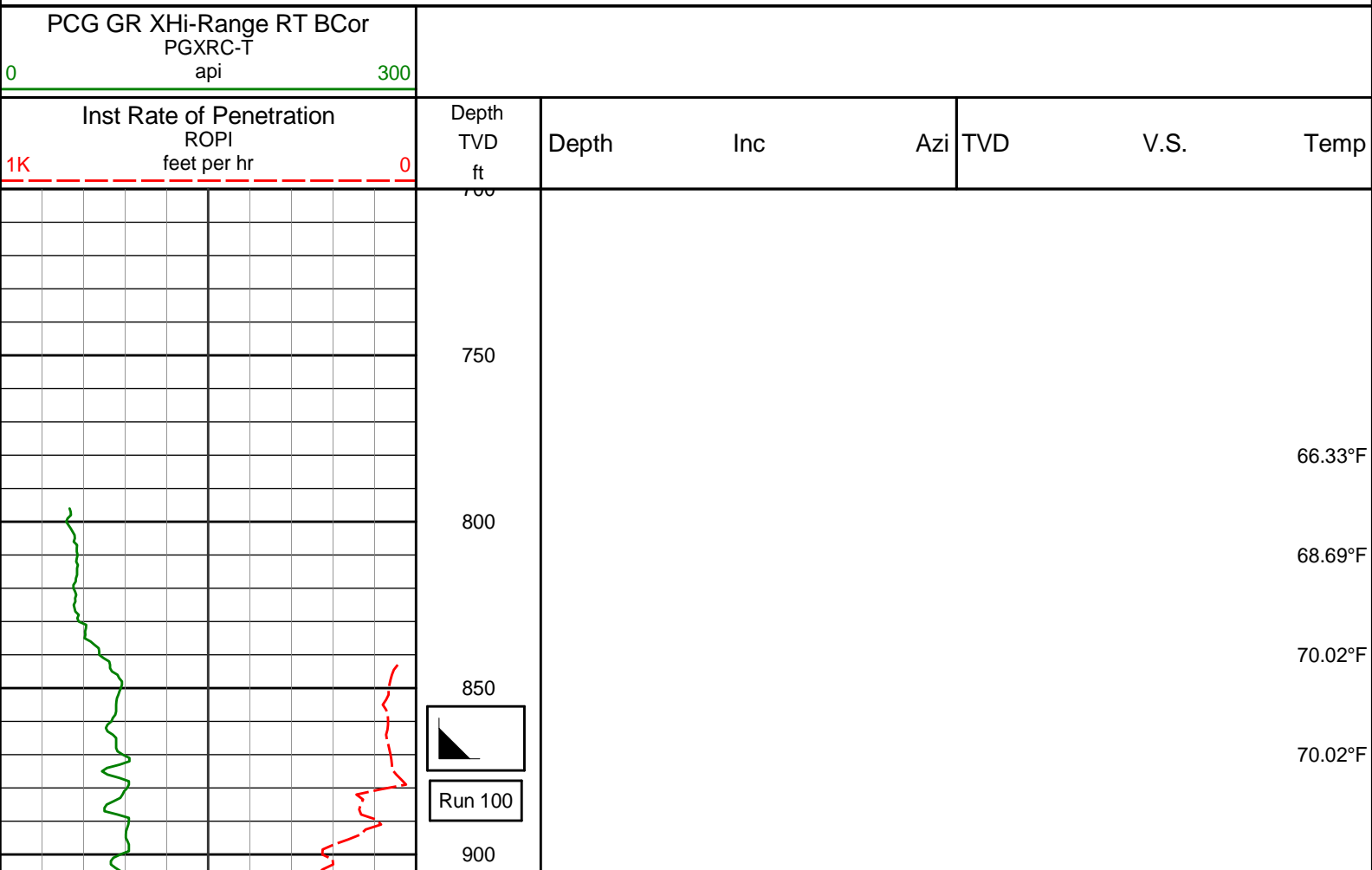
Interval Resolution: 0.5 ft
Interval Distance: 1.2 ft

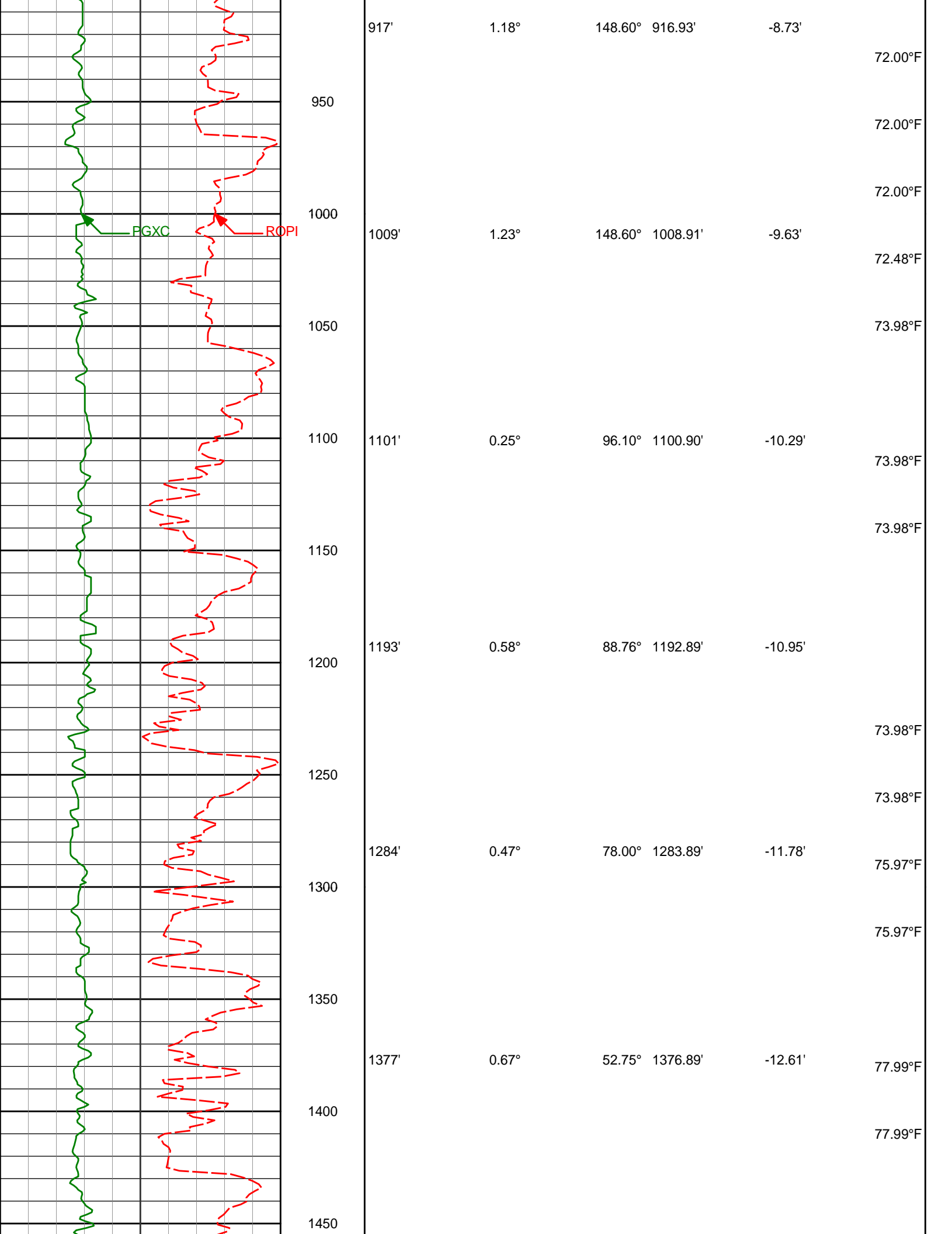
6. Insite Version v8.1.10

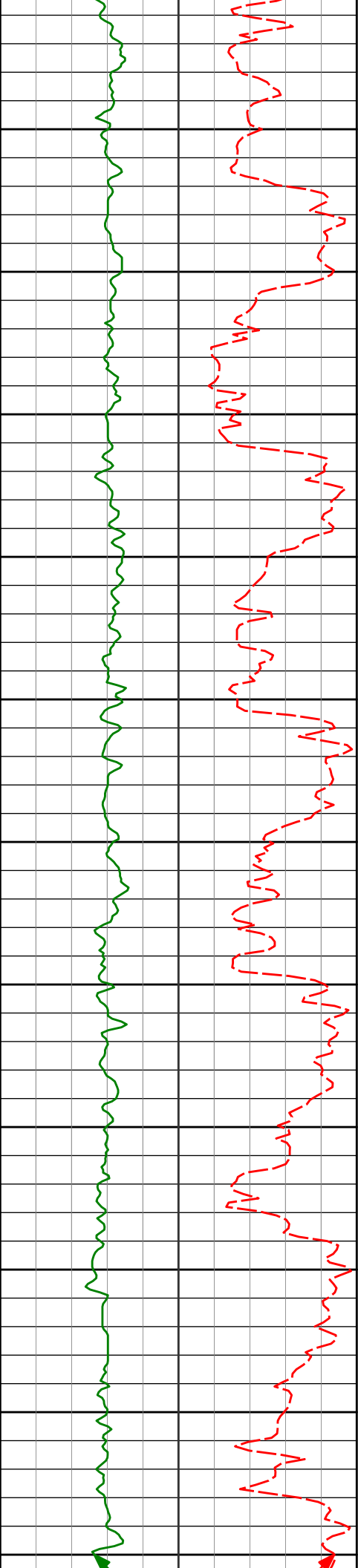
WARRANTY

HALLIBURTON WILL USE ITS BEST EFFORTS TO FURNISH CUSTOMERS WITH ACCURATE INFORMATION AND INTERPRETATIONS THAT ARE PART OF, AND INCIDENT TO, THE SERVICES PROVIDED. HOWEVER, HALLIBURTON CANNOT AND DOES NOT WARRANT THE ACCURACY OR CORRECTNESS OF SUCH INFORMATION AND INTERPRETATIONS. UNDER NO CIRCUMSTANCES SHOULD ANY SUCH INFORMATION OR INTERPRETATION BE RELIED UPON AS THE SOLE BASIS FOR ANY DRILLING, COMPLETION, PRODUCTION, OR FINANCIAL DECISION OR ANY PROCEDURE INVOLVING ANY RISK TO THE SAFETY OF ANY DRILLING VENTURE, DRILLING RIG OR ITS CREW OR ANY OTHER THIRD PARTY. THE CUSTOMER HAS FULL RESPONSIBILITY FOR ALL DRILLING, COMPLETION AND PRODUCTION OPERATION. HALLIBURTON MAKES NO REPRESENTATIONS OR WARRANTIES, EITHER EXPRESSED OR IMPLIED, INCLUDING, BUT NOT LIMITED TO, THE IMPLIED WARRANTIES OF MERCHANTABILITY OR FITNESS FOR A PARTICULAR PURPOSE, WITH RESPECT TO THE SERVICES RENDERED. IN NO EVENT WILL HALLIBURTON BE LIABLE FOR FAILURE TO OBTAIN ANY PARTICULAR RESULTS OR FOR ANY DAMAGES, INCLUDING, BUT NOT LIMITED TO, INDIRECT, SPECIAL OR CONSEQUENTIAL DAMAGES, RESULTING FROM THE USE OF ANY INFORMATION OR INTERPRETATION PROVIDED BY HALLIBURTON.

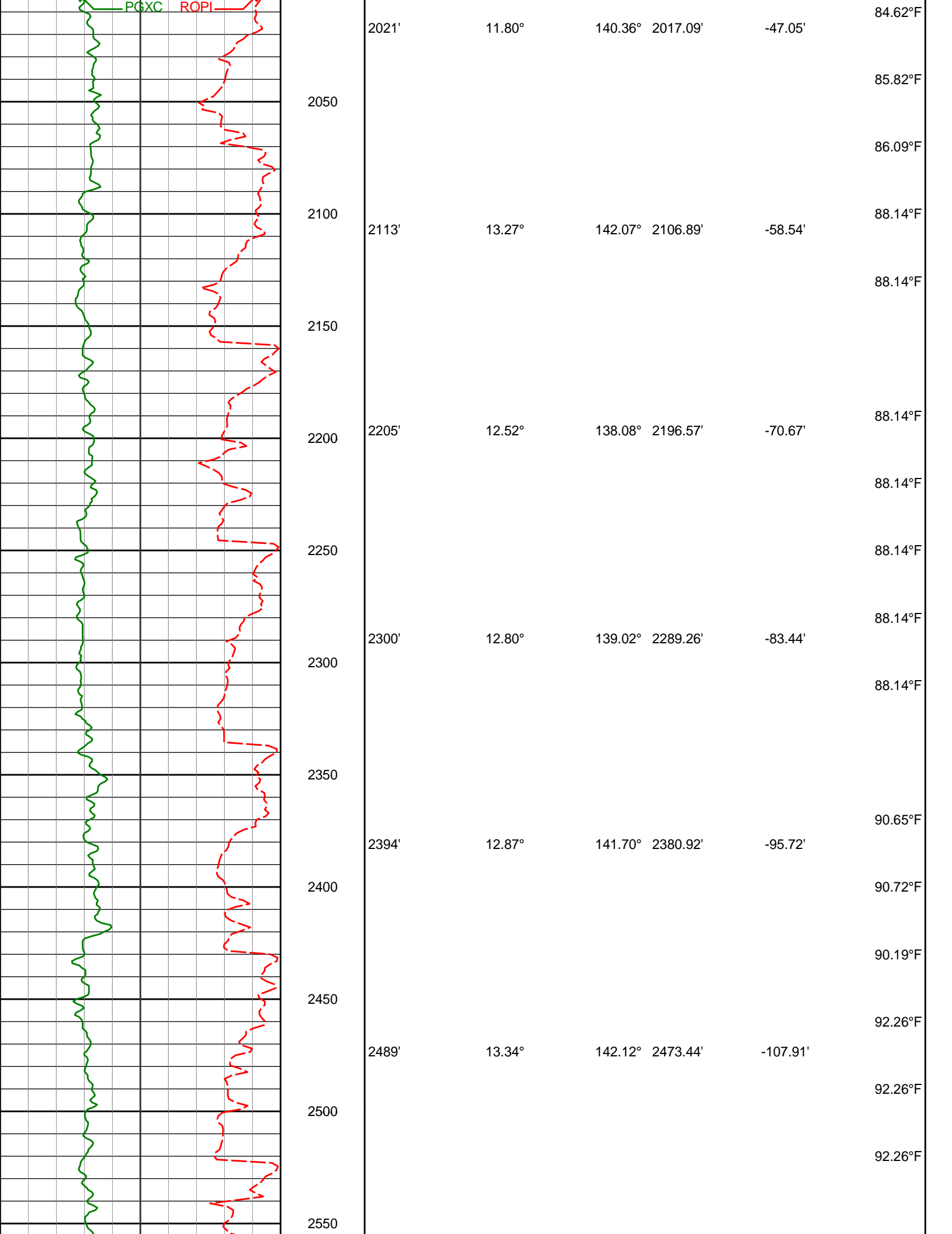
TVD Detail 1:600 Scale

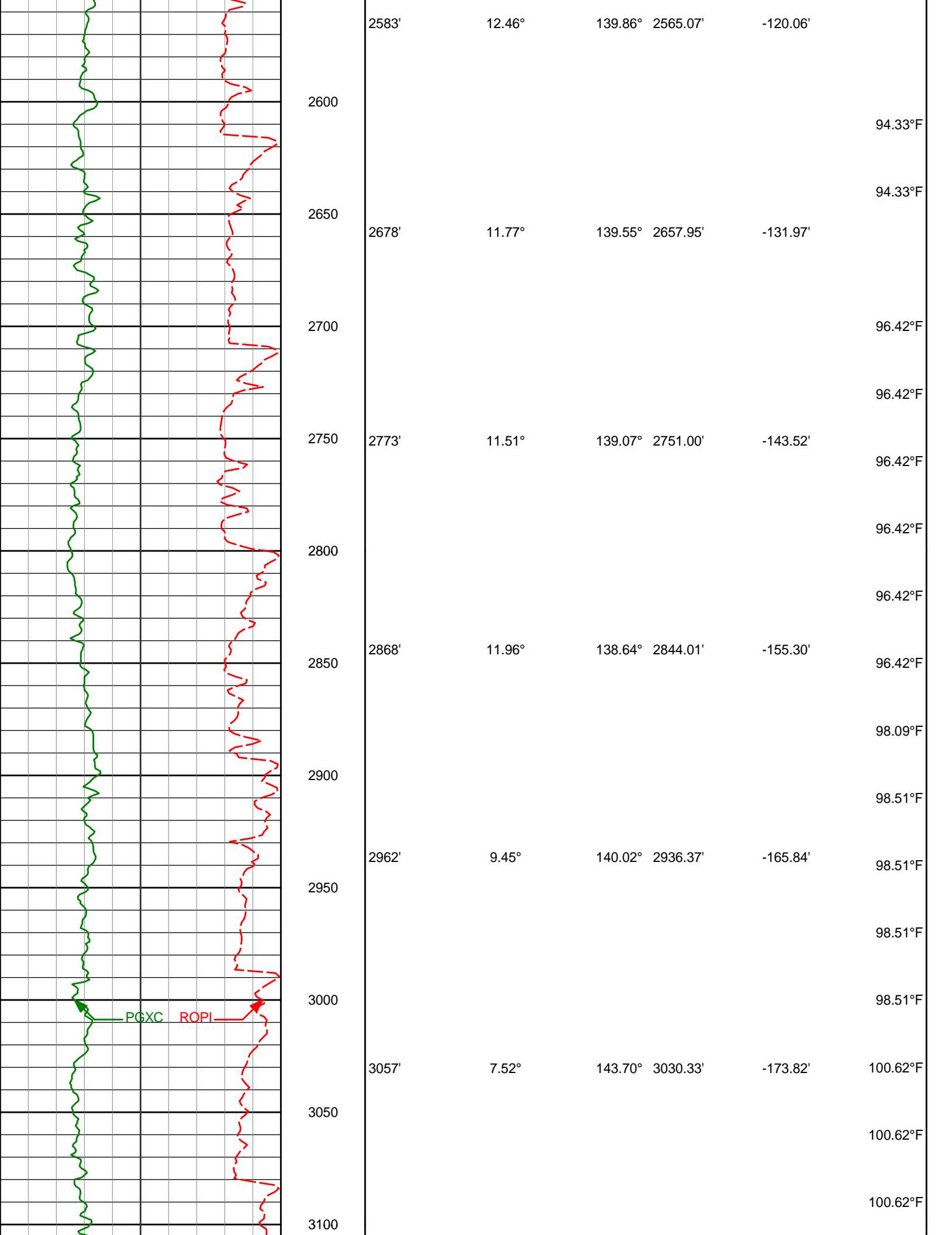


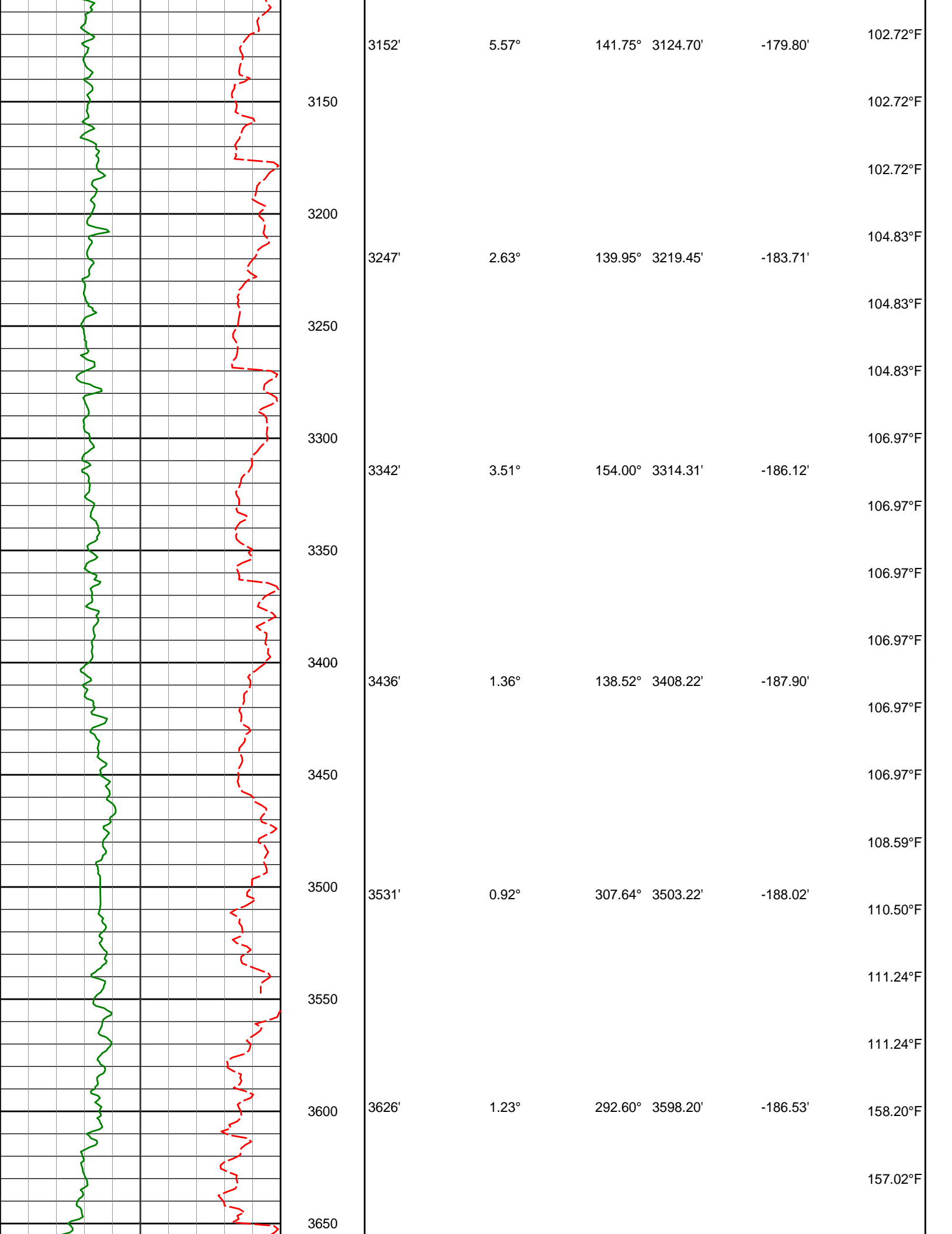


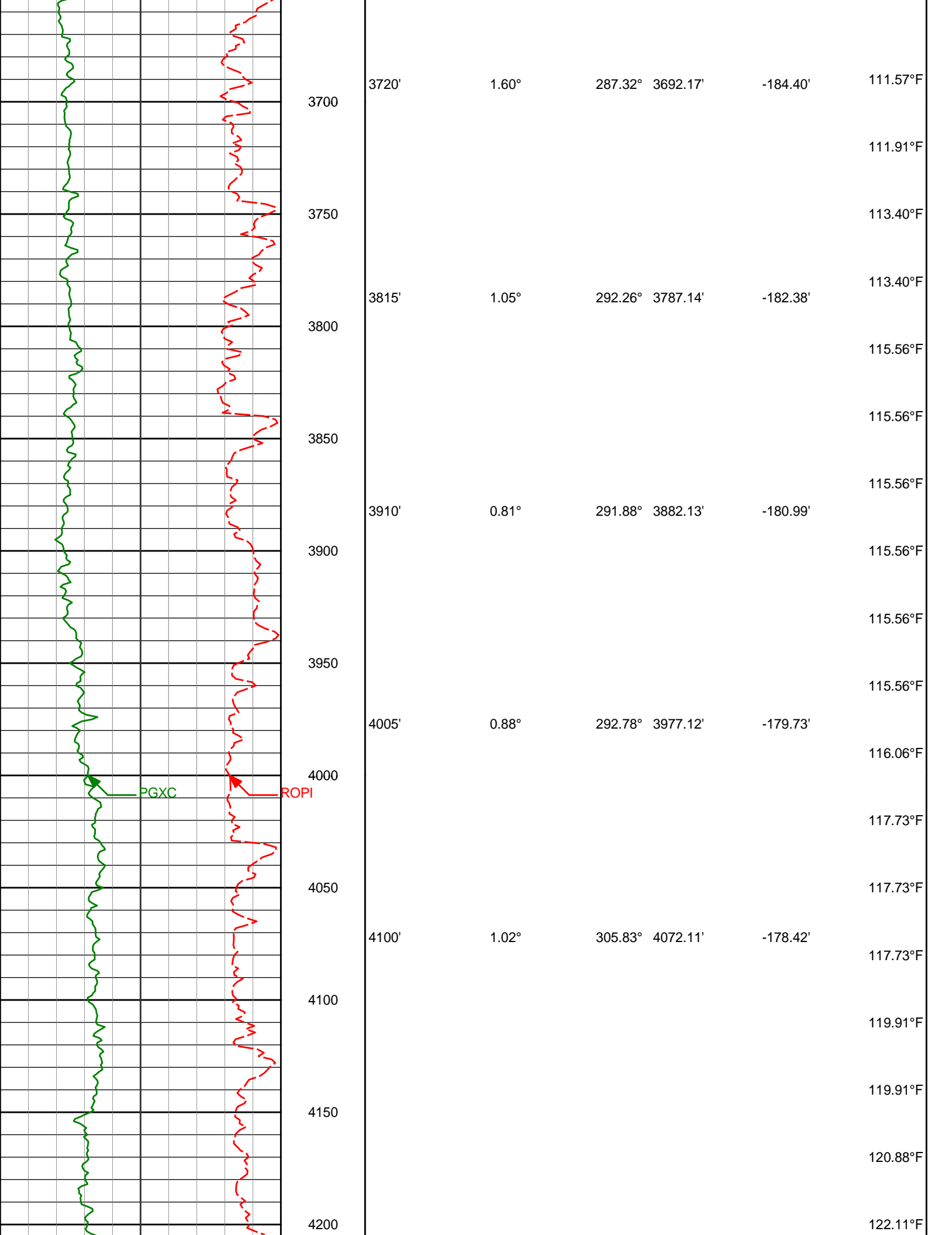


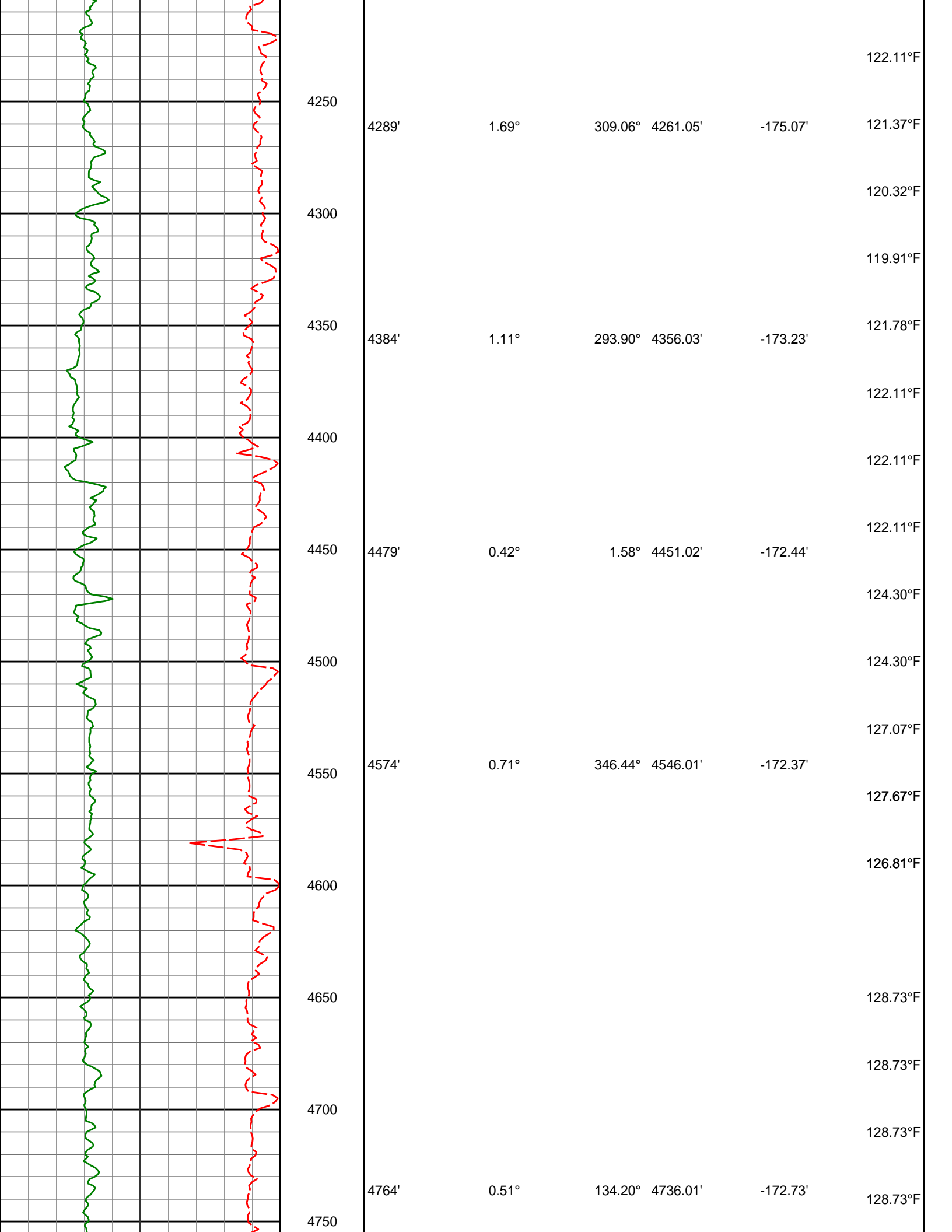
1468'	0.69°	80.11°	1467.88'	-13.60'	77.99°F
1500					77.99°F
1550					77.99°F
1561'	2.15°	138.38°	1560.85'	-15.23'	80.01°F
1600					80.01°F
1650	3.71°	143.70°	1653.73'	-17.93'	80.01°F
1654'					80.01°F
1700					
1746'	5.46°	134.73°	1745.43'	-22.45'	82.02°F
1750					82.02°F
1800					82.02°F
1838'	7.82°	144.28°	1836.81'	-28.69'	82.02°F
1850					82.02°F
1900					82.02°F
1930'	9.87°	138.82°	1927.71'	-36.82'	84.06°F
1950					84.06°F
2000					84.06°F

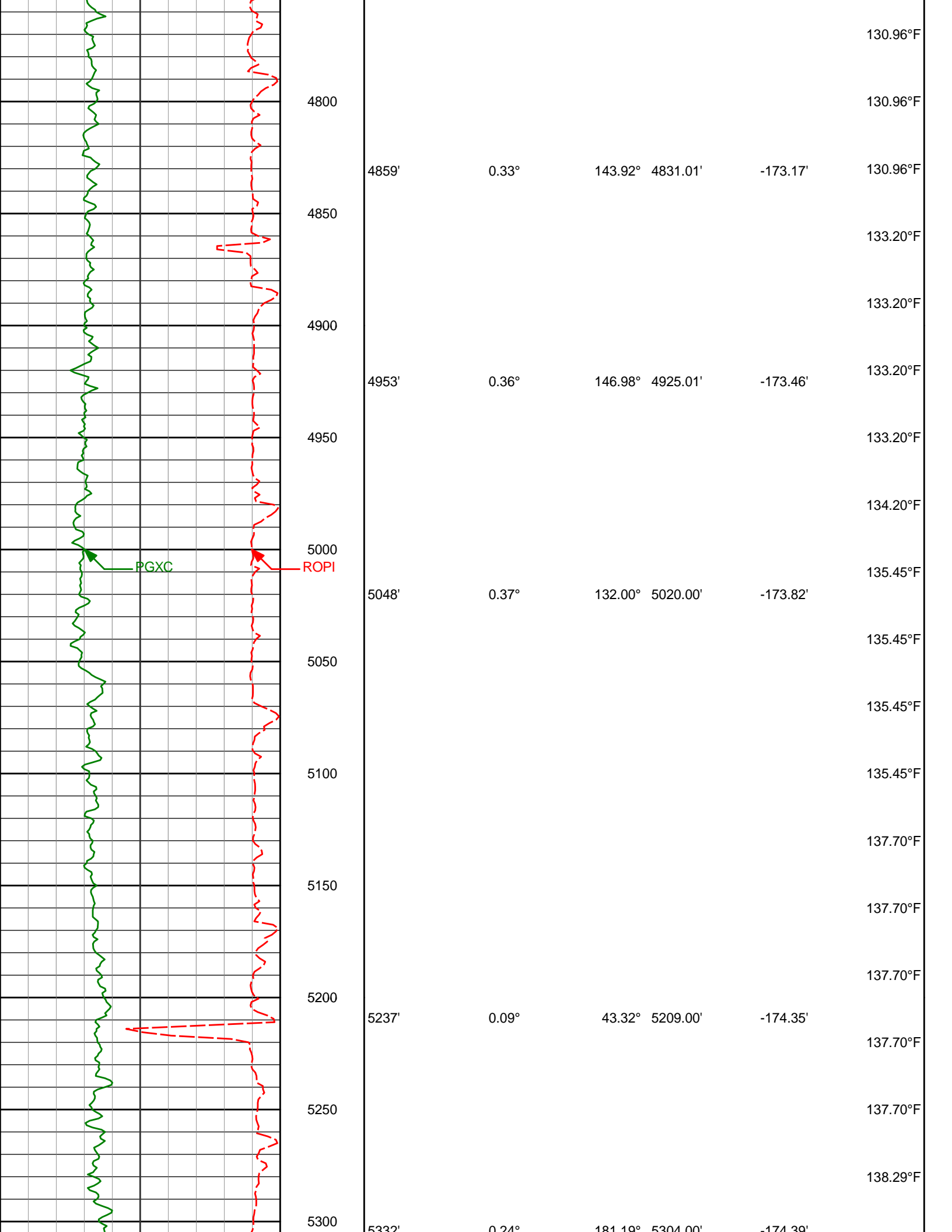


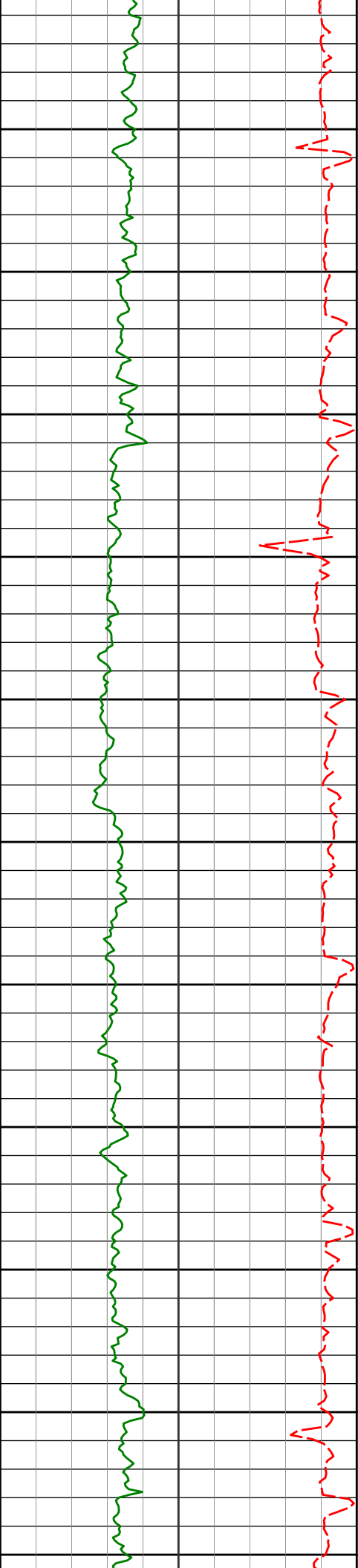












5350

5400

5450

5500

5550

5600

5650

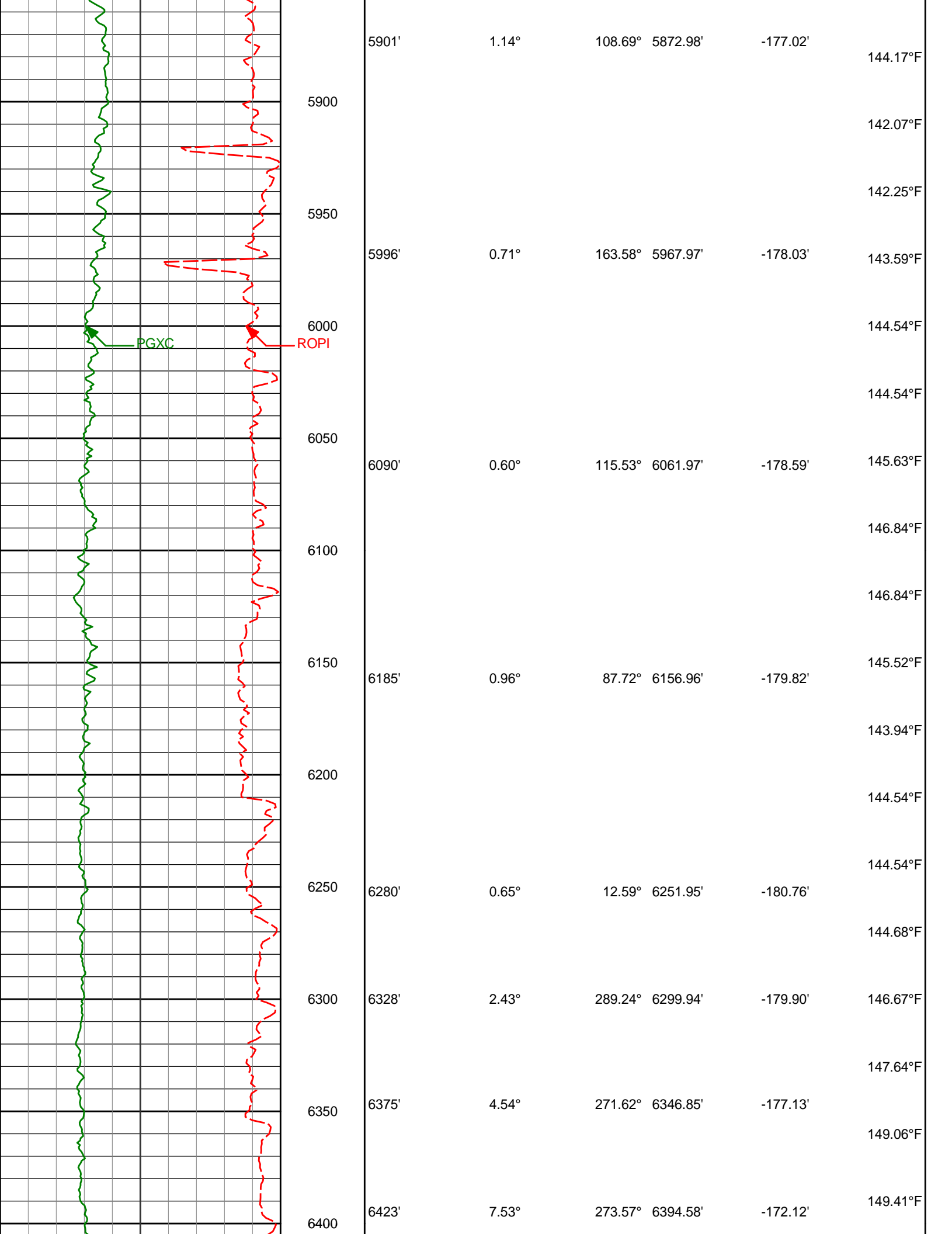
5700

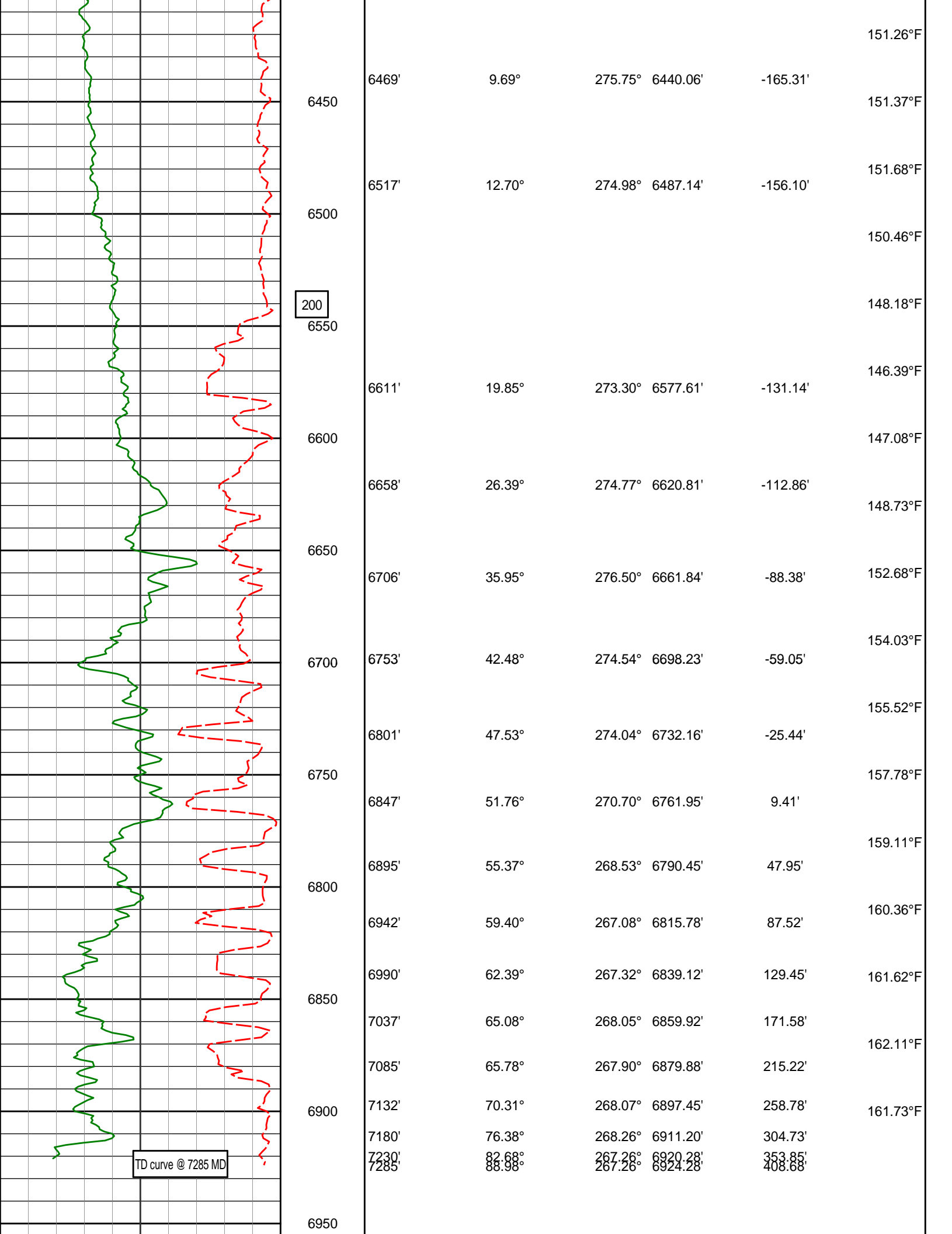
5750

5800

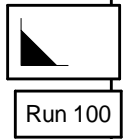
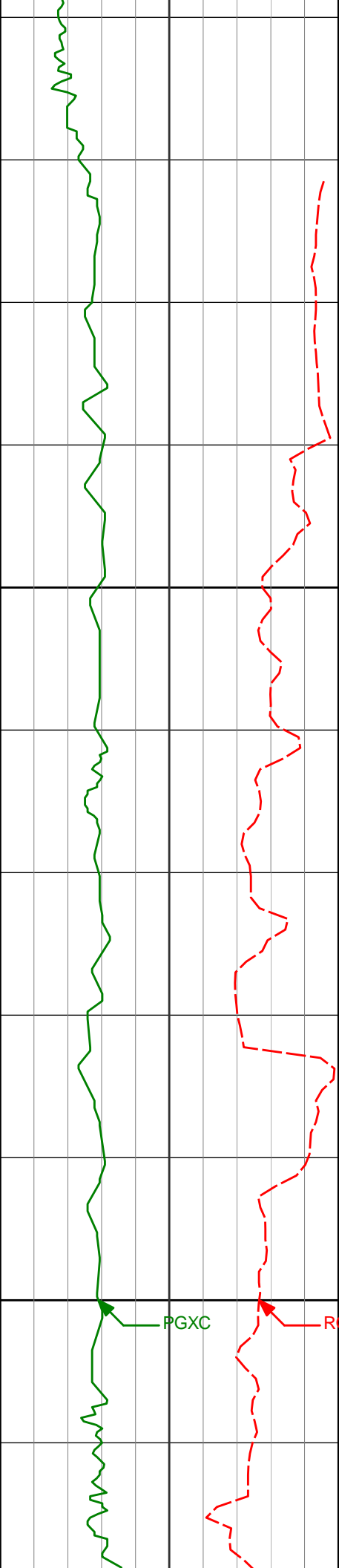
5850

5352	0.24°	130.10°	5394.00'	-174.33'	139.96°F
					139.96°F
					139.96°F
5427'	0.24°	130.10°	5399.00'	-174.52'	141.44°F
					141.71°F
					139.96°F
5522'	0.65°	55.57°	5494.00'	-175.12'	142.25°F
					142.25°F
					142.25°F
5616'	0.17°	73.07°	5588.00'	-175.72'	142.25°F
					142.25°F
					142.25°F
5711'	0.06°	323.28°	5683.00'	-175.83'	142.57°F
					144.17°F
					144.54°F
5806'	0.57°	154.71°	5777.99'	-175.98'	144.54°F
					144.54°F
					144.54°F
					144.78°F





[illegible]



900

917'

1.18°

148.60°

916.93'

-8.73'

70.02°F

70.02°F

72.00°F

72.00°F

72.00°F

1000

1009'

1.23°

148.60°

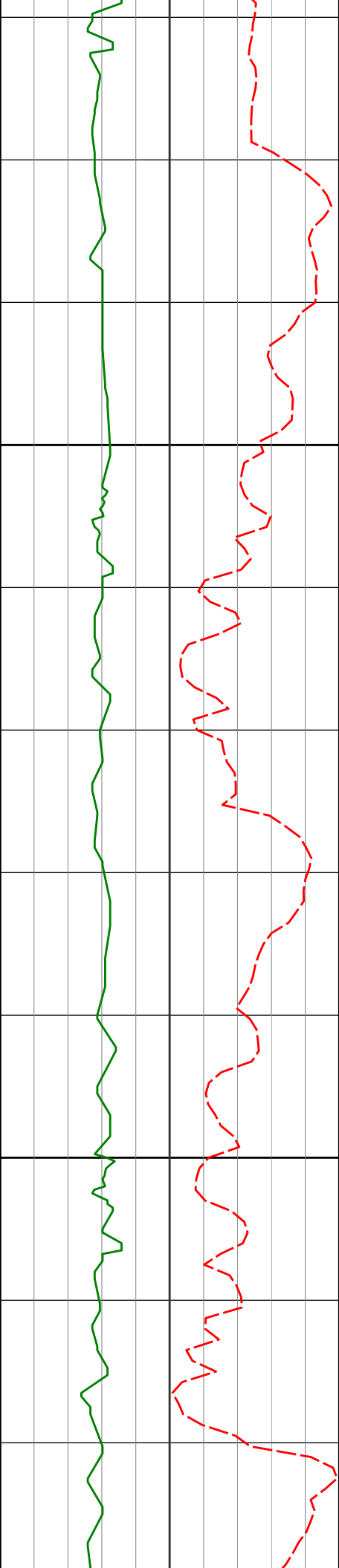
1008.91'

-9.63'

72.48°F

PGXC

RDPI



1100

1101'

0.25°

96.10°

1100.90'

-10.29'

73.98°F

73.98°F

73.98°F

1200

1193'

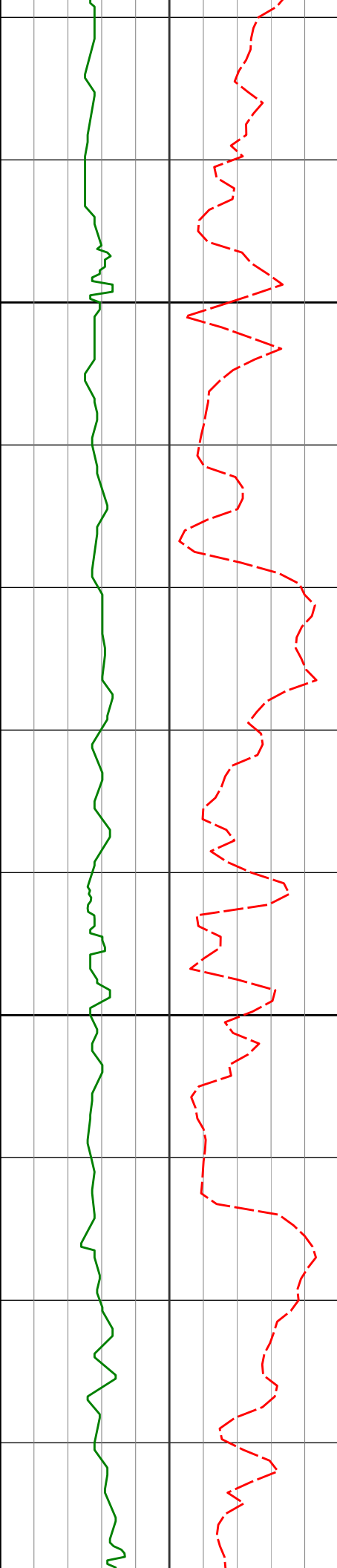
0.58°

88.76°

1192.89'

-10.95'

73.98°F



1300

1400

1284'

0.47°

78.00°

1283.89'

-11.78'

1377'

0.67°

52.75°

1376.89'

-12.61'

1468'

0.69°

80.11°

1467.88'

-13.60'

73.98°F

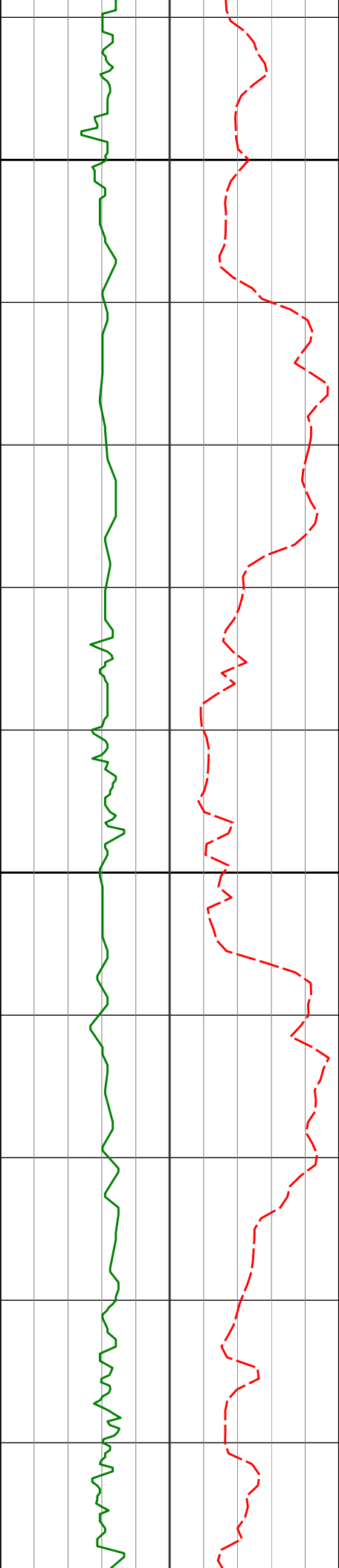
75.97°F

75.97°F

77.99°F

77.99°F

77.99°F



1500

77.99°F

77.99°F

1561'

2.15°

138.38°

1560.85'

-15.23'

80.01°F

80.01°F

1600

80.01°F

1654'

3.71°

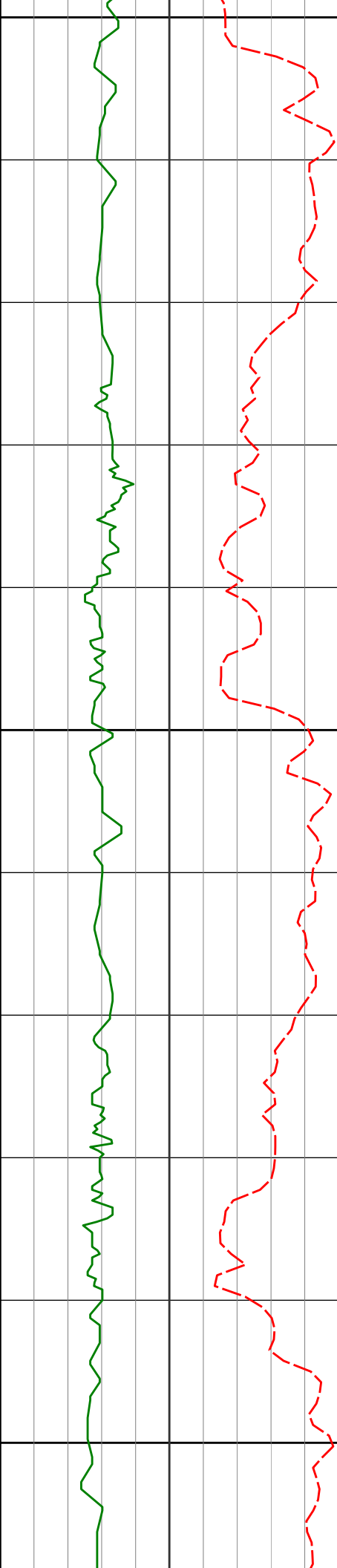
143.70°

1653.73'

-17.93'

80.01°F

80.01°F



1700

1746'

5.46°

134.73°

1745.43'

-22.45'

82.02°F

82.02°F

1800

1838'

7.82°

144.28°

1836.81'

-28.69'

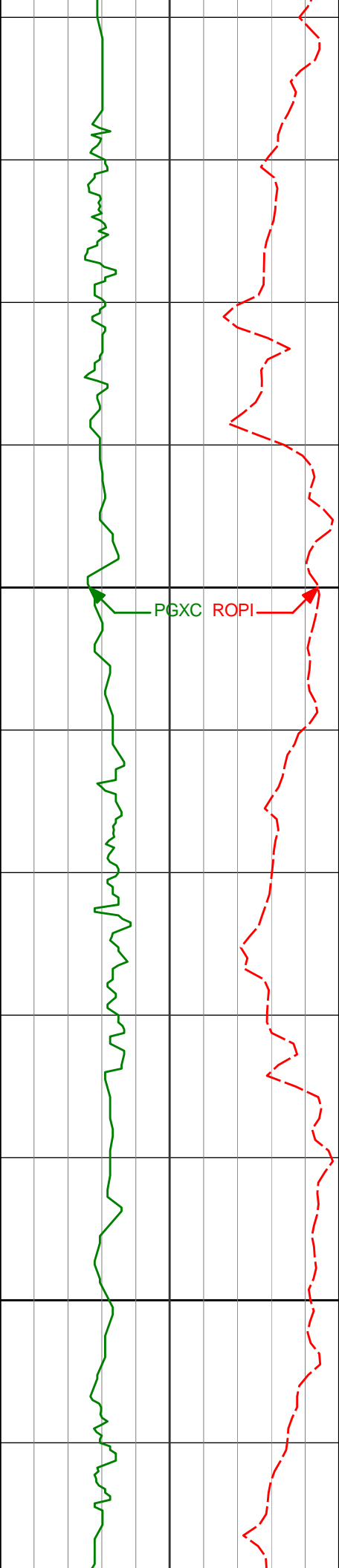
82.02°F

82.02°F

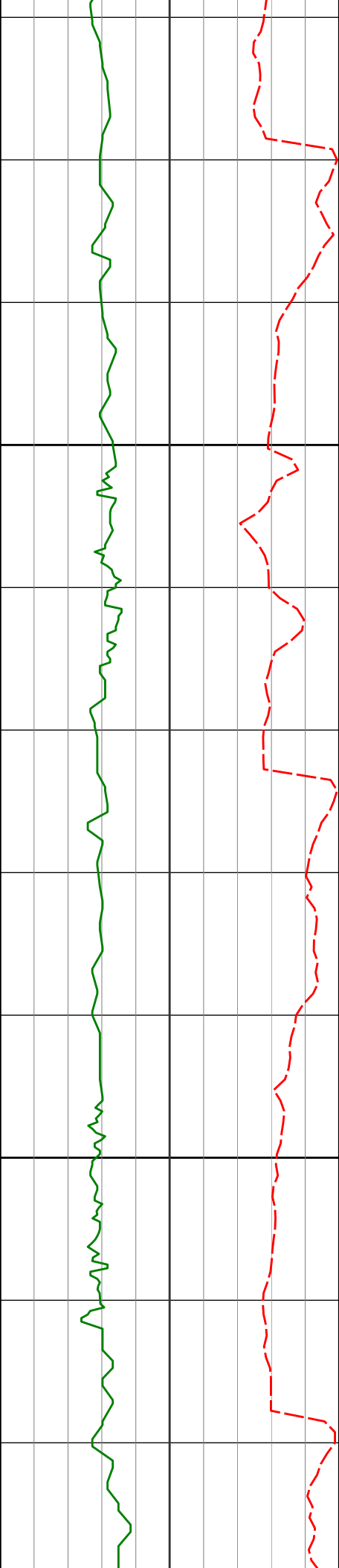
82.02°F

1900

82.02°F



84.06°F	1930'	9.87°	138.82°	1927.71'	-36.82'
84.06°F					
84.06°F					
84.06°F					
84.62°F	2000				
84.62°F					
85.82°F	2021'	11.80°	140.36°	2017.09'	-47.05'
85.82°F					
86.09°F					
86.09°F					
88.14°F	2100				
88.14°F					
88.14°F	2113'	13.27°	142.07°	2106.89'	-58.54'
88.14°F					
88.14°F					



2200

2205'

12.52°

138.08° 2196.57'

-70.67'

88.14°F

88.14°F

88.14°F

88.14°F

2300

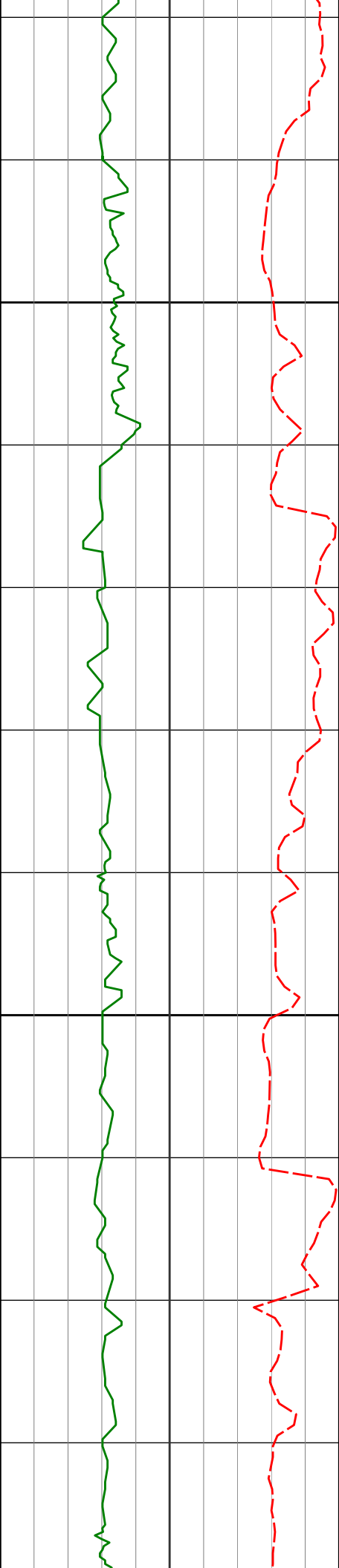
2300'

12.80°

139.02° 2289.26'

-83.44'

88.14°F



2394'

12.87°

141.70°

2380.92'

-95.72'

2400

90.65°F

90.72°F

90.19°F

92.26°F

2489'

13.34°

142.12°

2473.44'

-107.91'

2500

92.26°F

92.26°F

2583'

12.46°

139.86°

2565.07'

-120.06'



2600

2678'

2700

2773'

11.77°

11.51°

139.55°

139.07°

2657.95'

2751.00'

-131.97'

-143.52'

94.33°F

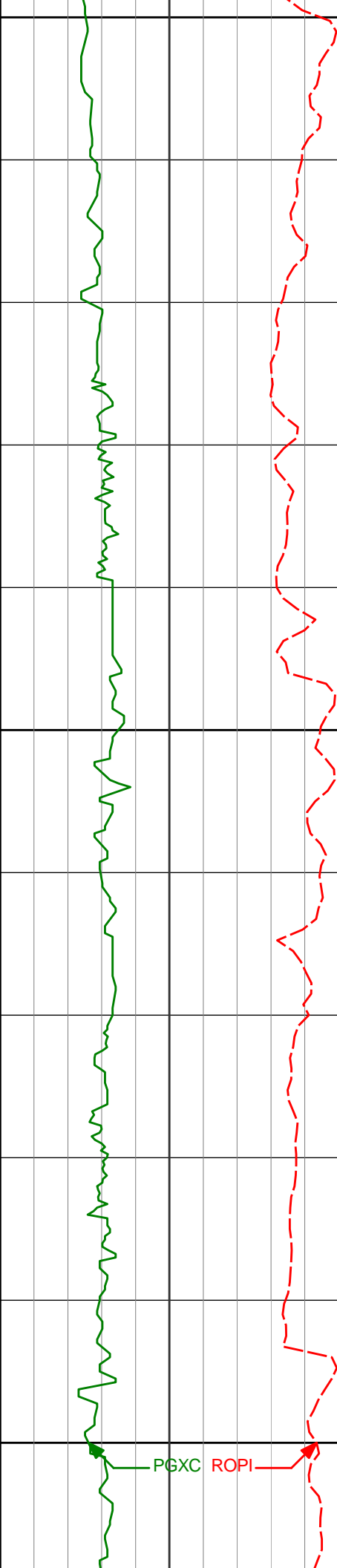
94.33°F

96.42°F

96.42°F

96.42°F

96.42°F



2800

2868'

11.96°

138.64°

2844.01'

-155.30'

2900

2962'

9.45°

140.02°

2936.37'

-165.84'

3000

PGXC

ROPI

96.42°F

96.42°F

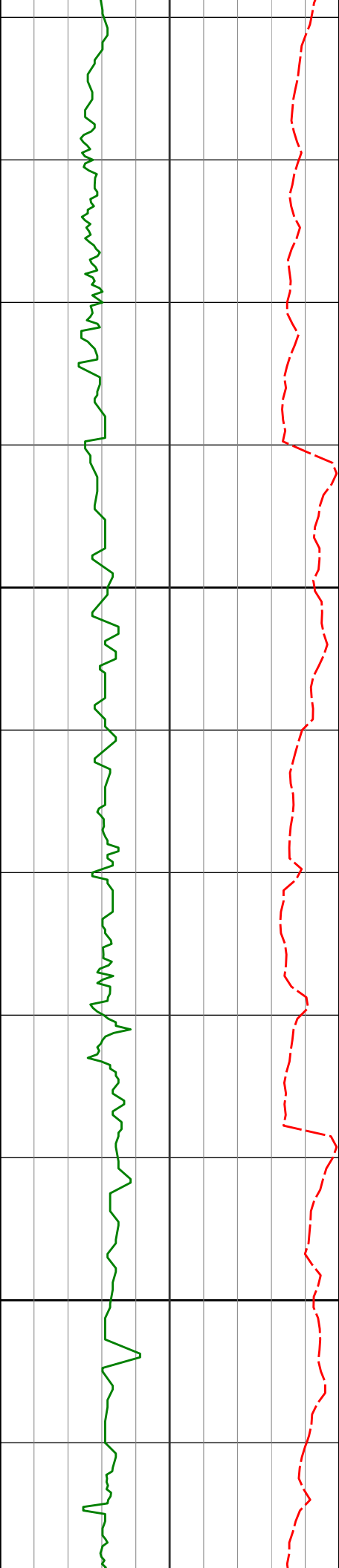
98.09°F

98.51°F

98.51°F

98.51°F

98.51°F



3100

3200

3057'

7.52°

143.70°

3030.33'

-173.82'

100.62°F

100.62°F

100.62°F

102.72°F

3152'

5.57°

141.75°

3124.70'

-179.80'

102.72°F

102.72°F

104.83°F

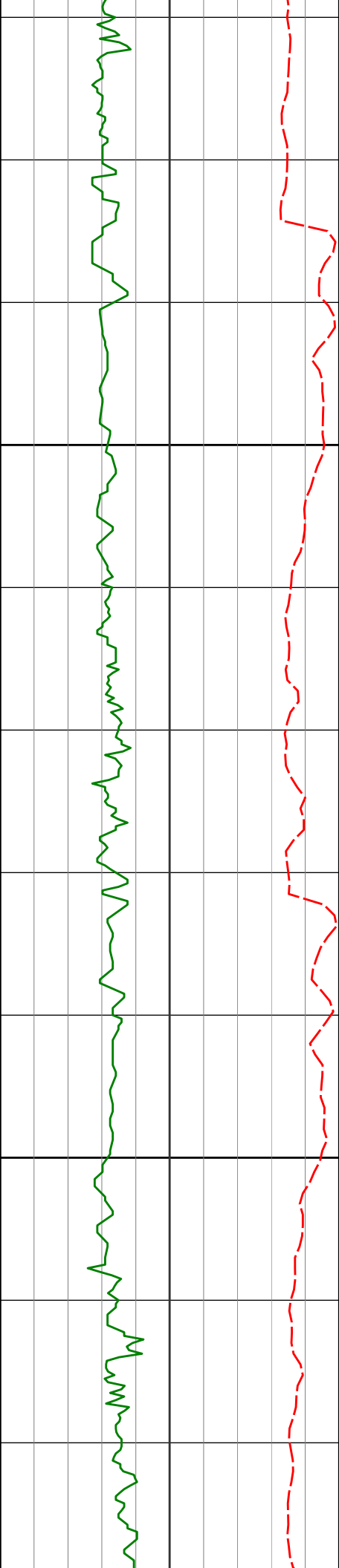
3247'

2.63°

139.95°

3219.45'

-183.71'



3300

3342'

3.51°

154.00°

3314.31'

-186.12'

3400

3436'

1.36°

138.52°

3408.22'

-187.90'

104.83°F

104.83°F

106.97°F

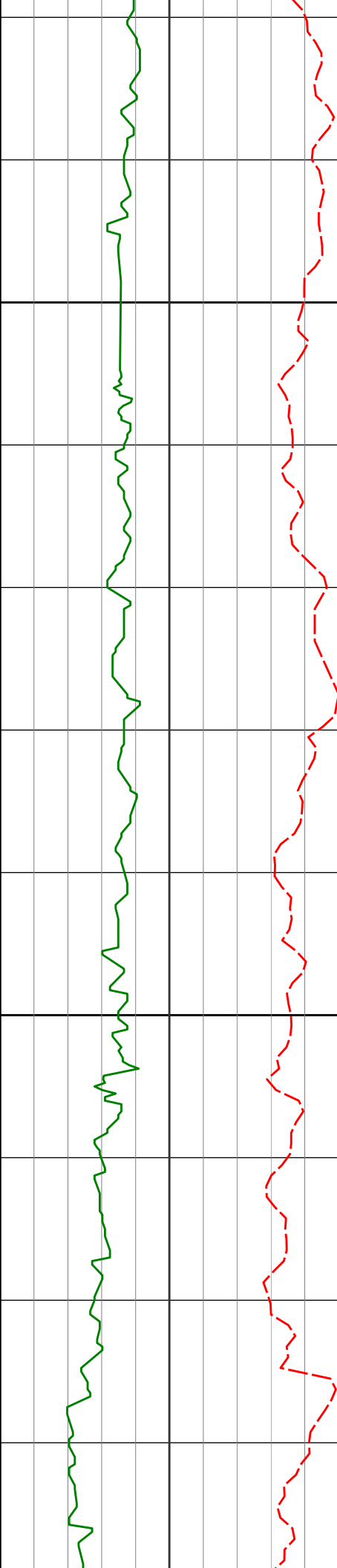
106.97°F

106.97°F

106.97°F

106.97°F

106.97°F



3500

3531'

0.92°

307.64°

3503.22'

-188.02'

108.59°F

110.50°F

111.24°F

111.24°F

3600

3626'

1.23°

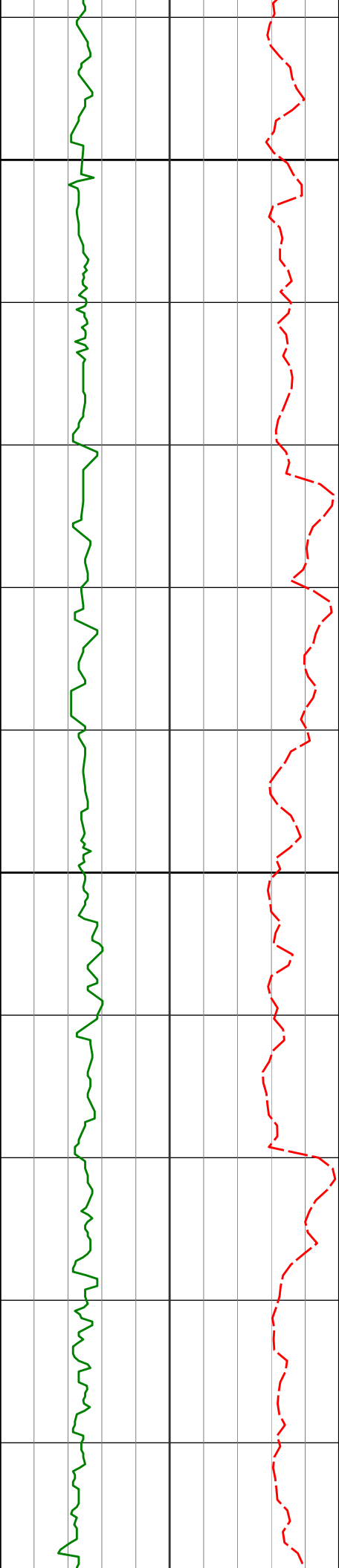
292.60°

3598.20'

-186.53'

158.20°F

157.02°F



3700

3720'

1.60°

287.32° 3692.17'

-184.40'

111.57°F

111.91°F

113.40°F

113.40°F

3800

3815'

1.05°

292.26° 3787.14'

-182.38'

115.56°F

115.56°F

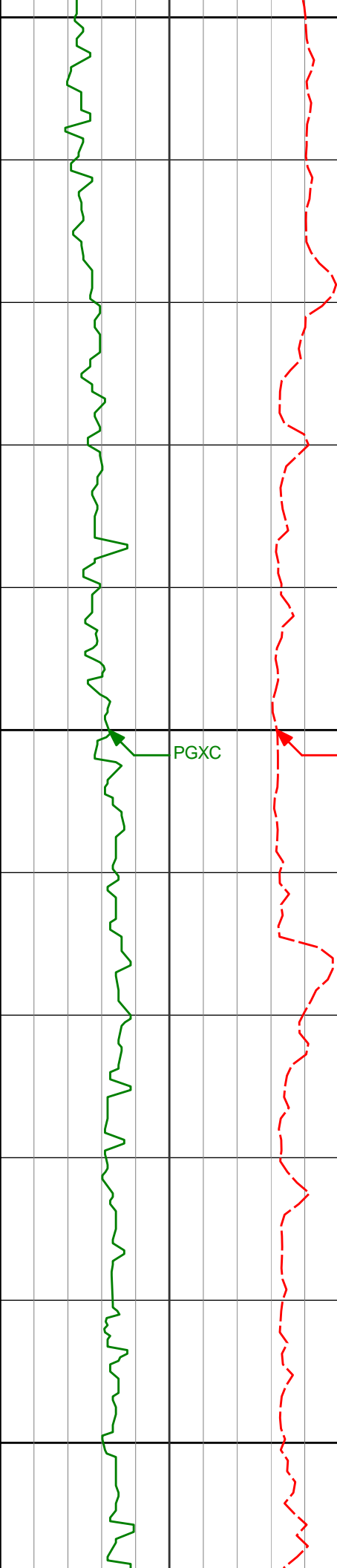
115.56°F

3910'

0.81°

291.88° 3882.13'

-180.99'



3900

4000

4100

4005'

0.88°

292.78°

3977.12'

-179.73'

4100'

1.02°

305.83°

4072.11'

-178.42'

115.56°F

115.56°F

115.56°F

116.06°F

117.73°F

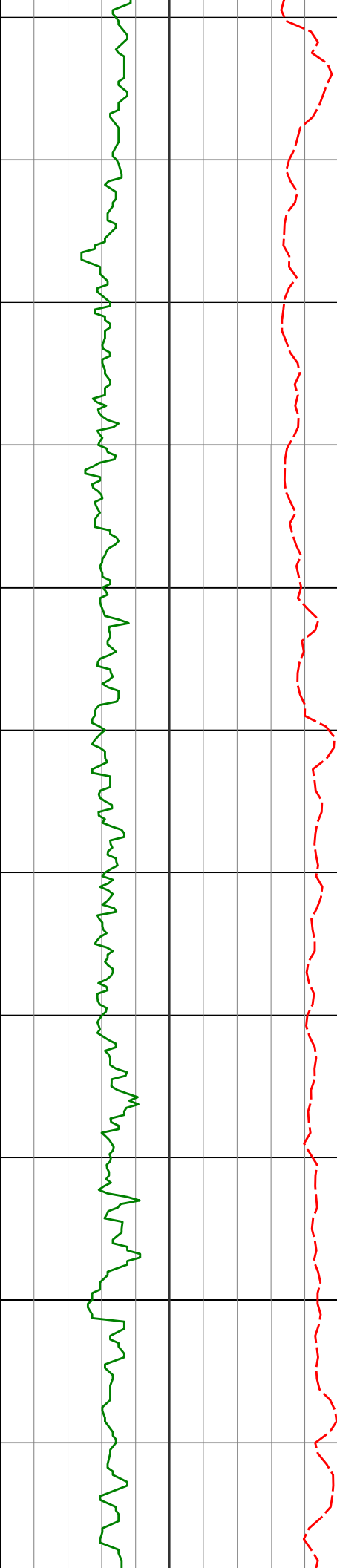
117.73°F

117.73°F

119.91°F

PGXC

ROPI



4200

4289'

4300

1.69°

309.06°

4261.05'

-175.07'

119.91°F

120.88°F

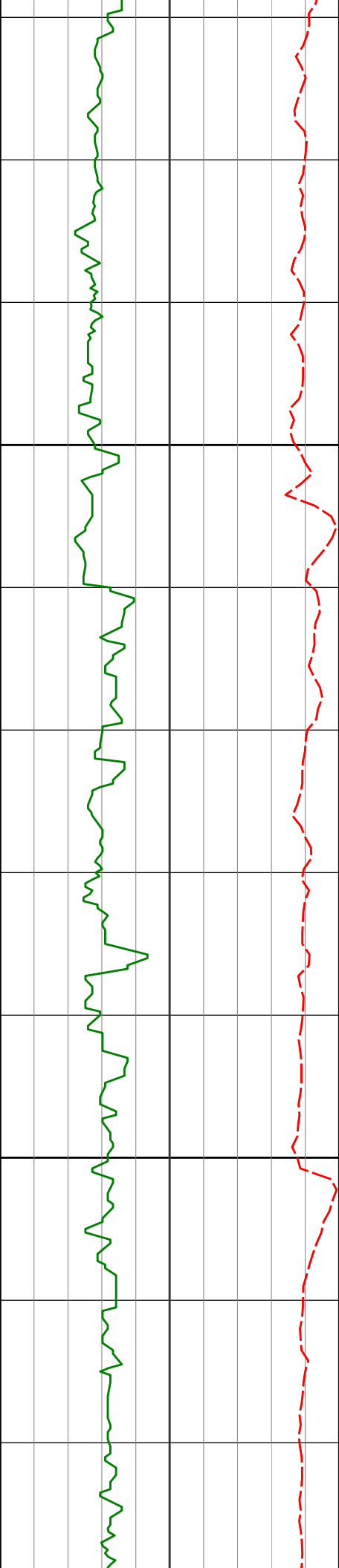
122.11°F

122.11°F

121.37°F

120.32°F

119.91°F



4400

4500

4384'

1.11°

293.90°

4356.03'

-173.23'

121.78°F

122.11°F

122.11°F

122.11°F

4479'

0.42°

1.58°

4451.02'

-172.44'

124.30°F

124.30°F

127.07°F

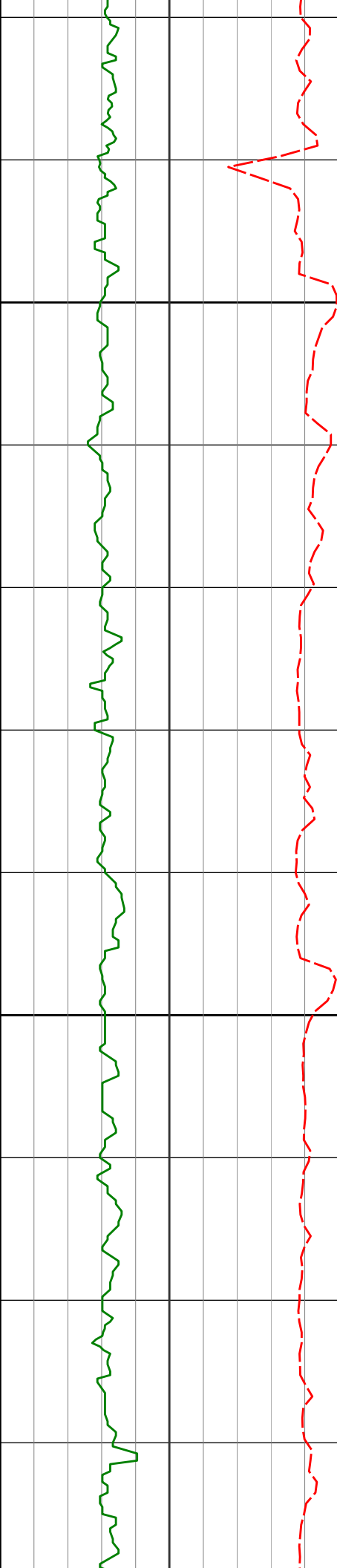
4574'

0.71°

346.44°

4546.01'

-172.37'



4600

4700

4764'

0.51°

134.20°

4736.01'

-172.73'

127.67°F

126.81°F

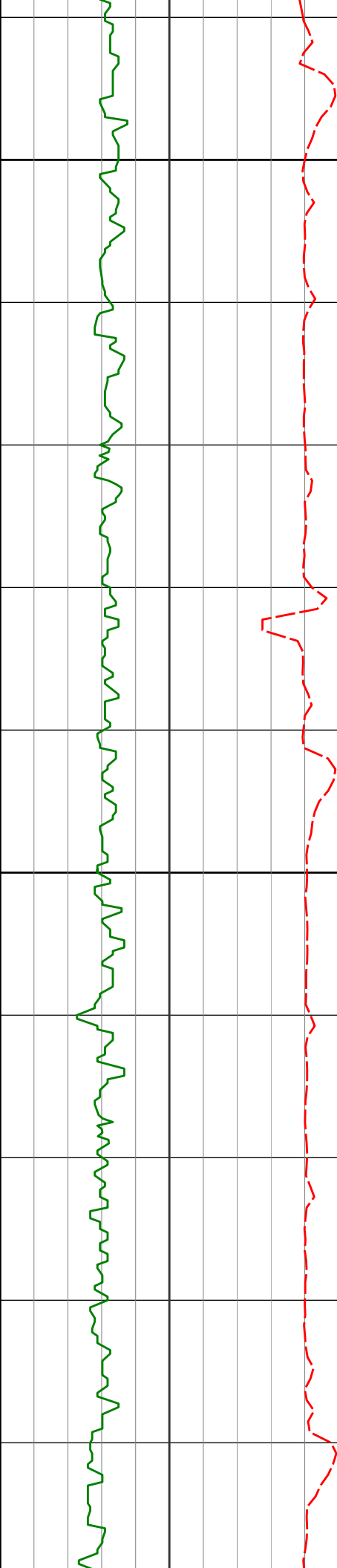
128.73°F

128.73°F

128.73°F

128.73°F

130.96°F



4800

4859'

0.33°

143.92°

4831.01'

-173.17'

130.96°F

130.96°F

133.20°F

4900

4953'

0.36°

146.98°

4925.01'

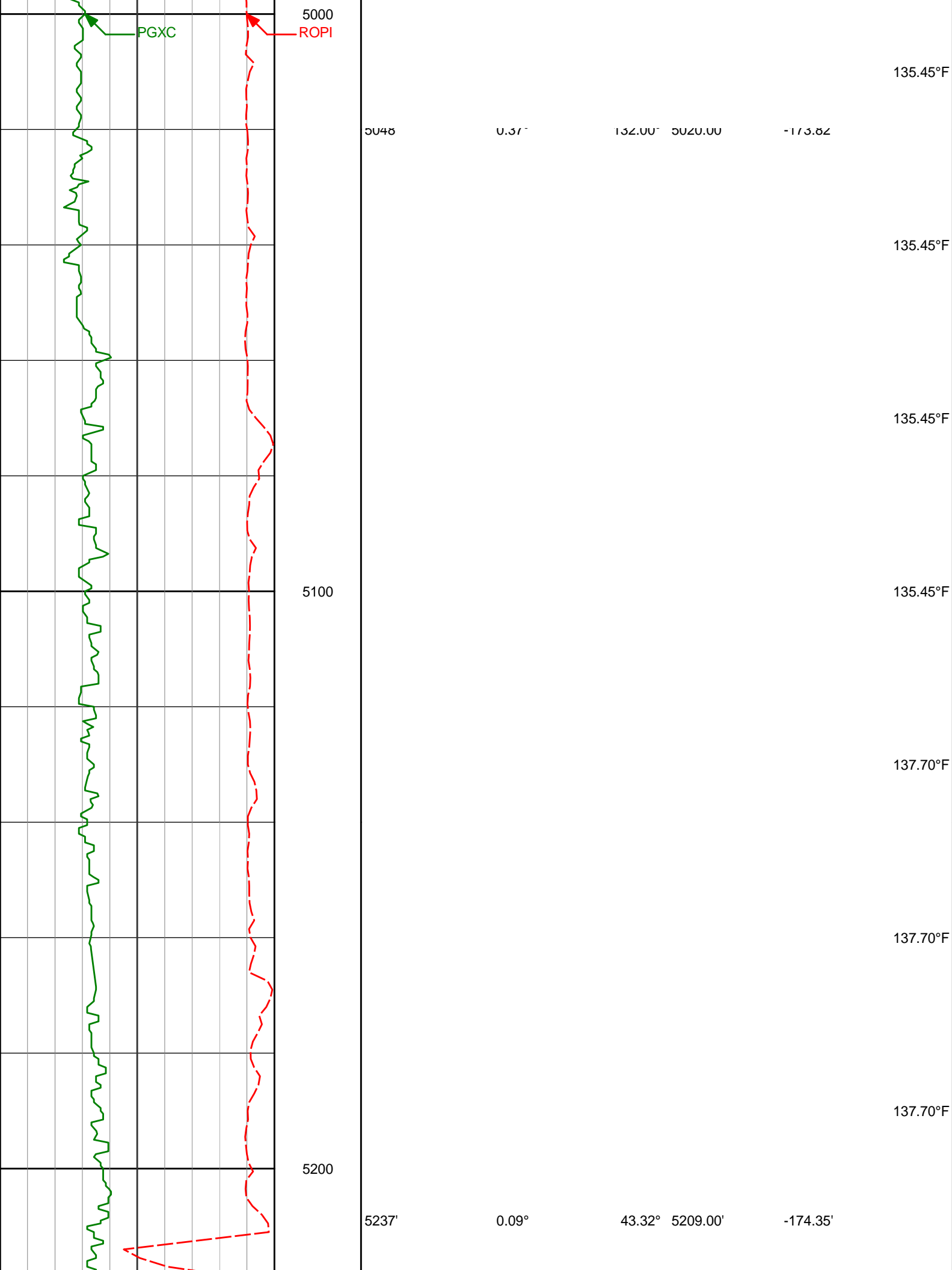
-173.46'

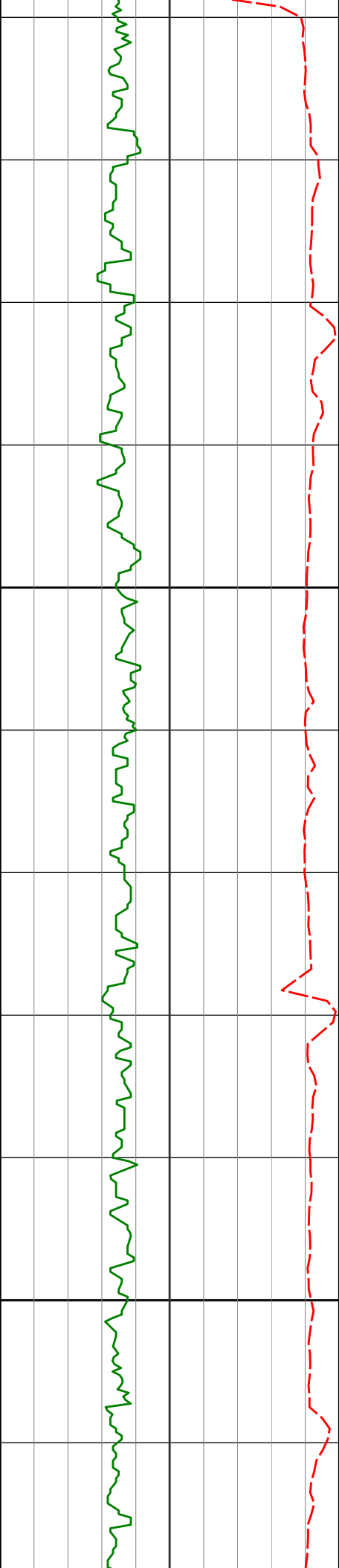
133.20°F

133.20°F

133.20°F

134.20°F





5300

5332'

0.24°

181.19°

5304.00'

-174.39'

137.70°F

137.70°F

138.29°F

139.96°F

139.96°F

139.96°F

5400

5427'

0.24°

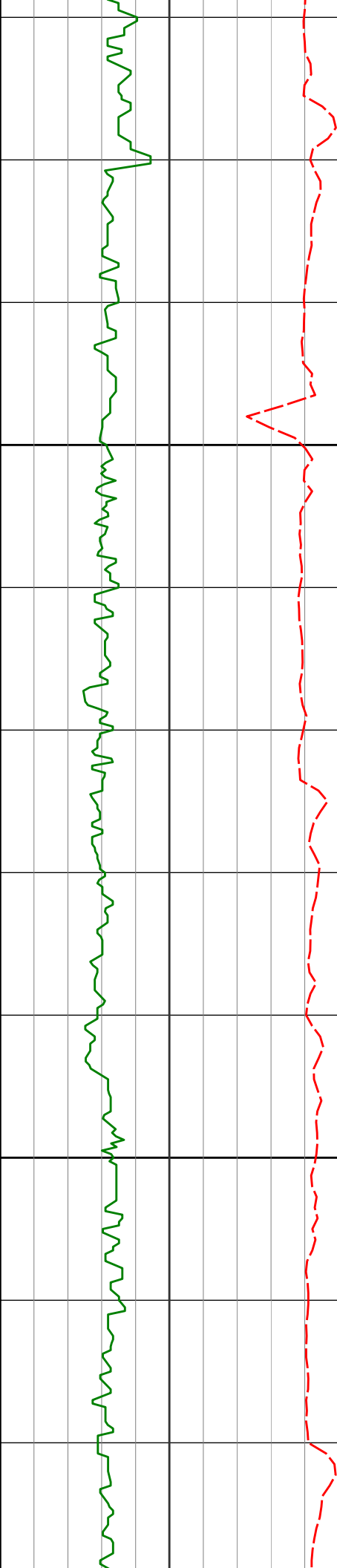
130.10°

5399.00'

-174.52'

141.44°F

141.71°F



5500

5522'

0.65°

55.57° 5494.00'

-175.12'

139.96°F

142.25°F

142.25°F

142.25°F

142.25°F

5616'

0.17°

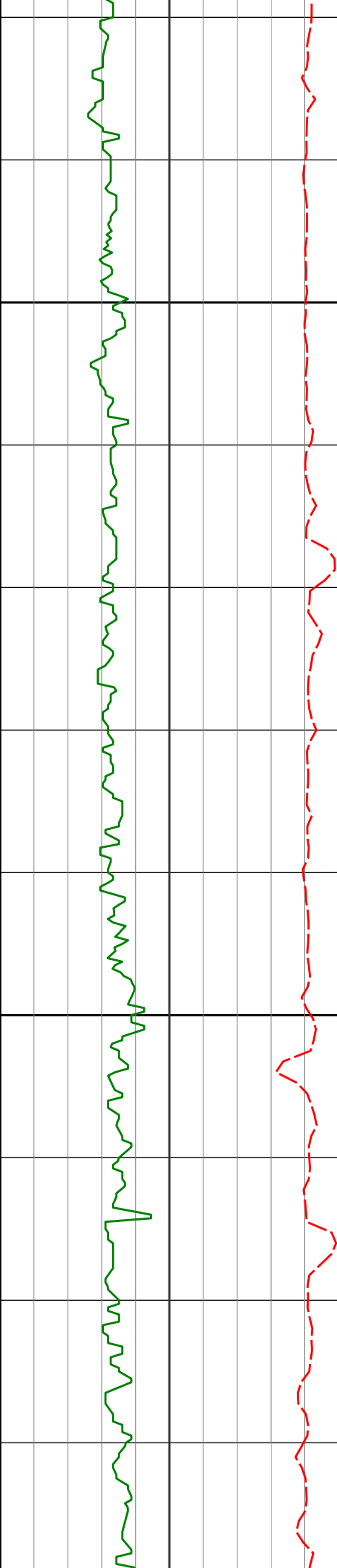
73.07° 5588.00'

-175.72'

142.25°F

142.25°F

5600



5700

5800

5711'

5806'

5901'

0.06°

0.57°

1.14°

323.28° 5683.00'

154.71° 5777.99'

108.69° 5872.98'

-175.83'

-175.98'

-177.02'

142.57°F

144.17°F

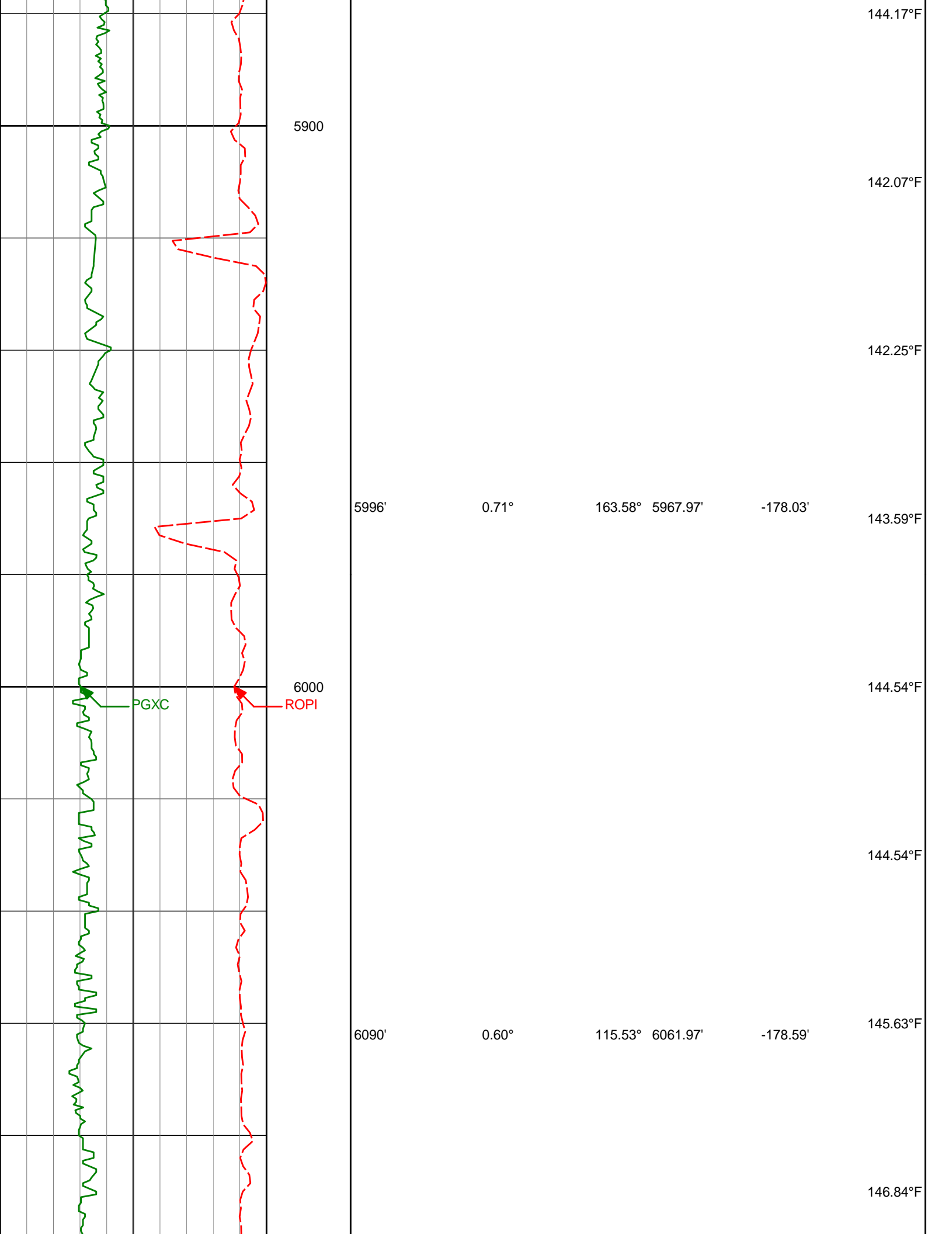
144.54°F

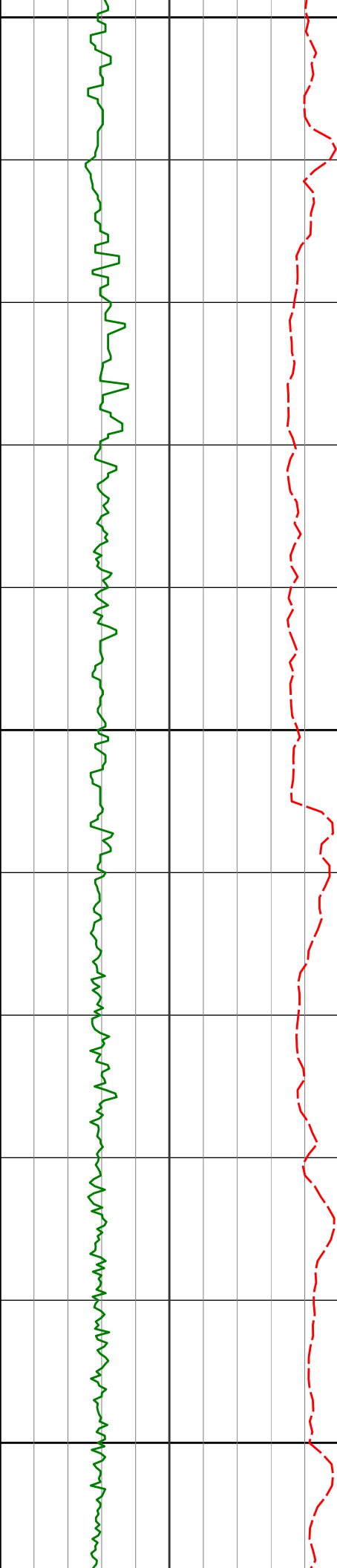
144.54°F

144.54°F

144.54°F

144.78°F





6100

146.84°F

145.52°F

6185'

0.96°

87.72°

6156.96'

-179.82'

143.94°F

6200

144.54°F

144.54°F

6280'

0.65°

12.59°

6251.95'

-180.76'

144.68°F

6300

6328'

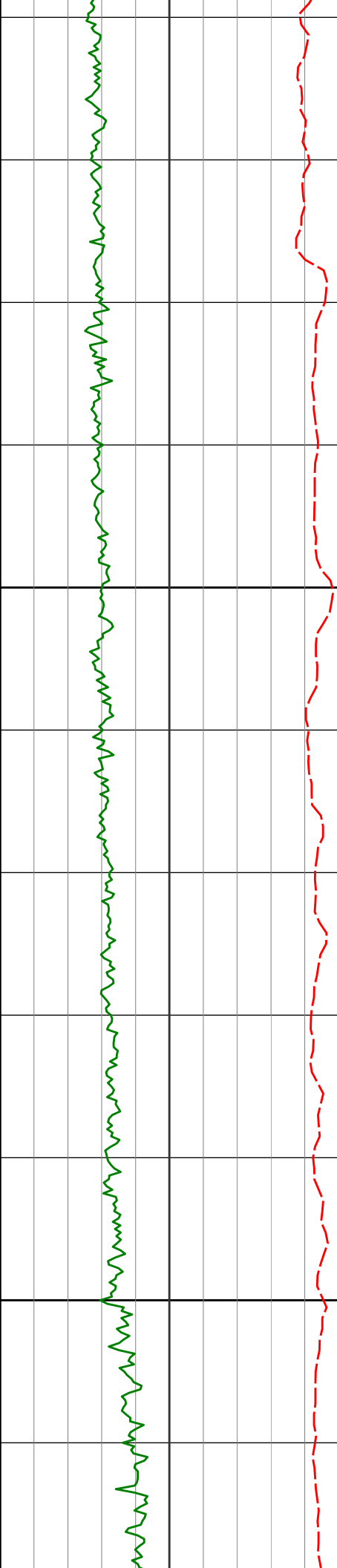
2.43°

289.24°

6299.94'

-179.90'

146.67°F



6400

6500

6375'

6423'

6469'

6517'

4.54°

7.53°

9.69°

12.70°

271.62°

273.57°

275.75°

274.98°

6346.85'

6394.58'

6440.06'

6487.14'

-177.13'

-172.12'

-165.31'

-156.10'

147.64°F

149.06°F

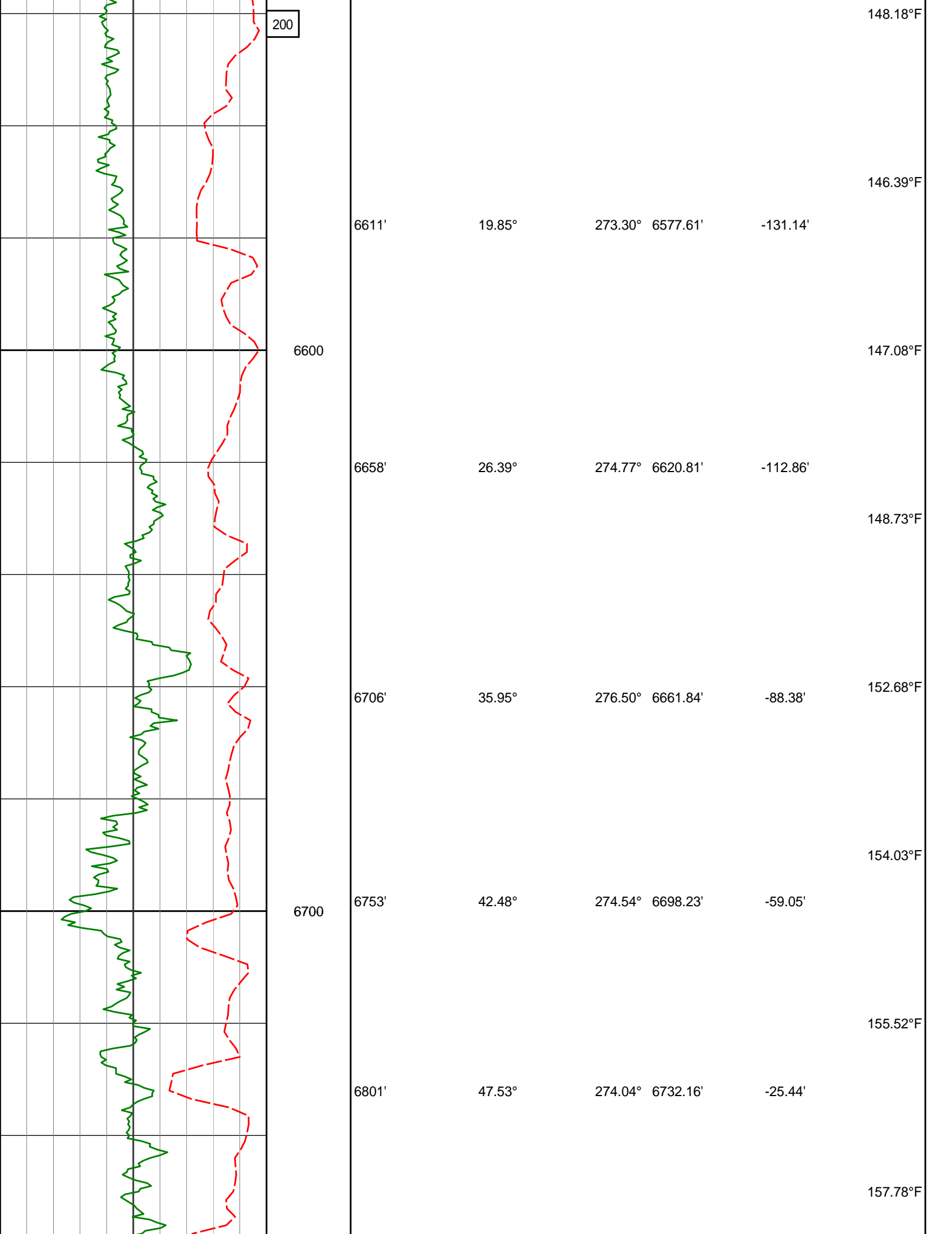
149.41°F

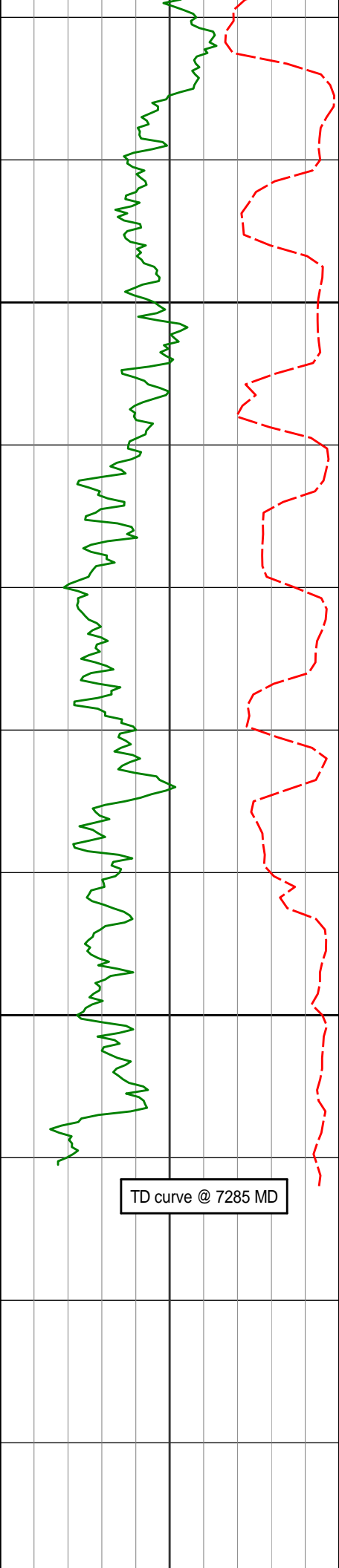
151.26°F

151.37°F

151.68°F

150.46°F





6800

6900

6847'	51.76°	270.70°	6761.95'	9.41'	
					159.11°F
6895'	55.37°	268.53°	6790.45'	47.95'	
					160.36°F
6942'	59.40°	267.08°	6815.78'	87.52'	
					161.62°F
6990'	62.39°	267.32°	6839.12'	129.45'	
					162.11°F
7037'	65.08°	268.05°	6859.92'	171.58'	
					161.73°F
7085'	65.78°	267.90°	6879.88'	215.22'	
7132'	70.31°	268.07°	6897.45'	258.78'	
7180'	76.38°	268.26°	6911.20'	304.73'	
7230'	82.68°	267.26°	6920.28'	353.85'	
7285'	88.98°	267.26°	6924.28'	408.68'	

[illegible]

HALLIBURTON

DIRECTIONAL SURVEY REPORT

**Noble
Reliance E23-63-1HNC
Wattenberg
Weld
USA
CA-XX-0902139045
Tied in @ Surface
First two Survey's from 3rd party source (Multi Shot EMS)
Final survey projected to bit.**

Measured Depth (feet)	Inclination (degrees)	Direction (degrees)	Vertical Depth (feet)	Latitude (feet)	Departure (feet)	Vertical Section (feet)	Dogleg (deg/100ft)
0.00	0.00	0.00	0.00	0.00 N	0.00 E	0.00	TIE-IN
286.00	1.20	93.90	285.98	0.20 S	2.99 E	-2.97	0.42
592.00	0.20	108.10	591.95	0.59 S	6.69 E	-6.64	0.33
917.00	1.18	148.60	916.93	3.62 S	8.98 E	-8.73	0.32
1009.00	1.23	148.60	1008.91	5.27 S	9.98 E	-9.63	0.05
1101.00	0.25	96.10	1100.90	6.14 S	10.70 E	-10.29	1.19
1193.00	0.58	88.76	1192.89	6.15 S	11.36 E	-10.95	0.36
1284.00	0.47	78.00	1283.89	6.06 S	12.19 E	-11.78	0.16
1377.00	0.67	52.75	1376.89	5.65 S	12.99 E	-12.61	0.34
1468.00	0.69	80.11	1467.88	5.23 S	13.96 E	-13.60	0.35
1561.00	2.15	138.38	1560.85	6.44 S	15.67 E	-15.23	2.02
1654.00	3.71	143.70	1653.73	10.17 S	18.61 E	-17.93	1.70
1746.00	5.46	134.73	1745.43	15.65 S	23.48 E	-22.45	2.05
1838.00	7.82	144.28	1836.81	23.82 S	30.24 E	-28.69	2.82
1930.00	9.87	138.82	1927.71	34.83 S	39.09 E	-36.82	2.41
2021.00	11.80	140.36	2017.09	47.87 S	50.16 E	-47.05	2.14
2113.00	13.27	142.07	2106.89	63.44 S	62.66 E	-58.54	1.65
2205.00	12.52	138.08	2196.57	79.19 S	75.81 E	-70.67	1.26
2300.00	12.80	139.02	2289.26	94.80 S	89.59 E	-83.44	0.37
2394.00	12.87	141.70	2380.92	110.87 S	102.91 E	-95.72	0.64
2489.00	13.34	142.12	2473.44	127.83 S	116.19 E	-107.91	0.50
2583.00	12.46	139.86	2565.07	144.14 S	129.39 E	-120.06	1.08
2678.00	11.77	139.55	2657.95	159.35 S	142.28 E	-131.97	0.73
2773.00	11.51	139.07	2751.00	173.88 S	154.78 E	-143.52	0.29
2868.00	11.96	138.64	2844.01	188.43 S	167.49 E	-155.30	0.48
2962.00	9.45	140.02	2936.37	201.66 S	178.89 E	-165.84	2.68
3057.00	7.52	143.70	3030.33	212.64 S	187.58 E	-173.82	2.11
3152.00	5.57	141.75	3124.70	221.28 S	194.12 E	-179.80	2.07
3247.00	2.63	139.95	3219.45	226.57 S	198.37 E	-183.71	3.10
3342.00	3.51	154.00	3314.31	230.85 S	201.05 E	-186.12	1.21
3436.00	1.36	138.52	3408.22	234.27 S	203.05 E	-187.90	2.37
3531.00	0.92	307.64	3503.22	234.65 S	203.19 E	-188.02	2.39
3626.00	1.23	292.60	3598.20	233.79 S	201.65 E	-186.53	0.44
3720.00	1.60	287.32	3692.17	233.01 S	199.46 E	-184.40	0.42
3815.00	1.05	292.26	3787.14	232.29 S	197.39 E	-182.38	0.59
3910.00	0.81	291.88	3882.13	231.71 S	195.96 E	-180.99	0.25

4005.00	0.88	292.78	3977.12	231.18 S	194.67 E	-179.73	0.07
4100.00	1.02	305.83	4072.11	230.40 S	193.31 E	-178.42	0.27
4289.00	1.69	309.06	4261.05	227.66 S	189.78 E	-175.07	0.36
4384.00	1.11	293.90	4356.03	226.40 S	187.85 E	-173.23	0.72
4479.00	0.42	1.58	4451.02	225.68 S	187.02 E	-172.44	1.08
4574.00	0.71	346.44	4546.01	224.76 S	186.89 E	-172.37	0.34
4764.00	0.51	134.20	4736.01	224.21 S	187.22 E	-172.73	0.62
4859.00	0.33	143.92	4831.01	224.72 S	187.69 E	-173.17	0.20
4953.00	0.36	146.98	4925.01	225.19 S	188.01 E	-173.46	0.04
5048.00	0.37	132.00	5020.00	225.64 S	188.40 E	-173.82	0.10
5237.00	0.09	43.32	5209.00	225.94 S	188.95 E	-174.35	0.20
5332.00	0.24	181.19	5304.00	226.09 S	189.00 E	-174.39	0.33
5427.00	0.24	130.10	5399.00	226.42 S	189.15 E	-174.52	0.22
5522.00	0.65	55.57	5494.00	226.24 S	189.75 E	-175.12	0.66
5616.00	0.17	73.07	5588.00	225.90 S	190.32 E	-175.72	0.52
5711.00	0.06	323.28	5683.00	225.82 S	190.42 E	-175.83	0.21
5806.00	0.57	154.71	5777.99	226.20 S	190.60 E	-175.98	0.66
5901.00	1.14	108.69	5872.98	226.93 S	191.69 E	-177.02	0.89
5996.00	0.71	163.58	5967.97	227.80 S	192.75 E	-178.03	0.98
6090.00	0.60	115.53	6061.97	228.57 S	193.36 E	-178.59	0.58
6185.00	0.96	87.72	6156.96	228.75 S	194.61 E	-179.82	0.54
6280.00	0.65	12.59	6251.95	228.20 S	195.52 E	-180.76	1.07
6328.00	2.43	289.24	6299.94	227.60 S	194.62 E	-179.90	5.09
6375.00	4.54	271.62	6346.85	227.22 S	191.82 E	-177.13	4.98
6423.00	7.53	273.57	6394.58	226.97 S	186.78 E	-172.12	6.24
6469.00	9.69	275.75	6440.06	226.39 S	179.92 E	-165.31	4.75
6517.00	12.70	274.98	6487.14	225.53 S	170.64 E	-156.10	6.28
6563.00	14.86	276.55	6531.81	224.42 S	159.74 E	-145.29	4.77
6611.00	19.85	273.30	6577.61	223.24 S	145.48 E	-131.14	10.59
6658.00	26.39	274.77	6620.81	221.91 S	127.09 E	-112.86	13.97
6706.00	35.95	276.50	6661.84	219.43 S	102.40 E	-88.38	20.00
6753.00	42.48	274.54	6698.23	216.60 S	72.84 E	-59.05	14.14
6801.00	47.53	274.04	6732.16	214.07 S	39.00 E	-25.44	10.55
6847.00	51.76	270.70	6761.95	212.66 S	3.99 E	9.41	10.73
6895.00	55.37	268.53	6790.45	212.93 S	34.62 W	47.95	8.35
6942.00	59.40	267.08	6815.78	214.46 S	74.17 W	87.52	8.96
6990.00	62.39	267.32	6839.12	216.51 S	116.05 W	129.45	6.24
7037.00	65.08	268.05	6859.92	218.21 S	158.16 W	171.58	5.89
7085.00	65.78	267.90	6879.88	219.75 S	201.78 W	215.22	1.49
7132.00	70.31	268.07	6897.45	221.28 S	245.34 W	258.78	9.64
7180.00	76.38	268.26	6911.20	222.75 S	291.28 W	304.73	12.65
7230.00	82.68	267.26	6920.28	224.68 S	340.38 W	353.85	12.75
7285.00	88.98	267.26	6924.28	227.30 S	395.15 W	408.68	11.45

CALCULATION BASED ON MINIMUM CURVATURE METHOD

**SURVEY COORDINATES RELATIVE TO WELL SYSTEM REFERENCE POINT
TVD VALUES GIVEN RELATIVE TO DRILLING MEASUREMENT POINT**

**VERTICAL SECTION RELATIVE TO WELL HEAD
VERTICAL SECTION IS COMPUTED ALONG A DIRECTION OF 266.39 DEGREES (GRID)
A TOTAL CORRECTION OF 7.60 DEG FROM MAGNETIC NORTH TO GRID NORTH HAS BEEN APPLIED**

**HORIZONTAL DISPLACEMENT IS RELATIVE TO THE WELL HEAD.
HORIZONTAL DISPLACEMENT(CLOSURE) AT 7285.00 FEET
IS 455.86 FEET ALONG 240.09 DEGREES (GRID)**