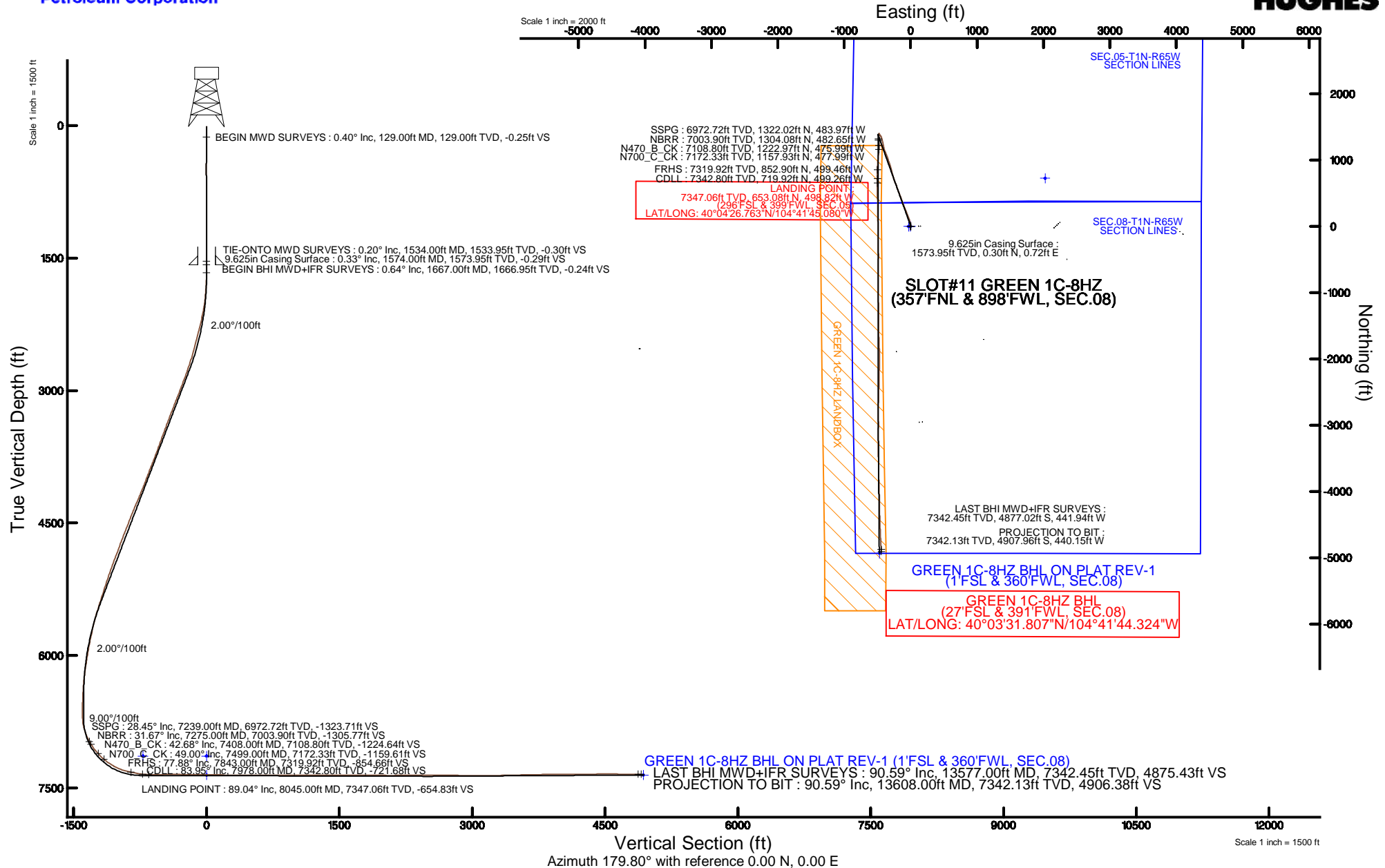


KERR-MCGEE OIL & GAS ONSHORE LP (WA)

Location: COLORADO Slot: SLOT#11 GREEN 1C-8HZ (357'FNL & 898'FWL, SEC.08)
Field: WELD COUNTY (UTM/TRUE NORTH) Well: GREEN 1C-8HZ
Facility: SEC.08-T1N-R65W Wellbore: GREEN 1C-8HZ PWB

Plot reference wellpath is GREEN 1C-8HZ (REV-A.0) PWP

True vertical depths are referenced to XTREME 24 (16'KB) (RKB)	Grid System: NAD83 / UTM Zone 13 North, US feet
Measured depths are referenced to XTREME 24 (16'KB) (RKB)	North Reference: True north
XTREME 24 (16'KB) (RKB) to Mean Sea Level: 4987 feet	Scale: True distance
Mean Sea Level to Mud line (At Slot: SLOT#11 GREEN 1C-8HZ (357'FNL & 898'FWL, SEC.08)): 0 feet	Depths are in feet
Coordinates are in feet referenced to Slot	Created by: amarc on 09/Jun/2015



REFERENCE WELLPATH IDENTIFICATION			
Operator	KERR-MCGEE OIL & GAS ONSHORE LP (WA)	Slot	SLOT#11 GREEN 1C-8HZ (357'FNL & 898'FWL, SEC.08)
Area	COLORADO	Well	GREEN 1C-8HZ
Field	WELD COUNTY (UTM/TRUE NORTH)	Wellbore	GREEN 1C-8HZ AWB <13608>
Facility	SEC.08-T1N-R65W		

REPORT SETUP INFORMATION			
Projection System	NAD83 / UTM Zone 13 North, US feet	Software System	WellArchitect® 4.0.0
North Reference	True	User	Amarcar
Scale	0.999608	Report Generated	09/Jun/2015 at 14:27
Convergence at slot	0.20° East	Database/Source file	KERR MCGEE UTM/GREEN_1C-8HZ_AWB__13608_.xml

WELLPATH LOCATION						
	Local coordinates		Grid coordinates		Geographic coordinates	
	North[ft]	East[ft]	Easting[US ft]	Northing[US ft]	Latitude	Longitude
Slot Location	385.72	-3720.30	1726001.43	14553211.02	40°04'20.309"N	104°41'38.663"W
Facility Reference Pt			1729721.63	14552838.79	40°04'16.500"N	104°40'50.808"W
Field Reference Pt			1698235.31	14552047.82	40°04'09.600"N	104°47'36.000"W

WELLPATH DATUM			
Calculation method	Minimum curvature	XTREME 24 (16'KB) (RKB) to Facility Vertical Datum	4987.00ft
Horizontal Reference Pt	Slot	XTREME 24 (16'KB) (RKB) to Mean Sea Level	4987.00ft
Vertical Reference Pt	XTREME 24 (16'KB) (RKB)	XTREME 24 (16'KB) (RKB) to Mud Line at Slot (SLOT#11 GREEN 1C-8HZ (357'FNL & 898'FWL, SEC.08))	4987.00ft
MD Reference Pt	XTREME 24 (16'KB) (RKB)	Section Origin	N 0.00, E 0.00 ft
Field Vertical Reference	Mean Sea Level	Section Azimuth	179.80°

Actual Wellpath Report

GREEN 1C-8HZ AWP

Page 2 of 6

REFERENCE WELLPATH IDENTIFICATION			
Operator	KERR-MCGEE OIL & GAS ONSHORE LP (WA)	Slot	SLOT#11 GREEN 1C-8HZ (357'FNL & 898'FWL, SEC.08)
Area	COLORADO	Well	GREEN 1C-8HZ
Field	WELD COUNTY (UTM/TRUE NORTH)	Wellbore	GREEN 1C-8HZ AWB <13608>
Facility	SEC.08-T1N-R65W		

WELLPATH DATA (144 stations) † = interpolated/extrapolated station										
MD [ft]	Inclination [°]	Azimuth [°]	TVD [ft]	Vert Sect [ft]	North [ft]	East [ft]	Latitude	Longitude	DLS [°/100ft]	Comments
0.00†	0.000	308.800	0.00	0.00	0.00	0.00	40°04'20.309"N	104°41'38.663"W	0.00	
16.00	0.000	308.800	16.00	0.00	0.00	0.00	40°04'20.309"N	104°41'38.663"W	0.00	
129.00	0.400	308.800	129.00	-0.25	0.25	-0.31	40°04'20.311"N	104°41'38.667"W	0.35	BEGIN MWD SURVEYS
207.00	0.400	289.800	207.00	-0.51	0.51	-0.78	40°04'20.314"N	104°41'38.673"W	0.17	
286.00	0.500	303.800	285.99	-0.80	0.80	-1.32	40°04'20.317"N	104°41'38.680"W	0.19	
367.00	0.800	316.900	366.99	-1.41	1.40	-2.00	40°04'20.323"N	104°41'38.689"W	0.41	
447.00	0.800	305.000	446.98	-2.14	2.13	-2.84	40°04'20.330"N	104°41'38.700"W	0.21	
527.00	0.400	203.300	526.98	-2.21	2.20	-3.41	40°04'20.331"N	104°41'38.707"W	1.21	
607.00	0.400	189.200	606.98	-1.68	1.66	-3.56	40°04'20.325"N	104°41'38.709"W	0.12	
687.00	0.600	205.900	686.97	-1.03	1.01	-3.79	40°04'20.319"N	104°41'38.712"W	0.31	
767.00	0.400	79.300	766.97	-0.70	0.69	-3.70	40°04'20.316"N	104°41'38.711"W	1.12	
847.00	0.600	115.000	846.97	-0.57	0.56	-3.05	40°04'20.315"N	104°41'38.702"W	0.45	
927.00	0.400	98.300	926.97	-0.35	0.34	-2.39	40°04'20.312"N	104°41'38.694"W	0.31	
1007.00	0.200	81.500	1006.97	-0.33	0.32	-1.98	40°04'20.312"N	104°41'38.688"W	0.27	
1087.00	0.200	127.200	1086.96	-0.27	0.26	-1.73	40°04'20.312"N	104°41'38.685"W	0.19	
1167.00	0.500	67.100	1166.96	-0.32	0.31	-1.29	40°04'20.312"N	104°41'38.680"W	0.55	
1247.00	0.600	63.500	1246.96	-0.64	0.64	-0.60	40°04'20.315"N	104°41'38.671"W	0.13	
1327.00	0.400	26.900	1326.96	-1.07	1.07	-0.10	40°04'20.320"N	104°41'38.664"W	0.46	
1407.00	0.500	169.200	1406.96	-0.98	0.98	0.10	40°04'20.319"N	104°41'38.662"W	1.07	
1487.00	0.400	138.400	1486.95	-0.42	0.43	0.35	40°04'20.313"N	104°41'38.659"W	0.32	
1534.00	0.200	90.800	1533.95	-0.30	0.30	0.54	40°04'20.312"N	104°41'38.656"W	0.65	TIE-ONTO MWD SURVEYS
1667.00	0.640	94.190	1666.95	-0.24	0.24	1.51	40°04'20.311"N	104°41'38.644"W	0.33	BEGIN BHI MWD+IFR SURVEYS
1762.00	2.750	16.690	1761.91	-2.38	2.39	2.69	40°04'20.333"N	104°41'38.628"W	2.83	
1857.00	3.800	359.960	1856.75	-7.71	7.72	3.35	40°04'20.385"N	104°41'38.620"W	1.48	
1952.00	6.490	350.380	1951.36	-16.15	16.16	2.45	40°04'20.469"N	104°41'38.632"W	2.96	
2046.00	8.660	351.170	2044.54	-28.39	28.40	0.47	40°04'20.590"N	104°41'38.657"W	2.31	
2141.00	12.050	344.480	2137.98	-45.03	45.02	-3.28	40°04'20.754"N	104°41'38.705"W	3.78	
2236.00	12.930	343.140	2230.73	-64.78	64.75	-9.02	40°04'20.949"N	104°41'38.779"W	0.98	
2330.00	14.430	343.760	2322.06	-86.11	86.06	-15.34	40°04'21.159"N	104°41'38.860"W	1.60	
2425.00	15.230	340.040	2413.90	-109.23	109.15	-22.91	40°04'21.388"N	104°41'38.958"W	1.31	
2520.00	16.170	338.200	2505.36	-133.28	133.17	-32.08	40°04'21.625"N	104°41'39.076"W	1.12	
2615.00	17.800	339.670	2596.21	-159.21	159.07	-42.04	40°04'21.881"N	104°41'39.204"W	1.77	
2709.00	19.380	338.850	2685.30	-187.27	187.09	-52.66	40°04'22.158"N	104°41'39.340"W	1.70	
2804.00	20.560	337.590	2774.59	-217.44	217.21	-64.71	40°04'22.456"N	104°41'39.495"W	1.32	
2899.00	21.810	338.240	2863.17	-249.29	249.02	-77.61	40°04'22.770"N	104°41'39.661"W	1.34	
2994.00	21.940	337.010	2951.33	-282.07	281.75	-91.09	40°04'23.093"N	104°41'39.835"W	0.50	
3089.00	23.150	339.320	3039.07	-315.93	315.56	-104.61	40°04'23.427"N	104°41'40.009"W	1.58	
3183.00	22.200	339.410	3125.80	-349.88	349.47	-117.38	40°04'23.763"N	104°41'40.173"W	1.01	
3278.00	21.970	340.810	3213.83	-383.51	383.06	-129.54	40°04'24.094"N	104°41'40.329"W	0.60	
3373.00	22.880	340.450	3301.65	-417.74	417.25	-141.56	40°04'24.432"N	104°41'40.484"W	0.97	
3468.00	21.220	340.060	3389.69	-451.35	450.81	-153.60	40°04'24.764"N	104°41'40.639"W	1.75	
3563.00	21.150	338.530	3478.27	-483.51	482.92	-165.74	40°04'25.081"N	104°41'40.795"W	0.59	
3658.00	21.730	338.600	3566.70	-515.87	515.25	-178.43	40°04'25.401"N	104°41'40.958"W	0.61	
3753.00	20.940	338.990	3655.19	-548.14	547.47	-190.93	40°04'25.719"N	104°41'41.119"W	0.84	
3848.00	21.960	341.850	3743.61	-580.91	580.20	-202.55	40°04'26.043"N	104°41'41.269"W	1.54	

REFERENCE WELLPATH IDENTIFICATION			
Operator	KERR-MCGEE OIL & GAS ONSHORE LP (WA)	Slot	SLOT#11 GREEN 1C-8HZ (357'FNL & 898'FWL, SEC.08)
Area	COLORADO	Well	GREEN 1C-8HZ
Field	WELD COUNTY (UTM/TRUE NORTH)	Wellbore	GREEN 1C-8HZ AWP <13608>
Facility	SEC.08-T1N-R65W		

WELLPATH DATA (144 stations) † = interpolated/extrapolated station										
MD [ft]	Inclination [°]	Azimuth [°]	TVD [ft]	Vert Sect [ft]	North [ft]	East [ft]	Latitude	Longitude	DLS [°/100ft]	Comments
3942.00	23.330	341.390	3830.36	-615.29	614.54	-213.97	40°04'26.382"N	104°41'41.415"W	1.47	
4037.00	21.830	336.690	3918.08	-649.39	648.59	-226.96	40°04'26.719"N	104°41'41.583"W	2.47	
4132.00	22.020	339.710	4006.22	-682.36	681.52	-240.13	40°04'27.044"N	104°41'41.752"W	1.20	
4227.00	21.800	342.210	4094.36	-715.90	715.02	-251.69	40°04'27.375"N	104°41'41.901"W	1.01	
4321.00	24.090	342.360	4180.91	-750.85	749.93	-262.84	40°04'27.720"N	104°41'42.044"W	2.44	
4416.00	24.150	346.510	4267.62	-788.26	787.31	-273.25	40°04'28.089"N	104°41'42.178"W	1.79	
4511.00	23.330	345.910	4354.59	-825.44	824.45	-282.36	40°04'28.456"N	104°41'42.295"W	0.90	
4606.00	21.290	344.170	4442.47	-860.31	859.29	-291.65	40°04'28.801"N	104°41'42.415"W	2.26	
4701.00	21.770	345.320	4530.84	-893.98	892.93	-300.82	40°04'29.133"N	104°41'42.533"W	0.67	
4796.00	22.660	342.140	4618.79	-928.48	927.39	-310.90	40°04'29.474"N	104°41'42.662"W	1.57	
4891.00	21.090	340.470	4706.95	-962.05	960.92	-322.22	40°04'29.805"N	104°41'42.808"W	1.78	
4986.00	21.680	342.000	4795.41	-994.88	993.71	-333.36	40°04'30.129"N	104°41'42.951"W	0.85	
5081.00	22.080	340.510	4883.57	-1028.44	1027.24	-344.74	40°04'30.460"N	104°41'43.098"W	0.72	
5176.00	20.530	339.390	4972.07	-1060.91	1059.66	-356.56	40°04'30.781"N	104°41'43.250"W	1.69	
5271.00	20.890	337.040	5060.94	-1092.14	1090.85	-369.03	40°04'31.089"N	104°41'43.410"W	0.95	
5365.00	20.940	336.310	5148.74	-1123.00	1121.66	-382.32	40°04'31.393"N	104°41'43.581"W	0.28	
5460.00	17.720	341.500	5238.38	-1152.31	1150.93	-393.73	40°04'31.683"N	104°41'43.728"W	3.84	
5555.00	18.440	346.910	5328.70	-1180.68	1179.28	-401.72	40°04'31.963"N	104°41'43.831"W	1.92	
5650.00	18.240	350.160	5418.87	-1209.99	1208.56	-407.67	40°04'32.252"N	104°41'43.907"W	1.10	
5744.00	16.430	347.670	5508.60	-1237.49	1236.04	-413.02	40°04'32.524"N	104°41'43.976"W	2.08	
5839.00	15.950	350.450	5599.84	-1263.51	1262.04	-418.05	40°04'32.781"N	104°41'44.041"W	0.96	
5934.00	12.520	342.660	5691.91	-1286.24	1284.75	-423.29	40°04'33.005"N	104°41'44.108"W	4.13	
6028.00	12.350	343.810	5783.71	-1305.64	1304.13	-429.13	40°04'33.197"N	104°41'44.183"W	0.32	
6122.00	11.080	344.690	5875.75	-1324.02	1322.50	-434.32	40°04'33.378"N	104°41'44.250"W	1.36	
6217.00	10.250	340.350	5969.11	-1340.80	1339.26	-439.57	40°04'33.544"N	104°41'44.318"W	1.22	
6312.00	10.320	330.740	6062.59	-1356.21	1354.65	-446.57	40°04'33.696"N	104°41'44.408"W	1.81	
6407.00	9.090	327.980	6156.23	-1370.03	1368.44	-454.71	40°04'33.832"N	104°41'44.512"W	1.38	
6501.00	8.250	324.400	6249.15	-1381.84	1380.22	-462.57	40°04'33.949"N	104°41'44.614"W	1.06	
6595.00	5.080	325.370	6342.51	-1390.77	1389.13	-468.87	40°04'34.037"N	104°41'44.694"W	3.37	
6690.00	2.720	328.990	6437.28	-1396.17	1394.52	-472.42	40°04'34.090"N	104°41'44.740"W	2.50	
6785.00	2.770	324.180	6532.17	-1399.98	1398.31	-474.92	40°04'34.127"N	104°41'44.772"W	0.25	
6879.00	0.390	283.970	6626.13	-1401.90	1400.23	-476.56	40°04'34.146"N	104°41'44.793"W	2.64	
6975.00	3.810	210.270	6722.06	-1399.23	1397.55	-478.49	40°04'34.120"N	104°41'44.818"W	3.87	
7069.00	13.920	188.920	6814.83	-1385.34	1383.65	-481.82	40°04'33.982"N	104°41'44.861"W	11.13	
7164.00	22.440	182.440	6905.01	-1355.89	1354.19	-484.37	40°04'33.691"N	104°41'44.894"W	9.20	
7239.00†	28.447	176.747	6972.72	-1323.71	1322.02	-483.97	40°04'33.373"N	104°41'44.889"W	8.64	SSPG
7259.00	30.080	175.590	6990.17	-1313.96	1312.26	-483.31	40°04'33.277"N	104°41'44.880"W	8.64	
7275.00†	31.668	175.222	7003.90	-1305.77	1304.08	-482.65	40°04'33.196"N	104°41'44.872"W	9.99	NBRR
7353.00	39.420	173.810	7067.32	-1260.66	1258.99	-478.27	40°04'32.751"N	104°41'44.815"W	9.99	
7408.00†	42.679	178.764	7108.80	-1224.64	1222.97	-475.99	40°04'32.395"N	104°41'44.786"W	8.37	N470_B CK
7448.00	45.170	181.990	7137.61	-1196.90	1195.23	-476.19	40°04'32.120"N	104°41'44.789"W	8.37	
7499.00†	49.001	183.507	7172.33	-1159.61	1157.93	-477.99	40°04'31.752"N	104°41'44.812"W	7.82	N700_C CK
7543.00	52.320	184.680	7200.22	-1125.68	1124.00	-480.43	40°04'31.417"N	104°41'44.843"W	7.82	
7638.00	60.550	186.040	7252.70	-1046.97	1045.26	-487.86	40°04'30.638"N	104°41'44.939"W	8.74	
7733.00	71.450	184.270	7291.29	-960.69	958.95	-495.59	40°04'29.786"N	104°41'45.038"W	11.60	

REFERENCE WELLPATH IDENTIFICATION

Operator	KERR-MCGEE OIL & GAS ONSHORE LP (WA)	Slot	SLOT#11 GREEN 1C-8HZ (357'FNL & 898'FWL, SEC.08)
Area	COLORADO	Well	GREEN 1C-8HZ
Field	WELD COUNTY (UTM/TRUE NORTH)	Wellbore	GREEN 1C-8HZ AWB <13608>
Facility	SEC.08-T1N-R65W		

WELLPATH DATA (144 stations) † = interpolated/extrapolated station

MD [ft]	Inclination [°]	Azimuth [°]	TVD [ft]	Vert Sect [ft]	North [ft]	East [ft]	Latitude	Longitude	DLS [°/100ft]	Comments
7827.00	77.430	180.530	7316.50	-870.29	868.53	-499.34	40°04'28.892"N	104°41'45.086"W	7.43	
7843.00†	77.876	180.394	7319.92	-854.66	852.90	-499.46	40°04'28.738"N	104°41'45.088"W	2.91	FRHS
7922.00	80.080	179.730	7335.02	-777.12	775.37	-499.55	40°04'27.971"N	104°41'45.089"W	2.91	
7978.00†	83.947	179.671	7342.80	-721.68	719.92	-499.26	40°04'27.423"N	104°41'45.085"W	6.91	CDLL
8017.00	86.640	179.630	7346.00	-682.81	681.06	-499.02	40°04'27.039"N	104°41'45.082"W	6.91	
8045.00	89.040	179.550	7347.06	-654.83	653.08	-498.82	40°04'26.763"N	104°41'45.080"W	8.58	LANDING POINT
8112.00	90.060	180.280	7347.58	-587.84	586.08	-498.72	40°04'26.101"N	104°41'45.078"W	1.87	
8207.00	90.800	180.200	7346.87	-492.84	491.09	-499.12	40°04'25.162"N	104°41'45.083"W	0.78	
8302.00	90.120	178.930	7346.11	-397.85	396.10	-498.40	40°04'24.223"N	104°41'45.074"W	1.52	
8397.00	89.110	178.300	7346.75	-302.87	301.13	-496.10	40°04'23.285"N	104°41'45.045"W	1.25	
8492.00	88.890	179.210	7348.40	-207.90	206.17	-494.04	40°04'22.346"N	104°41'45.018"W	0.99	
8587.00	89.480	178.930	7349.75	-112.92	111.19	-492.49	40°04'21.408"N	104°41'44.998"W	0.69	
8682.00	90.550	179.000	7349.73	-17.93	16.21	-490.78	40°04'20.469"N	104°41'44.976"W	1.13	
8776.00	89.600	179.850	7349.61	76.06	-77.79	-489.83	40°04'19.540"N	104°41'44.964"W	1.36	
8871.00	88.240	179.550	7351.40	171.04	-172.77	-489.34	40°04'18.602"N	104°41'44.957"W	1.47	
8966.00	89.080	178.570	7353.62	266.01	-267.73	-487.78	40°04'17.663"N	104°41'44.937"W	1.36	
9061.00	90.090	178.950	7354.31	360.99	-362.70	-485.72	40°04'16.725"N	104°41'44.911"W	1.14	
9156.00	89.320	180.290	7354.80	455.98	-457.69	-485.09	40°04'15.786"N	104°41'44.903"W	1.63	
9251.00	90.250	180.320	7355.15	550.98	-552.69	-485.60	40°04'14.847"N	104°41'44.909"W	0.98	
9346.00	91.200	180.010	7353.95	645.97	-647.68	-485.87	40°04'13.908"N	104°41'44.913"W	1.05	
9440.00	90.650	180.470	7352.43	739.95	-741.67	-486.27	40°04'12.980"N	104°41'44.918"W	0.76	
9535.00	89.110	180.270	7352.63	834.94	-836.66	-486.88	40°04'12.041"N	104°41'44.926"W	1.63	
9724.00	90.590	179.530	7353.13	1023.94	-1025.66	-486.55	40°04'10.173"N	104°41'44.921"W	0.88	
9913.00	89.570	178.940	7352.86	1212.92	-1214.64	-484.03	40°04'08.306"N	104°41'44.889"W	0.62	
10103.00	89.690	179.210	7354.09	1402.90	-1404.61	-480.96	40°04'06.428"N	104°41'44.849"W	0.16	
10292.00	90.620	179.880	7353.58	1591.90	-1593.60	-479.46	40°04'04.561"N	104°41'44.830"W	0.61	
10482.00	89.540	177.150	7353.31	1781.83	-1783.51	-474.54	40°04'02.684"N	104°41'44.767"W	1.55	
10576.00	89.230	178.030	7354.32	1875.75	-1877.42	-470.58	40°04'01.756"N	104°41'44.716"W	0.99	
10671.00	88.710	180.140	7356.03	1970.73	-1972.39	-469.07	40°04'00.817"N	104°41'44.696"W	2.29	
10861.00	91.170	181.510	7356.23	2160.68	-2162.35	-471.80	40°03'58.940"N	104°41'44.731"W	1.48	
10956.00	89.880	181.270	7355.36	2255.63	-2257.32	-474.11	40°03'58.002"N	104°41'44.761"W	1.38	
11146.00	89.690	181.430	7356.07	2445.56	-2447.26	-478.58	40°03'56.125"N	104°41'44.818"W	0.13	
11335.00	90.770	181.960	7355.31	2634.45	-2636.17	-484.17	40°03'54.258"N	104°41'44.890"W	0.64	
11430.00	89.540	179.960	7355.06	2729.43	-2731.15	-485.76	40°03'53.319"N	104°41'44.911"W	2.47	
11620.00	88.460	179.780	7358.37	2919.39	-2921.12	-485.33	40°03'51.442"N	104°41'44.905"W	0.58	
11809.00	90.370	180.290	7360.30	3108.37	-3110.10	-485.45	40°03'49.574"N	104°41'44.907"W	1.05	
11904.00	90.890	180.040	7359.26	3203.37	-3205.10	-485.72	40°03'48.636"N	104°41'44.910"W	0.61	
11999.00	91.320	179.820	7357.42	3298.35	-3300.08	-485.61	40°03'47.697"N	104°41'44.909"W	0.51	
12093.00	91.140	179.900	7355.41	3392.33	-3394.06	-485.38	40°03'46.768"N	104°41'44.906"W	0.21	
12188.00	91.600	179.920	7353.14	3487.30	-3489.03	-485.23	40°03'45.830"N	104°41'44.904"W	0.48	
12282.00	91.390	178.270	7350.68	3581.26	-3582.98	-483.74	40°03'44.901"N	104°41'44.885"W	1.77	
12377.00	90.620	178.740	7349.02	3676.22	-3677.93	-481.27	40°03'43.963"N	104°41'44.853"W	0.95	
12472.00	91.540	179.150	7347.23	3771.19	-3772.90	-479.52	40°03'43.024"N	104°41'44.830"W	1.06	
12567.00	90.650	178.540	7345.41	3866.16	-3867.86	-477.60	40°03'42.086"N	104°41'44.806"W	1.14	
12662.00	91.360	178.390	7343.74	3961.11	-3962.81	-475.06	40°03'41.148"N	104°41'44.773"W	0.76	

REFERENCE WELLPATH IDENTIFICATION			
Operator	KERR-MCGEE OIL & GAS ONSHORE LP (WA)	Slot	SLOT#11 GREEN 1C-8HZ (357'FNL & 898'FWL, SEC.08)
Area	COLORADO	Well	GREEN 1C-8HZ
Field	WELD COUNTY (UTM/TRUE NORTH)	Wellbore	GREEN 1C-8HZ AWB <13608>
Facility	SEC.08-T1N-R65W		

WELLPATH DATA (144 stations) † = interpolated/extrapolated station										
MD [ft]	Inclination [°]	Azimuth [°]	TVD [ft]	Vert Sect [ft]	North [ft]	East [ft]	Latitude	Longitude	DLS [°/100ft]	Comments
12757.00	89.510	176.960	7343.02	4056.04	-4057.72	-471.20	40°03'40.210"N	104°41'44.723"W	2.46	
12851.00	89.380	179.260	7343.93	4149.99	-4151.66	-468.10	40°03'39.281"N	104°41'44.683"W	2.45	
12946.00	90.370	179.530	7344.14	4244.98	-4246.66	-467.10	40°03'38.343"N	104°41'44.670"W	1.08	
13040.00	91.020	178.970	7343.00	4338.97	-4340.64	-465.87	40°03'37.414"N	104°41'44.655"W	0.91	
13135.00	91.230	178.320	7341.14	4433.93	-4435.59	-463.62	40°03'36.475"N	104°41'44.626"W	0.72	
13324.00	88.710	177.010	7341.23	4622.78	-4624.42	-455.92	40°03'34.609"N	104°41'44.527"W	1.50	
13557.00	90.590	176.680	7342.66	4855.46	-4857.05	-443.10	40°03'32.311"N	104°41'44.362"W	0.82	
13577.00†	90.590	176.680	7342.45	4875.43	-4877.02	-441.94	40°03'32.113"N	104°41'44.347"W	0.00	LAST BHI MWD+IFR SURVEYS
13608.00	90.590	176.680	7342.13	4906.38	-4907.96	-440.15	40°03'31.807"N	104°41'44.324"W	0.00	PROJECTION TO BIT

HOLE & CASING SECTIONS - Ref Wellbore: GREEN 1C-8HZ AWB <13608> Ref Wellpath: GREEN 1C-8HZ AWP									
String/Diameter	Start MD [ft]	End MD [ft]	Interval [ft]	Start TVD [ft]	End TVD [ft]	Start N/S [ft]	Start E/W [ft]	End N/S [ft]	End E/W [ft]
13.5in Open Hole	16.00	1584.00	1568.00	16.00	1583.95	0.00	0.00	0.29	0.78
9.625in Casing Surface	16.00	1574.00	1558.00	16.00	1573.95	0.00	0.00	0.30	0.72
7.875in Open Hole	1584.00	13608.00	12024.00	1583.95	7342.13	0.29	0.78	-4907.96	-440.15

TARGETS								
Name	TVD [ft]	North [ft]	East [ft]	Grid East [US ft]	Grid North [US ft]	Latitude	Longitude	Shape
SEC.05-T1N-R65W SECTION LINES	7137.00	724.62	2025.09	1728023.23	14553942.30	40°04'27.469"N	104°41'12.613"W	polygon
SEC.08-T1N-R65W SECTION LINES	7137.00	-0.71	-29.93	1725971.51	14553210.20	40°04'20.302"N	104°41'39.048"W	polygon
GREEN 1C-8HZ BHL ON PLAT REV-1 (1'FSL & 360'FWL, SEC.08)	7352.00	-4934.01	-471.13	1725547.44	14548277.35	40°03'31.550"N	104°41'44.722"W	point
GREEN 1C-8HZ LANDBOX	7352.00	0.00	0.00	1726001.43	14553211.01	40°04'20.309"N	104°41'38.663"W	polygon

WELLPATH COMPOSITION - Ref Wellbore: GREEN 1C-8HZ AWB <13608> Ref Wellpath: GREEN 1C-8HZ AWP									
Start MD [ft]	End MD [ft]	Positional Uncertainty Model			Log Name/Comment		Wellbore		
16.00	1534.00	Custom APC ISCWSA REV 2 MWD			CATHEDRAL MWD SURVEYS 13.5" <129-1534>		GREEN 1C-8HZ AWB <13608>		
1534.00	13557.00	Custom APC ISCWSA REV 2 MWD+IFR1+SC (approximation)			BHI MWD+IFR SURVEYS 7.875" <1667-13557>		GREEN 1C-8HZ AWB <13608>		
13557.00	13608.00	Blind Drilling (std)			Projection to bit		GREEN 1C-8HZ AWB <13608>		

REFERENCE WELLPATH IDENTIFICATION			
Operator	KERR-MCGEE OIL & GAS ONSHORE LP (WA)	Slot	SLOT#11 GREEN 1C-8HZ (357'FNL & 898'FWL, SEC.08)
Area	COLORADO	Well	GREEN 1C-8HZ
Field	WELD COUNTY (UTM/TRUE NORTH)	Wellbore	GREEN 1C-8HZ AWB <13608>
Facility	SEC.08-T1N-R65W		

WELLPATH COMMENTS				
MD [ft]	Inclination [°]	Azimuth [°]	TVD [ft]	Comment
129.00	0.400	308.800	129.00	BEGIN MWD SURVEYS
1534.00	0.200	90.800	1533.95	TIE-ONTO MWD SURVEYS
1667.00	0.640	94.190	1666.95	BEGIN BHI MWD+IFR SURVEYS
7239.00	28.447	176.747	6972.72	SSPG
7275.00	31.668	175.222	7003.90	NBRR
7408.00	42.679	178.764	7108.80	N470_B_CK
7499.00	49.001	183.507	7172.33	N700_C_CK
7843.00	77.876	180.394	7319.92	FRHS
7978.00	83.947	179.671	7342.80	CDLL
8045.00	89.040	179.550	7347.06	LANDING POINT
13577.00	90.590	176.680	7342.45	LAST BHI MWD+IFR SURVEYS
13608.00	90.590	176.680	7342.13	PROJECTION TO BIT