

# EXTRACTION OIL & GAS

Location: COLORADO Slot: SLOT#10 VARRA #10(1511'FSL & 786'FWL,SEC.05)  
Field: WELD COUNTY (NAD83/TRUE NORTH) Well: VARRA #10  
Facility: SEC.05-T06N-R67W Wellbore: VARRA #10 PWB

Plot reference wellpath is VARRA #10 (REV-B.0) PWP

True vertical depths are referenced to SAVANNA 802 (RKB)	Grid System: NAD83 / Lambert Colorado SP, Northern Zone (501), US feet
Measured depths are referenced to SAVANNA 802 (RKB)	North Reference: True north
SAVANNA 802 (RKB) to Mean Sea Level: 4889 feet	Scale: True distance
Mean Sea Level to Mud line (At Slot: SLOT#10 VARRA #10(1511'FSL & 786'FWL,SEC.05)): 0 feet	Depths are in feet
Coordinates are in feet referenced to Slot	Created by: ingmjamm on 7/31/2015

## Location Information

Facility Name				Grid East (US ft)	Grid North (US ft)	Latitude	Longitude
SEC.05-T06N-R67W				3160186.786	1430380.222	40°30'48.118"N	104°55'25.957"W
Slot	Local N (ft)	Local E (ft)	Grid East (US ft)	Grid North (US ft)	Latitude	Longitude	
SLOT#10 VARRA #10(1511'FSL & 786'FWL,SEC.05)	-233.97	-1.70	3160186.607	1430146.250	40°30'45.806"N	104°55'25.979"W	
SAVANNA 802 (RKB) to Mud line (At Slot: SLOT#10 VARRA #10(1511'FSL & 786'FWL,SEC.05))						4889ft	
Mean Sea Level to Mud line (At Slot: SLOT#10 VARRA #10(1511'FSL & 786'FWL,SEC.05))						0ft	
SAVANNA 802 (RKB) to Mean Sea Level						4889ft	

## Targets

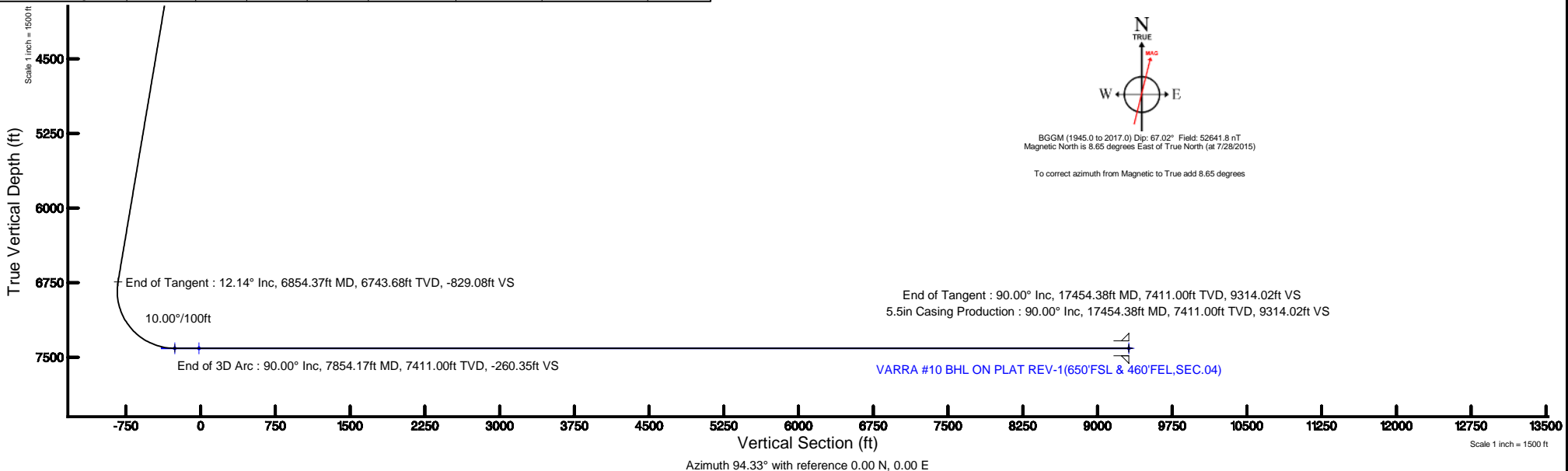
Name	MD (ft)	TVD (ft)	Local N (ft)	Local E (ft)	Grid East (US ft)	Grid North (US ft)	Latitude	Longitude
VARRA PAD SECTION 04		-9.00	233.93	1.68	3160186.77	1430380.18	40°30'48.118"N	104°55'25.957"W
VARRA PAD SECTION 05		-9.00	233.93	1.68	3160186.77	1430380.18	40°30'48.118"N	104°55'25.957"W
VARRA #10 BHL ON PLAT REV-1(650'FSL & 460'FEL,SEC.04)	17454.38	7411.00	-703.90	9287.38	3169478.04	1429502.73	40°30'38.833"N	104°53'25.739"W
VARRA #10 LANDING POINT	7854.17	7411.00	-682.33	-312.81	3159878.25	1429461.93	40°30'39.064"N	104°55'30.029"W
VARRA PAD SOUTH 1/2 HARDLINE(460'SETBACKS)		7411.00	233.93	1.68	3160186.77	1430380.18	40°30'48.118"N	104°55'25.957"W

## Survey Program

Start MD (ft)	End MD (ft)	Tool	Model	Log Name/Comment	Wellbore
15.00	17454.38	NaviTrak	NaviTrak (Standard)		VARRA #10 PWB

## Well Profile Data

Design Comment	MD (ft)	Inc (°)	Az (°)	TVD (ft)	Local N (ft)	Local E (ft)	DLS (°/100ft)	VS (ft)
Tie On	15.00	0.000	235.630	15.00	0.00	0.00	0.00	0.00
End of Tangent	1500.00	0.000	235.630	1500.00	0.00	0.00	0.00	0.00
End of Build	2106.97	12.139	235.630	2102.44	-36.16	-52.88	2.00	-49.99
End of Tangent	6854.37	12.139	235.630	6743.68	-599.76	-876.91	0.00	-829.08
End of 3D Arc	7854.17	90.000	90.129	7411.00	-682.33	-312.81	10.00	-260.35
End of Tangent	17454.38	90.000	90.129	7411.00	-703.90	9287.38	0.00	9314.02





# Planned Wellpath Report

VARRA #10 (REV-B.0) PWP

Page 1 of 10



## REFERENCE WELLPATH IDENTIFICATION

Operator	EXTRACTION OIL & GAS	Slot	SLOT#10 VARRA #10(1511'FSL & 786'FWL,SEC.05)
Area	COLORADO	Well	VARRA #10
Field	WELD COUNTY (NAD83/TRUE NORTH)	Wellbore	VARRA #10 PWB
Facility	SEC.05-T06N-R67W		

## REPORT SETUP INFORMATION

Projection System	NAD83 / Lambert Colorado SP, Northern Zone (501), US feet	Software System	WellArchitect® 4.1.1
North Reference	True	User	Ingmjmr
Scale	0.999967	Report Generated	7/31/2015 at 4:21:07 PM
Convergence at slot	0.37° East	Database/Source file	Denver/VARRA_#10_PWB.xml

## WELLPATH LOCATION

	Local coordinates		Grid coordinates		Geographic coordinates	
	North[ft]	East[ft]	Easting[US ft]	Northing[US ft]	Latitude	Longitude
Slot Location	-233.97	-1.70	3160186.61	1430146.25	40°30'45.806"N	104°55'25.979"W
Facility Reference Pt			3160186.79	1430380.22	40°30'48.118"N	104°55'25.957"W
Field Reference Pt			3185481.27	1419166.81	40°28'55.560"N	104°49'59.556"W

## WELLPATH DATUM

Calculation method	Minimum curvature	SAVANNA 802 (RKB) to Facility Vertical Datum	4889.00ft
Horizontal Reference Pt	Slot	SAVANNA 802 (RKB) to Mean Sea Level	4889.00ft
Vertical Reference Pt	SAVANNA 802 (RKB)	SAVANNA 802 (RKB) to Mud Line at Slot (SLOT#10 VARRA #10(1511'FSL & 786'FWL,SEC.05))	4889.00ft
MD Reference Pt	SAVANNA 802 (RKB)	Section Origin	N 0.00, E 0.00 ft
Field Vertical Reference	Mean Sea Level	Section Azimuth	94.33°



# Planned Wellpath Report

VARRA #10 (REV-B.0) PWP

Page 2 of 10



## REFERENCE WELLPATH IDENTIFICATION

Operator	EXTRACTION OIL & GAS	Slot	SLOT#10 VARRA #10(1511'FSL & 786'FWL,SEC.05)
Area	COLORADO	Well	VARRA #10
Field	WELD COUNTY (NAD83/TRUE NORTH)	Wellbore	VARRA #10 PWB
Facility	SEC.05-T06N-R67W		

## WELLPATH DATA (181 stations) † = interpolated/extrapolated station

MD [ft]	Inclination [°]	Azimuth [°]	TVD [ft]	Vert Sect [ft]	North [ft]	East [ft]	DLS [°/100ft]	Comments
0.00†	0.000	235.630	0.00	0.00	0.00	0.00	0.00	
15.00	0.000	235.630	15.00	0.00	0.00	0.00	0.00	Tie On
115.00†	0.000	235.630	115.00	0.00	0.00	0.00	0.00	
215.00†	0.000	235.630	215.00	0.00	0.00	0.00	0.00	
315.00†	0.000	235.630	315.00	0.00	0.00	0.00	0.00	
415.00†	0.000	235.630	415.00	0.00	0.00	0.00	0.00	
515.00†	0.000	235.630	515.00	0.00	0.00	0.00	0.00	
615.00†	0.000	235.630	615.00	0.00	0.00	0.00	0.00	
715.00†	0.000	235.630	715.00	0.00	0.00	0.00	0.00	
815.00†	0.000	235.630	815.00	0.00	0.00	0.00	0.00	
915.00†	0.000	235.630	915.00	0.00	0.00	0.00	0.00	
1015.00†	0.000	235.630	1015.00	0.00	0.00	0.00	0.00	
1115.00†	0.000	235.630	1115.00	0.00	0.00	0.00	0.00	
1215.00†	0.000	235.630	1215.00	0.00	0.00	0.00	0.00	
1315.00†	0.000	235.630	1315.00	0.00	0.00	0.00	0.00	
1415.00†	0.000	235.630	1415.00	0.00	0.00	0.00	0.00	
1500.00	0.000	235.630	1500.00	0.00	0.00	0.00	0.00	End of Tangent
1515.00†	0.300	235.630	1515.00	-0.03	-0.02	-0.03	2.00	
1615.00†	2.300	235.630	1614.97	-1.80	-1.30	-1.90	2.00	
1715.00†	4.300	235.630	1714.80	-6.29	-4.55	-6.66	2.00	
1815.00†	6.300	235.630	1814.37	-13.50	-9.77	-14.28	2.00	
1915.00†	8.300	235.630	1913.55	-23.42	-16.94	-24.77	2.00	
2015.00†	10.300	235.630	2012.23	-36.03	-26.06	-38.11	2.00	
2106.97	12.139	235.630	2102.44	-49.99	-36.16	-52.88	2.00	End of Build
2115.00†	12.139	235.630	2110.29	-51.31	-37.12	-54.27	0.00	
2215.00†	12.139	235.630	2208.05	-67.72	-48.99	-71.63	0.00	
2315.00†	12.139	235.630	2305.82	-84.13	-60.86	-88.98	0.00	
2415.00†	12.139	235.630	2403.58	-100.54	-72.73	-106.34	0.00	
2515.00†	12.139	235.630	2501.35	-116.95	-84.60	-123.70	0.00	
2615.00†	12.139	235.630	2599.11	-133.36	-96.48	-141.06	0.00	



# Planned Wellpath Report

VARRA #10 (REV-B.0) PWP

Page 3 of 10



## REFERENCE WELLPATH IDENTIFICATION

Operator	EXTRACTION OIL & GAS	Slot	SLOT#10 VARRA #10(1511'FSL & 786'FWL,SEC.05)
Area	COLORADO	Well	VARRA #10
Field	WELD COUNTY (NAD83/TRUE NORTH)	Wellbore	VARRA #10 PWB
Facility	SEC.05-T06N-R67W		

## WELLPATH DATA (181 stations) † = interpolated/extrapolated station

MD [ft]	Inclination [°]	Azimuth [°]	TVD [ft]	Vert Sect [ft]	North [ft]	East [ft]	DLS [°/100ft]	Comments
2715.00†	12.139	235.630	2696.87	-149.77	-108.35	-158.42	0.00	
2815.00†	12.139	235.630	2794.64	-166.18	-120.22	-175.77	0.00	
2915.00†	12.139	235.630	2892.40	-182.60	-132.09	-193.13	0.00	
3015.00†	12.139	235.630	2990.16	-199.01	-143.96	-210.49	0.00	
3115.00†	12.139	235.630	3087.93	-215.42	-155.83	-227.85	0.00	
3215.00†	12.139	235.630	3185.69	-231.83	-167.71	-245.20	0.00	
3315.00†	12.139	235.630	3283.46	-248.24	-179.58	-262.56	0.00	
3415.00†	12.139	235.630	3381.22	-264.65	-191.45	-279.92	0.00	
3515.00†	12.139	235.630	3478.98	-281.06	-203.32	-297.28	0.00	
3615.00†	12.139	235.630	3576.75	-297.47	-215.19	-314.63	0.00	
3715.00†	12.139	235.630	3674.51	-313.88	-227.06	-331.99	0.00	
3815.00†	12.139	235.630	3772.28	-330.29	-238.94	-349.35	0.00	
3915.00†	12.139	235.630	3870.04	-346.70	-250.81	-366.71	0.00	
4015.00†	12.139	235.630	3967.80	-363.11	-262.68	-384.06	0.00	
4115.00†	12.139	235.630	4065.57	-379.53	-274.55	-401.42	0.00	
4215.00†	12.139	235.630	4163.33	-395.94	-286.42	-418.78	0.00	
4315.00†	12.139	235.630	4261.09	-412.35	-298.29	-436.14	0.00	
4415.00†	12.139	235.630	4358.86	-428.76	-310.17	-453.49	0.00	
4515.00†	12.139	235.630	4456.62	-445.17	-322.04	-470.85	0.00	
4615.00†	12.139	235.630	4554.39	-461.58	-333.91	-488.21	0.00	
4715.00†	12.139	235.630	4652.15	-477.99	-345.78	-505.57	0.00	
4815.00†	12.139	235.630	4749.91	-494.40	-357.65	-522.93	0.00	
4915.00†	12.139	235.630	4847.68	-510.81	-369.52	-540.28	0.00	
5015.00†	12.139	235.630	4945.44	-527.22	-381.40	-557.64	0.00	
5115.00†	12.139	235.630	5043.21	-543.63	-393.27	-575.00	0.00	
5215.00†	12.139	235.630	5140.97	-560.04	-405.14	-592.36	0.00	
5315.00†	12.139	235.630	5238.73	-576.45	-417.01	-609.71	0.00	
5415.00†	12.139	235.630	5336.50	-592.87	-428.88	-627.07	0.00	
5515.00†	12.139	235.630	5434.26	-609.28	-440.75	-644.43	0.00	
5615.00†	12.139	235.630	5532.03	-625.69	-452.63	-661.79	0.00	



# Planned Wellpath Report

VARRA #10 (REV-B.0) PWP

Page 4 of 10



## REFERENCE WELLPATH IDENTIFICATION

Operator	EXTRACTION OIL & GAS	Slot	SLOT#10 VARRA #10(1511'FSL & 786'FWL,SEC.05)
Area	COLORADO	Well	VARRA #10
Field	WELD COUNTY (NAD83/TRUE NORTH)	Wellbore	VARRA #10 PWB
Facility	SEC.05-T06N-R67W		

## WELLPATH DATA (181 stations) † = interpolated/extrapolated station

MD [ft]	Inclination [°]	Azimuth [°]	TVD [ft]	Vert Sect [ft]	North [ft]	East [ft]	DLS [°/100ft]	Comments
5715.00†	12.139	235.630	5629.79	-642.10	-464.50	-679.14	0.00	
5815.00†	12.139	235.630	5727.55	-658.51	-476.37	-696.50	0.00	
5915.00†	12.139	235.630	5825.32	-674.92	-488.24	-713.86	0.00	
6015.00†	12.139	235.630	5923.08	-691.33	-500.11	-731.22	0.00	
6115.00†	12.139	235.630	6020.84	-707.74	-511.98	-748.57	0.00	
6215.00†	12.139	235.630	6118.61	-724.15	-523.86	-765.93	0.00	
6315.00†	12.139	235.630	6216.37	-740.56	-535.73	-783.29	0.00	
6415.00†	12.139	235.630	6314.14	-756.97	-547.60	-800.65	0.00	
6515.00†	12.139	235.630	6411.90	-773.38	-559.47	-818.00	0.00	
6615.00†	12.139	235.630	6509.66	-789.79	-571.34	-835.36	0.00	
6715.00†	12.139	235.630	6607.43	-806.21	-583.21	-852.72	0.00	
6815.00†	12.139	235.630	6705.19	-822.62	-595.09	-870.08	0.00	
6854.37	12.139	235.630	6743.68	-829.08	-599.76	-876.91	0.00	End of Tangent
6915.00†	7.970	209.645	6803.40	-835.86	-607.02	-884.26	10.00	
7015.00†	9.223	138.742	6902.52	-833.09	-619.10	-882.40	10.00	
7115.00†	17.483	112.885	6999.81	-813.07	-630.99	-863.23	10.00	
7215.00†	26.929	104.006	7092.31	-776.41	-642.35	-827.32	10.00	
7315.00†	36.656	99.551	7177.22	-724.23	-652.81	-775.79	10.00	
7415.00†	46.487	96.771	7251.95	-658.11	-662.06	-710.17	10.00	
7515.00†	56.365	94.778	7314.23	-580.05	-669.82	-632.48	10.00	
7615.00†	66.269	93.199	7362.16	-492.44	-675.86	-545.08	10.00	
7715.00†	76.187	91.845	7394.30	-397.93	-679.98	-450.61	10.00	
7815.00†	86.112	90.603	7409.67	-299.39	-682.08	-351.94	10.00	
7854.17	90.000	90.129	7411.00 <sup>1</sup>	-260.35	-682.33	-312.81	10.00	End of 3D Arc
7915.00†	90.000	90.129	7411.00	-199.68	-682.46	-251.98	0.00	
8015.00†	90.000	90.129	7411.00	-99.95	-682.69	-151.98	0.00	
8115.00†	90.000	90.129	7411.00	-0.22	-682.91	-51.98	0.00	
8215.00†	90.000	90.129	7411.00	99.51	-683.14	48.02	0.00	
8315.00†	90.000	90.129	7411.00	199.24	-683.36	148.02	0.00	
8415.00†	90.000	90.129	7411.00	298.97	-683.59	248.02	0.00	



# Planned Wellpath Report

VARRA #10 (REV-B.0) PWP

Page 5 of 10



## REFERENCE WELLPATH IDENTIFICATION

Operator	EXTRACTION OIL & GAS	Slot	SLOT#10 VARRA #10(1511'FSL & 786'FWL,SEC.05)
Area	COLORADO	Well	VARRA #10
Field	WELD COUNTY (NAD83/TRUE NORTH)	Wellbore	VARRA #10 PWB
Facility	SEC.05-T06N-R67W		

## WELLPATH DATA (181 stations) † = interpolated/extrapolated station

MD [ft]	Inclination [°]	Azimuth [°]	TVD [ft]	Vert Sect [ft]	North [ft]	East [ft]	DLS [°/100ft]	Comments
8515.00†	90.000	90.129	7411.00	398.71	-683.81	348.02	0.00	
8615.00†	90.000	90.129	7411.00	498.44	-684.04	448.02	0.00	
8715.00†	90.000	90.129	7411.00	598.17	-684.26	548.02	0.00	
8815.00†	90.000	90.129	7411.00	697.90	-684.49	648.02	0.00	
8915.00†	90.000	90.129	7411.00	797.63	-684.71	748.02	0.00	
9015.00†	90.000	90.129	7411.00	897.36	-684.94	848.02	0.00	
9115.00†	90.000	90.129	7411.00	997.09	-685.16	948.02	0.00	
9215.00†	90.000	90.129	7411.00	1096.82	-685.38	1048.02	0.00	
9315.00†	90.000	90.129	7411.00	1196.55	-685.61	1148.02	0.00	
9415.00†	90.000	90.129	7411.00	1296.28	-685.83	1248.02	0.00	
9515.00†	90.000	90.129	7411.00	1396.01	-686.06	1348.02	0.00	
9615.00†	90.000	90.129	7411.00	1495.74	-686.28	1448.02	0.00	
9715.00†	90.000	90.129	7411.00	1595.47	-686.51	1548.02	0.00	
9815.00†	90.000	90.129	7411.00	1695.21	-686.73	1648.02	0.00	
9915.00†	90.000	90.129	7411.00	1794.94	-686.96	1748.02	0.00	
10015.00†	90.000	90.129	7411.00	1894.67	-687.18	1848.02	0.00	
10115.00†	90.000	90.129	7411.00	1994.40	-687.41	1948.02	0.00	
10215.00†	90.000	90.129	7411.00	2094.13	-687.63	2048.02	0.00	
10315.00†	90.000	90.129	7411.00	2193.86	-687.86	2148.02	0.00	
10415.00†	90.000	90.129	7411.00	2293.59	-688.08	2248.02	0.00	
10515.00†	90.000	90.129	7411.00	2393.32	-688.31	2348.02	0.00	
10615.00†	90.000	90.129	7411.00	2493.05	-688.53	2448.02	0.00	
10715.00†	90.000	90.129	7411.00	2592.78	-688.75	2548.02	0.00	
10815.00†	90.000	90.129	7411.00	2692.51	-688.98	2648.02	0.00	
10915.00†	90.000	90.129	7411.00	2792.24	-689.20	2748.02	0.00	
11015.00†	90.000	90.129	7411.00	2891.97	-689.43	2848.02	0.00	
11115.00†	90.000	90.129	7411.00	2991.70	-689.65	2948.02	0.00	
11215.00†	90.000	90.129	7411.00	3091.44	-689.88	3048.02	0.00	
11315.00†	90.000	90.129	7411.00	3191.17	-690.10	3148.02	0.00	
11415.00†	90.000	90.129	7411.00	3290.90	-690.33	3248.02	0.00	



# Planned Wellpath Report

VARRA #10 (REV-B.0) PWP

Page 6 of 10



## REFERENCE WELLPATH IDENTIFICATION

Operator	EXTRACTION OIL & GAS	Slot	SLOT#10 VARRA #10(1511'FSL & 786'FWL,SEC.05)
Area	COLORADO	Well	VARRA #10
Field	WELD COUNTY (NAD83/TRUE NORTH)	Wellbore	VARRA #10 PWB
Facility	SEC.05-T06N-R67W		

## WELLPATH DATA (181 stations) † = interpolated/extrapolated station

MD [ft]	Inclination [°]	Azimuth [°]	TVD [ft]	Vert Sect [ft]	North [ft]	East [ft]	DLS [°/100ft]	Comments
11515.00†	90.000	90.129	7411.00	3390.63	-690.55	3348.01	0.00	
11615.00†	90.000	90.129	7411.00	3490.36	-690.78	3448.01	0.00	
11715.00†	90.000	90.129	7411.00	3590.09	-691.00	3548.01	0.00	
11815.00†	90.000	90.129	7411.00	3689.82	-691.23	3648.01	0.00	
11915.00†	90.000	90.129	7411.00	3789.55	-691.45	3748.01	0.00	
12015.00†	90.000	90.129	7411.00	3889.28	-691.68	3848.01	0.00	
12115.00†	90.000	90.129	7411.00	3989.01	-691.90	3948.01	0.00	
12215.00†	90.000	90.129	7411.00	4088.74	-692.13	4048.01	0.00	
12315.00†	90.000	90.129	7411.00	4188.47	-692.35	4148.01	0.00	
12415.00†	90.000	90.129	7411.00	4288.20	-692.57	4248.01	0.00	
12515.00†	90.000	90.129	7411.00	4387.94	-692.80	4348.01	0.00	
12615.00†	90.000	90.129	7411.00	4487.67	-693.02	4448.01	0.00	
12715.00†	90.000	90.129	7411.00	4587.40	-693.25	4548.01	0.00	
12815.00†	90.000	90.129	7411.00	4687.13	-693.47	4648.01	0.00	
12915.00†	90.000	90.129	7411.00	4786.86	-693.70	4748.01	0.00	
13015.00†	90.000	90.129	7411.00	4886.59	-693.92	4848.01	0.00	
13115.00†	90.000	90.129	7411.00	4986.32	-694.15	4948.01	0.00	
13215.00†	90.000	90.129	7411.00	5086.05	-694.37	5048.01	0.00	
13315.00†	90.000	90.129	7411.00	5185.78	-694.60	5148.01	0.00	
13415.00†	90.000	90.129	7411.00	5285.51	-694.82	5248.01	0.00	
13515.00†	90.000	90.129	7411.00	5385.24	-695.05	5348.01	0.00	
13615.00†	90.000	90.129	7411.00	5484.97	-695.27	5448.01	0.00	
13715.00†	90.000	90.129	7411.00	5584.70	-695.50	5548.01	0.00	
13815.00†	90.000	90.129	7411.00	5684.44	-695.72	5648.01	0.00	
13915.00†	90.000	90.129	7411.00	5784.17	-695.94	5748.01	0.00	
14015.00†	90.000	90.129	7411.00	5883.90	-696.17	5848.01	0.00	
14115.00†	90.000	90.129	7411.00	5983.63	-696.39	5948.01	0.00	
14215.00†	90.000	90.129	7411.00	6083.36	-696.62	6048.01	0.00	
14315.00†	90.000	90.129	7411.00	6183.09	-696.84	6148.01	0.00	
14415.00†	90.000	90.129	7411.00	6282.82	-697.07	6248.01	0.00	





# Planned Wellpath Report

VARRA #10 (REV-B.0) PWP

Page 7 of 10



## REFERENCE WELLPATH IDENTIFICATION

Operator	EXTRACTION OIL & GAS	Slot	SLOT#10 VARRA #10(1511'FSL & 786'FWL,SEC.05)
Area	COLORADO	Well	VARRA #10
Field	WELD COUNTY (NAD83/TRUE NORTH)	Wellbore	VARRA #10 PWB
Facility	SEC.05-T06N-R67W		

## WELLPATH DATA (181 stations) † = interpolated/extrapolated station

MD [ft]	Inclination [°]	Azimuth [°]	TVD [ft]	Vert Sect [ft]	North [ft]	East [ft]	DLS [°/100ft]	Comments
14515.00†	90.000	90.129	7411.00	6382.55	-697.29	6348.01	0.00	
14615.00†	90.000	90.129	7411.00	6482.28	-697.52	6448.01	0.00	
14715.00†	90.000	90.129	7411.00	6582.01	-697.74	6548.01	0.00	
14815.00†	90.000	90.129	7411.00	6681.74	-697.97	6648.01	0.00	
14915.00†	90.000	90.129	7411.00	6781.47	-698.19	6748.01	0.00	
15015.00†	90.000	90.129	7411.00	6881.20	-698.42	6848.01	0.00	
15115.00†	90.000	90.129	7411.00	6980.93	-698.64	6948.01	0.00	
15215.00†	90.000	90.129	7411.00	7080.67	-698.87	7048.01	0.00	
15315.00†	90.000	90.129	7411.00	7180.40	-699.09	7148.01	0.00	
15415.00†	90.000	90.129	7411.00	7280.13	-699.31	7248.00	0.00	
15515.00†	90.000	90.129	7411.00	7379.86	-699.54	7348.00	0.00	
15615.00†	90.000	90.129	7411.00	7479.59	-699.76	7448.00	0.00	
15715.00†	90.000	90.129	7411.00	7579.32	-699.99	7548.00	0.00	
15815.00†	90.000	90.129	7411.00	7679.05	-700.21	7648.00	0.00	
15915.00†	90.000	90.129	7411.00	7778.78	-700.44	7748.00	0.00	
16015.00†	90.000	90.129	7411.00	7878.51	-700.66	7848.00	0.00	
16115.00†	90.000	90.129	7411.00	7978.24	-700.89	7948.00	0.00	
16215.00†	90.000	90.129	7411.00	8077.97	-701.11	8048.00	0.00	
16315.00†	90.000	90.129	7411.00	8177.70	-701.34	8148.00	0.00	
16415.00†	90.000	90.129	7411.00	8277.43	-701.56	8248.00	0.00	
16515.00†	90.000	90.129	7411.00	8377.17	-701.79	8348.00	0.00	
16615.00†	90.000	90.129	7411.00	8476.90	-702.01	8448.00	0.00	
16715.00†	90.000	90.129	7411.00	8576.63	-702.24	8548.00	0.00	
16815.00†	90.000	90.129	7411.00	8676.36	-702.46	8648.00	0.00	
16915.00†	90.000	90.129	7411.00	8776.09	-702.68	8748.00	0.00	
17015.00†	90.000	90.129	7411.00	8875.82	-702.91	8848.00	0.00	
17115.00†	90.000	90.129	7411.00	8975.55	-703.13	8948.00	0.00	
17215.00†	90.000	90.129	7411.00	9075.28	-703.36	9048.00	0.00	
17315.00†	90.000	90.129	7411.00	9175.01	-703.58	9148.00	0.00	
17415.00†	90.000	90.129	7411.00	9274.74	-703.81	9248.00	0.00	





# Planned Wellpath Report

VARRA #10 (REV-B.0) PWP

Page 8 of 10



## REFERENCE WELLPATH IDENTIFICATION

Operator	EXTRACTION OIL & GAS	Slot	SLOT#10 VARRA #10(1511'FSL & 786'FWL,SEC.05)
Area	COLORADO	Well	VARRA #10
Field	WELD COUNTY (NAD83/TRUE NORTH)	Wellbore	VARRA #10 PWB
Facility	SEC.05-T06N-R67W		

## WELLPATH DATA (181 stations)

MD [ft]	Inclination [°]	Azimuth [°]	TVD [ft]	Vert Sect [ft]	North [ft]	East [ft]	DLS [°/100ft]	Comments
17454.38	90.000	90.129	7411.00 <sup>2</sup>	9314.02	-703.90	9287.38	0.00	End of Tangent

## HOLE & CASING SECTIONS - Ref Wellbore: VARRA #10 PWB Ref Wellpath: VARRA #10 (REV-B.0) PWP

String/Diameter	Start MD [ft]	End MD [ft]	Interval [ft]	Start TVD [ft]	End TVD [ft]	Start N/S [ft]	Start E/W [ft]	End N/S [ft]	End E/W [ft]
7.875in Open Hole	1500.00	17454.38	15954.38	1500.00	7411.00	0.00	0.00	-703.90	9287.38
5.5in Casing Production	15.00	17454.38	17439.38	15.00	7411.00	0.00	0.00	-703.90	9287.38

## TARGETS

Name	MD [ft]	TVD [ft]	North [ft]	East [ft]	Grid East [US ft]	Grid North [US ft]	Latitude	Longitude	Shape
VARRA PAD SECTION 04		-9.00	233.93	1.68	3160186.77	1430380.18	40°30'48.118"N	104°55'25.957"W	polygon
VARRA PAD SECTION 05		-9.00	233.93	1.68	3160186.77	1430380.18	40°30'48.118"N	104°55'25.957"W	polygon
2) VARRA #10 BHL ON PLAT REV-1(650'FSL & 460'FEL,SEC.04)	17454.38	7411.00	-703.90	9287.38	3169478.04	1429502.73	40°30'38.833"N	104°53'25.739"W	point
1) VARRA #10 LANDING POINT	7854.17	7411.00	-682.33	-312.81	3159878.25	1429461.93	40°30'39.064"N	104°55'30.029"W	point
VARRA PAD SOUTH 1/2 HARDLINES(460'SETBACKS)		7411.00	233.93	1.68	3160186.77	1430380.18	40°30'48.118"N	104°55'25.957"W	polygon



# Planned Wellpath Report

VARRA #10 (REV-B.0) PWP

Page 9 of 10



## REFERENCE WELLPATH IDENTIFICATION

Operator	EXTRACTION OIL & GAS	Slot	SLOT#10 VARRA #10(1511'FSL & 786'FWL,SEC.05)
Area	COLORADO	Well	VARRA #10
Field	WELD COUNTY (NAD83/TRUE NORTH)	Wellbore	VARRA #10 PWB
Facility	SEC.05-T06N-R67W		

## SURVEY PROGRAM - Ref Wellbore: VARRA #10 PWB Ref Wellpath: VARRA #10 (REV-B.0) PWP

Start MD [ft]	End MD [ft]	Positional Uncertainty Model	Log Name/Comment	Wellbore
15.00	17454.38	NaviTrak (Standard)		VARRA #10 PWB



# Planned Wellpath Report

VARRA #10 (REV-B.0) PWP

Page 10 of 10



## REFERENCE WELLPATH IDENTIFICATION

Operator	EXTRACTION OIL & GAS	Slot	SLOT#10 VARRA #10(1511'FSL & 786'FWL,SEC.05)
Area	COLORADO	Well	VARRA #10
Field	WELD COUNTY (NAD83/TRUE NORTH)	Wellbore	VARRA #10 PWB
Facility	SEC.05-T06N-R67W		

## DESIGN COMMENTS

MD [ft]	Inclination [°]	Azimuth [°]	TVD [ft]	Comment
15.00	0.000	235.630	15.00	Tie On
1500.00	0.000	235.630	1500.00	End of Tangent
2106.97	12.139	235.630	2102.44	End of Build
6854.37	12.139	235.630	6743.68	End of Tangent
7854.17	90.000	90.129	7411.00	End of 3D Arc
17454.38	90.000	90.129	7411.00	End of Tangent