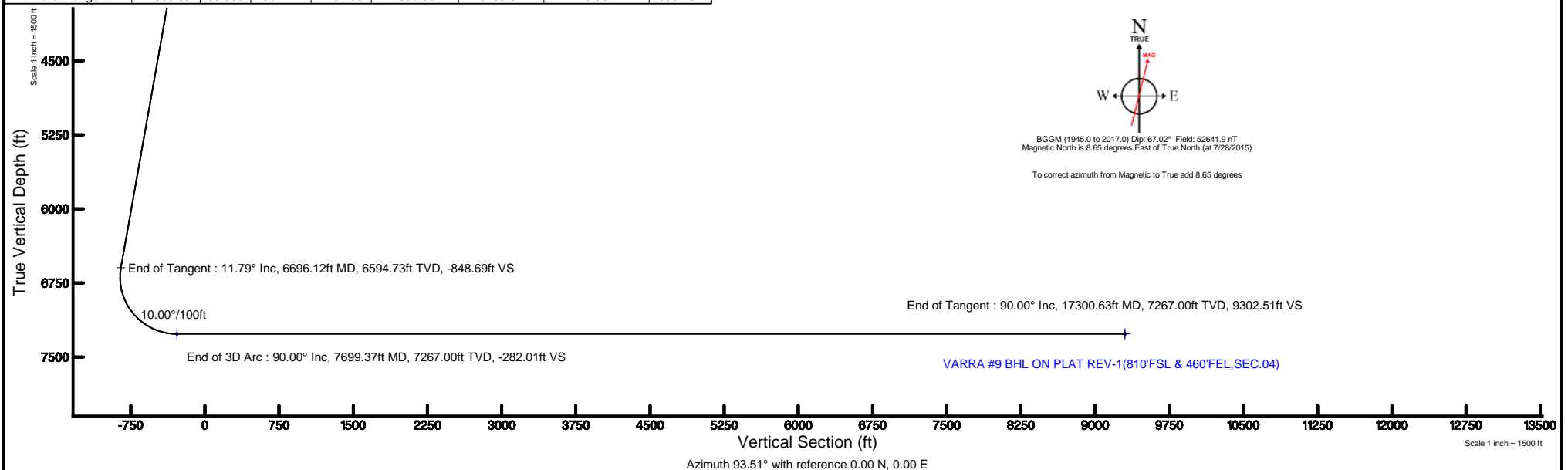
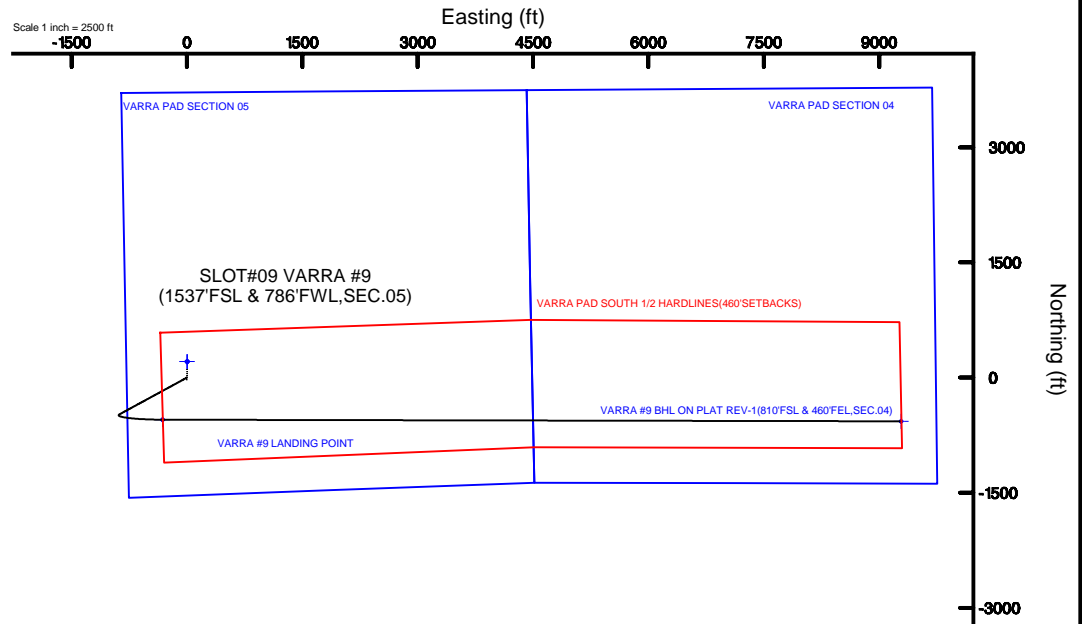


EXTRACTION OIL & GAS								
Location: COLORADO			Slot: SLOT#09 VARRA #9(1537FSL & 786FWLSEC.05)					
Field: WELD COUNTY (NAD83/TRUE NORTH)			Well: VARRA #9					
Facility: SEC.05-T06N-R67W			Wellbore: VARRA #9 PWB					
Plot reference wellpath is VARRA #9 (REV-B.0) PWP								
True vertical depths are referenced to SAVANNA 802 (RKB)					Grid System: NAD83 / Lambert Colorado SP, Northern Zone (501), US feet			
Measured depths are referenced to SAVANNA 802 (RKB)					North Reference: True north			
SAVANNA 802 (RKB) to Mean Sea Level: 4889 feet					Scale: True distance			
Mean Sea Level to Mud line (At Slot: SLOT#09 VARRA #9(1537FSL & 786FWLSEC.05)): 0 feet					Depths are in feet			
Coordinates are in feet referenced to Slot					Created by: ingmjmr on 7/31/2015			
Location Information								
Facility Name					Grid East (US ft)	Grid North (US ft)	Latitude	Longitude
SEC.05-T06N-R67W					3160186.786	1430380.222	40°30'48.118"N	104°55'25.957"W
Slot	Local N (ft)	Local E (ft)	Grid East (US ft)	Grid North (US ft)	Latitude	Longitude		
SLOT#09 VARRA #9(1537FSL & 786FWLSEC.05)	-208.07	-1.39	3160186.748	1430172.158	40°30'46.062"N	104°55'25.975"W		
SAVANNA 802 (RKB) to Mud line (At Slot: SLOT#09 VARRA #9(1537FSL & 786FWLSEC.05))							4889ft	
Mean Sea Level to Mud line (At Slot: SLOT#09 VARRA #9(1537FSL & 786FWLSEC.05))							0ft	
SAVANNA 802 (RKB) to Mean Sea Level							-4889ft	
Targets								
Name	MD (ft)	TVD (ft)	Local N (ft)	Local E (ft)	Grid East (US ft)	Grid North (US ft)	Latitude	Longitude
VARRA PAD SECTION 04		-6.00	208.03	1.37	3160186.77	1430380.18	40°30'48.118"N	104°55'25.957"W
VARRA PAD SECTION 05		-6.00	208.03	1.37	3160186.77	1430380.18	40°30'48.118"N	104°55'25.957"W
VARRA #9 BHL ON PLAT REV-1(810FSL & 460FELSEC.04)	17300.63	7267.00	-569.50	9285.07	3169475.00	1429663.01	40°30'40.417"N	104°53'25.764"W
VARRA #9 LANDING POINT	7699.37	7267.00	-548.30	-316.17	3159874.15	1429621.84	40°30'40.644"N	104°53'30.088"W
VARRA PAD SOUTH 1/2 HARDLINES(460 SETBACKS)		7411.00	208.03	1.37	3160186.77	1430380.18	40°30'48.118"N	104°55'25.957"W
Survey Program								
Start MD (ft)	End MD (ft)	Tool	Model		Log Name/Comment		Wellbore	
15.00	17300.63	NaviTrak	NaviTrak (Standard)				VARRA #9 PWB	
Well Profile Data								
Design Comment	MD (ft)	Inc (°)	Az (°)	TVD (ft)	Local N (ft)	Local E (ft)	DLS (°/100ft)	VS (ft)
Tie On	15.00	0.000	241.402	15.00	0.00	0.00	0.00	0.00
End of Tangent	1500.00	0.000	241.402	1500.00	0.00	0.00	0.00	0.00
End of Build	2089.66	11.793	241.402	2085.51	-28.95	-53.09	2.00	-51.22
End of Tangent	6696.12	11.793	241.402	6594.73	-479.59	-879.70	0.00	-848.69
End of 3D Arc	7699.37	90.000	90.127	7267.00	-548.30	-316.17	10.00	-282.01
End of Tangent	17300.63	90.000	90.127	7267.00	-569.50	9285.07	0.00	9302.51
<div><div><div>Scale 1 inch = 1500 ft</div><div><div>4500</div><div>5250</div><div>6000</div><div>6750</div><div>7500</div></div><div>True Vertical Depth (ft)</div></div><div><div><div>End of Tangent : 11.79° Inc, 6696.12ft MD, 6594.73ft TVD, -848.69ft VS</div><div>10.00°/100ft</div><div>End of 3</div></div></div></div>								





Planned Wellpath Report

VARRA #9 (REV-B.0) PWP

Page 1 of 8



REFERENCE WELLPATH IDENTIFICATION

Operator	EXTRACTION OIL & GAS	Slot	SLOT#09 VARRA #9(1537'FSL & 786'FWL,SEC.05)
Area	COLORADO	Well	VARRA #9
Field	WELD COUNTY (NAD83/TRUE NORTH)	Wellbore	VARRA #9 PWB
Facility	SEC.05-T06N-R67W		

REPORT SETUP INFORMATION

Projection System	NAD83 / Lambert Colorado SP, Northern Zone (501), US feet	Software System	WellArchitect® 4.1.1
North Reference	True	User	Ingmjmr
Scale	0.999967	Report Generated	7/31/2015 at 4:17:34 PM
Convergence at slot	0.37° East	Database/Source file	Denver/VARRA_#9_PWB.xml

WELLPATH LOCATION

	Local coordinates		Grid coordinates		Geographic coordinates	
	North[ft]	East[ft]	Easting[US ft]	Northing[US ft]	Latitude	Longitude
Slot Location	-208.07	-1.39	3160186.75	1430172.16	40°30'46.062"N	104°55'25.975"W
Facility Reference Pt			3160186.79	1430380.22	40°30'48.118"N	104°55'25.957"W
Field Reference Pt			3185481.27	1419166.81	40°28'55.560"N	104°49'59.556"W

WELLPATH DATUM

Calculation method	Minimum curvature	SAVANNA 802 (RKB) to Facility Vertical Datum	4889.00ft
Horizontal Reference Pt	Slot	SAVANNA 802 (RKB) to Mean Sea Level	4889.00ft
Vertical Reference Pt	SAVANNA 802 (RKB)	SAVANNA 802 (RKB) to Mud Line at Slot (SLOT#09 VARRA #9(1537'FSL & 786'FWL,SEC.05))	4889.00ft
MD Reference Pt	SAVANNA 802 (RKB)	Section Origin	N 0.00, E 0.00 ft
Field Vertical Reference	Mean Sea Level	Section Azimuth	93.51°



Planned Wellpath Report

VARRA #9 (REV-B.0) PWP

Page 2 of 8



REFERENCE WELLPATH IDENTIFICATION

Operator	EXTRACTION OIL & GAS	Slot	SLOT#09 VARRA #9(1537'FSL & 786'FWL,SEC.05)
Area	COLORADO	Well	VARRA #9
Field	WELD COUNTY (NAD83/TRUE NORTH)	Wellbore	VARRA #9 PWB
Facility	SEC.05-T06N-R67W		

WELLPATH DATA (179 stations) † = interpolated/extrapolated station

MD [ft]	Inclination [°]	Azimuth [°]	TVD [ft]	Vert Sect [ft]	North [ft]	East [ft]	DLS [°/100ft]	Comments
0.00†	0.000	241.402	0.00	0.00	0.00	0.00	0.00	
15.00	0.000	241.402	15.00	0.00	0.00	0.00	0.00	Tie On
115.00†	0.000	241.402	115.00	0.00	0.00	0.00	0.00	
215.00†	0.000	241.402	215.00	0.00	0.00	0.00	0.00	
315.00†	0.000	241.402	315.00	0.00	0.00	0.00	0.00	
415.00†	0.000	241.402	415.00	0.00	0.00	0.00	0.00	
515.00†	0.000	241.402	515.00	0.00	0.00	0.00	0.00	
615.00†	0.000	241.402	615.00	0.00	0.00	0.00	0.00	
715.00†	0.000	241.402	715.00	0.00	0.00	0.00	0.00	
815.00†	0.000	241.402	815.00	0.00	0.00	0.00	0.00	
915.00†	0.000	241.402	915.00	0.00	0.00	0.00	0.00	
1015.00†	0.000	241.402	1015.00	0.00	0.00	0.00	0.00	
1115.00†	0.000	241.402	1115.00	0.00	0.00	0.00	0.00	
1215.00†	0.000	241.402	1215.00	0.00	0.00	0.00	0.00	
1315.00†	0.000	241.402	1315.00	0.00	0.00	0.00	0.00	
1415.00†	0.000	241.402	1415.00	0.00	0.00	0.00	0.00	
1500.00	0.000	241.402	1500.00	0.00	0.00	0.00	0.00	End of Tangent
1515.00†	0.300	241.402	1515.00	-0.03	-0.02	-0.03	2.00	
1615.00†	2.300	241.402	1614.97	-1.95	-1.10	-2.03	2.00	
1715.00†	4.300	241.402	1714.80	-6.83	-3.86	-7.08	2.00	
1815.00†	6.300	241.402	1814.37	-14.65	-8.28	-15.19	2.00	
1915.00†	8.300	241.402	1913.55	-25.42	-14.36	-26.35	2.00	
2015.00†	10.300	241.402	2012.23	-39.10	-22.10	-40.53	2.00	
2089.66	11.793	241.402	2085.51	-51.22	-28.95	-53.09	2.00	End of Build
2115.00†	11.793	241.402	2110.31	-55.61	-31.42	-57.64	0.00	
2215.00†	11.793	241.402	2208.20	-72.92	-41.21	-75.59	0.00	
2315.00†	11.793	241.402	2306.09	-90.23	-50.99	-93.53	0.00	
2415.00†	11.793	241.402	2403.98	-107.54	-60.77	-111.47	0.00	
2515.00†	11.793	241.402	2501.87	-124.86	-70.56	-129.42	0.00	
2615.00†	11.793	241.402	2599.76	-142.17	-80.34	-147.36	0.00	



Planned Wellpath Report

VARRA #9 (REV-B.0) PWP

Page 3 of 8



REFERENCE WELLPATH IDENTIFICATION

Operator	EXTRACTION OIL & GAS	Slot	SLOT#09 VARRA #9(1537'FSL & 786'FWL,SEC.05)
Area	COLORADO	Well	VARRA #9
Field	WELD COUNTY (NAD83/TRUE NORTH)	Wellbore	VARRA #9 PWB
Facility	SEC.05-T06N-R67W		

WELLPATH DATA (179 stations) † = interpolated/extrapolated station

MD [ft]	Inclination [°]	Azimuth [°]	TVD [ft]	Vert Sect [ft]	North [ft]	East [ft]	DLS [°/100ft]	Comments
2715.00†	11.793	241.402	2697.65	-159.48	-90.12	-165.31	0.00	
2815.00†	11.793	241.402	2795.53	-176.79	-99.91	-183.25	0.00	
2915.00†	11.793	241.402	2893.42	-194.10	-109.69	-201.20	0.00	
3015.00†	11.793	241.402	2991.31	-211.42	-119.47	-219.14	0.00	
3115.00†	11.793	241.402	3089.20	-228.73	-129.25	-237.09	0.00	
3215.00†	11.793	241.402	3187.09	-246.04	-139.04	-255.03	0.00	
3315.00†	11.793	241.402	3284.98	-263.35	-148.82	-272.98	0.00	
3415.00†	11.793	241.402	3382.87	-280.66	-158.60	-290.92	0.00	
3515.00†	11.793	241.402	3480.76	-297.98	-168.39	-308.86	0.00	
3615.00†	11.793	241.402	3578.65	-315.29	-178.17	-326.81	0.00	
3715.00†	11.793	241.402	3676.54	-332.60	-187.95	-344.75	0.00	
3815.00†	11.793	241.402	3774.43	-349.91	-197.74	-362.70	0.00	
3915.00†	11.793	241.402	3872.31	-367.22	-207.52	-380.64	0.00	
4015.00†	11.793	241.402	3970.20	-384.54	-217.30	-398.59	0.00	
4115.00†	11.793	241.402	4068.09	-401.85	-227.08	-416.53	0.00	
4215.00†	11.793	241.402	4165.98	-419.16	-236.87	-434.48	0.00	
4315.00†	11.793	241.402	4263.87	-436.47	-246.65	-452.42	0.00	
4415.00†	11.793	241.402	4361.76	-453.78	-256.43	-470.37	0.00	
4515.00†	11.793	241.402	4459.65	-471.10	-266.22	-488.31	0.00	
4615.00†	11.793	241.402	4557.54	-488.41	-276.00	-506.25	0.00	
4715.00†	11.793	241.402	4655.43	-505.72	-285.78	-524.20	0.00	
4815.00†	11.793	241.402	4753.32	-523.03	-295.57	-542.14	0.00	
4915.00†	11.793	241.402	4851.21	-540.34	-305.35	-560.09	0.00	
5015.00†	11.793	241.402	4949.10	-557.66	-315.13	-578.03	0.00	
5115.00†	11.793	241.402	5046.98	-574.97	-324.91	-595.98	0.00	
5215.00†	11.793	241.402	5144.87	-592.28	-334.70	-613.92	0.00	
5315.00†	11.793	241.402	5242.76	-609.59	-344.48	-631.87	0.00	
5415.00†	11.793	241.402	5340.65	-626.90	-354.26	-649.81	0.00	
5515.00†	11.793	241.402	5438.54	-644.22	-364.05	-667.76	0.00	
5615.00†	11.793	241.402	5536.43	-661.53	-373.83	-685.70	0.00	



Planned Wellpath Report

VARRA #9 (REV-B.0) PWP

Page 4 of 8



REFERENCE WELLPATH IDENTIFICATION

Operator	EXTRACTION OIL & GAS	Slot	SLOT#09 VARRA #9(1537'FSL & 786'FWL,SEC.05)
Area	COLORADO	Well	VARRA #9
Field	WELD COUNTY (NAD83/TRUE NORTH)	Wellbore	VARRA #9 PWB
Facility	SEC.05-T06N-R67W		

WELLPATH DATA (179 stations) † = interpolated/extrapolated station

MD [ft]	Inclination [°]	Azimuth [°]	TVD [ft]	Vert Sect [ft]	North [ft]	East [ft]	DLS [°/100ft]	Comments
5715.00†	11.793	241.402	5634.32	-678.84	-383.61	-703.65	0.00	
5815.00†	11.793	241.402	5732.21	-696.15	-393.40	-721.59	0.00	
5915.00†	11.793	241.402	5830.10	-713.46	-403.18	-739.53	0.00	
6015.00†	11.793	241.402	5927.99	-730.78	-412.96	-757.48	0.00	
6115.00†	11.793	241.402	6025.88	-748.09	-422.74	-775.42	0.00	
6215.00†	11.793	241.402	6123.77	-765.40	-432.53	-793.37	0.00	
6315.00†	11.793	241.402	6221.65	-782.71	-442.31	-811.31	0.00	
6415.00†	11.793	241.402	6319.54	-800.02	-452.09	-829.26	0.00	
6515.00†	11.793	241.402	6417.43	-817.34	-461.88	-847.20	0.00	
6615.00†	11.793	241.402	6515.32	-834.65	-471.66	-865.15	0.00	
6696.12	11.793	241.402	6594.73	-848.69	-479.59	-879.70	0.00	End of Tangent
6715.00†	10.187	236.180	6613.26	-851.65	-481.45	-882.78	10.00	
6815.00†	5.939	164.838	6712.46	-857.04	-491.39	-888.79	10.00	
6915.00†	12.888	116.138	6811.18	-845.06	-501.32	-877.40	10.00	
7015.00†	22.277	104.305	6906.43	-816.08	-510.94	-848.95	10.00	
7115.00†	32.026	99.358	6995.32	-770.97	-519.96	-804.31	10.00	
7215.00†	41.885	96.551	7075.13	-711.10	-528.10	-744.83	10.00	
7315.00†	51.790	94.657	7143.46	-638.30	-535.11	-672.32	10.00	
7415.00†	61.718	93.221	7198.21	-554.78	-540.79	-588.99	10.00	
7515.00†	71.659	92.033	7237.74	-463.07	-544.96	-497.37	10.00	
7615.00†	81.606	90.975	7260.83	-365.96	-547.49	-400.23	10.00	
7699.37	90.000	90.127	7267.00 [†]	-282.01	-548.30	-316.17	10.00	End of 3D Arc
7715.00†	90.000	90.127	7267.00	-266.41	-548.33	-300.54	0.00	
7815.00†	90.000	90.127	7267.00	-166.58	-548.55	-200.54	0.00	
7915.00†	90.000	90.127	7267.00	-66.76	-548.77	-100.54	0.00	
8015.00†	90.000	90.127	7267.00	33.07	-549.00	-0.54	0.00	
8115.00†	90.000	90.127	7267.00	132.90	-549.22	99.46	0.00	
8215.00†	90.000	90.127	7267.00	232.72	-549.44	199.46	0.00	
8315.00†	90.000	90.127	7267.00	332.55	-549.66	299.46	0.00	
8415.00†	90.000	90.127	7267.00	432.37	-549.88	399.46	0.00	



Planned Wellpath Report

VARRA #9 (REV-B.0) PWP

Page 5 of 8



REFERENCE WELLPATH IDENTIFICATION

Operator	EXTRACTION OIL & GAS	Slot	SLOT#09 VARRA #9(1537'FSL & 786'FWL,SEC.05)
Area	COLORADO	Well	VARRA #9
Field	WELD COUNTY (NAD83/TRUE NORTH)	Wellbore	VARRA #9 PWB
Facility	SEC.05-T06N-R67W		

WELLPATH DATA (179 stations) † = interpolated/extrapolated station

MD [ft]	Inclination [°]	Azimuth [°]	TVD [ft]	Vert Sect [ft]	North [ft]	East [ft]	DLS [°/100ft]	Comments
8515.00†	90.000	90.127	7267.00	532.20	-550.10	499.46	0.00	
8615.00†	90.000	90.127	7267.00	632.02	-550.32	599.46	0.00	
8715.00†	90.000	90.127	7267.00	731.85	-550.54	699.46	0.00	
8815.00†	90.000	90.127	7267.00	831.68	-550.76	799.46	0.00	
8915.00†	90.000	90.127	7267.00	931.50	-550.98	899.46	0.00	
9015.00†	90.000	90.127	7267.00	1031.33	-551.20	999.46	0.00	
9115.00†	90.000	90.127	7267.00	1131.15	-551.42	1099.46	0.00	
9215.00†	90.000	90.127	7267.00	1230.98	-551.65	1199.46	0.00	
9315.00†	90.000	90.127	7267.00	1330.80	-551.87	1299.46	0.00	
9415.00†	90.000	90.127	7267.00	1430.63	-552.09	1399.46	0.00	
9515.00†	90.000	90.127	7267.00	1530.46	-552.31	1499.46	0.00	
9615.00†	90.000	90.127	7267.00	1630.28	-552.53	1599.46	0.00	
9715.00†	90.000	90.127	7267.00	1730.11	-552.75	1699.46	0.00	
9815.00†	90.000	90.127	7267.00	1829.93	-552.97	1799.46	0.00	
9915.00†	90.000	90.127	7267.00	1929.76	-553.19	1899.46	0.00	
10015.00†	90.000	90.127	7267.00	2029.58	-553.41	1999.46	0.00	
10115.00†	90.000	90.127	7267.00	2129.41	-553.63	2099.45	0.00	
10215.00†	90.000	90.127	7267.00	2229.24	-553.85	2199.45	0.00	
10315.00†	90.000	90.127	7267.00	2329.06	-554.08	2299.45	0.00	
10415.00†	90.000	90.127	7267.00	2428.89	-554.30	2399.45	0.00	
10515.00†	90.000	90.127	7267.00	2528.71	-554.52	2499.45	0.00	
10615.00†	90.000	90.127	7267.00	2628.54	-554.74	2599.45	0.00	
10715.00†	90.000	90.127	7267.00	2728.36	-554.96	2699.45	0.00	
10815.00†	90.000	90.127	7267.00	2828.19	-555.18	2799.45	0.00	
10915.00†	90.000	90.127	7267.00	2928.02	-555.40	2899.45	0.00	
11015.00†	90.000	90.127	7267.00	3027.84	-555.62	2999.45	0.00	
11115.00†	90.000	90.127	7267.00	3127.67	-555.84	3099.45	0.00	
11215.00†	90.000	90.127	7267.00	3227.49	-556.06	3199.45	0.00	
11315.00†	90.000	90.127	7267.00	3327.32	-556.28	3299.45	0.00	
11415.00†	90.000	90.127	7267.00	3427.14	-556.50	3399.45	0.00	



Planned Wellpath Report

VARRA #9 (REV-B.0) PWP

Page 6 of 8



REFERENCE WELLPATH IDENTIFICATION

Operator	EXTRACTION OIL & GAS	Slot	SLOT#09 VARRA #9(1537'FSL & 786'FWL,SEC.05)
Area	COLORADO	Well	VARRA #9
Field	WELD COUNTY (NAD83/TRUE NORTH)	Wellbore	VARRA #9 PWB
Facility	SEC.05-T06N-R67W		

WELLPATH DATA (179 stations) † = interpolated/extrapolated station

MD [ft]	Inclination [°]	Azimuth [°]	TVD [ft]	Vert Sect [ft]	North [ft]	East [ft]	DLS [°/100ft]	Comments
11515.00†	90.000	90.127	7267.00	3526.97	-556.73	3499.45	0.00	
11615.00†	90.000	90.127	7267.00	3626.80	-556.95	3599.45	0.00	
11715.00†	90.000	90.127	7267.00	3726.62	-557.17	3699.45	0.00	
11815.00†	90.000	90.127	7267.00	3826.45	-557.39	3799.45	0.00	
11915.00†	90.000	90.127	7267.00	3926.27	-557.61	3899.45	0.00	
12015.00†	90.000	90.127	7267.00	4026.10	-557.83	3999.45	0.00	
12115.00†	90.000	90.127	7267.00	4125.92	-558.05	4099.45	0.00	
12215.00†	90.000	90.127	7267.00	4225.75	-558.27	4199.45	0.00	
12315.00†	90.000	90.127	7267.00	4325.58	-558.49	4299.45	0.00	
12415.00†	90.000	90.127	7267.00	4425.40	-558.71	4399.45	0.00	
12515.00†	90.000	90.127	7267.00	4525.23	-558.93	4499.45	0.00	
12615.00†	90.000	90.127	7267.00	4625.05	-559.16	4599.45	0.00	
12715.00†	90.000	90.127	7267.00	4724.88	-559.38	4699.45	0.00	
12815.00†	90.000	90.127	7267.00	4824.70	-559.60	4799.45	0.00	
12915.00†	90.000	90.127	7267.00	4924.53	-559.82	4899.45	0.00	
13015.00†	90.000	90.127	7267.00	5024.36	-560.04	4999.45	0.00	
13115.00†	90.000	90.127	7267.00	5124.18	-560.26	5099.45	0.00	
13215.00†	90.000	90.127	7267.00	5224.01	-560.48	5199.45	0.00	
13315.00†	90.000	90.127	7267.00	5323.83	-560.70	5299.45	0.00	
13415.00†	90.000	90.127	7267.00	5423.66	-560.92	5399.45	0.00	
13515.00†	90.000	90.127	7267.00	5523.48	-561.14	5499.45	0.00	
13615.00†	90.000	90.127	7267.00	5623.31	-561.36	5599.45	0.00	
13715.00†	90.000	90.127	7267.00	5723.14	-561.58	5699.45	0.00	
13815.00†	90.000	90.127	7267.00	5822.96	-561.81	5799.45	0.00	
13915.00†	90.000	90.127	7267.00	5922.79	-562.03	5899.45	0.00	
14015.00†	90.000	90.127	7267.00	6022.61	-562.25	5999.45	0.00	
14115.00†	90.000	90.127	7267.00	6122.44	-562.47	6099.45	0.00	
14215.00†	90.000	90.127	7267.00	6222.26	-562.69	6199.44	0.00	
14315.00†	90.000	90.127	7267.00	6322.09	-562.91	6299.44	0.00	
14415.00†	90.000	90.127	7267.00	6421.92	-563.13	6399.44	0.00	



Planned Wellpath Report

VARRA #9 (REV-B.0) PWP

Page 7 of 8



REFERENCE WELLPATH IDENTIFICATION

Operator	EXTRACTION OIL & GAS	Slot	SLOT#09 VARRA #9(1537'FSL & 786'FWL,SEC.05)
Area	COLORADO	Well	VARRA #9
Field	WELD COUNTY (NAD83/TRUE NORTH)	Wellbore	VARRA #9 PWB
Facility	SEC.05-T06N-R67W		

WELLPATH DATA (179 stations) † = interpolated/extrapolated station

MD [ft]	Inclination [°]	Azimuth [°]	TVD [ft]	Vert Sect [ft]	North [ft]	East [ft]	DLS [°/100ft]	Comments
14515.00†	90.000	90.127	7267.00	6521.74	-563.35	6499.44	0.00	
14615.00†	90.000	90.127	7267.00	6621.57	-563.57	6599.44	0.00	
14715.00†	90.000	90.127	7267.00	6721.39	-563.79	6699.44	0.00	
14815.00†	90.000	90.127	7267.00	6821.22	-564.01	6799.44	0.00	
14915.00†	90.000	90.127	7267.00	6921.04	-564.24	6899.44	0.00	
15015.00†	90.000	90.127	7267.00	7020.87	-564.46	6999.44	0.00	
15115.00†	90.000	90.127	7267.00	7120.70	-564.68	7099.44	0.00	
15215.00†	90.000	90.127	7267.00	7220.52	-564.90	7199.44	0.00	
15315.00†	90.000	90.127	7267.00	7320.35	-565.12	7299.44	0.00	
15415.00†	90.000	90.127	7267.00	7420.17	-565.34	7399.44	0.00	
15515.00†	90.000	90.127	7267.00	7520.00	-565.56	7499.44	0.00	
15615.00†	90.000	90.127	7267.00	7619.82	-565.78	7599.44	0.00	
15715.00†	90.000	90.127	7267.00	7719.65	-566.00	7699.44	0.00	
15815.00†	90.000	90.127	7267.00	7819.48	-566.22	7799.44	0.00	
15915.00†	90.000	90.127	7267.00	7919.30	-566.44	7899.44	0.00	
16015.00†	90.000	90.127	7267.00	8019.13	-566.66	7999.44	0.00	
16115.00†	90.000	90.127	7267.00	8118.95	-566.89	8099.44	0.00	
16215.00†	90.000	90.127	7267.00	8218.78	-567.11	8199.44	0.00	
16315.00†	90.000	90.127	7267.00	8318.60	-567.33	8299.44	0.00	
16415.00†	90.000	90.127	7267.00	8418.43	-567.55	8399.44	0.00	
16515.00†	90.000	90.127	7267.00	8518.26	-567.77	8499.44	0.00	
16615.00†	90.000	90.127	7267.00	8618.08	-567.99	8599.44	0.00	
16715.00†	90.000	90.127	7267.00	8717.91	-568.21	8699.44	0.00	
16815.00†	90.000	90.127	7267.00	8817.73	-568.43	8799.44	0.00	
16915.00†	90.000	90.127	7267.00	8917.56	-568.65	8899.44	0.00	
17015.00†	90.000	90.127	7267.00	9017.38	-568.87	8999.44	0.00	
17115.00†	90.000	90.127	7267.00	9117.21	-569.09	9099.44	0.00	
17215.00†	90.000	90.127	7267.00	9217.04	-569.32	9199.44	0.00	
17300.63	90.000	90.127	7267.00 ²	9302.51	-569.50	9285.07	0.00	End of Tangent

HOLE & CASING SECTIONS - Ref Wellbore: VARRA #9 PWB Ref Wellpath: VARRA #9 (REV-B.0) PWP

String/Diameter	Start MD [ft]	End MD [ft]	Interval [ft]	Start TVD [ft]	End TVD [ft]	Start N/S [ft]	Start E/W [ft]	End N/S [ft]	End E/W [ft]
7.875in Open Hole	1500.00	17300.63	15800.63	1500.00	N/A	0.00	0.00	N/A	N/A
5.5in Casing Production	15.00	17300.63	17285.63	15.00	N/A	0.00	0.00	N/A	N/A

TARGETS

Name	MD [ft]	TVD [ft]	North [ft]	East [ft]	Grid East [US ft]	Grid North [US ft]	Latitude	Longitude	Shape
VARRA PAD SECTION 04		-9.00	208.03	1.37	3160186.77	1430380.18	40°30'48.118"N	104°55'25.957"W	polygon
VARRA PAD SECTION 05		-9.00	208.03	1.37	3160186.77	1430380.18	40°30'48.118"N	104°55'25.957"W	polygon
2) VARRA #9 BHL ON PLAT REV-1(810'FSL &	17300.63	7267.00	-569.50	9285.07	3169475.00	1429663.01	40°30'40.417"N	104°53'25.764"W	point

460'FEL,SEC.04)									
1) VARRA #9 LANDING POINT	7699.37	7267.00	-548.30	-316.17	3159874.15	1429621.84	40°30'40.644"N	104°55'30.068"W	point
VARRA PAD SOUTH 1/2 HARDLINES(460'SETBACKS)		7411.00	208.03	1.37	3160186.77	1430380.18	40°30'48.118"N	104°55'25.957"W	polygon

SURVEY PROGRAM - Ref Wellbore: VARRA #9 PWB					Ref Wellpath: VARRA #9 (REV-B.0) PWP				
Start MD [ft]	End MD [ft]	Positional Uncertainty Model			Log Name/Comment			Wellbore	
15.00	17300.63	NaviTrak (Standard)						VARRA #9 PWB	



Planned Wellpath Report

VARRA #9 (REV-B.0) PWP

Page 8 of 8



REFERENCE WELLPATH IDENTIFICATION

Operator	EXTRACTION OIL & GAS	Slot	SLOT#09 VARRA #9(1537'FSL & 786'FWL,SEC.05)
Area	COLORADO	Well	VARRA #9
Field	WELD COUNTY (NAD83/TRUE NORTH)	Wellbore	VARRA #9 PWB
Facility	SEC.05-T06N-R67W		

DESIGN COMMENTS

MD [ft]	Inclination [°]	Azimuth [°]	TVD [ft]	Comment
15.00	0.000	241.402	15.00	Tie On
1500.00	0.000	241.402	1500.00	End of Tangent
2089.66	11.793	241.402	2085.51	End of Build
6696.12	11.793	241.402	6594.73	End of Tangent
7699.37	90.000	90.127	7267.00	End of 3D Arc
17300.63	90.000	90.127	7267.00	End of Tangent