

EXTRACTION OIL & GAS

Location: COLORADO Slot: SLOT#07 VARRA #7(1589FSL & 788FWL,SEC.05)
Field: WELD COUNTY (NAD83/TRUE NORTH) Well: VARRA #7
Facility: SEC.05-T06N-R67W Wellbore: VARRA #7 PWB

Plot reference wellpath is VARRA #7 (REV-B.0) PWP

True vertical depths are referenced to SAVANNA 802 (RKB)	Grid System: NAD83 / Lambert Colorado SP, Northern Zone (501), US feet
Measured depths are referenced to SAVANNA 802 (RKB)	North Reference: True north
SAVANNA 802 (RKB) to Mean Sea Level: 4889 feet	Scale: True distance
Mean Sea Level to Mud line (At Slot: SLOT#07 VARRA #7(1589FSL & 788FWL,SEC.05)): 0 feet	Depths are in feet
Coordinates are in feet referenced to Slot	Created by: ingejamr on 7/31/2015

Location Information

Facility Name			Grid East (US ft)	Grid North (US ft)	Latitude	Longitude
SEC.05-T06N-R67W			3160186.786	1430380.222	40°30'48.118"N	104°55'25.957"W
Slot	Local N (ft)	Local E (ft)	Grid East (US ft)	Grid North (US ft)	Latitude	Longitude
SLOT#07 VARRA #7(1589FSL & 788FWL,SEC.05)	-155.95	-1.16	3160186.641	1430224.274	40°30'46.577"N	104°55'25.972"W
SAVANNA 802 (RKB) to Mud line (At Slot: SLOT#07 VARRA #7(1589FSL & 788FWL,SEC.05))					4889ft	
Mean Sea Level to Mud line (At Slot: SLOT#07 VARRA #7(1589FSL & 788FWL,SEC.05))					0ft	
SAVANNA 802 (RKB) to Mean Sea Level					4889ft	

Targets

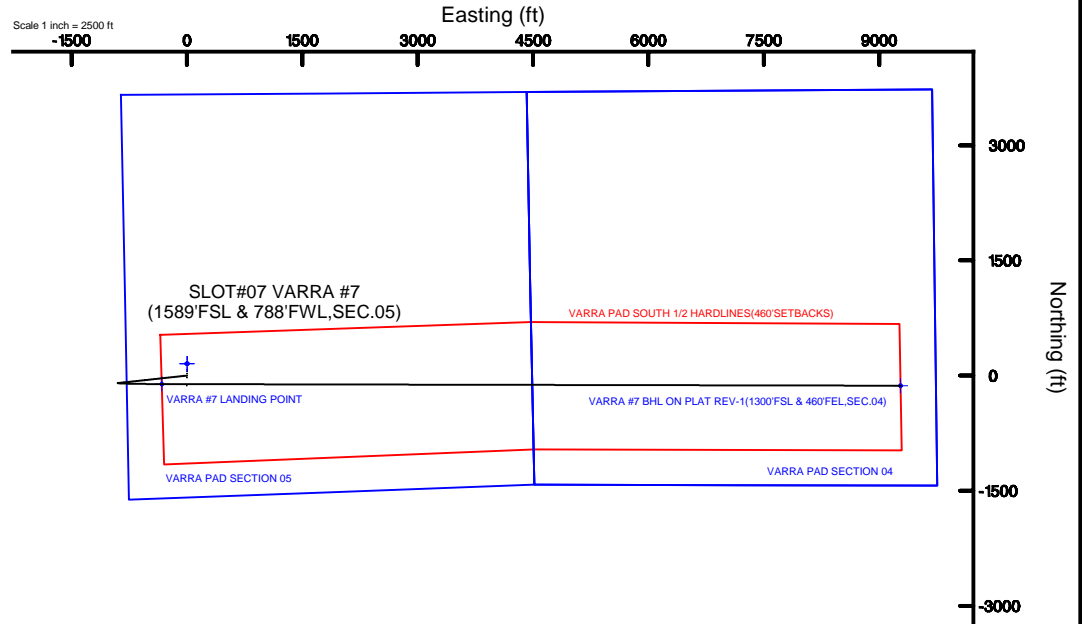
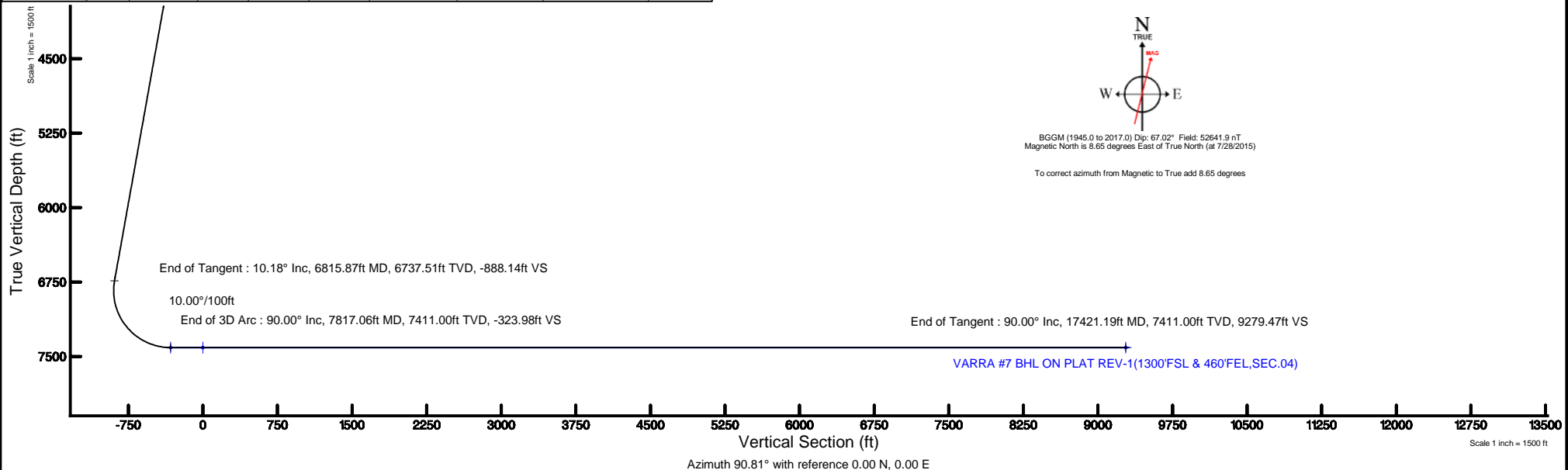
Name	MD (ft)	TVD (ft)	Local N (ft)	Local E (ft)	Grid East (US ft)	Grid North (US ft)	Latitude	Longitude
VARRA PAD SECTION 04		-9.00	155.91	1.14	3160186.77	1430380.18	40°30'48.118"N	104°55'25.957"W
VARRA PAD SECTION 05		-9.00	155.91	1.14	3160186.77	1430380.18	40°30'48.118"N	104°55'25.957"W
VARRA #7 BHL ON PLAT REV-1(1300FSL & 460FEL,SEC.04)	17421.19	7411.00	-131.62	9278.53	3160465.51	1430152.95	40°30'45.259"N	104°53'25.843"W
VARRA #7 LANDING POINT	7817.06	7411.00	-110.41	-325.57	3159861.80	1430111.76	40°30'45.486"N	104°55'30.187"W
VARRA PAD SOUTH 1/2 HARDLINE(460'SETBACKS)		7411.00	155.91	1.14	3160186.77	1430380.18	40°30'48.118"N	104°55'25.957"W

Survey Program

Start MD (ft)	End MD (ft)	Tool	Model	Log Name/Comment	Wellbore
15.00	17421.19	NaviTrak	NaviTrak (Standard)		VARRA #7 PWB

Well Profile Data

Design Comment	MD (ft)	Inc (°)	Az (°)	TVD (ft)	Local N (ft)	Local E (ft)	DLS (°/100ft)	VS (ft)
Tie On	15.00	0.000	263.845	15.00	0.00	0.00	0.00	0.00
End of Tangent	1500.00	0.000	263.845	1500.00	0.00	0.00	0.00	0.00
End of Build	2009.05	10.181	263.845	2006.37	-4.84	-44.85	2.00	-44.77
End of Tangent	6815.87	10.181	263.845	6737.51	-95.93	-889.59	0.00	-888.14
End of 3D Arc	7817.06	90.000	90.127	7411.00	-110.41	-325.57	10.00	-323.98
End of Tangent	17421.19	90.000	90.127	7411.00	-131.62	9278.53	0.00	9279.47



BGGM (1945.0 to 2017.0) Dip: 67.02° Field: 52641.9 nT
Magnetic North is 8.65 degrees East of True North (at 7/28/2015)

To correct azimuth from Magnetic to True add 8.65 degrees



Planned Wellpath Report

VARRA #7 (REV-B.0) PWP

Page 1 of 10



REFERENCE WELLPATH IDENTIFICATION

Operator	EXTRACTION OIL & GAS	Slot	SLOT#07 VARRA #7(1589'FSL & 788'FWL,SEC.05)
Area	COLORADO	Well	VARRA #7
Field	WELD COUNTY (NAD83/TRUE NORTH)	Wellbore	VARRA #7 PWB
Facility	SEC.05-T06N-R67W		

REPORT SETUP INFORMATION

Projection System	NAD83 / Lambert Colorado SP, Northern Zone (501), US feet	Software System	WellArchitect® 4.1.1
North Reference	True	User	Ingmjmr
Scale	0.999967	Report Generated	7/31/2015 at 4:07:20 PM
Convergence at slot	0.37° East	Database/Source file	Denver/VARRA_#7_PWB.xml

WELLPATH LOCATION

	Local coordinates		Grid coordinates		Geographic coordinates	
	North[ft]	East[ft]	Easting[US ft]	Northing[US ft]	Latitude	Longitude
Slot Location	-155.95	-1.16	3160186.64	1430224.27	40°30'46.577"N	104°55'25.972"W
Facility Reference Pt			3160186.79	1430380.22	40°30'48.118"N	104°55'25.957"W
Field Reference Pt			3185481.27	1419166.81	40°28'55.560"N	104°49'59.556"W

WELLPATH DATUM

Calculation method	Minimum curvature	SAVANNA 802 (RKB) to Facility Vertical Datum	4889.00ft
Horizontal Reference Pt	Slot	SAVANNA 802 (RKB) to Mean Sea Level	4889.00ft
Vertical Reference Pt	SAVANNA 802 (RKB)	SAVANNA 802 (RKB) to Mud Line at Slot (SLOT#07 VARRA #7(1589'FSL & 788'FWL,SEC.05))	4889.00ft
MD Reference Pt	SAVANNA 802 (RKB)	Section Origin	N 0.00, E 0.00 ft
Field Vertical Reference	Mean Sea Level	Section Azimuth	90.81°



Planned Wellpath Report

VARRA #7 (REV-B.0) PWP

Page 2 of 10



REFERENCE WELLPATH IDENTIFICATION

Operator	EXTRACTION OIL & GAS	Slot	SLOT#07 VARRA #7(1589'FSL & 788'FWL,SEC.05)
Area	COLORADO	Well	VARRA #7
Field	WELD COUNTY (NAD83/TRUE NORTH)	Wellbore	VARRA #7 PWB
Facility	SEC.05-T06N-R67W		

WELLPATH DATA (181 stations) † = interpolated/extrapolated station

MD [ft]	Inclination [°]	Azimuth [°]	TVD [ft]	Vert Sect [ft]	North [ft]	East [ft]	DLS [°/100ft]	Comments
0.00†	0.000	263.845	0.00	0.00	0.00	0.00	0.00	
15.00	0.000	263.845	15.00	0.00	0.00	0.00	0.00	Tie On
115.00†	0.000	263.845	115.00	0.00	0.00	0.00	0.00	
215.00†	0.000	263.845	215.00	0.00	0.00	0.00	0.00	
315.00†	0.000	263.845	315.00	0.00	0.00	0.00	0.00	
415.00†	0.000	263.845	415.00	0.00	0.00	0.00	0.00	
515.00†	0.000	263.845	515.00	0.00	0.00	0.00	0.00	
615.00†	0.000	263.845	615.00	0.00	0.00	0.00	0.00	
715.00†	0.000	263.845	715.00	0.00	0.00	0.00	0.00	
815.00†	0.000	263.845	815.00	0.00	0.00	0.00	0.00	
915.00†	0.000	263.845	915.00	0.00	0.00	0.00	0.00	
1015.00†	0.000	263.845	1015.00	0.00	0.00	0.00	0.00	
1115.00†	0.000	263.845	1115.00	0.00	0.00	0.00	0.00	
1215.00†	0.000	263.845	1215.00	0.00	0.00	0.00	0.00	
1315.00†	0.000	263.845	1315.00	0.00	0.00	0.00	0.00	
1415.00†	0.000	263.845	1415.00	0.00	0.00	0.00	0.00	
1500.00	0.000	263.845	1500.00	0.00	0.00	0.00	0.00	End of Tangent
1515.00†	0.300	263.845	1515.00	-0.04	0.00	-0.04	2.00	
1615.00†	2.300	263.845	1614.97	-2.29	-0.25	-2.29	2.00	
1715.00†	4.300	263.845	1714.80	-8.00	-0.86	-8.02	2.00	
1815.00†	6.300	263.845	1814.37	-17.17	-1.85	-17.20	2.00	
1915.00†	8.300	263.845	1913.55	-29.78	-3.22	-29.83	2.00	
2009.05	10.181	263.845	2006.37	-44.77	-4.84	-44.85	2.00	End of Build
2015.00†	10.181	263.845	2012.23	-45.82	-4.95	-45.89	0.00	
2115.00†	10.181	263.845	2110.66	-63.36	-6.84	-63.47	0.00	
2215.00†	10.181	263.845	2209.08	-80.91	-8.74	-81.04	0.00	
2315.00†	10.181	263.845	2307.51	-98.45	-10.63	-98.62	0.00	
2415.00†	10.181	263.845	2405.93	-116.00	-12.53	-116.19	0.00	
2515.00†	10.181	263.845	2504.36	-133.54	-14.42	-133.76	0.00	
2615.00†	10.181	263.845	2602.78	-151.09	-16.32	-151.34	0.00	



Planned Wellpath Report

VARRA #7 (REV-B.0) PWP

Page 3 of 10



REFERENCE WELLPATH IDENTIFICATION

Operator	EXTRACTION OIL & GAS	Slot	SLOT#07 VARRA #7(1589'FSL & 788'FWL,SEC.05)
Area	COLORADO	Well	VARRA #7
Field	WELD COUNTY (NAD83/TRUE NORTH)	Wellbore	VARRA #7 PWB
Facility	SEC.05-T06N-R67W		

WELLPATH DATA (181 stations) † = interpolated/extrapolated station

MD [ft]	Inclination [°]	Azimuth [°]	TVD [ft]	Vert Sect [ft]	North [ft]	East [ft]	DLS [°/100ft]	Comments
2715.00†	10.181	263.845	2701.21	-168.64	-18.21	-168.91	0.00	
2815.00†	10.181	263.845	2799.64	-186.18	-20.11	-186.48	0.00	
2915.00†	10.181	263.845	2898.06	-203.73	-22.00	-204.06	0.00	
3015.00†	10.181	263.845	2996.49	-221.27	-23.90	-221.63	0.00	
3115.00†	10.181	263.845	3094.91	-238.82	-25.79	-239.21	0.00	
3215.00†	10.181	263.845	3193.34	-256.36	-27.69	-256.78	0.00	
3315.00†	10.181	263.845	3291.76	-273.91	-29.58	-274.35	0.00	
3415.00†	10.181	263.845	3390.19	-291.45	-31.48	-291.93	0.00	
3515.00†	10.181	263.845	3488.61	-309.00	-33.37	-309.50	0.00	
3615.00†	10.181	263.845	3587.04	-326.54	-35.27	-327.07	0.00	
3715.00†	10.181	263.845	3685.46	-344.09	-37.17	-344.65	0.00	
3815.00†	10.181	263.845	3783.89	-361.63	-39.06	-362.22	0.00	
3915.00†	10.181	263.845	3882.32	-379.18	-40.96	-379.80	0.00	
4015.00†	10.181	263.845	3980.74	-396.72	-42.85	-397.37	0.00	
4115.00†	10.181	263.845	4079.17	-414.27	-44.75	-414.94	0.00	
4215.00†	10.181	263.845	4177.59	-431.81	-46.64	-432.52	0.00	
4315.00†	10.181	263.845	4276.02	-449.36	-48.54	-450.09	0.00	
4415.00†	10.181	263.845	4374.44	-466.90	-50.43	-467.67	0.00	
4515.00†	10.181	263.845	4472.87	-484.45	-52.33	-485.24	0.00	
4615.00†	10.181	263.845	4571.29	-501.99	-54.22	-502.81	0.00	
4715.00†	10.181	263.845	4669.72	-519.54	-56.12	-520.39	0.00	
4815.00†	10.181	263.845	4768.14	-537.08	-58.01	-537.96	0.00	
4915.00†	10.181	263.845	4866.57	-554.63	-59.91	-555.53	0.00	
5015.00†	10.181	263.845	4965.00	-572.17	-61.80	-573.11	0.00	
5115.00†	10.181	263.845	5063.42	-589.72	-63.70	-590.68	0.00	
5215.00†	10.181	263.845	5161.85	-607.26	-65.59	-608.26	0.00	
5315.00†	10.181	263.845	5260.27	-624.81	-67.49	-625.83	0.00	
5415.00†	10.181	263.845	5358.70	-642.35	-69.38	-643.40	0.00	
5515.00†	10.181	263.845	5457.12	-659.90	-71.28	-660.98	0.00	
5615.00†	10.181	263.845	5555.55	-677.44	-73.17	-678.55	0.00	



Planned Wellpath Report

VARRA #7 (REV-B.0) PWP

Page 4 of 10



REFERENCE WELLPATH IDENTIFICATION

Operator	EXTRACTION OIL & GAS	Slot	SLOT#07 VARRA #7(1589'FSL & 788'FWL,SEC.05)
Area	COLORADO	Well	VARRA #7
Field	WELD COUNTY (NAD83/TRUE NORTH)	Wellbore	VARRA #7 PWB
Facility	SEC.05-T06N-R67W		

WELLPATH DATA (181 stations) † = interpolated/extrapolated station

MD [ft]	Inclination [°]	Azimuth [°]	TVD [ft]	Vert Sect [ft]	North [ft]	East [ft]	DLS [°/100ft]	Comments
5715.00†	10.181	263.845	5653.97	-694.99	-75.07	-696.12	0.00	
5815.00†	10.181	263.845	5752.40	-712.54	-76.96	-713.70	0.00	
5915.00†	10.181	263.845	5850.82	-730.08	-78.86	-731.27	0.00	
6015.00†	10.181	263.845	5949.25	-747.63	-80.75	-748.85	0.00	
6115.00†	10.181	263.845	6047.68	-765.17	-82.65	-766.42	0.00	
6215.00†	10.181	263.845	6146.10	-782.72	-84.54	-783.99	0.00	
6315.00†	10.181	263.845	6244.53	-800.26	-86.44	-801.57	0.00	
6415.00†	10.181	263.845	6342.95	-817.81	-88.33	-819.14	0.00	
6515.00†	10.181	263.845	6441.38	-835.35	-90.23	-836.72	0.00	
6615.00†	10.181	263.845	6539.80	-852.90	-92.12	-854.29	0.00	
6715.00†	10.181	263.845	6638.23	-870.44	-94.02	-871.86	0.00	
6815.00†	10.181	263.845	6736.65	-887.99	-95.91	-889.44	0.00	
6815.87	10.181	263.845	6737.51	-888.14	-95.93	-889.59	0.00	End of Tangent
6915.00†	1.144	190.486	6836.10	-897.02	-97.85	-898.50	10.00	
7015.00†	9.858	96.619	6935.60	-888.65	-99.82	-890.16	10.00	
7115.00†	19.825	93.251	7032.14	-863.13	-101.77	-864.66	10.00	
7215.00†	29.814	92.092	7122.79	-821.23	-103.65	-822.78	10.00	
7315.00†	39.808	91.477	7204.79	-764.22	-105.38	-765.80	10.00	
7415.00†	49.804	91.078	7275.65	-693.84	-106.93	-695.43	10.00	
7515.00†	59.801	90.782	7333.22	-612.23	-108.24	-613.83	10.00	
7615.00†	69.798	90.541	7375.75	-521.86	-109.28	-523.47	10.00	
7715.00†	79.796	90.329	7401.94	-425.49	-110.00	-427.09	10.00	
7815.00†	89.794	90.131	7411.00	-326.03	-110.40	-327.63	10.00	
7817.06	90.000	90.127	7411.00 ¹	-323.98	-110.41	-325.57	10.00	End of 3D Arc
7915.00†	90.000	90.127	7411.00	-226.04	-110.62	-227.63	0.00	
8015.00†	90.000	90.127	7411.00	-126.05	-110.84	-127.63	0.00	
8115.00†	90.000	90.127	7411.00	-26.05	-111.06	-27.63	0.00	
8215.00†	90.000	90.127	7411.00	73.94	-111.29	72.37	0.00	
8315.00†	90.000	90.127	7411.00	173.93	-111.51	172.37	0.00	
8415.00†	90.000	90.127	7411.00	273.92	-111.73	272.37	0.00	



Planned Wellpath Report

VARRA #7 (REV-B.0) PWP

Page 5 of 10



REFERENCE WELLPATH IDENTIFICATION

Operator	EXTRACTION OIL & GAS	Slot	SLOT#07 VARRA #7(1589'FSL & 788'FWL,SEC.05)
Area	COLORADO	Well	VARRA #7
Field	WELD COUNTY (NAD83/TRUE NORTH)	Wellbore	VARRA #7 PWB
Facility	SEC.05-T06N-R67W		

WELLPATH DATA (181 stations) † = interpolated/extrapolated station

MD [ft]	Inclination [°]	Azimuth [°]	TVD [ft]	Vert Sect [ft]	North [ft]	East [ft]	DLS [°/100ft]	Comments
8515.00†	90.000	90.127	7411.00	373.92	-111.95	372.37	0.00	
8615.00†	90.000	90.127	7411.00	473.91	-112.17	472.37	0.00	
8715.00†	90.000	90.127	7411.00	573.90	-112.39	572.37	0.00	
8815.00†	90.000	90.127	7411.00	673.90	-112.61	672.37	0.00	
8915.00†	90.000	90.127	7411.00	773.89	-112.83	772.37	0.00	
9015.00†	90.000	90.127	7411.00	873.88	-113.05	872.37	0.00	
9115.00†	90.000	90.127	7411.00	973.87	-113.27	972.37	0.00	
9215.00†	90.000	90.127	7411.00	1073.87	-113.49	1072.36	0.00	
9315.00†	90.000	90.127	7411.00	1173.86	-113.71	1172.36	0.00	
9415.00†	90.000	90.127	7411.00	1273.85	-113.94	1272.36	0.00	
9515.00†	90.000	90.127	7411.00	1373.85	-114.16	1372.36	0.00	
9615.00†	90.000	90.127	7411.00	1473.84	-114.38	1472.36	0.00	
9715.00†	90.000	90.127	7411.00	1573.83	-114.60	1572.36	0.00	
9815.00†	90.000	90.127	7411.00	1673.82	-114.82	1672.36	0.00	
9915.00†	90.000	90.127	7411.00	1773.82	-115.04	1772.36	0.00	
10015.00†	90.000	90.127	7411.00	1873.81	-115.26	1872.36	0.00	
10115.00†	90.000	90.127	7411.00	1973.80	-115.48	1972.36	0.00	
10215.00†	90.000	90.127	7411.00	2073.80	-115.70	2072.36	0.00	
10315.00†	90.000	90.127	7411.00	2173.79	-115.92	2172.36	0.00	
10415.00†	90.000	90.127	7411.00	2273.78	-116.14	2272.36	0.00	
10515.00†	90.000	90.127	7411.00	2373.77	-116.36	2372.36	0.00	
10615.00†	90.000	90.127	7411.00	2473.77	-116.59	2472.36	0.00	
10715.00†	90.000	90.127	7411.00	2573.76	-116.81	2572.36	0.00	
10815.00†	90.000	90.127	7411.00	2673.75	-117.03	2672.36	0.00	
10915.00†	90.000	90.127	7411.00	2773.74	-117.25	2772.36	0.00	
11015.00†	90.000	90.127	7411.00	2873.74	-117.47	2872.36	0.00	
11115.00†	90.000	90.127	7411.00	2973.73	-117.69	2972.36	0.00	
11215.00†	90.000	90.127	7411.00	3073.72	-117.91	3072.36	0.00	
11315.00†	90.000	90.127	7411.00	3173.72	-118.13	3172.36	0.00	
11415.00†	90.000	90.127	7411.00	3273.71	-118.35	3272.36	0.00	



Planned Wellpath Report

VARRA #7 (REV-B.0) PWP

Page 6 of 10



REFERENCE WELLPATH IDENTIFICATION

Operator	EXTRACTION OIL & GAS	Slot	SLOT#07 VARRA #7(1589'FSL & 788'FWL,SEC.05)
Area	COLORADO	Well	VARRA #7
Field	WELD COUNTY (NAD83/TRUE NORTH)	Wellbore	VARRA #7 PWB
Facility	SEC.05-T06N-R67W		

WELLPATH DATA (181 stations) † = interpolated/extrapolated station

MD [ft]	Inclination [°]	Azimuth [°]	TVD [ft]	Vert Sect [ft]	North [ft]	East [ft]	DLS [°/100ft]	Comments
11515.00†	90.000	90.127	7411.00	3373.70	-118.57	3372.36	0.00	
11615.00†	90.000	90.127	7411.00	3473.69	-118.79	3472.36	0.00	
11715.00†	90.000	90.127	7411.00	3573.69	-119.01	3572.36	0.00	
11815.00†	90.000	90.127	7411.00	3673.68	-119.24	3672.36	0.00	
11915.00†	90.000	90.127	7411.00	3773.67	-119.46	3772.36	0.00	
12015.00†	90.000	90.127	7411.00	3873.67	-119.68	3872.36	0.00	
12115.00†	90.000	90.127	7411.00	3973.66	-119.90	3972.36	0.00	
12215.00†	90.000	90.127	7411.00	4073.65	-120.12	4072.36	0.00	
12315.00†	90.000	90.127	7411.00	4173.64	-120.34	4172.36	0.00	
12415.00†	90.000	90.127	7411.00	4273.64	-120.56	4272.36	0.00	
12515.00†	90.000	90.127	7411.00	4373.63	-120.78	4372.36	0.00	
12615.00†	90.000	90.127	7411.00	4473.62	-121.00	4472.36	0.00	
12715.00†	90.000	90.127	7411.00	4573.62	-121.22	4572.36	0.00	
12815.00†	90.000	90.127	7411.00	4673.61	-121.44	4672.36	0.00	
12915.00†	90.000	90.127	7411.00	4773.60	-121.66	4772.36	0.00	
13015.00†	90.000	90.127	7411.00	4873.59	-121.89	4872.36	0.00	
13115.00†	90.000	90.127	7411.00	4973.59	-122.11	4972.36	0.00	
13215.00†	90.000	90.127	7411.00	5073.58	-122.33	5072.36	0.00	
13315.00†	90.000	90.127	7411.00	5173.57	-122.55	5172.35	0.00	
13415.00†	90.000	90.127	7411.00	5273.57	-122.77	5272.35	0.00	
13515.00†	90.000	90.127	7411.00	5373.56	-122.99	5372.35	0.00	
13615.00†	90.000	90.127	7411.00	5473.55	-123.21	5472.35	0.00	
13715.00†	90.000	90.127	7411.00	5573.54	-123.43	5572.35	0.00	
13815.00†	90.000	90.127	7411.00	5673.54	-123.65	5672.35	0.00	
13915.00†	90.000	90.127	7411.00	5773.53	-123.87	5772.35	0.00	
14015.00†	90.000	90.127	7411.00	5873.52	-124.09	5872.35	0.00	
14115.00†	90.000	90.127	7411.00	5973.52	-124.31	5972.35	0.00	
14215.00†	90.000	90.127	7411.00	6073.51	-124.54	6072.35	0.00	
14315.00†	90.000	90.127	7411.00	6173.50	-124.76	6172.35	0.00	
14415.00†	90.000	90.127	7411.00	6273.49	-124.98	6272.35	0.00	



Planned Wellpath Report

VARRA #7 (REV-B.0) PWP

Page 7 of 10



REFERENCE WELLPATH IDENTIFICATION

Operator	EXTRACTION OIL & GAS	Slot	SLOT#07 VARRA #7(1589'FSL & 788'FWL,SEC.05)
Area	COLORADO	Well	VARRA #7
Field	WELD COUNTY (NAD83/TRUE NORTH)	Wellbore	VARRA #7 PWB
Facility	SEC.05-T06N-R67W		

WELLPATH DATA (181 stations) † = interpolated/extrapolated station

MD [ft]	Inclination [°]	Azimuth [°]	TVD [ft]	Vert Sect [ft]	North [ft]	East [ft]	DLS [°/100ft]	Comments
14515.00†	90.000	90.127	7411.00	6373.49	-125.20	6372.35	0.00	
14615.00†	90.000	90.127	7411.00	6473.48	-125.42	6472.35	0.00	
14715.00†	90.000	90.127	7411.00	6573.47	-125.64	6572.35	0.00	
14815.00†	90.000	90.127	7411.00	6673.47	-125.86	6672.35	0.00	
14915.00†	90.000	90.127	7411.00	6773.46	-126.08	6772.35	0.00	
15015.00†	90.000	90.127	7411.00	6873.45	-126.30	6872.35	0.00	
15115.00†	90.000	90.127	7411.00	6973.44	-126.52	6972.35	0.00	
15215.00†	90.000	90.127	7411.00	7073.44	-126.74	7072.35	0.00	
15315.00†	90.000	90.127	7411.00	7173.43	-126.96	7172.35	0.00	
15415.00†	90.000	90.127	7411.00	7273.42	-127.19	7272.35	0.00	
15515.00†	90.000	90.127	7411.00	7373.41	-127.41	7372.35	0.00	
15615.00†	90.000	90.127	7411.00	7473.41	-127.63	7472.35	0.00	
15715.00†	90.000	90.127	7411.00	7573.40	-127.85	7572.35	0.00	
15815.00†	90.000	90.127	7411.00	7673.39	-128.07	7672.35	0.00	
15915.00†	90.000	90.127	7411.00	7773.39	-128.29	7772.35	0.00	
16015.00†	90.000	90.127	7411.00	7873.38	-128.51	7872.35	0.00	
16115.00†	90.000	90.127	7411.00	7973.37	-128.73	7972.35	0.00	
16215.00†	90.000	90.127	7411.00	8073.36	-128.95	8072.35	0.00	
16315.00†	90.000	90.127	7411.00	8173.36	-129.17	8172.35	0.00	
16415.00†	90.000	90.127	7411.00	8273.35	-129.39	8272.35	0.00	
16515.00†	90.000	90.127	7411.00	8373.34	-129.61	8372.35	0.00	
16615.00†	90.000	90.127	7411.00	8473.34	-129.84	8472.35	0.00	
16715.00†	90.000	90.127	7411.00	8573.33	-130.06	8572.35	0.00	
16815.00†	90.000	90.127	7411.00	8673.32	-130.28	8672.35	0.00	
16915.00†	90.000	90.127	7411.00	8773.31	-130.50	8772.35	0.00	
17015.00†	90.000	90.127	7411.00	8873.31	-130.72	8872.35	0.00	
17115.00†	90.000	90.127	7411.00	8973.30	-130.94	8972.35	0.00	
17215.00†	90.000	90.127	7411.00	9073.29	-131.16	9072.35	0.00	
17315.00†	90.000	90.127	7411.00	9173.29	-131.38	9172.35	0.00	
17415.00†	90.000	90.127	7411.00	9273.28	-131.60	9272.34	0.00	



Planned Wellpath Report

VARRA #7 (REV-B.0) PWP

Page 8 of 10



REFERENCE WELLPATH IDENTIFICATION

Operator	EXTRACTION OIL & GAS	Slot	SLOT#07 VARRA #7(1589'FSL & 788'FWL,SEC.05)
Area	COLORADO	Well	VARRA #7
Field	WELD COUNTY (NAD83/TRUE NORTH)	Wellbore	VARRA #7 PWB
Facility	SEC.05-T06N-R67W		

WELLPATH DATA (181 stations)

MD [ft]	Inclination [°]	Azimuth [°]	TVD [ft]	Vert Sect [ft]	North [ft]	East [ft]	DLS [°/100ft]	Comments
17421.19	90.000	90.127	7411.00 ²	9279.47	-131.62	9278.53	0.00	End of Tangent

HOLE & CASING SECTIONS - Ref Wellbore: VARRA #7 PWB Ref Wellpath: VARRA #7 (REV-B.0) PWP

String/Diameter	Start MD [ft]	End MD [ft]	Interval [ft]	Start TVD [ft]	End TVD [ft]	Start N/S [ft]	Start E/W [ft]	End N/S [ft]	End E/W [ft]
7.875in Open Hole	1500.00	17421.19	15921.19	1500.00	N/A	0.00	0.00	N/A	N/A
5.5in Casing Production	15.00	17421.19	17406.19	15.00	N/A	0.00	0.00	N/A	N/A

TARGETS

Name	MD [ft]	TVD [ft]	North [ft]	East [ft]	Grid East [US ft]	Grid North [US ft]	Latitude	Longitude	Shape
VARRA PAD SECTION 04		-9.00	155.91	1.14	3160186.77	1430380.18	40°30'48.118"N	104°55'25.957"W	polygon
VARRA PAD SECTION 05		-9.00	155.91	1.14	3160186.77	1430380.18	40°30'48.118"N	104°55'25.957"W	polygon
2) VARRA #7 BHL ON PLAT REV-1(1300'FSL & 460'FEL,SEC.04)	17421.19	7411.00	-131.62	9278.53	3169465.51	1430152.95	40°30'45.259"N	104°53'25.843"W	point
1) VARRA #7 LANDING POINT	7817.06	7411.00	-110.41	-325.57	3159861.80	1430111.76	40°30'45.486"N	104°55'30.187"W	point
VARRA PAD SOUTH 1/2 HARDLINES(460'SETBACKS)		7411.00	155.91	1.14	3160186.77	1430380.18	40°30'48.118"N	104°55'25.957"W	polygon



Planned Wellpath Report

VARRA #7 (REV-B.0) PWP

Page 9 of 10



REFERENCE WELLPATH IDENTIFICATION

Operator	EXTRACTION OIL & GAS	Slot	SLOT#07 VARRA #7(1589'FSL & 788'FWL,SEC.05)
Area	COLORADO	Well	VARRA #7
Field	WELD COUNTY (NAD83/TRUE NORTH)	Wellbore	VARRA #7 PWB
Facility	SEC.05-T06N-R67W		

SURVEY PROGRAM - Ref Wellbore: VARRA #7 PWB Ref Wellpath: VARRA #7 (REV-B.0) PWP

Start MD [ft]	End MD [ft]	Positional Uncertainty Model	Log Name/Comment	Wellbore
15.00	17421.19	NaviTrak (Standard)		VARRA #7 PWB



Planned Wellpath Report

VARRA #7 (REV-B.0) PWP

Page 10 of 10



REFERENCE WELLPATH IDENTIFICATION

Operator	EXTRACTION OIL & GAS	Slot	SLOT#07 VARRA #7(1589'FSL & 788'FWL,SEC.05)
Area	COLORADO	Well	VARRA #7
Field	WELD COUNTY (NAD83/TRUE NORTH)	Wellbore	VARRA #7 PWB
Facility	SEC.05-T06N-R67W		

DESIGN COMMENTS

MD [ft]	Inclination [°]	Azimuth [°]	TVD [ft]	Comment
15.00	0.000	263.845	15.00	Tie On
1500.00	0.000	263.845	1500.00	End of Tangent
2009.05	10.181	263.845	2006.37	End of Build
6815.87	10.181	263.845	6737.51	End of Tangent
7817.06	90.000	90.127	7411.00	End of 3D Arc
17421.19	90.000	90.127	7411.00	End of Tangent