

EXTRACTION OIL & GAS

Location: COLORADO Slot: SLOT#06 VARRA #6(1615'FSL & 788'FWL,SEC.05)
Field: WELD COUNTY (NAD83/TRUE NORTH) Well: VARRA #6
Facility: SEC.05-T06N-R67W Wellbore: VARRA #6 PWB

Plot reference wellpath is VARRA #6 PWP (REV-B.0)

True vertical depths are referenced to SAVANNA 802 (15KB) (RKB)	Grid System: NAD83 / Lambert Colorado SP, Northern Zone (501), US feet
Measured depths are referenced to SAVANNA 802 (15KB) (RKB)	North Reference: True north
SAVANNA 802 (15KB) (RKB) to Mean Sea Level: 4889 feet	Scale: True distance
Mean Sea Level to Mud line (At Slot: SLOT#06 VARRA #6(1615'FSL & 788'FWL,SEC.05)): 0 feet	Depths are in feet
Coordinates are in feet referenced to Slot	Created by: ingenj on 7/31/2015

Location Information

Facility Name			Grid East (US ft)	Grid North (US ft)	Latitude	Longitude
SEC.05-T06N-R67W			3160186.786	1430380.222	40°30'48.118"N	104°55'25.957"W
Slot	Local N (ft)	Local E (ft)	Grid East (US ft)	Grid North (US ft)	Latitude	Longitude
SLOT#06 VARRA #6(1615'FSL & 788'FWL,SEC.05)	-130.14	-0.85	3160186.782	1430250.081	40°30'46.832"N	104°55'25.968"W
SAVANNA 802 (15KB) (RKB) to Mud line (At Slot: SLOT#06 VARRA #6(1615'FSL & 788'FWL,SEC.05))					4889ft	
Mean Sea Level to Mud line (At Slot: SLOT#06 VARRA #6(1615'FSL & 788'FWL,SEC.05))					0ft	
SAVANNA 802 (15KB) (RKB) to Mean Sea Level					4889ft	

Targets

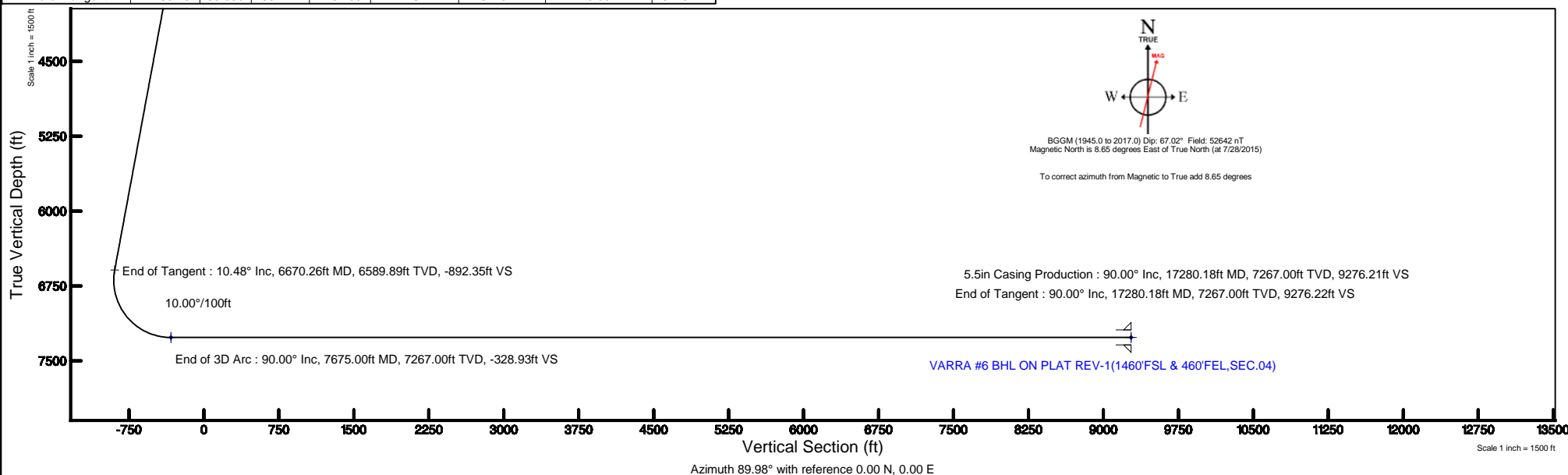
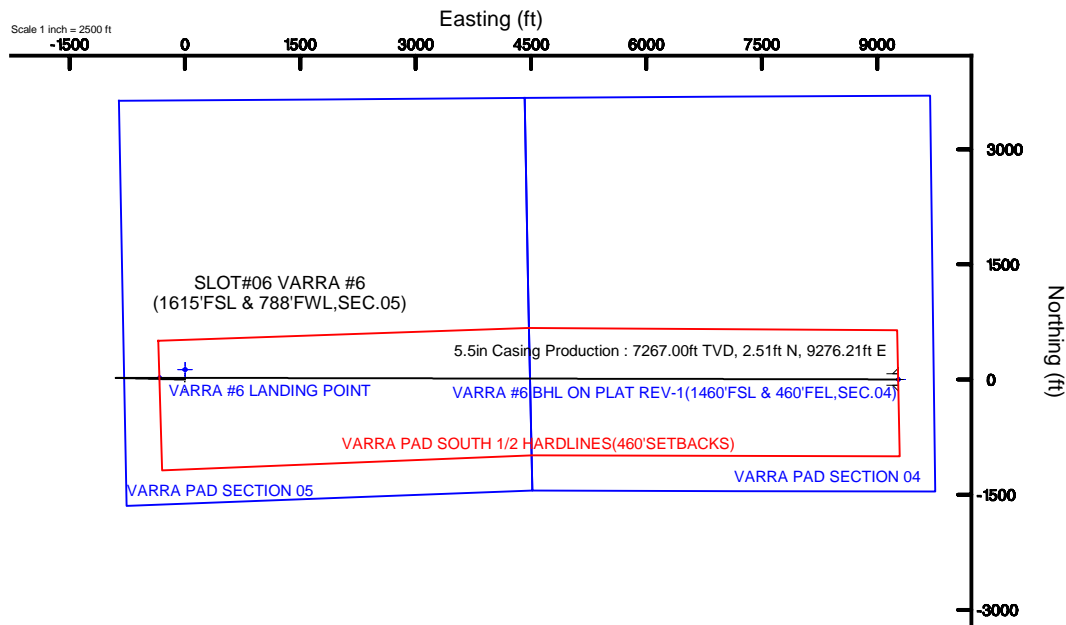
Name	MD (ft)	TVD (ft)	Local N (ft)	Local E (ft)	Grid East (US ft)	Grid North (US ft)	Latitude	Longitude
VARRA PAD SECTION 04		-9.00	130.10	0.83	3160186.77	1430380.18	40°30'48.118"N	104°55'25.957"W
VARRA PAD SECTION 05		-9.00	130.10	0.83	3160186.77	1430380.18	40°30'48.118"N	104°55'25.957"W
VARRA #6 BHL ON PLAT REV-1(1460'FSL & 460'FEL,SEC.04)	17280.18	7267.00	2.51	9276.22	3169462.47	1430312.86	40°30'46.840"N	104°53'25.868"W
VARRA #6 LANDING POINT	7675.00	7267.00	23.72	-328.94	3159857.71	1430271.67	40°30'47.086"N	104°55'30.227"W
VARRA PAD SOUTH 1/2 HARDLINES(460'SETBACKS)		7411.00	130.10	0.83	3160186.77	1430380.18	40°30'48.118"N	104°55'25.957"W

Survey Program

Start MD (ft)	End MD (ft)	Tool	Model	Log Name/Comment	Wellbore
15.00	17280.18	NaviTrak	NaviTrak (Standard)		VARRA #6 PWB

Well Profile Data

Design Comment	MD (ft)	Inc (°)	Az (°)	TVD (ft)	Local N (ft)	Local E (ft)	DLS (°/100ft)	VS (ft)
Tie On	15.00	0.000	271.421	15.00	0.00	0.00	0.00	0.00
End of Tangent	1500.00	0.000	271.421	1500.00	0.00	0.00	0.00	0.00
End of Build	2023.83	10.477	271.421	2020.91	1.18	-47.74	2.00	-47.74
End of Tangent	6670.26	10.477	271.421	6589.89	22.14	-892.36	0.00	-892.35
End of 3D Arc	7675.00	90.000	90.127	7267.00	23.72	-328.94	10.00	-328.93
End of Tangent	17280.18	90.000	90.127	7267.00	2.51	9276.22	0.00	9276.22





Planned Wellpath Report

VARRA #6 PWP (REV-B.0)

Page 1 of 8



REFERENCE WELLPATH IDENTIFICATION

Operator	EXTRACTION OIL & GAS	Slot	SLOT#06 VARRA #6(1615'FSL & 788'FWL,SEC.05)
Area	COLORADO	Well	VARRA #6
Field	WELD COUNTY (NAD83/TRUE NORTH)	Wellbore	VARRA #6 PWB
Facility	SEC.05-T06N-R67W		

REPORT SETUP INFORMATION

Projection System	NAD83 / Lambert Colorado SP, Northern Zone (501), US feet	Software System	WellArchitect® 4.1.1
North Reference	True	User	Ingmjmr
Scale	0.999967	Report Generated	7/31/2015 at 3:39:53 PM
Convergence at slot	0.37° East	Database/Source file	Denver/VARRA_#6_PWB.xml

WELLPATH LOCATION

	Local coordinates		Grid coordinates		Geographic coordinates	
	North[ft]	East[ft]	Easting[US ft]	Northing[US ft]	Latitude	Longitude
Slot Location	-130.14	-0.85	3160186.78	1430250.08	40°30'46.832"N	104°55'25.968"W
Facility Reference Pt			3160186.79	1430380.22	40°30'48.118"N	104°55'25.957"W
Field Reference Pt			3185481.27	1419166.81	40°28'55.560"N	104°49'59.556"W

WELLPATH DATUM

Calculation method	Minimum curvature	SAVANNA 802 (15'KB) (RKB) to Facility Vertical Datum	4889.00ft
Horizontal Reference Pt	Slot	SAVANNA 802 (15'KB) (RKB) to Mean Sea Level	4889.00ft
Vertical Reference Pt	SAVANNA 802 (15'KB) (RKB)	SAVANNA 802 (15'KB) (RKB) to Mud Line at Slot (SLOT#06 VARRA #6(1615'FSL & 788'FWL,SEC.05))	4889.00ft
MD Reference Pt	SAVANNA 802 (15'KB) (RKB)	Section Origin	N 0.00, E 0.00 ft
Field Vertical Reference	Mean Sea Level	Section Azimuth	89.98°



Planned Wellpath Report

VARRA #6 PWP (REV-B.0)

Page 2 of 8



REFERENCE WELLPATH IDENTIFICATION

Operator	EXTRACTION OIL & GAS	Slot	SLOT#06 VARRA #6(1615'FSL & 788'FWL,SEC.05)
Area	COLORADO	Well	VARRA #6
Field	WELD COUNTY (NAD83/TRUE NORTH)	Wellbore	VARRA #6 PWB
Facility	SEC.05-T06N-R67W		

WELLPATH DATA (179 stations) † = interpolated/extrapolated station

MD [ft]	Inclination [°]	Azimuth [°]	TVD [ft]	Vert Sect [ft]	North [ft]	East [ft]	DLS [°/100ft]	Comments
0.00†	0.000	271.421	0.00	0.00	0.00	0.00	0.00	
15.00	0.000	271.421	15.00	0.00	0.00	0.00	0.00	Tie On
115.00†	0.000	271.421	115.00	0.00	0.00	0.00	0.00	
215.00†	0.000	271.421	215.00	0.00	0.00	0.00	0.00	
315.00†	0.000	271.421	315.00	0.00	0.00	0.00	0.00	
415.00†	0.000	271.421	415.00	0.00	0.00	0.00	0.00	
515.00†	0.000	271.421	515.00	0.00	0.00	0.00	0.00	
615.00†	0.000	271.421	615.00	0.00	0.00	0.00	0.00	
715.00†	0.000	271.421	715.00	0.00	0.00	0.00	0.00	
815.00†	0.000	271.421	815.00	0.00	0.00	0.00	0.00	
915.00†	0.000	271.421	915.00	0.00	0.00	0.00	0.00	
1015.00†	0.000	271.421	1015.00	0.00	0.00	0.00	0.00	
1115.00†	0.000	271.421	1115.00	0.00	0.00	0.00	0.00	
1215.00†	0.000	271.421	1215.00	0.00	0.00	0.00	0.00	
1315.00†	0.000	271.421	1315.00	0.00	0.00	0.00	0.00	
1415.00†	0.000	271.421	1415.00	0.00	0.00	0.00	0.00	
1500.00	0.000	271.421	1500.00	0.00	0.00	0.00	0.00	End of Tangent
1515.00†	0.300	271.421	1515.00	-0.04	0.00	-0.04	2.00	
1615.00†	2.300	271.421	1614.97	-2.31	0.06	-2.31	2.00	
1715.00†	4.300	271.421	1714.80	-8.06	0.20	-8.06	2.00	
1815.00†	6.300	271.421	1814.37	-17.30	0.43	-17.30	2.00	
1915.00†	8.300	271.421	1913.55	-30.00	0.74	-30.00	2.00	
2015.00†	10.300	271.421	2012.23	-46.15	1.14	-46.15	2.00	
2023.83	10.477	271.421	2020.91	-47.74	1.18	-47.74	2.00	End of Build
2115.00†	10.477	271.421	2110.57	-64.32	1.60	-64.32	0.00	
2215.00†	10.477	271.421	2208.90	-82.49	2.05	-82.49	0.00	
2315.00†	10.477	271.421	2307.23	-100.67	2.50	-100.67	0.00	
2415.00†	10.477	271.421	2405.56	-118.85	2.95	-118.85	0.00	
2515.00†	10.477	271.421	2503.90	-137.03	3.40	-137.03	0.00	
2615.00†	10.477	271.421	2602.23	-155.20	3.85	-155.20	0.00	



Planned Wellpath Report

VARRA #6 PWP (REV-B.0)

Page 3 of 8



REFERENCE WELLPATH IDENTIFICATION

Operator	EXTRACTION OIL & GAS	Slot	SLOT#06 VARRA #6(1615'FSL & 788'FWL,SEC.05)
Area	COLORADO	Well	VARRA #6
Field	WELD COUNTY (NAD83/TRUE NORTH)	Wellbore	VARRA #6 PWB
Facility	SEC.05-T06N-R67W		

WELLPATH DATA (179 stations) † = interpolated/extrapolated station

MD [ft]	Inclination [°]	Azimuth [°]	TVD [ft]	Vert Sect [ft]	North [ft]	East [ft]	DLS [°/100ft]	Comments
2715.00†	10.477	271.421	2700.56	-173.38	4.30	-173.38	0.00	
2815.00†	10.477	271.421	2798.90	-191.56	4.75	-191.56	0.00	
2915.00†	10.477	271.421	2897.23	-209.74	5.20	-209.74	0.00	
3015.00†	10.477	271.421	2995.56	-227.91	5.65	-227.91	0.00	
3115.00†	10.477	271.421	3093.90	-246.09	6.11	-246.09	0.00	
3215.00†	10.477	271.421	3192.23	-264.27	6.56	-264.27	0.00	
3315.00†	10.477	271.421	3290.56	-282.45	7.01	-282.45	0.00	
3415.00†	10.477	271.421	3388.89	-300.62	7.46	-300.63	0.00	
3515.00†	10.477	271.421	3487.23	-318.80	7.91	-318.80	0.00	
3615.00†	10.477	271.421	3585.56	-336.98	8.36	-336.98	0.00	
3715.00†	10.477	271.421	3683.89	-355.16	8.81	-355.16	0.00	
3815.00†	10.477	271.421	3782.23	-373.33	9.26	-373.34	0.00	
3915.00†	10.477	271.421	3880.56	-391.51	9.71	-391.51	0.00	
4015.00†	10.477	271.421	3978.89	-409.69	10.16	-409.69	0.00	
4115.00†	10.477	271.421	4077.23	-427.87	10.62	-427.87	0.00	
4215.00†	10.477	271.421	4175.56	-446.04	11.07	-446.05	0.00	
4315.00†	10.477	271.421	4273.89	-464.22	11.52	-464.22	0.00	
4415.00†	10.477	271.421	4372.22	-482.40	11.97	-482.40	0.00	
4515.00†	10.477	271.421	4470.56	-500.58	12.42	-500.58	0.00	
4615.00†	10.477	271.421	4568.89	-518.75	12.87	-518.76	0.00	
4715.00†	10.477	271.421	4667.22	-536.93	13.32	-536.93	0.00	
4815.00†	10.477	271.421	4765.56	-555.11	13.77	-555.11	0.00	
4915.00†	10.477	271.421	4863.89	-573.29	14.22	-573.29	0.00	
5015.00†	10.477	271.421	4962.22	-591.46	14.67	-591.47	0.00	
5115.00†	10.477	271.421	5060.55	-609.64	15.12	-609.65	0.00	
5215.00†	10.477	271.421	5158.89	-627.82	15.58	-627.82	0.00	
5315.00†	10.477	271.421	5257.22	-646.00	16.03	-646.00	0.00	
5415.00†	10.477	271.421	5355.55	-664.17	16.48	-664.18	0.00	
5515.00†	10.477	271.421	5453.89	-682.35	16.93	-682.36	0.00	
5615.00†	10.477	271.421	5552.22	-700.53	17.38	-700.53	0.00	



Planned Wellpath Report

VARRA #6 PWP (REV-B.0)

Page 4 of 8



REFERENCE WELLPATH IDENTIFICATION

Operator	EXTRACTION OIL & GAS	Slot	SLOT#06 VARRA #6(1615'FSL & 788'FWL,SEC.05)
Area	COLORADO	Well	VARRA #6
Field	WELD COUNTY (NAD83/TRUE NORTH)	Wellbore	VARRA #6 PWB
Facility	SEC.05-T06N-R67W		

WELLPATH DATA (179 stations) † = interpolated/extrapolated station

MD [ft]	Inclination [°]	Azimuth [°]	TVD [ft]	Vert Sect [ft]	North [ft]	East [ft]	DLS [°/100ft]	Comments
5715.00†	10.477	271.421	5650.55	-718.71	17.83	-718.71	0.00	
5815.00†	10.477	271.421	5748.89	-736.88	18.28	-736.89	0.00	
5915.00†	10.477	271.421	5847.22	-755.06	18.73	-755.07	0.00	
6015.00†	10.477	271.421	5945.55	-773.24	19.18	-773.24	0.00	
6115.00†	10.477	271.421	6043.88	-791.42	19.63	-791.42	0.00	
6215.00†	10.477	271.421	6142.22	-809.59	20.09	-809.60	0.00	
6315.00†	10.477	271.421	6240.55	-827.77	20.54	-827.78	0.00	
6415.00†	10.477	271.421	6338.88	-845.95	20.99	-845.95	0.00	
6515.00†	10.477	271.421	6437.22	-864.13	21.44	-864.13	0.00	
6615.00†	10.477	271.421	6535.55	-882.30	21.89	-882.31	0.00	
6670.26	10.477	271.421	6589.89	-892.35	22.14	-892.36	0.00	End of Tangent
6715.00†	6.005	272.403	6634.15	-898.76	22.34	-898.76	10.00	
6815.00†	4.007	86.707	6734.01	-900.50	22.76	-900.51	10.00	
6915.00†	14.002	89.166	6832.65	-884.88	23.14	-884.88	10.00	
7015.00†	24.001	89.589	6927.09	-852.36	23.46	-852.37	10.00	
7115.00†	34.000	89.772	7014.44	-803.94	23.72	-803.95	10.00	
7215.00†	44.000	89.879	7092.05	-741.09	23.90	-741.09	10.00	
7315.00†	54.000	89.953	7157.57	-665.71	24.01	-665.72	10.00	
7415.00†	64.000	90.010	7209.01	-580.10	24.04	-580.11	10.00	
7515.00†	74.000	90.058	7244.80	-486.86	23.98	-486.87	10.00	
7615.00†	84.000	90.101	7263.86	-388.83	23.84	-388.83	10.00	
7675.00	90.000	90.127	7267.00 [†]	-328.93	23.72	-328.94	10.00	End of 3D Arc
7715.00†	90.000	90.127	7267.00	-288.94	23.64	-288.94	0.00	
7815.00†	90.000	90.127	7267.00	-188.94	23.41	-188.94	0.00	
7915.00†	90.000	90.127	7267.00	-88.94	23.19	-88.94	0.00	
8015.00†	90.000	90.127	7267.00	11.06	22.97	11.06	0.00	
8115.00†	90.000	90.127	7267.00	111.06	22.75	111.06	0.00	
8215.00†	90.000	90.127	7267.00	211.06	22.53	211.06	0.00	
8315.00†	90.000	90.127	7267.00	311.06	22.31	311.06	0.00	
8415.00†	90.000	90.127	7267.00	411.06	22.09	411.06	0.00	



Planned Wellpath Report

VARRA #6 PWP (REV-B.0)

Page 5 of 8



REFERENCE WELLPATH IDENTIFICATION

Operator	EXTRACTION OIL & GAS	Slot	SLOT#06 VARRA #6(1615'FSL & 788'FWL,SEC.05)
Area	COLORADO	Well	VARRA #6
Field	WELD COUNTY (NAD83/TRUE NORTH)	Wellbore	VARRA #6 PWB
Facility	SEC.05-T06N-R67W		

WELLPATH DATA (179 stations) † = interpolated/extrapolated station

MD [ft]	Inclination [°]	Azimuth [°]	TVD [ft]	Vert Sect [ft]	North [ft]	East [ft]	DLS [°/100ft]	Comments
8515.00†	90.000	90.127	7267.00	511.06	21.87	511.06	0.00	
8615.00†	90.000	90.127	7267.00	611.06	21.65	611.06	0.00	
8715.00†	90.000	90.127	7267.00	711.06	21.43	711.06	0.00	
8815.00†	90.000	90.127	7267.00	811.06	21.21	811.05	0.00	
8915.00†	90.000	90.127	7267.00	911.06	20.99	911.05	0.00	
9015.00†	90.000	90.127	7267.00	1011.06	20.76	1011.05	0.00	
9115.00†	90.000	90.127	7267.00	1111.06	20.54	1111.05	0.00	
9215.00†	90.000	90.127	7267.00	1211.06	20.32	1211.05	0.00	
9315.00†	90.000	90.127	7267.00	1311.06	20.10	1311.05	0.00	
9415.00†	90.000	90.127	7267.00	1411.06	19.88	1411.05	0.00	
9515.00†	90.000	90.127	7267.00	1511.06	19.66	1511.05	0.00	
9615.00†	90.000	90.127	7267.00	1611.06	19.44	1611.05	0.00	
9715.00†	90.000	90.127	7267.00	1711.06	19.22	1711.05	0.00	
9815.00†	90.000	90.127	7267.00	1811.06	19.00	1811.05	0.00	
9915.00†	90.000	90.127	7267.00	1911.06	18.78	1911.05	0.00	
10015.00†	90.000	90.127	7267.00	2011.06	18.56	2011.05	0.00	
10115.00†	90.000	90.127	7267.00	2111.06	18.34	2111.05	0.00	
10215.00†	90.000	90.127	7267.00	2211.06	18.11	2211.05	0.00	
10315.00†	90.000	90.127	7267.00	2311.06	17.89	2311.05	0.00	
10415.00†	90.000	90.127	7267.00	2411.06	17.67	2411.05	0.00	
10515.00†	90.000	90.127	7267.00	2511.06	17.45	2511.05	0.00	
10615.00†	90.000	90.127	7267.00	2611.06	17.23	2611.05	0.00	
10715.00†	90.000	90.127	7267.00	2711.05	17.01	2711.05	0.00	
10815.00†	90.000	90.127	7267.00	2811.05	16.79	2811.05	0.00	
10915.00†	90.000	90.127	7267.00	2911.05	16.57	2911.05	0.00	
11015.00†	90.000	90.127	7267.00	3011.05	16.35	3011.05	0.00	
11115.00†	90.000	90.127	7267.00	3111.05	16.13	3111.05	0.00	
11215.00†	90.000	90.127	7267.00	3211.05	15.91	3211.05	0.00	
11315.00†	90.000	90.127	7267.00	3311.05	15.69	3311.05	0.00	
11415.00†	90.000	90.127	7267.00	3411.05	15.47	3411.05	0.00	



Planned Wellpath Report

VARRA #6 PWP (REV-B.0)

Page 6 of 8



REFERENCE WELLPATH IDENTIFICATION

Operator	EXTRACTION OIL & GAS	Slot	SLOT#06 VARRA #6(1615'FSL & 788'FWL,SEC.05)
Area	COLORADO	Well	VARRA #6
Field	WELD COUNTY (NAD83/TRUE NORTH)	Wellbore	VARRA #6 PWB
Facility	SEC.05-T06N-R67W		

WELLPATH DATA (179 stations) † = interpolated/extrapolated station

MD [ft]	Inclination [°]	Azimuth [°]	TVD [ft]	Vert Sect [ft]	North [ft]	East [ft]	DLS [°/100ft]	Comments
11515.00†	90.000	90.127	7267.00	3511.05	15.24	3511.05	0.00	
11615.00†	90.000	90.127	7267.00	3611.05	15.02	3611.05	0.00	
11715.00†	90.000	90.127	7267.00	3711.05	14.80	3711.05	0.00	
11815.00†	90.000	90.127	7267.00	3811.05	14.58	3811.05	0.00	
11915.00†	90.000	90.127	7267.00	3911.05	14.36	3911.05	0.00	
12015.00†	90.000	90.127	7267.00	4011.05	14.14	4011.05	0.00	
12115.00†	90.000	90.127	7267.00	4111.05	13.92	4111.05	0.00	
12215.00†	90.000	90.127	7267.00	4211.05	13.70	4211.05	0.00	
12315.00†	90.000	90.127	7267.00	4311.05	13.48	4311.05	0.00	
12415.00†	90.000	90.127	7267.00	4411.05	13.26	4411.05	0.00	
12515.00†	90.000	90.127	7267.00	4511.05	13.04	4511.05	0.00	
12615.00†	90.000	90.127	7267.00	4611.05	12.82	4611.05	0.00	
12715.00†	90.000	90.127	7267.00	4711.05	12.59	4711.05	0.00	
12815.00†	90.000	90.127	7267.00	4811.05	12.37	4811.05	0.00	
12915.00†	90.000	90.127	7267.00	4911.05	12.15	4911.04	0.00	
13015.00†	90.000	90.127	7267.00	5011.05	11.93	5011.04	0.00	
13115.00†	90.000	90.127	7267.00	5111.05	11.71	5111.04	0.00	
13215.00†	90.000	90.127	7267.00	5211.05	11.49	5211.04	0.00	
13315.00†	90.000	90.127	7267.00	5311.05	11.27	5311.04	0.00	
13415.00†	90.000	90.127	7267.00	5411.05	11.05	5411.04	0.00	
13515.00†	90.000	90.127	7267.00	5511.05	10.83	5511.04	0.00	
13615.00†	90.000	90.127	7267.00	5611.05	10.61	5611.04	0.00	
13715.00†	90.000	90.127	7267.00	5711.05	10.39	5711.04	0.00	
13815.00†	90.000	90.127	7267.00	5811.05	10.17	5811.04	0.00	
13915.00†	90.000	90.127	7267.00	5911.04	9.94	5911.04	0.00	
14015.00†	90.000	90.127	7267.00	6011.04	9.72	6011.04	0.00	
14115.00†	90.000	90.127	7267.00	6111.04	9.50	6111.04	0.00	
14215.00†	90.000	90.127	7267.00	6211.04	9.28	6211.04	0.00	
14315.00†	90.000	90.127	7267.00	6311.04	9.06	6311.04	0.00	
14415.00†	90.000	90.127	7267.00	6411.04	8.84	6411.04	0.00	



Planned Wellpath Report

VARRA #6 PWP (REV-B.0)

Page 7 of 8



REFERENCE WELLPATH IDENTIFICATION

Operator	EXTRACTION OIL & GAS	Slot	SLOT#06 VARRA #6(1615'FSL & 788'FWL,SEC.05)
Area	COLORADO	Well	VARRA #6
Field	WELD COUNTY (NAD83/TRUE NORTH)	Wellbore	VARRA #6 PWB
Facility	SEC.05-T06N-R67W		

WELLPATH DATA (179 stations) † = interpolated/extrapolated station

MD [ft]	Inclination [°]	Azimuth [°]	TVD [ft]	Vert Sect [ft]	North [ft]	East [ft]	DLS [°/100ft]	Comments
14515.00†	90.000	90.127	7267.00	6511.04	8.62	6511.04	0.00	
14615.00†	90.000	90.127	7267.00	6611.04	8.40	6611.04	0.00	
14715.00†	90.000	90.127	7267.00	6711.04	8.18	6711.04	0.00	
14815.00†	90.000	90.127	7267.00	6811.04	7.96	6811.04	0.00	
14915.00†	90.000	90.127	7267.00	6911.04	7.74	6911.04	0.00	
15015.00†	90.000	90.127	7267.00	7011.04	7.52	7011.04	0.00	
15115.00†	90.000	90.127	7267.00	7111.04	7.30	7111.04	0.00	
15215.00†	90.000	90.127	7267.00	7211.04	7.07	7211.04	0.00	
15315.00†	90.000	90.127	7267.00	7311.04	6.85	7311.04	0.00	
15415.00†	90.000	90.127	7267.00	7411.04	6.63	7411.04	0.00	
15515.00†	90.000	90.127	7267.00	7511.04	6.41	7511.04	0.00	
15615.00†	90.000	90.127	7267.00	7611.04	6.19	7611.04	0.00	
15715.00†	90.000	90.127	7267.00	7711.04	5.97	7711.04	0.00	
15815.00†	90.000	90.127	7267.00	7811.04	5.75	7811.04	0.00	
15915.00†	90.000	90.127	7267.00	7911.04	5.53	7911.04	0.00	
16015.00†	90.000	90.127	7267.00	8011.04	5.31	8011.04	0.00	
16115.00†	90.000	90.127	7267.00	8111.04	5.09	8111.04	0.00	
16215.00†	90.000	90.127	7267.00	8211.04	4.87	8211.04	0.00	
16315.00†	90.000	90.127	7267.00	8311.04	4.65	8311.04	0.00	
16415.00†	90.000	90.127	7267.00	8411.04	4.42	8411.04	0.00	
16515.00†	90.000	90.127	7267.00	8511.04	4.20	8511.04	0.00	
16615.00†	90.000	90.127	7267.00	8611.04	3.98	8611.04	0.00	
16715.00†	90.000	90.127	7267.00	8711.04	3.76	8711.04	0.00	
16815.00†	90.000	90.127	7267.00	8811.04	3.54	8811.04	0.00	
16915.00†	90.000	90.127	7267.00	8911.04	3.32	8911.04	0.00	
17015.00†	90.000	90.127	7267.00	9011.04	3.10	9011.03	0.00	
17115.00†	90.000	90.127	7267.00	9111.04	2.88	9111.03	0.00	
17215.00†	90.000	90.127	7267.00	9211.03	2.66	9211.03	0.00	
17280.18	90.000	90.127	7267.00 ²	9276.22	2.51	9276.22	0.00	End of Tangent

HOLE & CASING SECTIONS - Ref Wellbore: VARRA #6 PWB Ref Wellpath: VARRA #6 PWP (REV-B.0)

String/Diameter	Start MD [ft]	End MD [ft]	Interval [ft]	Start TVD [ft]	End TVD [ft]	Start N/S [ft]	Start E/W [ft]	End N/S [ft]	End E/W [ft]
7.875in Open Hole	1500.00	17280.18	15780.18	1500.00	7267.00	0.00	0.00	2.51	9276.21
5.5in Casing Production	15.00	17280.18	17265.18	15.00	7267.00	0.00	0.00	2.51	9276.21

TARGETS

Name	MD [ft]	TVD [ft]	North [ft]	East [ft]	Grid East [US ft]	Grid North [US ft]	Latitude	Longitude	Shape
VARRA PAD SECTION 04		-9.00	130.10	0.83	3160186.77	1430380.18	40°30'48.118"N	104°55'25.957"W	polygon
VARRA PAD SECTION 05		-9.00	130.10	0.83	3160186.77	1430380.18	40°30'48.118"N	104°55'25.957"W	polygon
2) VARRA #6 BHL ON PLAT REV-1(1460'FSL &	17280.18	7267.00	2.51	9276.22	3169462.47	1430312.86	40°30'46.840"N	104°53'25.868"W	point

460'FEL,SEC.04)									
1) VARRA #6 LANDING POINT	7675.00	7267.00	23.72	-328.94	3159857.71	1430271.67	40°30'47.066"N	104°55'30.227"W	point
VARRA PAD SOUTH 1/2 HARDLINES(460'SETBACKS)		7411.00	130.10	0.83	3160186.77	1430380.18	40°30'48.118"N	104°55'25.957"W	polygon

SURVEY PROGRAM - Ref Wellbore: VARRA #6 PWB Ref Wellpath: VARRA #6 PWP (REV-B.0)									
Start MD [ft]	End MD [ft]	Positional Uncertainty Model			Log Name/Comment			Wellbore	
15.00	17280.18	NaviTrak (Standard)						VARRA #6 PWB	



Planned Wellpath Report

VARRA #6 PWP (REV-B.0)

Page 8 of 8



REFERENCE WELLPATH IDENTIFICATION

Operator	EXTRACTION OIL & GAS	Slot	SLOT#06 VARRA #6(1615'FSL & 788'FWL,SEC.05)
Area	COLORADO	Well	VARRA #6
Field	WELD COUNTY (NAD83/TRUE NORTH)	Wellbore	VARRA #6 PWB
Facility	SEC.05-T06N-R67W		

DESIGN COMMENTS

MD [ft]	Inclination [°]	Azimuth [°]	TVD [ft]	Comment
15.00	0.000	271.421	15.00	Tie On
1500.00	0.000	271.421	1500.00	End of Tangent
2023.83	10.477	271.421	2020.91	End of Build
6670.26	10.477	271.421	6589.89	End of Tangent
7675.00	90.000	90.127	7267.00	End of 3D Arc
17280.18	90.000	90.127	7267.00	End of Tangent