

Décollement Consulting Inc.



Scale: 5" / 100'
Measured Depth Log

Well Name North Platte Federal F21-J24-22HNB

Location NW/NW Section 22, T5N - R63W

State CO

County Weld

Country USA

Rig Number Xtreme 22

API Number 05-123-40200

Field Wattenberg

Region D.J. Basin

Drilling Completed 5/24/2015

Spud Date 5/7/2015

Surface Coordinates 677 FNL x 1205 FWL (Lat: 40.390285, -104.426818)

Bottom Hole Coordinates 470 FSL x 1628 FWL (Lat: 40.378930, -104.425284)

Ground Elevation 4,658'

K.B. Elevation 4,675'

Logged Interval 6,979' To 11,108'

Total Depth 11,108'

Formation Niobrara "B" Chalk

Type of Drilling Fluid Water Based Mud

Operator

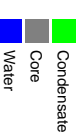
Address Bonanza Creek Energy, Inc.
410 17th Street, Suite 1500
Denver, Colorado 80202

Geologist

Name Scott Sawyer / Paul Givens
Company Decollement Consulting, Inc.
Address 13300 Braun Road
Golden, CO 80401



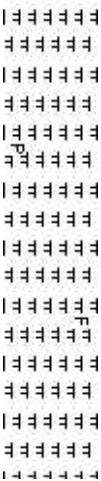
Zone Color Coding



Rock Types

Blank

CEMENT



SHALE S



SHALE S

CHALK



LIMESTONE

SANDSTONE

SHALE SF

MARLSTONE

SHALE



Fossils

- ALGAE
- AMPHIPORA
- BELEMNITE
- BIOCLASTIC
- BRACHIOPOD
- BRYOZOA
- CEPHALOPOD
- CORAL
- CRINOID
- ECHINOID
- FISH
- FORAMINIFERA

F FOSSIL

GASTROPOD

OOLITE

OSTRACOD

PELECYPOD

PELLET

PISOLITE

PLANT REMAINS

PLANT SPORES

SCAPHOPOD

STROMATOPOROID

Minerals

ANHYDRITIC

ARGILLACEOUS

ARGILLITE GRAIN

BENTONITE

BITUMENOUS SUBSTANCE

BRECCIA FRAGMENTS

CALCAREOUS

CARBONACEOUS FLAKES

CHITDK

CHTLT

COAL - THIN BEDS

DOLOMITIC

FELDSPAR

FERRUGINOUS PELLET

FERRUGINOUS

GLAUCONITE

GYPSIFEROUS

HEAVY MINERAL

KAOLIN

MARLSTONE

MINERAL CRYSTALS

NODULES

PHOSPHATE PELLETS

PYRITE

SALT CAST

SANDY

SILICEOUS

SILTY

TUFFACEOUS

Stringer

- ANHYDRITE STRINGER
- BENTONITE STRINGER
- COAL STRINGER
- DOLOMITE STRINGER
- GYPSUM STRINGER
- LIMESTONE STRINGER
- MARLSTONE (CALC) STRG
- MARLSTONE (DOL) STRG
- SANDSTONE STRINGER
- SHALE STRINGER
- SILTSTONE STRINGER

Accessories

Other Symbols

O ORGANIC

FORMATION TOP

L LITHOGRAPHIC

Oil Show

P PINPOINT

GAS SHOW

MX MICROXLN

Rounding

DEAD

VUGGY

MINDEPTH

MN DEPTH

A ANGULAR

MS MUDSTONE

EVEN

NORMAL FAULT

R ROUNDED

PS PACKSTONE

Engineering

QUESTIONABLE

OIL SHOW

B SUBANG

WS WACKESTONE

SPOTTED STAINING

BIT

OVERTURNED STRATA

R SUBRND

Sorting

CASING

REVERSE FAULT

Porosity

CONNECTION (LEFT)

SIDEWALL CORE (LEFT)

M MODERATE

EARTHY

CONNECTION (RIGHT)

SIDEWALL CORE (RIGHT)

B3 BOUNDSTONE

P POOR

FENESTRAL

CONNECTION GAS

SLIDE

C CHALKY

W WELL

FRACTURE

CORE - LOST

SURVEY

CX CRYPTOXLN

INTERCRYSTALLINE

CORE - RECOVERED

TRIP GAS

E EARTHY

INTEROOLITIC

DST INTERVAL

WIRELINE TESTED - LEFT

FX FINELYXLN

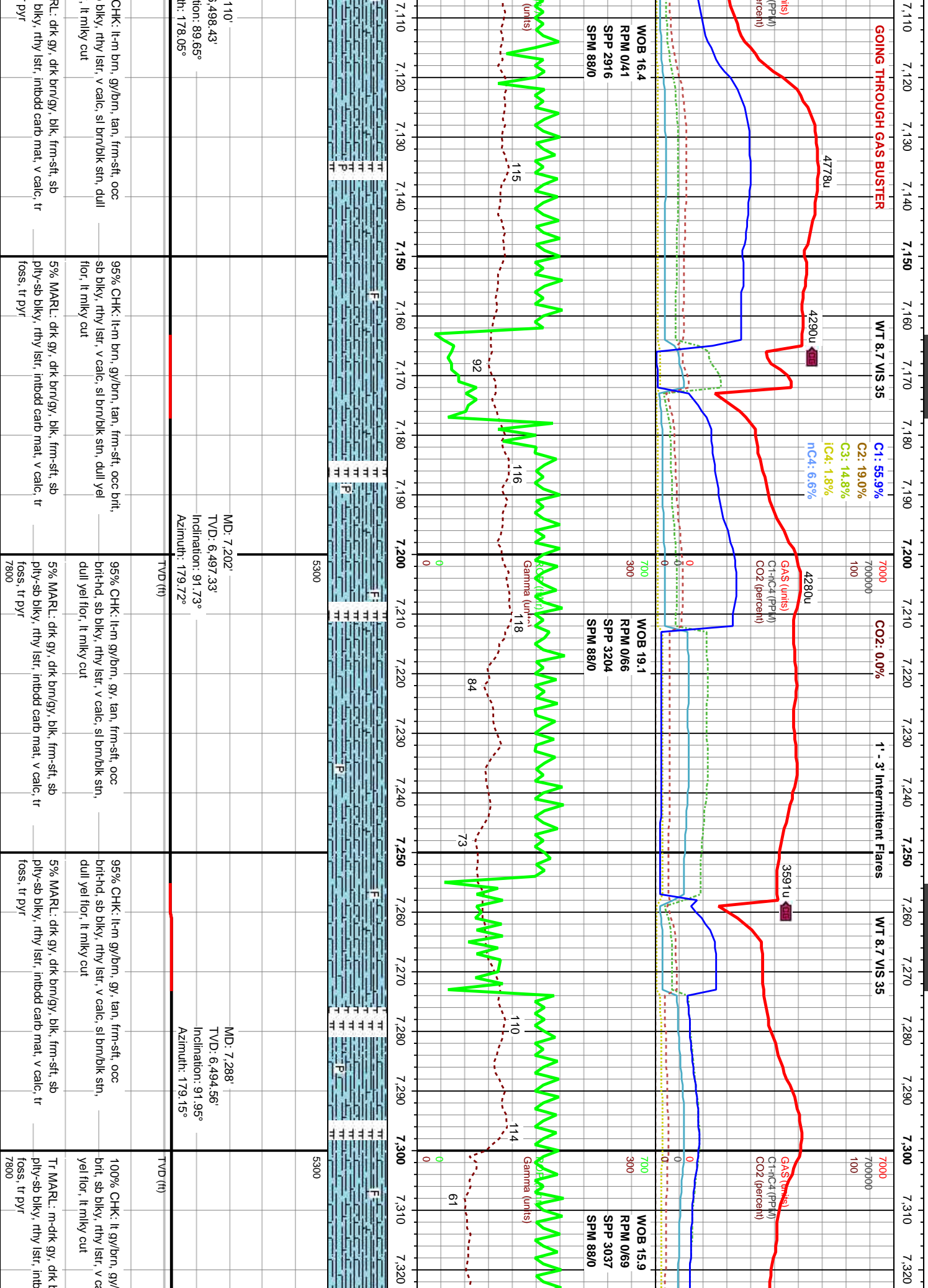
MOLDIC

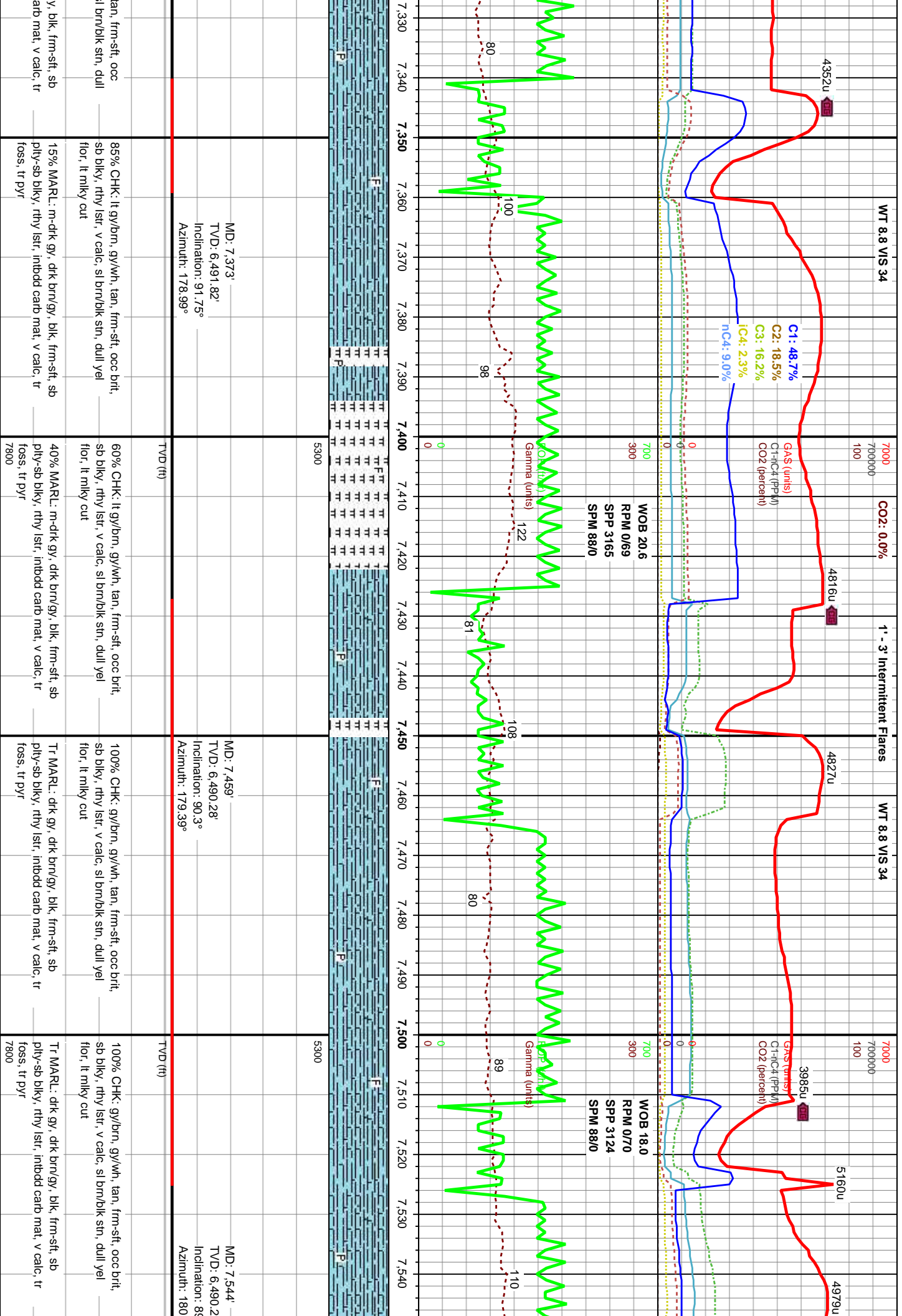
FAULT

WIRELINE TESTED - RT

GS GRAINSTONE

Slide/Rotate																					
Depth	6,930	6,940	6,950	6,960	6,970	6,980	6,990	7,000	7,010	7,020	7,030	7,040	7,050	7,060	7,070	7,080	7,090	7,100			
Total Gas & Chromatography	Total Gas Calibration 1% Methane = 100u			Black = Slide White = Rotate			TG: 9964u C1: 66.6% C2: 15.6% C3: 6.3% iC4: 0.5% nC4: 2.1%			CO2: 2.5%			1' - 3' Intermitent Flares			WT 8.7 VIS 35					
	Gas Chromatograph Calibration			WT 8.7 Vis 34 Fill 12.4 PV/YP 2/2 Gels 1/1 pH 9.0 Hd 100.0 Cl 1,200 Sol 3%			GAS (units) C1-C4 (P/W) CO2 (Percent)														
	C1 = 1.0% Methane = 10,000ppm			C2 = 1.0% Ethane = 10,000ppm			C3 = 1.0% Propane = 10,000ppm			iC4 = 1.0% Iso-Butane = 10,000ppm			nC4 = 1.0% N-Butane = 10,000ppm								
	C1			C2			C3			iC4			nC4			CO2					
	C1			C2			C3			iC4			nC4			CO2					
Curves	Decollement Consulting on location and rigged up on 5/23/2015.			Bit #: 3 Size: 6 1/8" Mfr.: Varel Type: VS513DGu Depth In: 6,980' Depth Out: 8,250' Jets: 5X22 S/N: 4008148			WOB 9.6 RPM 0/40 SPM 2547 SPM 87/0			ROP (ft/hr) Gamma (API) Gamma (ppm)			ROP (ft/hr) Gamma (API) Gamma (ppm)			ROP (ft/hr) Gamma (API) Gamma (ppm)					
	Start logging at 6,000' on 5/23/2015 at 0433 hours.																				
	ROP			Gamma			ROP			Gamma			ROP			Gamma					
	ROP			Gamma			ROP			Gamma			ROP			Gamma					
	ROP			Gamma			ROP			Gamma			ROP			Gamma					
Depth Labels	6,930	6,940	6,950	6,960	6,970	6,980	6,990	7,000	7,010	7,020	7,030	7,040	7,050	7,060	7,070	7,080	7,090	7,100			
Interpretive Lithology							F			F			F			F			F		
							P			P			P			P			P		
							F			F			F			F			F		
							P			P			P			P			P		
							F			F			F			F			F		
Well Bore							MD: 7.017' TVD: 6.495.93' Inclination: 87.26° Azimuth: 177.96°														
							TVD (ft)														
							100% CHK: lt-m brn, gy/brn, tan, frm-sft, occ brlt, sb blkly, rthy lstr, v calc, sl brn/blk stn, dull yel flor, lt mlky cut														
							Tr MARL: drk gy, blk, frm-sft, sb pty-sb blkly, rthy lstr, inthd carb mat, v calc, tr foss, tr pyr														
							TVD (ft)														
Oil Show							5300														
							5300														
							5300														
							5300														
							5300														





7.550 7.560 7.570 7.580 7.590 7.600 7.610 7.620 7.630 7.640 7.650 7.660 7.670 7.680 7.690 7.700 7.710 7.720 7.730 7.740 7.750 7.760

WT 8.8 VIS 35

CO₂: 0.0%

1' - 3' Intermittent Flares

WT 8.8 VIS 35

WT 8.5

C1: 15.7%

C2: 9.2%

C3: 45.2%

iC4: 5.4%

nC4: 22.0%

4074u

GOING THROUGH GAS BUSTER

GAS (units)
CH₄ (PPM)
CO₂ (percent)

3565u

GAS (units)
CH₄ (PPM)
CO₂ (percent)

5278u

4005u

WOB 29.0
RPM 0/0
SPP 2673
SPM 88/0

WOB 12.6
RPM 0/71
SPP 2847
SPM 88/0

124

127

161

135

159

131

124

127

161

135

159

131

124

127

161

135

159

131

124

127

161

135

159

131

124

127

161

135

159

131

124

127

161

135

159

131

124

127

161

135

159

131

124

127

161

135

159

131

124

127

161

135

159

131

124

127

161

135

159

131

124

127

161

135

159

131

124

127

161

135

159

131

124

127

161

135

159

131

124

127

161

135

159

131

124

127

161

135

159

131

124

127

161

135

159

131

124

127

161

135

159

131

124

127

161

135

159

131

124

127

161

135

159

131

124

127

161

135

159

131

124

127

161

135

159

131

124

127

161

135

159

131

124

127

161

135

159

131

124

127

161

135

159

131

124

127

161

135

159

131

124

127

161

135

159

131

124

127

161

135

159

131

124

127

161

135

159

131

124

127

161

135

159

131

124

127

161

135

159

131

124

127

161

135

159

131

124

127

161

135

159

131

124

127

161

135

159

131

124

127

161

135

159

131

124

127

161

135

159

131

124

127

161

135

159

131

124

127

161

135

159

131

124

127

161

135

159

131

124

127

161

135

159

131

124

127

161

135

159

131

124

127

161

135

159

131

124

127

161

135

159

131

124

127

161

135

159

131

124

127

161

135

159

131

124

127

161

135

159

131

124

127

161

135

159

131

124

127

161

135

159

131

124

127

161

135

159

131

124

127

161

135

159

131

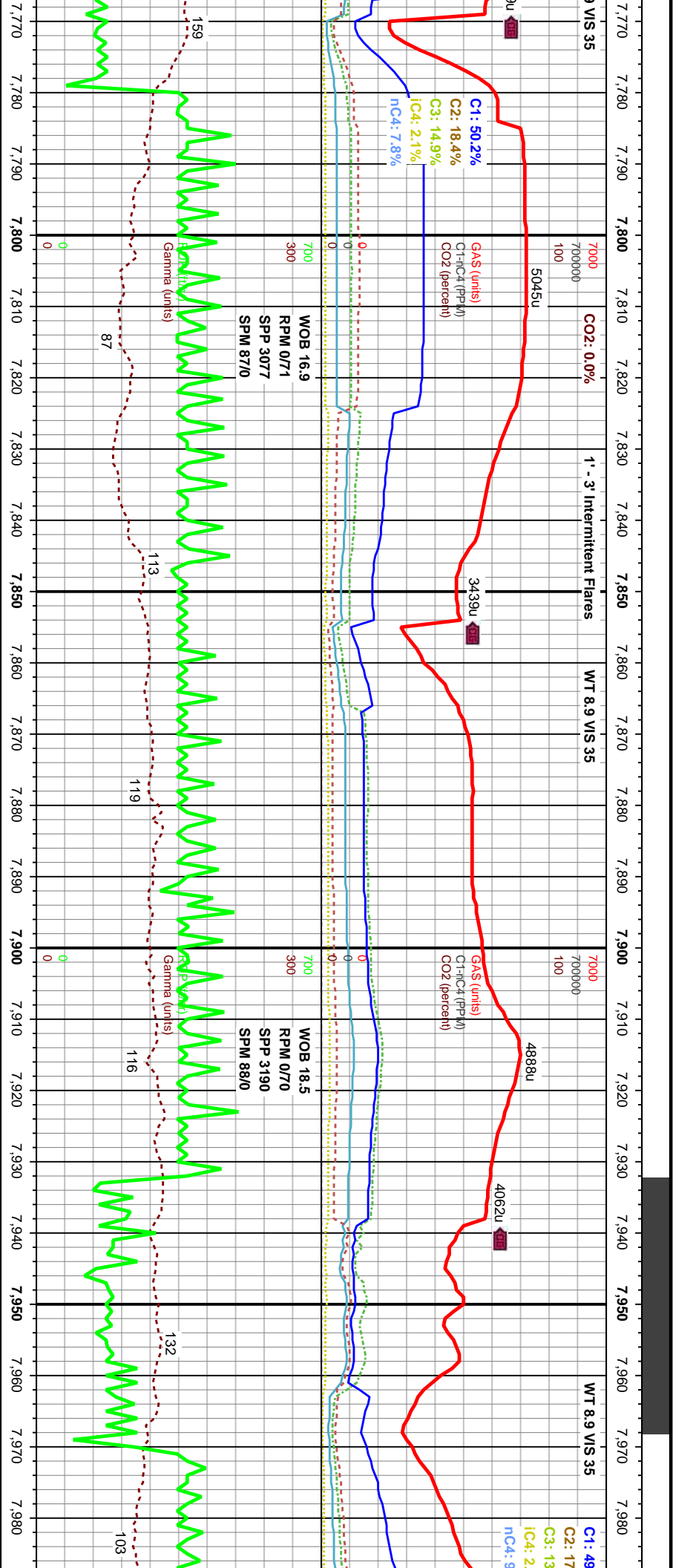
124

127

161

135

159



MD: 7.799' TVD: 6,491.43' Inclination: 89.22° Azimuth: 180°		MD: 7.884' TVD: 6,491.77' Inclination: 90.33° Azimuth: 179.85°		MD: 7.970' TVD: 6,491.71' Inclination: 89.74° Azimuth: 180.77°	
TVD (ft)		TVD (ft)		TVD (ft)	
85% CHK: m-dtk brn, dtk gy/brn, gy/wh, frm-sft, sb occ brt, sb blk, rthy lstr, v calc, sl brn/bk str, dull		80% CHK: dtk brn, dtk gy/brn, gy/wh, frm-sft, occ brt, sb blk, rthy lstr, v calc, sl brn/bk str, dull		80% CHK: brn/len, dtk gy/brn, gy/wh, frm-sft, frm occ brt, sb blk, rthy lstr, v calc, sl brn/bk str, dull	
dull yel flor, lt milky cut		yel flor, lt milky cut		dull yel flor, lt milky cut	
15% MARL: dtk gy, m-dtk brn/gy, blk, frm-sft, sb pty-sb blk, rthy lstr, intbnd carb mat, v calc, tr foss, tr pyr		20% MARL: dtk gy, dtk brn/gy, blk, frm-sft, sb pty-sb blk, rthy lstr, intbnd carb mat, v calc, tr foss, tr pyr		20% MARL: dtk gy, dtk brn/gy, blk, frm-sft, sb pty-sb blk, rthy lstr, intbnd carb mat, v calc, tr pyr	

8,210 8,220 8,230 8,240 8,250 8,260 8,270 8,280 8,290 8,300 8,310 8,320 8,330 8,340 8,350 8,360 8,370 8,380 8,390 8,400 8,410 8,420

CO2: 1.6% 1' - 3' Intermitent Flares 24/2015 WT 9.0 VIS 37 WT 9.0 VIS 38 CO2: 0.7%

5776u 5881u 9268u 6060u 6016u

Gas (units) C1: 36.9% C2: 10.8% C3: 20.9% iC4: 3.5% nC4: 15.0%

CH4 (PPM) CO2 (percent) CH4 (PPM) CO2 (percent) CH4 (PPM) CO2 (percent)

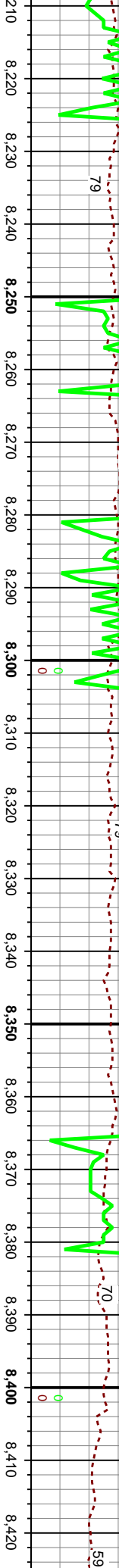
WOB 33.0 RPM 0/0 SPP 2596 SPM 86/0 Bit #: 4 Size: 6 1/8" Mfr.: Varel Type: VS513DCU Depth In: 8,250' Depth Out: 11,108' Jets: 5X22 S/N: 4008149

WOB 15.2 RPM 0/71 SPP 3104 SPM 0/88

WOB 19.6 RPM 0/76 SPP 3256 SPM 0/88

ROP (in/hr) Gamma (units) ROP (in/hr) Gamma (units) ROP (in/hr) Gamma (units)

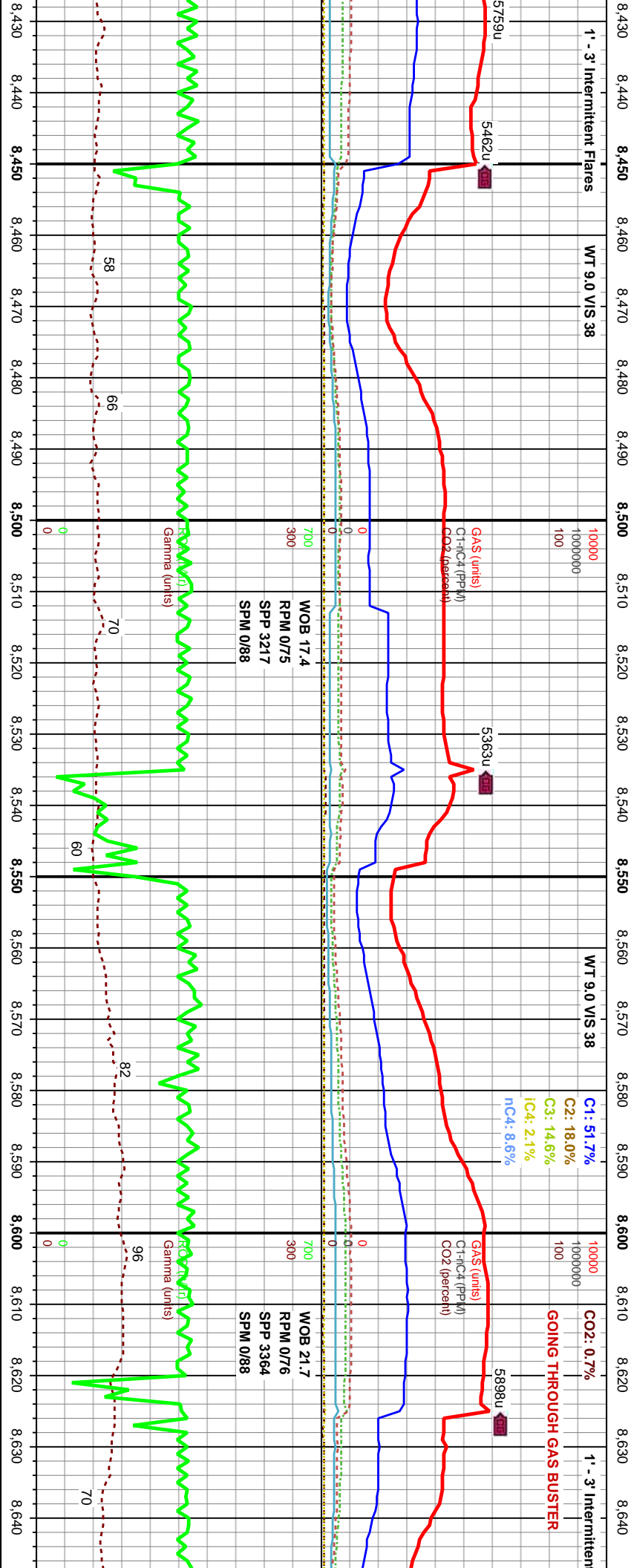
79 90 79 89 70 59



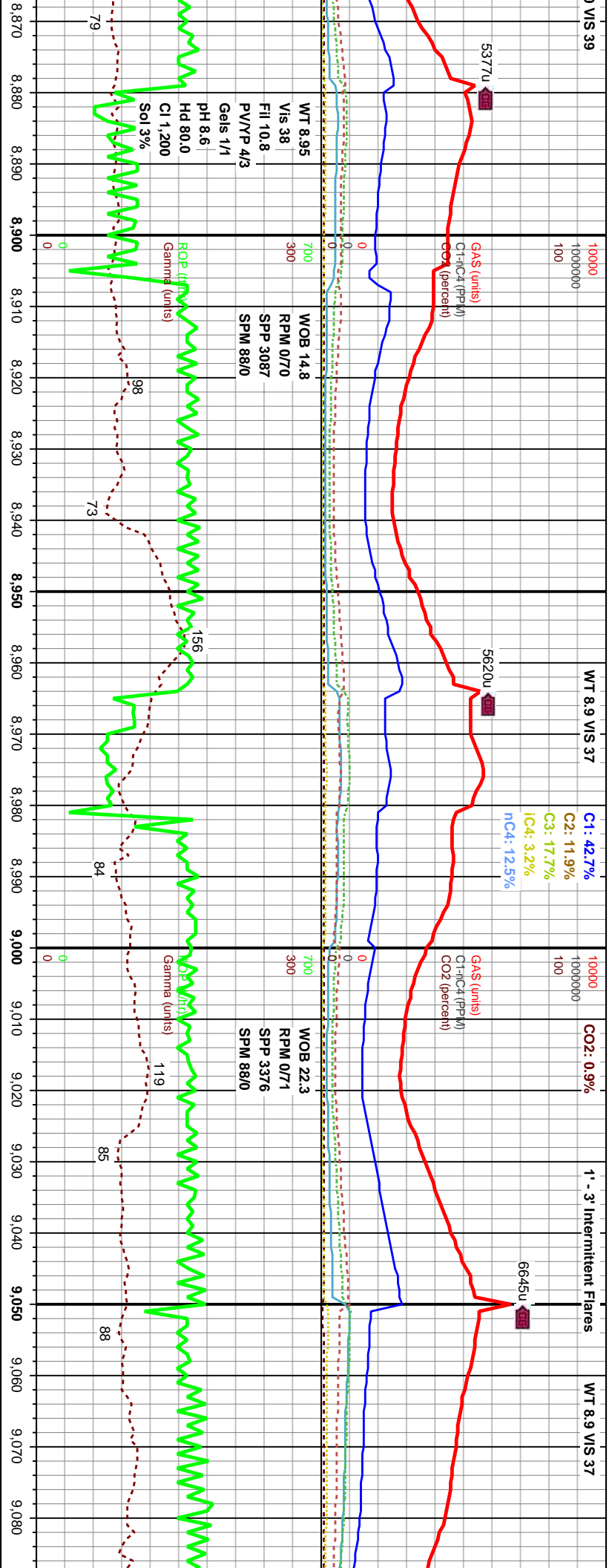
MD: 8,227' TVD: 6,493.15' Inclination: 90.21° Azimuth: 178.27° MD: 8,312' TVD: 6,493.18' Inclination: 89.75° Azimuth: 178.34° MD: 8,398' TVD: 6,493.98' Inclination: 89.19° Azimuth: 178.36°

95% CHK: brn-tan, lt-m gy/brn, gy/wh, frm-sft, occ brit-hd, sb blk, rthy lstr, v calc, sl brn/bk stn, dull yel flor, lt mky cut 100% CHK: dk brn-bm, lt gy/tan, frm-sft, occ brit-hd, sb blk, rthy lstr, v calc, sl brn/bk stn, dull yel flor, lt mky cut 100% CHK: dk brn, brn/gy, lt gy/tan, frm-sft, occ brit-hd, sb blk, rthy lstr, v calc, sl brn/bk stn, dull yel flor, lt mky cut

5% MARL: dk gy, blk, frm-sft, sb ply-sb blk, rthy lstr, inbodd carb mat, v calc, tr foss, tr pyr Tr MARL: dk gy, blk, frm-sft, sb ply-sb blk, rthy lstr, inbodd carb mat, v calc, tr foss, tr pyr Tr MARL: dk gy, blk, frm-sft, sb ply-sb blk, rthy lstr, inbodd carb mat, v calc, tr foss, tr pyr



<div><div></div><div></div><div></div><div></div><div></div><div></div><div></div><div></div><div></div><div></div><div></div><div></div><div></div><div></div><div></div><div></div><div></div><div></div><div></div><div></div><div></div><div></div><div></div><div></div><div></div><div></div><div></div><div></div><div></div><div></div><div></div><div></div><div></div><div></div><div></div><div></div><div></div><div></div><div></div><div></div><div></div><div></div><div></div><div></div><div></div><div></div><div></div><div></div><div></div><div></div><div></div><div></div><div></div><div></div><div></div><div></div><div></div><div></div><div></div><div></div><div></div><div></div><div></div><div></div><div></div><div></div><div></div><div></div><div></div><div></div><div></div><div></div><div></div><div></div><div></div><div></div><div></div><div></div><div></div><div></div><div></div><div></div><div></div><div></div><div></div><div></div><div></div><div></div><div></div><div></div><div></div><div></div><div></div><div></div><div></div><div></div><div></div><div></div><div></div><div></div><div></div><div></div><div></div><div></div><div></div><div></div><div></div><div></div><div></div><div></div><div></div><div></div><div></div><div></div><div></div><div></div><div></div><div></div><div></div><div></div><div></div><div></div><div></div><div></div><div></div><div></div><div></div><div></div><div></div><div></div><div></div><div></div><div></div><div></div><div></div><div></div><div></div><div></div><div></div><div></div><div></div><div></div><div></div><div></div><div></div><div></div><div></div><div></div><div></div><div></div><div></div><div></div><div></div><div></div><div></div><div></div><div></div><div></div><div></div><div></div><div></div><div></div><div></div><div></div><div></div><div></div><div></div><div></div><div></div><div></div><div></div><div></div><div></div><div></div><div></div><div></div><div></div><div></div><div></div><div></div><div></div><div></div><div></div><div></div><div></div><div></div><div></div><div></div><div></div><div></div><div></div><div></div><div></div><div></div><div></div><div></div><div></div><div></div><div></div><div></div><div></div><div></div><div></div><div></div><div></div><div></div><div></div><div></div><div></div><div></div><div></div><div></div><div></div><div></div><div></div><div></div><div></div><div></div><div></div><div></div><div></div><div></div><div></div><div></div><div></div><div></div><div></div><div></div><div></div><div></div><div></div><div></div><div></div><div></div><div></div><div></div><div></div><div></div><div></div><div></div><div></div><div></div><div></div><div></div><div></div><div></div><div></div><div></div><div></div><div></div><div></div><div></div><div></div><div></div><div></div><div></div><div></div><div></div><div></div><div></div><div></div><div></div><div></div><div></div><div></div><div></div><div></div><div></div><div></div><div></div><div></div><div></div><div></div><div></div><div></div><div></div><div></div><div></div><div></div><div></div><div></div><div></div><div></div><div></div><div></div><div></div><div></div><div></div><div></div><div></div><div></div><div></div><div></div><div></div><div></div><div></div><div></div><div></div><div></div><div></div><div></div><div></div><div></div><div></div><div></div><div></div><div></div><div></div><div></div><div></div><div></div><div></div><div></div><div></div><div></div><div></div><div></div><div></div><div></div><div></div><div></div><div></div><div></div><div></div><div></div><div></div><div></div><div></div><div></div><div></div><div></div><div></div><div></div><div></div><div></div><div></div><div></div><div></div><div></div><div></div><div></div><div></div><div></div><div></div><div></div><div></div><div></div><div></div><div></div><div></div><div></div><div></div><div></div><div></div><div></div><div></div><div></div><div></div><div></div><div></div><div></div><div></div><div></div><div></div><div></div><div></div><div></div><div></div><div></div><div></div><div></div><div></div><div></div><div></div><div></div><div></div><div></div><div></div><div></div><div></div><div></div><div></div><div></div><div></div><div></div><div></div><div></div><div></div><div></div><div></div><div></div><div></div><div></div><div></div><div></div><div></div><div></div><div></div><div></div><div></div><div></div><div></div><div></div><div></div><div></div><div></div><div></div><div></div><div></div><div></div><div></div><div></div><div></div><div></div><div></div><div></div><div></div><div></div><div></div><div></div><div></div><div></div><div></div><div></div><div></div><div></div><div></div><div></div><div></div><div></div><div></div><div></div><div></div><div></div><div></div><div></div><div></div><div></div><div></div><div></div><div></div><div></div><div></div><div></div><div></div><div></div><div></div><div></div><div></div><div></div><div></div><div></div><div></div><div></div><div></div><div></div><div></div><div></div><div></div><div></div><div></div><div></div><div></div><div></div><div></div><div></div><div></div><div></div><div></div><div></div><div></div><div></div><div></div><div></div><div></div><div></div><div></div><div></div><div></div><div></div><div></div><div></div><div></div><div></div><div></div><div></div><div></div><div></div><div></div><div></div><div></div><div></div><div></div><div></div><div></div><div></div><div></div><div></div><div></div><div></div><div></div><div></div><div></div><div></div><div></div><div></div><div></div><div></div><div></div><div></div><div></div><div></div><div></div><div></div><div></div><div></div><div></div><div></div><div></div><div></div><div></div><div></div><div></div><div></div><div></div><div></div><div></div><div></div><div></div><div></div><div></div><div></div><div></div><div></div><div></div><div></div><div></div><div></div><div></div><div></div><div></div><div></div><div></div><div></div><div></div><div></div><div></div><div></div><div></div><div></div><div></div><div></div><div></div><div></div><div></div><div></div><div></div><div></div><div></div><div></div><div></div><div></div><div></div><div></div><div></div><div></div><div></div><div></div><div></div><div></div><div></div><div></div><div></div><div></div><div></div><div></div><div></div><div></div><div></div><div></div><div></div><div></div><div></div><div></div><div></div><div></div><div></div><div></div><div></div><div></div><div></div><div></div><div></div><div></div><div></div><div></div><div></div><div></div><div></div><div></div><div></div><div></div><div></div><div></div><div></div><div></div><div></div><div></div><div></div><div></div><div></div><div></div><div></div><div></div><div></div><div></div><div></div><div></div><div></div><div></div><div></div><div></div><div></div><div></div><div></div><div></div><div></div><div></div><div></div><div></div><div></div><div></div><div></div><div></div><div></div><div></div><div></div><div></div><div></div><div></div><div></div><div></div><div></div><div></div><div></div><div></div><div></div><div></div><div></div><div></div><div></div><div></div><div></div><div></div><div></div><div></div><div></div><div></div><div></div><div></div><div></div><div></div><div></div><div></div><div></div><div></div><div></div><div></div><div></div><div></div><div></div><div></div><div></div><div></div><div></div><div></div><div></div><div></div><div></div><div></div><div></div><div></div><div></div><div></div><div></div><div></div><div></div><div></div><div></div><div></div><div></div><div></div><div></div><div></div><div></div><div></div><div></div><div></div><div></div><div></div><div></div><div></div><div></div><div></div><div></div><div></div><div></div><div></div><div></div><div></div><div></div><div></div><div></div><div></div><div></div><div></div><div></div><div></div><div></div><div></div><div></div><div></div><div></div><div></div><div></div><div></div><div></div><div></div><div></div><div></div><div></div><div></div><div></div><div></div><div></div><div></div><div></div><div></div><div></div><div></div><div></div><div></div><div></div><div></div><div></div><div></div><div></div><div></div><div></div><div></div><div></div><div></div><div></div><div></div><div></div><div></div><div></div><div></div><div></div><div></div><div></div><div></div><div></div><div></div><div></div><div></div><div></div><div></div><div></div><div></div><div></div><div></div><div></div><div></div><div></div><div></div><div></div><div></div><div></div><div></div><div></div><div></div><div></div><div></div><div></div><div></div><div></div><div></div><div></div><div></div><div></div><div></div><div></div><div></div><div></div><div></div><div></div><div></div><div></div><div></div><div></div><div></div><div></div><div></div><div></div><div></div><div></div><div></div><div></div><div></div><div></div><div></div><div></div><div></div><div></div><div></div><div></div><div></div><div></div><div></div><div></div><div></div><div></div><div></div><div></div><div></div><div></div><div></div><div></div><div></div><div></div><div></div><div></div><div></div><div></div><div></div><div></div><div></div><div></div><div></div><div></div><div></div><div></div><div></div><div></div><div></div><div></div><div></div><div></div><div></div><div></div><div></div><div></div><div></div><div></div><div></div><div></div><div></div><div></div><div></div><div></div><div></div><div></div><div></div><div></div><div></div><div></div><div></div><div></div><div></div><div></div><div></div><div></div><div></div><div></div><div></div><div></div><div></div><div></div><div></div><div></div><div></div><div></div><div></div><div></div><div></div><div></div><div></div><div></div><div></div><div></div><div></div><div></div><div></div><div></div><div></div><div></div><div></div><div></div><div></div><div></div><div></div><div></div><div></div><div></div><div></div><div></div><div></div><div></div><div></div><div></div><div></div><div></div><div></div><div></div><div></div><div></div><div></div><div></div><div></div><div></div><div></div><div></div><div></div><div></div><div></div><div></div><div></div><div></div><div></div><div></div><div></div><div></div><div></div><div></div><div></div><div></div><div></div><div></div><div></div><div></div><div></div><div></div><div></div><div></div><div></div><div></div><div></div><div></div><div></div><div></div><div></div><div></div><div></div><div></div><div></div><div></div><div></div><div></div><div></div><div></div><div></div><div></div><div></div><div></div><div></div><div></div><div></div><div></div><div></div><div></div><div></div><div></div><div></div><div></div><div></div><div></div><div></div><div></div><div></div><div></div><div></div><div></div><div></div><div></div><div></div><div></div><div></div><div></div><div></div><div></div><div></div><div></div><div></div><div></div><div></div><div></div><div></div><div></div><div></div><div></div><div></div><div></div><div></div><div></div><div></div><div></div><div></div><div></div><div></div><div></div><div></div><div></div><div></div><div></div><div></div><div></div><div></div><div></div><div></div><div></div><div></div><div></div><div></div><div></div><div></div><div></div><div></div><div></div><div></div><div></div><div></div><div></div><div></div><div></div><div></div><div></div><div></div><div></div><div></div><div></div><div></div><div></div><div></div><div></div><div></div><div></div><div></div><div></div><div></div><div></div><div></div><div></div><div></div><div></div><div></div><div></div><div></div><div></div><div></div><div></div><div></div><div></div><div></div><div></div><div></div><div></div><div></div><div></div><div></div><div></div><div></div><div></div><div></div><div></div><div></div><div></div><div></div><div></div><div></div><div></div><div></div><div></div><div></div><div></div><div></div><div></div><div></div><div></div><div></div><div></div><div></div><div></div><div></div><div></div><div></div><div></div><div></div><div></div><div></div><div></div><div></div><div></div><div></div><div></div><div></div><div></div><div></div><div></div><div></div><div></div><div></div><div></div><div></div><div></div><div></div><div></div><div></div><div></div><div></div><div></div><div></div><div></div><div></div><div></div><div></div><div></div><div></div><div></div><div></div><div></div><div></div><div></div><div></div><div></div><div></div><div></div><div></div><div></div><div></div><div></div><div></div><div></div><div></div><div></div><div></div><div></div><div></div><div></div><div></div><div></div><div></div><div></div><div></div><div></div><div></div><div></div><div></div><div></div><div></div><div></div><div></div><div></div><div></div><div></div><div></div><div></div><div></div><div></div><div></div><div></div><div></div><div></div><div></div><div></div><div></div><div></div><div></div><div></div><div></div><div></div><div></div><div></div><div></div><div></div><div></div><div></div><div></div><div></div><div></div><div></div><div></div><div></div><div></div><div></div><div></div><div></div><div></div><div></div><div></div><div></div><div></div><div></div><div></div><div></div><div></div><div></div><div></div><div></div><div></div><div></div><div></div><div></div><div></div><div></div><div></div><div></div><div></div><div></div><div></div><div></div><div></div><div></div><div></div><div></div><div></div><div></div><div></div><div></div><div></div><div></div></div>	
--	--



VIS 39		10000 1000000 100	WT 8.9 VIS 37	10000 1000000 100	CO ₂ : 0.9%	1' - 3' Intermitent Flares	WT 8.9 VIS 37
5377u		Gas (units) CH ₄ (PPM) CO ₂ (percent)	5620u	Gas (units) CH ₄ (PPM) CO ₂ (percent)		6645u	
WT 8.95 Vis 38 Fil 10.8 PV/PP 4/3 Gels 1/1 pH 8.6 Hd 80.0 CI 1,200 Sol 3%			WOB 14.8 RPM 070 SPP 3087 SPM 88/0		WOB 22.3 RPM 071 SPP 3376 SPM 88/0		
ROP (ft/hr) Gamma (units)							
79							
8,870							
8,880							
8,890							
8,900							
8,910							
8,920							
8,930							
8,940							
8,950							
8,960							
8,970							
8,980							
8,990							
9,000							
9,010							
9,020							
9,030							
9,040							
9,050							
9,060							
9,070							
9,080							
5300							
MD: 8.912' TVD: 6.492.27 Inclination: 89.84° Azimuth: 179.73°			MD: 8.997' TVD: 6.492.85 Inclination: 89.38° Azimuth: 180.05°			MD: 9.083' TVD: 6.493.22 Inclination: 90.0 Azimuth: 179.0	
TVD (ft)			TVD (ft)			TVD (ft)	
85% CHK: dk brn, dk brn/gy, lt gy/tan, frm-sft, occ brt-hd, sb blk, rthy lstr, v calc, sl brn/blk str, dull yel flr, lt mlky cut			65% CHK: dk brn, dk brn/gy, lt gy/tan, frm-sft, occ brt-hd, sb blk, rthy lstr, v calc, sl brn/blk str, dull yel flr, lt mlky cut			90% CHK: dk brn-brn/gy, lt gy/tan, frm-sft, occ brt-hd, sb blk, rthy lstr, v calc, sl brn/blk str, dull yel flr, lt mlky cut	
15% MARL: dk brn, blk, frm-sft, sb pty-sb blk, rthy lstr, intbnd carb mat, v calc, tr foss, tr pyr			35% MARL: dk brn, blk, frm-sft, sb pty-sb blk, rthy lstr, intbnd carb mat, v calc, tr foss, tr pyr			15% MARL: dk brn, blk, frm-sft, sb pty-sb blk, rthy lstr, intbnd carb mat, v calc, tr foss, tr pyr	
7800			7800			7800	

9,090 9,100 9,110 9,120 9,130 9,140 9,150 9,160 9,170 9,180 9,190 9,200 9,210 9,220 9,230 9,240 9,250 9,260 9,270 9,280 9,290 9,300

GOING THROUGH GAS BUSTER

WT 9.0 VIS 38

1' - 3' Intermittent Flares

WT 9.0 VIS 37

10000
1000000
100

10000
1000000
100

10000
1000000
100

GAS (units)
C1-IC4 (PPM)
CO2 (percent)

GAS (units)
C1-IC4 (PPM)
CO2 (percent)

GAS (units)
C1-IC4
CO2 (pe

C1: 50.6%
C2: 20.1%
C3: 18.3%
iC4: 1.7%
nC4: 9.2%

CO2: 1.0%

596

6012u

6341u

WOB 25.8
RPM 070
SP 3414
SPM 88/0

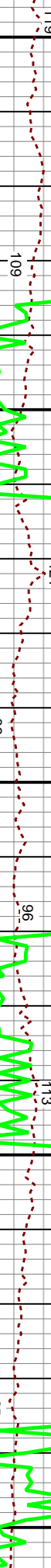
WOB 28.4
RPM 070
SP 3425
SPM 88/0

700
300

ROP (ft/hr)
Gamma (units)

ROP (ft/hr)
Gamma (units)

ROP (ft/hr)
Gamma



5300

5300

5300

MD: 9,169'
TVD: 6,493.04'
Inclination: 90.12°
Azimuth: 179.59°

MD: 9,254'
TVD: 6,492.93'
Inclination: 90.03°
Azimuth: 179.92°

TVD (ft)

TVD (ft)

TVD (ft)

70% CHK: dk brn-tan, brn/gy, lt gy/tan, frm-sft, occ brt-hd, sb blk, rthy lstr, v calc, sl brn/bk stn, dull yel flr, lt milky cut

100% CHK: dk gy/brn, brn-tan, lt gy/tan, frm-sft, occ brt-hd, sb blk, rthy lstr, v calc, sl brn/bk stn, dull yel flr, lt milky cut

80% CHK: dk gy/brn, dk brn, lt gy/tan, frm-sft, occ brt-hd, sb blk, rthy lstr, v calc, sl brn/bk stn, dull yel flr, lt milky cut

100% CHK: gy/brn, dk brn, lt gy/tan, frm-sft, occ brt-hd, sb blk, rthy lstr, v calc, sl brn/bk stn, dull yel flr, lt milky cut

30% MARL: dk brn, blk, frm-sft, sb pily-sb blk, rthy lstr, inbodd carb mat, v calc, tr foss, tr pyr

Tr MARL: dk brn, blk, frm-sft, sb pily-sb blk, rthy lstr, inbodd carb mat, v calc, tr foss, tr pyr

20% MARL: dk brn, blk, frm-sft, sb pily-sb blk, rthy lstr, inbodd carb mat, v calc, tr foss, tr pyr

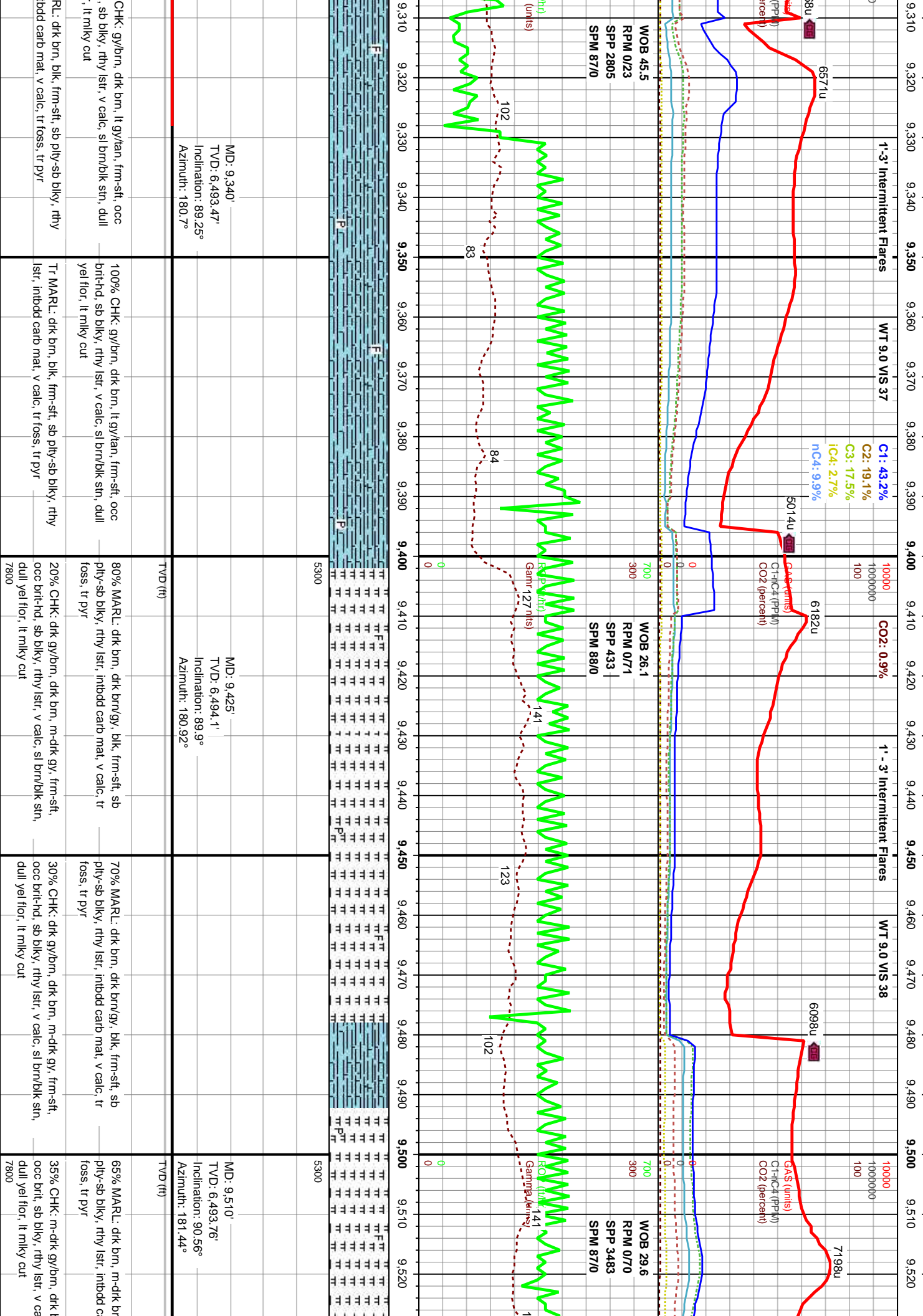
Tr MA lstr, inbodd carb mat, v calc, tr foss, tr pyr

7800

7800

7800





9,530 9,540 9,550 9,560 9,570 9,580 9,590 9,600 9,610 9,620 9,630 9,640 9,650 9,660 9,670 9,680 9,690 9,700 9,710 9,720 9,730 9,740

WT 9.0 VIS 38

CO2: 0.8%

1' - 4' Intermittent Flares

WT 9.1 VIS 38

GOING THROUGH GAS BUSTER

6340u

594u

6214u

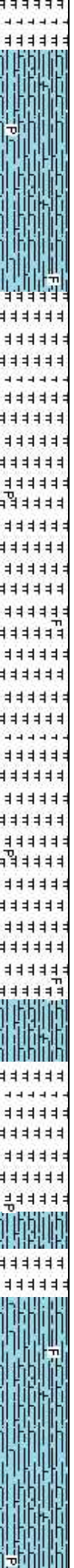
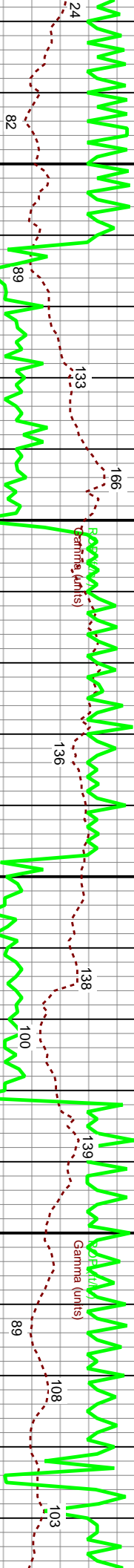
GAS (units)
C1-NC4 (PPM)
CO2 (percent)

GAS (units)
C1-NC4 (PPM)
CO2 (percent)

C1: 36.6%
C2: 16.2%
C3: 16.9%
nC4: 12.9%
iC4: 3.0%

WOB 21.1
RPM 0/71
SPM 3206
SPM 88/0

WOB 23.7
RPM 0/69
SPM 3342
SPM 88/0



MD: 9,595'
TVD: 6,492.64'
Inclination: 90.95°
Azimuth: 179.29°

MD: 9,681'
TVD: 6,493.13'
Inclination: 88.4°
Azimuth: 178.2°

TVD (ft)

TVD (ft)

60% MARL: dk brn, m-dk brn/gy, blk, frm-sft, sb
ply-sb blk, rthy lstr, intbdd carb mat, v calc, tr
foss, tr pyr

80% MARL: m-dk brn, m-dk brn/gy, blk, frm-sft,
sb ply-sb blk, rthy lstr, intbdd carb mat, v calc, tr
foss, tr pyr

60% MARL: m-dk brn, m-dk brn/gy, blk, frm-sft,
sb ply-sb blk, rthy lstr, intbdd carb mat, v calc, tr
foss, tr pyr

90% CHK: m gy/brn, brn, m-dk gy/wh, frm-sft, occ
brt, sb blk, rthy lstr, v calc, sl brn/blk str, dull yel
flor, lt mlky cut

40% CHK: m-dk gy/brn, dk brn, m-dk gy, frm-sft,
occ brt, sb blk, rthy lstr, v calc, sl brn/blk str,
dull yel flor, lt mlky cut

40% CHK: m-dk gy/brn, m-dk brn, m-dk gy/wh,
frm-sft, occ brt, sb blk, rthy lstr, v calc, sl brn/blk
str, dull yel flor, lt mlky cut

10% MARL: dk brn, dk brn/gy, blk, frm-sft, sb
ply-sb blk, rthy lstr, intbdd carb mat, v calc, tr
foss, tr pyr

brn, m-dk gy, frm-sft, carb mat, v calc, tr	60% MARL: dk brn, m-dk brn/gy, blk, frm-sft, sb ply-sb blk, rthy lstr, intbdd carb mat, v calc, tr foss, tr pyr	80% MARL: m-dk brn, m-dk brn/gy, blk, frm-sft, sb ply-sb blk, rthy lstr, intbdd carb mat, v calc, tr foss, tr pyr	40% CHK: m-dk gy/brn, dk brn, m-dk gy, frm-sft, occ brt, sb blk, rthy lstr, v calc, sl brn/blk str, dull yel flor, lt mlky cut	40% CHK: m-dk gy/brn, m-dk brn, m-dk gy/wh, frm-sft, occ brt, sb blk, rthy lstr, v calc, sl brn/blk str, dull yel flor, lt mlky cut	40% CHK: m-dk gy/brn, m-dk brn, m-dk gy/wh, frm-sft, occ brt, sb blk, rthy lstr, v calc, sl brn/blk str, dull yel flor, lt mlky cut	10% MARL: dk brn, dk brn/gy, blk, frm-sft, sb ply-sb blk, rthy lstr, intbdd carb mat, v calc, tr foss, tr pyr
--	---	---	--	---	---	---

9,750 9,760 9,770 9,780 9,790 9,800 9,810 9,820 9,830 9,840 9,850 9,860 9,870 9,880 9,890 9,900 9,910 9,920 9,930 9,940 9,950 9,960

WT 9.0 VIS 37

1" - 4" Intermitent Flares

WT 9.0 VIS 37

WT 9.1

C1: 33.8%
C2: 19.7%
C3: 22.2%
iC4: 3.6%
nC4: 12.4%

GAS (units)
C1-iC4 (PPM)
CO2 (percent)

GAS (units)
C1-iC4 (PPM)
CO2 (percent)

5717u

5575u

WOB 22.7
RPM 0/69
SPM 3459
SPM 0/88

WOB 13.7
RPM 0/70
SPM 3243
SPM 0/88

ROP (ft/hr)
Gamma (urpel)

ROP (ft/hr)
Gamma (urpel)

75 60 0 0

120 101 130 98

115 95 0 0

79 87

F

P

5300

P

F

P

5300

P

MD: 9,766'
TVD: 6,495.41'
Inclination: 88.52°
Azimuth: 177.96°

MD: 9,852'
TVD: 6,497.25'
Inclination: 89.04°
Azimuth: 178.06°

MD: 9,937'
TVD: 6,498.33'
Inclination: 89.5°
Azimuth: 178.38°

TVD (ft)

TVD (ft)

95% CHK: m gy/brn, brn, m-dtk gy/wh, frm-sft, occ
brlt, sb blkly, rthy lstr, v calc, sl brn/blk str, dull yel
flor, lt mlky cut

95% CHK: gy/brn, brn, m-dtk gy/wh, frm-sft, occ
brlt, sb blkly, rthy lstr, v calc, sl brn/blk str, dull yel
flor, lt mlky cut

95% CHK: gy/brn, brn, m-dtk gy/wh, frm-sft, occ
brlt, sb blkly, rthy lstr, v calc, sl brn/blk str, dull yel
flor, lt mlky cut

95% CHK: gy/brn, brn, m-dtk gy/wh, frm-sft, occ
brlt, sb blkly, rthy lstr, v calc, sl brn/blk str, dull yel
flor, lt mlky cut

95% CHK: gy/brn
brlt, sb blkly, rthy l
flor, lt mlky cut

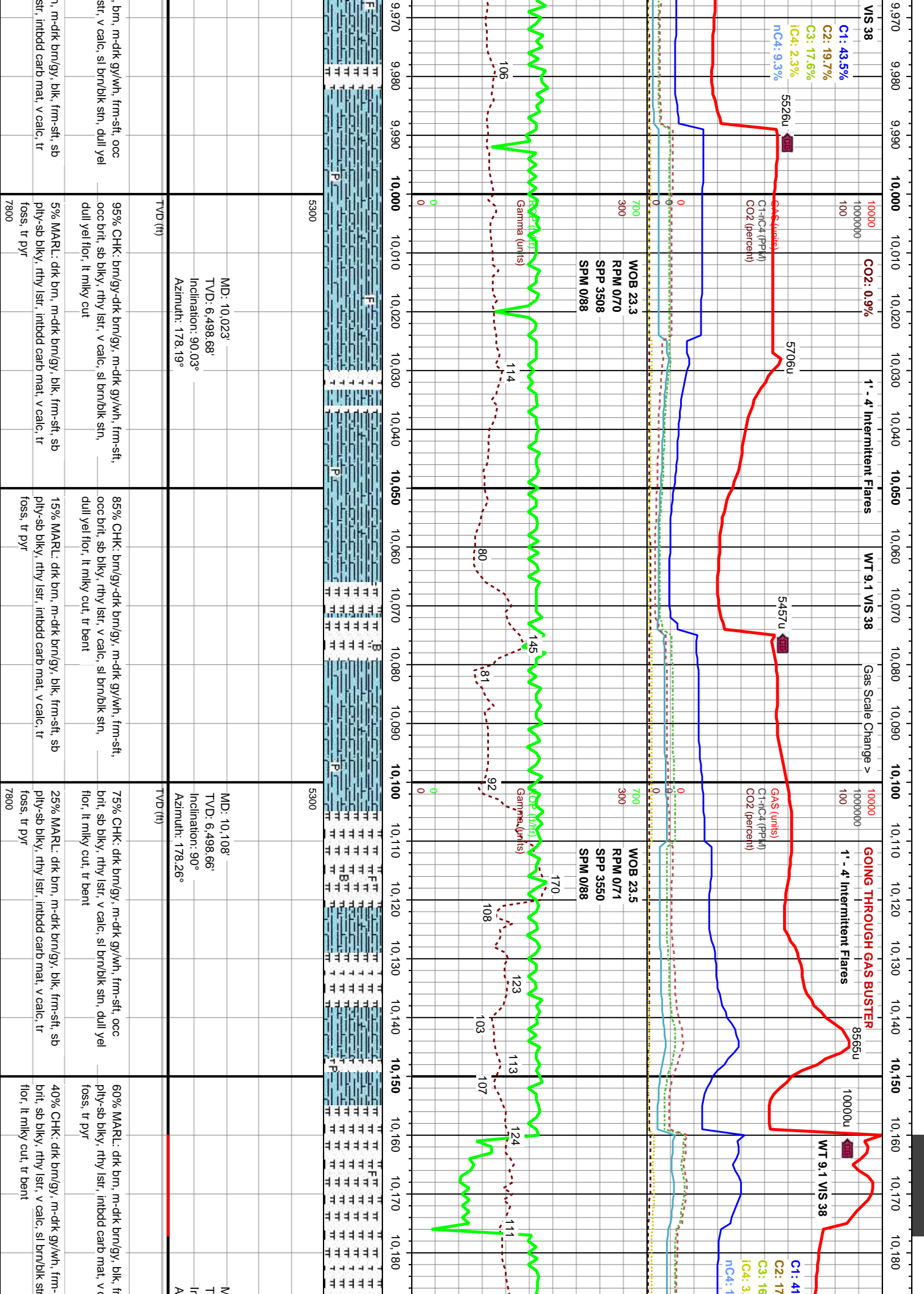
5% MARL: dtk brn, dtk brn/gy, blk, frm-sft, sb
ply-sb blkly, rthy lstr, imbdd carb mat, v calc, tr
foss, tr pyr

5% MARL: dtk brn, m-dtk brn/gy, blk, frm-sft, sb
ply-sb blkly, rthy lstr, imbdd carb mat, v calc, tr
foss, tr pyr

5% MARL: dtk brn, m-dtk brn/gy, blk, frm-sft, sb
ply-sb blkly, rthy lstr, imbdd carb mat, v calc, tr
foss, tr pyr

5% MARL: dtk brn, m-dtk brn/gy, blk, frm-sft, sb
ply-sb blkly, rthy lstr, imbdd carb mat, v calc, tr
foss, tr pyr

5% MARL: dtk brn
ply-sb blkly, rthy l
foss, tr pyr



10,630 10,640 10,650 10,660 10,670 10,680 10,690 10,700 10,710 10,720 10,730 10,740 10,750 10,760 10,770 10,780 10,790 10,800 10,810 10,820 10,830 10,840

H GAS BUSTER

1' - 4' Intermittent Flares

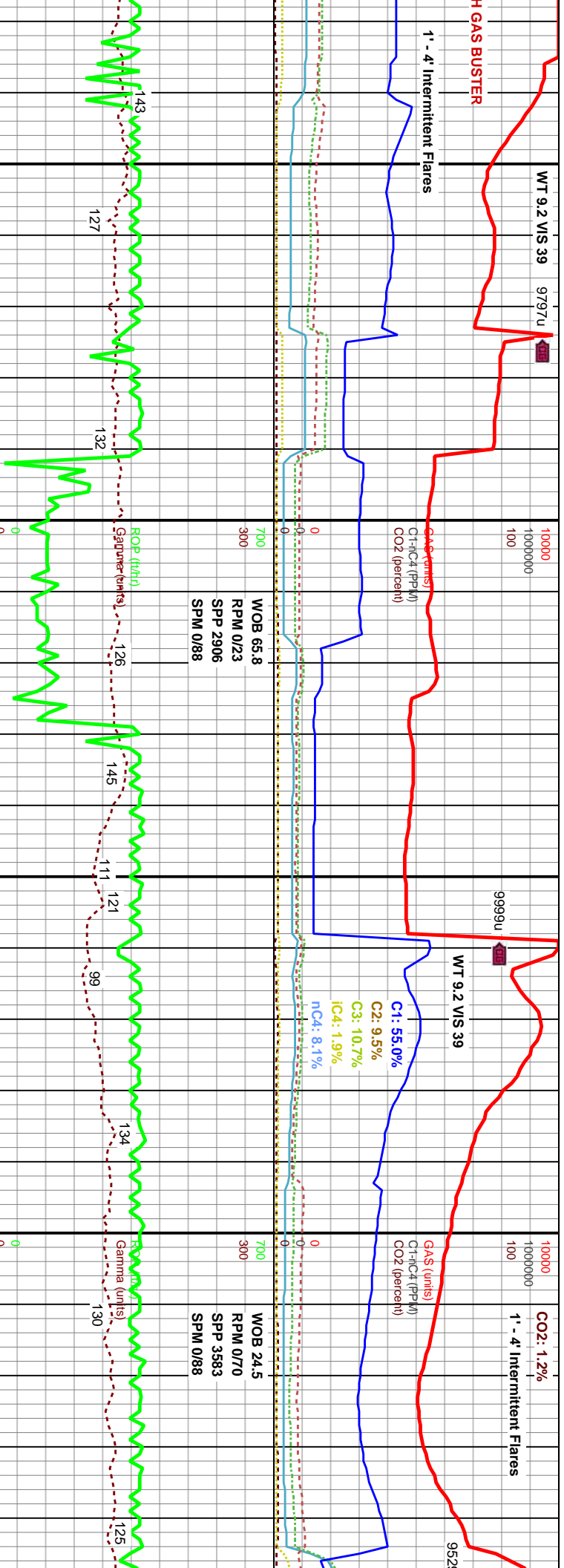
WT 9.2 VIS 39

WT 9.2 VIS 39

CO2: 1.2%
1' - 4' Intermittent Flares

WOB 65.8
RPM 0/23
SPP 2906
SPM 0/88

WOB 24.5
RPM 0/70
SPP 3583
SPM 0/88



MD: 10,707'
TVD: 6,494.69'
Inclination: 89.78°
Azimuth: 181.16°

MD: 10,793'
TVD: 6,495.85'
Inclination: 88.67°
Azimuth: 180.53°

60% MARL: dk brn, m-dk brn/gy, blk, frm-sft, sb ply-sb blk, rthy lstr, intbdd carb mat, v calc, tr foss, tr pyr	70% MARL: dk brn, m-dk brn/gy, blk, frm-sft, sb ply-sb blk, rthy lstr, intbdd carb mat, v calc, tr foss, tr pyr	70% MARL: dk brn/gy, blk, frm-sft, sb rthy lstr, intbdd carb mat, v calc, tr foss, tr pyr
40% CHK: gy/brn, brn-tan, gy/wh, frm-sft, occ brti, sb blk, rthy lstr, v calc, sl brn/blk stn, dull yel flr, lt milky cut, occ bent	30% CHK: gy/brn, brn-tan, gy/wh, frm-sft, occ brti, sb blk, rthy lstr, v calc, sl brn/blk stn, dull yel flr, lt milky cut, occ bent	25% CHK: gy/brn, brn-tan, gy/wh, frm-sft, occ brti, sb blk, rthy lstr, v calc, sl brn/blk stn, dull yel flr, lt milky cut, occ bent

