

NOBLE ENERGY INC.
 Anacapa 32-31
 SWNE 31-2N-64W
 2196' FNL & 1513' FEL
 WELD COUNTY, CO
 Wattenberg
CURRENT WELLBORE SCHEMATIC
 with PROPOSED P&A
 7/31/2015

API: 05-123-22116
 COGCC #

GL Elev: 4972'
 KB Elev: 4987'

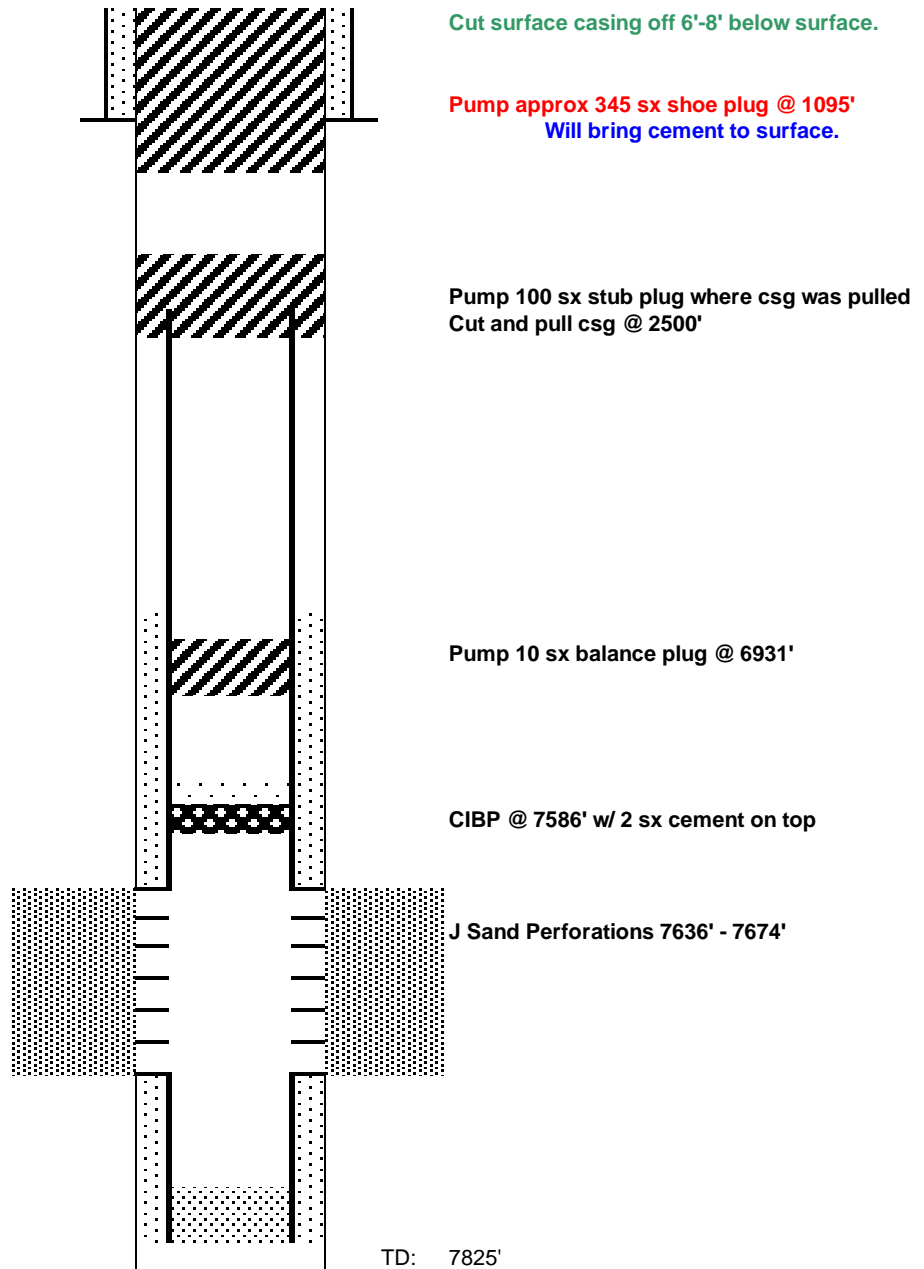
Spud Date: 1/16/2005

Surface Casing :
 8 5/8" 24# J-55 @ 995'
 Cement: 650
 TOC: Surface

TOC @ 6425

Nio Top 6931

Production Casing :
 4 1/2" 11.6# I-80 @ 7819'
 Cement: 200
 TD: 1/22/2005



Cut surface casing off 6'-8' below surface.

Pump approx 345 sx shoe plug @ 1095'
 Will bring cement to surface.

Pump 100 sx stub plug where csg was pulled
 Cut and pull csg @ 2500'

Pump 10 sx balance plug @ 6931'

CIBP @ 7586' w/ 2 sx cement on top

J Sand Perforations 7636' - 7674'

TD: 7825'