



DDC
3222 N. 6th Mile Rd
Casper, WY 82604

RM-141319

1":100' - TVD
12/27/2014 6:45:38 AM

Oper. Company: Noble Energy
Country: United States
State / Province: Colorado
County / Parish: Weld
Started: 12/23/2014 05:00 PM

API/UWI: 05-123-39814
Field: Wildcat
Well: Upchurch LD02-76-1AHN
Rig: H&P 326
Ended: 12/27/2014 04:30 AM

1 Inch TVD FINAL

Personnel

Day Hand: Chris Abbott
Night Hand: Chris Myers
Comp. Emp: DDC

Location

Latitude: 40 46' 29.928 N
Longitude: 103 50' 6.756 W
Elev. GL: 4742
Elev. DF: 30
Elev. KB: 4772

Hole Data

Size	From	To
13 3/4	0	1227
8 3/4	1227	6020
6 1/8	6020	9758

Casing Data

Size	From	To
9 5/8	0	1227
7	0	6020
4 1/2	0	9758

Bit Sizes

Size	From	To
13 3/4	0	1227
8 3/4	1227	6020
6 1/8	6020	9758

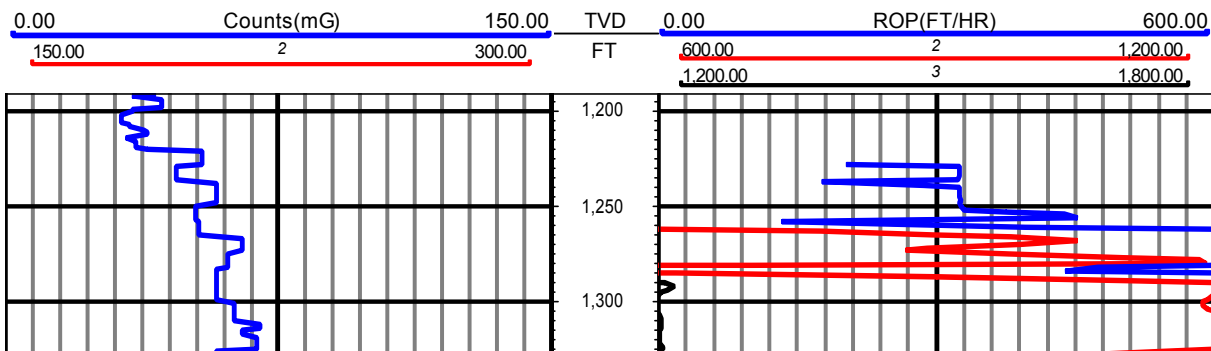
Mud Data

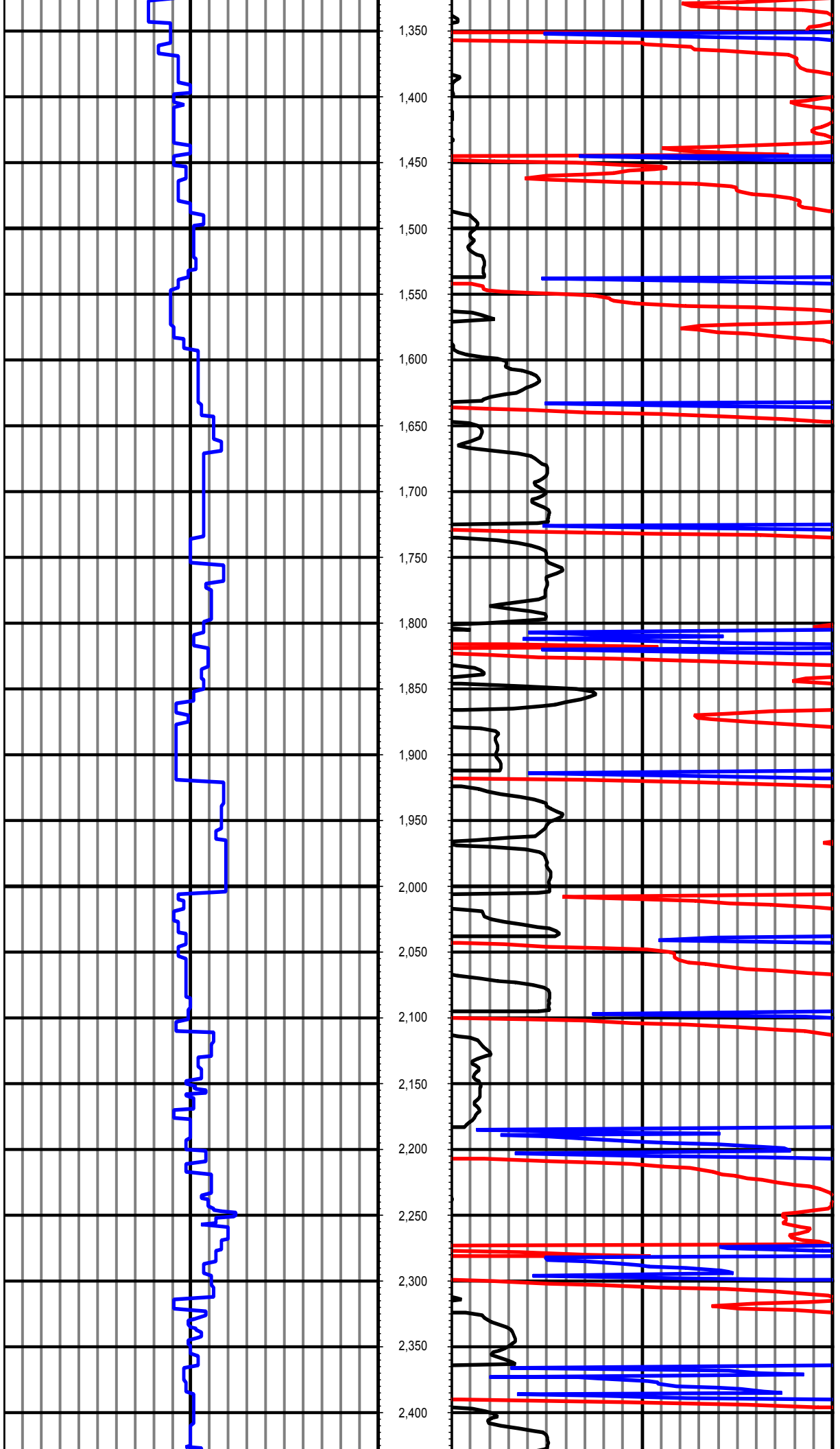
Type	Weight	Density	Viscosity	Rm	Rmf	Rmc	From	To
LSND	10.4	0	38				1227	9758

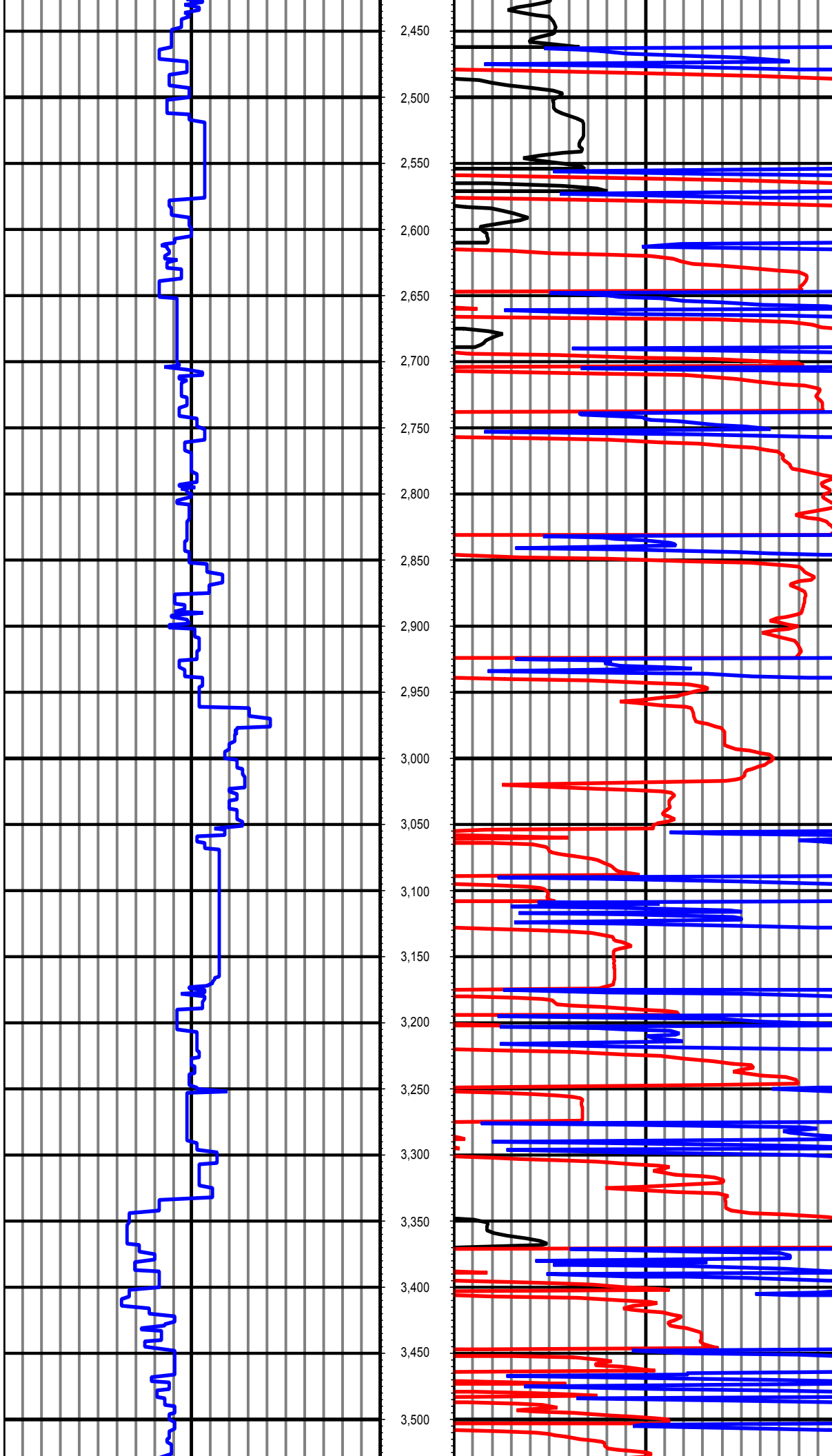
Tool Run Data

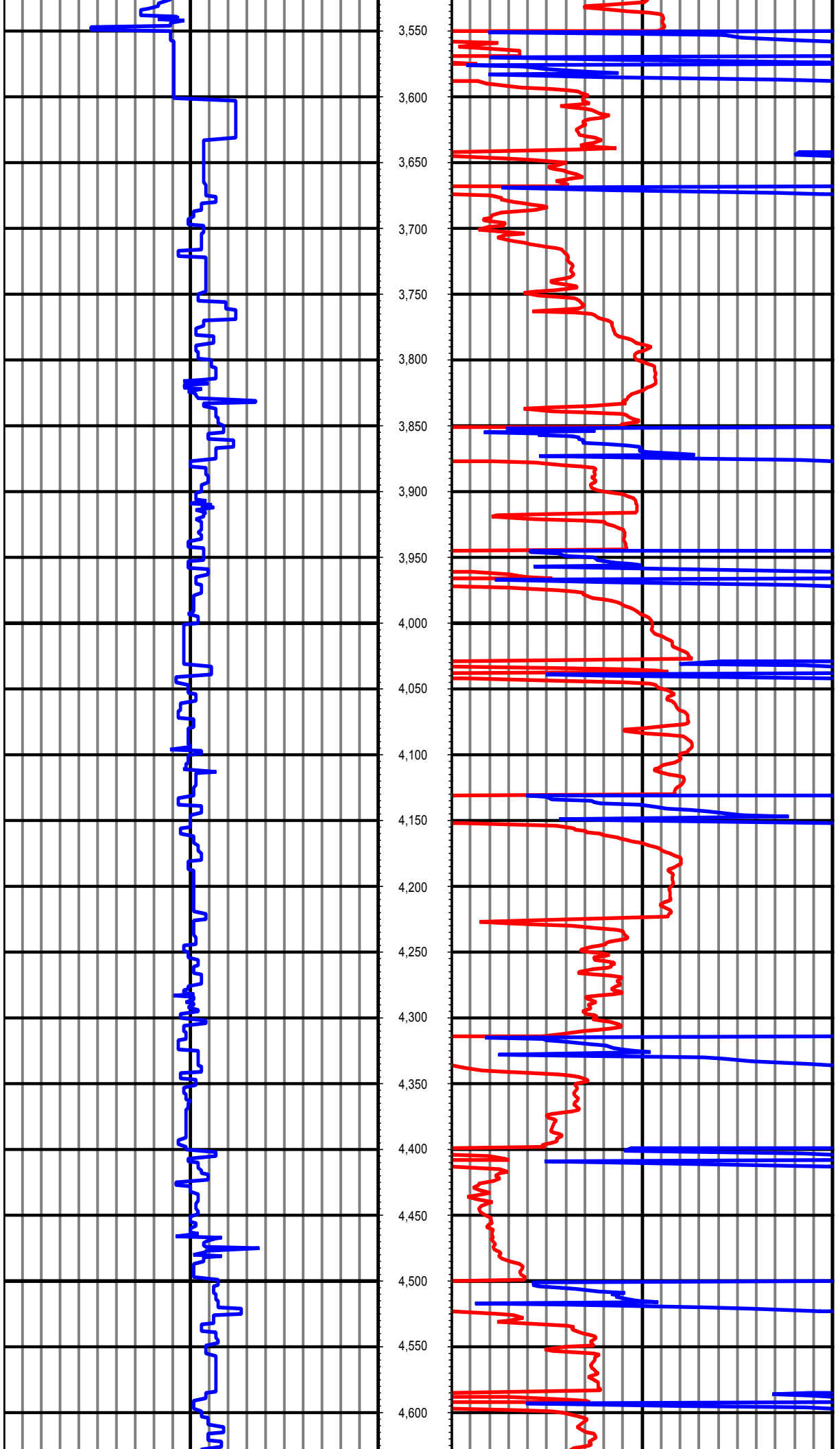
Serial Number	Gamma Offset	Resist. Offset	Start Time	Start Depth	End Time	End Depth
205	38	0	12/23/2014 5:00:02 PM	1227	12/24/2014 1:30:02 PM	6020
205	37	0	12/25/2014 10:00:10 PM	6020	12/27/2014 4:30:10 PM	9758

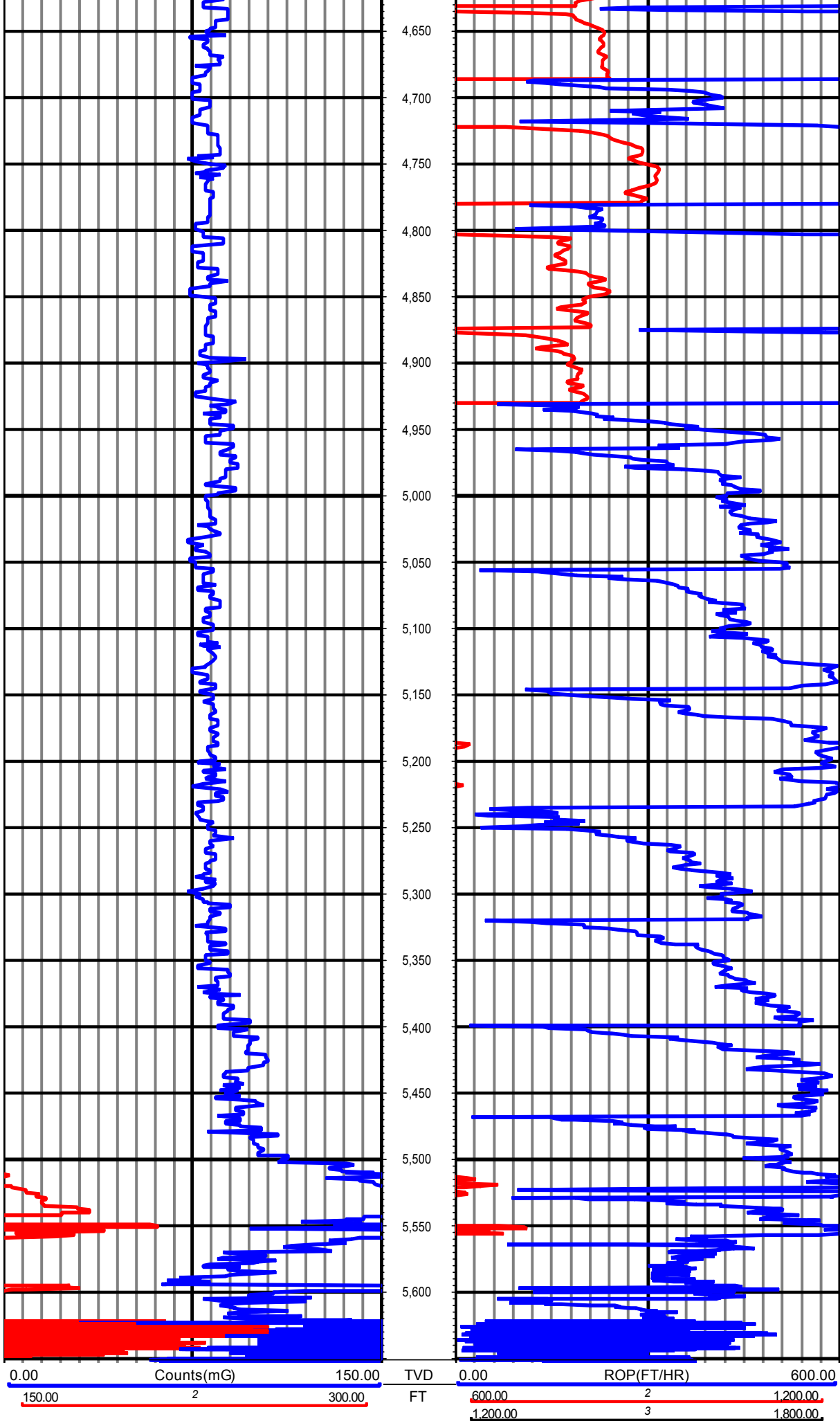
All interpretations are opinions based on inferences from electrical or other measurements and we cannot and do not guarantee the accuracy or correctness of any interpretation, and we shall not except in the case of gross or willful negligence on our part, be liable or responsible for any loss, cost damages or expenses incurred or sustained by anyone resulting from an interpretation made by any of our officers, agents, or employees.

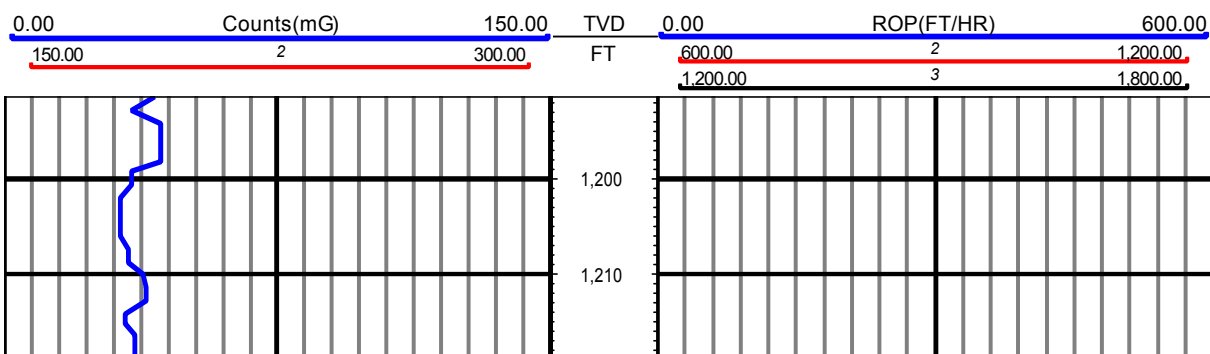


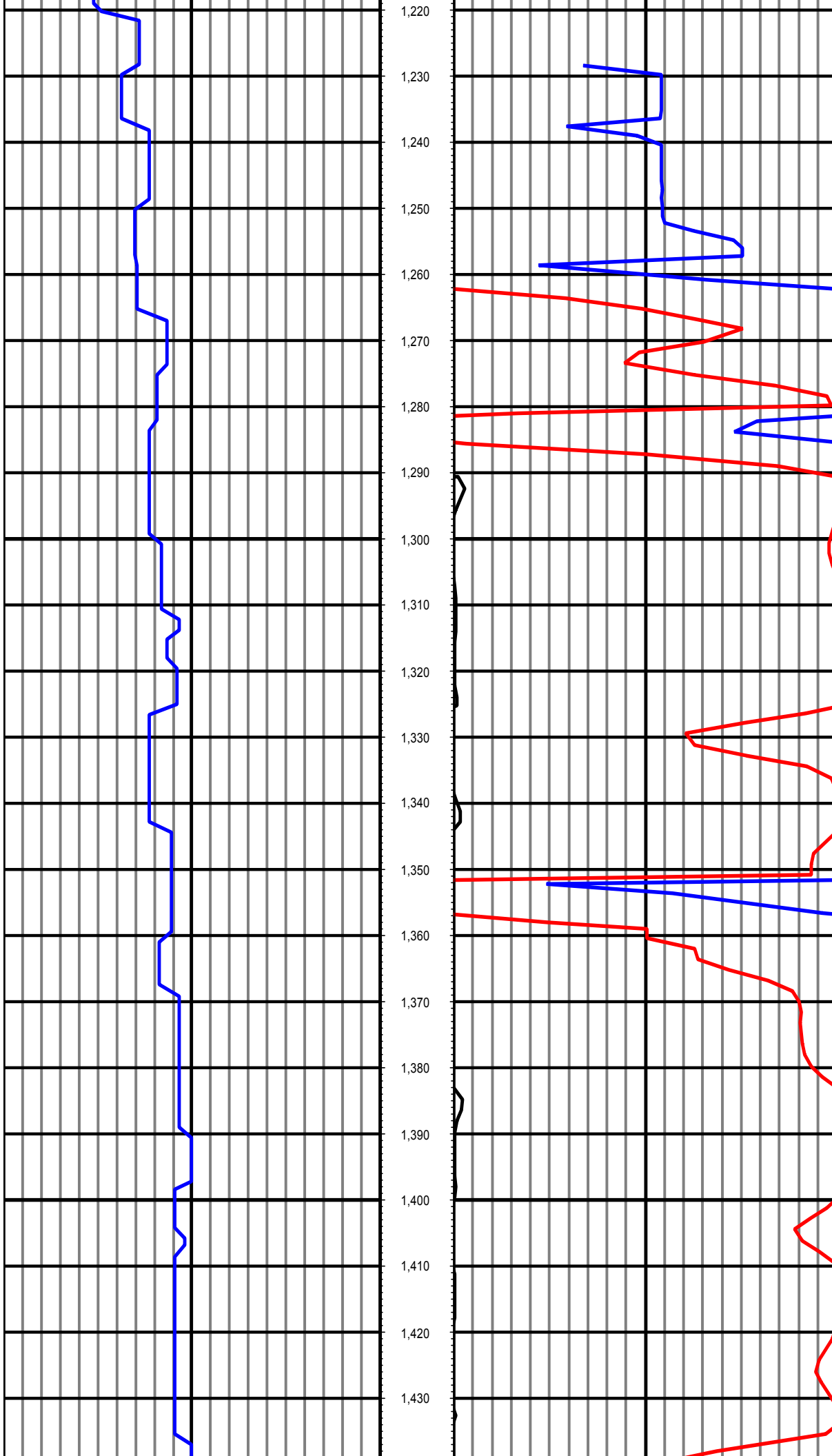


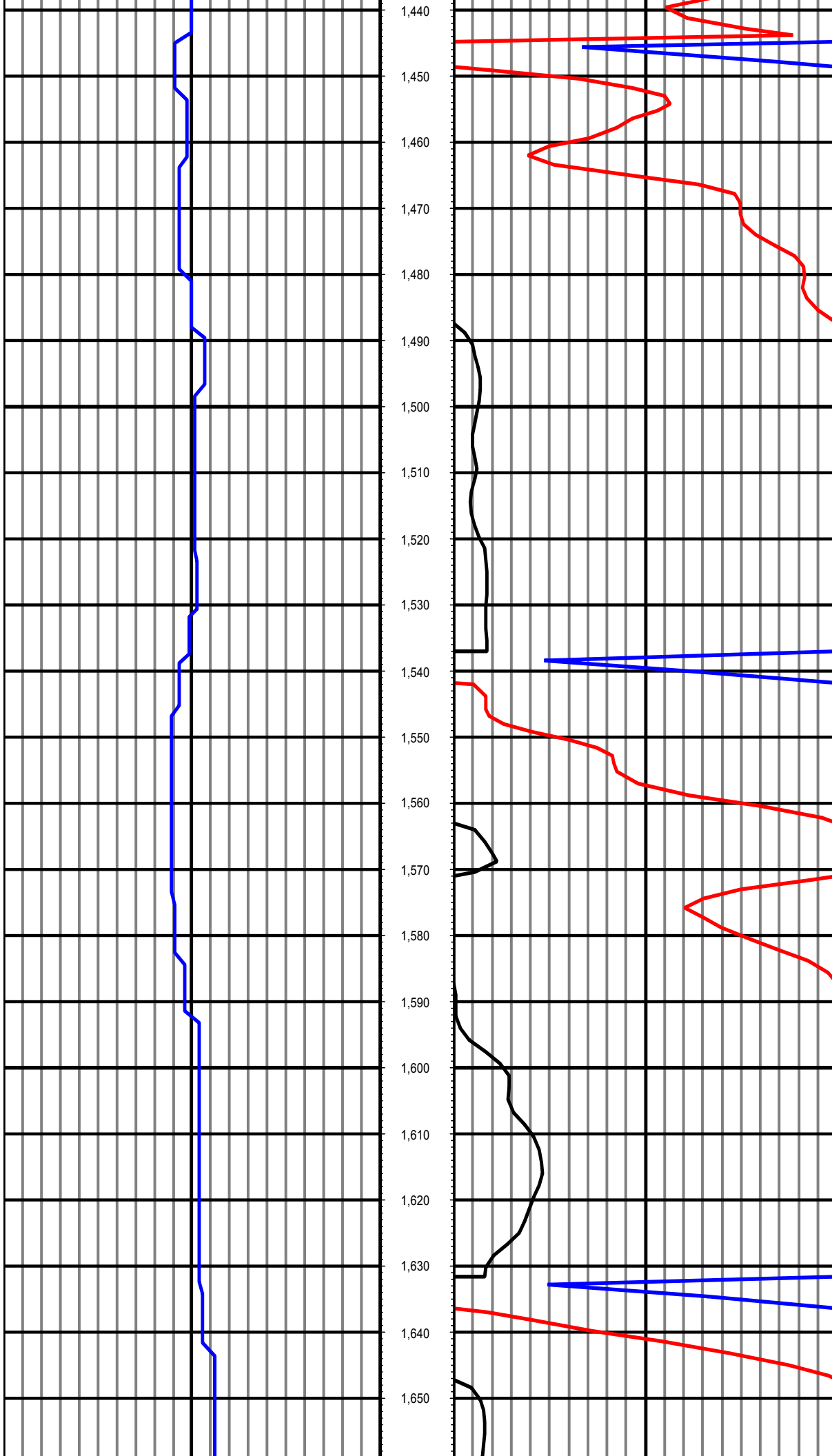


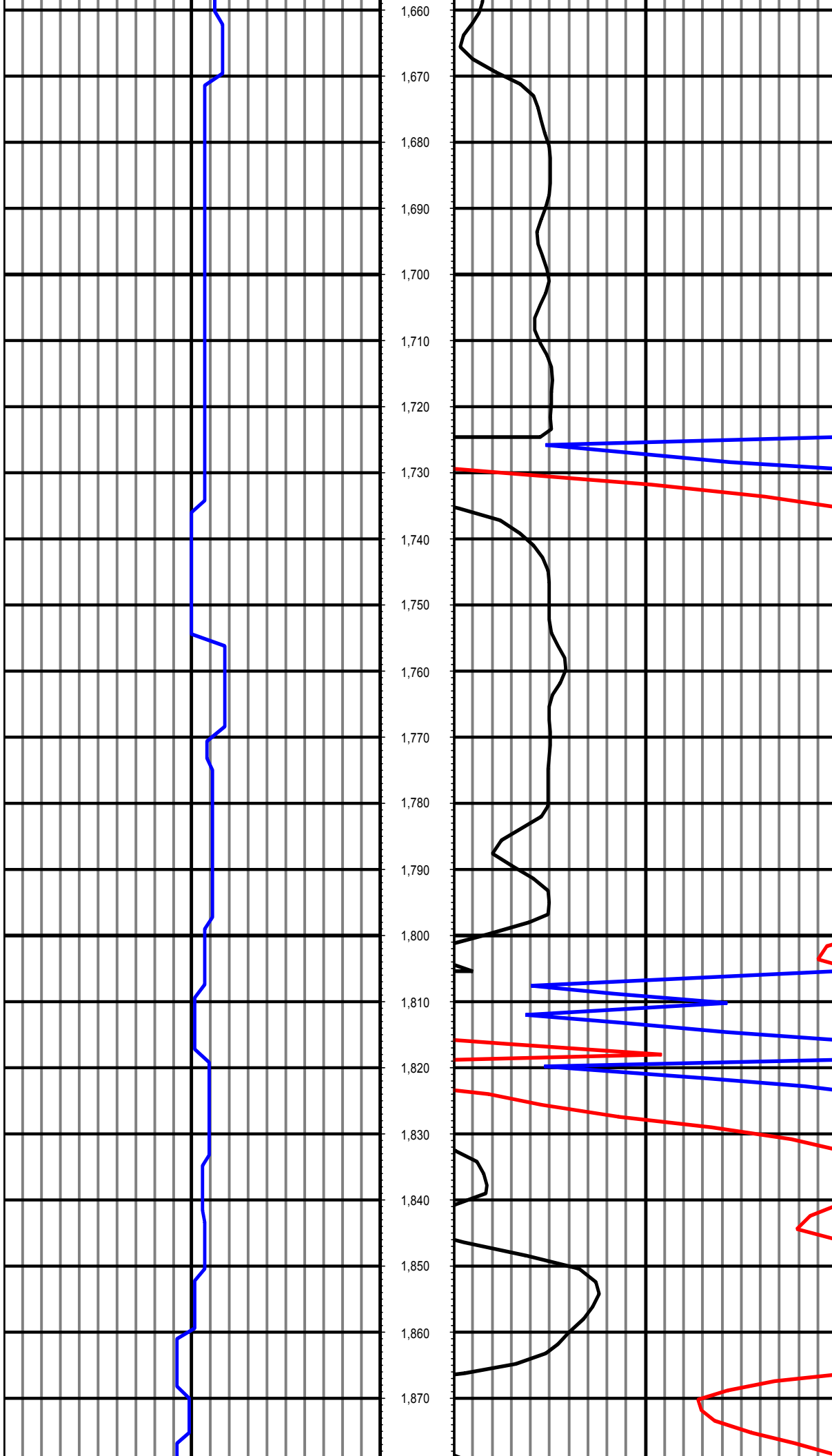


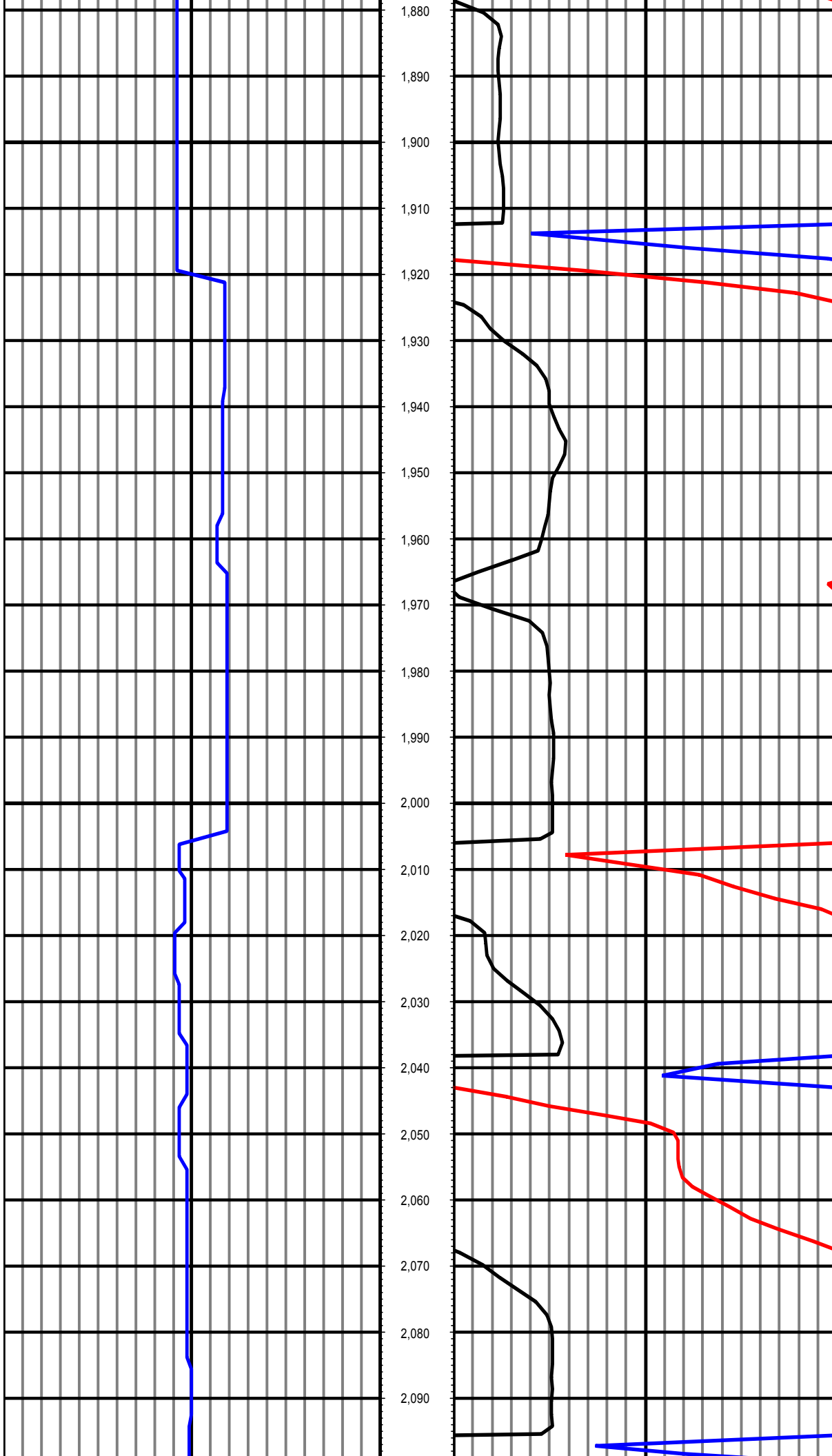


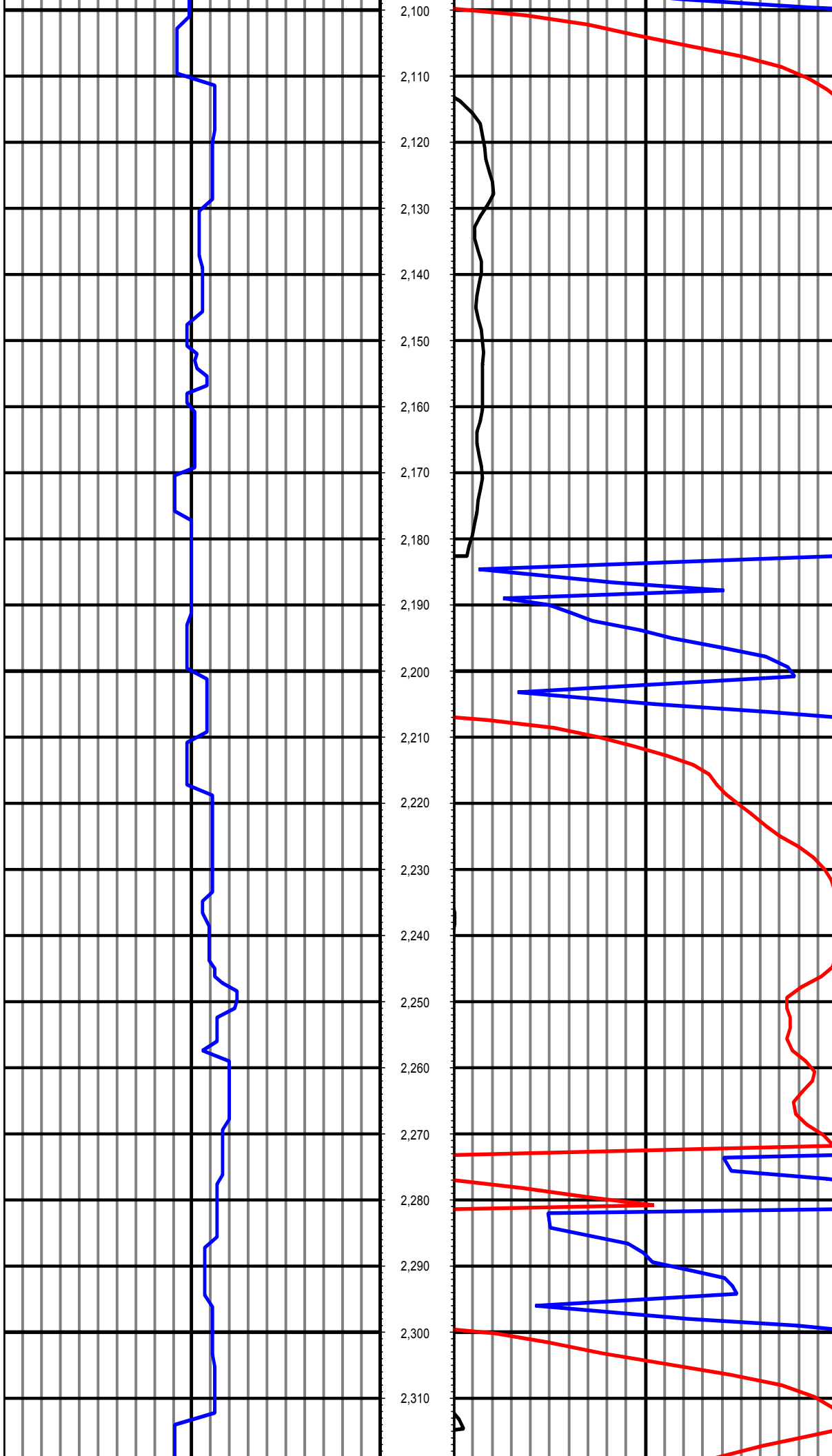


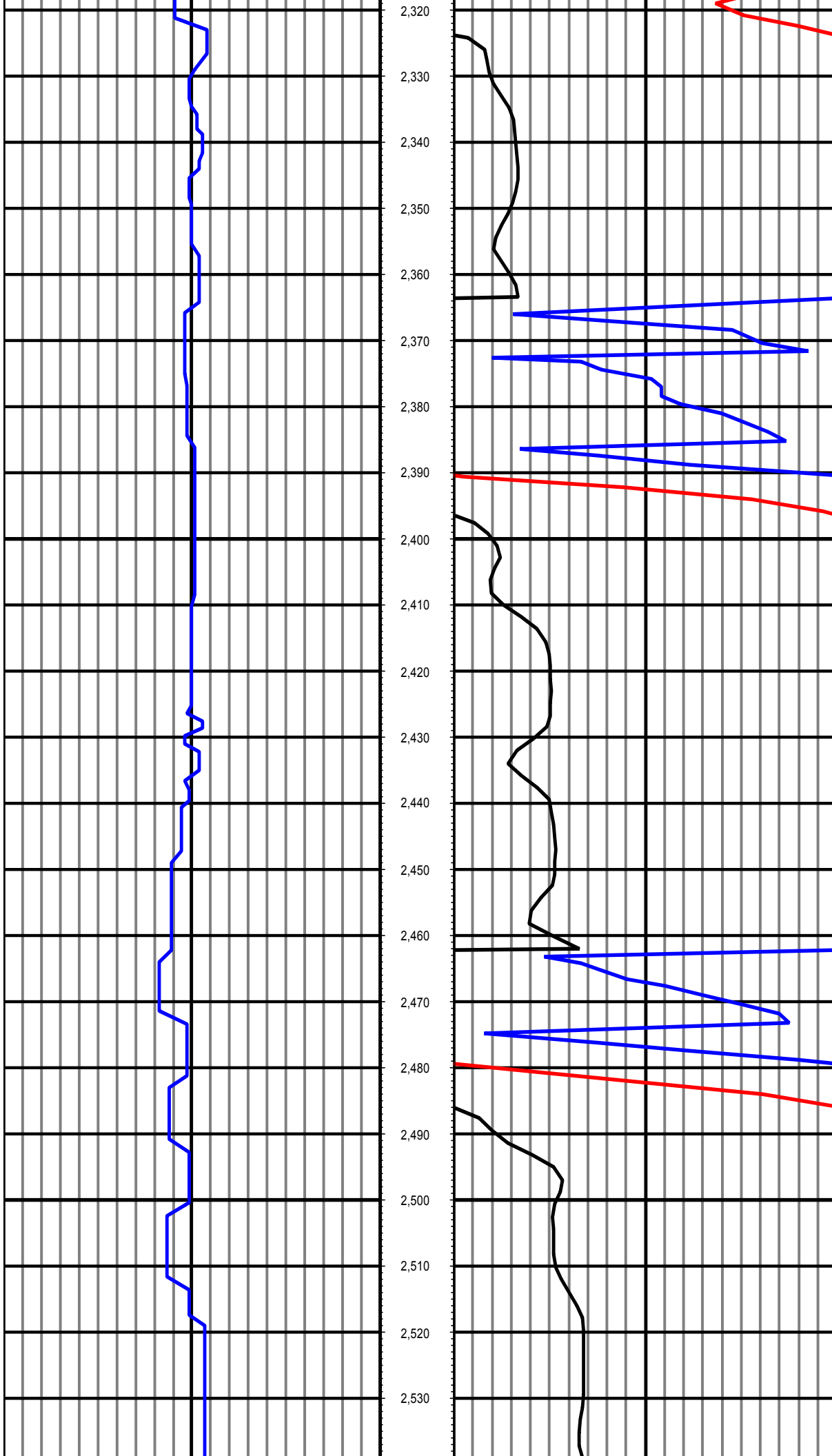


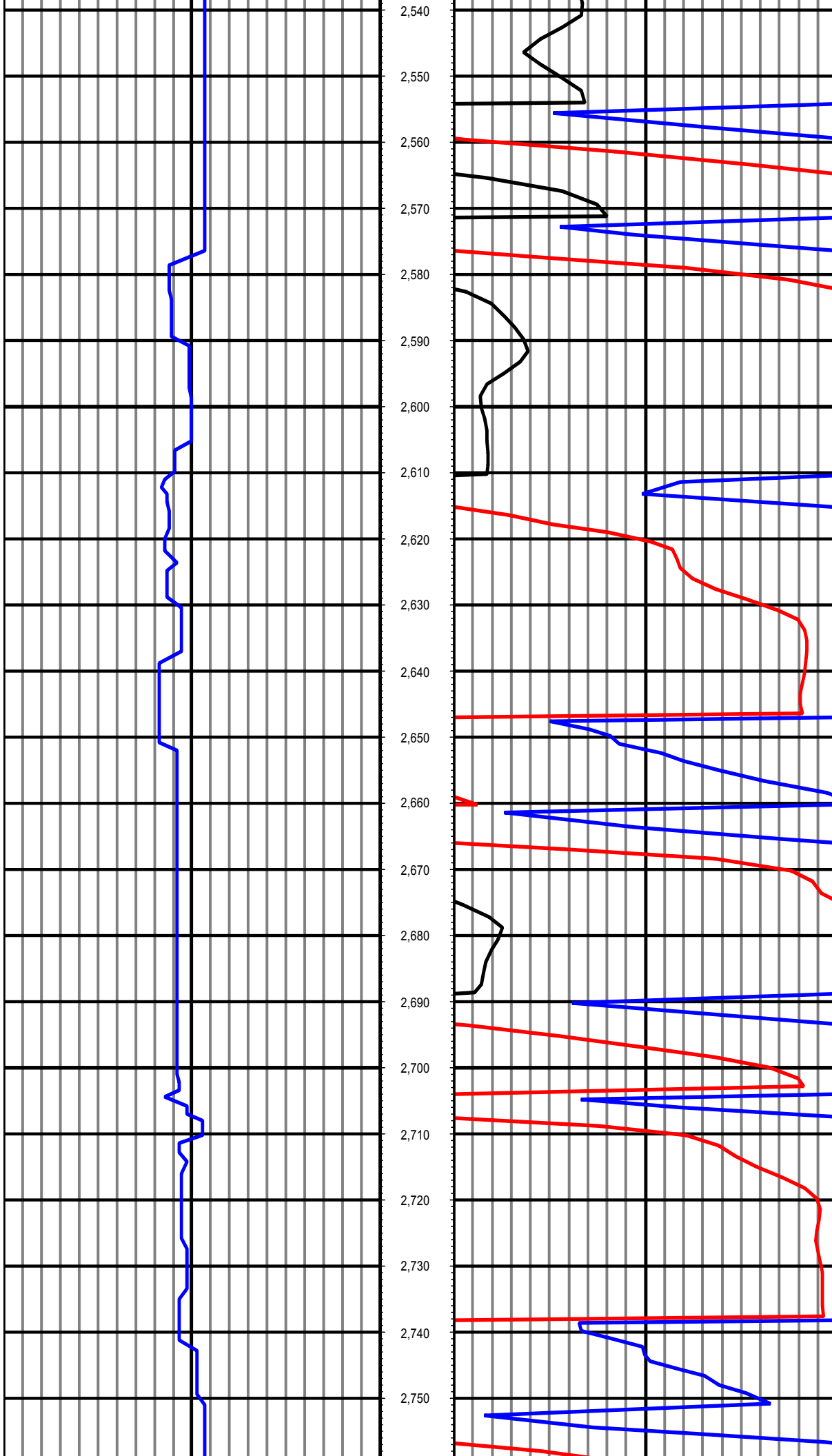


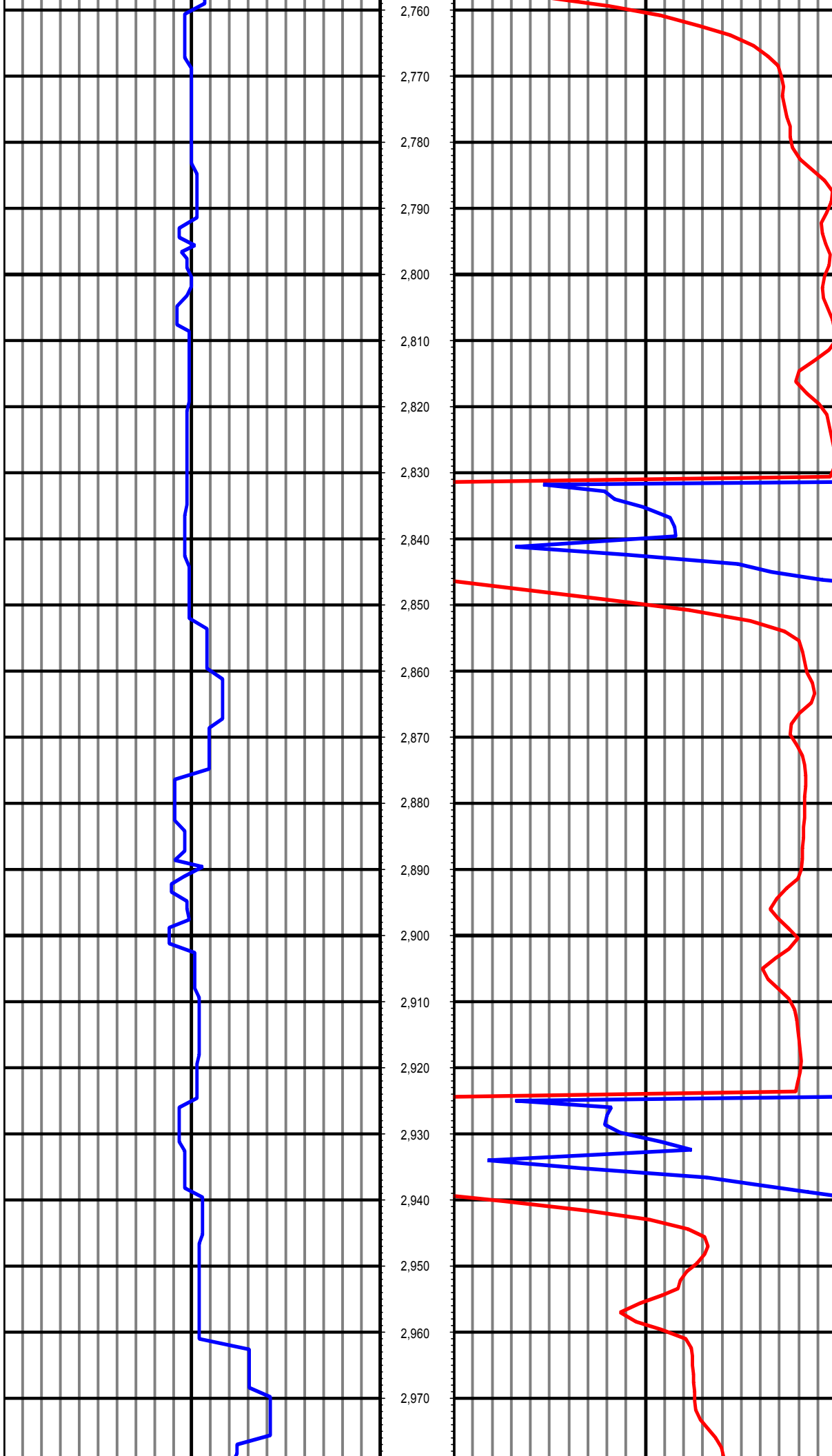


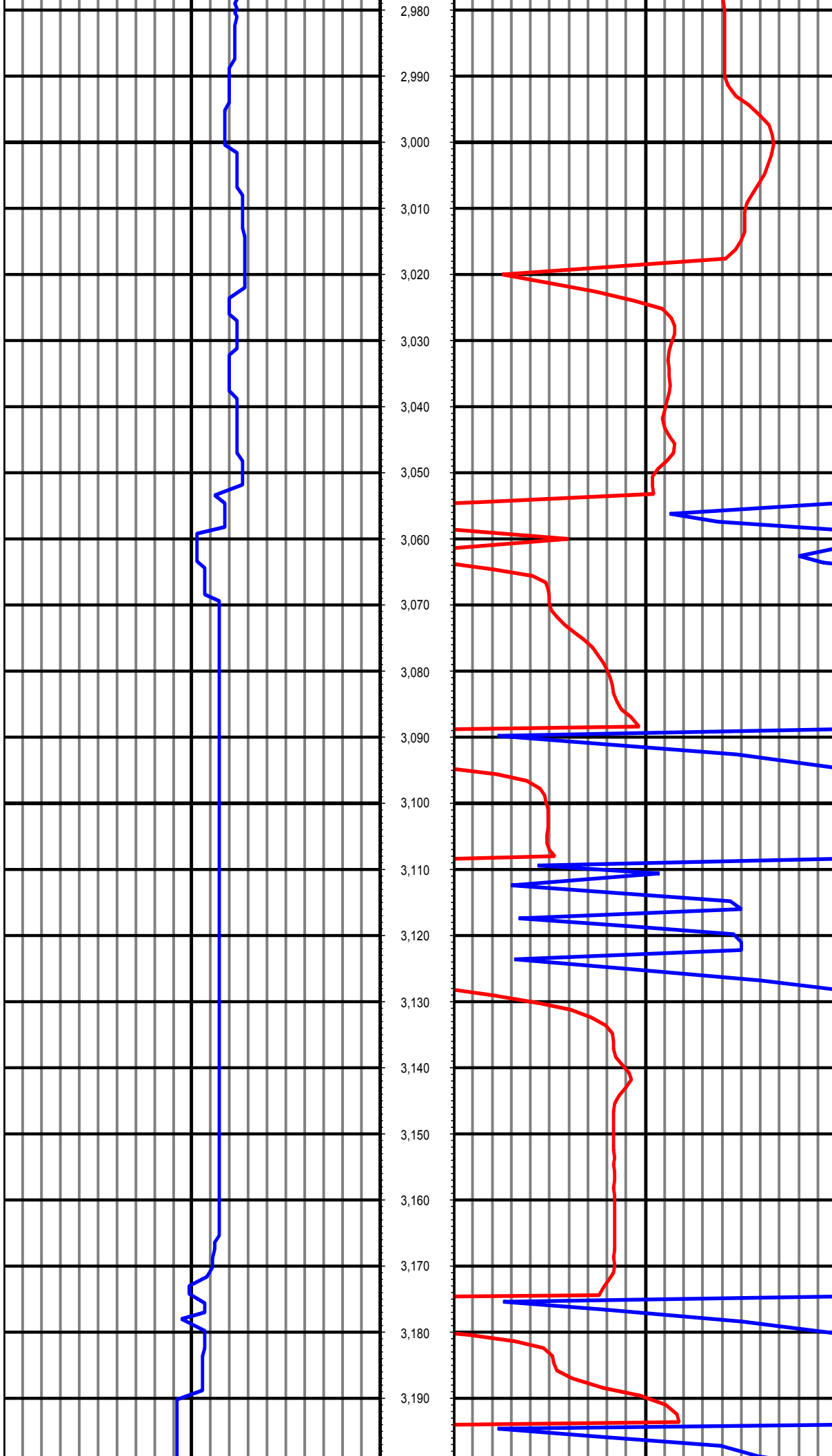


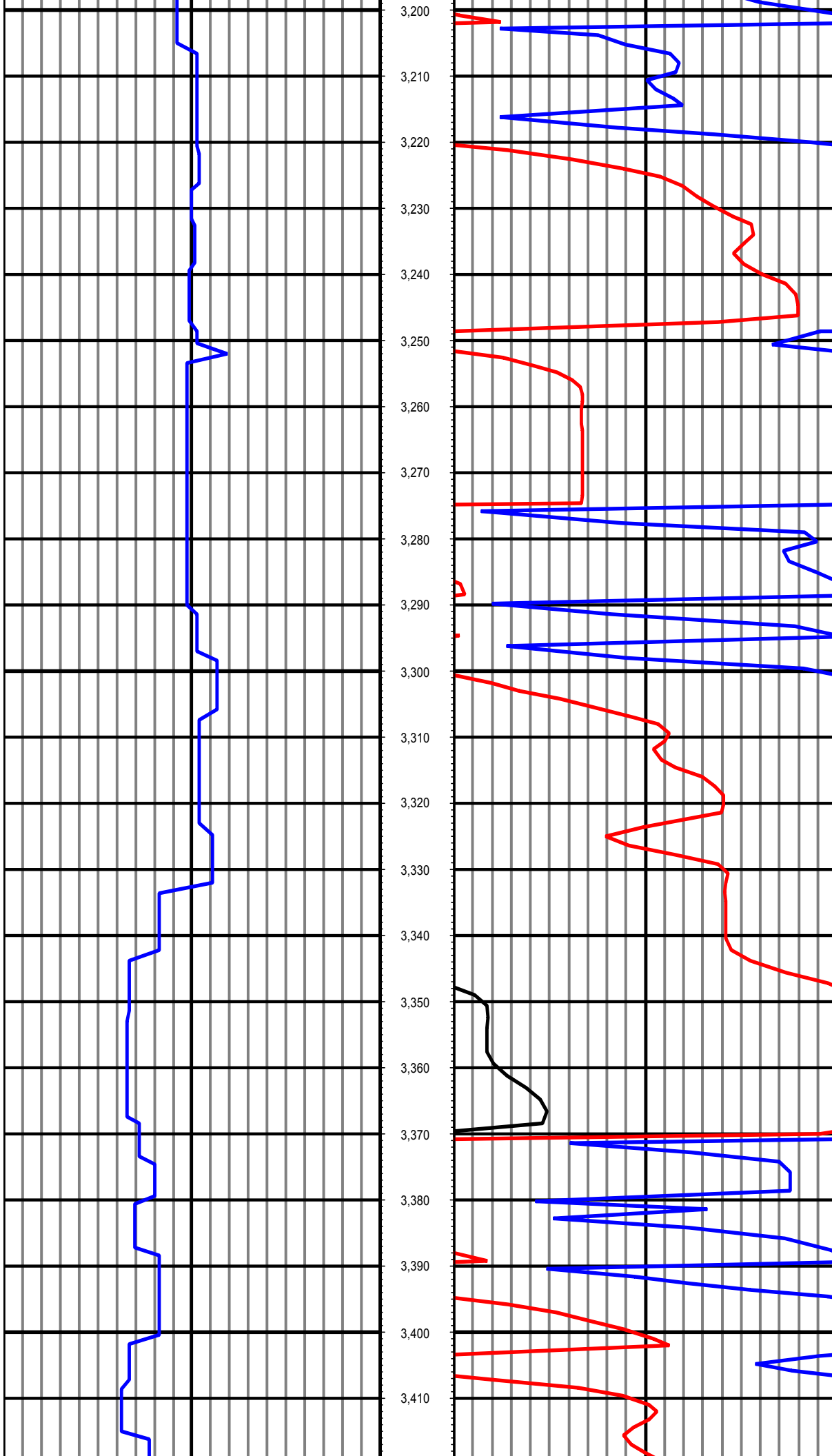


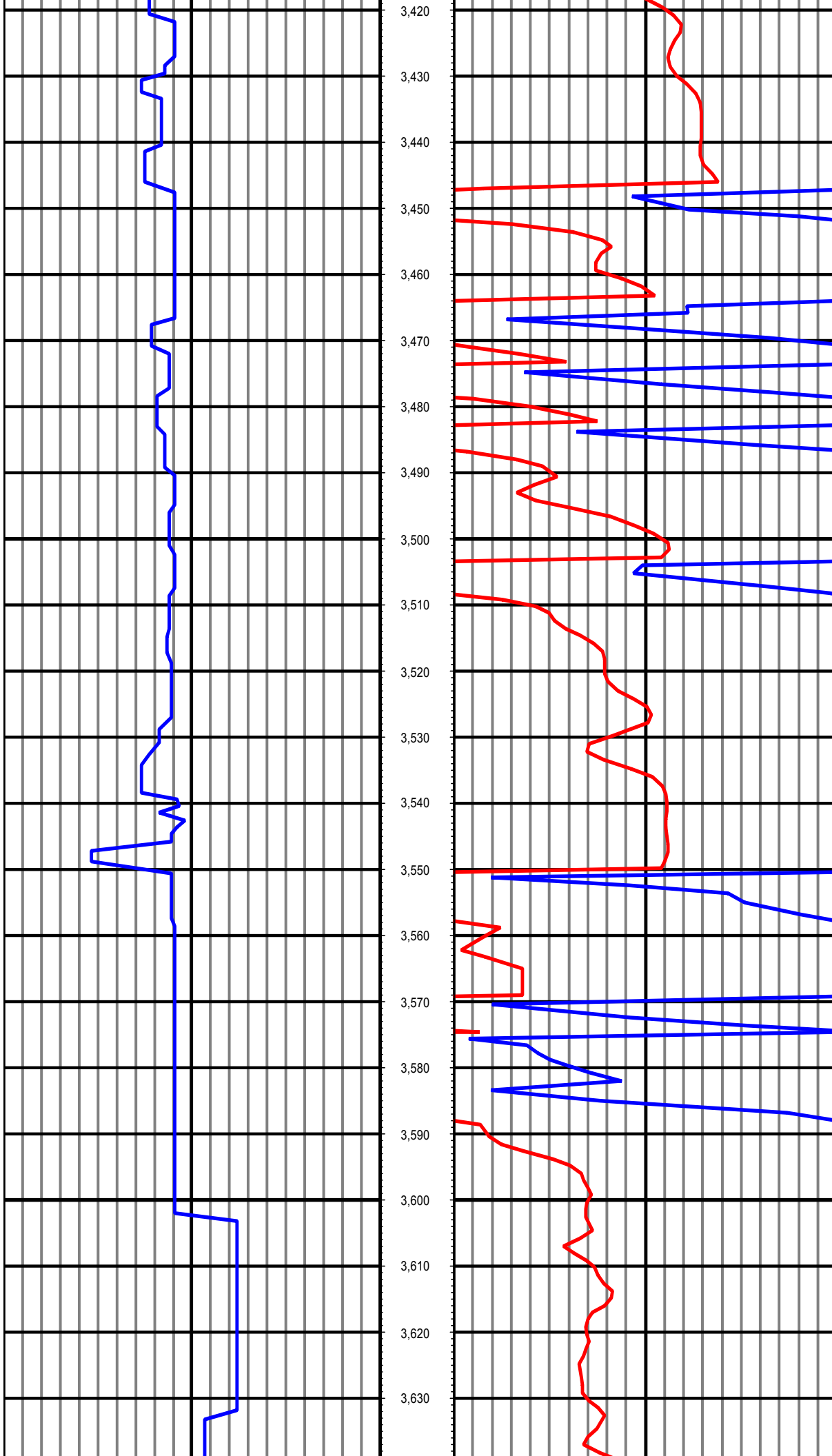


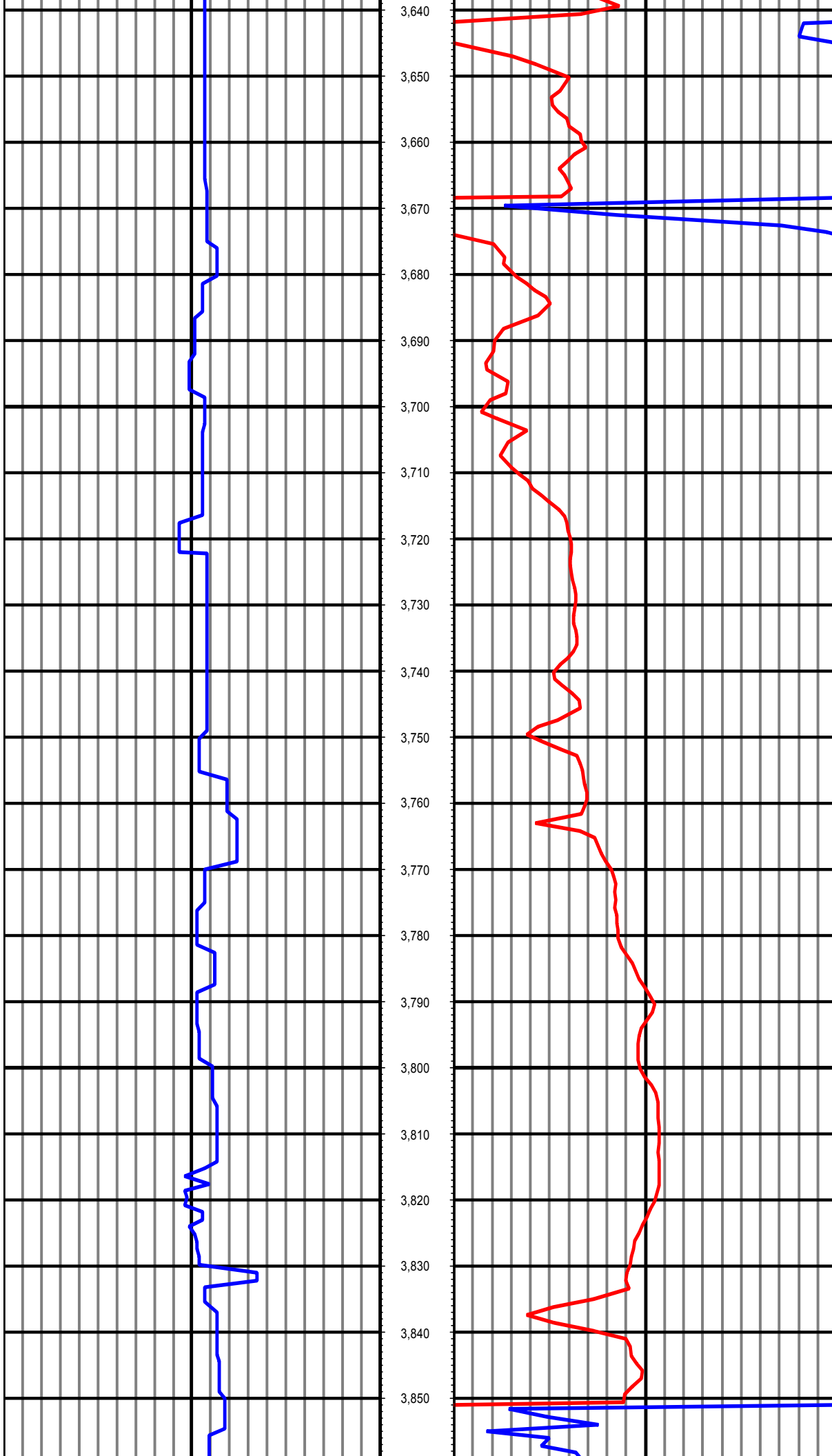


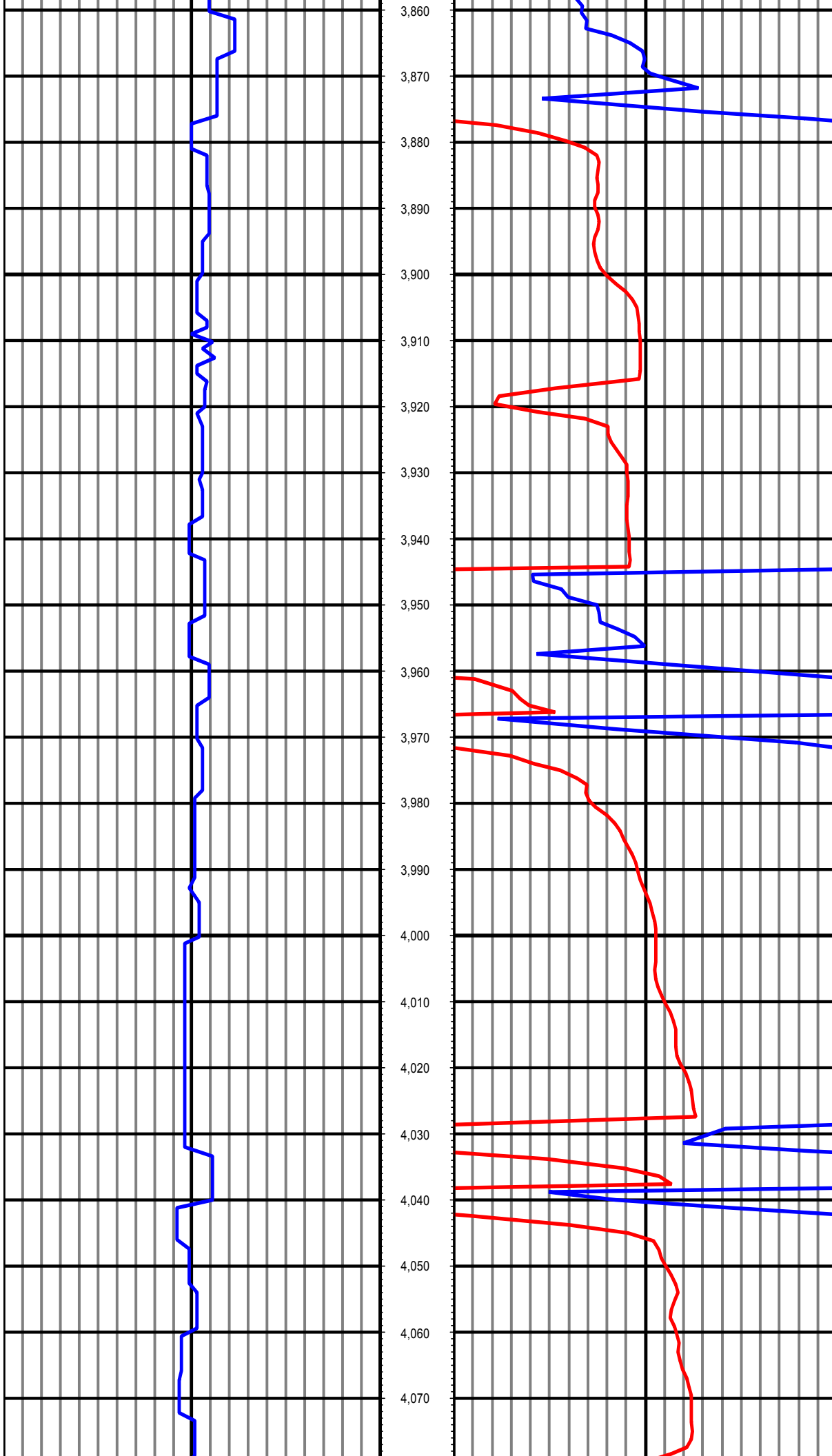


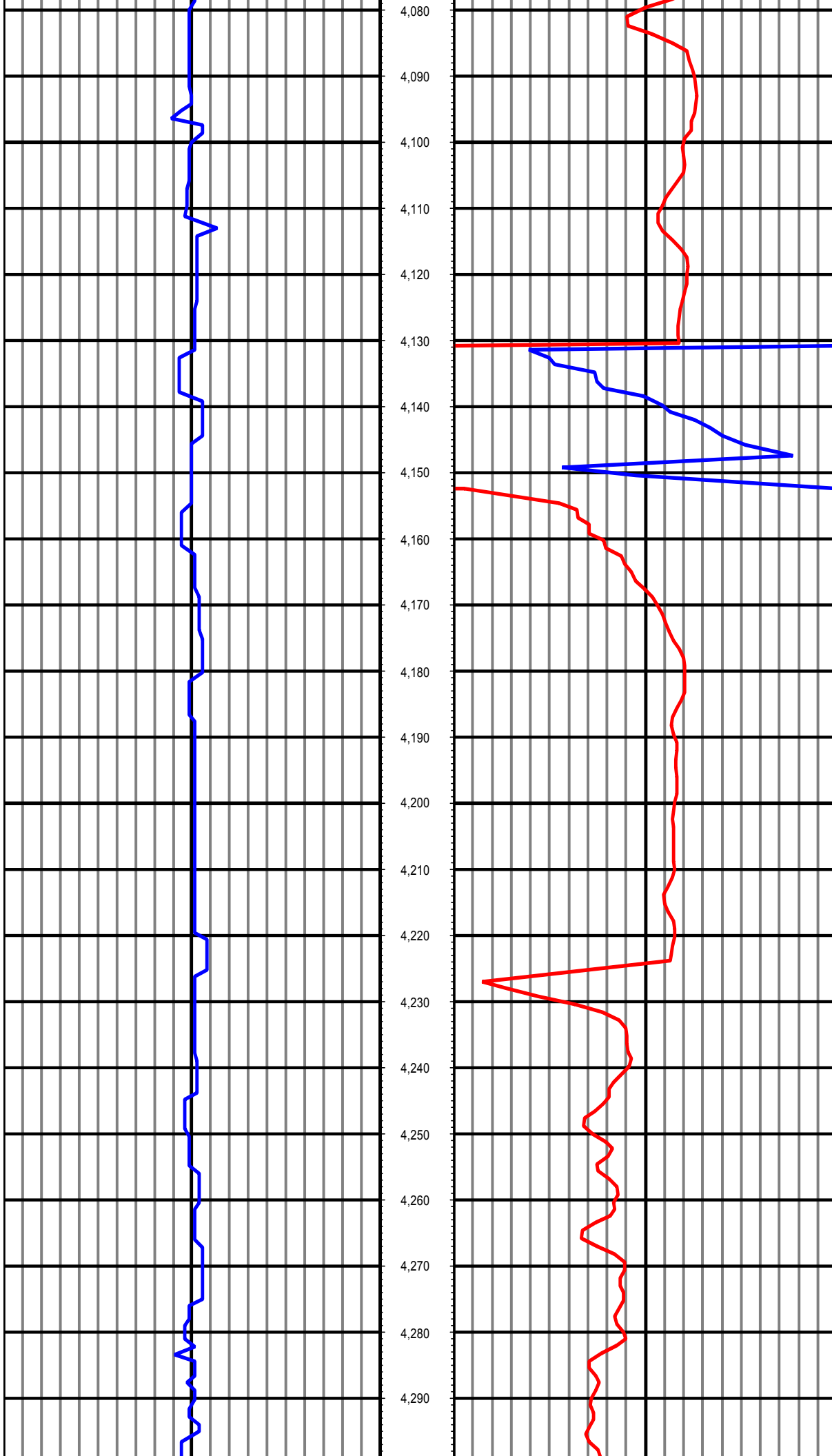


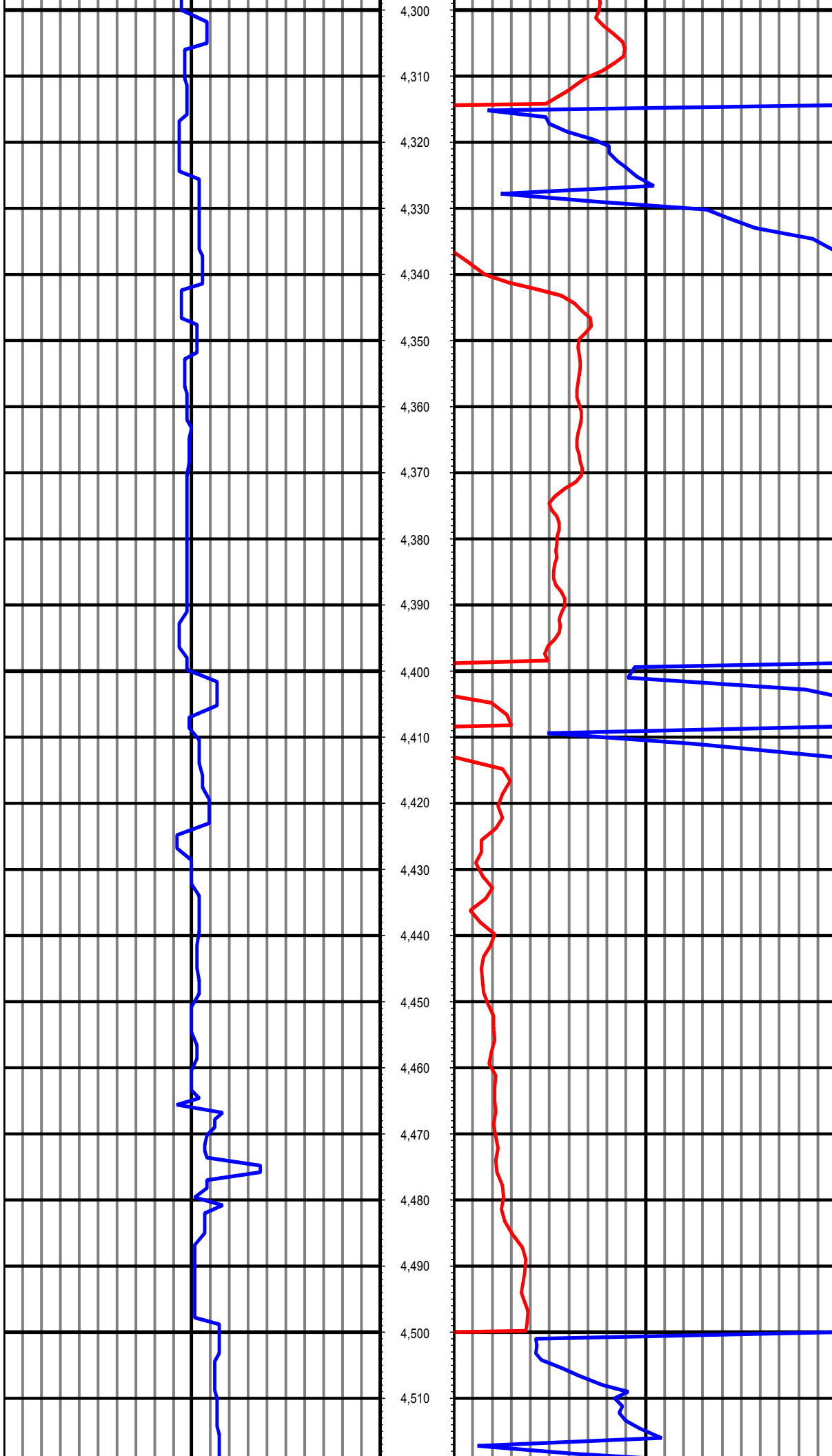


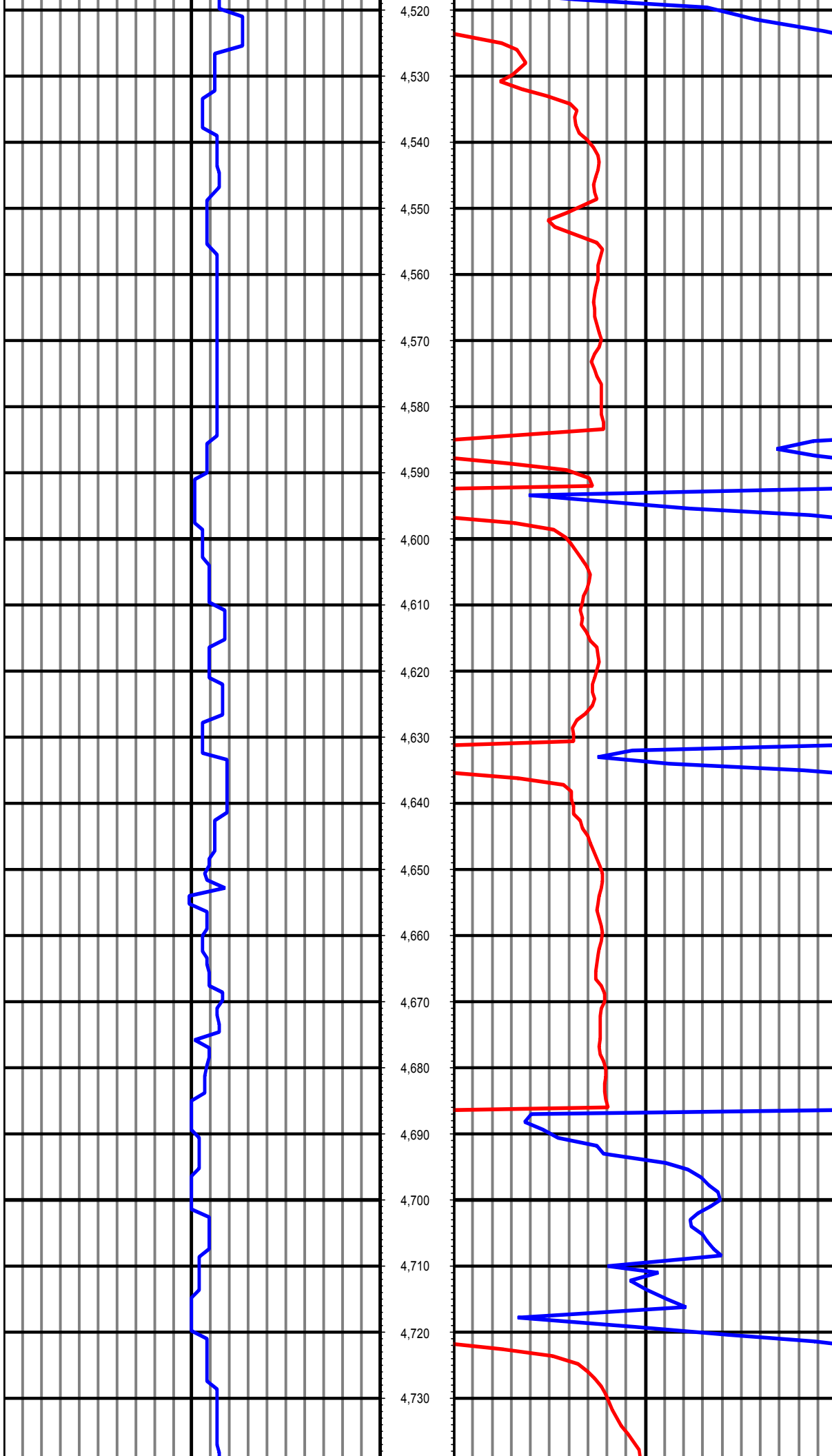


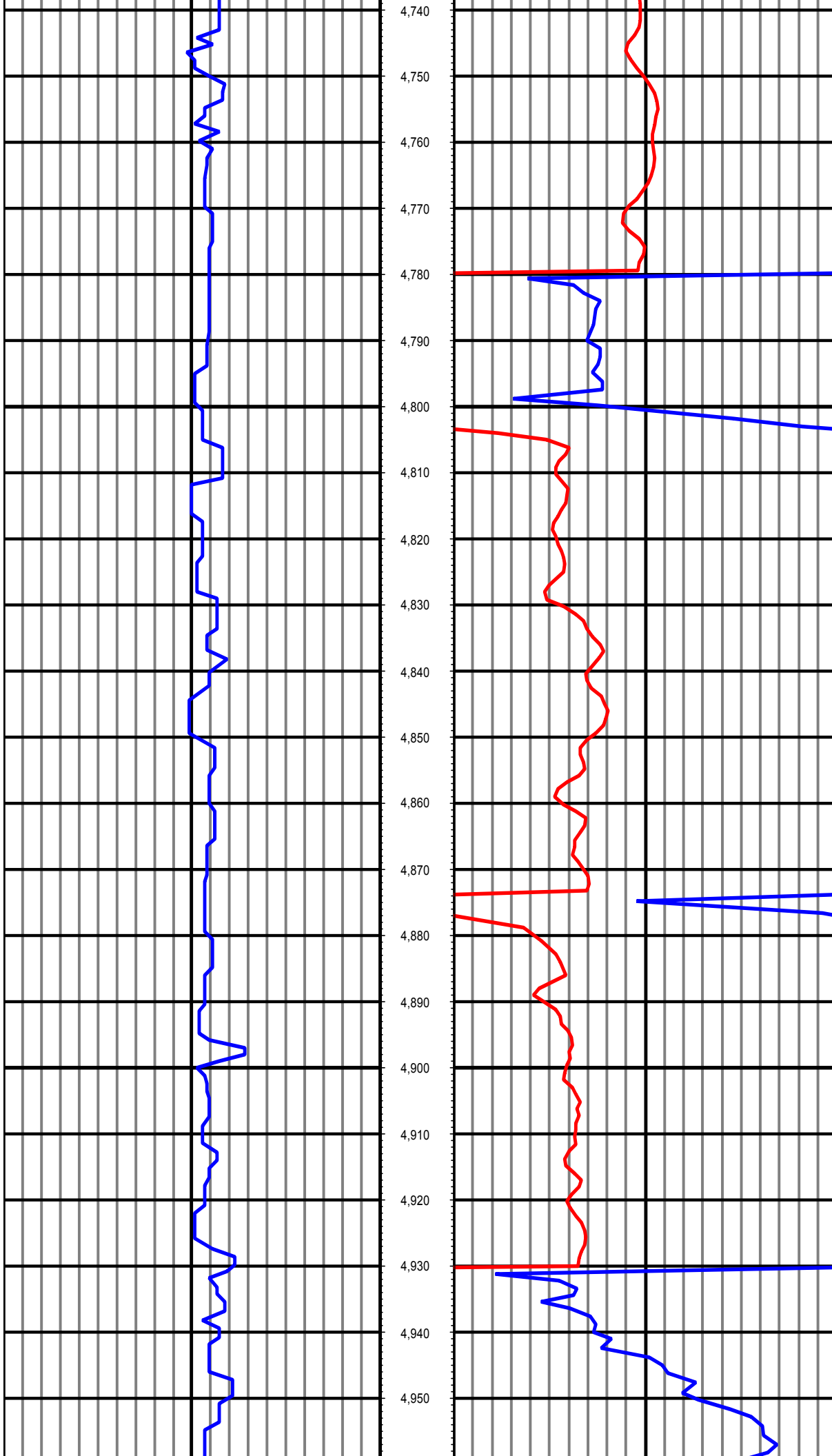


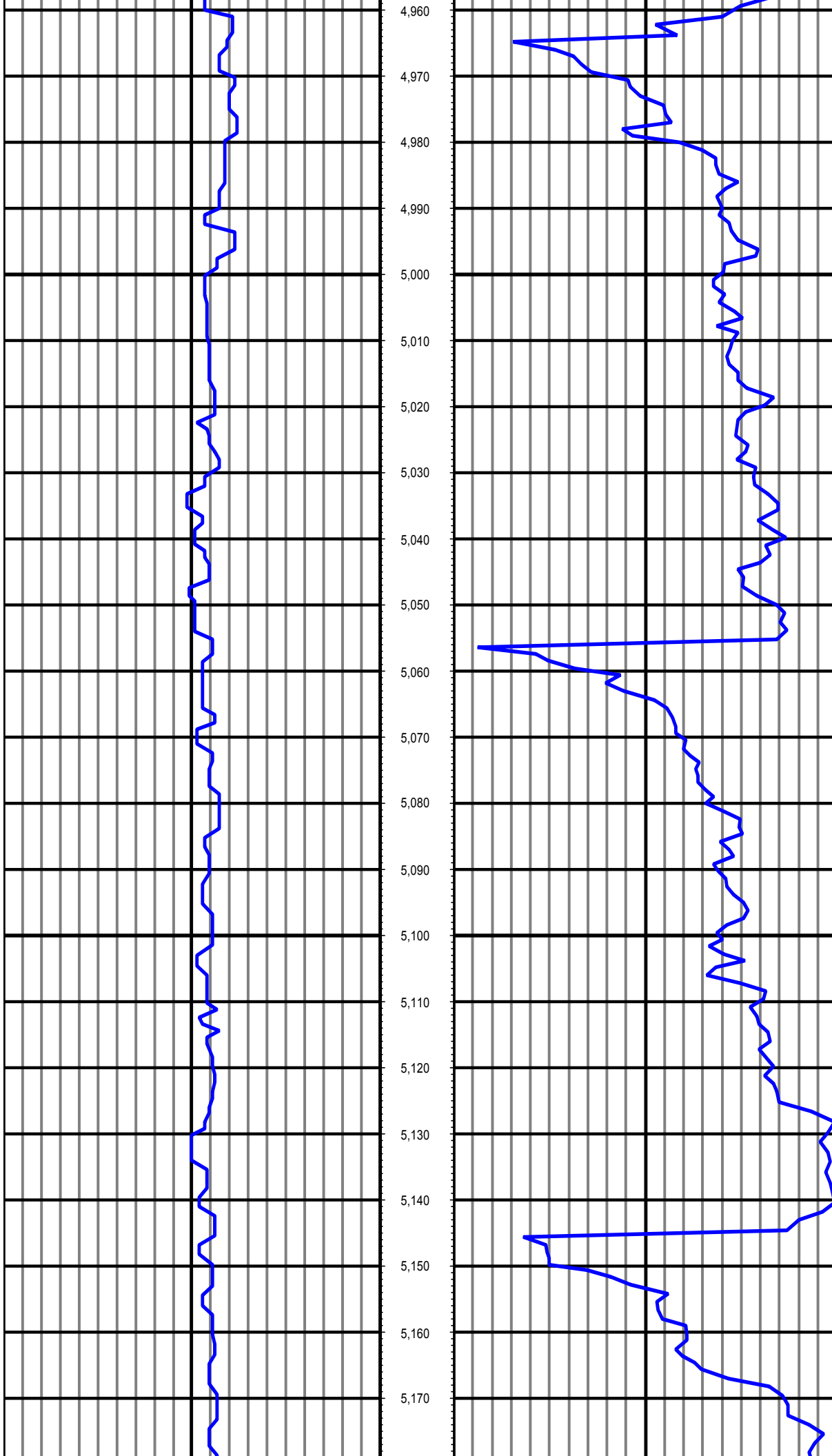


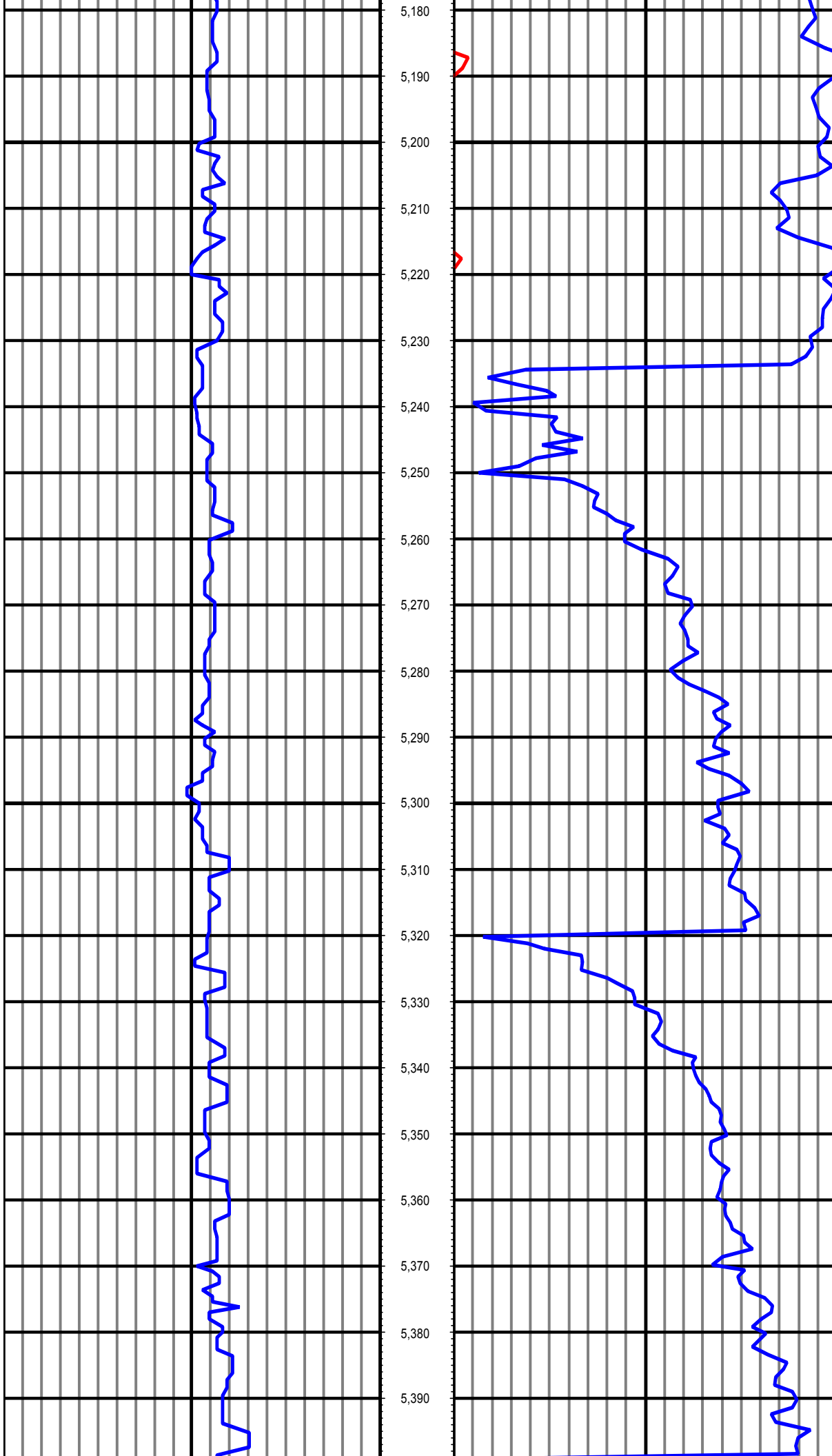


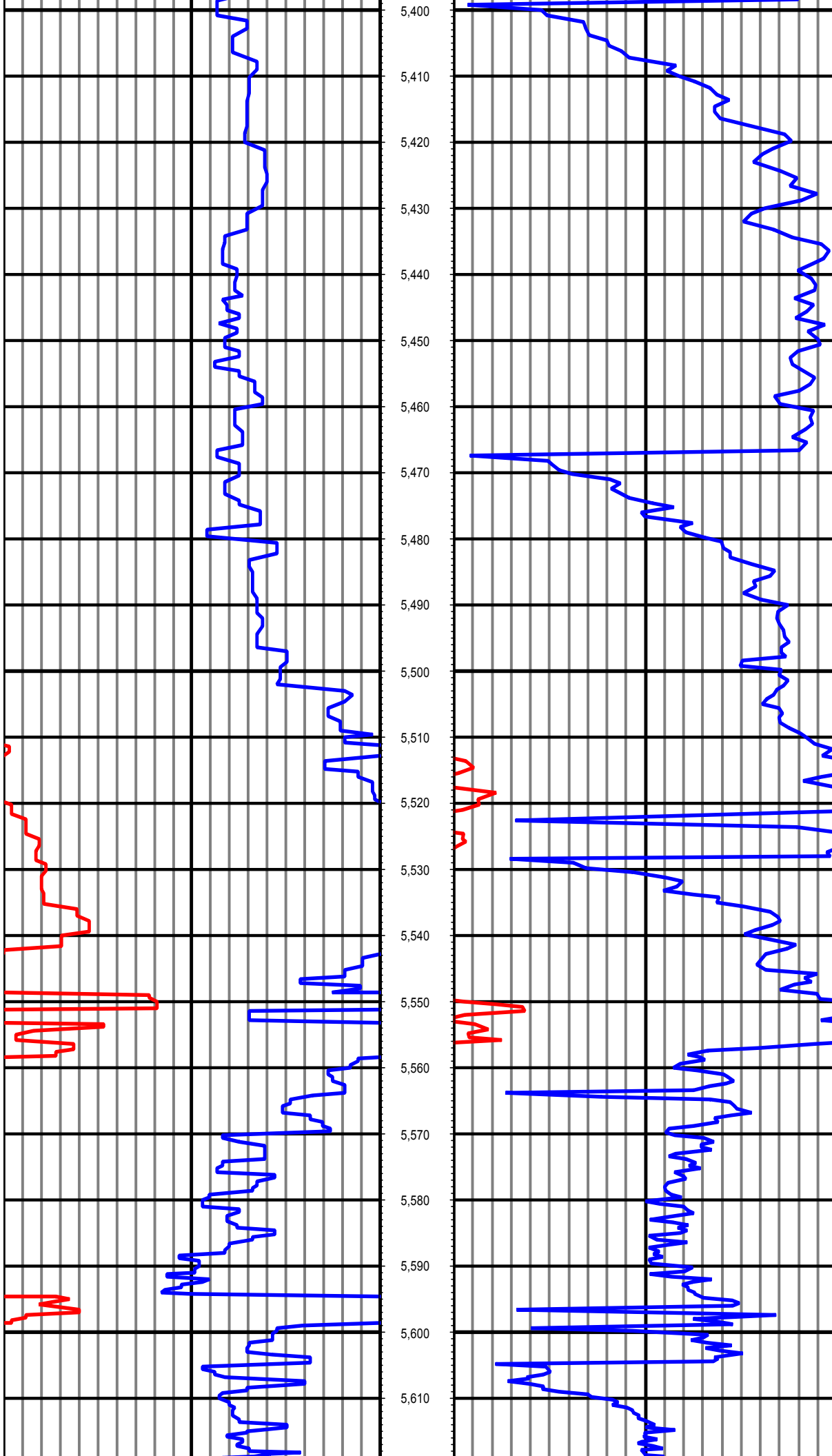














0.00 Counts(mG) 150.00
150.00 2 300.00



TVD 0.00 ROP(FT/HR) 600.00
FT 600.00 2 1,200.00
1,200.00 3 1,800.00