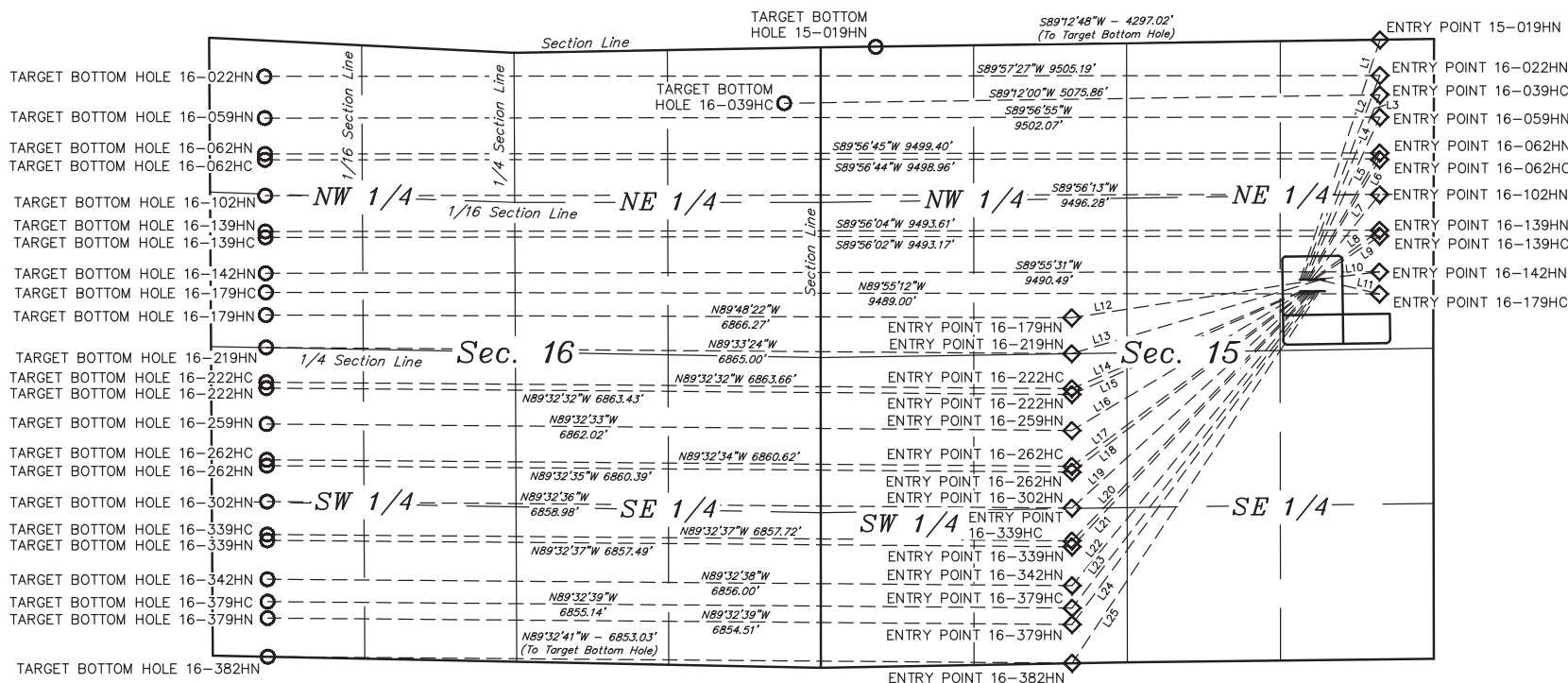




- WELLHEAD
- ◇ Entry Point
- Target Bottom Hole



LINE TABLE		
LINE	DIRECTION	LENGTH
L1	N18°24'28"E	2154.92'
L2	N20°54'11"E	1863.17'
L3	N22°24'09"E	1703.89'
L4	N24°34'39"E	1524.13'
L5	N29°46'11"E	1245.09'
L6	N30°20'13"E	1194.04'
L7	N38°57'51"E	934.07'
L8	N53°37'46"E	709.96'
L9	N56°19'40"E	668.74'
L10	N82°59'21"E	544.90'
L11	S76°55'38"E	539.36'
L12	S81°14'45"W	2136.02'
L13	S73°27'25"W	2217.60'
L14	S66°59'13"W	2115.42'
L15	S65°54'28"W	2149.28'
L16	S59°05'20"W	2303.90'
L17	S53°13'09"W	2486.41'
L18	S52°30'22"W	2528.64'
L19	S47°35'59"W	2736.71'
L20	S43°45'51"W	2943.17'
L21	S43°18'12"W	2989.87'
L22	S39°28'57"W	3248.22'
L23	S37°37'39"W	3407.02'
L24	S36°25'39"W	3527.89'
L25	S33°39'38"W	3805.99'

GREAT WESTERN OIL & GAS COMPANY

SIMPSON FD 16-222HC, 222HN, 259HN, 262HC, 262HN, 302HN, 339HC, 339HN, 342HN, 379HC, 379HN, 382HN, OPEN SLOT-M, N, O SOUTH, 15-019HN, 16-022HN, 039HC, 059HN, 062HN, 062HC, 102HN, 139HN, 139HC, 142HN, 179HC, 179HN, 219HN, OPEN SLOT-N & O NORTH
SECTION 15, T6N, R67W, 6th P.M.
SE 1/4 NE 1/4

DRAWN BY: J.W. DATE DRAWN: 12-29-14
SCALE: 1" = 1000' REVISED: 04-27-15 J.S.

MULTI-WELL PLAN

FIGURE #5



UELS, LLC
Corporate Office * 85 South 200 East
Vernal, UT 84078 * (435) 789-1017