

# Bayswater Exploration & Production, LLC

Well Name: **Arellano S-10-9HN**

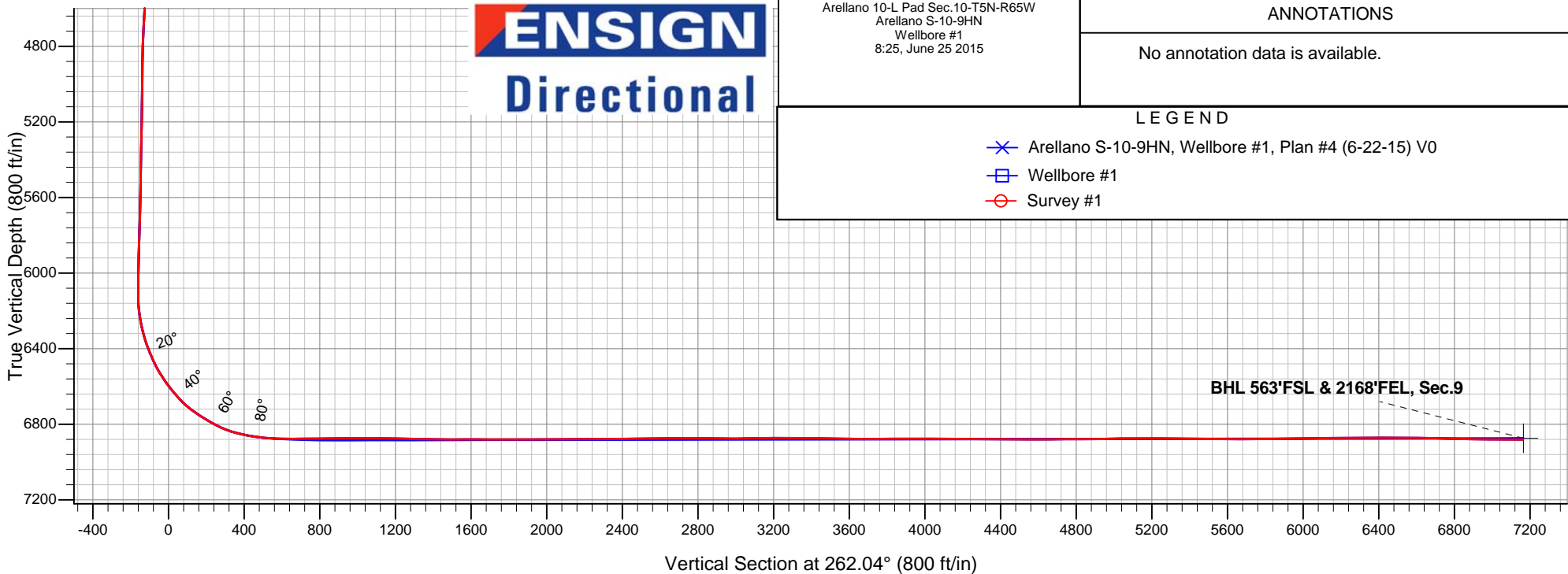
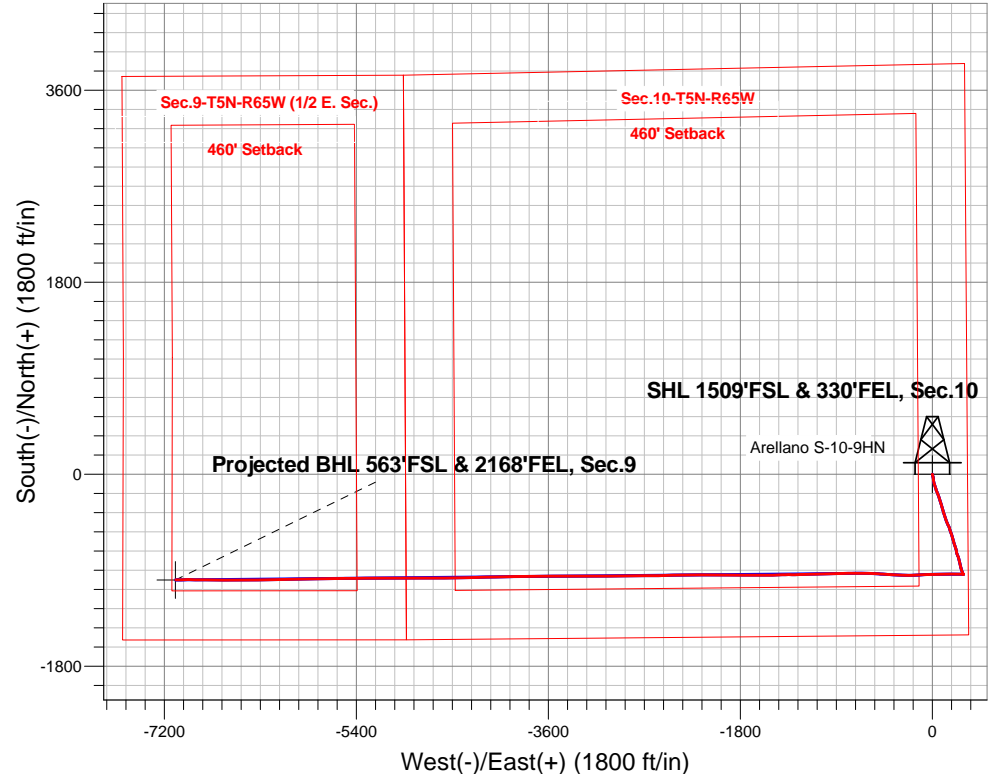
Surface Location: Arellano 10-L Pad Sec.10-T5N-R65W  
North American Datum 1983 , US State Plane 1983 , Colorado Northern Zone

Ground Elevation: 4616.0

+N/-S	+E/-W	Northing	Easting	Latitude	Longitude	Slot
0.0	0.0	1393629.13	3239140.85	40.410735	-104.641208	
RKB - 22.5' WELL @ 4638.5ft (RKB - 22.5')						

## FINAL SURVEY

**Projected Bottom Hole Location**  
**14041'MD 6882'TVD 990'S & 7094'W of SHL**  
**89.8 degree Incl @ 269.7 degree AZM**





# **Bayswater Exploration & Production, LLC**

**SEC.10-T5N-R65W**

**Arellano 10-L Pad Sec.10-T5N-R65W**

**Arellano S-10-9HN**

**Wellbore #1**

**Survey: Survey #1**

## **Standard Survey Report**

**08 July, 2015**



**BAYSWATER**  
**EXPLORATION & PRODUCTION, LLC**

<b>Company:</b>	Bayswater Exploration & Production, LLC	<b>Local Co-ordinate Reference:</b>	Well Arellano S-10-9HN
<b>Project:</b>	SEC.10-T5N-R65W	<b>TVD Reference:</b>	WELL @ 4638.5ft (RKB - 22.5')
<b>Site:</b>	Arellano 10-L Pad Sec.10-T5N-R65W	<b>MD Reference:</b>	WELL @ 4638.5ft (RKB - 22.5')
<b>Well:</b>	Arellano S-10-9HN	<b>North Reference:</b>	True
<b>Wellbore:</b>	Wellbore #1	<b>Survey Calculation Method:</b>	Minimum Curvature
<b>Design:</b>	Wellbore #1	<b>Database:</b>	EDMNEW

<b>Project</b>	SEC.10-T5N-R65W, Weld County, CO		
<b>Map System:</b>	US State Plane 1983	<b>System Datum:</b>	Mean Sea Level
<b>Geo Datum:</b>	North American Datum 1983		Using Well Reference Point
<b>Map Zone:</b>	Colorado Northern Zone		

Site	Arellano 10-L Pad Sec.10-T5N-R65W				
Site Position:		Northing:	1,393,742.11 ft	Latitude:	40.411044
From:	Lat/Long	Easting:	3,239,181.53 ft	Longitude:	-104.641058
Position Uncertainty:	0.0 ft	Slot Radius:	"	Grid Convergence:	0.55 °

Well	Arellano S-10-9HN					
Well Position	+N/-S	0.0 ft	Northing:	1,393,629.13 ft	Latitude:	40.410735
	+E/-W	0.0 ft	Easting:	3,239,140.85 ft	Longitude:	-104.641208
Position Uncertainty		0.0 ft	Wellhead Elevation:	ft	Ground Level:	4,616.0 ft

<b>Wellbore</b>	Wellbore #1				
<b>Magnetics</b>	<b>Model Name</b>	<b>Sample Date</b>	<b>Declination (°)</b>	<b>Dip Angle (°)</b>	<b>Field Strength (nT)</b>
	IGRF2010	6/20/2015	8.26	66.94	52,728

<b>Design</b>	Wellbore #1				
<b>Audit Notes:</b>					
<b>Version:</b>	1.0	<b>Phase:</b>	ACTUAL	<b>Tie On Depth:</b>	0.0
<b>Vertical Section:</b>	<b>Depth From (TVD) (ft)</b>	<b>+N/-S (ft)</b>	<b>+E/-W (ft)</b>	<b>Direction (°)</b>	
	0.0	0.0	0.0	262.04	

<b>Survey Program</b>	<b>Date</b>	6/25/2015			
<b>From (ft)</b>	<b>To (ft)</b>	<b>Survey (Wellbore)</b>	<b>Tool Name</b>	<b>Description</b>	
223.0	14,041.0	Survey #1 (Wellbore #1)	MWD	MWD - Standard	

<b>Survey</b>										
<b>Measured Depth (ft)</b>	<b>Inclination (°)</b>	<b>Azimuth (°)</b>	<b>Vertical Depth (ft)</b>	<b>+N/-S (ft)</b>	<b>+E/-W (ft)</b>	<b>Vertical Section (ft)</b>	<b>Dogleg Rate (°/100ft)</b>	<b>Build Rate (°/100ft)</b>	<b>Turn Rate (°/100ft)</b>	
0.0	0.00	0.00	0.0	0.0	0.0	0.0	0.00	0.00	0.00	
1.0	0.00	292.20	1.0	0.0	0.0	0.0	0.00	0.00	0.00	
<b>SHL 1509'FSL &amp; 330'FEL, Sec.10</b>										
223.0	0.10	292.20	223.0	0.1	-0.2	0.2	0.05	0.05	0.00	
315.0	0.20	331.90	315.0	0.2	-0.3	0.3	0.15	0.11	43.15	
407.0	1.00	195.30	407.0	-0.4	-0.6	0.7	1.25	0.87	-148.48	
499.0	1.80	169.30	499.0	-2.6	-0.6	0.9	1.09	0.87	-28.26	
591.0	3.30	157.70	590.9	-6.5	0.7	0.2	1.72	1.63	-12.61	
683.0	4.70	159.50	682.6	-12.4	3.0	-1.3	1.53	1.52	1.96	
745.0	5.70	164.70	744.4	-17.8	4.7	-2.2	1.78	1.61	8.39	
831.0	6.70	167.90	829.9	-26.8	6.9	-3.1	1.23	1.16	3.72	
926.0	9.20	173.70	924.0	-39.8	8.9	-3.3	2.76	2.63	6.11	
1,021.0	11.20	176.70	1,017.5	-56.5	10.3	-2.3	2.18	2.11	3.16	

<b>Company:</b>	Bayswater Exploration & Production, LLC	<b>Local Co-ordinate Reference:</b>	Well Arellano S-10-9HN
<b>Project:</b>	SEC.10-T5N-R65W	<b>TVD Reference:</b>	WELL @ 4638.5ft (RKB - 22.5')
<b>Site:</b>	Arellano 10-L Pad Sec.10-T5N-R65W	<b>MD Reference:</b>	WELL @ 4638.5ft (RKB - 22.5')
<b>Well:</b>	Arellano S-10-9HN	<b>North Reference:</b>	True
<b>Wellbore:</b>	Wellbore #1	<b>Survey Calculation Method:</b>	Minimum Curvature
<b>Design:</b>	Wellbore #1	<b>Database:</b>	EDMNEW

## Survey

Measured Depth (ft)	Inclination (°)	Azimuth (°)	Vertical Depth (ft)	+N/-S (ft)	+E/-W (ft)	Vertical Section (ft)	Dogleg Rate (°/100ft)	Build Rate (°/100ft)	Turn Rate (°/100ft)
1,117.0	12.50	164.40	1,111.4	-75.9	13.6	-3.0	2.95	1.35	-12.81
1,209.0	12.50	166.10	1,201.3	-95.1	18.7	-5.3	0.40	0.00	1.85
1,301.0	12.40	162.50	1,291.1	-114.2	24.0	-8.0	0.85	-0.11	-3.91
1,393.0	12.40	162.80	1,380.9	-133.1	29.9	-11.2	0.07	0.00	0.33
1,485.0	11.50	158.90	1,470.9	-151.0	36.2	-14.9	1.31	-0.98	-4.24
1,577.0	11.30	153.80	1,561.1	-167.7	43.4	-19.8	1.12	-0.22	-5.54
1,669.0	11.00	159.30	1,651.4	-184.0	50.5	-24.6	1.20	-0.33	5.98
1,762.0	11.50	162.50	1,742.6	-201.1	56.4	-28.0	0.86	0.54	3.44
1,854.0	11.20	159.10	1,832.8	-218.2	62.4	-31.6	0.80	-0.33	-3.70
1,946.0	11.50	163.30	1,923.0	-235.4	68.2	-35.0	0.96	0.33	4.57
2,038.0	11.00	159.80	2,013.3	-252.4	73.9	-38.2	0.92	-0.54	-3.80
2,130.0	10.60	163.90	2,103.6	-268.7	79.3	-41.3	0.94	-0.43	4.46
2,222.0	12.10	167.40	2,193.8	-286.3	83.7	-43.3	1.79	1.63	3.80
2,314.0	11.00	162.80	2,284.0	-304.1	88.4	-45.4	1.56	-1.20	-5.00
2,406.0	11.80	164.20	2,374.1	-321.5	93.6	-48.1	0.92	0.87	1.52
2,498.0	11.90	162.50	2,464.2	-339.6	99.0	-51.0	0.39	0.11	-1.85
2,593.0	12.30	163.50	2,557.1	-358.7	104.8	-54.1	0.48	0.42	1.05
2,689.0	12.00	162.60	2,650.9	-378.0	110.7	-57.3	0.37	-0.31	-0.94
2,784.0	12.30	161.70	2,743.8	-397.0	116.8	-60.7	0.37	0.32	-0.95
2,879.0	11.60	159.80	2,836.7	-415.6	123.3	-64.6	0.85	-0.74	-2.00
2,974.0	12.00	160.20	2,929.7	-433.8	129.9	-68.6	0.43	0.42	0.42
3,069.0	11.30	158.10	3,022.8	-451.8	136.7	-72.9	0.86	-0.74	-2.21
3,164.0	11.00	157.70	3,116.0	-468.8	143.7	-77.4	0.33	-0.32	-0.42
3,260.0	9.80	153.10	3,210.4	-484.6	150.8	-82.3	1.52	-1.25	-4.79
3,355.0	9.70	160.00	3,304.0	-499.3	157.2	-86.6	1.23	-0.11	7.26
3,450.0	10.30	165.40	3,397.6	-515.0	162.1	-89.2	1.17	0.63	5.68
3,545.0	10.60	160.00	3,491.0	-531.5	167.2	-92.0	1.08	0.32	-5.68
3,640.0	11.50	159.30	3,584.3	-548.5	173.6	-95.9	0.96	0.95	-0.74
3,735.0	12.00	161.70	3,677.3	-566.8	180.0	-99.8	0.74	0.53	2.53
3,831.0	13.00	164.90	3,771.0	-586.7	186.0	-102.9	1.27	1.04	3.33
3,926.0	13.50	164.60	3,863.5	-607.7	191.7	-105.7	0.53	0.53	-0.32
4,021.0	12.30	163.90	3,956.1	-628.1	197.4	-108.6	1.27	-1.26	-0.74
4,116.0	10.80	163.50	4,049.1	-646.3	202.8	-111.3	1.58	-1.58	-0.42
4,212.0	11.00	164.20	4,143.4	-663.8	207.8	-113.9	0.25	0.21	0.73
4,307.0	10.80	158.80	4,236.7	-680.8	213.5	-117.2	1.09	-0.21	-5.68
4,402.0	10.70	161.60	4,330.0	-697.5	219.5	-120.8	0.56	-0.11	2.95
4,497.0	10.10	169.70	4,423.5	-714.0	223.8	-122.8	1.66	-0.63	8.53
4,592.0	12.00	171.40	4,516.7	-732.0	226.8	-123.2	2.03	2.00	1.79
4,687.0	11.30	155.20	4,609.8	-750.2	232.1	-126.0	3.51	-0.74	-17.05
4,782.0	10.80	154.90	4,703.0	-766.7	239.8	-131.3	0.53	-0.53	-0.32
4,878.0	10.80	163.90	4,797.3	-783.5	246.1	-135.3	1.75	0.00	9.38
4,973.0	11.30	167.20	4,890.6	-801.1	250.7	-137.3	0.85	0.53	3.47
5,068.0	11.30	170.40	4,983.7	-819.4	254.3	-138.4	0.66	0.00	3.37
5,163.0	9.60	165.30	5,077.1	-836.2	257.8	-139.6	2.04	-1.79	-5.37
5,258.0	10.60	168.80	5,170.7	-852.5	261.5	-141.0	1.23	1.05	3.68
5,353.0	10.90	167.00	5,264.0	-869.8	265.3	-142.3	0.47	0.32	-1.89
5,448.0	9.00	163.00	5,357.6	-885.6	269.5	-144.2	2.13	-2.00	-4.21
5,543.0	7.30	166.00	5,451.6	-898.6	273.1	-146.0	1.84	-1.79	3.16
5,638.0	5.50	158.20	5,546.0	-908.7	276.2	-147.8	2.10	-1.89	-8.21
5,733.0	5.60	159.30	5,640.6	-917.3	279.6	-149.9	0.15	0.11	1.16
5,829.0	5.00	158.10	5,736.2	-925.5	282.8	-151.9	0.64	-0.63	-1.25
5,924.0	3.90	146.10	5,830.9	-932.0	286.1	-154.3	1.51	-1.16	-12.63
6,019.0	3.10	129.40	5,925.7	-936.4	289.9	-157.5	1.36	-0.84	-17.58
6,114.0	0.50	93.20	6,020.6	-938.0	292.3	-159.6	2.86	-2.74	-38.11

<b>Company:</b>	Bayswater Exploration & Production, LLC	<b>Local Co-ordinate Reference:</b>	Well Arellano S-10-9HN
<b>Project:</b>	SEC.10-T5N-R65W	<b>TVD Reference:</b>	WELL @ 4638.5ft (RKB - 22.5')
<b>Site:</b>	Arellano 10-L Pad Sec.10-T5N-R65W	<b>MD Reference:</b>	WELL @ 4638.5ft (RKB - 22.5')
<b>Well:</b>	Arellano S-10-9HN	<b>North Reference:</b>	True
<b>Wellbore:</b>	Wellbore #1	<b>Survey Calculation Method:</b>	Minimum Curvature
<b>Design:</b>	Wellbore #1	<b>Database:</b>	EDMNEW

## Survey

Measured Depth (ft)	Inclination (°)	Azimuth (°)	Vertical Depth (ft)	+N/-S (ft)	+E/-W (ft)	Vertical Section (ft)	Dogleg Rate (°/100ft)	Build Rate (°/100ft)	Turn Rate (°/100ft)
6,209.0	0.20	268.80	6,115.6	-938.0	292.6	-159.9	0.74	-0.32	184.84
6,257.0	3.30	274.80	6,163.6	-937.9	291.1	-158.4	6.46	6.46	12.50
6,304.0	6.90	272.10	6,210.4	-937.7	286.9	-154.3	7.67	7.66	-5.74
6,352.0	11.50	271.80	6,257.8	-937.4	279.3	-146.8	9.58	9.58	-0.63
6,399.0	13.90	270.60	6,303.6	-937.2	268.9	-136.6	5.14	5.11	-2.55
6,447.0	16.70	268.40	6,349.9	-937.4	256.3	-124.0	5.96	5.83	-4.58
6,494.0	21.10	268.30	6,394.4	-937.8	241.1	-108.9	9.36	9.36	-0.21
6,542.0	23.40	269.00	6,438.8	-938.2	222.9	-90.8	4.82	4.79	1.46
6,589.0	26.30	269.30	6,481.4	-938.5	203.1	-71.2	6.18	6.17	0.64
6,637.0	30.20	270.70	6,523.7	-938.5	180.4	-48.7	8.24	8.13	2.92
6,685.0	34.70	271.30	6,564.2	-938.0	154.7	-23.3	9.40	9.38	1.25
6,733.0	38.10	271.30	6,602.8	-937.4	126.2	4.8	7.08	7.08	0.00
6,780.0	40.40	270.70	6,639.2	-936.9	96.5	34.2	4.96	4.89	-1.28
6,828.0	44.40	267.90	6,674.7	-937.3	64.1	66.3	9.21	8.33	-5.83
6,875.0	49.60	267.20	6,706.7	-938.8	29.8	100.5	11.12	11.06	-1.49
6,923.0	55.10	267.40	6,736.0	-940.6	-8.1	138.3	11.46	11.46	0.42
6,971.0	58.40	267.70	6,762.4	-942.3	-48.2	178.3	6.89	6.88	0.63
7,019.0	59.80	267.70	6,787.0	-943.9	-89.4	219.2	2.92	2.92	0.00
7,066.0	63.30	267.00	6,809.4	-945.9	-130.7	260.4	7.56	7.45	-1.49
7,114.0	68.80	268.40	6,828.9	-947.6	-174.5	304.0	11.76	11.46	2.92
7,161.0	74.40	269.70	6,843.7	-948.3	-219.1	348.3	12.20	11.91	2.77
7,209.0	78.80	271.60	6,854.8	-947.8	-265.7	394.4	9.94	9.17	3.96
7,257.0	80.50	272.80	6,863.4	-946.0	-312.9	440.9	4.31	3.54	2.50
7,305.0	82.50	273.20	6,870.5	-943.5	-360.3	487.5	4.25	4.17	0.83
7,321.0	84.50	272.70	6,872.3	-942.7	-376.2	503.1	12.88	12.50	-3.13
7,432.0	90.20	274.80	6,877.5	-935.4	-486.8	611.6	5.47	5.14	1.89
7,480.0	90.40	272.50	6,877.2	-932.4	-534.7	658.6	4.81	0.42	-4.79
7,526.0	90.50	270.90	6,876.9	-931.0	-580.7	704.0	3.48	0.22	-3.48
7,620.0	89.90	269.90	6,876.5	-930.4	-674.7	797.0	1.24	-0.64	-1.06
7,712.0	90.80	271.30	6,876.0	-929.4	-766.6	888.0	1.81	0.98	1.52
7,803.0	90.70	268.40	6,874.8	-929.6	-857.6	978.1	3.19	-0.11	-3.19
7,895.0	89.30	267.70	6,874.8	-932.8	-949.6	1,069.6	1.70	-1.52	-0.76
7,987.0	89.40	267.70	6,875.8	-936.5	-1,041.5	1,161.1	0.11	0.11	0.00
8,078.0	88.80	268.60	6,877.3	-939.4	-1,132.4	1,251.6	1.19	-0.66	0.99
8,170.0	88.80	268.40	6,879.2	-941.8	-1,224.4	1,343.0	0.22	0.00	-0.22
8,262.0	89.20	270.60	6,880.8	-942.6	-1,316.4	1,434.2	2.43	0.43	2.39
8,353.0	90.60	268.40	6,880.9	-943.4	-1,407.3	1,524.4	2.87	1.54	-2.42
8,443.0	89.60	267.90	6,880.8	-946.3	-1,497.3	1,613.9	1.24	-1.11	-0.56
8,535.0	89.70	269.30	6,881.4	-948.5	-1,589.3	1,705.3	1.53	0.11	1.52
8,627.0	90.00	270.70	6,881.6	-948.5	-1,681.3	1,796.4	1.56	0.33	1.52
8,719.0	90.50	271.30	6,881.2	-946.9	-1,773.2	1,887.3	0.85	0.54	0.65
8,811.0	90.20	270.40	6,880.6	-945.6	-1,865.2	1,978.2	1.03	-0.33	-0.98
8,902.0	90.40	270.40	6,880.2	-944.9	-1,956.2	2,068.2	0.22	0.22	0.00
8,993.0	90.70	270.90	6,879.3	-943.9	-2,047.2	2,158.2	0.64	0.33	0.55
9,084.0	90.00	269.50	6,878.7	-943.6	-2,138.2	2,248.3	1.72	-0.77	-1.54
9,176.0	90.00	269.00	6,878.7	-944.8	-2,230.2	2,339.5	0.54	0.00	-0.54
9,268.0	90.80	269.00	6,878.1	-946.4	-2,322.2	2,430.9	0.87	0.87	0.00
9,359.0	90.70	268.30	6,876.9	-948.5	-2,413.2	2,521.3	0.78	-0.11	-0.77
9,451.0	90.70	268.40	6,875.8	-951.2	-2,505.1	2,612.7	0.11	0.00	0.11
9,543.0	90.70	270.60	6,874.6	-952.0	-2,597.1	2,703.9	2.39	0.00	2.39
9,635.0	89.50	269.70	6,874.5	-951.8	-2,689.1	2,795.0	1.63	-1.30	-0.98
9,727.0	89.40	269.50	6,875.4	-952.4	-2,781.1	2,886.2	0.24	-0.11	-0.22
9,819.0	89.40	268.80	6,876.3	-953.8	-2,873.1	2,977.5	0.76	0.00	-0.76
9,911.0	91.80	269.30	6,875.4	-955.3	-2,965.0	3,068.8	2.66	2.61	0.54

<b>Company:</b>	Bayswater Exploration & Production, LLC	<b>Local Co-ordinate Reference:</b>	Well Arellano S-10-9HN
<b>Project:</b>	SEC.10-T5N-R65W	<b>TVD Reference:</b>	WELL @ 4638.5ft (RKB - 22.5')
<b>Site:</b>	Arellano 10-L Pad Sec.10-T5N-R65W	<b>MD Reference:</b>	WELL @ 4638.5ft (RKB - 22.5')
<b>Well:</b>	Arellano S-10-9HN	<b>North Reference:</b>	True
<b>Wellbore:</b>	Wellbore #1	<b>Survey Calculation Method:</b>	Minimum Curvature
<b>Design:</b>	Wellbore #1	<b>Database:</b>	EDMNEW

## Survey

Measured Depth (ft)	Inclination (°)	Azimuth (°)	Vertical Depth (ft)	+N/-S (ft)	+E/-W (ft)	Vertical Section (ft)	Dogleg Rate (°/100ft)	Build Rate (°/100ft)	Turn Rate (°/100ft)
10,003.0	89.90	269.50	6,874.0	-956.3	-3,057.0	3,160.0	2.08	-2.07	0.22
10,095.0	90.70	270.90	6,873.5	-955.9	-3,149.0	3,251.1	1.75	0.87	1.52
10,187.0	88.90	270.20	6,873.8	-955.0	-3,241.0	3,342.0	2.10	-1.96	-0.76
10,279.0	89.20	269.90	6,875.4	-955.0	-3,333.0	3,433.1	0.46	0.33	-0.33
10,373.0	89.10	269.90	6,876.8	-955.1	-3,427.0	3,526.2	0.11	-0.11	0.00
10,468.0	89.30	269.90	6,878.1	-955.3	-3,522.0	3,620.3	0.21	0.21	0.00
10,562.0	90.20	269.10	6,878.5	-956.1	-3,616.0	3,713.5	1.28	0.96	-0.85
10,656.0	90.00	269.00	6,878.3	-957.7	-3,710.0	3,806.8	0.24	-0.21	-0.11
10,750.0	90.30	268.30	6,878.1	-959.9	-3,803.9	3,900.2	0.81	0.32	-0.74
10,845.0	90.50	269.00	6,877.4	-962.1	-3,898.9	3,994.6	0.77	0.21	0.74
10,939.0	89.70	269.70	6,877.3	-963.2	-3,992.9	4,087.8	1.13	-0.85	0.74
11,033.0	89.80	269.50	6,877.7	-963.9	-4,086.9	4,181.0	0.24	0.11	-0.21
11,127.0	89.40	268.80	6,878.3	-965.2	-4,180.9	4,274.3	0.86	-0.43	-0.74
11,222.0	89.00	267.70	6,879.7	-968.1	-4,275.8	4,368.7	1.23	-0.42	-1.16
11,317.0	90.10	269.00	6,880.4	-970.9	-4,370.8	4,463.1	1.79	1.16	1.37
11,411.0	89.90	268.80	6,880.4	-972.7	-4,464.8	4,556.4	0.30	-0.21	-0.21
11,505.0	90.50	270.20	6,880.1	-973.5	-4,558.8	4,649.6	1.62	0.64	1.49
11,599.0	90.00	269.30	6,879.7	-973.9	-4,652.8	4,742.8	1.10	-0.53	-0.96
11,693.0	90.30	270.60	6,879.4	-974.0	-4,746.8	4,835.9	1.42	0.32	1.38
11,787.0	90.80	270.00	6,878.5	-973.5	-4,840.7	4,928.9	0.83	0.53	-0.64
11,882.0	91.30	269.70	6,876.8	-973.8	-4,935.7	5,023.0	0.61	0.53	-0.32
11,976.0	90.20	268.30	6,875.5	-975.4	-5,029.7	5,116.3	1.89	-1.17	-1.49
12,070.0	89.50	270.60	6,875.8	-976.3	-5,123.7	5,209.5	2.56	-0.74	2.45
12,165.0	89.40	269.70	6,876.7	-976.0	-5,218.7	5,303.6	0.95	-0.11	-0.95
12,259.0	89.50	269.70	6,877.6	-976.5	-5,312.7	5,396.7	0.11	0.11	0.00
12,353.0	89.70	269.90	6,878.3	-976.9	-5,406.7	5,489.9	0.30	0.21	0.21
12,447.0	89.60	269.50	6,878.8	-977.4	-5,500.7	5,583.0	0.44	-0.11	-0.43
12,541.0	90.30	268.80	6,878.9	-978.8	-5,594.7	5,676.3	1.05	0.74	-0.74
12,635.0	90.00	268.40	6,878.7	-981.1	-5,688.6	5,769.7	0.53	-0.32	-0.43
12,729.0	90.90	269.90	6,877.9	-982.4	-5,782.6	5,862.9	1.86	0.96	1.60
12,824.0	90.90	269.70	6,876.4	-982.8	-5,877.6	5,957.1	0.21	0.00	-0.21
12,917.0	90.90	269.10	6,875.0	-983.8	-5,970.6	6,049.3	0.65	0.00	-0.65
13,012.0	90.70	268.40	6,873.6	-985.8	-6,065.6	6,143.6	0.77	-0.21	-0.74
13,105.0	90.20	269.00	6,872.9	-987.9	-6,158.5	6,236.0	0.84	-0.54	0.65
13,199.0	90.90	268.60	6,872.0	-989.9	-6,252.5	6,329.3	0.86	0.74	-0.43
13,294.0	89.90	268.40	6,871.4	-992.4	-6,347.5	6,423.7	1.07	-1.05	-0.21
13,388.0	89.30	269.90	6,872.0	-993.8	-6,441.4	6,517.0	1.72	-0.64	1.60
13,482.0	89.70	269.90	6,872.8	-993.9	-6,535.4	6,610.1	0.43	0.43	0.00
13,576.0	88.10	270.90	6,874.6	-993.3	-6,629.4	6,703.1	2.01	-1.70	1.06
13,670.0	88.40	271.10	6,877.5	-991.7	-6,723.4	6,795.9	0.38	0.32	0.21
13,764.0	89.30	270.20	6,879.4	-990.6	-6,817.3	6,888.8	1.35	0.96	-0.96
13,858.0	89.30	270.70	6,880.5	-989.8	-6,911.3	6,981.8	0.53	0.00	0.53
13,986.0	89.80	269.70	6,881.5	-989.4	-7,039.3	7,108.5	0.87	0.39	-0.78
14,041.0	89.80	269.70	6,881.7	-989.7	-7,094.3	7,163.0	0.00	0.00	0.00
<b>BHL 560'FSL &amp; 2170'FEL, Sec.9</b>									

<b>Company:</b>	Bayswater Exploration & Production, LLC	<b>Local Co-ordinate Reference:</b>	Well Arellano S-10-9HN
<b>Project:</b>	SEC.10-T5N-R65W	<b>TVD Reference:</b>	WELL @ 4638.5ft (RKB - 22.5')
<b>Site:</b>	Arellano 10-L Pad Sec.10-T5N-R65W	<b>MD Reference:</b>	WELL @ 4638.5ft (RKB - 22.5')
<b>Well:</b>	Arellano S-10-9HN	<b>North Reference:</b>	True
<b>Wellbore:</b>	Wellbore #1	<b>Survey Calculation Method:</b>	Minimum Curvature
<b>Design:</b>	Wellbore #1	<b>Database:</b>	EDMNEW

Design Targets									
Target Name	Dip Angle	Dip Dir.	TVD	+N/-S	+E/-W	Northing	Easting	Latitude	Longitude
- hit/miss target	(°)	(°)	(ft)	(ft)	(ft)	(ft)	(ft)		
- Shape									
SHL 1509'FSL & 330'I - survey hits target center - Point	0.00	0.00	1.0	0.0	0.0	1,393,629.14	3,239,140.85	40.410735	-104.641208
BHL 560'FSL & 2170'I - survey misses target center by 7.5ft at 14041.0ft MD (6881.7 TVD, -989.7 N, -7094.3 E) - Point	0.00	0.00	6,875.0	-992.2	-7,096.5	1,392,568.25	3,232,054.34	40.408009	-104.666691

Checked By: _____	Approved By: _____	Date: _____
-------------------	--------------------	-------------