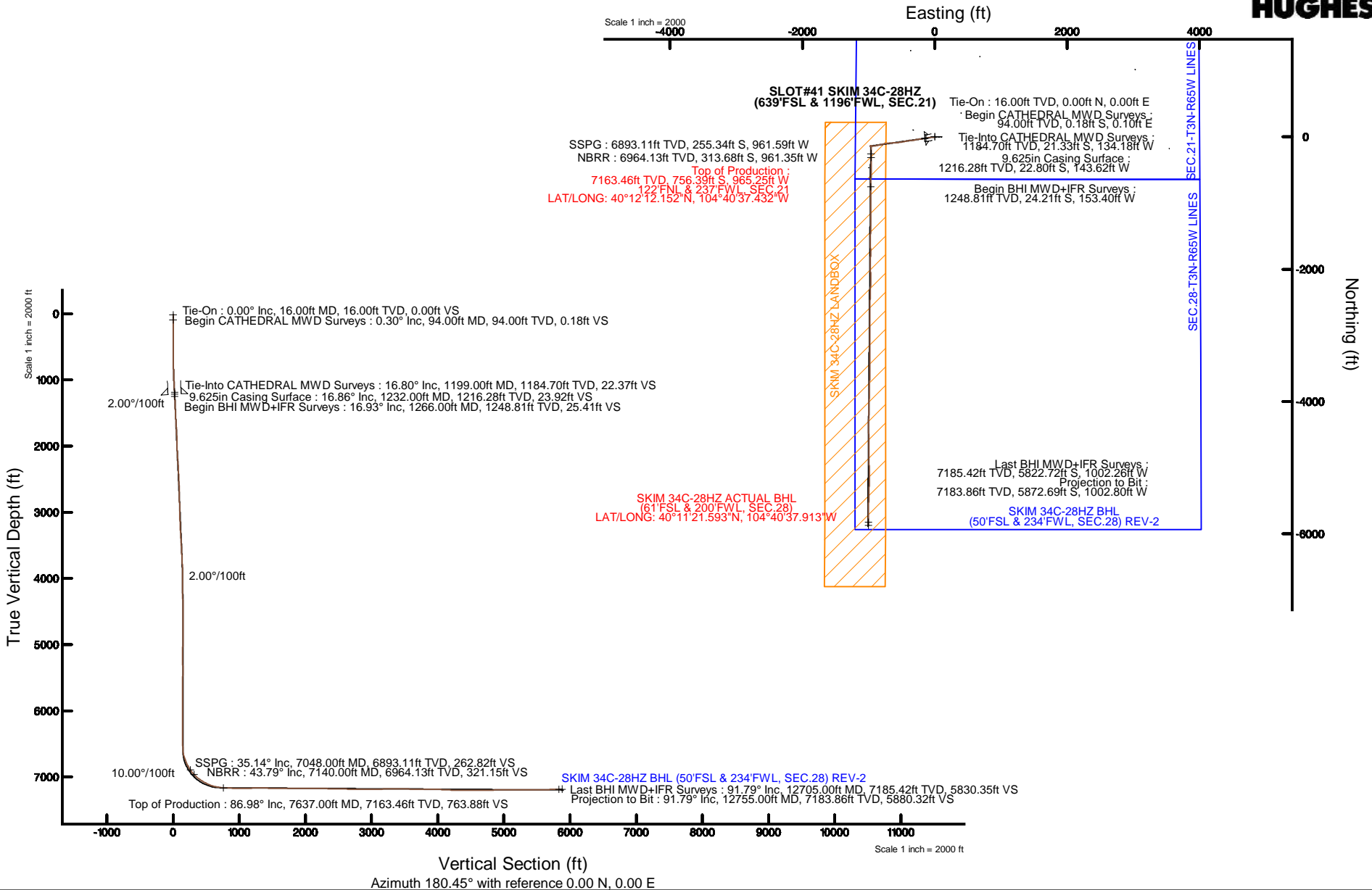


KERR-MCGEE OIL & GAS ONSHORE LP (WA)

Plot reference wellpath is SKIM 34C-28HZ (REV-C.0) PWP	
True vertical depths are referenced to XTREME 23 (16'KB) (RKB)	Grid System: NAD83 / UTM Zone 13 North, US feet
Measured depths are referenced to XTREME 23 (16'KB) (RKB)	North Reference: True north
XTREME 23 (16'KB) (RKB) to Mean Sea Level: 4862 feet	Scale: True distance
Mean Sea Level to Mud line (At Slot: SLOT#41 SKIM 34C-28HZ (639'FSL & 1196'FWL, SEC.21)) : 0 feet	Depths are in feet
Coordinates are in feet referenced to Slot	Created by: precain on 6/11/2015

Location: COLORADO Slot: SLOT#41 SKIM 34C-28HZ (639'FSL & 1196'FWL, SEC.21)
 Field: WELD COUNTY (UTM/TRUE NORTH) Well: SKIM 34C-28HZ
 Facility: SEC.21-T3N-R65W Wellbore: SKIM 34C-28HZ PWB



REFERENCE WELLPATH IDENTIFICATION			
Operator	KERR-MCGEE OIL & GAS ONSHORE LP (WA)	Slot	SLOT#41 SKIM 34C-28HZ (639'FSL & 1196'FWL, SEC.21)
Area	COLORADO	Well	SKIM 34C-28HZ
Field	WELD COUNTY (UTM/TRUE NORTH)	Wellbore	SKIM 34C-28HZ AWB <12755>
Facility	SEC.21-T3N-R65W		

REPORT SETUP INFORMATION			
Projection System	NAD83 / UTM Zone 13 North, US feet	Software System	WellArchitect® 4.1.1
North Reference	True	User	Precairn
Scale	0.99961	Report Generated	6/11/2015 at 5:08:11 PM
Convergence at slot	0.21° East	Database/Source file	WellArchitectAPC/SKIM_34C-28HZ_AWB__12755_.xml

WELLPATH LOCATION						
	Local coordinates		Grid coordinates		Geographic coordinates	
	North[ft]	East[ft]	Easting[US ft]	Northing[US ft]	Latitude	Longitude
Slot Location	-3678.60	-2457.73	1731548.36	14601715.72	40°12'19.627"N	104°40'24.992"W
Facility Reference Pt			1733991.21	14605402.13	40°12'55.980"N	104°39'53.316"W
Field Reference Pt			1698235.31	14552047.82	40°04'09.600"N	104°47'36.000"W

WELLPATH DATUM			
Calculation method	Minimum curvature	XTREME 23 (16'KB) (RKB) to Facility Vertical Datum	4862.00ft
Horizontal Reference Pt	Slot	XTREME 23 (16'KB) (RKB) to Mean Sea Level	4862.00ft
Vertical Reference Pt	XTREME 23 (16'KB) (RKB)	XTREME 23 (16'KB) (RKB) to Mud Line at Slot (SLOT#41 SKIM 34C-28HZ (639'FSL & 1196'FWL, SEC.21))	4862.00ft
MD Reference Pt	XTREME 23 (16'KB) (RKB)	Section Origin	N 0.00, E 0.00 ft
Field Vertical Reference	Mean Sea Level	Section Azimuth	180.45°

REFERENCE WELLPATH IDENTIFICATION			
Operator	KERR-MCGEE OIL & GAS ONSHORE LP (WA)	Slot	SLOT#41 SKIM 34C-28HZ (639'FSL & 1196'FWL, SEC.21)
Area	COLORADO	Well	SKIM 34C-28HZ
Field	WELD COUNTY (UTM/TRUE NORTH)	Wellbore	SKIM 34C-28HZ AWB <12755>
Facility	SEC.21-T3N-R65W		

WELLPATH DATA (134 stations) † = interpolated/extrapolated station											
MD [ft]	Inclination [°]	Azimuth [°]	TVD [ft]	Vert Sect [ft]	North [ft]	East [ft]	Latitude	Longitude	DLS [°/100ft]	Comments	
0.00†	0.000	151.900	0.00	0.00	0.00	0.00	40°12'19.627"N	104°40'24.992"W	0.00		
16.00	0.000	151.900	16.00	0.00	0.00	0.00	40°12'19.627"N	104°40'24.992"W	0.00		Tie-On
94.00	0.300	151.900	94.00	0.18	-0.18	0.10	40°12'19.625"N	104°40'24.991"W	0.38		Begin CATHEDRAL MWD Surveys
157.00	0.400	118.500	157.00	0.43	-0.43	0.37	40°12'19.623"N	104°40'24.987"W	0.35		
215.00	0.500	98.400	215.00	0.56	-0.56	0.80	40°12'19.621"N	104°40'24.982"W	0.32		
275.00	0.400	118.700	274.99	0.69	-0.70	1.24	40°12'19.620"N	104°40'24.976"W	0.31		
333.00	0.500	213.900	332.99	1.00	-1.01	1.27	40°12'19.617"N	104°40'24.976"W	1.15		
398.00	1.800	245.200	397.98	1.67	-1.67	0.19	40°12'19.610"N	104°40'24.990"W	2.15		
461.00	2.600	256.700	460.93	2.43	-2.42	-2.10	40°12'19.603"N	104°40'25.019"W	1.44		
525.00	4.200	266.100	524.82	2.96	-2.91	-5.85	40°12'19.598"N	104°40'25.067"W	2.64		
589.00	5.800	269.900	588.57	3.16	-3.08	-11.42	40°12'19.597"N	104°40'25.139"W	2.55		
653.00	7.600	268.400	652.13	3.35	-3.20	-18.89	40°12'19.595"N	104°40'25.235"W	2.83		
717.00	8.600	265.200	715.49	3.94	-3.72	-27.89	40°12'19.590"N	104°40'25.351"W	1.71		
781.00	9.400	260.800	778.71	5.25	-4.95	-37.81	40°12'19.578"N	104°40'25.479"W	1.65		
844.00	10.100	261.000	840.80	7.02	-6.64	-48.35	40°12'19.561"N	104°40'25.615"W	1.11		
908.00	11.700	259.800	903.64	9.14	-8.67	-60.28	40°12'19.541"N	104°40'25.769"W	2.52		
972.00	13.300	259.300	966.12	11.76	-11.18	-73.90	40°12'19.516"N	104°40'25.944"W	2.51		
1034.00	15.000	259.700	1026.24	14.63	-13.94	-88.80	40°12'19.489"N	104°40'26.137"W	2.75		
1099.00	16.200	261.200	1088.84	17.66	-16.83	-106.04	40°12'19.461"N	104°40'26.359"W	1.95		
1163.00	16.700	260.800	1150.22	20.63	-19.67	-123.94	40°12'19.433"N	104°40'26.589"W	0.80		
1199.00	16.800	260.800	1184.70	22.37	-21.33	-134.18	40°12'19.416"N	104°40'26.721"W	0.28		Tie-Into CATHEDRAL MWD Surveys
1266.00	16.930	262.140	1248.81	25.41	-24.21	-153.40	40°12'19.388"N	104°40'26.969"W	0.61		Begin BHI MWD+IFR Surveys
1457.00	17.110	261.040	1431.45	34.01	-32.39	-208.71	40°12'19.307"N	104°40'27.682"W	0.19		
1552.00	16.930	260.900	1522.29	38.59	-36.75	-236.17	40°12'19.264"N	104°40'28.036"W	0.19		
1647.00	16.810	259.570	1613.20	43.48	-41.43	-263.34	40°12'19.218"N	104°40'28.386"W	0.43		
1742.00	15.830	257.390	1704.37	49.00	-46.75	-289.49	40°12'19.165"N	104°40'28.723"W	1.22		
1837.00	16.790	261.360	1795.55	54.09	-51.64	-315.70	40°12'19.117"N	104°40'29.061"W	1.55		
1932.00	16.620	266.990	1886.55	57.08	-54.41	-342.84	40°12'19.089"N	104°40'29.411"W	1.71		
2027.00	17.140	264.420	1977.46	59.37	-56.48	-370.34	40°12'19.069"N	104°40'29.765"W	0.96		
2122.00	18.160	260.640	2067.99	63.36	-60.25	-398.88	40°12'19.032"N	104°40'30.133"W	1.61		
2217.00	17.470	258.390	2158.43	68.86	-65.53	-427.46	40°12'18.979"N	104°40'30.501"W	1.03		
2312.00	16.820	256.620	2249.21	75.12	-71.58	-454.80	40°12'18.920"N	104°40'30.854"W	0.88		
2407.00	16.470	260.720	2340.23	80.68	-76.93	-481.46	40°12'18.867"N	104°40'31.197"W	1.29		
2501.00	16.190	260.730	2430.44	85.14	-81.19	-507.54	40°12'18.825"N	104°40'31.533"W	0.30		
2596.00	16.490	264.110	2521.60	88.87	-84.71	-534.03	40°12'18.790"N	104°40'31.875"W	1.05		
2692.00	16.900	265.120	2613.56	91.66	-87.30	-561.48	40°12'18.764"N	104°40'32.229"W	0.52		
2787.00	18.380	266.090	2704.09	94.08	-89.49	-590.19	40°12'18.743"N	104°40'32.599"W	1.59		
2882.00	18.140	265.480	2794.30	96.50	-91.68	-619.87	40°12'18.721"N	104°40'32.981"W	0.32		
3073.00	17.190	265.850	2976.30	101.34	-96.07	-677.66	40°12'18.678"N	104°40'33.726"W	0.50		
3264.00	14.720	263.690	3159.93	106.45	-100.78	-729.94	40°12'18.631"N	104°40'34.400"W	1.33		
3359.00	14.860	258.050	3251.78	110.49	-104.62	-753.86	40°12'18.593"N	104°40'34.708"W	1.52		
3454.00	14.320	257.230	3343.72	115.79	-109.74	-777.23	40°12'18.542"N	104°40'35.009"W	0.61		
3549.00	14.170	255.770	3435.80	121.42	-115.20	-799.96	40°12'18.488"N	104°40'35.302"W	0.41		
3645.00	14.720	256.200	3528.76	127.40	-121.00	-823.20	40°12'18.431"N	104°40'35.602"W	0.58		
3740.00	13.130	259.600	3620.97	132.40	-125.82	-845.53	40°12'18.383"N	104°40'35.889"W	1.88		

REFERENCE WELLPATH IDENTIFICATION			
Operator	KERR-MCGEE OIL & GAS ONSHORE LP (WA)	Slot	SLOT#41 SKIM 34C-28HZ (639'FSL & 1196'FWL, SEC.21)
Area	COLORADO	Well	SKIM 34C-28HZ
Field	WELD COUNTY (UTM/TRUE NORTH)	Wellbore	SKIM 34C-28HZ AWP <12755>
Facility	SEC.21-T3N-R65W		

WELLPATH DATA (134 stations) † = interpolated/extrapolated station										
MD [ft]	Inclination [°]	Azimuth [°]	TVD [ft]	Vert Sect [ft]	North [ft]	East [ft]	Latitude	Longitude	DLS [°/100ft]	Comments
3835.00	11.210	256.590	3713.83	136.64	-129.91	-865.13	40°12'18.343"N	104°40'36.142"W	2.13	
3931.00	11.710	258.640	3807.92	140.87	-134.00	-883.76	40°12'18.303"N	104°40'36.382"W	0.67	
4026.00	11.920	267.180	3900.91	143.40	-136.38	-903.01	40°12'18.279"N	104°40'36.630"W	1.85	
4121.00	11.570	265.350	3993.92	144.81	-137.63	-922.31	40°12'18.267"N	104°40'36.879"W	0.54	
4216.00	9.640	269.490	4087.30	145.79	-138.48	-939.76	40°12'18.258"N	104°40'37.104"W	2.18	
4311.00	6.930	267.980	4181.30	146.17	-138.75	-953.44	40°12'18.256"N	104°40'37.280"W	2.86	
4407.00	4.600	263.020	4276.81	146.91	-139.42	-963.05	40°12'18.249"N	104°40'37.404"W	2.48	
4501.00	1.340	246.430	4370.67	147.85	-140.32	-967.80	40°12'18.240"N	104°40'37.465"W	3.55	
4596.00	0.690	195.590	4465.65	148.85	-141.32	-968.97	40°12'18.230"N	104°40'37.480"W	1.11	
4787.00	0.340	227.820	4656.65	150.35	-142.80	-969.70	40°12'18.216"N	104°40'37.490"W	0.23	
5166.00	1.280	342.920	5035.62	147.07	-139.51	-971.78	40°12'18.248"N	104°40'37.517"W	0.38	
5261.00	0.860	111.890	5130.61	146.32	-138.76	-971.43	40°12'18.256"N	104°40'37.512"W	2.04	
5451.00	0.460	121.490	5320.60	147.24	-139.69	-969.46	40°12'18.246"N	104°40'37.487"W	0.22	
5546.00	0.360	74.890	5415.59	147.35	-139.81	-968.84	40°12'18.245"N	104°40'37.479"W	0.35	
5737.00	0.400	338.110	5606.59	146.57	-139.04	-968.51	40°12'18.253"N	104°40'37.474"W	0.30	
6022.00	0.800	255.690	5891.58	146.16	-138.61	-970.81	40°12'18.257"N	104°40'37.504"W	0.30	
6117.00	0.830	292.380	5986.57	146.07	-138.51	-972.09	40°12'18.258"N	104°40'37.521"W	0.54	
6212.00	0.740	306.660	6081.56	145.45	-137.88	-973.22	40°12'18.264"N	104°40'37.535"W	0.23	
6308.00	1.930	101.850	6177.55	145.41	-137.84	-972.13	40°12'18.265"N	104°40'37.521"W	2.73	
6403.00	1.600	94.860	6272.50	145.83	-138.28	-969.25	40°12'18.260"N	104°40'37.484"W	0.41	
6498.00	1.600	93.190	6367.46	145.99	-138.47	-966.60	40°12'18.258"N	104°40'37.450"W	0.05	
6594.00	1.780	103.550	6463.42	146.39	-138.89	-963.81	40°12'18.254"N	104°40'37.414"W	0.37	
6689.00	1.940	116.480	6558.37	147.43	-139.96	-960.94	40°12'18.244"N	104°40'37.377"W	0.47	
6784.00	12.520	177.790	6652.54	158.46	-151.00	-959.10	40°12'18.135"N	104°40'37.353"W	12.33	
6879.00	19.870	184.200	6743.72	184.90	-177.43	-959.88	40°12'17.873"N	104°40'37.363"W	7.95	
6974.00	28.560	180.370	6830.28	223.79	-216.32	-961.21	40°12'17.489"N	104°40'37.380"W	9.29	
7048.00†	35.135	180.694	6893.11	262.82	-255.34	-961.59	40°12'17.104"N	104°40'37.385"W	8.89	SSPG
7070.00	37.090	180.770	6910.88	275.78	-268.31	-961.75	40°12'16.975"N	104°40'37.387"W	8.89	
7140.00†	43.788	178.376	6964.13	321.15	-313.68	-961.35	40°12'16.527"N	104°40'37.382"W	9.82	NBRR
7165.00	46.190	177.660	6981.81	338.81	-331.34	-960.74	40°12'16.353"N	104°40'37.374"W	9.82	
7260.00	54.990	178.710	7042.06	412.08	-404.63	-958.46	40°12'15.628"N	104°40'37.345"W	9.30	
7355.00	63.490	181.010	7090.61	493.62	-486.18	-958.33	40°12'14.822"N	104°40'37.343"W	9.19	
7451.00	70.700	181.830	7127.95	581.98	-574.52	-960.54	40°12'13.949"N	104°40'37.371"W	7.55	
7546.00	79.250	182.210	7152.56	673.61	-666.13	-963.77	40°12'13.044"N	104°40'37.413"W	9.01	
7637.00†	86.980	179.689	7163.46	763.88	-756.39	-965.25	40°12'12.152"N	104°40'37.432"W	8.93	Top of Production
7641.00	87.320	179.580	7163.66	767.87	-760.38	-965.23	40°12'12.113"N	104°40'37.432"W	8.93	
7737.00	87.880	179.280	7167.68	863.77	-856.29	-964.27	40°12'11.165"N	104°40'37.419"W	0.66	
7832.00	88.740	179.160	7170.48	958.71	-951.24	-962.98	40°12'10.227"N	104°40'37.403"W	0.91	
7927.00	90.740	180.500	7170.91	1053.70	-1046.23	-962.70	40°12'09.288"N	104°40'37.399"W	2.53	
8022.00	91.010	179.860	7169.46	1148.68	-1141.22	-963.00	40°12'08.349"N	104°40'37.403"W	0.73	
8117.00	90.650	181.300	7168.08	1243.67	-1236.21	-963.96	40°12'07.411"N	104°40'37.415"W	1.56	
8212.00	89.540	181.400	7167.93	1338.66	-1331.18	-966.20	40°12'06.472"N	104°40'37.444"W	1.17	
8307.00	89.480	181.340	7168.74	1433.64	-1426.15	-968.47	40°12'05.534"N	104°40'37.473"W	0.09	
8402.00	89.910	180.260	7169.24	1528.64	-1521.13	-969.79	40°12'04.595"N	104°40'37.490"W	1.22	
8497.00	89.690	179.820	7169.57	1623.63	-1616.13	-969.86	40°12'03.656"N	104°40'37.491"W	0.52	

REFERENCE WELLPATH IDENTIFICATION			
Operator	KERR-MCGEE OIL & GAS ONSHORE LP (WA)	Slot	SLOT#41 SKIM 34C-28HZ (639'FSL & 1196'FWL, SEC.21)
Area	COLORADO	Well	SKIM 34C-28HZ
Field	WELD COUNTY (UTM/TRUE NORTH)	Wellbore	SKIM 34C-28HZ AWB <12755>
Facility	SEC.21-T3N-R65W		

WELLPATH DATA (134 stations)										
MD [ft]	Inclination [°]	Azimuth [°]	TVD [ft]	Vert Sect [ft]	North [ft]	East [ft]	Latitude	Longitude	DLS ["/100ft]	Comments
8593.00	90.000	179.140	7169.83	1719.62	-1712.13	-968.99	40°12'02.708"N	104°40'37.480"W	0.78	
8688.00	89.970	181.030	7169.86	1814.61	-1807.12	-969.13	40°12'01.769"N	104°40'37.482"W	1.99	
8783.00	89.880	180.190	7169.98	1909.61	-1902.12	-970.14	40°12'00.830"N	104°40'37.495"W	0.89	
8878.00	88.980	179.530	7170.93	2004.60	-1997.11	-969.91	40°11'59.891"N	104°40'37.492"W	1.17	
8974.00	89.750	178.610	7171.99	2100.57	-2093.09	-968.35	40°11'58.943"N	104°40'37.471"W	1.25	
9069.00	89.350	180.350	7172.74	2195.54	-2188.08	-967.49	40°11'58.004"N	104°40'37.460"W	1.88	
9164.00	88.520	182.140	7174.50	2290.51	-2283.04	-969.55	40°11'57.066"N	104°40'37.487"W	2.08	
9261.00	88.550	182.350	7176.98	2387.43	-2379.93	-973.35	40°11'56.108"N	104°40'37.536"W	0.22	
9356.00	88.000	181.790	7179.84	2482.35	-2474.82	-976.78	40°11'55.171"N	104°40'37.580"W	0.83	
9451.00	89.260	180.770	7182.12	2577.31	-2569.77	-978.90	40°11'54.232"N	104°40'37.607"W	1.71	
9547.00	89.290	180.550	7183.33	2673.30	-2665.76	-980.01	40°11'53.284"N	104°40'37.621"W	0.23	
9643.00	88.860	179.490	7184.88	2769.29	-2761.74	-980.04	40°11'52.335"N	104°40'37.622"W	1.19	
9738.00	90.030	180.120	7185.80	2864.27	-2856.74	-979.72	40°11'51.397"N	104°40'37.617"W	1.40	
9834.00	89.450	179.590	7186.24	2960.27	-2952.73	-979.48	40°11'50.448"N	104°40'37.614"W	0.82	
9929.00	91.480	180.980	7185.47	3055.26	-3047.72	-979.95	40°11'49.509"N	104°40'37.620"W	2.59	
10024.00	90.980	179.490	7183.43	3150.23	-3142.70	-980.34	40°11'48.571"N	104°40'37.625"W	1.65	
10120.00	92.040	179.660	7180.90	3246.19	-3238.66	-979.63	40°11'47.622"N	104°40'37.616"W	1.12	
10241.00	89.140	180.060	7179.65	3367.16	-3359.64	-979.33	40°11'46.427"N	104°40'37.612"W	2.42	
10336.00	89.290	180.430	7180.95	3462.15	-3454.63	-979.74	40°11'45.488"N	104°40'37.617"W	0.42	
10431.00	88.980	181.110	7182.39	3557.14	-3549.61	-981.01	40°11'44.550"N	104°40'37.634"W	0.79	
10526.00	89.320	180.710	7183.80	3652.12	-3644.59	-982.52	40°11'43.611"N	104°40'37.653"W	0.55	
10621.00	89.380	181.610	7184.87	3747.11	-3739.56	-984.44	40°11'42.673"N	104°40'37.678"W	0.95	
10717.00	89.380	180.950	7185.91	3843.09	-3835.53	-986.59	40°11'41.724"N	104°40'37.706"W	0.69	
10812.00	89.200	182.120	7187.09	3938.07	-3930.49	-989.13	40°11'40.786"N	104°40'37.738"W	1.25	
10907.00	88.250	181.390	7189.20	4033.02	-4025.42	-992.04	40°11'39.848"N	104°40'37.776"W	1.26	
11003.00	86.820	180.940	7193.33	4128.92	-4121.30	-993.99	40°11'38.900"N	104°40'37.801"W	1.56	
11098.00	87.540	181.570	7198.01	4223.79	-4216.17	-996.07	40°11'37.963"N	104°40'37.827"W	1.01	
11193.00	89.260	180.390	7200.66	4318.75	-4311.11	-997.69	40°11'37.024"N	104°40'37.848"W	2.20	
11288.00	90.030	179.790	7201.25	4413.74	-4406.11	-997.84	40°11'36.086"N	104°40'37.850"W	1.03	
11384.00	89.940	179.330	7201.27	4509.73	-4502.10	-997.11	40°11'35.137"N	104°40'37.841"W	0.49	
11478.00	90.960	179.310	7200.53	4603.71	-4596.09	-995.99	40°11'34.208"N	104°40'37.826"W	1.09	
11573.00	90.860	179.530	7199.02	4698.68	-4691.08	-995.03	40°11'33.270"N	104°40'37.814"W	0.25	
11668.00	90.770	178.990	7197.67	4793.65	-4786.06	-993.80	40°11'32.331"N	104°40'37.798"W	0.58	
11764.00	90.770	178.770	7196.38	4889.60	-4882.03	-991.93	40°11'31.383"N	104°40'37.774"W	0.23	
11859.00	90.740	178.750	7195.13	4984.55	-4977.00	-989.87	40°11'30.444"N	104°40'37.747"W	0.04	
11954.00	90.090	179.700	7194.44	5079.53	-5071.99	-988.59	40°11'29.506"N	104°40'37.731"W	1.21	
12049.00	90.220	180.680	7194.19	5174.53	-5166.99	-988.90	40°11'28.567"N	104°40'37.735"W	1.04	
12144.00	89.970	180.680	7194.03	5269.53	-5261.98	-990.03	40°11'27.628"N	104°40'37.749"W	0.26	
12240.00	90.220	181.810	7193.87	5365.51	-5357.95	-992.11	40°11'26.680"N	104°40'37.776"W	1.21	
12335.00	90.030	182.170	7193.66	5460.48	-5452.90	-995.41	40°11'25.741"N	104°40'37.818"W	0.43	
12430.00	91.110	180.890	7192.72	5555.45	-5547.85	-997.95	40°11'24.803"N	104°40'37.851"W	1.76	
12620.00	91.720	180.990	7188.03	5745.39	-5737.77	-1001.06	40°11'22.926"N	104°40'37.891"W	0.33	
12705.00	91.790	180.620	7185.42	5830.35	-5822.72	-1002.26	40°11'22.087"N	104°40'37.906"W	0.44	Last BHI MWD+IFR Surveys
12755.00	91.790	180.620	7183.86	5880.32	-5872.69	-1002.80	40°11'21.593"N	104°40'37.913"W	0.00	Projection to Bit

REFERENCE WELLPATH IDENTIFICATION			
Operator	KERR-MCGEE OIL & GAS ONSHORE LP (WA)	Slot	SLOT#41 SKIM 34C-28HZ (639'FSL & 1196'FWL, SEC.21)
Area	COLORADO	Well	SKIM 34C-28HZ
Field	WELD COUNTY (UTM/TRUE NORTH)	Wellbore	SKIM 34C-28HZ AWB <12755>
Facility	SEC.21-T3N-R65W		

HOLE & CASING SECTIONS - Ref Wellbore: SKIM 34C-28HZ AWB <12755> Ref Wellpath: SKIM 34C-28HZ AWP									
String/Diameter	Start MD [ft]	End MD [ft]	Interval [ft]	Start TVD [ft]	End TVD [ft]	Start N/S [ft]	Start E/W [ft]	End N/S [ft]	End E/W [ft]
13.5in Open Hole	16.00	1243.00	1227.00	16.00	1226.81	0.00	0.00	-23.27	-146.78
9.625in Casing Surface	16.00	1232.00	1216.00	16.00	1216.28	0.00	0.00	-22.80	-143.62
7.875in Open Hole	1243.00	12755.00	11512.00	1226.81	7183.86	-23.27	-146.78	-5872.69	-1002.80

TARGETS								
Name	TVD [ft]	North [ft]	East [ft]	Grid East [US ft]	Grid North [US ft]	Latitude	Longitude	Shape
SEC.21-T3N-R65W LINES	18.00	-1065.44	2632.96	1734184.18	14600660.39	40°12'09.097"N	104°39'51.059"W	polygon
SEC.28-T3N-R65W LINES	18.00	-1065.44	2632.96	1734184.18	14600660.39	40°12'09.097"N	104°39'51.059"W	polygon
SKIM 34C-28HZ BHL (50'FSL & 234'FWL, SEC.28) REV-2	7197.00	-5884.12	-1009.63	1730560.76	14595830.24	40°11'21.480"N	104°40'38.001"W	point
SKIM 34C-28HZ BHL ON PLAT (50'FSL & 213'FWL, SEC.28) REV-1	7197.00	-5884.12	-989.63	1730580.75	14595830.31	40°11'21.480"N	104°40'37.744"W	point
SKIM 34C-28HZ LANDBOX	7197.00	0.02	-0.03	1731548.32	14601715.74	40°12'19.627"N	104°40'24.992"W	polygon

WELLPATH COMPOSITION - Ref Wellbore: SKIM 34C-28HZ AWB <12755> Ref Wellpath: SKIM 34C-28HZ AWP					
Start MD [ft]	End MD [ft]	Positional Uncertainty Model	Log Name/Comment	Wellbore	
16.00	1199.00	Custom APC_ISCWSA REV 2 MWD	CATHEDRAL ENERGY MWD SURVEYS <94-1199>	SKIM 34C-28HZ AWB <12755>	
1199.00	12705.00	Custom APC_ISCWSA REV 2 MWD+IFR1+SC (approximation)	BHI MWD+IFR SURVEYS 7 7/8" HOLE <1266-12705>	SKIM 34C-28HZ AWB <12755>	
12705.00	12755.00	Blind Drilling (std)	Projection to bit	SKIM 34C-28HZ AWB <12755>	

REFERENCE WELLPATH IDENTIFICATION			
Operator	KERR-MCGEE OIL & GAS ONSHORE LP (WA)	Slot	SLOT#41 SKIM 34C-28HZ (639'FSL & 1196'FWL, SEC.21)
Area	COLORADO	Well	SKIM 34C-28HZ
Field	WELD COUNTY (UTM/TRUE NORTH)	Wellbore	SKIM 34C-28HZ AWB <12755>
Facility	SEC.21-T3N-R65W		

WELLPATH COMMENTS				
MD [ft]	Inclination [°]	Azimuth [°]	TVD [ft]	Comment
16.00	0.000	151.900	16.00	Tie-On
94.00	0.300	151.900	94.00	Begin CATHEDRAL MWD Surveys
1199.00	16.800	260.800	1184.70	Tie-Into CATHEDRAL MWD Surveys
1266.00	16.930	262.140	1248.81	Begin BHI MWD+IFR Surveys
7048.00	35.135	180.694	6893.11	SSPG
7140.00	43.788	178.376	6964.13	NBRR
7637.00	86.980	179.689	7163.46	Top of Production
12705.00	91.790	180.620	7185.42	Last BHI MWD+IFR Surveys
12755.00	91.790	180.620	7183.86	Projection to Bit