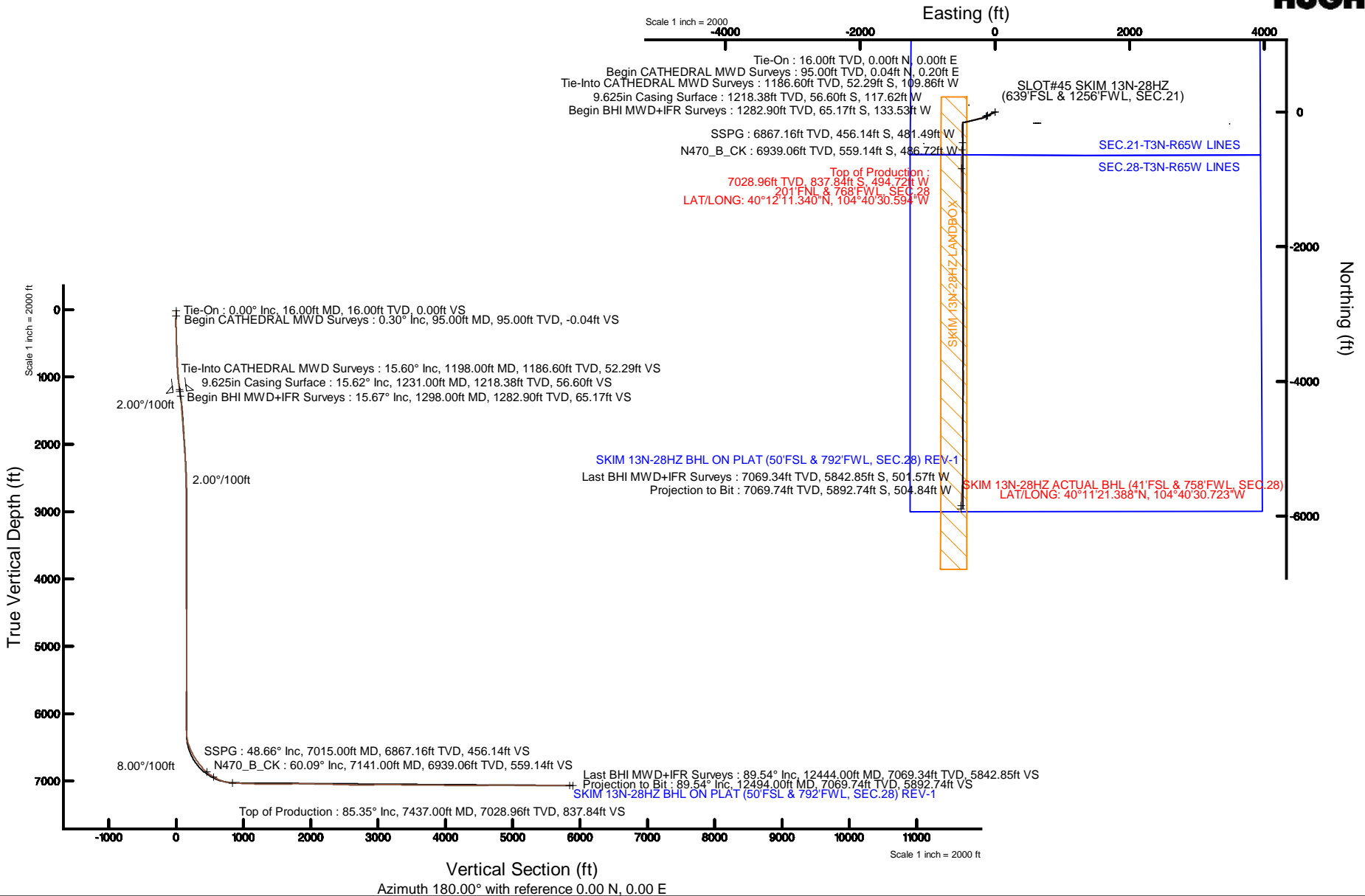


# KERR-MCGEE OIL & GAS ONSHORE LP (WA)

Location: COLORADO Slot: SLOT#45 SKIM 13N-28HZ (639'FSL & 1256'FWL, SEC.21)  
 Field: WELD COUNTY (UTM/TRUE NORTH) Well: SKIM 13N-28HZ  
 Facility: SEC.21-T3N-R65W Wellbore: SKIM 13N-28HZ PWB

Plot reference wellpath is SKIM 13N-28HZ (REV-A.0) PWP

True vertical depths are referenced to XTREME 23 (16'KB) (RKB)	Grid System: NAD83 / UTM Zone 13 North, US feet
Measured depths are referenced to XTREME 23 (16'KB) (RKB)	North Reference: True north
XTREME 23 (16'KB) (RKB) to Mean Sea Level: 4862 feet	Scale: True distance
Mean Sea Level to Mud line (At Slot: SLOT#45 SKIM 13N-28HZ (639'FSL & 1256'FWL, SEC.21)): 0 feet	Depths are in feet
Coordinates are in feet referenced to Slot	Created by: preacoin on 6/11/2015



REFERENCE WELLPATH IDENTIFICATION			
Operator	KERR-MCGEE OIL & GAS ONSHORE LP (WA)	Slot	SLOT#45 SKIM 13N-28HZ (639'FSL & 1256'FWL, SEC.21)
Area	COLORADO	Well	SKIM 13N-28HZ
Field	WELD COUNTY (UTM/TRUE NORTH)	Wellbore	SKIM 13N-28HZ AWB <12494>
Facility	SEC.21-T3N-R65W		

REPORT SETUP INFORMATION			
Projection System	NAD83 / UTM Zone 13 North, US feet	Software System	WellArchitect® 4.1.1
North Reference	True	User	Precairn
Scale	0.99961	Report Generated	6/11/2015 at 10:41:47 AM
Convergence at slot	0.21° East	Database/Source file	WellArchitectAPC/SKIM_13N-28HZ_AWB__12494_.xml

WELLPATH LOCATION						
	Local coordinates		Grid coordinates		Geographic coordinates	
	North[ft]	East[ft]	Easting[US ft]	Northing[US ft]	Latitude	Longitude
Slot Location	-3679.31	-2397.67	1731608.39	14601715.24	40°12'19.620"N	104°40'24.218"W
Facility Reference Pt			1733991.21	14605402.13	40°12'55.980"N	104°39'53.316"W
Field Reference Pt			1698235.31	14552047.82	40°04'09.600"N	104°47'36.000"W

WELLPATH DATUM			
Calculation method	Minimum curvature	XTREME 23 (16'KB) (RKB) to Facility Vertical Datum	4862.00ft
Horizontal Reference Pt	Slot	XTREME 23 (16'KB) (RKB) to Mean Sea Level	4862.00ft
Vertical Reference Pt	XTREME 23 (16'KB) (RKB)	XTREME 23 (16'KB) (RKB) to Mud Line at Slot (SLOT#45 SKIM 13N-28HZ (639'FSL & 1256'FWL, SEC.21))	4862.00ft
MD Reference Pt	XTREME 23 (16'KB) (RKB)	Section Origin	N 0.00, E 0.00 ft
Field Vertical Reference	Mean Sea Level	Section Azimuth	180.00°

REFERENCE WELLPATH IDENTIFICATION			
Operator	KERR-MCGEE OIL & GAS ONSHORE LP (WA)	Slot	SLOT#45 SKIM 13N-28HZ (639'FSL & 1256'FWL, SEC.21)
Area	COLORADO	Well	SKIM 13N-28HZ
Field	WELD COUNTY (UTM/TRUE NORTH)	Wellbore	SKIM 13N-28HZ AWB <12494>
Facility	SEC.21-T3N-R65W		

WELLPATH DATA (118 stations) † = interpolated/extrapolated station										
MD [ft]	Inclination [°]	Azimuth [°]	TVD [ft]	Vert Sect [ft]	North [ft]	East [ft]	Latitude	Longitude	DLS [°/100ft]	Comments
0.00†	0.000	79.300	0.00	0.00	0.00	0.00	40°12'19.620"N	104°40'24.218"W	0.00	
16.00	0.000	79.300	16.00	0.00	0.00	0.00	40°12'19.620"N	104°40'24.218"W	0.00	Tie-On
95.00	0.300	79.300	95.00	-0.04	0.04	0.20	40°12'19.620"N	104°40'24.215"W	0.38	Begin CATHEDRAL MWD Surveys
152.00	0.500	56.400	152.00	-0.20	0.20	0.56	40°12'19.622"N	104°40'24.211"W	0.44	
213.00	0.500	105.500	213.00	-0.28	0.28	1.04	40°12'19.623"N	104°40'24.205"W	0.68	
271.00	0.500	131.700	270.99	-0.04	0.04	1.47	40°12'19.620"N	104°40'24.199"W	0.39	
329.00	1.000	195.700	328.99	0.61	-0.61	1.52	40°12'19.614"N	104°40'24.198"W	1.55	
387.00	2.100	221.200	386.97	1.90	-1.90	0.68	40°12'19.601"N	104°40'24.209"W	2.19	
445.00	3.200	223.900	444.91	3.86	-3.86	-1.14	40°12'19.582"N	104°40'24.233"W	1.91	
510.00	3.900	234.200	509.78	6.46	-6.46	-4.19	40°12'19.556"N	104°40'24.272"W	1.45	
573.00	4.600	244.300	572.61	8.81	-8.81	-8.20	40°12'19.533"N	104°40'24.324"W	1.62	
638.00	5.400	242.800	637.36	11.34	-11.34	-13.27	40°12'19.508"N	104°40'24.389"W	1.25	
701.00	6.500	250.800	700.02	13.87	-13.87	-19.28	40°12'19.483"N	104°40'24.466"W	2.18	
765.00	7.900	252.100	763.51	16.41	-16.41	-26.88	40°12'19.458"N	104°40'24.564"W	2.20	
829.00	9.200	253.500	826.80	19.22	-19.22	-35.98	40°12'19.430"N	104°40'24.682"W	2.06	
894.00	10.700	250.600	890.82	22.70	-22.70	-46.65	40°12'19.396"N	104°40'24.819"W	2.43	
957.00	12.400	248.300	952.55	27.14	-27.14	-58.45	40°12'19.352"N	104°40'24.971"W	2.80	
1020.00	12.700	245.200	1014.04	32.55	-32.55	-71.02	40°12'19.298"N	104°40'25.133"W	1.17	
1084.00	13.600	244.000	1076.36	38.80	-38.80	-84.17	40°12'19.237"N	104°40'25.303"W	1.47	
1147.00	15.000	242.100	1137.41	45.86	-45.86	-98.04	40°12'19.167"N	104°40'25.482"W	2.34	
1198.00	15.600	240.800	1186.60	52.29	-52.29	-109.86	40°12'19.103"N	104°40'25.634"W	1.36	Tie-Into CATHEDRAL MWD Surveys
1298.00	15.670	242.100	1282.90	65.17	-65.17	-133.53	40°12'18.976"N	104°40'25.939"W	0.36	Begin BHI MWD+IFR Surveys
1393.00	16.090	248.970	1374.28	75.90	-75.90	-157.16	40°12'18.870"N	104°40'26.243"W	2.03	
1488.00	16.270	256.360	1465.53	83.77	-83.77	-182.38	40°12'18.792"N	104°40'26.569"W	2.17	
1583.00	15.920	254.940	1556.81	90.29	-90.29	-207.89	40°12'18.728"N	104°40'26.897"W	0.55	
1678.00	16.780	255.820	1647.96	97.03	-97.03	-233.77	40°12'18.661"N	104°40'27.231"W	0.94	
1774.00	15.780	254.080	1740.11	104.01	-104.01	-259.76	40°12'18.592"N	104°40'27.566"W	1.16	
1869.00	17.200	255.840	1831.21	110.99	-110.99	-285.80	40°12'18.523"N	104°40'27.902"W	1.58	
1964.00	16.230	253.590	1922.19	118.18	-118.18	-312.16	40°12'18.452"N	104°40'28.241"W	1.23	
2059.00	16.060	253.190	2013.44	125.73	-125.73	-337.47	40°12'18.378"N	104°40'28.567"W	0.21	
2154.00	13.990	256.690	2105.19	132.17	-132.17	-361.23	40°12'18.314"N	104°40'28.874"W	2.38	
2249.00	13.030	255.770	2197.56	137.45	-137.45	-382.79	40°12'18.262"N	104°40'29.151"W	1.04	
2343.00	10.590	259.320	2289.57	141.65	-141.65	-401.55	40°12'18.220"N	104°40'29.393"W	2.71	
2438.00	9.400	256.040	2383.13	145.14	-145.14	-417.66	40°12'18.186"N	104°40'29.601"W	1.39	
2533.00	7.540	254.900	2477.09	148.64	-148.64	-431.20	40°12'18.151"N	104°40'29.775"W	1.97	
2628.00	6.220	263.640	2571.40	150.83	-150.83	-442.34	40°12'18.129"N	104°40'29.919"W	1.77	
2724.00	4.870	265.030	2666.95	151.76	-151.76	-451.57	40°12'18.120"N	104°40'30.038"W	1.41	
2819.00	3.620	259.240	2761.69	152.67	-152.67	-458.53	40°12'18.111"N	104°40'30.128"W	1.39	
2914.00	1.720	259.550	2856.58	153.49	-153.49	-462.88	40°12'18.103"N	104°40'30.184"W	2.00	
3010.00	0.080	299.820	2952.57	153.72	-153.72	-464.35	40°12'18.101"N	104°40'30.203"W	1.73	
3486.00	1.170	339.040	3428.53	149.01	-149.01	-466.38	40°12'18.147"N	104°40'30.229"W	0.23	
3581.00	0.450	230.660	3523.52	148.35	-148.35	-467.02	40°12'18.154"N	104°40'30.237"W	1.45	
4057.00	0.890	242.170	3999.49	151.26	-151.26	-471.73	40°12'18.125"N	104°40'30.298"W	0.10	
4248.00	0.460	225.880	4190.48	152.48	-152.48	-473.59	40°12'18.113"N	104°40'30.322"W	0.24	
4723.00	0.620	179.290	4665.46	156.38	-156.38	-474.93	40°12'18.075"N	104°40'30.339"W	0.10	

REFERENCE WELLPATH IDENTIFICATION			
Operator	KERR-MCGEE OIL & GAS ONSHORE LP (WA)	Slot	SLOT#45 SKIM 13N-28HZ (639'FSL & 1256'FWL, SEC.21)
Area	COLORADO	Well	SKIM 13N-28HZ
Field	WELD COUNTY (UTM/TRUE NORTH)	Wellbore	SKIM 13N-28HZ AWB <12494>
Facility	SEC.21-T3N-R65W		

WELLPATH DATA (118 stations) † = interpolated/extrapolated station										
MD [ft]	Inclination [°]	Azimuth [°]	TVD [ft]	Vert Sect [ft]	North [ft]	East [ft]	Latitude	Longitude	DLS [°/100ft]	Comments
5198.00	0.190	24.750	5140.45	158.23	-158.23	-474.57	40°12'18.056"N	104°40'30.334"W	0.17	
5673.00	0.700	340.050	5615.44	154.79	-154.79	-475.23	40°12'18.090"N	104°40'30.343"W	0.12	
5959.00	0.530	359.340	5901.42	151.83	-151.83	-475.84	40°12'18.120"N	104°40'30.351"W	0.09	
6149.00	0.320	98.630	6091.42	151.03	-151.03	-475.33	40°12'18.128"N	104°40'30.344"W	0.35	
6244.00	2.080	204.180	6186.40	152.64	-152.64	-475.77	40°12'18.112"N	104°40'30.350"W	2.30	
6340.00	1.080	201.650	6282.36	155.07	-155.07	-476.82	40°12'18.088"N	104°40'30.363"W	1.04	
6435.00	10.990	196.310	6376.71	164.62	-164.62	-479.70	40°12'17.993"N	104°40'30.400"W	10.44	
6530.00	20.680	190.160	6468.01	189.88	-189.88	-485.21	40°12'17.744"N	104°40'30.472"W	10.34	
6625.00	24.370	184.440	6555.75	225.95	-225.95	-489.69	40°12'17.387"N	104°40'30.529"W	4.51	
6721.00	31.150	178.260	6640.67	270.58	-270.58	-490.47	40°12'16.946"N	104°40'30.539"W	7.66	
6816.00	36.460	175.780	6719.59	323.33	-323.33	-487.65	40°12'16.425"N	104°40'30.503"W	5.77	
6911.00	41.380	177.720	6793.48	382.89	-382.89	-484.32	40°12'15.836"N	104°40'30.460"W	5.33	
7006.00	47.700	177.780	6861.16	449.44	-449.44	-481.70	40°12'15.179"N	104°40'30.426"W	6.65	
7015.00†	48.656	178.574	6867.16	456.14	-456.14	-481.49	40°12'15.112"N	104°40'30.424"W	12.50	SSPG
7101.00	58.020	185.170	6918.49	524.94	-524.94	-483.98	40°12'14.432"N	104°40'30.456"W	12.50	
7141.00†	60.092	183.995	6939.06	559.14	-559.14	-486.72	40°12'14.095"N	104°40'30.491"W	5.76	N470_B_CK
7197.00	63.010	182.430	6965.73	608.29	-608.29	-489.47	40°12'13.609"N	104°40'30.526"W	5.76	
7292.00	71.250	181.610	7002.62	695.69	-695.69	-492.53	40°12'12.745"N	104°40'30.566"W	8.71	
7387.00	82.890	180.710	7023.84	788.11	-788.11	-494.39	40°12'11.832"N	104°40'30.590"W	12.29	
7437.00†	85.348	180.055	7028.96	837.84	-837.84	-494.72	40°12'11.340"N	104°40'30.594"W	5.08	Top of Production
7482.00	87.560	179.470	7031.75	882.75	-882.75	-494.53	40°12'10.897"N	104°40'30.591"W	5.08	
7578.00	87.130	179.930	7036.20	978.64	-978.64	-494.03	40°12'09.949"N	104°40'30.585"W	0.66	
7673.00	88.580	179.060	7039.75	1073.57	-1073.57	-493.19	40°12'09.011"N	104°40'30.574"W	1.78	
7768.00	87.840	179.090	7042.72	1168.51	-1168.51	-491.66	40°12'08.073"N	104°40'30.554"W	0.78	
7863.00	88.710	178.730	7045.58	1263.45	-1263.45	-489.85	40°12'07.135"N	104°40'30.531"W	0.99	
7958.00	90.150	178.920	7046.52	1358.42	-1358.42	-487.91	40°12'06.196"N	104°40'30.506"W	1.53	
8054.00	89.750	178.250	7046.61	1454.39	-1454.39	-485.54	40°12'05.248"N	104°40'30.475"W	0.81	
8149.00	91.260	178.640	7045.77	1549.35	-1549.35	-482.96	40°12'04.309"N	104°40'30.442"W	1.64	
8244.00	90.920	178.920	7043.96	1644.31	-1644.31	-480.94	40°12'03.371"N	104°40'30.416"W	0.46	
8339.00	91.200	179.140	7042.20	1739.28	-1739.28	-479.33	40°12'02.432"N	104°40'30.395"W	0.37	
8434.00	89.940	179.890	7041.26	1834.27	-1834.27	-478.52	40°12'01.494"N	104°40'30.385"W	1.54	
8529.00	90.030	179.840	7041.28	1929.27	-1929.27	-478.30	40°12'00.555"N	104°40'30.382"W	0.11	
8625.00	88.770	179.690	7042.29	2025.26	-2025.26	-477.91	40°11'59.606"N	104°40'30.377"W	1.32	
8719.00	88.920	179.720	7044.18	2119.24	-2119.24	-477.42	40°11'58.678"N	104°40'30.371"W	0.16	
8815.00	88.580	179.730	7046.28	2215.22	-2215.22	-476.96	40°11'57.729"N	104°40'30.365"W	0.35	
8910.00	87.810	179.950	7049.27	2310.17	-2310.17	-476.70	40°11'56.791"N	104°40'30.361"W	0.84	
9005.00	87.720	179.290	7052.98	2405.09	-2405.09	-476.07	40°11'55.853"N	104°40'30.353"W	0.70	
9101.00	89.320	179.530	7055.46	2501.05	-2501.05	-475.08	40°11'54.905"N	104°40'30.340"W	1.69	
9197.00	88.680	178.650	7057.13	2597.03	-2597.03	-473.55	40°11'53.956"N	104°40'30.321"W	1.13	
9293.00	90.620	179.320	7057.72	2693.00	-2693.00	-471.85	40°11'53.008"N	104°40'30.299"W	2.14	
9388.00	90.150	179.240	7057.08	2787.99	-2787.99	-470.66	40°11'52.069"N	104°40'30.283"W	0.50	
9484.00	89.970	179.160	7056.98	2883.99	-2883.99	-469.32	40°11'51.120"N	104°40'30.266"W	0.21	
9579.00	90.890	179.460	7056.27	2978.97	-2978.97	-468.18	40°11'50.182"N	104°40'30.251"W	1.02	
9675.00	90.430	179.350	7055.16	3074.96	-3074.96	-467.18	40°11'49.233"N	104°40'30.238"W	0.49	
9770.00	90.240	180.060	7054.60	3169.96	-3169.96	-466.69	40°11'48.294"N	104°40'30.232"W	0.77	

## REFERENCE WELLPATH IDENTIFICATION

Operator	KERR-MCGEE OIL & GAS ONSHORE LP (WA)	Slot	SLOT#45 SKIM 13N-28HZ (639'FSL & 1256'FWL, SEC.21)
Area	COLORADO	Well	SKIM 13N-28HZ
Field	WELD COUNTY (UTM/TRUE NORTH)	Wellbore	SKIM 13N-28HZ AWB <12494>
Facility	SEC.21-T3N-R65W		

## WELLPATH DATA (118 stations)

MD [ft]	Inclination [°]	Azimuth [°]	TVD [ft]	Vert Sect [ft]	North [ft]	East [ft]	Latitude	Longitude	DLS [°/100ft]	Comments
9866.00	89.010	179.250	7055.23	3265.95	-3265.95	-466.11	40°11'47.346"N	104°40'30.225"W	1.53	
9961.00	89.130	180.640	7056.77	3360.94	-3360.94	-466.02	40°11'46.407"N	104°40'30.223"W	1.47	
10056.00	89.900	180.520	7057.58	3455.93	-3455.93	-466.98	40°11'45.469"N	104°40'30.236"W	0.82	
10152.00	89.500	180.780	7058.08	3551.92	-3551.92	-468.07	40°11'44.520"N	104°40'30.250"W	0.50	
10247.00	88.790	180.370	7059.50	3646.90	-3646.90	-469.02	40°11'43.581"N	104°40'30.262"W	0.86	
10342.00	89.590	180.710	7060.84	3741.89	-3741.89	-469.92	40°11'42.643"N	104°40'30.274"W	0.91	
10438.00	88.670	179.780	7062.30	3837.88	-3837.88	-470.33	40°11'41.694"N	104°40'30.279"W	1.36	
10533.00	90.000	179.700	7063.40	3932.87	-3932.87	-469.90	40°11'40.755"N	104°40'30.273"W	1.40	
10628.00	89.040	179.240	7064.20	4027.86	-4027.86	-469.02	40°11'39.817"N	104°40'30.262"W	1.12	
10723.00	89.350	180.640	7065.53	4122.85	-4122.85	-468.92	40°11'38.878"N	104°40'30.261"W	1.51	
10818.00	90.740	181.180	7065.46	4217.83	-4217.83	-470.43	40°11'37.939"N	104°40'30.280"W	1.57	
10913.00	90.150	181.900	7064.72	4312.79	-4312.79	-472.98	40°11'37.001"N	104°40'30.313"W	0.98	
11009.00	90.000	180.910	7064.59	4408.76	-4408.76	-475.34	40°11'36.053"N	104°40'30.343"W	1.04	
11104.00	90.060	182.010	7064.54	4503.73	-4503.73	-477.76	40°11'35.114"N	104°40'30.374"W	1.16	
11199.00	90.550	179.420	7064.04	4598.71	-4598.71	-478.94	40°11'34.176"N	104°40'30.390"W	2.77	
11295.00	90.490	179.480	7063.17	4694.70	-4694.70	-478.02	40°11'33.227"N	104°40'30.378"W	0.09	
11390.00	90.400	179.010	7062.43	4789.69	-4789.69	-476.77	40°11'32.288"N	104°40'30.362"W	0.50	
11485.00	89.970	178.510	7062.12	4884.67	-4884.67	-474.71	40°11'31.350"N	104°40'30.335"W	0.69	
11579.00	89.080	178.330	7062.90	4978.63	-4978.63	-472.12	40°11'30.421"N	104°40'30.302"W	0.97	
11674.00	88.580	180.020	7064.84	5073.60	-5073.60	-470.75	40°11'29.483"N	104°40'30.284"W	1.85	
11770.00	89.750	181.450	7066.24	5169.57	-5169.57	-471.99	40°11'28.534"N	104°40'30.300"W	1.92	
11865.00	89.480	181.200	7066.88	5264.55	-5264.55	-474.18	40°11'27.596"N	104°40'30.328"W	0.39	
11960.00	89.600	181.800	7067.64	5359.51	-5359.51	-476.67	40°11'26.657"N	104°40'30.360"W	0.64	
12151.00	90.150	183.080	7068.06	5550.33	-5550.33	-484.80	40°11'24.772"N	104°40'30.465"W	0.73	
12246.00	89.630	183.120	7068.24	5645.19	-5645.19	-489.94	40°11'23.834"N	104°40'30.531"W	0.55	
12342.00	89.780	183.290	7068.74	5741.04	-5741.04	-495.30	40°11'22.887"N	104°40'30.600"W	0.24	
12444.00	89.540	183.750	7069.34	5842.85	-5842.85	-501.57	40°11'21.881"N	104°40'30.681"W	0.51	Last BHI MWD+IFR Surveys
12494.00	89.540	183.750	7069.74	5892.74	-5892.74	-504.84	40°11'21.388"N	104°40'30.723"W	0.00	Projection to Bit

## HOLE & CASING SECTIONS - Ref Wellbore: SKIM 13N-28HZ AWB <12494> Ref Wellpath: SKIM 13N-28HZ AWP

String/Diameter	Start MD [ft]	End MD [ft]	Interval [ft]	Start TVD [ft]	End TVD [ft]	Start N/S [ft]	Start E/W [ft]	End N/S [ft]	End E/W [ft]
13.5in Open Hole	16.00	1241.00	1225.00	16.00	1228.01	0.00	0.00	-57.89	-119.99
9.625in Casing Surface	16.00	1231.00	1215.00	16.00	1218.38	0.00	0.00	-56.60	-117.62
7.875in Open Hole	1241.00	12494.00	11253.00	1228.01	7069.74	-57.89	-119.99	-5892.74	-504.84

REFERENCE WELLPATH IDENTIFICATION			
Operator	KERR-MCGEE OIL & GAS ONSHORE LP (WA)	Slot	SLOT#45 SKIM 13N-28HZ (639'FSL & 1256'FWL, SEC.21)
Area	COLORADO	Well	SKIM 13N-28HZ
Field	WELD COUNTY (UTM/TRUE NORTH)	Wellbore	SKIM 13N-28HZ AWB <12494>
Facility	SEC.21-T3N-R65W		

TARGETS								
Name	TVD [ft]	North [ft]	East [ft]	Grid East [US ft]	Grid North [US ft]	Latitude	Longitude	Shape
SEC.21-T3N-R65W LINES	18.00	-1064.74	2572.90	1734184.18	14600660.39	40°12'09.097"N	104°39'51.059"W	polygon
SEC.28-T3N-R65W LINES	18.00	-1064.74	2572.90	1734184.18	14600660.39	40°12'09.097"N	104°39'51.059"W	polygon
SKIM 13N-28HZ BHL ON PLAT (50'FSL & 792'FWL, SEC.28) REV-1	7068.00	-5883.06	-470.52	1731159.69	14595832.79	40°11'21.484"N	104°40'30.281"W	point
SKIM 13N-28HZ LANDBOX	7068.00	0.00	0.00	1731608.39	14601715.23	40°12'19.620"N	104°40'24.218"W	polygon

WELLPATH COMPOSITION - Ref Wellbore: SKIM 13N-28HZ AWB <12494>					Ref Wellpath: SKIM 13N-28HZ AWP	
Start MD [ft]	End MD [ft]	Positional Uncertainty Model	Log Name/Comment	Wellbore		
16.00	1198.00	Custom_APC_ISCWSA REV 2 MWD	CATHEDRAL ENERGY MWD SURVEYS <95-1198>	SKIM 13N-28HZ AWB <12494>		
1198.00	12444.00	Custom APC_ISCWSA REV 2 MWD+IFR1+SC (approximation)	BHI MWD+IFR SURVEYS 7 7/8" HOLE <1298-11104>	SKIM 13N-28HZ AWB <12494>		
12444.00	12494.00	Blind Drilling (std)	Projection to bit	SKIM 13N-28HZ AWB <12494>		

REFERENCE WELLPATH IDENTIFICATION			
Operator	KERR-MCGEE OIL & GAS ONSHORE LP (WA)	Slot	SLOT#45 SKIM 13N-28HZ (639'FSL & 1256'FWL, SEC.21)
Area	COLORADO	Well	SKIM 13N-28HZ
Field	WELD COUNTY (UTM/TRUE NORTH)	Wellbore	SKIM 13N-28HZ AWB <12494>
Facility	SEC.21-T3N-R65W		

WELLPATH COMMENTS				
MD [ft]	Inclination [°]	Azimuth [°]	TVD [ft]	Comment
16.00	0.000	79.300	16.00	Tie-On
95.00	0.300	79.300	95.00	Begin CATHEDRAL MWD Surveys
1198.00	15.600	240.800	1186.60	Tie-Into CATHEDRAL MWD Surveys
1298.00	15.670	242.100	1282.90	Begin BHI MWD+IFR Surveys
7015.00	48.656	178.574	6867.16	SSPG
7141.00	60.092	183.995	6939.06	N470_B_CK
7437.00	85.348	180.055	7028.96	Top of Production
12444.00	89.540	183.750	7069.34	Last BHI MWD+IFR Surveys
12494.00	89.540	183.750	7069.74	Projection to Bit