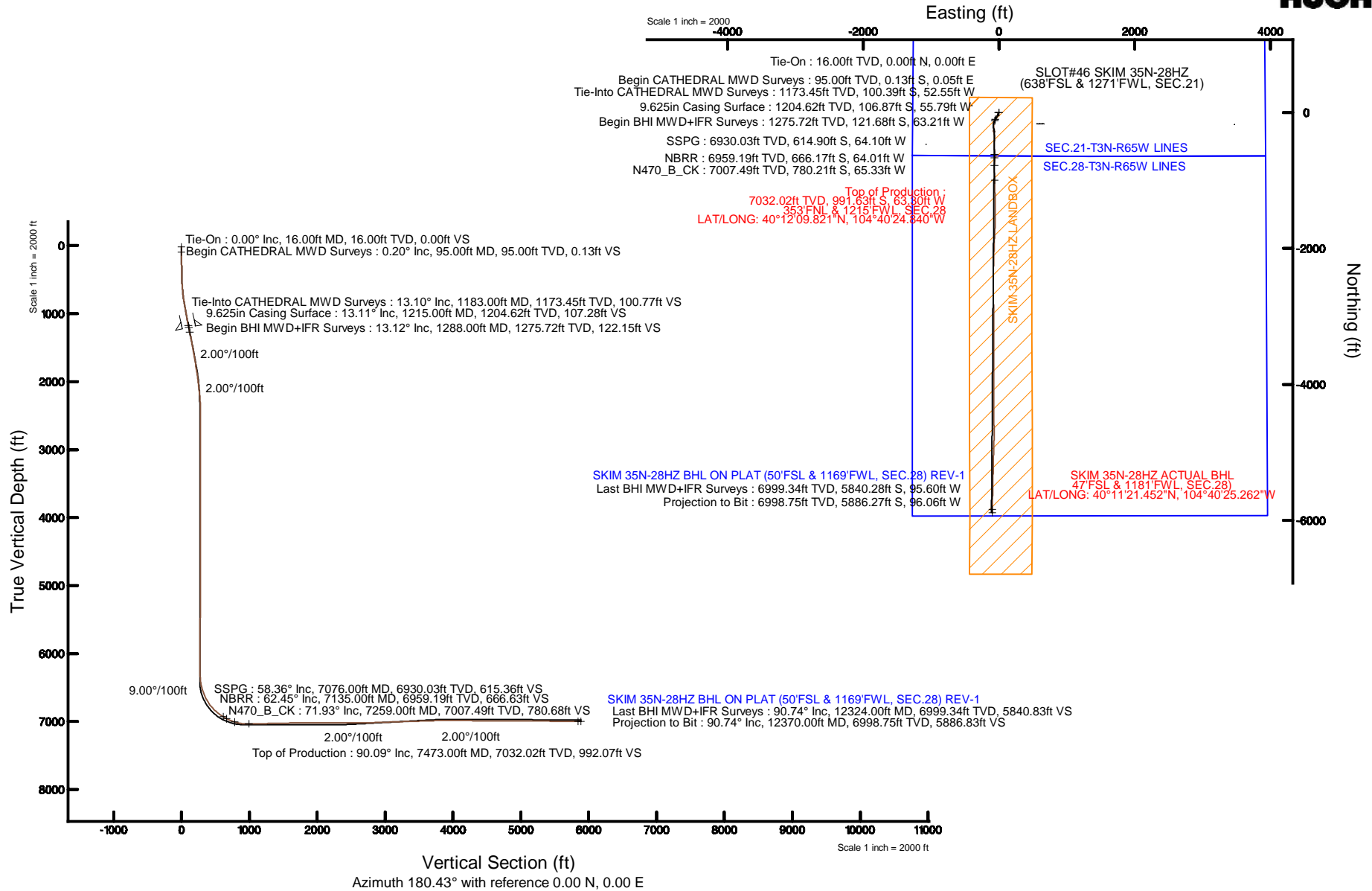


# KERR-MCGEE OIL & GAS ONSHORE LP (WA)

Location: COLORADO Slot: SLOT#46 SKIM 35N-28HZ (638'FSL & 1271'FWL, SEC.21)  
 Field: WELD COUNTY (UTM/TRUE NORTH) Well: SKIM 35N-28HZ  
 Facility: SEC.21-T3N-R65W Wellbore: SKIM 35N-28HZ PWP

Plot reference wellpath is SKIM 35N-28HZ (REV-B.0) PWP	
True vertical depths are referenced to XTREME 23 916'KB) (RKB)	Grid System: NAD83 / UTM Zone 13 North, US feet
Measured depths are referenced to XTREME 23 916'KB) (RKB)	North Reference: True north
XTREME 23 916'KB) (RKB) to Mean Sea Level: 4862 feet	Scale: True distance
Mean Sea Level to Mud line (At Slot: SLOT#46 SKIM 35N-28HZ (638'FSL & 1271'FWL, SEC.21): 0 feet	Depths are in feet
Coordinates are in feet referenced to Slot	Created by: precain on 6/10/2015



## REFERENCE WELLPATH IDENTIFICATION

Operator	KERR-MCGEE OIL & GAS ONSHORE LP (WA)	Slot	SLOT#46 SKIM 35N-28HZ (638'FSL & 1271'FWL, SEC.21)
Area	COLORADO	Well	SKIM 35N-28HZ
Field	WELD COUNTY (UTM/TRUE NORTH)	Wellbore	SKIM 35N-28HZ AWB <12370>
Facility	SEC.21-T3N-R65W		

## REPORT SETUP INFORMATION

Projection System	NAD83 / UTM Zone 13 North, US feet	Software System	WellArchitect® 4.1.1
North Reference	True	User	Precain
Scale	0.99961	Report Generated	6/10/2015 at 12:34:08 PM
Convergence at slot	0.21° East	Database/Source file	WellArchitectAPC/SKIM_35N-28HZ_AWB__12370_.xml

## WELLPATH LOCATION

	Local coordinates		Grid coordinates		Geographic coordinates	
	North[ft]	East[ft]	Easting[US ft]	Northing[US ft]	Latitude	Longitude
Slot Location	-3679.31	-2382.62	1731623.44	14601715.29	40°12'19.620"N	104°40'24.024"W
Facility Reference Pt			1733991.21	14605402.13	40°12'55.980"N	104°39'53.316"W
Field Reference Pt			1698235.31	14552047.82	40°04'09.600"N	104°47'36.000"W

## WELLPATH DATUM

Calculation method	Minimum curvature	XTREME 23 916'KB) (RKB) to Facility Vertical Datum	4862.00ft
Horizontal Reference Pt	Slot	XTREME 23 916'KB) (RKB) to Mean Sea Level	4862.00ft
Vertical Reference Pt	XTREME 23 916'KB) (RKB)	XTREME 23 916'KB) (RKB) to Mud Line at Slot (SLOT#46 SKIM 35N-28HZ (638'FSL & 1271'FWL, SEC.21))	4862.00ft
MD Reference Pt	XTREME 23 916'KB) (RKB)	Section Origin	N 0.00, E 0.00 ft
Field Vertical Reference	Mean Sea Level	Section Azimuth	180.43°

REFERENCE WELLPATH IDENTIFICATION			
Operator	KERR-MCGEE OIL & GAS ONSHORE LP (WA)	Slot	SLOT#46 SKIM 35N-28HZ (638'FSL & 1271'FWL, SEC.21)
Area	COLORADO	Well	SKIM 35N-28HZ
Field	WELD COUNTY (UTM/TRUE NORTH)	Wellbore	SKIM 35N-28HZ AWB <12370>
Facility	SEC.21-T3N-R65W		

WELLPATH DATA (110 stations) † = interpolated/extrapolated station										
MD [ft]	Inclination [°]	Azimuth [°]	TVD [ft]	Vert Sect [ft]	North [ft]	East [ft]	Latitude	Longitude	DLS [°/100ft]	Comments
0.00†	0.000	158.500	0.00	0.00	0.00	0.00	40°12'19.620"N	104°40'24.024"W	0.00	
16.00	0.000	158.500	16.00	0.00	0.00	0.00	40°12'19.620"N	104°40'24.024"W	0.00	Tie-On
95.00	0.200	158.500	95.00	0.13	-0.13	0.05	40°12'19.619"N	104°40'24.023"W	0.25	Begin CATHEDRAL MWD Surveys
152.00	0.600	210.300	152.00	0.48	-0.48	-0.06	40°12'19.615"N	104°40'24.025"W	0.88	
213.00	0.600	198.600	213.00	1.06	-1.06	-0.33	40°12'19.610"N	104°40'24.028"W	0.20	
271.00	0.800	217.200	270.99	1.67	-1.67	-0.67	40°12'19.604"N	104°40'24.033"W	0.52	
329.00	1.300	212.900	328.98	2.55	-2.54	-1.27	40°12'19.595"N	104°40'24.040"W	0.87	
387.00	1.200	233.500	386.97	3.47	-3.46	-2.12	40°12'19.586"N	104°40'24.051"W	0.79	
445.00	1.900	226.200	444.95	4.51	-4.48	-3.30	40°12'19.576"N	104°40'24.067"W	1.25	
510.00	2.700	210.800	509.89	6.58	-6.54	-4.86	40°12'19.555"N	104°40'24.087"W	1.54	
573.00	4.100	209.300	572.78	9.83	-9.78	-6.72	40°12'19.523"N	104°40'24.111"W	2.23	
638.00	5.500	203.900	637.55	14.72	-14.66	-9.12	40°12'19.475"N	104°40'24.142"W	2.26	
701.00	6.600	200.800	700.20	20.89	-20.80	-11.63	40°12'19.414"N	104°40'24.174"W	1.82	
765.00	7.700	199.800	763.70	28.38	-28.27	-14.39	40°12'19.341"N	104°40'24.209"W	1.73	
829.00	9.100	200.800	827.01	37.17	-37.04	-17.64	40°12'19.254"N	104°40'24.251"W	2.20	
894.00	10.600	204.900	891.05	47.43	-47.27	-21.98	40°12'19.153"N	104°40'24.307"W	2.55	
957.00	11.700	210.300	952.87	58.24	-58.04	-27.64	40°12'19.046"N	104°40'24.380"W	2.41	
1020.00	12.400	212.600	1014.48	69.51	-69.25	-34.51	40°12'18.936"N	104°40'24.469"W	1.35	
1084.00	12.700	211.300	1076.95	81.36	-81.05	-41.87	40°12'18.819"N	104°40'24.564"W	0.64	
1183.00	13.100	206.600	1173.45	100.77	-100.39	-52.55	40°12'18.628"N	104°40'24.701"W	1.13	Tie-Into CATHEDRAL MWD Surveys
1288.00	13.120	206.600	1275.72	122.15	-121.68	-63.21	40°12'18.418"N	104°40'24.839"W	0.02	Begin BHI MWD+IFR Surveys
1384.00	11.780	199.830	1369.46	141.17	-140.64	-71.41	40°12'18.230"N	104°40'24.944"W	2.06	
1479.00	10.600	191.310	1462.66	158.90	-158.34	-76.42	40°12'18.055"N	104°40'25.009"W	2.14	
1574.00	9.840	178.330	1556.16	175.60	-175.02	-77.89	40°12'17.890"N	104°40'25.028"W	2.55	
1669.00	9.660	178.710	1649.79	191.68	-191.10	-77.48	40°12'17.732"N	104°40'25.023"W	0.20	
1764.00	9.100	176.340	1743.52	207.14	-206.57	-76.82	40°12'17.579"N	104°40'25.014"W	0.72	
1859.00	8.810	173.020	1837.36	221.84	-221.29	-75.46	40°12'17.433"N	104°40'24.996"W	0.62	
1954.00	8.710	172.930	1931.26	236.19	-235.65	-73.69	40°12'17.291"N	104°40'24.974"W	0.11	
2049.00	6.830	171.040	2025.38	248.90	-248.37	-71.92	40°12'17.166"N	104°40'24.951"W	2.00	
2144.00	6.710	172.360	2119.72	259.96	-259.45	-70.30	40°12'17.056"N	104°40'24.930"W	0.21	
2239.00	4.850	173.280	2214.23	269.44	-268.94	-69.10	40°12'16.962"N	104°40'24.915"W	1.96	
2334.00	3.280	152.290	2308.99	275.83	-275.33	-67.36	40°12'16.899"N	104°40'24.892"W	2.25	
2428.00	1.220	147.410	2402.92	279.04	-278.56	-65.57	40°12'16.867"N	104°40'24.869"W	2.20	
2523.00	0.320	333.940	2497.91	279.65	-279.17	-65.14	40°12'16.861"N	104°40'24.864"W	1.62	
3000.00	0.340	211.380	2974.91	279.67	-279.18	-66.47	40°12'16.861"N	104°40'24.881"W	0.12	
3476.00	0.880	324.140	3450.89	277.93	-277.43	-69.34	40°12'16.878"N	104°40'24.918"W	0.22	
3762.00	0.230	263.920	3736.87	276.23	-275.71	-71.20	40°12'16.895"N	104°40'24.942"W	0.28	
4238.00	0.570	178.090	4212.87	278.70	-278.17	-72.07	40°12'16.871"N	104°40'24.953"W	0.13	
4714.00	0.260	50.320	4688.86	280.37	-279.85	-71.16	40°12'16.855"N	104°40'24.941"W	0.16	
5188.00	0.520	311.200	5162.85	278.28	-277.75	-71.95	40°12'16.875"N	104°40'24.951"W	0.13	
5664.00	0.920	337.080	5638.81	273.36	-272.80	-75.07	40°12'16.924"N	104°40'24.991"W	0.11	
5854.00	1.020	255.430	5828.79	272.39	-271.82	-77.30	40°12'16.934"N	104°40'25.020"W	0.67	
5949.00	1.300	310.940	5923.78	271.91	-271.33	-78.93	40°12'16.939"N	104°40'25.041"W	1.17	
6044.00	0.810	340.720	6018.76	270.58	-269.99	-79.96	40°12'16.952"N	104°40'25.055"W	0.76	
6139.00	0.880	157.400	6113.76	270.62	-270.03	-79.91	40°12'16.952"N	104°40'25.054"W	1.78	

REFERENCE WELLPATH IDENTIFICATION			
Operator	KERR-MCGEE OIL & GAS ONSHORE LP (WA)	Slot	SLOT#46 SKIM 35N-28HZ (638'FSL & 1271'FWL, SEC.21)
Area	COLORADO	Well	SKIM 35N-28HZ
Field	WELD COUNTY (UTM/TRUE NORTH)	Wellbore	SKIM 35N-28HZ AWP <12370>
Facility	SEC.21-T3N-R65W		

WELLPATH DATA (110 stations) † = interpolated/extrapolated station										
MD [ft]	Inclination [°]	Azimuth [°]	TVD [ft]	Vert Sect [ft]	North [ft]	East [ft]	Latitude	Longitude	DLS [°/100ft]	Comments
6235.00	1.340	151.360	6209.74	272.28	-271.70	-79.08	40°12'16.935"N	104°40'25.043"W	0.49	
6330.00	1.490	123.140	6304.71	273.92	-273.35	-77.52	40°12'16.919"N	104°40'25.023"W	0.74	
6425.00	6.730	164.940	6399.45	279.95	-279.40	-75.04	40°12'16.859"N	104°40'24.991"W	6.01	
6521.00	14.920	169.020	6493.66	297.52	-297.00	-71.21	40°12'16.685"N	104°40'24.942"W	8.56	
6616.00	20.900	170.690	6584.01	326.24	-325.75	-66.14	40°12'16.401"N	104°40'24.876"W	6.32	
6711.00	28.190	180.480	6670.41	365.44	-364.98	-63.58	40°12'16.013"N	104°40'24.843"W	8.76	
6806.00	35.830	182.680	6750.91	415.74	-415.27	-65.07	40°12'15.516"N	104°40'24.863"W	8.13	
6901.00	45.270	179.840	6823.02	477.42	-476.94	-66.28	40°12'14.907"N	104°40'24.878"W	10.12	
6997.00	53.230	178.530	6885.63	550.06	-549.59	-65.20	40°12'14.189"N	104°40'24.864"W	8.36	
7076.00†	58.360	179.523	6930.03	615.36	-614.90	-64.10	40°12'13.544"N	104°40'24.850"W	6.58	SSPG
7092.00	59.400	179.710	6938.30	629.05	-628.59	-64.01	40°12'13.408"N	104°40'24.849"W	6.58	
7135.00†	62.449	180.290	6959.19	666.63	-666.17	-64.01	40°12'13.037"N	104°40'24.849"W	7.19	NBRR
7187.00	66.140	180.950	6981.74	713.47	-713.01	-64.53	40°12'12.574"N	104°40'24.856"W	7.19	
7259.00†	71.930	180.436	7007.49	780.68	-780.21	-65.33	40°12'11.910"N	104°40'24.866"W	8.07	N470_B_CK
7282.00	73.780	180.280	7014.27	802.65	-802.19	-65.47	40°12'11.693"N	104°40'24.868"W	8.07	
7377.00	87.310	179.220	7029.84	896.14	-895.68	-65.04	40°12'10.769"N	104°40'24.862"W	14.28	
7473.00	90.090	178.700	7032.02	992.07	-991.63	-63.30	40°12'09.821"N	104°40'24.840"W	2.95	Top of Production
7568.00	90.400	178.360	7031.61	1087.02	-1086.59	-60.87	40°12'08.882"N	104°40'24.808"W	0.48	
7664.00	90.620	178.240	7030.76	1182.95	-1182.55	-58.02	40°12'07.934"N	104°40'24.772"W	0.26	
7759.00	91.110	177.930	7029.33	1277.86	-1277.48	-54.84	40°12'06.996"N	104°40'24.731"W	0.61	
7854.00	91.200	179.350	7027.41	1372.79	-1372.44	-52.59	40°12'06.058"N	104°40'24.702"W	1.50	
7949.00	91.790	180.540	7024.93	1467.75	-1467.40	-52.50	40°12'05.119"N	104°40'24.701"W	1.40	
8044.00	90.830	181.520	7022.76	1562.72	-1562.36	-54.21	40°12'04.181"N	104°40'24.723"W	1.44	
8139.00	91.970	181.590	7020.44	1657.67	-1657.29	-56.78	40°12'03.243"N	104°40'24.756"W	1.20	
8234.00	90.620	183.090	7018.29	1752.59	-1752.19	-60.66	40°12'02.305"N	104°40'24.806"W	2.12	
8329.00	89.420	182.220	7018.26	1847.51	-1847.08	-65.06	40°12'01.367"N	104°40'24.862"W	1.56	
8424.00	90.830	182.210	7018.05	1942.47	-1942.01	-68.73	40°12'00.429"N	104°40'24.910"W	1.48	
8519.00	88.520	181.760	7018.59	2037.42	-2036.94	-72.02	40°11'59.491"N	104°40'24.952"W	2.48	
8615.00	90.150	181.850	7019.70	2133.38	-2132.88	-75.05	40°11'58.543"N	104°40'24.991"W	1.70	
8710.00	89.720	181.960	7019.81	2228.35	-2227.83	-78.20	40°11'57.605"N	104°40'25.032"W	0.47	
8805.00	89.110	181.250	7020.78	2323.33	-2322.79	-80.87	40°11'56.666"N	104°40'25.066"W	0.99	
8900.00	90.000	181.370	7021.52	2418.31	-2417.76	-83.04	40°11'55.728"N	104°40'25.094"W	0.95	
9091.00	90.330	179.030	7020.97	2609.30	-2608.74	-83.70	40°11'53.840"N	104°40'25.103"W	1.24	
9188.00	91.320	179.030	7019.57	2706.26	-2705.72	-82.06	40°11'52.882"N	104°40'25.082"W	1.02	
9283.00	92.000	178.500	7016.82	2801.17	-2800.66	-80.02	40°11'51.944"N	104°40'25.055"W	0.91	
9378.00	91.290	178.010	7014.09	2896.07	-2895.57	-77.12	40°11'51.006"N	104°40'25.018"W	0.91	
9474.00	92.490	178.960	7010.93	2991.96	-2991.48	-74.59	40°11'50.058"N	104°40'24.985"W	1.59	
9570.00	91.380	179.820	7007.69	3087.88	-3087.42	-73.57	40°11'49.110"N	104°40'24.972"W	1.46	
9665.00	92.120	179.860	7004.79	3182.83	-3182.38	-73.30	40°11'48.172"N	104°40'24.969"W	0.78	
9761.00	92.090	181.330	7001.26	3278.77	-3278.30	-74.30	40°11'47.224"N	104°40'24.981"W	1.53	
9856.00	91.290	179.730	6998.46	3373.72	-3373.25	-75.17	40°11'46.286"N	104°40'24.993"W	1.88	
9951.00	92.090	178.760	6995.66	3468.66	-3468.20	-73.92	40°11'45.347"N	104°40'24.977"W	1.32	
10047.00	90.980	180.020	6993.08	3564.60	-3564.16	-72.90	40°11'44.399"N	104°40'24.963"W	1.75	
10142.00	92.460	180.180	6990.23	3659.56	-3659.11	-73.07	40°11'43.461"N	104°40'24.966"W	1.57	
10237.00	92.060	180.650	6986.49	3754.48	-3754.04	-73.76	40°11'42.523"N	104°40'24.974"W	0.65	

REFERENCE WELLPATH IDENTIFICATION			
Operator	KERR-MCGEE OIL & GAS ONSHORE LP (WA)	Slot	SLOT#46 SKIM 35N-28HZ (638'FSL & 1271'FWL, SEC.21)
Area	COLORADO	Well	SKIM 35N-28HZ
Field	WELD COUNTY (UTM/TRUE NORTH)	Wellbore	SKIM 35N-28HZ AWB <12370>
Facility	SEC.21-T3N-R65W		

WELLPATH DATA (110 stations)										
MD [ft]	Inclination [°]	Azimuth [°]	TVD [ft]	Vert Sect [ft]	North [ft]	East [ft]	Latitude	Longitude	DLS [°/100ft]	Comments
10333.00	90.770	180.220	6984.12	3850.45	-3850.00	-74.48	40°11'41.574"N	104°40'24.984"W	1.42	
10428.00	91.630	179.920	6982.13	3945.43	-3944.98	-74.60	40°11'40.636"N	104°40'24.985"W	0.96	
10523.00	88.730	180.430	6981.83	4040.41	-4039.97	-74.89	40°11'39.697"N	104°40'24.989"W	3.10	
10618.00	88.520	180.690	6984.11	4135.39	-4134.94	-75.82	40°11'38.759"N	104°40'25.001"W	0.35	
10714.00	88.610	180.080	6986.51	4231.36	-4230.90	-76.46	40°11'37.810"N	104°40'25.009"W	0.64	
10809.00	88.950	179.920	6988.53	4326.33	-4325.88	-76.46	40°11'36.872"N	104°40'25.009"W	0.40	
10904.00	89.350	179.750	6989.94	4421.32	-4420.87	-76.19	40°11'35.933"N	104°40'25.006"W	0.46	
11094.00	90.400	177.670	6990.36	4611.22	-4610.81	-71.91	40°11'34.056"N	104°40'24.951"W	1.23	
11190.00	90.550	179.770	6989.56	4707.17	-4706.78	-69.77	40°11'33.108"N	104°40'24.923"W	2.19	
11285.00	90.740	182.030	6988.49	4802.15	-4801.75	-71.26	40°11'32.169"N	104°40'24.942"W	2.39	
11380.00	88.980	182.080	6988.72	4897.11	-4896.69	-74.67	40°11'31.231"N	104°40'24.986"W	1.85	
11475.00	89.660	181.790	6989.85	4992.07	-4991.63	-77.87	40°11'30.293"N	104°40'25.027"W	0.78	
11570.00	90.520	181.550	6989.70	5087.04	-5086.59	-80.64	40°11'29.354"N	104°40'25.063"W	0.94	
11665.00	89.850	181.150	6989.40	5182.03	-5181.56	-82.88	40°11'28.416"N	104°40'25.092"W	0.82	
11760.00	89.450	181.280	6989.98	5277.02	-5276.53	-84.90	40°11'27.477"N	104°40'25.118"W	0.44	
11856.00	87.660	181.720	6992.40	5372.97	-5372.47	-87.41	40°11'26.529"N	104°40'25.150"W	1.92	
11951.00	88.270	181.420	6995.77	5467.89	-5467.37	-90.01	40°11'25.592"N	104°40'25.184"W	0.72	
12141.00	89.420	180.710	6999.60	5657.83	-5657.29	-93.54	40°11'23.715"N	104°40'25.229"W	0.71	
12324.00	90.740	180.580	6999.34	5840.83	-5840.28	-95.60	40°11'21.906"N	104°40'25.256"W	0.72	Last BHI MWD+IFR Surveys
12370.00	90.740	180.580	6998.75	5886.83	-5886.27	-96.06	40°11'21.452"N	104°40'25.262"W	0.00	Projection to Bit

HOLE & CASING SECTIONS - Ref Wellbore: SKIM 35N-28HZ AWB <12370> Ref Wellpath: SKIM 35N-28HZ AWP										
String/Diameter	Start MD [ft]	End MD [ft]	Interval [ft]	Start TVD [ft]	End TVD [ft]	Start N/S [ft]	Start E/W [ft]	End N/S [ft]	End E/W [ft]	
13.5in Open Hole	16.00	1226.00	1210.00	16.00	1215.33	0.00	0.00	-109.10	-56.91	
9.625in Casing Surface	16.00	1215.00	1199.00	16.00	1204.62	0.00	0.00	-106.87	-55.79	
8.5in Open Hole	1226.00	12370.00	11144.00	1215.33	6998.75	-109.10	-56.91	-5886.27	-96.06	

REFERENCE WELLPATH IDENTIFICATION			
Operator	KERR-MCGEE OIL & GAS ONSHORE LP (WA)	Slot	SLOT#46 SKIM 35N-28HZ (638'FSL & 1271'FWL, SEC.21)
Area	COLORADO	Well	SKIM 35N-28HZ
Field	WELD COUNTY (UTM/TRUE NORTH)	Wellbore	SKIM 35N-28HZ AWB <12370>
Facility	SEC.21-T3N-R65W		

TARGETS									
Name	TVD [ft]	North [ft]	East [ft]	Grid East [US ft]	Grid North [US ft]	Latitude	Longitude	Shape	
SEC.21-T3N-R65W LINES	18.00	-1064.74	2557.85	1734184.18	14600660.39	40°12'09.097"N	104°39'51.059"W	polygon	
SEC.28-T3N-R65W LINES	18.00	-1064.74	2557.85	1734184.18	14600660.39	40°12'09.097"N	104°39'51.059"W	polygon	
LANDBOX ARC	6975.00	-638.63	25.38	1731651.15	14601077.01	40°12'13.309"N	104°40'23.697"W	circle	
SKIM 35N-28HZ BHL ON PLAT (50'FSL & 1169'FWL, SEC.28) REV-1	6975.00	-5882.70	-108.69	1731536.43	14595834.53	40°11'21.487"N	104°40'25.424"W	point	
SKIM 35N-28HZ LANDBOX	6975.00	0.00	0.00	1731623.43	14601715.29	40°12'19.620"N	104°40'24.024"W	polygon	
8°/100' DLS POSSIBLE LANDING POINT	7045.00	-994.00	-72.29	1731554.83	14600721.42	40°12'09.797"N	104°40'24.956"W	point	

WELLPATH COMPOSITION - Ref Wellbore: SKIM 35N-28HZ AWB <12370>						Ref Wellpath: SKIM 35N-28HZ AWP	
Start MD [ft]	End MD [ft]	Positional Uncertainty Model	Log Name/Comment			Wellbore	
16.00	1183.00	Custom_APC_ISCWSA REV 2 MWD	CATHEDRAL ENERGY MWD SURVEYS <95-1183>			SKIM 35N-28HZ AWB <12370>	
1183.00	12324.00	Custom APC_ISCWSA REV 2 MWD+IFR1+SC (approximation)	BHI MWD+IFR SURVEYS 8 1/2" HOLE <1288-12324>			SKIM 35N-28HZ AWB <12370>	
12324.00	12370.00	Blind Drilling (std)	Projection to bit			SKIM 35N-28HZ AWB <12370>	

REFERENCE WELLPATH IDENTIFICATION			
Operator	KERR-MCGEE OIL & GAS ONSHORE LP (WA)	Slot	SLOT#46 SKIM 35N-28HZ (638'FSL & 1271'FWL, SEC.21)
Area	COLORADO	Well	SKIM 35N-28HZ
Field	WELD COUNTY (UTM/TRUE NORTH)	Wellbore	SKIM 35N-28HZ AWB <12370>
Facility	SEC.21-T3N-R65W		

WELLPATH COMMENTS				
MD [ft]	Inclination [°]	Azimuth [°]	TVD [ft]	Comment
16.00	0.000	158.500	16.00	Tie-On
95.00	0.200	158.500	95.00	Begin CATHEDRAL MWD Surveys
1183.00	13.100	206.600	1173.45	Tie-Into CATHEDRAL MWD Surveys
1288.00	13.120	206.600	1275.72	Begin BHI MWD+IFR Surveys
7076.00	58.360	179.523	6930.03	SSPG
7135.00	62.449	180.290	6959.19	NBRR
7259.00	71.930	180.436	7007.49	N470_B_CK
7473.00	90.090	178.700	7032.02	Top of Production
12324.00	90.740	180.580	6999.34	Last BHI MWD+IFR Surveys
12370.00	90.740	180.580	6998.75	Projection to Bit