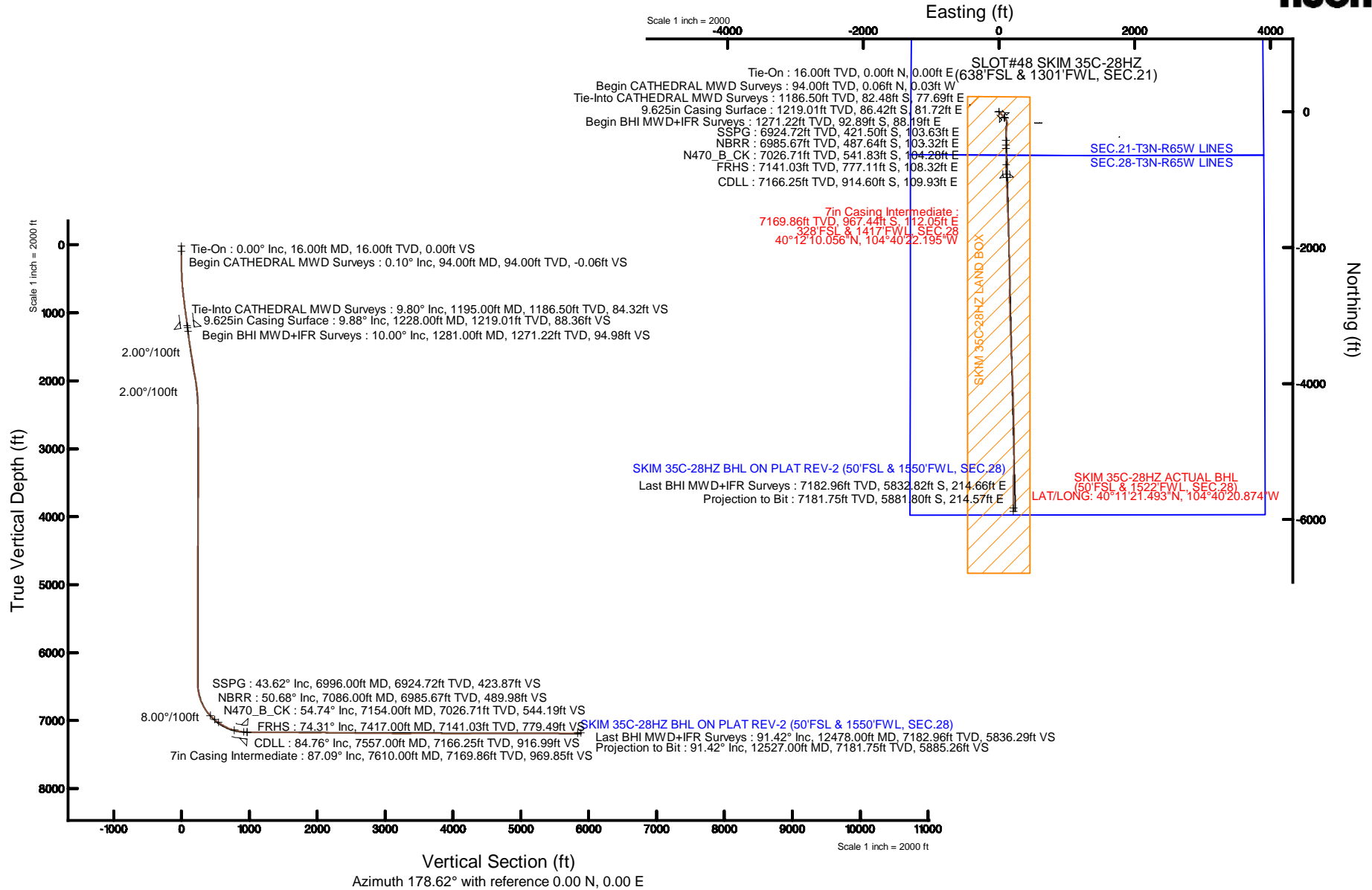


KERR-MCGEE OIL & GAS ONSHORE LP (WA)

Location: COLORADO Slot: SLOT#48 SKIM 35C-28HZ (638°FSL & 1301°FWL, SEC.21)
 Field: WELD COUNTY (UTM/TRUE NORTH) Well: SKIM 35C-28HZ
 Facility: SEC.21-T3N-R65W Wellbore: SKIM 35C-28HZ PWB

Plot reference wellpath is SKIM 35C-28HZ (REV-C.0) PWP	
True vertical depths are referenced to XTREME 23 (16'KB) (RKB)	Grid System: NAD83 / UTM Zone 13 North, US feet
Measured depths are referenced to XTREME 23 (16'KB) (RKB)	North Reference: True north
XTREME 23 (16'KB) (RKB) to Mean Sea Level: 4862 feet	Scale: True distance
Mean Sea Level to Mud line (At Slot: SLOT#48 SKIM 35C-28HZ (638°FSL & 1301°FWL, SEC.21)): 0 feet	Depths are in feet
Coordinates are in feet referenced to Slot	Created by: precain on 6/10/2015



REFERENCE WELLPATH IDENTIFICATION			
Operator	KERR-MCGEE OIL & GAS ONSHORE LP (WA)	Slot	SLOT#48 SKIM 35C-28HZ (638'FSL & 1301'FWL, SEC.21)
Area	COLORADO	Well	SKIM 35C-28HZ
Field	WELD COUNTY (UTM/TRUE NORTH)	Wellbore	SKIM 35C-28HZ AWB <12527>
Facility	SEC.21-T3N-R65W		

REPORT SETUP INFORMATION			
Projection System	NAD83 / UTM Zone 13 North, US feet	Software System	WellArchitect® 4.1.1
North Reference	True	User	Precairn
Scale	0.99961	Report Generated	6/10/2015 at 11:05:55 AM
Convergence at slot	0.21° East	Database/Source file	WellArchitectAPC/SKIM_35C-28HZ_AWB__12527_.xml

WELLPATH LOCATION						
	Local coordinates		Grid coordinates		Geographic coordinates	
	North[ft]	East[ft]	Easting[US ft]	Northing[US ft]	Latitude	Longitude
Slot Location	-3679.68	-2352.73	1731653.31	14601715.04	40°12'19.616"N	104°40'23.639"W
Facility Reference Pt			1733991.21	14605402.13	40°12'55.980"N	104°39'53.316"W
Field Reference Pt			1698235.31	14552047.82	40°04'09.600"N	104°47'36.000"W

WELLPATH DATUM			
Calculation method	Minimum curvature	XTREME 23 (16'KB) (RKB) to Facility Vertical Datum	4862.00ft
Horizontal Reference Pt	Slot	XTREME 23 (16'KB) (RKB) to Mean Sea Level	4862.00ft
Vertical Reference Pt	XTREME 23 (16'KB) (RKB)	XTREME 23 (16'KB) (RKB) to Mud Line at Slot (SLOT#48 SKIM 35C-28HZ (638'FSL & 1301'FWL, SEC.21))	4862.00ft
MD Reference Pt	XTREME 23 (16'KB) (RKB)	Section Origin	N 0.00, E 0.00 ft
Field Vertical Reference	Mean Sea Level	Section Azimuth	178.62°

REFERENCE WELLPATH IDENTIFICATION			
Operator	KERR-MCGEE OIL & GAS ONSHORE LP (WA)	Slot	SLOT#48 SKIM 35C-28HZ (638'FSL & 1301'FWL, SEC.21)
Area	COLORADO	Well	SKIM 35C-28HZ
Field	WELD COUNTY (UTM/TRUE NORTH)	Wellbore	SKIM 35C-28HZ AWB <12527>
Facility	SEC.21-T3N-R65W		

WELLPATH DATA (125 stations) † = interpolated/extrapolated station											
MD [ft]	Inclination [°]	Azimuth [°]	TVD [ft]	Vert Sect [ft]	North [ft]	East [ft]	Latitude	Longitude	DLS [°/100ft]	Comments	
0.00†	0.000	331.500	0.00	0.00	0.00	0.00	40°12'19.616"N	104°40'23.639"W	0.00		
16.00	0.000	331.500	16.00	0.00	0.00	0.00	40°12'19.616"N	104°40'23.639"W	0.00		Tie-On
94.00	0.100	331.500	94.00	-0.06	0.06	-0.03	40°12'19.617"N	104°40'23.639"W	0.13		Begin CATHEDRAL MWD Surveys
151.00	0.100	342.500	151.00	-0.15	0.15	-0.07	40°12'19.618"N	104°40'23.640"W	0.03		
212.00	0.400	7.000	212.00	-0.41	0.41	-0.06	40°12'19.620"N	104°40'23.640"W	0.51		
270.00	0.300	138.600	270.00	-0.50	0.50	0.06	40°12'19.621"N	104°40'23.638"W	1.10		
328.00	1.300	131.300	327.99	0.06	-0.05	0.66	40°12'19.616"N	104°40'23.630"W	1.73		
386.00	2.600	135.200	385.96	1.47	-1.42	2.08	40°12'19.602"N	104°40'23.612"W	2.25		
445.00	3.600	139.800	444.87	3.88	-3.78	4.22	40°12'19.579"N	104°40'23.584"W	1.75		
509.00	4.000	133.100	508.73	7.01	-6.84	7.15	40°12'19.549"N	104°40'23.547"W	0.93		
573.00	5.100	139.900	572.53	10.79	-10.54	10.61	40°12'19.512"N	104°40'23.502"W	1.91		
637.00	6.600	140.500	636.19	15.91	-15.56	14.78	40°12'19.463"N	104°40'23.448"W	2.35		
701.00	8.100	140.900	699.67	22.37	-21.89	19.96	40°12'19.400"N	104°40'23.382"W	2.35		
764.00	9.200	136.200	761.95	29.60	-28.97	26.25	40°12'19.330"N	104°40'23.301"W	2.07		
828.00	9.300	135.500	825.12	37.15	-36.35	33.41	40°12'19.257"N	104°40'23.208"W	0.24		
893.00	10.000	136.200	889.20	45.15	-44.17	41.00	40°12'19.180"N	104°40'23.110"W	1.09		
956.00	10.400	135.800	951.20	53.36	-52.20	48.75	40°12'19.101"N	104°40'23.010"W	0.64		
1019.00	10.400	139.100	1013.17	61.91	-60.57	56.44	40°12'19.018"N	104°40'22.911"W	0.95		
1083.00	10.200	136.000	1076.13	70.54	-69.02	64.16	40°12'18.934"N	104°40'22.812"W	0.92		
1146.00	9.600	134.500	1138.20	78.42	-76.71	71.78	40°12'18.858"N	104°40'22.714"W	1.04		
1195.00	9.800	134.100	1186.50	84.32	-82.48	77.69	40°12'18.801"N	104°40'22.638"W	0.43		Tie-Into CATHEDRAL MWD Surveys
1281.00	10.000	135.400	1271.22	94.98	-92.89	88.19	40°12'18.699"N	104°40'22.502"W	0.35		Begin BHI MWD+IFR Surveys
1374.00	9.810	144.600	1362.83	107.43	-105.09	98.45	40°12'18.578"N	104°40'22.370"W	1.71		
1466.00	10.270	148.810	1453.43	121.05	-118.50	107.24	40°12'18.445"N	104°40'22.257"W	0.94		
1558.00	10.190	156.660	1543.97	135.71	-132.99	114.71	40°12'18.302"N	104°40'22.160"W	1.52		
1650.00	9.890	162.960	1634.56	150.86	-148.01	120.25	40°12'18.154"N	104°40'22.089"W	1.24		
1742.00	9.230	171.170	1725.29	165.79	-162.86	123.69	40°12'18.007"N	104°40'22.045"W	1.64		
1835.00	9.230	180.340	1817.09	180.64	-177.69	124.80	40°12'17.860"N	104°40'22.030"W	1.58		
1928.00	9.940	192.500	1908.80	195.89	-192.99	123.01	40°12'17.709"N	104°40'22.053"W	2.30		
2021.00	9.220	193.120	2000.50	210.90	-208.08	119.58	40°12'17.560"N	104°40'22.098"W	0.78		
2113.00	7.750	195.510	2091.49	223.97	-221.23	116.25	40°12'17.430"N	104°40'22.141"W	1.64		
2206.00	5.490	190.670	2183.87	234.32	-231.65	113.75	40°12'17.327"N	104°40'22.173"W	2.50		
2298.00	2.850	186.530	2275.62	240.89	-238.25	112.68	40°12'17.262"N	104°40'22.187"W	2.89		
2390.00	0.250	199.300	2367.58	243.34	-240.71	112.35	40°12'17.238"N	104°40'22.191"W	2.83		
2819.00	1.660	191.090	2796.51	250.29	-247.69	110.85	40°12'17.169"N	104°40'22.210"W	0.33		
2904.00	0.360	248.430	2881.49	251.58	-249.00	110.36	40°12'17.156"N	104°40'22.216"W	1.76		
2989.00	0.640	284.020	2966.49	251.55	-248.98	109.65	40°12'17.156"N	104°40'22.226"W	0.48		
3075.00	0.670	280.510	3052.48	251.32	-248.77	108.69	40°12'17.158"N	104°40'22.238"W	0.06		
3245.00	0.190	9.530	3222.48	250.84	-248.31	107.76	40°12'17.163"N	104°40'22.250"W	0.41		
3503.00	0.350	9.720	3480.48	249.64	-247.12	107.96	40°12'17.174"N	104°40'22.247"W	0.06		
3760.00	0.770	359.610	3737.46	247.14	-244.61	108.09	40°12'17.199"N	104°40'22.246"W	0.17		
4018.00	0.850	308.790	3995.44	244.18	-241.68	106.58	40°12'17.228"N	104°40'22.265"W	0.27		
4276.00	0.560	331.500	4253.42	241.82	-239.38	104.49	40°12'17.251"N	104°40'22.292"W	0.15		
4535.00	0.610	330.150	4512.41	239.48	-237.07	103.20	40°12'17.274"N	104°40'22.309"W	0.02		
4791.00	1.100	295.660	4768.38	237.17	-234.82	100.31	40°12'17.296"N	104°40'22.346"W	0.27		

REFERENCE WELLPATH IDENTIFICATION			
Operator	KERR-MCGEE OIL & GAS ONSHORE LP (WA)	Slot	SLOT#48 SKIM 35C-28HZ (638'FSL & 1301'FWL, SEC.21)
Area	COLORADO	Well	SKIM 35C-28HZ
Field	WELD COUNTY (UTM/TRUE NORTH)	Wellbore	SKIM 35C-28HZ AWB <12527>
Facility	SEC.21-T3N-R65W		

WELLPATH DATA (125 stations) † = interpolated/extrapolated station

MD (ft)	Inclination [°]	Azimuth [°]	TVD (ft)	Vert Sect (ft)	North (ft)	East (ft)	Latitude	Longitude	DLS [°/100ft]	Comments
4876.00	0.590	115.130	4853.38	236.99	-234.65	99.97	40°12'17.298"N	104°40'22.350"W	1.99	
5051.00	0.910	111.180	5028.36	237.93	-235.54	102.08	40°12'17.289"N	104°40'22.323"W	0.19	
5312.00	0.370	112.250	5289.34	239.06	-236.61	104.79	40°12'17.278"N	104°40'22.288"W	0.21	
5567.00	0.250	24.550	5544.34	238.89	-236.41	105.78	40°12'17.280"N	104°40'22.275"W	0.17	
5823.00	0.580	334.580	5800.33	237.20	-234.73	105.46	40°12'17.297"N	104°40'22.280"W	0.18	
6080.00	0.620	39.970	6057.32	234.97	-232.49	105.79	40°12'17.319"N	104°40'22.275"W	0.25	
6253.00	1.370	89.390	6230.30	234.30	-231.75	108.46	40°12'17.326"N	104°40'22.241"W	0.62	
6338.00	0.990	95.000	6315.28	234.39	-231.81	110.21	40°12'17.326"N	104°40'22.218"W	0.47	
6423.00	0.870	113.300	6400.27	234.74	-232.13	111.54	40°12'17.323"N	104°40'22.201"W	0.37	
6508.00	3.200	171.670	6485.21	237.37	-234.73	112.47	40°12'17.297"N	104°40'22.189"W	3.34	
6593.00	9.800	182.330	6569.62	246.95	-244.32	112.52	40°12'17.202"N	104°40'22.189"W	7.86	
6681.00	16.220	184.450	6655.32	266.67	-264.07	111.26	40°12'17.007"N	104°40'22.205"W	7.31	
6766.00	24.330	181.940	6734.99	296.01	-293.46	109.75	40°12'16.716"N	104°40'22.224"W	9.59	
6851.00	31.990	183.730	6809.87	335.98	-333.49	107.69	40°12'16.321"N	104°40'22.251"W	9.07	
6938.00	38.350	182.700	6880.96	385.91	-383.49	104.91	40°12'15.827"N	104°40'22.287"W	7.34	
6996.00†	43.618	181.232	6924.72	423.87	-421.50	103.63	40°12'15.451"N	104°40'22.303"W	9.23	SSPG
7027.00	46.440	180.560	6946.63	445.78	-443.42	103.29	40°12'15.235"N	104°40'22.308"W	9.23	
7086.00†	50.677	179.417	6985.67	489.98	-487.64	103.32	40°12'14.798"N	104°40'22.307"W	7.33	NBRR
7113.00	52.620	178.940	7002.43	511.16	-508.81	103.62	40°12'14.588"N	104°40'22.303"W	7.33	
7154.00†	54.736	178.775	7026.71	544.19	-541.83	104.28	40°12'14.262"N	104°40'22.295"W	5.17	N470_B_CK
7200.00	57.110	178.600	7052.48	582.29	-579.92	105.15	40°12'13.886"N	104°40'22.284"W	5.17	
7285.00	64.010	179.000	7094.24	656.26	-653.89	106.69	40°12'13.155"N	104°40'22.264"W	8.13	
7372.00	70.890	179.280	7127.58	736.56	-734.18	107.89	40°12'12.361"N	104°40'22.248"W	7.91	
7417.00†	74.310	179.586	7141.03	779.49	-777.11	108.32	40°12'11.937"N	104°40'22.243"W	7.63	FRHS
7457.00	77.350	179.850	7150.82	818.26	-815.89	108.51	40°12'11.554"N	104°40'22.240"W	7.63	
7542.00	83.780	178.760	7164.75	902.06	-899.69	109.53	40°12'10.726"N	104°40'22.227"W	7.67	
7557.00†	84.762	178.164	7166.25	916.99	-914.60	109.93	40°12'10.578"N	104°40'22.222"W	7.65	CDLL
7573.00	85.810	177.530	7167.56	932.93	-930.54	110.53	40°12'10.421"N	104°40'22.214"W	7.65	
7610.00†	87.088	177.749	7169.86	969.85	-967.44	112.05	40°12'10.056"N	104°40'22.195"W	3.50	7" Casing Point
7639.00	88.090	177.920	7171.08	998.82	-996.39	113.15	40°12'09.770"N	104°40'22.181"W	3.50	
7726.00	88.920	178.130	7173.35	1085.79	-1083.31	116.15	40°12'08.911"N	104°40'22.142"W	0.98	
7811.00	89.630	178.210	7174.42	1170.78	-1168.26	118.86	40°12'08.072"N	104°40'22.107"W	0.84	
7896.00	89.750	178.260	7174.88	1255.78	-1253.22	121.48	40°12'07.232"N	104°40'22.073"W	0.15	
7983.00	90.030	177.870	7175.05	1342.77	-1340.16	124.41	40°12'06.373"N	104°40'22.035"W	0.55	
8068.00	90.520	177.370	7174.64	1427.76	-1425.09	127.94	40°12'05.534"N	104°40'21.990"W	0.82	
8154.00	90.000	176.690	7174.25	1513.72	-1510.97	132.40	40°12'04.685"N	104°40'21.932"W	1.00	
8243.00	89.410	177.010	7174.71	1602.68	-1599.84	137.29	40°12'03.807"N	104°40'21.869"W	0.75	
8328.00	88.950	177.720	7175.92	1687.65	-1684.74	141.20	40°12'02.968"N	104°40'21.819"W	1.00	
8413.00	89.160	178.320	7177.33	1772.63	-1769.67	144.13	40°12'02.129"N	104°40'21.781"W	0.75	
8500.00	90.180	178.100	7177.83	1859.63	-1856.63	146.85	40°12'01.269"N	104°40'21.746"W	1.20	
8586.00	90.330	178.800	7177.44	1945.62	-1942.60	149.18	40°12'00.420"N	104°40'21.716"W	0.83	
8671.00	90.370	179.050	7176.93	2030.62	-2027.58	150.77	40°11'59.580"N	104°40'21.696"W	0.30	
8758.00	90.180	178.780	7176.51	2117.62	-2114.56	152.42	40°11'58.720"N	104°40'21.675"W	0.38	
8843.00	88.950	178.700	7177.15	2202.61	-2199.54	154.29	40°11'57.881"N	104°40'21.650"W	1.45	
8928.00	88.490	178.560	7179.05	2287.59	-2284.49	156.32	40°11'57.041"N	104°40'21.624"W	0.57	

REFERENCE WELLPATH IDENTIFICATION			
Operator	KERR-MCGEE OIL & GAS ONSHORE LP (WA)	Slot	SLOT#48 SKIM 35C-28HZ (638'FSL & 1301'FWL, SEC.21)
Area	COLORADO	Well	SKIM 35C-28HZ
Field	WELD COUNTY (UTM/TRUE NORTH)	Wellbore	SKIM 35C-28HZ AWB <12527>
Facility	SEC.21-T3N-R65W		

WELLPATH DATA (125 stations)										
MD [ft]	Inclination [°]	Azimuth [°]	TVD [ft]	Vert Sect [ft]	North [ft]	East [ft]	Latitude	Longitude	DLS [°/100ft]	Comments
9015.00	88.880	179.120	7181.05	2374.57	-2371.45	158.08	40°11'56.182"N	104°40'21.602"W	0.78	
9101.00	89.160	179.420	7182.52	2460.55	-2457.43	159.18	40°11'55.332"N	104°40'21.587"W	0.48	
9271.00	88.920	180.620	7185.37	2630.47	-2627.40	159.12	40°11'53.652"N	104°40'21.588"W	0.72	
9358.00	89.660	180.010	7186.45	2717.43	-2714.40	158.64	40°11'52.793"N	104°40'21.594"W	1.10	
9445.00	90.000	179.530	7186.70	2804.41	-2801.39	158.99	40°11'51.933"N	104°40'21.590"W	0.68	
9618.00	88.980	177.840	7188.24	2977.39	-2974.33	162.96	40°11'50.224"N	104°40'21.539"W	1.14	
9790.00	88.950	178.540	7191.35	3149.36	-3146.22	168.39	40°11'48.526"N	104°40'21.469"W	0.41	
9875.00	90.330	177.810	7191.88	3234.35	-3231.17	171.10	40°11'47.686"N	104°40'21.434"W	1.84	
10047.00	90.640	177.910	7190.43	3406.33	-3403.04	177.52	40°11'45.988"N	104°40'21.351"W	0.19	
10220.00	89.900	177.640	7189.61	3579.31	-3575.91	184.24	40°11'44.279"N	104°40'21.265"W	0.46	
10393.00	89.720	177.480	7190.19	3752.28	-3748.75	191.60	40°11'42.571"N	104°40'21.170"W	0.14	
10563.00	89.260	176.770	7191.70	3922.21	-3918.53	200.13	40°11'40.894"N	104°40'21.060"W	0.50	
10650.00	89.110	177.530	7192.94	4009.17	-4005.41	204.45	40°11'40.035"N	104°40'21.004"W	0.89	
10737.00	90.800	178.440	7193.01	4096.16	-4092.36	207.51	40°11'39.176"N	104°40'20.965"W	2.21	
10822.00	90.650	178.010	7191.93	4181.16	-4177.31	210.14	40°11'38.336"N	104°40'20.931"W	0.54	
10907.00	91.010	178.320	7190.70	4266.14	-4262.26	212.87	40°11'37.497"N	104°40'20.896"W	0.56	
10992.00	91.200	178.490	7189.06	4351.13	-4347.21	215.23	40°11'36.657"N	104°40'20.865"W	0.30	
11078.00	91.450	178.510	7187.07	4437.10	-4433.15	217.48	40°11'35.808"N	104°40'20.836"W	0.29	
11166.00	90.590	178.290	7185.50	4525.09	-4521.10	219.94	40°11'34.939"N	104°40'20.805"W	1.01	
11251.00	89.880	179.100	7185.16	4610.09	-4606.08	221.87	40°11'34.099"N	104°40'20.780"W	1.27	
11336.00	89.900	178.880	7185.32	4695.08	-4691.07	223.37	40°11'33.259"N	104°40'20.760"W	0.26	
11422.00	90.250	178.730	7185.21	4781.08	-4777.05	225.17	40°11'32.410"N	104°40'20.737"W	0.44	
11509.00	89.850	179.880	7185.13	4868.08	-4864.04	226.22	40°11'31.550"N	104°40'20.724"W	1.40	
11595.00	89.200	180.720	7185.84	4954.03	-4950.04	225.77	40°11'30.700"N	104°40'20.730"W	1.23	
11680.00	89.410	181.070	7186.87	5038.96	-5035.02	224.44	40°11'29.860"N	104°40'20.747"W	0.48	
11767.00	89.720	181.630	7187.54	5125.86	-5121.99	222.39	40°11'29.001"N	104°40'20.773"W	0.74	
11852.00	90.180	181.970	7187.61	5210.73	-5206.95	219.72	40°11'28.161"N	104°40'20.807"W	0.67	
11937.00	89.410	182.010	7187.91	5295.58	-5291.90	216.77	40°11'27.322"N	104°40'20.846"W	0.91	
12026.00	90.370	180.660	7188.08	5384.48	-5380.87	214.70	40°11'26.443"N	104°40'20.872"W	1.86	
12113.00	89.880	179.520	7187.89	5471.45	-5467.87	214.56	40°11'25.583"N	104°40'20.874"W	1.43	
12199.00	90.310	180.050	7187.75	5557.43	-5553.87	214.89	40°11'24.733"N	104°40'20.870"W	0.79	
12284.00	90.680	180.430	7187.02	5642.39	-5638.86	214.53	40°11'23.893"N	104°40'20.874"W	0.62	
12369.00	91.300	179.670	7185.55	5727.35	-5723.85	214.45	40°11'23.053"N	104°40'20.875"W	1.15	
12478.00	91.420	180.110	7182.96	5836.29	-5832.82	214.66	40°11'21.977"N	104°40'20.873"W	0.42	Last BHI MWD+IFR Surveys
12527.00	91.420	180.110	7181.75	5885.26	-5881.80	214.57	40°11'21.493"N	104°40'20.874"W	0.00	Projection to Bit

HOLE & CASING SECTIONS - Ref Wellbore: SKIM 35C-28HZ AWB <12527> Ref Wellpath: SKIM 35C-28HZ AWP										
String/Diameter	Start MD [ft]	End MD [ft]	Interval [ft]	Start TVD [ft]	End TVD [ft]	Start N/S [ft]	Start E/W [ft]	End N/S [ft]	End E/W [ft]	
13.5in Open Hole	16.00	1238.00	1222.00	16.00	1228.86	0.00	0.00	-87.63	82.94	
9.625in Casing Surface	16.00	1228.00	1212.00	16.00	1219.01	0.00	0.00	-86.42	81.72	
8.75in Open Hole	1238.00	7620.00	6382.00	1228.86	7170.33	-87.63	82.94	-977.42	112.44	
7in Casing Intermediate	16.00	7610.00	7594.00	16.00	7169.86	0.00	0.00	-967.44	112.05	
6.125in Open Hole	7620.00	12527.00	4907.00	7170.33	7181.75	-977.42	112.44	-5881.80	214.57	

REFERENCE WELLPATH IDENTIFICATION			
Operator	KERR-MCGEE OIL & GAS ONSHORE LP (WA)	Slot	SLOT#48 SKIM 35C-28HZ (638'FSL & 1301'FWL, SEC.21)
Area	COLORADO	Well	SKIM 35C-28HZ
Field	WELD COUNTY (UTM/TRUE NORTH)	Wellbore	SKIM 35C-28HZ AWB <12527>
Facility	SEC.21-T3N-R65W		

TARGETS								
Name	TVD [ft]	North [ft]	East [ft]	Grid East [US ft]	Grid North [US ft]	Latitude	Longitude	Shape
SEC.21-T3N-R65W LINES	18.00	-1064.38	2527.96	1734184.18	14600660.39	40°12'09.097"N	104°39'51.059"W	polygon
SEC.28-T3N-R65W LINES	18.00	-1064.38	2527.96	1734184.18	14600660.39	40°12'09.097"N	104°39'51.059"W	polygon
SKIM 35C-28HZ BHL ON PLAT REV-1 (50'FSL & 1550'FWL, SEC.28)	7172.00	-5882.34	242.51	1731917.37	14595835.94	40°11'21.487"N	104°40'20.514"W	point
SKIM 35C-28HZ LAND BOX	7172.00	-0.04	0.06	1731653.37	14601715.00	40°12'19.616"N	104°40'23.638"W	polygon
SKIM 35C-28HZ BHL ON PLAT REV-2 (50'FSL & 1550'FWL, SEC.28)	7192.00	-5882.34	242.51	1731917.37	14595835.94	40°11'21.487"N	104°40'20.514"W	point

WELLPATH COMPOSITION - Ref Wellbore: SKIM 35C-28HZ AWB <12527> Ref Wellpath: SKIM 35C-28HZ AWP				
Start MD [ft]	End MD [ft]	Positional Uncertainty Model	Log Name/Comment	Wellbore
16.00	1195.00	Custom_APC_ISCWSA REV 2 MWD	CATHEDRAL ENERGY MWD SURVEYS <94-1195>	SKIM 35C-28HZ AWB <12527>
1195.00	7573.00	Custom APC_ISCWSA REV 2 MWD+IFR1+SC (approximation)	BHI MWD+IFR SURVEYS 8 3/4" HOLE <1281-7573>	SKIM 35C-28HZ AWB <12527>
7573.00	12478.00	Custom APC_ISCWSA REV 2 MWD+IFR1+SC (approximation)	BHI MWD+IFR SURVEYS 6 1/8" HOLE <7639-12478>	SKIM 35C-28HZ AWB <12527>
12478.00	12527.00	Blind Drilling (std)	Projection to bit	SKIM 35C-28HZ AWB <12527>

REFERENCE WELLPATH IDENTIFICATION			
Operator	KERR-MCGEE OIL & GAS ONSHORE LP (WA)	Slot	SLOT#48 SKIM 35C-28HZ (638'FSL & 1301'FWL, SEC.21)
Area	COLORADO	Well	SKIM 35C-28HZ
Field	WELD COUNTY (UTM/TRUE NORTH)	Wellbore	SKIM 35C-28HZ AWB <12527>
Facility	SEC.21-T3N-R65W		

WELLPATH COMMENTS				
MD [ft]	Inclination [°]	Azimuth [°]	TVD [ft]	Comment
16.00	0.000	331.500	16.00	Tie-On
94.00	0.100	331.500	94.00	Begin CATHEDRAL MWD Surveys
1195.00	9.800	134.100	1186.50	Tie-Into CATHEDRAL MWD Surveys
1281.00	10.000	135.400	1271.22	Begin BHI MWD+IFR Surveys
6996.00	43.618	181.232	6924.72	SSPG
7086.00	50.677	179.417	6985.67	NBRR
7154.00	54.736	178.775	7026.71	N470_B_CK
7417.00	74.310	179.586	7141.03	FRHS
7557.00	84.762	178.164	7166.25	CDLL
7610.00	87.088	177.749	7169.86	7" Casing Point
12478.00	91.420	180.110	7182.96	Last BHI MWD+IFR Surveys
12527.00	91.420	180.110	7181.75	Projection to Bit