

# Bayswater Exploration & Production, LLC

Well Name: **Arellano L-10-9HN**

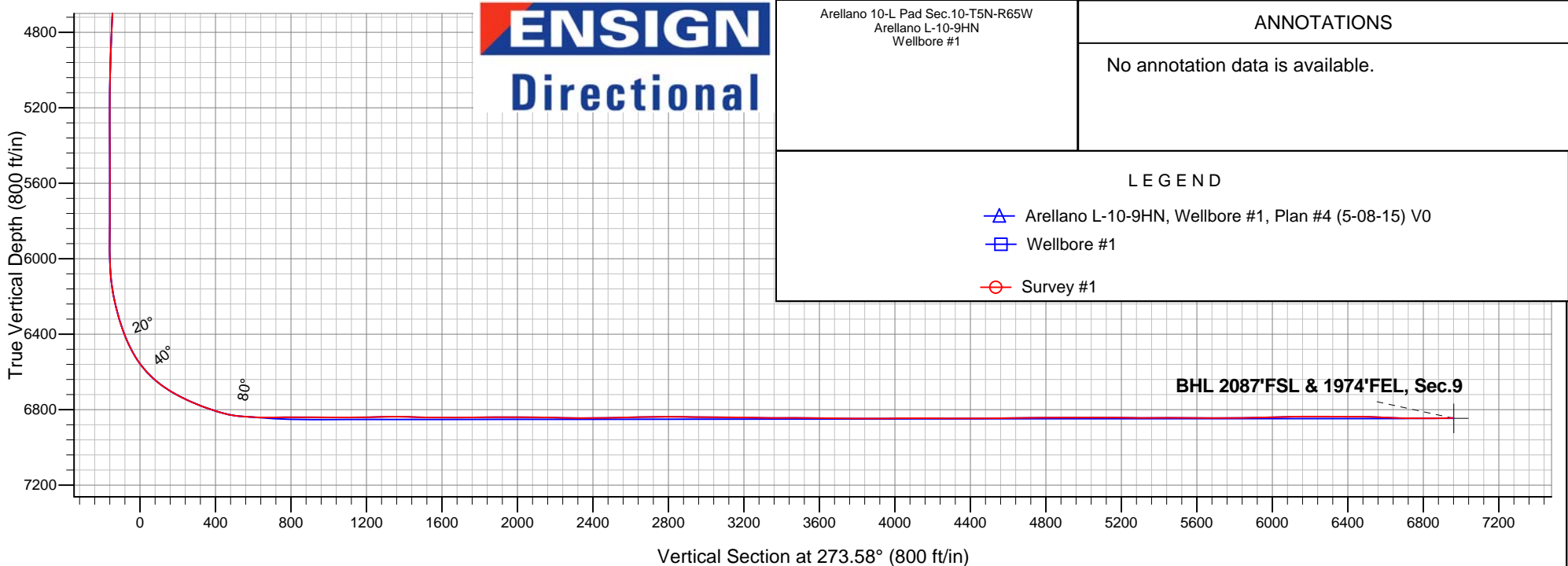
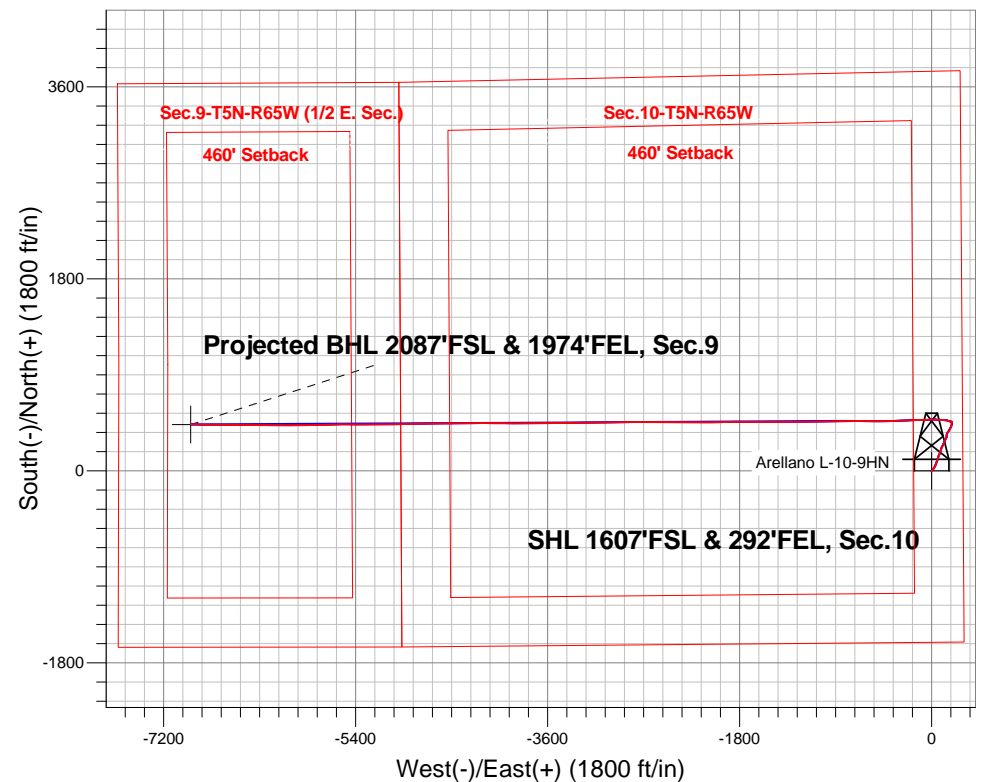
Surface Location: Arellano 10-L Pad Sec.10-T5N-R65W  
North American Datum 1983 , US State Plane 1983 , Colorado Northern Zone

Ground Elevation: 4616.0

+N/-S	+E/-W	Northing	Easting	Latitude	Longitude	Slot
0.0	0.0	1393727.83	3239176.38	40.411005	-104.641077	
RKB - 22.5' WELL @ 4638.5ft (RKB - 22.5')						

## FINAL SURVEY

Projected Bottom Hole Location  
13677'MD 6844'TVD 437'N & 6945'W of SHL  
91.5 degree Incl @ 271.3 degree AZM





# **Bayswater Exploration & Production, LLC**

**SEC.10-T5N-R65W**

**Arellano 10-L Pad Sec.10-T5N-R65W**

**Arellano L-10-9HN**

**Wellbore #1**

**Survey: Survey #1**

## **Standard Survey Report**

**15 May, 2015**



**BAYSWATER**  
**EXPLORATION & PRODUCTION, LLC**

<b>Company:</b>	Bayswater Exploration & Production, LLC	<b>Local Co-ordinate Reference:</b>	Well Arellano L-10-9HN
<b>Project:</b>	SEC.10-T5N-R65W	<b>TVD Reference:</b>	WELL @ 4638.5ft (RKB - 22.5')
<b>Site:</b>	Arellano 10-L Pad Sec.10-T5N-R65W	<b>MD Reference:</b>	WELL @ 4638.5ft (RKB - 22.5')
<b>Well:</b>	Arellano L-10-9HN	<b>North Reference:</b>	True
<b>Wellbore:</b>	Wellbore #1	<b>Survey Calculation Method:</b>	Minimum Curvature
<b>Design:</b>	Wellbore #1	<b>Database:</b>	Landmark

<b>Project</b>	SEC.10-T5N-R65W, Weld County, CO		
<b>Map System:</b>	US State Plane 1983	<b>System Datum:</b>	Mean Sea Level
<b>Geo Datum:</b>	North American Datum 1983		Using Well Reference Point
<b>Map Zone:</b>	Colorado Northern Zone		

Site	Arellano 10-L Pad Sec.10-T5N-R65W				
Site Position:		Northing:	1,393,742.11 ft	Latitude:	40.411044
From:	Lat/Long	Easting:	3,239,181.53 ft	Longitude:	-104.641058
Position Uncertainty:	0.0 ft	Slot Radius:	"	Grid Convergence:	0.55 °

Well	Arellano L-10-9HN					
Well Position	+N/-S	0.0 ft	Northing:	1,393,727.83 ft	Latitude:	40.411005
	+E/-W	0.0 ft	Easting:	3,239,176.38 ft	Longitude:	-104.641077
Position Uncertainty		0.0 ft	Wellhead Elevation:	ft	Ground Level:	4,616.0ft

<b>Wellbore</b>	Wellbore #1				
<b>Magnetics</b>	<b>Model Name</b>	<b>Sample Date</b>	<b>Declination (°)</b>	<b>Dip Angle (°)</b>	<b>Field Strength (nT)</b>
	IGRF2010	5/8/2015	8.27	66.94	52,741

<b>Design</b>	Wellbore #1				
<b>Audit Notes:</b>					
<b>Version:</b>	1.0	<b>Phase:</b>	ACTUAL	<b>Tie On Depth:</b>	0.0
<b>Vertical Section:</b>	<b>Depth From (TVD) (ft)</b>	<b>+N/-S (ft)</b>	<b>+E/-W (ft)</b>	<b>Direction (°)</b>	
	0.0	0.0	0.0	273.58	

<b>Survey Program</b>	<b>Date</b>	5/15/2015			
<b>From (ft)</b>	<b>To (ft)</b>	<b>Survey (Wellbore)</b>	<b>Tool Name</b>	<b>Description</b>	
131.0	13,677.0	Survey #1 (Wellbore #1)	MWD	MWD - Standard	

<b>Survey</b>										
<b>Measured Depth (ft)</b>	<b>Inclination (°)</b>	<b>Azimuth (°)</b>	<b>Vertical Depth (ft)</b>	<b>+N/-S (ft)</b>	<b>+E/-W (ft)</b>	<b>Vertical Section (ft)</b>	<b>Dogleg Rate (°/100ft)</b>	<b>Build Rate (°/100ft)</b>	<b>Turn Rate (°/100ft)</b>	
0.0	0.00	0.00	0.0	0.0	0.0	0.0	0.00	0.00	0.00	
1.0	0.00	154.00	1.0	0.0	0.0	0.0	0.38	0.38	0.00	
<b>SHL 1607'FSL &amp; 292'FEL, Sec.10</b>										
131.0	0.50	154.00	131.0	-0.5	0.3	-0.3	0.38	0.38	0.00	
223.0	0.50	155.60	223.0	-1.2	0.6	-0.7	0.02	0.00	1.74	
315.0	0.60	140.10	315.0	-2.0	1.1	-1.2	0.19	0.11	-16.85	
407.0	0.60	132.90	407.0	-2.7	1.7	-1.9	0.08	0.00	-7.83	
499.0	0.40	132.90	499.0	-3.2	2.3	-2.5	0.22	-0.22	0.00	
591.0	0.70	125.70	591.0	-3.8	3.0	-3.2	0.33	0.33	-7.83	
683.0	0.40	280.90	683.0	-4.0	3.1	-3.4	1.17	-0.33	168.70	
745.0	0.40	279.70	745.0	-4.0	2.7	-3.0	0.01	0.00	-1.94	
829.0	0.80	262.80	829.0	-4.0	1.9	-2.1	0.52	0.48	-20.12	
924.0	1.70	39.90	924.0	-3.0	2.1	-2.3	2.47	0.95	144.32	

<b>Company:</b>	Bayswater Exploration & Production, LLC	<b>Local Co-ordinate Reference:</b>	Well Arellano L-10-9HN
<b>Project:</b>	SEC.10-T5N-R65W	<b>TVD Reference:</b>	WELL @ 4638.5ft (RKB - 22.5')
<b>Site:</b>	Arellano 10-L Pad Sec.10-T5N-R65W	<b>MD Reference:</b>	WELL @ 4638.5ft (RKB - 22.5')
<b>Well:</b>	Arellano L-10-9HN	<b>North Reference:</b>	True
<b>Wellbore:</b>	Wellbore #1	<b>Survey Calculation Method:</b>	Minimum Curvature
<b>Design:</b>	Wellbore #1	<b>Database:</b>	Landmark

Survey										
Measured Depth (ft)	Inclination (°)	Azimuth (°)	Vertical Depth (ft)	+N/-S (ft)	+E/-W (ft)	Vertical Section (ft)	Dogleg Rate (°/100ft)	Build Rate (°/100ft)	Turn Rate (°/100ft)	
1,020.0	3.30	16.20	1,019.9	0.8	3.8	-3.7	1.95	1.67	-24.69	
1,115.0	4.60	23.00	1,114.6	6.9	6.0	-5.6	1.45	1.37	7.16	
1,207.0	5.70	37.80	1,206.3	13.9	10.3	-9.4	1.87	1.20	16.09	
1,299.0	7.70	39.70	1,297.6	22.3	17.0	-15.6	2.19	2.17	2.07	
1,391.0	7.50	34.60	1,388.8	31.9	24.4	-22.3	0.76	-0.22	-5.54	
1,484.0	6.20	27.40	1,481.2	41.4	30.1	-27.5	1.67	-1.40	-7.74	
1,576.0	4.90	19.50	1,572.7	49.5	33.7	-30.6	1.64	-1.41	-8.59	
1,668.0	6.20	22.00	1,664.3	57.8	36.9	-33.2	1.44	1.41	2.72	
1,760.0	6.80	19.50	1,755.7	67.6	40.6	-36.3	0.72	0.65	-2.72	
1,852.0	5.80	17.90	1,847.2	77.1	43.8	-38.9	1.10	-1.09	-1.74	
1,944.0	6.90	20.90	1,938.6	86.7	47.2	-41.7	1.25	1.20	3.26	
2,036.0	7.60	21.10	2,029.9	97.5	51.4	-45.2	0.76	0.76	0.22	
2,128.0	7.20	14.30	2,121.1	108.8	55.0	-48.1	1.05	-0.43	-7.39	
2,220.0	8.30	13.40	2,212.2	120.9	58.0	-50.3	1.20	1.20	-0.98	
2,312.0	6.20	24.50	2,303.5	131.8	61.6	-53.2	2.73	-2.28	12.07	
2,404.0	6.50	26.20	2,394.9	141.0	65.9	-57.0	0.38	0.33	1.85	
2,496.0	7.10	21.60	2,486.3	151.0	70.3	-60.7	0.88	0.65	-5.00	
2,592.0	6.90	18.50	2,581.6	162.0	74.3	-64.1	0.45	-0.21	-3.23	
2,687.0	8.90	21.30	2,675.7	174.2	78.8	-67.8	2.14	2.11	2.95	
2,782.0	9.10	18.70	2,769.5	188.2	83.9	-72.0	0.48	0.21	-2.74	
2,877.0	9.70	12.90	2,863.2	203.1	88.1	-75.2	1.18	0.63	-6.11	
2,972.0	8.50	24.30	2,957.0	217.3	92.8	-79.0	2.27	-1.26	12.00	
3,067.0	7.10	26.00	3,051.2	229.0	98.2	-83.7	1.49	-1.47	1.79	
3,163.0	7.10	24.80	3,146.4	239.7	103.3	-88.1	0.15	0.00	-1.25	
3,258.0	5.70	27.30	3,240.8	249.2	107.9	-92.2	1.50	-1.47	2.63	
3,353.0	5.70	23.00	3,335.4	257.8	111.9	-95.6	0.45	0.00	-4.53	
3,448.0	5.80	29.00	3,429.9	266.3	116.1	-99.3	0.64	0.11	6.32	
3,543.0	6.20	29.40	3,524.4	275.0	121.0	-103.6	0.42	0.42	0.42	
3,638.0	7.30	15.50	3,618.7	285.3	125.1	-107.0	2.07	1.16	-14.63	
3,734.0	7.00	27.80	3,714.0	296.3	129.4	-110.7	1.62	-0.31	12.81	
3,829.0	6.90	27.30	3,808.3	306.5	134.8	-115.4	0.12	-0.11	-0.53	
3,924.0	7.10	14.60	3,902.6	317.3	138.9	-118.8	1.64	0.21	-13.37	
4,019.0	6.20	350.90	3,996.9	328.0	139.5	-118.8	3.01	-0.95	-24.95	
4,115.0	5.80	9.30	4,092.4	337.9	139.5	-118.1	2.04	-0.42	19.17	
4,210.0	4.90	26.20	4,187.0	346.3	142.1	-120.2	1.90	-0.95	17.79	
4,305.0	6.70	31.10	4,281.5	354.7	146.7	-124.3	1.96	1.89	5.16	
4,400.0	7.20	32.50	4,375.8	364.4	152.8	-129.7	0.56	0.53	1.47	
4,495.0	6.30	32.20	4,470.2	373.9	158.8	-135.1	0.95	-0.95	-0.32	
4,590.0	6.90	27.80	4,564.5	383.3	164.2	-139.9	0.83	0.63	-4.63	
4,685.0	5.50	32.50	4,659.0	392.2	169.3	-144.5	1.57	-1.47	4.95	
4,781.0	6.30	25.90	4,754.5	400.8	174.1	-148.7	1.09	0.83	-6.88	
4,876.0	5.90	28.30	4,848.9	409.8	178.7	-152.7	0.50	-0.42	2.53	
4,971.0	6.30	21.60	4,943.4	419.0	182.9	-156.4	0.86	0.42	-7.05	
5,066.0	5.10	15.70	5,037.9	427.9	186.0	-158.9	1.40	-1.26	-6.21	
5,161.0	4.10	8.60	5,132.6	435.3	187.6	-160.1	1.21	-1.05	-7.47	
5,256.0	3.20	7.80	5,227.4	441.3	188.5	-160.6	0.95	-0.95	-0.84	
5,351.0	2.40	1.10	5,322.3	445.9	188.9	-160.7	0.91	-0.84	-7.05	
5,446.0	2.00	355.80	5,417.2	449.6	188.8	-160.4	0.47	-0.42	-5.58	
5,541.0	0.50	17.80	5,512.2	451.6	188.8	-160.2	1.63	-1.58	23.16	
5,637.0	0.90	3.40	5,608.2	452.8	189.0	-160.3	0.45	0.42	-15.00	
5,732.0	0.90	339.80	5,703.2	454.2	188.8	-160.0	0.39	0.00	-24.84	
5,827.0	1.00	53.50	5,798.2	455.4	189.2	-160.4	1.20	0.11	77.58	
5,922.0	0.60	357.40	5,893.2	456.4	189.8	-161.0	0.87	-0.42	-59.05	
6,017.0	1.10	329.10	5,988.2	457.7	189.3	-160.4	0.67	0.53	-29.79	

<b>Company:</b>	Bayswater Exploration & Production, LLC	<b>Local Co-ordinate Reference:</b>	Well Arellano L-10-9HN
<b>Project:</b>	SEC.10-T5N-R65W	<b>TVD Reference:</b>	WELL @ 4638.5ft (RKB - 22.5')
<b>Site:</b>	Arellano 10-L Pad Sec.10-T5N-R65W	<b>MD Reference:</b>	WELL @ 4638.5ft (RKB - 22.5')
<b>Well:</b>	Arellano L-10-9HN	<b>North Reference:</b>	True
<b>Wellbore:</b>	Wellbore #1	<b>Survey Calculation Method:</b>	Minimum Curvature
<b>Design:</b>	Wellbore #1	<b>Database:</b>	Landmark

Survey										
Measured Depth (ft)	Inclination (°)	Azimuth (°)	Vertical Depth (ft)	+N/-S (ft)	+E/-W (ft)	Vertical Section (ft)	Dogleg Rate (°/100ft)	Build Rate (°/100ft)	Turn Rate (°/100ft)	
6,112.0	4.70	290.80	6,083.0	459.8	185.2	-156.1	4.10	3.79	-40.32	
6,207.0	10.40	283.90	6,177.2	463.3	173.2	-144.0	6.06	6.00	-7.26	
6,302.0	14.30	288.30	6,270.0	469.0	153.8	-124.2	4.22	4.11	4.63	
6,397.0	18.80	278.60	6,361.0	475.0	127.5	-97.6	5.54	4.74	-10.21	
6,493.0	24.60	272.30	6,450.2	478.1	92.2	-62.2	6.50	6.04	-6.56	
6,588.0	32.90	272.10	6,533.4	479.9	46.6	-16.5	8.74	8.74	-0.21	
6,683.0	43.70	268.40	6,607.9	479.9	-12.2	42.1	11.62	11.37	-3.89	
6,778.0	53.50	268.80	6,670.6	478.2	-83.4	113.0	10.32	10.32	0.42	
6,826.0	58.00	268.60	6,697.6	477.3	-123.0	152.6	9.38	9.38	-0.42	
6,874.0	61.70	267.40	6,721.7	475.8	-164.5	193.9	8.01	7.71	-2.50	
6,922.0	65.20	266.70	6,743.2	473.6	-207.4	236.5	7.41	7.29	-1.46	
6,969.0	66.90	267.90	6,762.3	471.6	-250.3	279.2	4.30	3.62	2.55	
7,017.0	68.30	267.40	6,780.6	469.8	-294.6	323.4	3.07	2.92	-1.04	
7,064.0	71.40	268.30	6,796.7	468.1	-338.7	367.3	6.84	6.60	1.91	
7,112.0	73.20	269.00	6,811.3	467.0	-384.4	412.8	4.00	3.75	1.46	
7,160.0	76.20	268.40	6,824.0	466.0	-430.7	458.9	6.37	6.25	-1.25	
7,218.0	84.10	269.30	6,833.9	464.8	-487.8	515.8	13.71	13.62	1.55	
7,294.0	86.90	272.00	6,839.9	465.7	-563.5	591.5	5.11	3.68	3.55	
7,339.0	88.80	272.30	6,841.6	467.4	-608.5	636.4	4.27	4.22	0.67	
7,433.0	91.30	268.80	6,841.5	468.3	-702.4	730.3	4.58	2.66	-3.72	
7,527.0	90.00	269.30	6,840.4	466.7	-796.4	824.0	1.48	-1.38	0.53	
7,621.0	89.40	268.80	6,840.9	465.2	-890.4	917.7	0.83	-0.64	-0.53	
7,712.0	89.30	267.90	6,841.9	462.5	-981.4	1,008.3	1.00	-0.11	-0.99	
7,804.0	90.70	269.30	6,841.9	460.3	-1,073.3	1,100.0	2.15	1.52	1.52	
7,896.0	91.40	269.10	6,840.3	459.0	-1,165.3	1,191.7	0.79	0.76	-0.22	
7,988.0	90.90	271.10	6,838.4	459.2	-1,257.3	1,283.5	2.24	-0.54	2.17	
8,079.0	89.30	270.20	6,838.2	460.2	-1,348.3	1,374.4	2.02	-1.76	-0.99	
8,171.0	88.20	269.70	6,840.3	460.1	-1,440.2	1,466.1	1.31	-1.20	-0.54	
8,263.0	89.70	269.30	6,841.9	459.3	-1,532.2	1,557.9	1.69	1.63	-0.43	
8,354.0	89.30	269.00	6,842.7	458.0	-1,623.2	1,648.6	0.55	-0.44	-0.33	
8,445.0	91.30	270.70	6,842.3	457.7	-1,714.2	1,739.4	2.88	2.20	1.87	
8,536.0	90.70	270.60	6,840.7	458.8	-1,805.2	1,830.3	0.67	-0.66	-0.11	
8,628.0	89.90	269.50	6,840.2	458.8	-1,897.2	1,922.1	1.48	-0.87	-1.20	
8,720.0	89.90	269.00	6,840.3	457.6	-1,989.2	2,013.8	0.54	0.00	-0.54	
8,812.0	89.00	268.40	6,841.2	455.6	-2,081.1	2,105.5	1.18	-0.98	-0.65	
8,903.0	89.20	269.70	6,842.7	454.0	-2,172.1	2,196.2	1.45	0.22	1.43	
8,995.0	89.50	271.80	6,843.7	455.3	-2,264.1	2,288.1	2.31	0.33	2.28	
9,086.0	89.80	270.40	6,844.3	457.0	-2,355.1	2,379.0	1.57	0.33	-1.54	
9,177.0	90.20	269.50	6,844.3	456.9	-2,446.1	2,469.8	1.08	0.44	-0.99	
9,269.0	91.50	269.90	6,842.9	456.4	-2,538.1	2,561.6	1.48	1.41	0.43	
9,360.0	92.00	270.20	6,840.1	456.5	-2,629.0	2,652.4	0.64	0.55	0.33	
9,452.0	90.90	270.90	6,837.8	457.4	-2,721.0	2,744.2	1.42	-1.20	0.76	
9,544.0	89.10	269.50	6,837.8	457.7	-2,813.0	2,836.0	2.48	-1.96	-1.52	
9,636.0	88.90	268.10	6,839.4	455.8	-2,904.9	2,927.7	1.54	-0.22	-1.52	
9,728.0	89.80	269.00	6,840.4	453.5	-2,996.9	3,019.4	1.38	0.98	0.98	
9,820.0	89.30	268.80	6,841.2	451.7	-3,088.9	3,111.0	0.59	-0.54	-0.22	
9,912.0	89.40	270.70	6,842.2	451.3	-3,180.9	3,202.8	2.07	0.11	2.07	
10,004.0	88.90	270.20	6,843.6	452.0	-3,272.8	3,294.7	0.77	-0.54	-0.54	
10,096.0	90.00	269.50	6,844.5	451.8	-3,364.8	3,386.5	1.42	1.20	-0.76	
10,188.0	89.80	269.10	6,844.6	450.7	-3,456.8	3,478.2	0.49	-0.22	-0.43	
10,280.0	89.30	268.60	6,845.3	448.8	-3,548.8	3,569.9	0.77	-0.54	-0.54	
10,371.0	90.00	269.50	6,845.9	447.3	-3,639.8	3,660.6	1.25	0.77	0.99	
10,465.0	89.20	269.70	6,846.5	446.6	-3,733.8	3,754.4	0.88	-0.85	0.21	
10,560.0	89.50	269.00	6,847.6	445.6	-3,828.8	3,849.1	0.80	0.32	-0.74	

<b>Company:</b>	Bayswater Exploration & Production, LLC	<b>Local Co-ordinate Reference:</b>	Well Arellano L-10-9HN
<b>Project:</b>	SEC.10-T5N-R65W	<b>TVD Reference:</b>	WELL @ 4638.5ft (RKB - 22.5')
<b>Site:</b>	Arellano 10-L Pad Sec.10-T5N-R65W	<b>MD Reference:</b>	WELL @ 4638.5ft (RKB - 22.5')
<b>Well:</b>	Arellano L-10-9HN	<b>North Reference:</b>	True
<b>Wellbore:</b>	Wellbore #1	<b>Survey Calculation Method:</b>	Minimum Curvature
<b>Design:</b>	Wellbore #1	<b>Database:</b>	Landmark

## Survey

Measured Depth (ft)	Inclination (°)	Azimuth (°)	Vertical Depth (ft)	+N/-S (ft)	+E/-W (ft)	Vertical Section (ft)	Dogleg Rate (°/100ft)	Build Rate (°/100ft)	Turn Rate (°/100ft)
10,654.0	90.80	270.70	6,847.4	445.3	-3,922.8	3,942.9	2.28	1.38	1.81
10,748.0	90.50	270.60	6,846.3	446.4	-4,016.8	4,036.8	0.34	-0.32	-0.11
10,843.0	90.20	270.40	6,845.7	447.2	-4,111.8	4,131.6	0.38	-0.32	-0.21
10,937.0	89.00	270.20	6,846.4	447.7	-4,205.7	4,225.5	1.29	-1.28	-0.21
11,032.0	89.50	269.50	6,847.6	447.5	-4,300.7	4,320.3	0.91	0.53	-0.74
11,126.0	91.10	269.90	6,847.1	447.0	-4,394.7	4,414.1	1.75	1.70	0.43
11,220.0	90.70	269.70	6,845.7	446.6	-4,488.7	4,507.8	0.48	-0.43	-0.21
11,315.0	90.50	269.10	6,844.7	445.6	-4,583.7	4,602.6	0.67	-0.21	-0.63
11,409.0	90.20	268.80	6,844.1	443.9	-4,677.7	4,696.3	0.45	-0.32	-0.32
11,503.0	90.60	268.60	6,843.4	441.8	-4,771.7	4,789.9	0.48	0.43	-0.21
11,597.0	90.00	267.70	6,842.9	438.8	-4,865.6	4,883.5	1.15	-0.64	-0.96
11,692.0	90.30	269.50	6,842.7	436.4	-4,960.6	4,978.1	1.92	0.32	1.89
11,786.0	90.00	269.30	6,842.5	435.5	-5,054.6	5,071.9	0.38	-0.32	-0.21
11,880.0	89.70	270.60	6,842.7	435.4	-5,148.6	5,165.7	1.42	-0.32	1.38
11,974.0	88.80	269.90	6,843.9	435.8	-5,242.6	5,259.5	1.21	-0.96	-0.74
12,068.0	90.60	270.60	6,844.4	436.2	-5,336.6	5,353.4	2.05	1.91	0.74
12,163.0	90.20	269.90	6,843.8	436.6	-5,431.6	5,448.2	0.85	-0.42	-0.74
12,257.0	89.50	269.10	6,844.0	435.8	-5,525.5	5,542.0	1.13	-0.74	-0.85
12,351.0	90.10	269.10	6,844.3	434.3	-5,619.5	5,635.7	0.64	0.64	0.00
12,446.0	89.60	267.70	6,844.6	431.7	-5,714.5	5,730.3	1.56	-0.53	-1.47
12,540.0	90.30	268.60	6,844.7	428.6	-5,808.4	5,823.9	1.21	0.74	0.96
12,634.0	91.80	270.40	6,842.9	427.8	-5,902.4	5,917.6	2.49	1.60	1.91
12,728.0	91.50	269.70	6,840.2	427.9	-5,996.4	6,011.4	0.81	-0.32	-0.74
12,822.0	91.20	270.90	6,838.0	428.4	-6,090.3	6,105.2	1.32	-0.32	1.28
12,916.0	90.10	270.60	6,837.0	429.6	-6,184.3	6,199.1	1.21	-1.17	-0.32
13,011.0	89.50	270.20	6,837.3	430.3	-6,279.3	6,293.9	0.76	-0.63	-0.42
13,106.0	90.00	269.50	6,837.7	430.0	-6,374.3	6,388.7	0.91	0.53	-0.74
13,200.0	89.20	269.30	6,838.4	429.0	-6,468.3	6,482.5	0.88	-0.85	-0.21
13,295.0	87.50	271.10	6,841.1	429.4	-6,563.3	6,577.3	2.61	-1.79	1.89
13,389.0	87.80	271.10	6,844.9	431.2	-6,657.2	6,671.1	0.32	0.32	0.00
13,484.0	89.70	270.60	6,847.0	432.6	-6,752.1	6,766.0	2.07	2.00	-0.53
13,578.0	90.90	271.40	6,846.5	434.2	-6,846.1	6,859.9	1.53	1.28	0.85
13,622.0	91.50	271.30	6,845.6	435.3	-6,890.1	6,903.8	1.38	1.36	-0.23
13,677.0	91.50	271.30	6,844.2	436.5	-6,945.1	6,958.8	0.00	0.00	0.00

BHL 2085'FSL & 1976'FEL, Sec.9

Checked By: \_\_\_\_\_ Approved By: \_\_\_\_\_ Date: \_\_\_\_\_