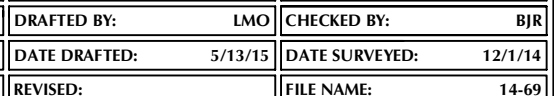
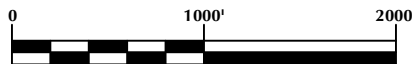
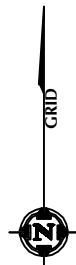
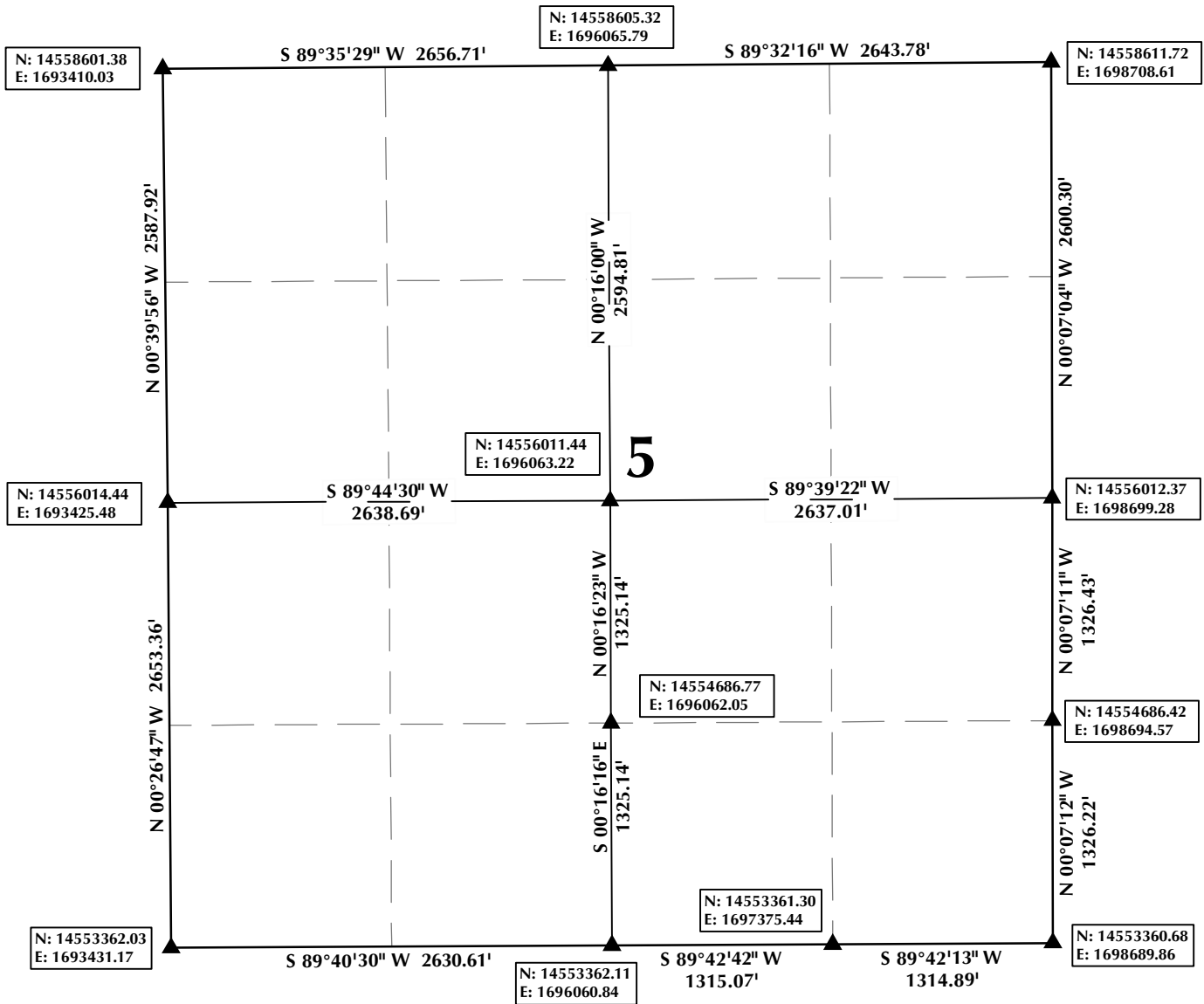


K:\ANADARKO\2014\2014 69 FORT LUPTON GREENS SEC 8 T1N R66W\PLATS\FORT LUPTON GREENS 29-8HZ.dwg, 5/14/2015 3:09:01 PM, lake



# UTM COORDINATE EXHIBIT SECTION 5, T1N, R66W



SCALE: 1" = 1000'

## NOTES:

- ▲ INDICATES FOUND SECTION CORNER
- INDICATES CALCULATED CORNER
- BEARINGS ARE BASED ON GRID NORTH, COLORADO STATE PLANE NORTH GRID (NAD 83)
- DRAWING N/E COORDINATES ARE BASED ON UTM COORDINATE SYSTEM NAD83, ZONE 13

UTM COORDINATE EXHIBIT  
SECTION 5, T1N, R66W, 6TH P.M.  
WELD COUNTY, COLORADO

**Kerr-McGee Oil &  
Gas Onshore L.P.**  
1099 18th Street  
Denver, Colorado 80202



## CONSULTING, LLC

**SHERIDAN OFFICE**  
1095 Saberton Avenue  
Sheridan, Wyoming 82801  
Phone 307-674-0609

**LOVELAND OFFICE**  
1635 Foxtrail Drive, Suite 204  
Loveland, Colorado 80538  
Phone 970-776-4331

DRAFTED BY:	MDZ	CHECKED BY:	BJR
DATE DRAFTED:	4/10/15	DATE SURVEYED:	12/1/14
REVISED:		FILE NAME:	14-69