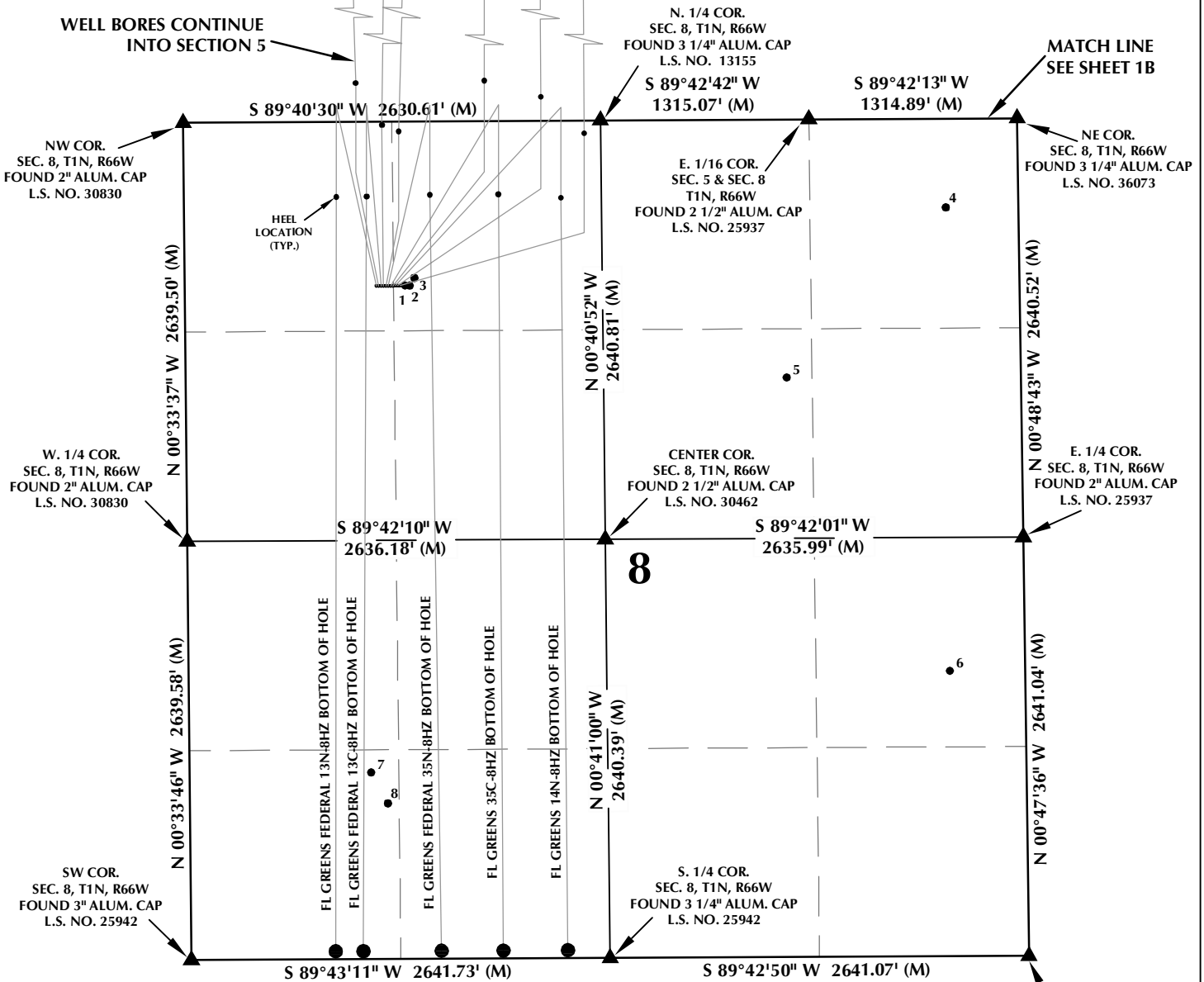


# MULTI-WELL PLAN SECTION 8, T1N, R66W



## WELL NOTES:

FL GREENS FEDERAL 13N-8HZ  
SURFACE: 1035' FNL, 1208' FWL  
BOTTOM HOLE: 50' FSL, 911' FWL

FL GREENS FEDERAL 30N-5HZ  
SURFACE: 1035' FNL, 1223' FWL  
BOTTOM HOLE: 50' FNL, 998' FWL

FL GREENS FEDERAL 13C-8HZ  
SURFACE: 1035' FNL, 1238' FWL  
BOTTOM HOLE: 50' FSL, 1085' FWL

FL GREENS FEDERAL 30C-5HZ  
SURFACE: 1035' FNL, 1253' FWL  
BOTTOM HOLE: 50' FNL, 1355' FWL

FL GREENS FEDERAL 4N-5HZ  
SURFACE: 1035' FNL, 1268' FWL  
BOTTOM HOLE: 50' FNL, 1543' FWL

FL GREENS FEDERAL 35N-8HZ  
SURFACE: 1035' FNL, 1283' FWL  
BOTTOM HOLE: 50' FSL, 1578' FWL

FL GREENS 35C-8HZ  
SURFACE: 1035' FNL, 1298' FWL  
BOTTOM HOLE: 50' FSL, 1968' FWL

FL GREENS 29C-5HZ  
SURFACE: 1035' FNL, 1313' FWL  
BOTTOM HOLE: 50' FNL, 1943' FWL

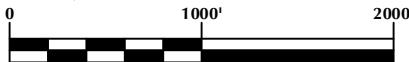
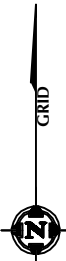
FL GREENS 14N-8HZ  
SURFACE: 1035' FNL, 1328' FWL  
BOTTOM HOLE: 50' FSL, 2375' FWL

FL GREENS 3N-5HZ  
SURFACE: 1034' FNL, 1343' FWL  
BOTTOM HOLE: 50' FNL, 2293' FWL

FL GREENS 28C-5HZ  
SURFACE: 1034' FNL, 1358' FWL  
BOTTOM HOLE: 50' FNL, 2546' FWL

## NOTES:

- ▲ INDICATES FOUND SECTION CORNER
- INDICATES CALCULATED CORNER
- BASIS OF BEARING DERIVED FROM COLORADO COORDINATE SYSTEM 1983 NORTH ZONE UNLESS OTHERWISE NOTED.
- ALL MEASURED DISTANCES ARE GRID. COMBINED SCALE FACTOR: .99972967
- WELL FOOTAGES ARE MEASURED AT RIGHT ANGLES TO THE SECTION LINES.



## WELL PAD - FL GREENS FEDERAL 35N-8HZ

MULTI-WELL PLAN  
FL GREENS FEDERAL 13N-8HZ, FL GREENS FEDERAL 30N-5HZ,  
FL GREENS FEDERAL 13C-8HZ, FL GREENS FEDERAL 30C-5HZ,  
FL GREENS FEDERAL 4N-5HZ, FL GREENS FEDERAL 35N-8HZ,  
FL GREENS 35C-8HZ, FL GREENS 29C-5HZ, FL GREENS 14N-8HZ,  
FL GREENS 3N-5HZ & FL GREENS 28C-5HZ  
LOCATED IN SECTIONS 5 & 8  
T1N, R66W, 6TH P.M.  
WELD COUNTY, COLORADO

**Kerr-McGee Oil &  
Gas Onshore L.P.**  
1099 18th Street  
Denver, Colorado 80202



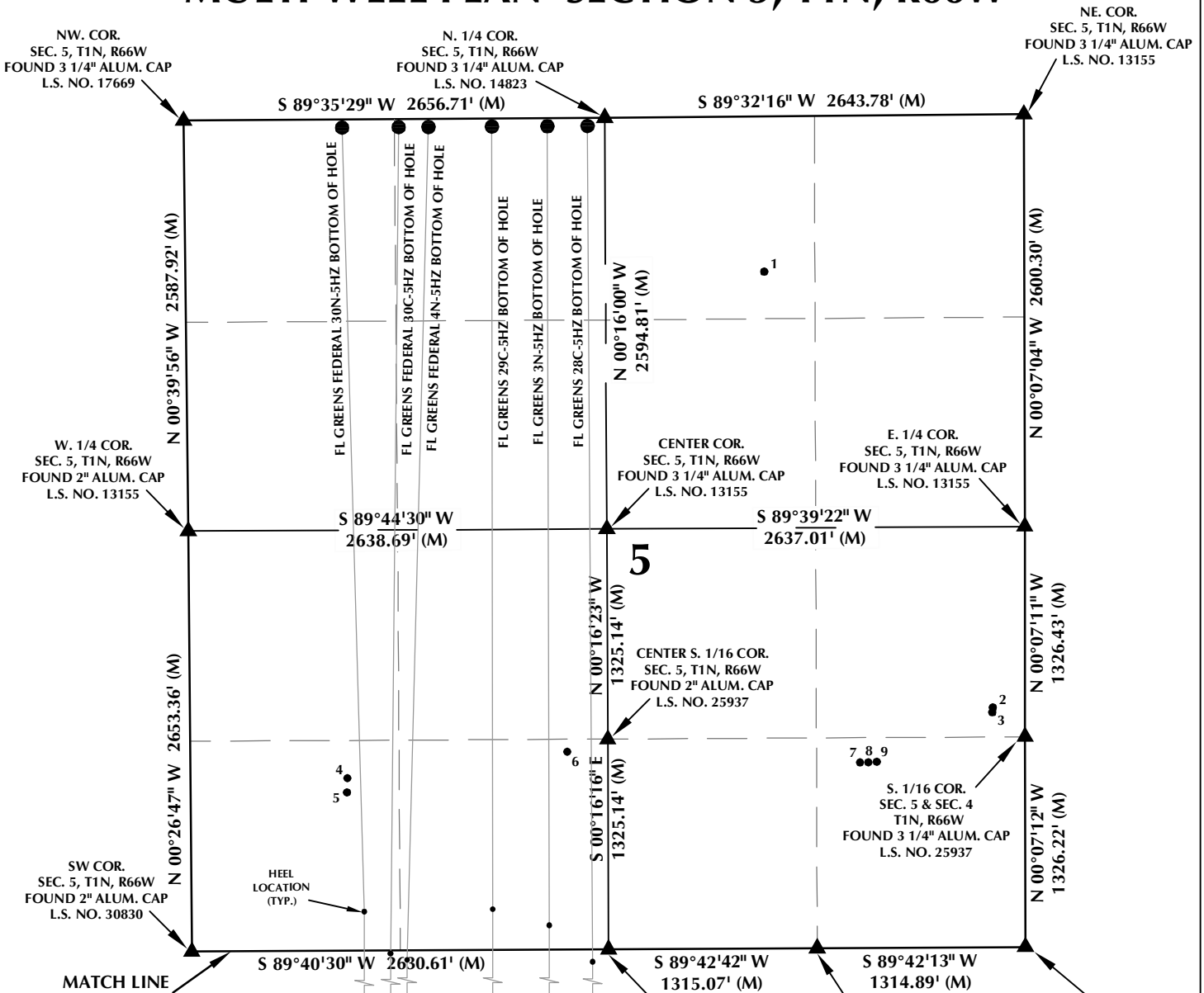
## CONSULTING, LLC

SHERIDAN OFFICE 1095 Saberton Avenue Sheridan, Wyoming 82801 Phone 307-674-0609

LOVELAND OFFICE 1635 Foxtrail Drive, Suite 204 Loveland, Colorado 80538 Phone 970-776-4331

DRAFTED BY: LMO	CHECKED BY: BJR	SHEET NO: <b>1A</b> 1A OF 2
DATE DRAFTED: 5/13/15	DATE SURVEYED: 12/1/14	
REVISED:	FILE NAME: 14-69	

# MULTI-WELL PLAN SECTION 5, T1N, R66W



### WELL NOTES:

FL GREENS FEDERAL 13N-8HZ  
SURFACE: 1035' FNL, 1208' FWL  
BOTTOM HOLE: 50' FSL, 911' FWL

FL GREENS FEDERAL 30N-5HZ  
SURFACE: 1035' FNL, 1223' FWL  
BOTTOM HOLE: 50' FNL, 998' FWL

FL GREENS FEDERAL 13C-8HZ  
SURFACE: 1035' FNL, 1238' FWL  
BOTTOM HOLE: 50' FSL, 1085' FWL

FL GREENS FEDERAL 30C-5HZ  
SURFACE: 1035' FNL, 1253' FWL  
BOTTOM HOLE: 50' FNL, 1355' FWL

FL GREENS FEDERAL 4N-5HZ  
SURFACE: 1035' FNL, 1268' FWL  
BOTTOM HOLE: 50' FNL, 1543' FWL

FL GREENS FEDERAL 35N-8HZ  
SURFACE: 1035' FNL, 1283' FWL  
BOTTOM HOLE: 50' FSL, 1578' FWL

FL GREENS 35C-8HZ  
SURFACE: 1035' FNL, 1298' FWL  
BOTTOM HOLE: 50' FSL, 1968' FWL

FL GREENS 29C-5HZ  
SURFACE: 1035' FNL, 1313' FWL  
BOTTOM HOLE: 50' FNL, 1943' FWL

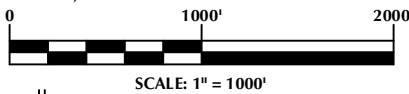
FL GREENS 14N-8HZ  
SURFACE: 1035' FNL, 1328' FWL  
BOTTOM HOLE: 50' FSL, 2375' FWL

FL GREENS 3N-5HZ  
SURFACE: 1034' FNL, 1343' FWL  
BOTTOM HOLE: 50' FNL, 2293' FWL

FL GREENS 28C-5HZ  
SURFACE: 1034' FNL, 1358' FWL  
BOTTOM HOLE: 50' FNL, 2546' FWL

### NOTES:

- ▲ INDICATES FOUND SECTION CORNER
- INDICATES CALCULATED CORNER
- BASIS OF BEARING DERIVED FROM COLORADO COORDINATE SYSTEM 1983 NORTH ZONE UNLESS OTHERWISE NOTED.
- ALL MEASURED DISTANCES ARE GRID. COMBINED SCALE FACTOR: .99972967
- WELL FOOTAGES ARE MEASURED AT RIGHT ANGLES TO THE SECTION LINES.



### WELL PAD - FL GREENS FEDERAL 35N-8HZ

MULTI-WELL PLAN  
FL GREENS FEDERAL 13N-8HZ, FL GREENS FEDERAL 30N-5HZ,  
FL GREENS FEDERAL 13C-8HZ, FL GREENS FEDERAL 30C-5HZ,  
FL GREENS FEDERAL 4N-5HZ, FL GREENS FEDERAL 35N-8HZ,  
FL GREENS 35C-8HZ, FL GREENS 29C-5HZ, FL GREENS 14N-8HZ,  
FL GREENS 3N-5HZ & FL GREENS 28C-5HZ  
LOCATED IN SECTIONS 5 & 8  
T1N, R66W, 6TH P.M.  
WELD COUNTY, COLORADO

**Kerr-McGee Oil &  
Gas Onshore L.P.**  
1099 18th Street  
Denver, Colorado 80202



### CONSULTING, LLC

SHERIDAN OFFICE  
1095 Saberton Avenue  
Sheridan, Wyoming 82801  
Phone 307-674-0609

LOVELAND OFFICE  
1635 Foxtrail Drive, Suite 204  
Loveland, Colorado 80538  
Phone 970-776-4331

DRAFTED BY: LMO	CHECKED BY: BJR	SHEET NO: <b>1B</b> 1B OF 2
DATE DRAFTED: 5/13/15	DATE SURVEYED: 12/1/14	
REVISED:	FILE NAME: 14-69	

# MULTI-WELL PLAN SECTION 8, T1N, R66W

NUMBER	WELL NAME	API NUMBER	LATITUDE (NAD 83)	LONGITUDE (NAD 83)	SURFACE ELEVATION	TOTAL DEPTH
1	WETHINGTON 1-7A	05-123-21318	40.070124	-104.805529	4926.5	8457
2	GREENS FEDERAL 5-8A	05-123-21320	40.070121	-104.805420	4927.3	8261
3	ADAM GABLE GU TRUE 1	05-123-11191	40.070255	-104.805313	4926.5	8070
4	SUTTON FOUNDERS 1	05-123-20771	40.071402	-104.793322	4960.7	8070
5	ADAM GABEL GAS UNIT 1	05-123-08183	40.068482	-104.796937	4947.0	8060
6	ENSOR FEDERAL 9-8	05-123-22741	40.063380	-104.793317	4964.3	8088
7	SCHMIDT FEDERAL 11-8A	05-123-21116	40.061701	-104.806372	4930.7	8311
8	WILLIAM F SCHMIDT GAS UT 1	05-123-08287	40.061166	-104.806004	4932.6	8068

**NOTES:**

- \* INDICATES EXISTING WELLS THAT WERE NOT SURVEYED BUT DERIVED FROM COLORADO OIL AND GAS CONSERVATION COMMISSION (COGCC).

**EXISTING WELL EXHIBIT  
SECTION 8, T1N, R66W, 6TH P.M.  
WELD COUNTY, COLORADO**

**Kerr-McGee Oil &  
Gas Onshore L.P.  
1099 18th Street  
Denver, Colorado 80202**



**CONSULTING, LLC**

<b>SHERIDAN OFFICE</b> 1095 Saberton Avenue Sheridan, Wyoming 82801 Phone 307-674-0609	<b>LOVELAND OFFICE</b> 1635 Foxtrail Drive, Suite 204 Loveland, Colorado 80538 Phone 970-776-4331
---	--

DRAFTED BY: LMO	CHECKED BY: BJR	SHEET NO:
DATE DRAFTED: 5/13/15	DATE SURVEYED: 12/1/14	<b>2A</b>
REVISED:	FILE NAME: 14-69	2A OF 2

# MULTI-WELL PLAN SECTION 5, T1N, R66W

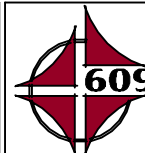
NUMBER	WELL NAME	API NUMBER	LATITUDE (NAD 83)	LONGITUDE (NAD 83)	SURFACE ELEVATION	TOTAL DEPTH
1	MARGARET TWOMBLY UNIT C 1	05-123-08307	40.084665	-104.797469	4939.1	8161
2	HSR ATLER FEDERAL 9-5A	05-123-20179	40.077086	-104.792391	4946.6	8399
3	HSR-ATLER 10-5	05-123-20321	40.077006	-104.792404	4946.3	8150
4	HSR AMELIA & ELIZABETH FEDERAL 4-5	05-123-19790	40.075954	-104.806953	4916.6	9091
5	GOTTLIEB GABEL 1	05-123-07744	40.075705	-104.806965	4916.7	8040
6	(HSR) FT LUPTON FEDERAL 11-5 A	05-123-19575	40.076382	-104.801993	4919.8	8245
7	HSR HOLTON FEDERAL 15-5A	05-123-20322	40.076154	-104.795399	4932.4	8354
8	THOMAS HOLTON UNIT 1	05-123-15469	40.076157	-104.795212	4933.3	8302
9	HSR HOLTON 16-5	05-123-20337	40.076163	-104.795021	4932.8	7854

**NOTES:**

- \* INDICATES EXISTING WELLS THAT WERE NOT SURVEYED BUT DERIVED FROM COLORADO OIL AND GAS CONSERVATION COMMISSION (COGCC).

**EXISTING WELL EXHIBIT  
SECTION 5, T1N, R66W, 6TH P.M.  
WELD COUNTY, COLORADO**

**Kerr-McGee Oil &  
Gas Onshore L.P.  
1099 18th Street  
Denver, Colorado 80202**



**CONSULTING, LLC**

**SHERIDAN OFFICE**  
1095 Saberton Avenue  
Sheridan, Wyoming 82801  
Phone 307-674-0609

**LOVELAND OFFICE**  
1635 Foxtrail Drive, Suite 204  
Loveland, Colorado 80538  
Phone 970-776-4331

DRAFTED BY: LMO	CHECKED BY: BJR	<b>SHEET NO: 2B</b>
DATE DRAFTED: 5/13/15	DATE SURVEYED: 12/1/14	
REVISED:	FILE NAME: 14-69	