

Location:	COLORADO	Slot:	SLOT#06 WINDER #6(806'FNL & 684'FEL,SEC.09)
Field:	WELD COUNTY (NAD83/TRUE NORTH)	Well:	WINDER #6
Facility:	SEC.09-T06N-R67W	Wellbore:	WINDER #6 PWB

Location:	COLORADO	Slot:	SLOT#06 WINDER #6(806'FNL & 684'FEL,SEC.09)
Field:	WELD COUNTY (NAD83/TRUE NORTH)	Well:	WINDER #6
Facility:	SEC.09-T06N-R67W	Wellbore:	WINDER #6 PWB

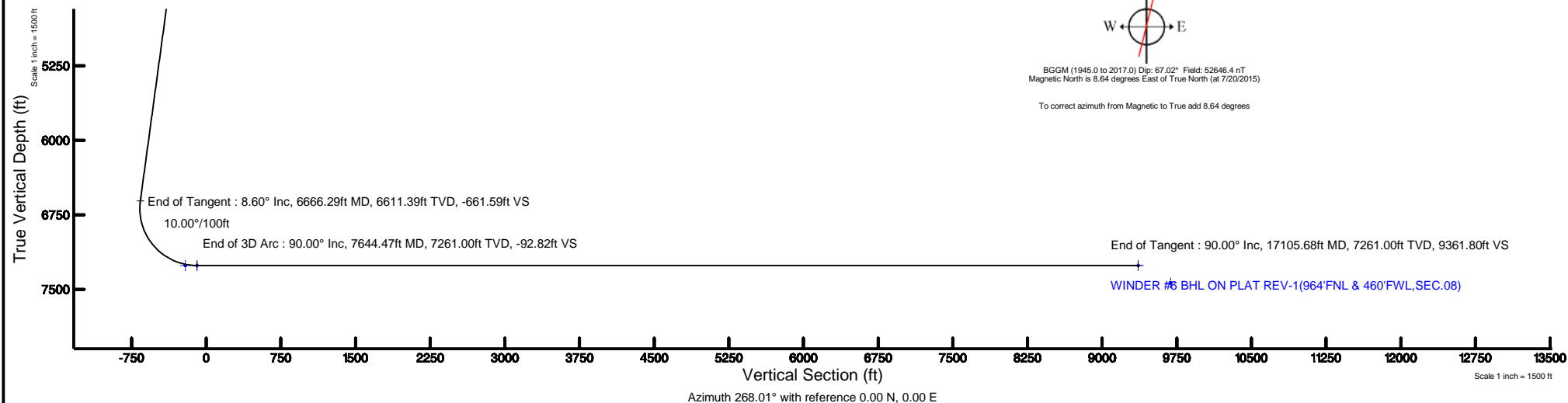
True vertical depths are referenced to SAVANNA 802 (15KB) (RKB)	Grid System: NAD83 / Lambert Colorado SP, Northern Zone (501), US feet
Measured depths are referenced to SAVANNA 802 (15KB) (RKB)	North Reference: True north
SAVANNA 802 (15KB) (RKB) to Mean Sea Level: 4883 feet	Scale: True distance
Mean Sea Level to Mud line (At Slot: SLOT#06 WINDER #6(806/FNL & 684/FEL,SEC.09)): 0 feet	Depths are in feet
Coordinates are in feet referenced to Slot	Created by: ingmjmr on 7/20/2015

Facility Name				Grid East (US ft)	Grid North (US ft)	Latitude	Longitude
SEC.09-T06N-R57W				3169265.228	1428175.850	40°30'25.736"N	104°53'28.612"W
Slot	Local N (ft)	Local E (ft)	Grid East (US ft)	Grid North (US ft)	Latitude	Longitude	
SLOT#06 WINDER #6(806FNL & 684FEL,SEC.09)	-130.04	-1.08	3169265.039	1428045.809	40°30'24.451"N	104°53'28.626"W	
SAVANNA R02 (15KB) (RKB) to Mud line (At Slot: SLOT#06 WINDER #6(806FNL & 684FEL,SEC.09))						4883ft	
Mean Sea Level to Mud line (At Slot: SLOT#06 WINDER #6(806FNL & 684FEL,SEC.09))						0ft	
SAVANNA R02 (15KB) (RKB) to Mean Sea Level						4883ft	

Name	MD (ft)	TVD (ft)	Local N (ft)	Local E (ft)	Grid East (US ft)	Grid North (US ft)	Latitude	Longitude
TWELL/WINDER 1/2 SECTION 08		47.00	-3204.14	-9563.62	3159703.97	1424776.07	40°29'52.711"N	104°55'32.678"W
TWELL/WINDER 1/2 SECTION 09		47.00	-3204.14	-9563.62	3159703.97	1424776.07	40°29'52.711"N	104°55'32.678"W
TWELL/WINDER SECTION 08		47.00	-3204.14	-9563.62	3159703.97	1424776.07	40°29'52.711"N	104°55'32.678"W
TWELL/WINDER SECTION 09		47.00	-3204.14	-9563.62	3159703.97	1424776.07	40°29'52.711"N	104°55'32.678"W
WINDER #6 Bkt. ON PLAT REV-1 (B64/FWL & 480/FWL_SEC.08)	17105.68	7261.00	-324.63	-9356.17	3159911.64	1427656.97	40°30'21.226"N	104°52'28.748"W
WINDER #6 LANDING POINT		7261.00	-349.36	221.36	3169848.78	1427697.99	40°30'20.999"N	104°53'25.760"W
WINDER #6 LANDING POINT REV-1	7644.47	7261.00	-349.34	105.00	3160372.43	1427697.21	40°30'20.999"N	104°53'27.267"W
WINDER PAD NORTH 1/2 HARDLINES(460' SETBACKS)		7437.00	-3204.14	-9563.62	3159703.97	1424776.07	40°29'52.711"N	104°55'32.678"W

Start MD (ft)	End MD (ft)	Tool	Model	Log Name/Comment	Wellbore
15.00	17105.68	NaviTrak	NaviTrak (Standard)		WINDER #6 PWB

Design Comment	MD (ft)	Inc (°)	Az (°)	TVD (ft)	Local N (ft)	Local E (ft)	DLS (°/100ft)	VS (ft)
Tie On	15.00	0.000	114.736	15.00	0.00	0.00	0.00	0.00
End of Tangent	1500.00	0.000	114.736	1500.00	0.00	0.00	0.00	0.00
End of Build	1930.15	8.603	114.736	1928.53	-13.49	29.28	2.00	-28.79
End of Tangent	6666.29	8.603	114.736	6611.39	-309.93	672.74	0.00	-661.59
End of 3D Arc	7644.47	90.000	270.150	7261.00	-349.34	105.00	10.00	-92.82
End of Tangent	17105.68	90.000	270.150	7261.00	-324.63	-9356.17	0.00	9361.80





Planned Wellpath Report

WINDER #6 PWP (REV-B.0)

Page 1 of 9



REFERENCE WELLPATH IDENTIFICATION

Operator	EXTRACTION OIL & GAS	Slot	SLOT#06 WINDER #6(806'FNL & 684'FEL,SEC.09)
Area	COLORADO	Well	WINDER #6
Field	WELD COUNTY (NAD83/TRUE NORTH)	Wellbore	WINDER #6 PWB
Facility	SEC.09-T06N-R67W		

REPORT SETUP INFORMATION

Projection System	NAD83 / Lambert Colorado SP, Northern Zone (501), US feet	Software System	WellArchitect® 4.1.1
North Reference	True	User	Ingmjmr
Scale	0.999967	Report Generated	7/20/2015 at 10:51:28 AM
Convergence at slot	0.39° East	Database/Source file	Denver/WINDER_#6_PWB.xml

WELLPATH LOCATION

	Local coordinates		Grid coordinates		Geographic coordinates	
	North[ft]	East[ft]	Easting[US ft]	Northing[US ft]	Latitude	Longitude
Slot Location	-130.04	-1.08	3169265.04	1428045.81	40°30'24.451"N	104°53'28.626"W
Facility Reference Pt			3169265.23	1428175.85	40°30'25.736"N	104°53'28.612"W
Field Reference Pt			3185481.27	1419166.81	40°28'55.560"N	104°49'59.556"W

WELLPATH DATUM

Calculation method	Minimum curvature	SAVANNA 802 (15'KB) (RKB) to Facility Vertical Datum	4883.00ft
Horizontal Reference Pt	Slot	SAVANNA 802 (15'KB) (RKB) to Mean Sea Level	4883.00ft
Vertical Reference Pt	SAVANNA 802 (15'KB) (RKB)	SAVANNA 802 (15'KB) (RKB) to Mud Line at Slot (SLOT#06 WINDER #6(806'FNL & 684'FEL,SEC.09))	4883.00ft
MD Reference Pt	SAVANNA 802 (15'KB) (RKB)	Section Origin	N 0.00, E 0.00 ft
Field Vertical Reference	Mean Sea Level	Section Azimuth	268.01°



Planned Wellpath Report

WINDER #6 PWP (REV-B.0)

Page 2 of 9



REFERENCE WELLPATH IDENTIFICATION

Operator	EXTRACTION OIL & GAS	Slot	SLOT#06 WINDER #6(806'FNL & 684'FEL,SEC.09)
Area	COLORADO	Well	WINDER #6
Field	WELD COUNTY (NAD83/TRUE NORTH)	Wellbore	WINDER #6 PWB
Facility	SEC.09-T06N-R67W		

WELLPATH DATA (179 stations) † = interpolated/extrapolated station

MD [ft]	Inclination [°]	Azimuth [°]	TVD [ft]	Vert Sect [ft]	North [ft]	East [ft]	DLS [°/100ft]	Comments
0.00†	0.000	114.736	0.00	0.00	0.00	0.00	0.00	
15.00	0.000	114.736	15.00	0.00	0.00	0.00	0.00	Tie On
115.00†	0.000	114.736	115.00	0.00	0.00	0.00	0.00	
215.00†	0.000	114.736	215.00	0.00	0.00	0.00	0.00	
315.00†	0.000	114.736	315.00	0.00	0.00	0.00	0.00	
415.00†	0.000	114.736	415.00	0.00	0.00	0.00	0.00	
515.00†	0.000	114.736	515.00	0.00	0.00	0.00	0.00	
615.00†	0.000	114.736	615.00	0.00	0.00	0.00	0.00	
715.00†	0.000	114.736	715.00	0.00	0.00	0.00	0.00	
815.00†	0.000	114.736	815.00	0.00	0.00	0.00	0.00	
915.00†	0.000	114.736	915.00	0.00	0.00	0.00	0.00	
1015.00†	0.000	114.736	1015.00	0.00	0.00	0.00	0.00	
1115.00†	0.000	114.736	1115.00	0.00	0.00	0.00	0.00	
1215.00†	0.000	114.736	1215.00	0.00	0.00	0.00	0.00	
1315.00†	0.000	114.736	1315.00	0.00	0.00	0.00	0.00	
1415.00†	0.000	114.736	1415.00	0.00	0.00	0.00	0.00	
1500.00	0.000	114.736	1500.00	0.00	0.00	0.00	0.00	End of Tangent
1515.00†	0.300	114.736	1515.00	-0.04	-0.02	0.04	2.00	
1615.00†	2.300	114.736	1614.97	-2.06	-0.97	2.10	2.00	
1715.00†	4.300	114.736	1714.80	-7.20	-3.37	7.32	2.00	
1815.00†	6.300	114.736	1814.37	-15.45	-7.24	15.71	2.00	
1915.00†	8.300	114.736	1913.55	-26.80	-12.56	27.25	2.00	
1930.15	8.603	114.736	1928.53	-28.79	-13.49	29.28	2.00	End of Build
2015.00†	8.603	114.736	2012.43	-40.13	-18.80	40.80	0.00	
2115.00†	8.603	114.736	2111.31	-53.49	-25.06	54.39	0.00	
2215.00†	8.603	114.736	2210.18	-66.85	-31.32	67.98	0.00	
2315.00†	8.603	114.736	2309.06	-80.21	-37.58	81.56	0.00	
2415.00†	8.603	114.736	2407.93	-93.57	-43.84	95.15	0.00	
2515.00†	8.603	114.736	2506.81	-106.93	-50.09	108.73	0.00	
2615.00†	8.603	114.736	2605.68	-120.29	-56.35	122.32	0.00	



Planned Wellpath Report

WINDER #6 PWP (REV-B.0)

Page 3 of 9



REFERENCE WELLPATH IDENTIFICATION

Operator	EXTRACTION OIL & GAS	Slot	SLOT#06 WINDER #6(806'FNL & 684'FEL,SEC.09)
Area	COLORADO	Well	WINDER #6
Field	WELD COUNTY (NAD83/TRUE NORTH)	Wellbore	WINDER #6 PWB
Facility	SEC.09-T06N-R67W		

WELLPATH DATA (179 stations) † = interpolated/extrapolated station

MD [ft]	Inclination [°]	Azimuth [°]	TVD [ft]	Vert Sect [ft]	North [ft]	East [ft]	DLS [°/100ft]	Comments
2715.00†	8.603	114.736	2704.55	-133.65	-62.61	135.91	0.00	
2815.00†	8.603	114.736	2803.43	-147.01	-68.87	149.49	0.00	
2915.00†	8.603	114.736	2902.30	-160.38	-75.13	163.08	0.00	
3015.00†	8.603	114.736	3001.18	-173.74	-81.39	176.67	0.00	
3115.00†	8.603	114.736	3100.05	-187.10	-87.65	190.25	0.00	
3215.00†	8.603	114.736	3198.93	-200.46	-93.91	203.84	0.00	
3315.00†	8.603	114.736	3297.80	-213.82	-100.17	217.42	0.00	
3415.00†	8.603	114.736	3396.68	-227.18	-106.43	231.01	0.00	
3515.00†	8.603	114.736	3495.55	-240.54	-112.69	244.60	0.00	
3615.00†	8.603	114.736	3594.43	-253.90	-118.95	258.18	0.00	
3715.00†	8.603	114.736	3693.30	-267.26	-125.20	271.77	0.00	
3815.00†	8.603	114.736	3792.18	-280.62	-131.46	285.35	0.00	
3915.00†	8.603	114.736	3891.05	-293.99	-137.72	298.94	0.00	
4015.00†	8.603	114.736	3989.93	-307.35	-143.98	312.53	0.00	
4115.00†	8.603	114.736	4088.80	-320.71	-150.24	326.11	0.00	
4215.00†	8.603	114.736	4187.68	-334.07	-156.50	339.70	0.00	
4315.00†	8.603	114.736	4286.55	-347.43	-162.76	353.29	0.00	
4415.00†	8.603	114.736	4385.43	-360.79	-169.02	366.87	0.00	
4515.00†	8.603	114.736	4484.30	-374.15	-175.28	380.46	0.00	
4615.00†	8.603	114.736	4583.18	-387.51	-181.54	394.04	0.00	
4715.00†	8.603	114.736	4682.05	-400.87	-187.80	407.63	0.00	
4815.00†	8.603	114.736	4780.93	-414.23	-194.06	421.22	0.00	
4915.00†	8.603	114.736	4879.80	-427.60	-200.32	434.80	0.00	
5015.00†	8.603	114.736	4978.68	-440.96	-206.57	448.39	0.00	
5115.00†	8.603	114.736	5077.55	-454.32	-212.83	461.98	0.00	
5215.00†	8.603	114.736	5176.43	-467.68	-219.09	475.56	0.00	
5315.00†	8.603	114.736	5275.30	-481.04	-225.35	489.15	0.00	
5415.00†	8.603	114.736	5374.18	-494.40	-231.61	502.73	0.00	
5515.00†	8.603	114.736	5473.05	-507.76	-237.87	516.32	0.00	
5615.00†	8.603	114.736	5571.93	-521.12	-244.13	529.91	0.00	



Planned Wellpath Report

WINDER #6 PWP (REV-B.0)

Page 4 of 9



REFERENCE WELLPATH IDENTIFICATION

Operator	EXTRACTION OIL & GAS	Slot	SLOT#06 WINDER #6(806'FNL & 684'FEL,SEC.09)
Area	COLORADO	Well	WINDER #6
Field	WELD COUNTY (NAD83/TRUE NORTH)	Wellbore	WINDER #6 PWB
Facility	SEC.09-T06N-R67W		

WELLPATH DATA (179 stations) † = interpolated/extrapolated station

MD [ft]	Inclination [°]	Azimuth [°]	TVD [ft]	Vert Sect [ft]	North [ft]	East [ft]	DLS [°/100ft]	Comments
5715.00†	8.603	114.736	5670.80	-534.48	-250.39	543.49	0.00	
5815.00†	8.603	114.736	5769.68	-547.84	-256.65	557.08	0.00	
5915.00†	8.603	114.736	5868.55	-561.21	-262.91	570.66	0.00	
6015.00†	8.603	114.736	5967.43	-574.57	-269.17	584.25	0.00	
6115.00†	8.603	114.736	6066.30	-587.93	-275.43	597.84	0.00	
6215.00†	8.603	114.736	6165.17	-601.29	-281.69	611.42	0.00	
6315.00†	8.603	114.736	6264.05	-614.65	-287.94	625.01	0.00	
6415.00†	8.603	114.736	6362.92	-628.01	-294.20	638.60	0.00	
6515.00†	8.603	114.736	6461.80	-641.37	-300.46	652.18	0.00	
6615.00†	8.603	114.736	6560.67	-654.73	-306.72	665.77	0.00	
6666.29	8.603	114.736	6611.39	-661.59	-309.93	672.74	0.00	End of Tangent
6715.00†	4.653	140.813	6659.77	-666.04	-312.99	677.30	10.00	
6815.00†	7.915	243.229	6759.38	-662.23	-319.25	673.70	10.00	
6915.00†	17.418	258.575	6856.86	-641.16	-325.33	652.83	10.00	
7015.00†	27.273	263.137	6949.25	-603.47	-331.05	615.32	10.00	
7115.00†	37.202	265.393	7033.73	-550.31	-336.23	562.30	10.00	
7215.00†	47.158	266.803	7107.74	-483.28	-340.71	495.39	10.00	
7315.00†	57.126	267.818	7169.03	-404.44	-344.37	416.63	10.00	
7353.84†	61.000	268.150	7189.00	-371.12	-345.53	383.34	10.00	NIO A
7415.00†	67.101	268.626	7215.75	-316.16	-347.08	328.39	10.00	
7515.00†	77.079	269.322	7246.46	-221.14	-348.76	233.38	10.00	
7548.52†	80.424	269.541	7253.00	-188.28	-349.09	200.51	10.00	NIO B
7615.00†	87.059	269.964	7260.24	-122.26	-349.37	134.46	10.00	
7644.47	90.000	270.150	7261.00 ¹	-92.82	-349.34	105.00	10.00	End of 3D Arc
7715.00†	90.000	270.150	7261.00	-22.35	-349.16	34.47	0.00	
7815.00†	90.000	270.150	7261.00	77.59	-348.89	-65.53	0.00	
7915.00†	90.000	270.150	7261.00	177.52	-348.63	-165.53	0.00	
8015.00†	90.000	270.150	7261.00	277.45	-348.37	-265.53	0.00	
8115.00†	90.000	270.150	7261.00	377.38	-348.11	-365.53	0.00	
8215.00†	90.000	270.150	7261.00	477.31	-347.85	-465.53	0.00	



Planned Wellpath Report

WINDER #6 PWP (REV-B.0)

Page 5 of 9



REFERENCE WELLPATH IDENTIFICATION

Operator	EXTRACTION OIL & GAS	Slot	SLOT#06 WINDER #6(806'FNL & 684'FEL,SEC.09)
Area	COLORADO	Well	WINDER #6
Field	WELD COUNTY (NAD83/TRUE NORTH)	Wellbore	WINDER #6 PWB
Facility	SEC.09-T06N-R67W		

WELLPATH DATA (179 stations) † = interpolated/extrapolated station

MD [ft]	Inclination [°]	Azimuth [°]	TVD [ft]	Vert Sect [ft]	North [ft]	East [ft]	DLS [°/100ft]	Comments
8315.00†	90.000	270.150	7261.00	577.24	-347.59	-565.52	0.00	
8415.00†	90.000	270.150	7261.00	677.17	-347.33	-665.52	0.00	
8515.00†	90.000	270.150	7261.00	777.10	-347.07	-765.52	0.00	
8615.00†	90.000	270.150	7261.00	877.03	-346.81	-865.52	0.00	
8715.00†	90.000	270.150	7261.00	976.96	-346.54	-965.52	0.00	
8815.00†	90.000	270.150	7261.00	1076.89	-346.28	-1065.52	0.00	
8915.00†	90.000	270.150	7261.00	1176.82	-346.02	-1165.52	0.00	
9015.00†	90.000	270.150	7261.00	1276.75	-345.76	-1265.52	0.00	
9115.00†	90.000	270.150	7261.00	1376.68	-345.50	-1365.52	0.00	
9215.00†	90.000	270.150	7261.00	1476.61	-345.24	-1465.52	0.00	
9315.00†	90.000	270.150	7261.00	1576.54	-344.98	-1565.52	0.00	
9415.00†	90.000	270.150	7261.00	1676.47	-344.72	-1665.52	0.00	
9515.00†	90.000	270.150	7261.00	1776.40	-344.46	-1765.52	0.00	
9615.00†	90.000	270.150	7261.00	1876.33	-344.19	-1865.52	0.00	
9715.00†	90.000	270.150	7261.00	1976.26	-343.93	-1965.52	0.00	
9815.00†	90.000	270.150	7261.00	2076.19	-343.67	-2065.52	0.00	
9915.00†	90.000	270.150	7261.00	2176.13	-343.41	-2165.52	0.00	
10015.00†	90.000	270.150	7261.00	2276.06	-343.15	-2265.52	0.00	
10115.00†	90.000	270.150	7261.00	2375.99	-342.89	-2365.52	0.00	
10215.00†	90.000	270.150	7261.00	2475.92	-342.63	-2465.52	0.00	
10315.00†	90.000	270.150	7261.00	2575.85	-342.37	-2565.52	0.00	
10415.00†	90.000	270.150	7261.00	2675.78	-342.11	-2665.52	0.00	
10515.00†	90.000	270.150	7261.00	2775.71	-341.84	-2765.52	0.00	
10615.00†	90.000	270.150	7261.00	2875.64	-341.58	-2865.52	0.00	
10715.00†	90.000	270.150	7261.00	2975.57	-341.32	-2965.52	0.00	
10815.00†	90.000	270.150	7261.00	3075.50	-341.06	-3065.52	0.00	
10915.00†	90.000	270.150	7261.00	3175.43	-340.80	-3165.52	0.00	
11015.00†	90.000	270.150	7261.00	3275.36	-340.54	-3265.52	0.00	
11115.00†	90.000	270.150	7261.00	3375.29	-340.28	-3365.52	0.00	
11215.00†	90.000	270.150	7261.00	3475.22	-340.02	-3465.51	0.00	



Planned Wellpath Report

WINDER #6 PWP (REV-B.0)

Page 6 of 9



REFERENCE WELLPATH IDENTIFICATION

Operator	EXTRACTION OIL & GAS	Slot	SLOT#06 WINDER #6(806'FNL & 684'FEL,SEC.09)
Area	COLORADO	Well	WINDER #6
Field	WELD COUNTY (NAD83/TRUE NORTH)	Wellbore	WINDER #6 PWB
Facility	SEC.09-T06N-R67W		

WELLPATH DATA (179 stations) † = interpolated/extrapolated station

MD [ft]	Inclination [°]	Azimuth [°]	TVD [ft]	Vert Sect [ft]	North [ft]	East [ft]	DLS [°/100ft]	Comments
11315.00†	90.000	270.150	7261.00	3575.15	-339.76	-3565.51	0.00	
11415.00†	90.000	270.150	7261.00	3675.08	-339.49	-3665.51	0.00	
11515.00†	90.000	270.150	7261.00	3775.01	-339.23	-3765.51	0.00	
11615.00†	90.000	270.150	7261.00	3874.94	-338.97	-3865.51	0.00	
11715.00†	90.000	270.150	7261.00	3974.87	-338.71	-3965.51	0.00	
11815.00†	90.000	270.150	7261.00	4074.80	-338.45	-4065.51	0.00	
11915.00†	90.000	270.150	7261.00	4174.73	-338.19	-4165.51	0.00	
12015.00†	90.000	270.150	7261.00	4274.66	-337.93	-4265.51	0.00	
12115.00†	90.000	270.150	7261.00	4374.60	-337.67	-4365.51	0.00	
12215.00†	90.000	270.150	7261.00	4474.53	-337.41	-4465.51	0.00	
12315.00†	90.000	270.150	7261.00	4574.46	-337.14	-4565.51	0.00	
12415.00†	90.000	270.150	7261.00	4674.39	-336.88	-4665.51	0.00	
12515.00†	90.000	270.150	7261.00	4774.32	-336.62	-4765.51	0.00	
12615.00†	90.000	270.150	7261.00	4874.25	-336.36	-4865.51	0.00	
12715.00†	90.000	270.150	7261.00	4974.18	-336.10	-4965.51	0.00	
12815.00†	90.000	270.150	7261.00	5074.11	-335.84	-5065.51	0.00	
12915.00†	90.000	270.150	7261.00	5174.04	-335.58	-5165.51	0.00	
13015.00†	90.000	270.150	7261.00	5273.97	-335.32	-5265.51	0.00	
13115.00†	90.000	270.150	7261.00	5373.90	-335.06	-5365.51	0.00	
13215.00†	90.000	270.150	7261.00	5473.83	-334.79	-5465.51	0.00	
13315.00†	90.000	270.150	7261.00	5573.76	-334.53	-5565.51	0.00	
13415.00†	90.000	270.150	7261.00	5673.69	-334.27	-5665.51	0.00	
13515.00†	90.000	270.150	7261.00	5773.62	-334.01	-5765.51	0.00	
13615.00†	90.000	270.150	7261.00	5873.55	-333.75	-5865.51	0.00	
13715.00†	90.000	270.150	7261.00	5973.48	-333.49	-5965.51	0.00	
13815.00†	90.000	270.150	7261.00	6073.41	-333.23	-6065.51	0.00	
13915.00†	90.000	270.150	7261.00	6173.34	-332.97	-6165.51	0.00	
14015.00†	90.000	270.150	7261.00	6273.27	-332.71	-6265.51	0.00	
14115.00†	90.000	270.150	7261.00	6373.20	-332.44	-6365.50	0.00	
14215.00†	90.000	270.150	7261.00	6473.14	-332.18	-6465.50	0.00	



Planned Wellpath Report

WINDER #6 PWP (REV-B.0)

Page 7 of 9



REFERENCE WELLPATH IDENTIFICATION

Operator	EXTRACTION OIL & GAS	Slot	SLOT#06 WINDER #6(806'FNL & 684'FEL,SEC.09)
Area	COLORADO	Well	WINDER #6
Field	WELD COUNTY (NAD83/TRUE NORTH)	Wellbore	WINDER #6 PWB
Facility	SEC.09-T06N-R67W		

WELLPATH DATA (179 stations) † = interpolated/extrapolated station

MD [ft]	Inclination [°]	Azimuth [°]	TVD [ft]	Vert Sect [ft]	North [ft]	East [ft]	DLS [°/100ft]	Comments
14315.00†	90.000	270.150	7261.00	6573.07	-331.92	-6565.50	0.00	
14415.00†	90.000	270.150	7261.00	6673.00	-331.66	-6665.50	0.00	
14515.00†	90.000	270.150	7261.00	6772.93	-331.40	-6765.50	0.00	
14615.00†	90.000	270.150	7261.00	6872.86	-331.14	-6865.50	0.00	
14715.00†	90.000	270.150	7261.00	6972.79	-330.88	-6965.50	0.00	
14815.00†	90.000	270.150	7261.00	7072.72	-330.62	-7065.50	0.00	
14915.00†	90.000	270.150	7261.00	7172.65	-330.35	-7165.50	0.00	
15015.00†	90.000	270.150	7261.00	7272.58	-330.09	-7265.50	0.00	
15115.00†	90.000	270.150	7261.00	7372.51	-329.83	-7365.50	0.00	
15215.00†	90.000	270.150	7261.00	7472.44	-329.57	-7465.50	0.00	
15315.00†	90.000	270.150	7261.00	7572.37	-329.31	-7565.50	0.00	
15415.00†	90.000	270.150	7261.00	7672.30	-329.05	-7665.50	0.00	
15515.00†	90.000	270.150	7261.00	7772.23	-328.79	-7765.50	0.00	
15615.00†	90.000	270.150	7261.00	7872.16	-328.53	-7865.50	0.00	
15715.00†	90.000	270.150	7261.00	7972.09	-328.27	-7965.50	0.00	
15815.00†	90.000	270.150	7261.00	8072.02	-328.00	-8065.50	0.00	
15915.00†	90.000	270.150	7261.00	8171.95	-327.74	-8165.50	0.00	
16015.00†	90.000	270.150	7261.00	8271.88	-327.48	-8265.50	0.00	
16115.00†	90.000	270.150	7261.00	8371.81	-327.22	-8365.50	0.00	
16215.00†	90.000	270.150	7261.00	8471.74	-326.96	-8465.50	0.00	
16315.00†	90.000	270.150	7261.00	8571.67	-326.70	-8565.50	0.00	
16415.00†	90.000	270.150	7261.00	8671.61	-326.44	-8665.50	0.00	
16515.00†	90.000	270.150	7261.00	8771.54	-326.18	-8765.50	0.00	
16615.00†	90.000	270.150	7261.00	8871.47	-325.92	-8865.50	0.00	
16715.00†	90.000	270.150	7261.00	8971.40	-325.65	-8965.50	0.00	
16815.00†	90.000	270.150	7261.00	9071.33	-325.39	-9065.50	0.00	
16915.00†	90.000	270.150	7261.00	9171.26	-325.13	-9165.50	0.00	
17015.00†	90.000	270.150	7261.00	9271.19	-324.87	-9265.50	0.00	
17105.68	90.000	270.150	7261.00 ²	9361.80	-324.63	-9356.17	0.00	End of Tangent

HOLE & CASING SECTIONS - Ref Wellbore: WINDER #6 PWB Ref Wellpath: WINDER #6 PWP (REV-B.0)

String/Diameter	Start MD [ft]	End MD [ft]	Interval [ft]	Start TVD [ft]	End TVD [ft]	Start N/S [ft]	Start E/W [ft]	End N/S [ft]	End E/W [ft]
7.875in Open Hole	1500.00	17105.68	15605.68	1500.00	N/A	0.00	0.00	N/A	N/A
5.5in Casing	15.00	17105.68	17090.68	15.00	N/A	0.00	0.00	N/A	N/A

TARGETS

Name	MD [ft]	TVD [ft]	North [ft]	East [ft]	Grid East [US ft]	Grid North [US ft]	Latitude	Longitude	Shape
TWELL/WINDER 1/2 SECTION 08		47.00	-3204.14	-9583.62	3159703.97	1424776.07	40°29'52.771"N	104°55'32.678"W	polygon
TWELL/WINDER 1/2 SECTION 09		47.00	-3204.14	-9583.62	3159703.97	1424776.07	40°29'52.771"N	104°55'32.678"W	polygon
TWELL/WINDER SECTION 08		47.00	-3204.14	-9583.62	3159703.97	1424776.07	40°29'52.771"N	104°55'32.678"W	polygon

TWELL/WINDER SECTION 09		47.00	-3204.14	-9583.62	3159703.97	1424776.07	40°29'52.771"N	104°55'32.678"W	polygon
2) WINDER #6 BHL ON PLAT REV-1(964'FNL & 460'FWL,SEC.08)	17105.68	7261.00	-324.63	-9356.17	3159911.64	1427656.97	40°30'21.226"N	104°55'29.748"W	point
WINDER #6 LANDING POINT		7261.00	-349.36	221.36	3169488.78	1427697.99	40°30'20.999"N	104°53'25.760"W	point
1) WINDER #6 LANDING POINT REV-1	7644.47	7261.00	-349.34	105.00	3169372.43	1427697.21	40°30'20.999"N	104°53'27.267"W	point
WINDER PAD NORTH 1/2 HARDLINES(460' SETBACKS)		7437.00	-3204.14	-9583.62	3159703.97	1424776.07	40°29'52.771"N	104°55'32.678"W	polygon



Planned Wellpath Report

WINDER #6 PWP (REV-B.0)

Page 8 of 9



REFERENCE WELLPATH IDENTIFICATION

Operator	EXTRACTION OIL & GAS	Slot	SLOT#06 WINDER #6(806'FNL & 684'FEL,SEC.09)
Area	COLORADO	Well	WINDER #6
Field	WELD COUNTY (NAD83/TRUE NORTH)	Wellbore	WINDER #6 PWB
Facility	SEC.09-T06N-R67W		

SURVEY PROGRAM - Ref Wellbore: WINDER #6 PWB Ref Wellpath: WINDER #6 PWP (REV-B.0)

Start MD [ft]	End MD [ft]	Positional Uncertainty Model	Log Name/Comment	Wellbore
15.00	17105.68	NaviTrak (Standard)		WINDER #6 PWB



Planned Wellpath Report

WINDER #6 PWP (REV-B.0)

Page 9 of 9



REFERENCE WELLPATH IDENTIFICATION

Operator	EXTRACTION OIL & GAS	Slot	SLOT#06 WINDER #6(806'FNL & 684'FEL,SEC.09)
Area	COLORADO	Well	WINDER #6
Field	WELD COUNTY (NAD83/TRUE NORTH)	Wellbore	WINDER #6 PWB
Facility	SEC.09-T06N-R67W		

WELLPATH COMMENTS

MD [ft]	Inclination [°]	Azimuth [°]	TVD [ft]	Comment
7353.84	61.000	268.150	7189.00	NIO A
7548.52	80.424	269.541	7253.00	NIO B

DESIGN COMMENTS

MD [ft]	Inclination [°]	Azimuth [°]	TVD [ft]	Comment
15.00	0.000	114.736	15.00	Tie On
1500.00	0.000	114.736	1500.00	End of Tangent
1930.15	8.603	114.736	1928.53	End of Build
6666.29	8.603	114.736	6611.39	End of Tangent
7644.47	90.000	270.150	7261.00	End of 3D Arc
17105.68	90.000	270.150	7261.00	End of Tangent