

OPERATOR: **WPX ENERGY**

WELL NAME: GM 432-28
FIELD NAME: GRAND VALLEY
DRILLING RIG: H&P 318
API #: 05-045-22505

LOCATION: SEC. 28 T6S R96W
SURFACE HOLE: 1530' FSL , 2329' FWL
BOTTOM HOLE: 2279' FNL , 1690' FEL
SCALE: 1"=100'



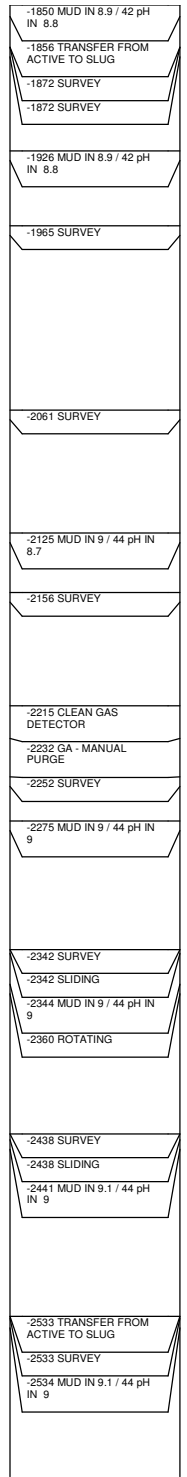
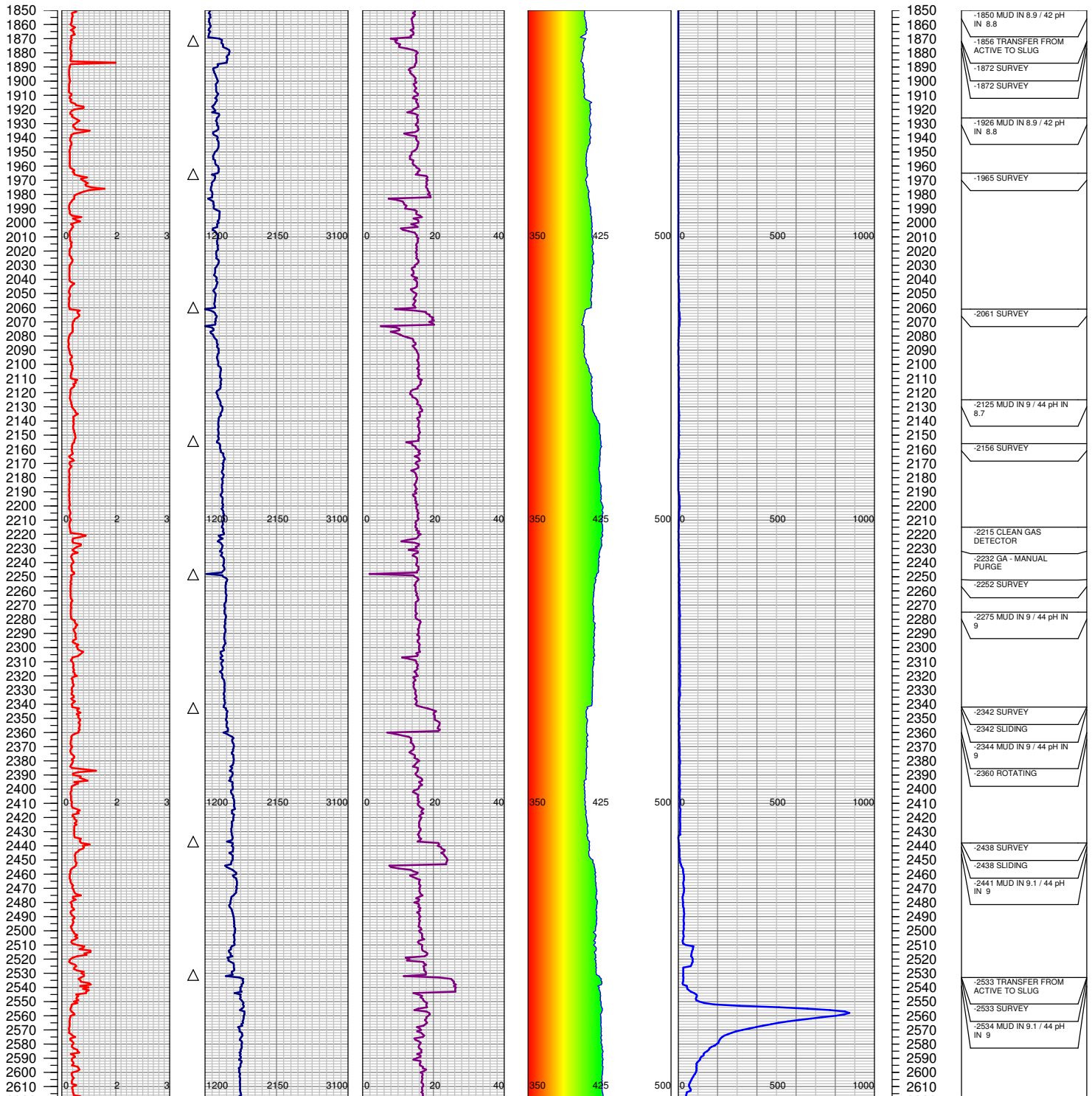
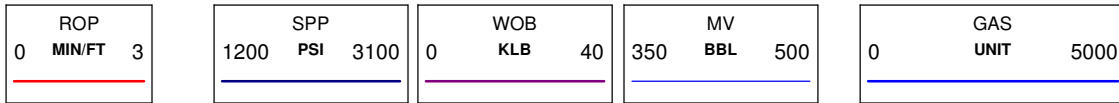
533 Bogart Lane, Unit A
Grand Junction, CO 81505
Office (970) 424-5162

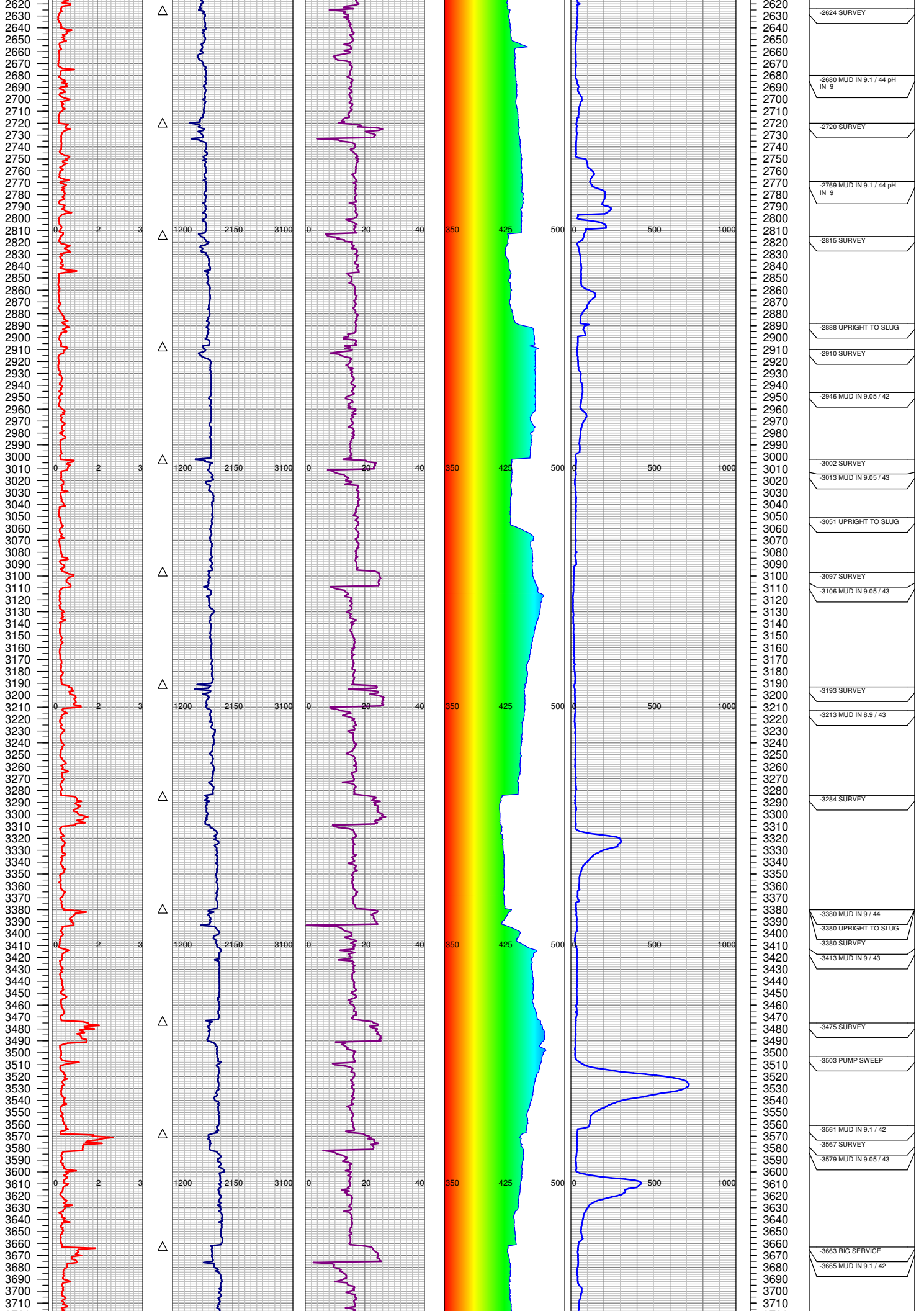
GM 432-28

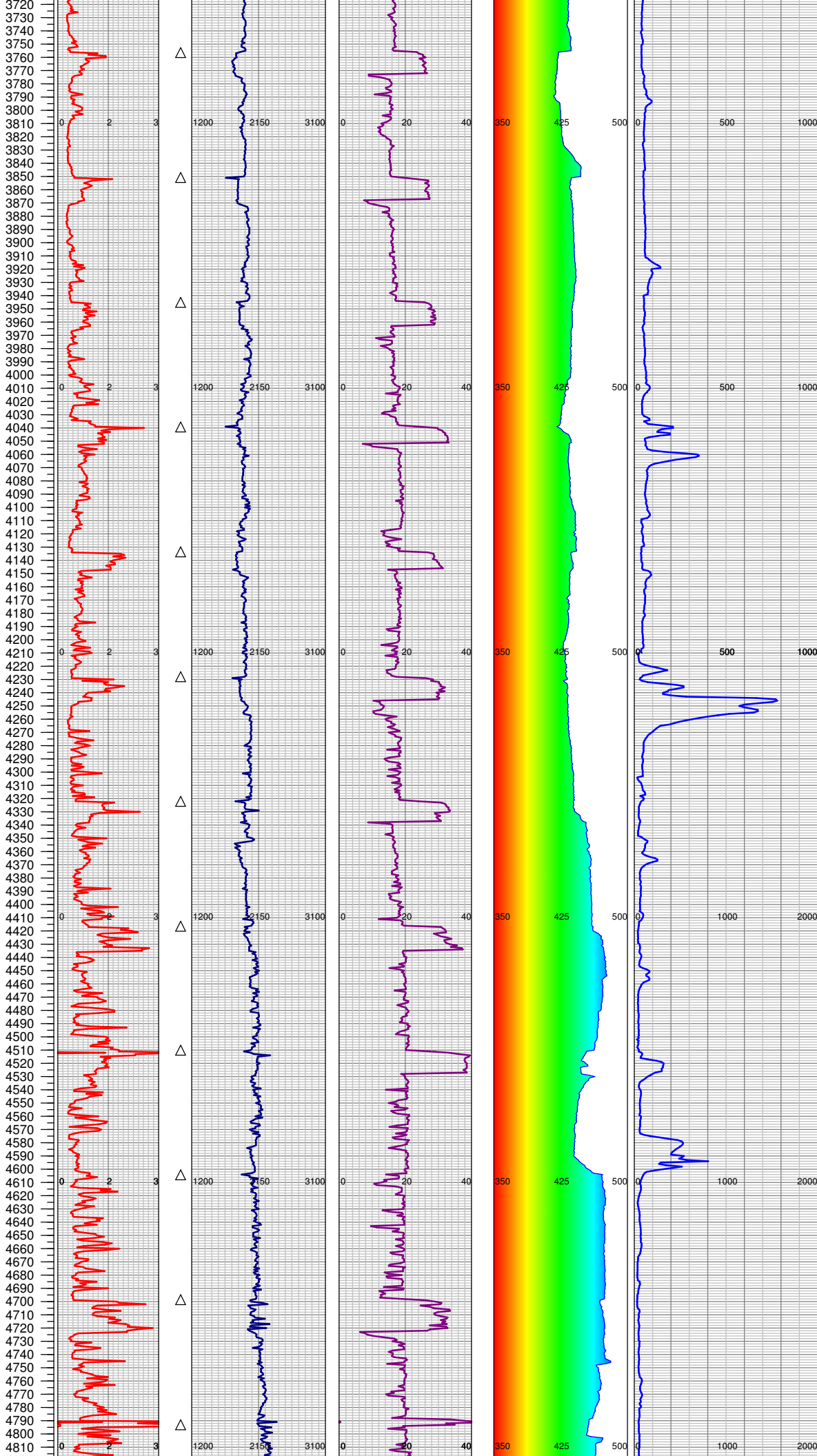
COUNTY: GARFIELD
STATE: COLORADO
DRILLING FLUID: LSND
LOGGER: LUKE DAVENPORT

GROUND ELEVATION: 5476'
KELLY BUSHING: 5500'
TVD VS. MD = -503'
DEPTHS LOGGED: 1850'-7317'

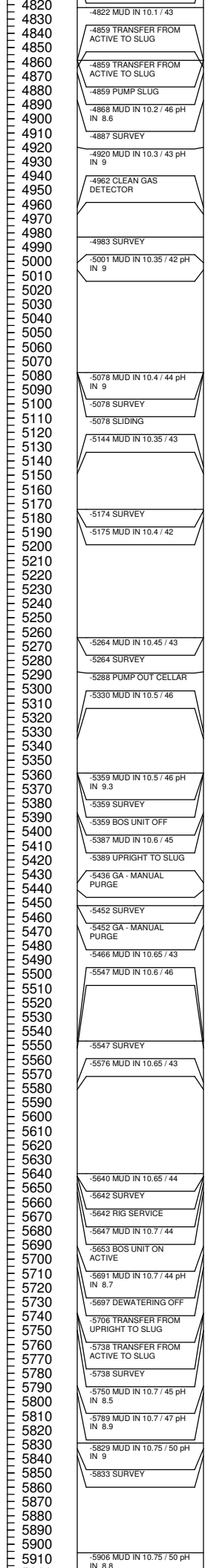
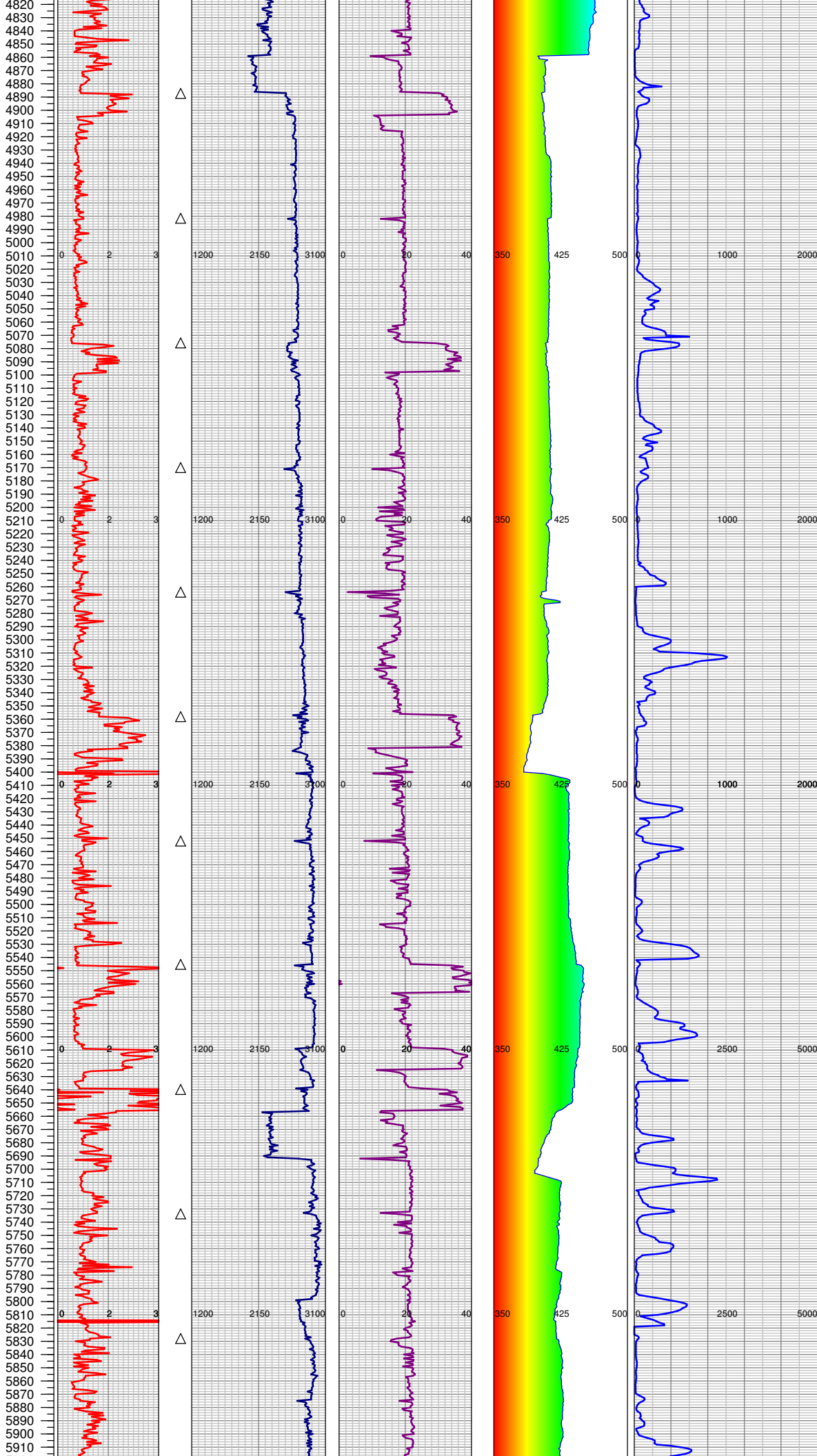
SPUD DATE: 1/8/2015
FGS BEGIN LOGGING: 1/11/2015
TD DATE: 1/16/2015
DATES LOGGED: 1/11/2015 - 1/16/2015

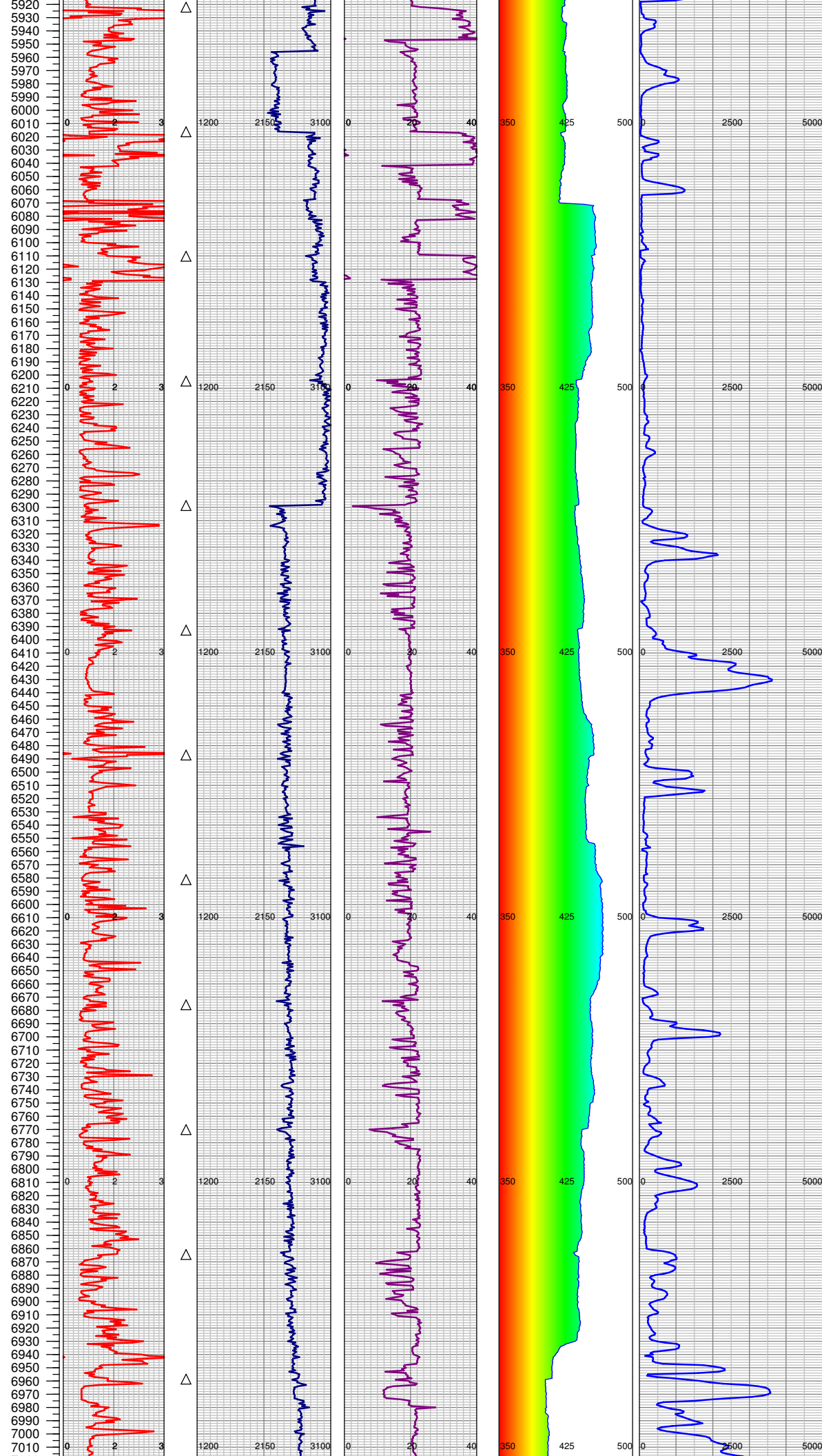




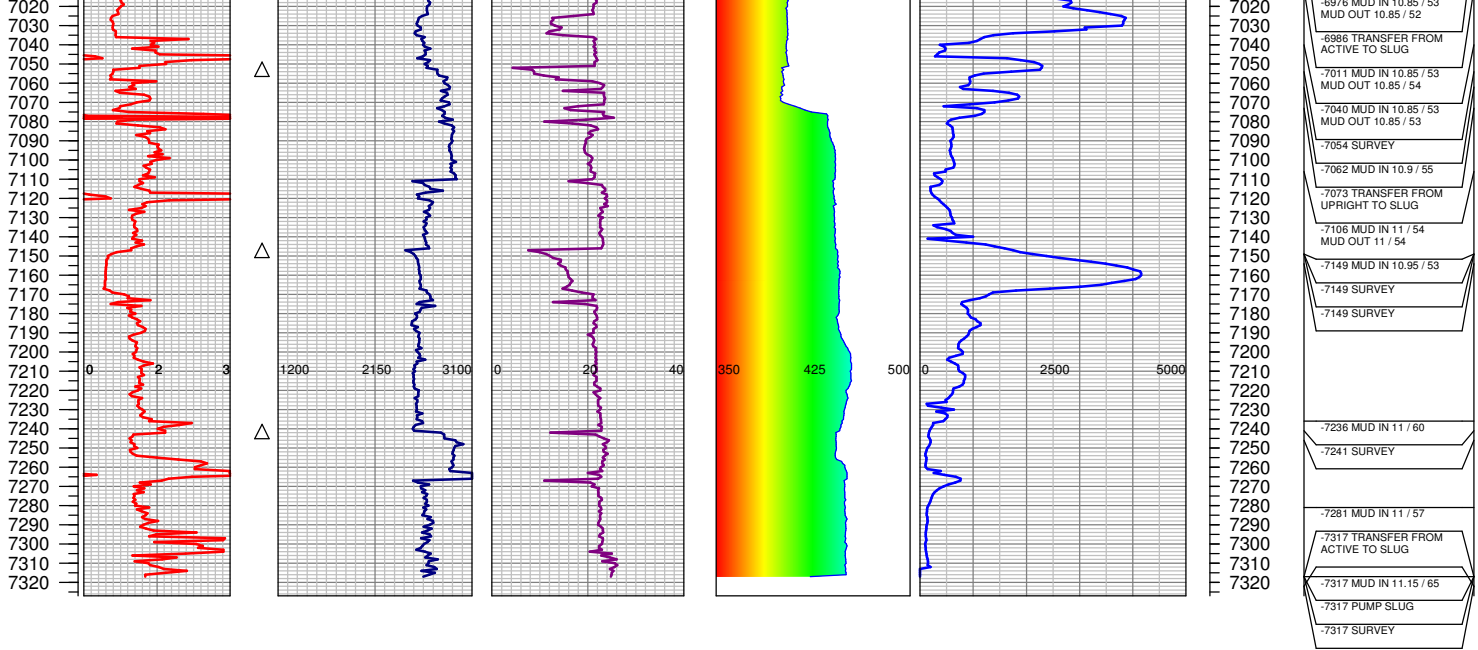


3720	
3730	
3740	
3750	
3760	-3756 SURVEY
3770	-3760 MUD IN 9.1 / 42
3780	
3790	
3800	-3795 UPRIGHT TO SLUG
3810	
3820	
3830	
3840	
3850	
3860	-3852 SURVEY
3870	-3856 MUD IN 9.2 / 38 pH
3880	IN 8.8 MUD OUT 9.2 / 38
3890	
3900	
3910	
3920	
3930	
3940	
3950	-3947 SURVEY
3960	
3970	-3965 MUD IN 9.2 / 38 pH
3980	IN 8.9
3990	
4000	
4010	
4020	
4030	
4040	-4043 MUD IN 9.15 / 41 pH
4050	IN 8.8
4060	-4043 SURVEY
4070	
4080	
4090	
4100	-4095 MUD IN 9.1 / 40 pH
4110	IN 8.7
4120	-4138 SURVEY
4130	
4140	
4150	-4146 MUD IN 9.2 / 40 pH
4160	IN 8.8
4170	
4180	-4218 BOS IS OFF
4190	
4200	
4210	
4220	
4230	-4233 MUD IN 9.25 / 41 pH
4240	IN 9
4250	-4233 SURVEY
4260	
4270	
4280	
4290	
4300	
4310	
4320	-4322 MUD IN 9.3 / 40 pH
4330	IN 8.9
4340	-4322 SURVEY
4350	
4360	
4370	
4380	
4390	-4387 MUD IN 9.4 / 42
4400	MUD OUT 9.4 / 42
4410	-4404 MUD IN 9.5 / 42
4420	MUD OUT 9.5 / 42 pH OUT
4430	8.8
4440	-4416 SURVEY
4450	-4417 MUD IN 9.5 / 42 pH
4460	IN 8.8
4470	
4480	-4468 MUD IN 9.6 / 40
4490	MUD OUT 9.6 / 40 pH OUT
4500	9
4510	-4511 SURVEY
4520	-4511 SURVEY
4530	-4511 BOS DEWATERING
4540	ON ACTIVE
4550	-4513 MUD IN 9.6 / 40
4560	
4570	-4558 MUD IN 9.7 / 41 pH
4580	IN 9.1
4590	-4573 BOS TO ACTIVE
4600	-4574 BOS UNIT OFF
4610	-4603 MUD IN 9.7 / 42
4620	-4606 SURVEY
4630	-4606 BOS TRANSFER
4640	COMPLETE
4650	-4627 MUD IN 9.7 / 42
4660	
4670	
4680	
4690	
4700	-4698 SURVEY
4710	-4700 MUD IN 9.75 / 42
4720	
4730	-4726 PUMP SWEEP
4740	-4735 MUD IN 9.8 / 43
4750	
4760	
4770	
4780	
4790	
4800	-4794 MUD IN 10 / 43
4810	-4794 SURVEY





5920	-5922 SURVEY
5930	-5927 MUD IN 10.8 / 49 pH IN 8.8
5940	
5950	-5942 BOS ON ACTIVE
5960	
5970	-5949 MUD IN 10.8 / 47 pH IN 8.6
5980	
5990	-5999 DEWATER OFF BOS OFF ACTIVE
6000	
6010	-6002 MUD IN 10.8 / 47 pH IN 9.1
6020	-6017 SURVEY
6030	-6030 MUD IN 10.7 / 49 pH IN 9.2
6040	
6050	-6046 PUMP SWEEP
6060	
6070	-6067 MUD IN 10.7 / 49 pH IN 9.2
6080	-6067 SURVEY
6090	-6067 SLIDING
6100	
6110	-6070 TRANSFER FROM UPRIGHT TO SLUG
6120	
6130	-6110 SURVEY
6140	-6114 MUD IN 10.75 / 49
6150	
6160	-6129 PUMP SWEEP
6170	-6174 MUD IN 10.75 / 48
6180	
6190	
6200	
6210	-6204 SURVEY
6220	-6212 GA - MANUAL PURGE
6230	
6240	
6250	
6260	
6270	-6269 MUD IN 10.8 / 51
6280	-6300 SURVEY
6290	
6300	
6310	
6320	
6330	
6340	
6350	
6360	
6370	
6380	-6372 MUD IN 10.85 / 55 pH IN 9.5
6390	-6395 SURVEY
6400	
6410	
6420	
6430	
6440	
6450	
6460	-6461 MUD IN 10.9 / 53
6470	-6487 RIG SERVICE
6480	
6490	
6500	
6510	-6513 MUD IN 10.95 / 51
6520	-6550 MUD IN 10.85 / 50
6530	
6540	
6550	
6560	-6565 SURVEY
6570	
6580	-6623 MUD IN 10.8 / 48
6590	
6600	
6610	
6620	
6630	
6640	
6650	
6660	
6670	
6680	-6676 SURVEY
6690	-6707 MUD IN 10.9 / 59
6700	
6710	-6709 MUD IN 11 / 50
6720	-6741 MUD IN 10.8 / 50
6730	
6740	
6750	-6748 MUD IN 10.75 / 52
6760	-6770 MUD IN 10.8 / 52
6770	-6770 SURVEY
6780	
6790	-6839 MUD IN 10.8 / 51
6800	
6810	
6820	
6830	
6840	
6850	
6860	
6870	-6865 MUD IN 10.9 / 57
6880	-6865 MUD IN 10.75 / MUD OUT 10
6890	-6865 SURVEY
6900	-6880 PUMP SWEEP
6910	
6920	-6921 BOS ON ACTIVE
6930	-6924 MUD IN 10.75 / 55
6940	-6929 TRANSFER 15BBLs TO BOSS
6950	
6960	-6952 MUD IN 10.75 / 70
6970	-6958 MUD IN 11.1 / 55
6980	-6958 SURVEY
6990	-6958 BOS OFF ACTIVE
7000	
7010	



TOTAL DEPTH = 7317'

FGS RELEASED: 1/16/2015