



DDC  
3222 North 6th Mile Road  
Casper WY 82604

**RM-141343**

1":100' - MD

1/2/2015 3:04:56 PM

**Oper. Company:** Noble Energy Inc

**Country:** USA

**State / Province:** Colorado

**County / Parish:** Weld

**Started:** 12/29/2014 06:00 PM

**API/UWI:** 05-123-39817

**Field:** Wattenburg

**Well:** Upchurch State LD02-77-1BHN

**Rig:** H&P 326

**Ended:** 01/02/2015 02:30 PM

### Personnel

**Day Hand:** Bob Kubistek  
**Night Hand:** Chris Myers  
**Comp. Emp:** Bob Kubistek

### Location

**Latitude:** 40° 46' 29.928 N  
**Longitude:** 103° 50' 7.260 W  
**Elev. GL:** 4742  
**Elev. DF:** 30  
**Elev. KB:** 4772

### Hole Data

Size	From	To
13 3/4	0	1177
8 3/4	1177	6030
6 1/8	6030	9688

### Casing Data

Size	From	To
9 5/8	0	1177
7	0	6030
4 1/2	0	9688

### Bit Sizes

Size	From	To
13 3/4	0	1177
8 3/4	1177	6030
6 1/8	6030	9688

### Mud Data

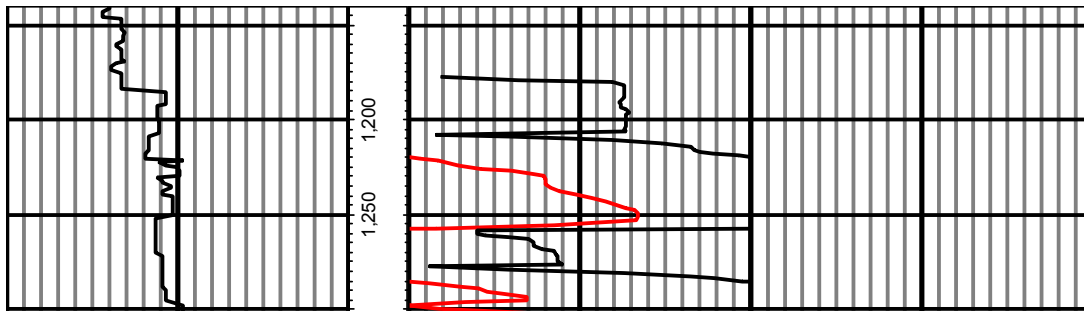
Type	Weight	Density	Viscosity	Rm	Rmf	Rmc	From	To
LSND	10.5		37				0	9688

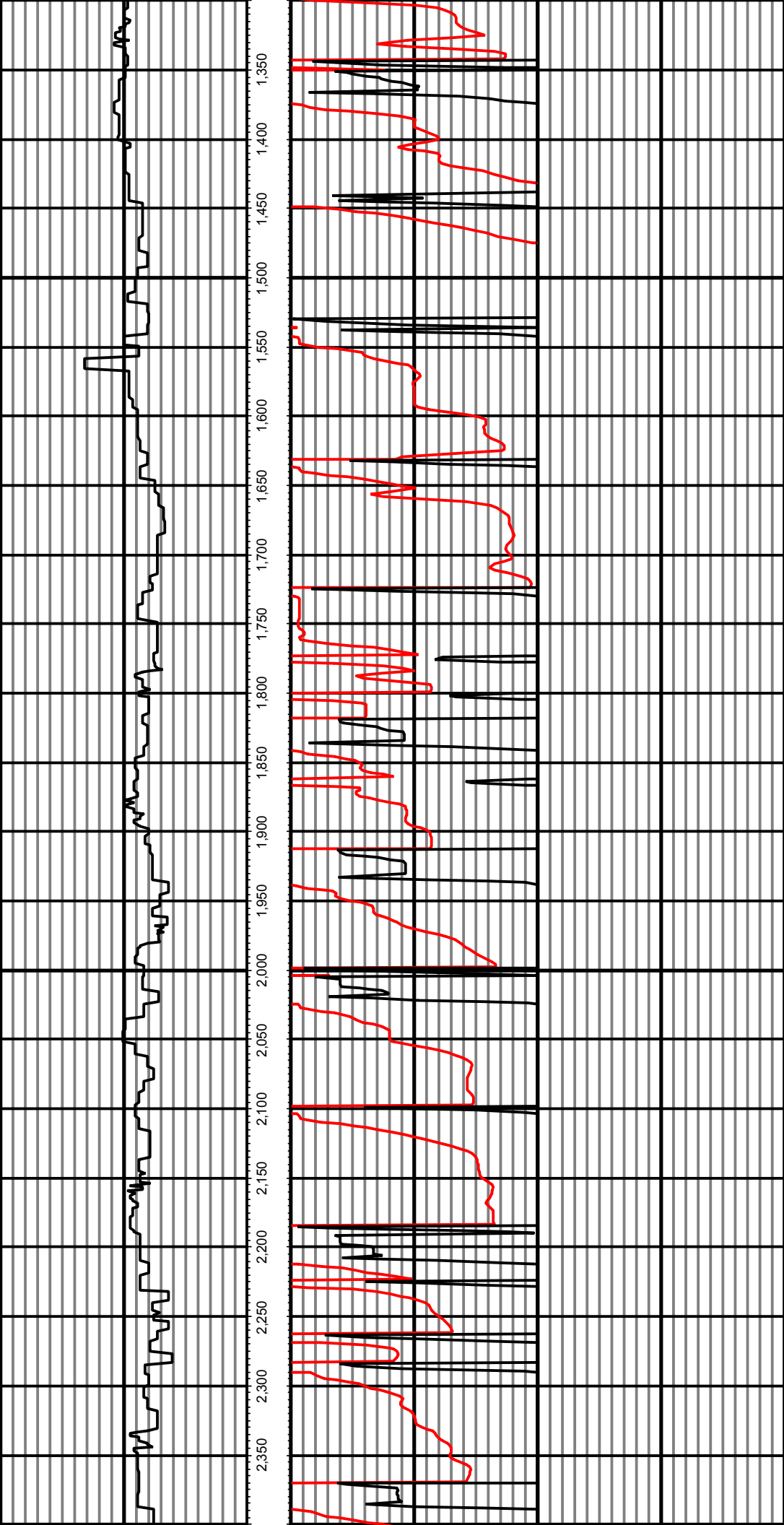
### Tool Run Data

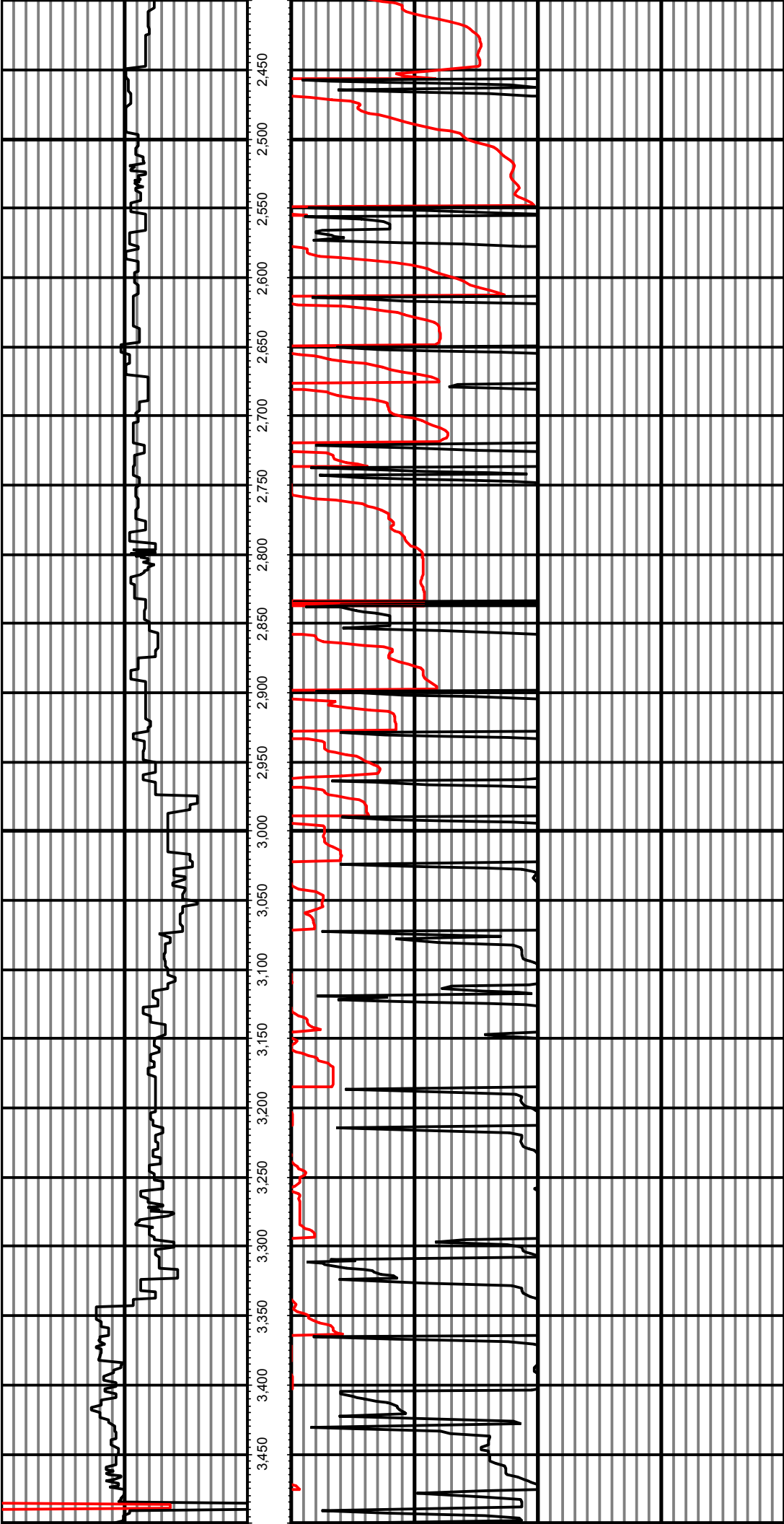
Serial Number	Gamma Offset	Resist. Offset	Start Time	Start Depth	End Time	End Depth
205	37	0	12/29/2014 6:00:41 PM	1177	12/30/2015 6:30:41 PM	6030
205	36	0	1/1/2015 9:00:32 AM	6030	1/2/2015 2:30:32 PM	9688

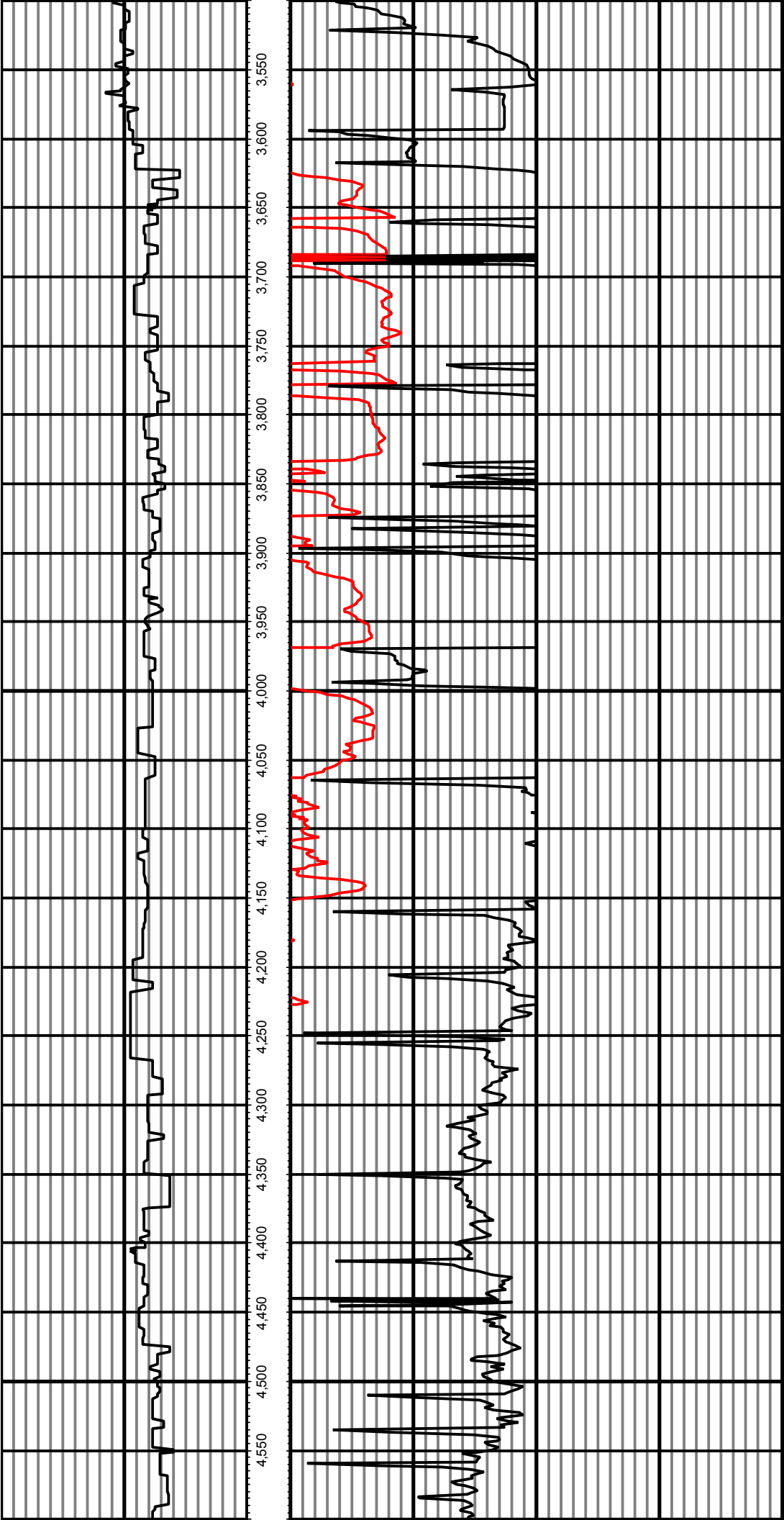
*All interpretations are opinions based on inferences from electrical or other measurements and we cannot and do not guarantee the accuracy or correctness of any interpretation, and we shall not except in the case of gross or willful negligence on our part, be liable or responsible for any loss, cost damages or expenses incurred or sustained by anyone resulting from an interpretation made by any of our officers, agents, or employees.*

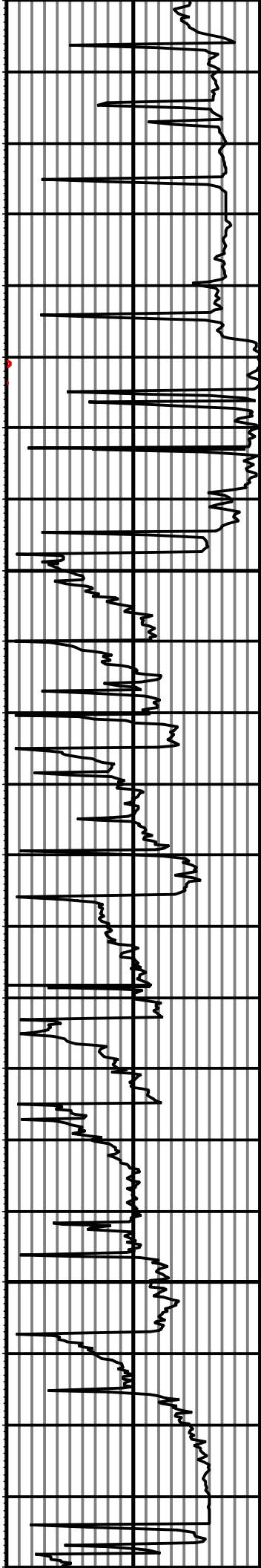
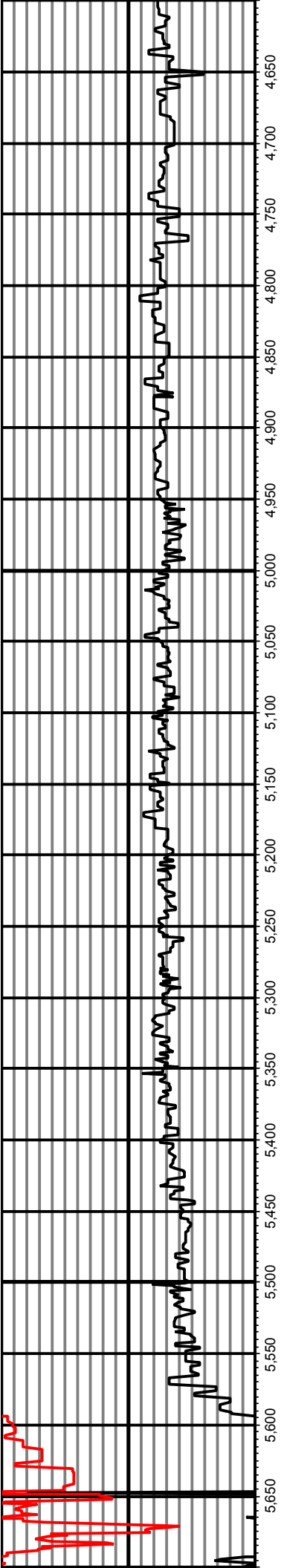
0.00 GAMMA COUNTS(mG) 150.00 MD 0.00 ROP(FT/HR) 750.00  
150.00 2 300.00 FT 750.00 2 1,500.00

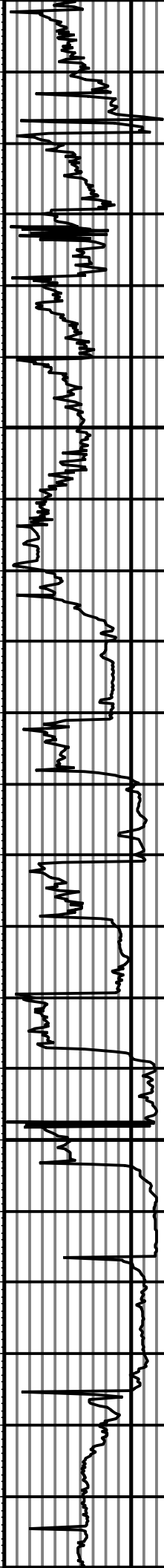
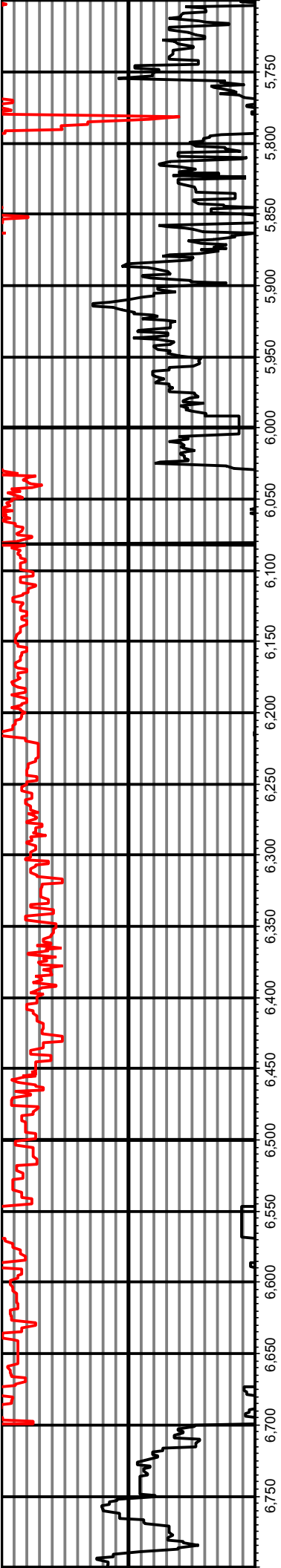


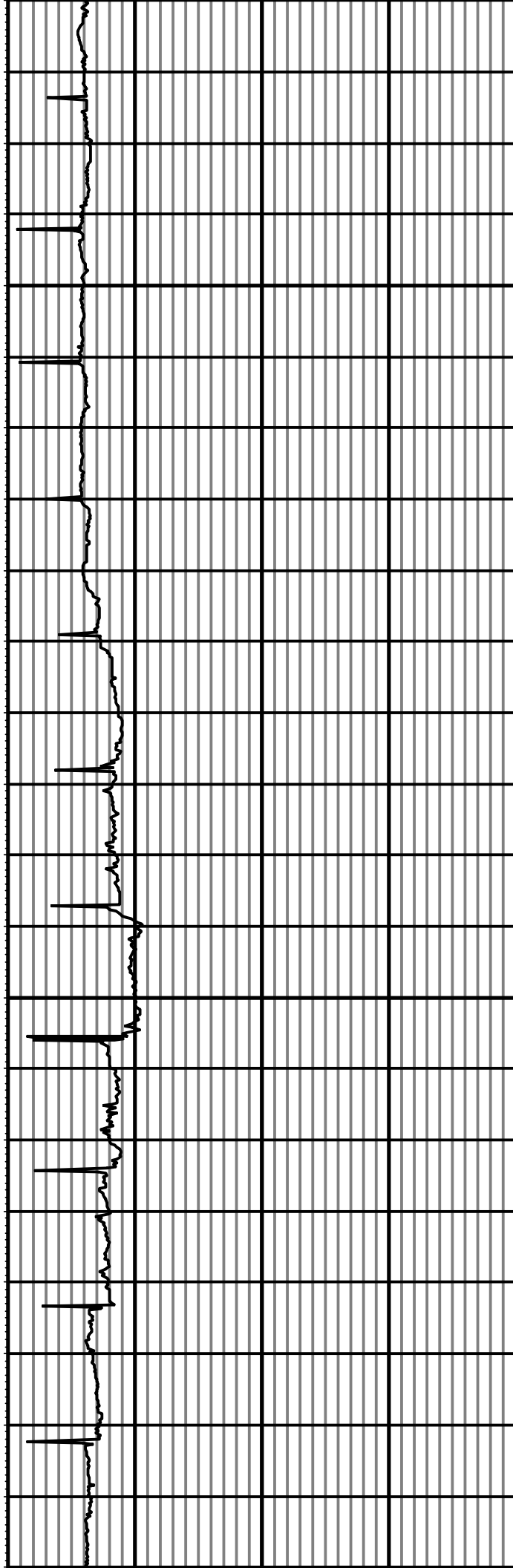
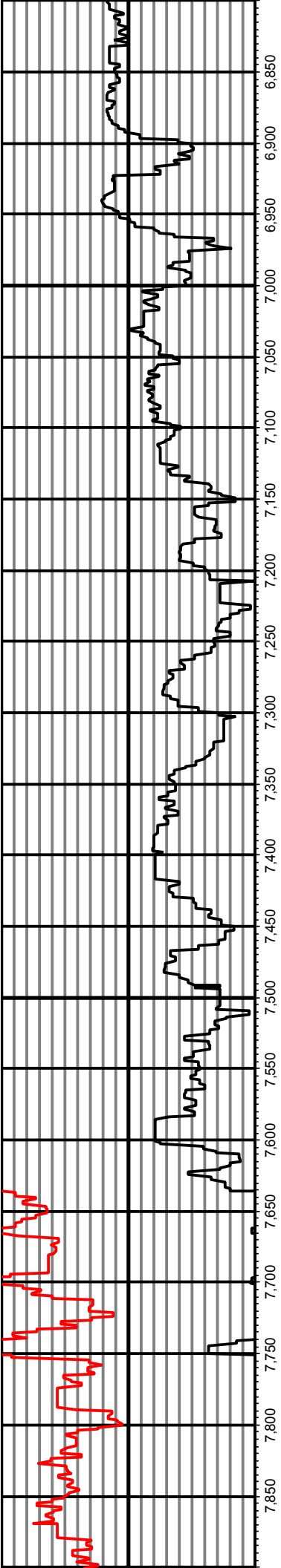


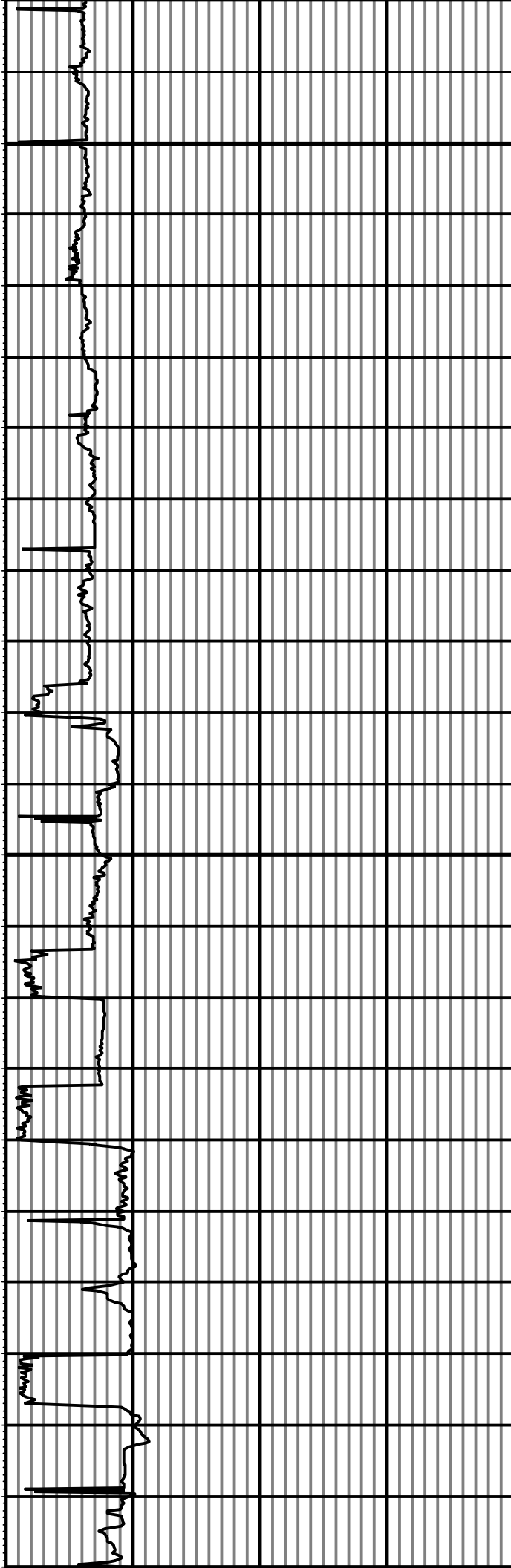
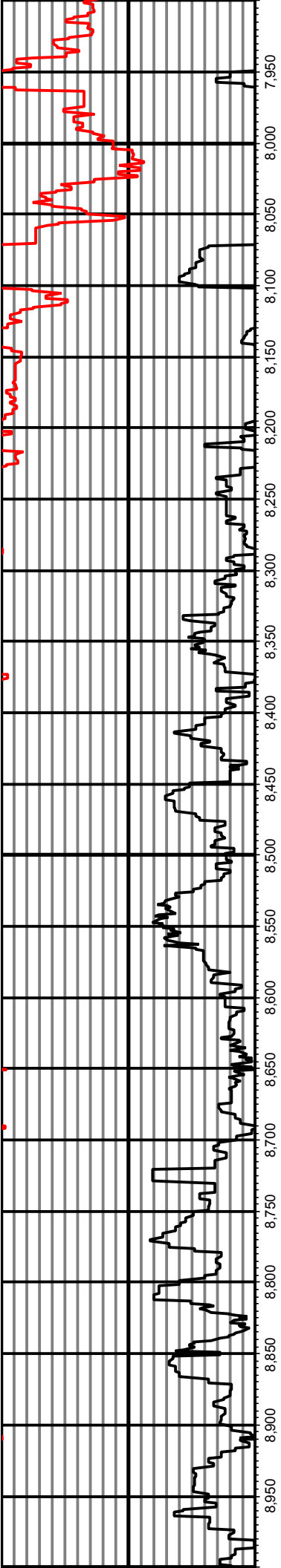
















0.00 GAMMA COUNTS(mG) 150.00 MD 0.00 ROP(FT/HR) 750.00  
150.00 2 300.00 FT 750.00 2 1,500.00