



7136 South Yale Avenue, Suite 414

Tulsa, Oklahoma 74136-6378

phone 918.925.9739

fax 866.534.4559

WWW.HZMUD.COM/25

**Customer Information**

**Operator:** Noble Energy Inc.  
1625 Broadway  
Suite 2200  
Denver, Colorado 80202

**Geologist:** Holly Duncan  
Noble Energy Inc.

**Mud Logging Details**

**Logger:** Joe Klumpstra &  
Zack St.Clair  
**Log Interval:** 2500' MD to 5700' MD  
**Start Date:** January 14, 2015  
**Release Date:** January 18, 2015

**Well Information**

**Well Name:** Tripucka State LD02-75HN

**Location:** 2-T9N-R58W  
615' FSL, 2020' FEL

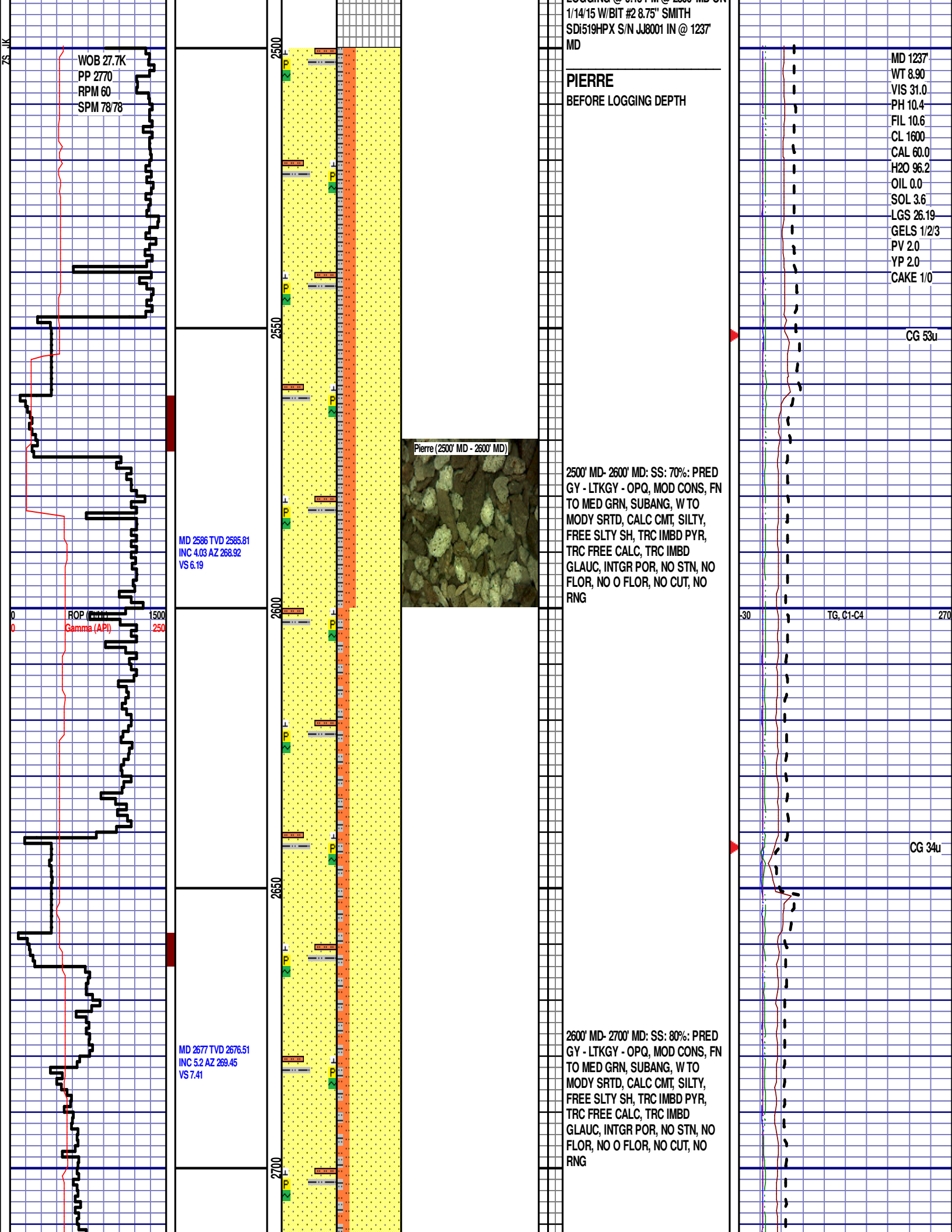
**County:** Weld  
**State:** Colorado

**Drilling Rig:** H&P 321  
**Total Depth:** 9671' MD  
**TD Date:** January 18, 2015  
**Formation:** Niobrara B Chalk  
**KB Elevation:** 4707'  
**GR Elevation:** 4677'  
**API Number:** 05-123-39879-0000

**ROCK TYPES**

	<b>Siltysh</b>		<b>Congl</b>		<b>Mrlst</b>		<b>Till</b>		<b>sdygw</b>
	<b>Anhy</b>		<b>Dol</b>		<b>Salt</b>		<b>gw</b>		<b>hvycrbsh</b>
	<b>Bent</b>		<b>Gyp</b>		<b>Shale</b>		<b>lmywash</b>		<b>nosmpl</b>
	<b>Brec</b>		<b>Igne</b>		<b>Shcol</b>		<b>ogw</b>		<b>Lsdetrst</b>
	<b>Cht</b>		<b>Lmst</b>		<b>Shgy</b>		<b>olmywash</b>		<b>sltst</b>
	<b>Clyst</b>		<b>Meta</b>		<b>Sltst</b>		<b>oshly gw</b>		<b>sdy sh</b>
	<b>Coal</b>		<b>Chk</b>		<b>Ss</b>		<b>shly gw</b>		

ROP (Ft/Hr) Gamma (API)	Drill Depth v. Time	Survey Data	Depth	Lithology	Lithology Percentages	Sample Photographs	Porosity	Geological Description	TG (1-8) C1 (units) C2 (units) C3 (units) C4 (units)	Total Gas, C1-C4
1500 250			24					NOBLE ENERGY INC. TRIPUCKA STATE LD02-75HN 2-T9N-R58W 615' FSL, 2020' FEL WELD COUNTY, CO H&P 321 LOGGERS: JOE KLUMPSTRA ZACK ST. CLAIR CALLED OUT BY COMPANY MAN @ 5:30 AM ON 1/14/15. COMMENCED LOGGING @ 9:15 PM @ 2500' MD ON	30 TG, C1-C4 270	
<p>SLIDE=RED ROTATE=WHITE</p> <p>ROP SCALE: 0 TO 1500 (FT/HR)</p> <p>GAMMA SCALE: 0 TO 250 (GAMMA DATA AS RECEIVED)</p> <p>CONNECTIONS ARE MARKED WITH RED TRIANGLES</p> <p>GAS SCALE: 30u TO 270u (30 UNITS/DIVISION)</p> <p>DRILLING ON WATER-BASED MUD</p>										

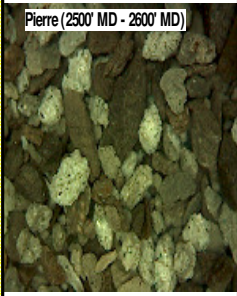


1/14/15 W/BIT #2 8.75" SMITH  
SDI519HPX S/N JJ8001 IN @ 1237  
MD

**PIERRE**  
BEFORE LOGGING DEPTH

MD 1237  
WT 8.90  
VIS 31.0  
PH 10.4  
FIL 10.6  
CL 1600  
CAL 60.0  
H2O 96.2  
OIL 0.0  
SOL 3.6  
LGS 26.19  
GELS 1/23  
PV 2.0  
YP 2.0  
CAKE 1/0

CG 53u



Pierre (2500' MD - 2600' MD)

2500' MD- 2600' MD: SS: 70%: PRED  
GY - LTKGY - OPQ, MOD CONS, FN  
TO MED GRN, SUBANG, W TO  
MODY SRTD, CALC CMT, SILTY,  
FREE SLTY SH, TRC IMBD PYR,  
TRC FREE CALC, TRC IMBD  
GLAUC, INTGR POR, NO STN, NO  
FLOR, NO O FLOR, NO CUT, NO  
RNG

30 TG, C1-C4 270

CG 34u

2600' MD- 2700' MD: SS: 80%: PRED  
GY - LTKGY - OPQ, MOD CONS, FN  
TO MED GRN, SUBANG, W TO  
MODY SRTD, CALC CMT, SILTY,  
FREE SLTY SH, TRC IMBD PYR,  
TRC FREE CALC, TRC IMBD  
GLAUC, INTGR POR, NO STN, NO  
FLOR, NO O FLOR, NO CUT, NO  
RNG

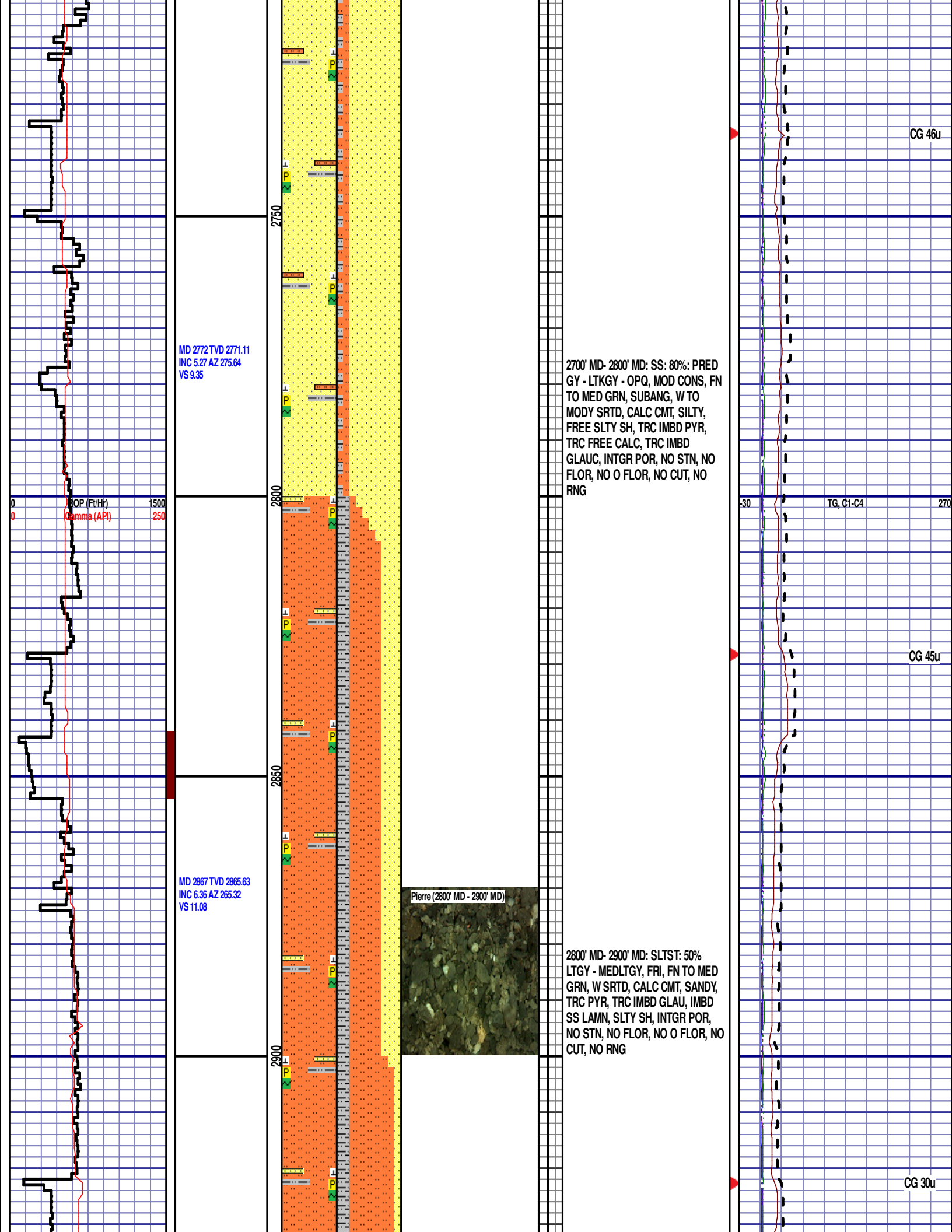
WOB 27.7K  
PP 2770  
RPM 60  
SPM 78/78

MD 2586 TVD 2585.81  
INC 4.03 AZ 268.92  
VS 6.19

ROP (ft/hr)  
Gamma (API)

MD 2677 TVD 2676.51  
INC 5.2 AZ 269.45  
VS 7.41

2500  
2550  
2600  
2650  
2700



MD 2962 TVD 2959.89  
INC 7.86 AZ 269.45  
VS 12.71

2900' MD- 3000' MD: SLTST: 70%  
LTGY - MEDLTGY, FRI, FN TO MED  
GRN, W SRTD, CALC CMT, SANDY,  
TRC PYR, TRC IMBD GLAU, IMBD  
SS LAMN, SLTY SH, INTGR POR,  
NO STN, NO FLOR, NO O FLOR, NO  
CUT, NO RNG

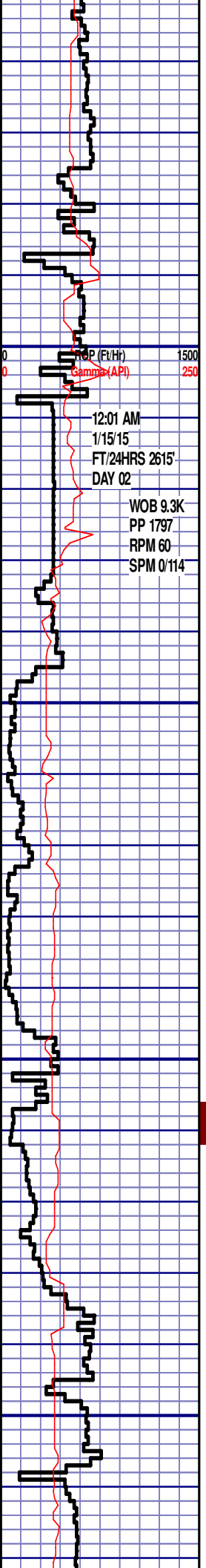
MD 3056 TVD 3052.76  
INC 9.9 AZ 270.94  
VS 15.39

3000' MD- 3100' MD: SS: 60%: PRED  
GY - LTKGY - OPQ, MOD CONS, FN  
TO MED GRN, SUBANG, W TO  
MODY SRTD, CALC CMT, SILTY,  
FREE SLTY SH, TRC IMBD PYR,  
TRC FREE CALC, TRC IMBD  
GLAUC, INTGR POR, NO STN, NO  
FLOR, NO O FLOR, NO CUT, NO  
RNG

CG 31u

CG 35u

MD 3151 TVD 3146.09  
INC 11.59 AZ 270.72  
VS 18.83



ROP (Ft/Hr) 1500  
Gamma (API) 250

12:01 AM  
1/15/15  
FT/24HRS 2615'  
DAY 02

WOB 9.3K  
PP 1797  
RPM 60  
SPM 0/114

MD 3245 TVD 3238.09  
INC 12.09 AZ 268.71  
VS 22.21

MD 3340 TVD 3330.82  
INC 13.03 AZ 267.89  
VS 25.32



3100' MD- 3200' MD: SS: 70%: PRED  
GY - LTKGY - OPQ, MOD CONS, FN  
TO MED GRN, SUBANG, W TO  
MODY SRTD, CALC CMT, SILTY,  
FREE SLTY SH, TRC IMBD PYR,  
TRC FREE CALC, TRC IMBD  
GLAUC, INTGR POR, NO STN, NO  
FLOR, NO O FLOR, NO CUT, NO  
RNG



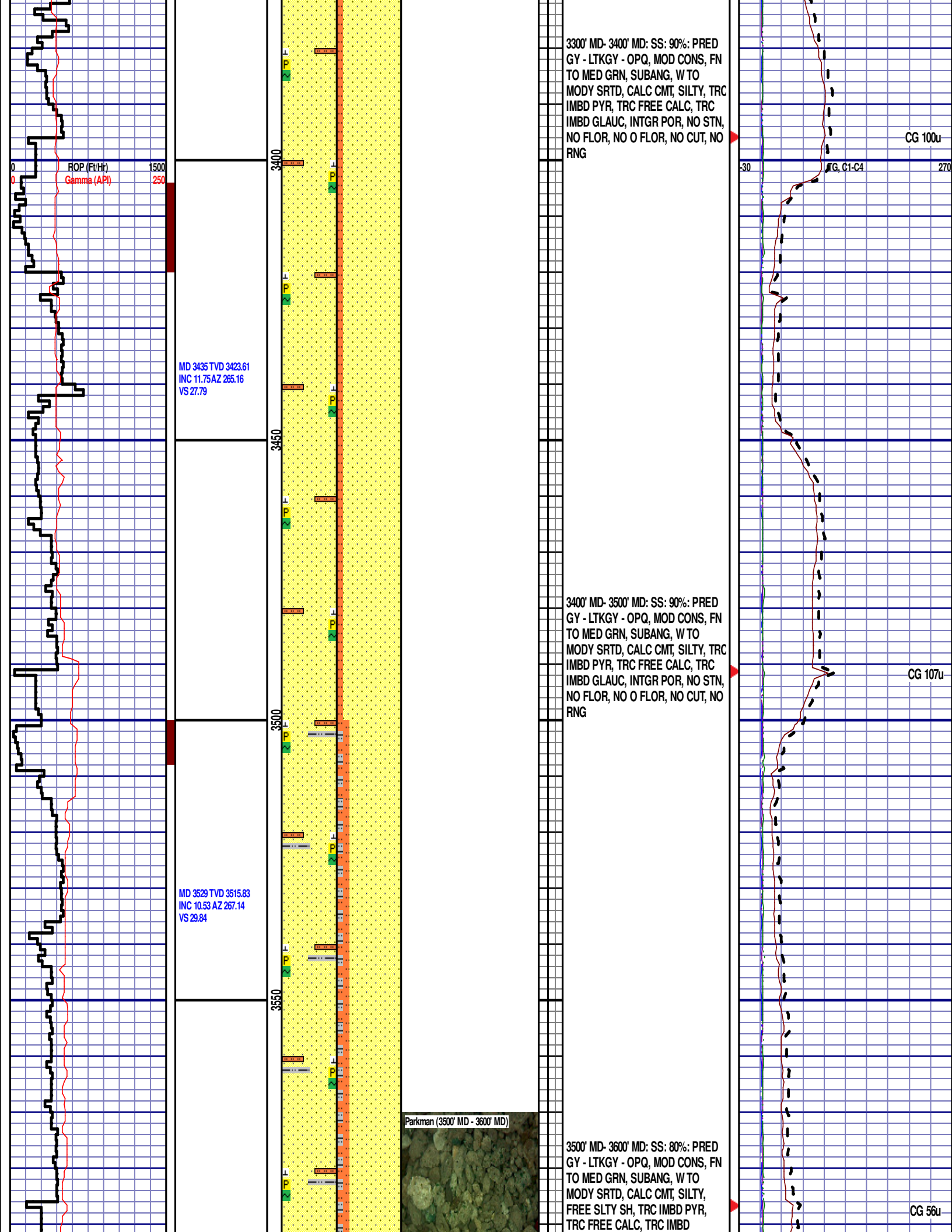
3200' MD- 3300' MD: SS: 90%: PRED  
GY - LTKGY - OPQ, MOD CONS, FN  
TO MED GRN, SUBANG, W TO  
MODY SRTD, CALC CMT, SILTY, TRC  
IMBD PYR, TRC FREE CALC, TRC  
IMBD GLAUC, INTGR POR, NO STN,  
NO FLOR, NO O FLOR, NO CUT, NO  
RNG

**PARKMAN**  
3256' MD 3249' TVD

30 TG, C1-C4 270

CG 17u

CG 61u



3300' MD- 3400' MD: SS: 90%: PRED  
 GY - LTKGY - OPQ, MOD CONS, FN  
 TO MED GRN, SUBANG, W TO  
 MODY SRTD, CALC CMT, SILTY, TRC  
 IMBD PYR, TRC FREE CALC, TRC  
 IMBD GLAUC, INTGR POR, NO STN,  
 NO FLOR, NO O FLOR, NO CUT, NO  
 RNG

CG 100u

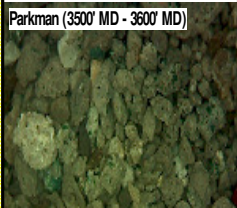
MD 3435 TVD 3423.61  
 INC 11.75 AZ 265.16  
 VS 27.79

3400' MD- 3500' MD: SS: 90%: PRED  
 GY - LTKGY - OPQ, MOD CONS, FN  
 TO MED GRN, SUBANG, W TO  
 MODY SRTD, CALC CMT, SILTY, TRC  
 IMBD PYR, TRC FREE CALC, TRC  
 IMBD GLAUC, INTGR POR, NO STN,  
 NO FLOR, NO O FLOR, NO CUT, NO  
 RNG

CG 107u

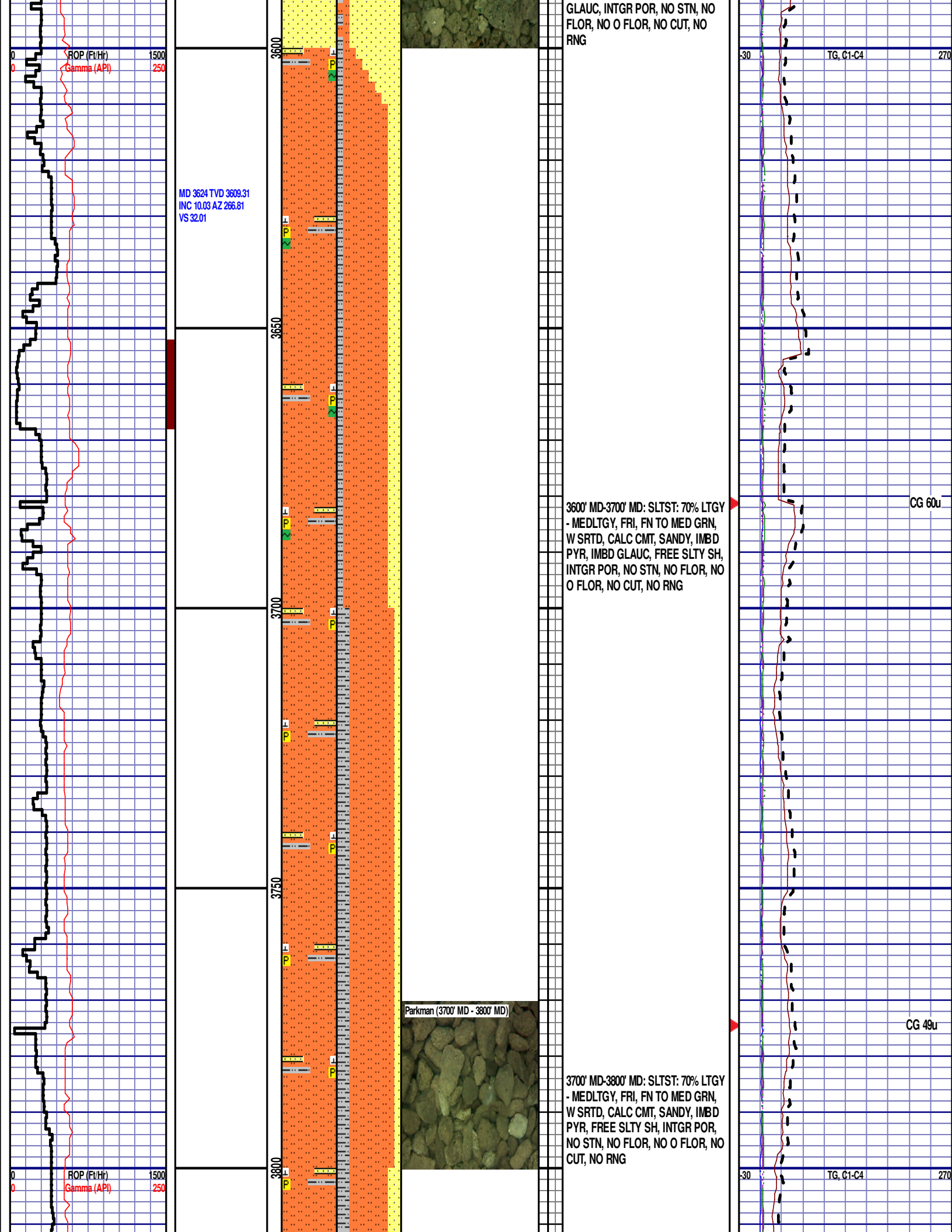
MD 3529 TVD 3515.83  
 INC 10.53 AZ 267.14  
 VS 29.84

Parkman (3500' MD - 3600' MD)



3500' MD- 3600' MD: SS: 80%: PRED  
 GY - LTKGY - OPQ, MOD CONS, FN  
 TO MED GRN, SUBANG, W TO  
 MODY SRTD, CALC CMT, SILTY,  
 FREE SLTY SH, TRC IMBD PYR,  
 TRC FREE CALC, TRC IMBD

CG 56u



ROP (Ft/Hr) 1500  
Gamma (API) 250

MD 3624 TVD 3609.31  
INC 10.03 AZ 266.81  
VS 32.01

3600  
3650  
3700  
3750  
3800

Parkman (3700' MD - 3800' MD)

3600' MD-3700' MD: SLTST: 70% LTGY  
- MEDLTGY, FRI, FN TO MED GRN,  
W SRTD, CALC CMT, SANDY, IMBD  
PYR, IMBD GLAUC, FREE SLTY SH,  
INTGR POR, NO STN, NO FLOR, NO  
O FLOR, NO CUT, NO RNG

3700' MD-3800' MD: SLTST: 70% LTGY  
- MEDLTGY, FRI, FN TO MED GRN,  
W SRTD, CALC CMT, SANDY, IMBD  
PYR, FREE SLTY SH, INTGR POR,  
NO STN, NO FLOR, NO O FLOR, NO  
CUT, NO RNG

TG, C1-C4

CG 60u

CG 49u

TG, C1-C4

270

MD 3812 TVD 3794.89  
INC 8.34 AZ 269.59  
VS 36.42

WOB 5.2K  
PP 1559  
RPM 60  
SPM 0/114

MD 3907 TVD 3888.72  
INC 9.66 AZ 271.09  
VS 39.2

MD 4001 TVD 3981.13  
INC 11.43 AZ 272.91  
VS 42.91

**SUSSEX**  
3842' MD 3825' TVD



3800' MD-3900' MD: SLTST: 60% LTGY  
- MEDLTGY, FRI, FN TO MED GRN,  
W SRTD, CALC CMT, SANDY, IMBD  
PYR, FREE SLTY SH, INTGR POR,  
NO STN, NO FLOR, NO O FLOR, NO  
CUT, NO RNG

3900' MD-4000' MD: SLTST: 80% LTGY  
- MEDLTGY, FRI, FN TO MED GRN,  
W SRTD, CALC CMT, SANDY, IMBD  
PYR, FREE SLTY SH, INTGR POR,  
NO STN, NO FLOR, NO O FLOR, NO  
CUT, NO RNG

MD 3841'  
WT 8.85  
VIS 32.0  
PH 11.8  
FIL 29.0  
CL 1800  
CAL 40.0  
H2O 96.4  
OIL 0.0  
SOL 3.3  
LGS 25.12  
GELS 3/6/9  
PV 2.0  
YP 4.0  
CAKE 2/0

CG 51u

CG 59u

TG, C1-C4

ROP (Ft/Hr)  
Gamma (API)

1500  
250

30

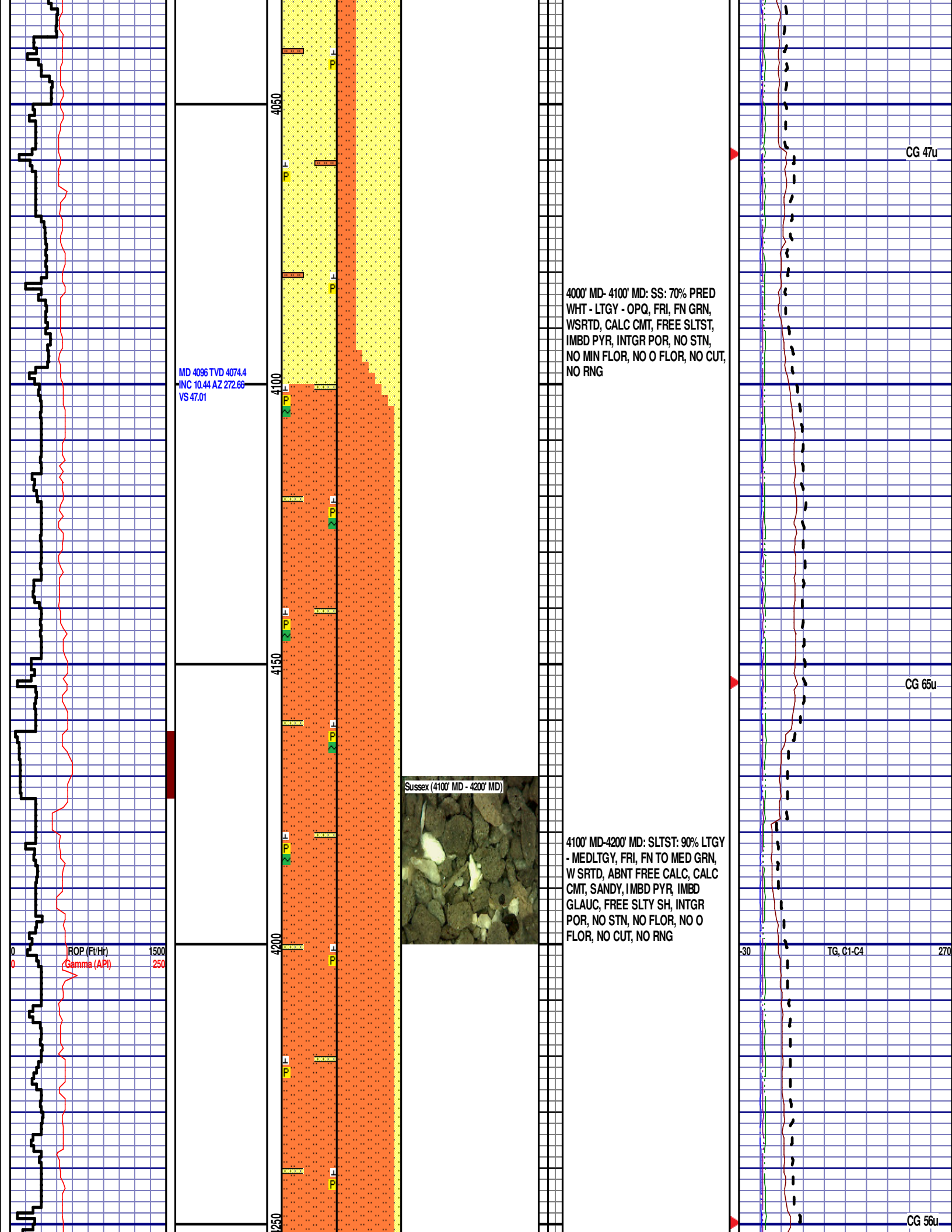
270

3850

3900

3950

4000

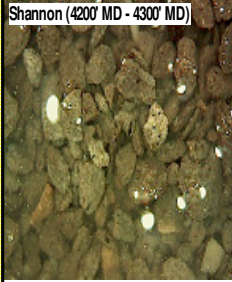


MD 4285 TVD 4259.86  
INC 11.76 AZ 270.98  
VS 54.67

MD 4380 TVD 4352.97  
INC 11.16 AZ 271.46  
VS 58.47

WOB 5.5K  
PP 1893  
RPM 60  
SPM 0/114

ROP (Ft/Hr) 1500  
Gamma (API) 250



### SHANNON

4284' MD 4259' TVD

4200' MD-4300' MD: SLTST: 90% LTGY  
- MEDLTGY, FRI, FN TO MED GRN,  
W SRTD, CALC CMT, SANDY, IMBD  
PYR, INTGR POR, NO STN, NO  
FLOR, NO O FLOR, NO CUT, NO  
RNG

4300' MD-4400' MD: SLTST: 70% LTGY  
- MEDLTGY, FRI, FN TO MED GRN,  
W SRTD, CALC CMT, SANDY, IMBD  
PYR, FREE SLTY SH, INTGR POR,  
NO STN, NO FLOR, NO O FLOR, NO  
CUT, NO RNG

CG 56u

TG, C1-C4

CG 47u

MD 4475 TVD 4446.03  
INC 12.07 AZ 266.93  
VS 61.62

Shannon (4400' MD - 4500' MD)



4400' MD-4500' MD: SLTST: 65% LTGY  
- MEDLTGY, FRI, FN TO MED GRN,  
W SRTD, CALC CMT, SANDY, IMBD  
PYR, FREE SLTY SH, INTGR POR,  
NO STN, NO FLOR, NO O FLOR, NO  
CUT, NO RNG

MD 4569 TVD 4538.16  
INC 10.8 AZ 266.79  
VS 63.97

Shannon (4500' MD - 4600' MD)



4500' MD-4600' MD: SLTST: 75% LTGY  
- MEDLTGY, FRI, FN TO MED GRN,  
W SRTD, CALC CMT, SANDY, IMBD  
PYR, FREE SLTY SH, INTGR POR,  
NO STN, NO FLOR, NO O FLOR,  
SLOW LZY CUT, DIM YLW RNG

ROP (Ft/Hr) 1500  
Gamma (API) 250

### TEEPEE BUTTES

4602' MD 4571' TVD

MD 4664 TVD 4631.54  
INC 10.4 AZ 274.83  
VS 67.33

Teepee Buttes (4600' MD - 4700' MD)

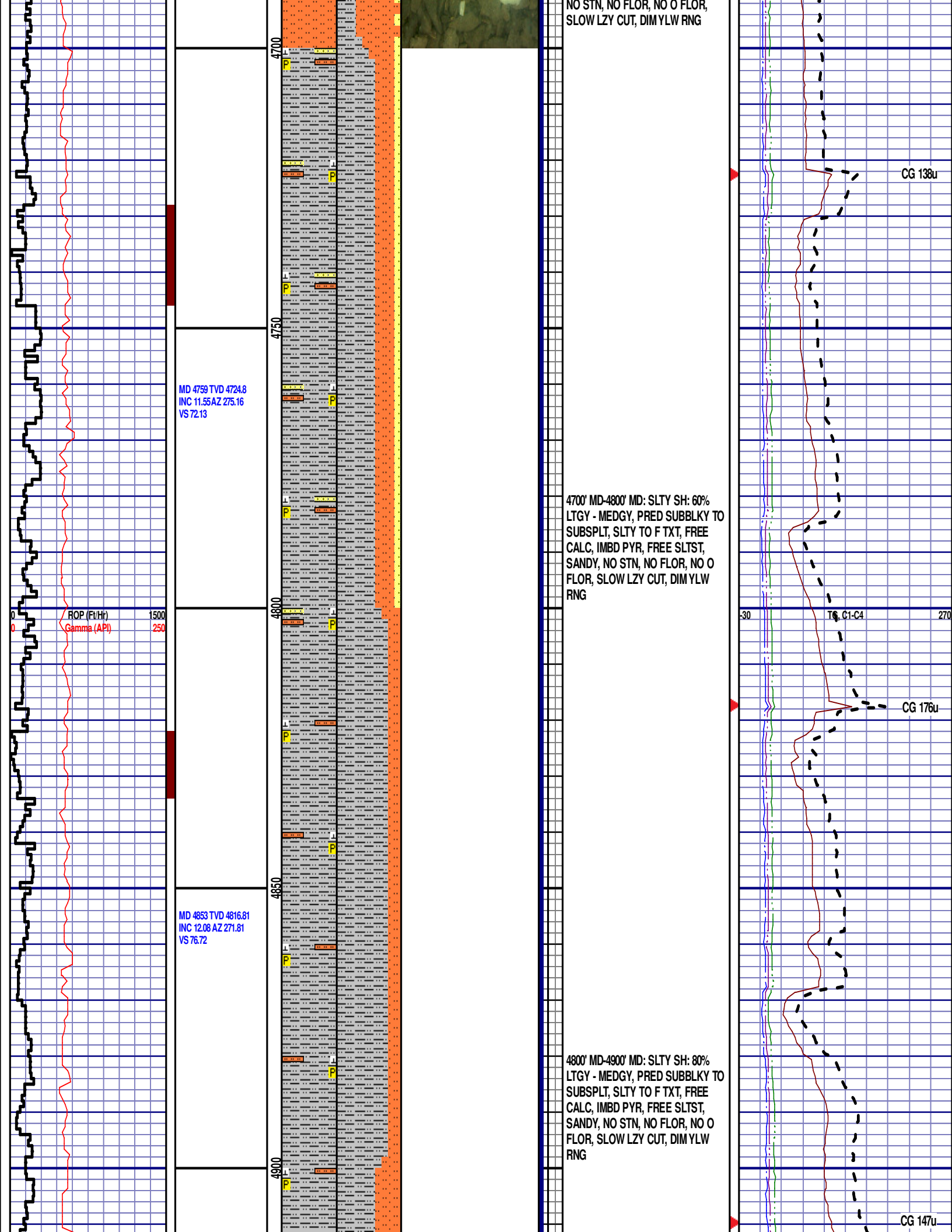


4600' MD-4700' MD: SLTST: 65% LTGY  
- MEDLTGY, FRI, FN TO MED GRN,  
W SRTD, CALC CMT, SANDY, IMBD  
PYR, FREE SLTY SH, INTGR POR,

CG 63u

30 TG, C1-C4 270

CG 91u



NO STN, NO FLOR, NO O FLOR, SLOW LZY CUT, DIM YLW RNG

MD 4759 TVD 4724.8  
INC 11.55 AZ 275.16  
VS 72.13

ROP (Ft/Hr) 1500  
Gamma (API) 250

4700' MD-4800' MD: SLTY SH: 60% LTGY - MEDGY, PRED SUBBLKY TO SUBSPLT, SLTY TO F TXT, FREE CALC, IMBD PYR, FREE SLTST, SANDY, NO STN, NO FLOR, NO O FLOR, SLOW LZY CUT, DIM YLW RNG

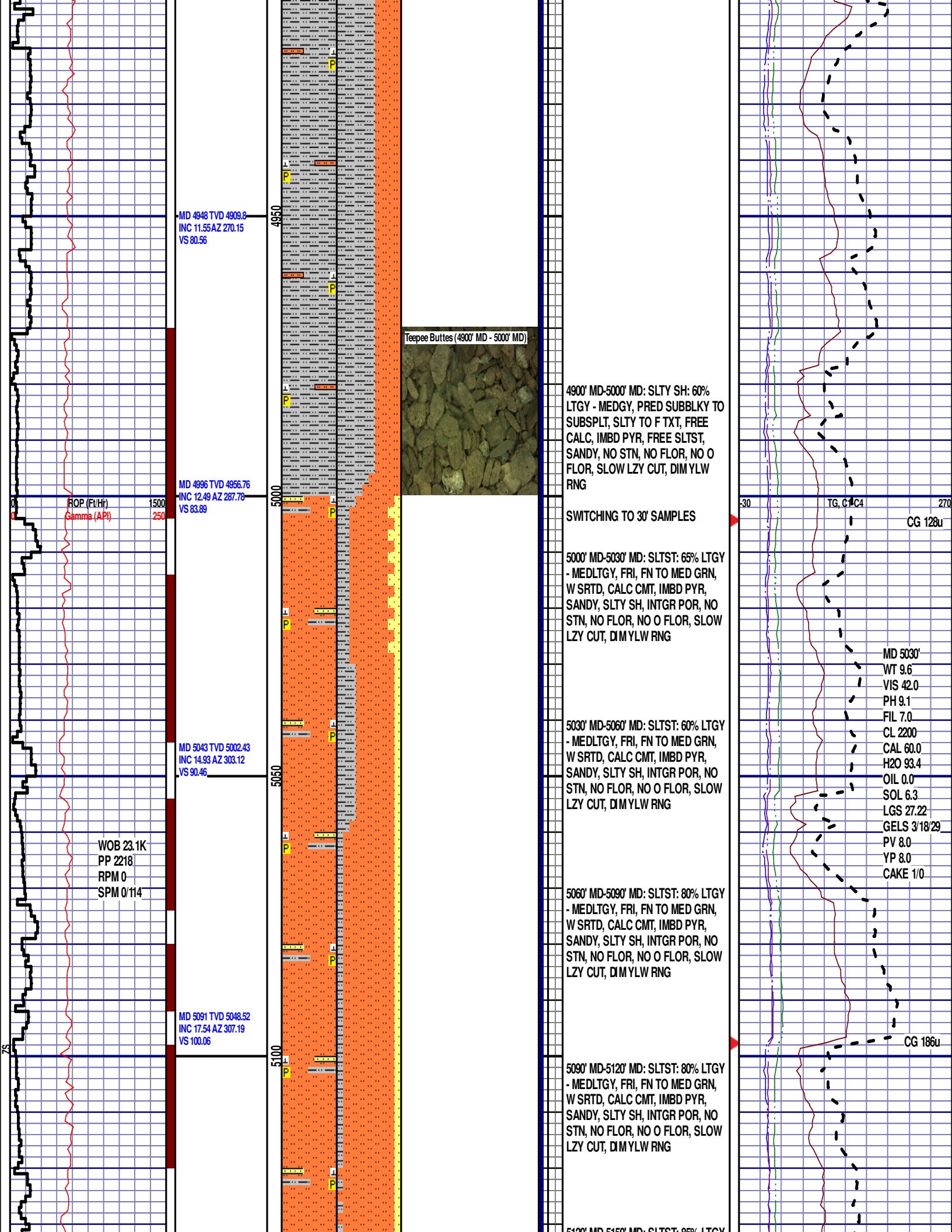
MD 4853 TVD 4816.81  
INC 12.08 AZ 271.81  
VS 76.72

4800' MD-4900' MD: SLTY SH: 80% LTGY - MEDGY, PRED SUBBLKY TO SUBSPLT, SLTY TO F TXT, FREE CALC, IMBD PYR, FREE SLTST, SANDY, NO STN, NO FLOR, NO O FLOR, SLOW LZY CUT, DIM YLW RNG

CG 138u

CG 176u

CG 147u



MD 5137 TVD 5092.25  
INC 18.57 AZ 313.89  
VS 111.12

MD 5185 TVD 5137.46  
INC 20.69 AZ 315.26  
VS 124.33

MD 5232 TVD 5180.94  
INC 23.92 AZ 320.54  
VS 139.52

MD 5280 TVD 5224.11  
INC 27.92 AZ 326.55  
VS 158.38

MD 5326 TVD 5264.12  
INC 31.25 AZ 333.95  
VS 179.79

ROP (Ft/Hr) 1500  
Gamma (API) 250

WOB 16.0K  
PP 2144  
RPM 0  
SPM 0/114

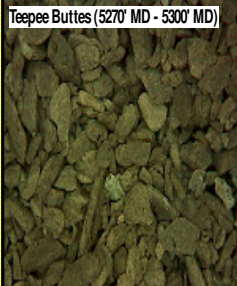
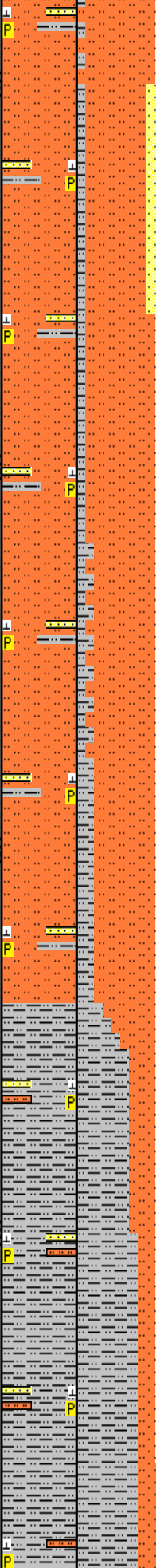
5150

5200

5250

5300

5350



Tepee Buttes (5270' MD - 5300' MD)

5120' MD-5150' MD: SLTST: 65% LTGY  
- MEDLTGY, FRI, FN TO MED GRN,  
W SRTD, CALC CMT, IMBD PYR,  
SANDY, SLTY SH, INTGR POR, NO  
STN, NO FLOR, NO O FLOR, SLOW  
LZY CUT, DIM YLW RNG

5150' MD-5180' MD: SLTST: 70% LTGY  
- MEDLTGY, FRI, FN TO MED GRN,  
W SRTD, CALC CMT, IMBD PYR,  
SANDY, SLTY SH, INTGR POR, NO  
STN, NO FLOR, NO O FLOR, SLOW  
LZY CUT, DIM YLW RNG

5180' MD-5210' MD: SLTST: 80% LTGY  
- MEDLTGY, FRI, FN TO MED GRN,  
W SRTD, CALC CMT, IMBD PYR,  
SANDY, SLTY SH, INTGR POR, NO  
STN, NO FLOR, NO O FLOR, SLOW  
LZY CUT, DIM YLW RNG

5210' MD-5240' MD: SLTST: 75% LTGY  
- MEDLTGY, FRI, FN TO MED GRN,  
W SRTD, CALC CMT, IMBD PYR,  
SANDY, SLTY SH, INTGR POR, NO  
STN, NO FLOR, NO O FLOR, SLOW  
LZY CUT, DIM YLW RNG

5240' MD-5270' MD: SLTST: 70% LTGY  
- MEDLTGY, FRI, FN TO MED GRN,  
W SRTD, CALC CMT, IMBD PYR,  
SANDY, SLTY SH, INTGR POR, NO  
STN, NO FLOR, NO O FLOR, SLOW  
LZY CUT, DIM YLW RNG

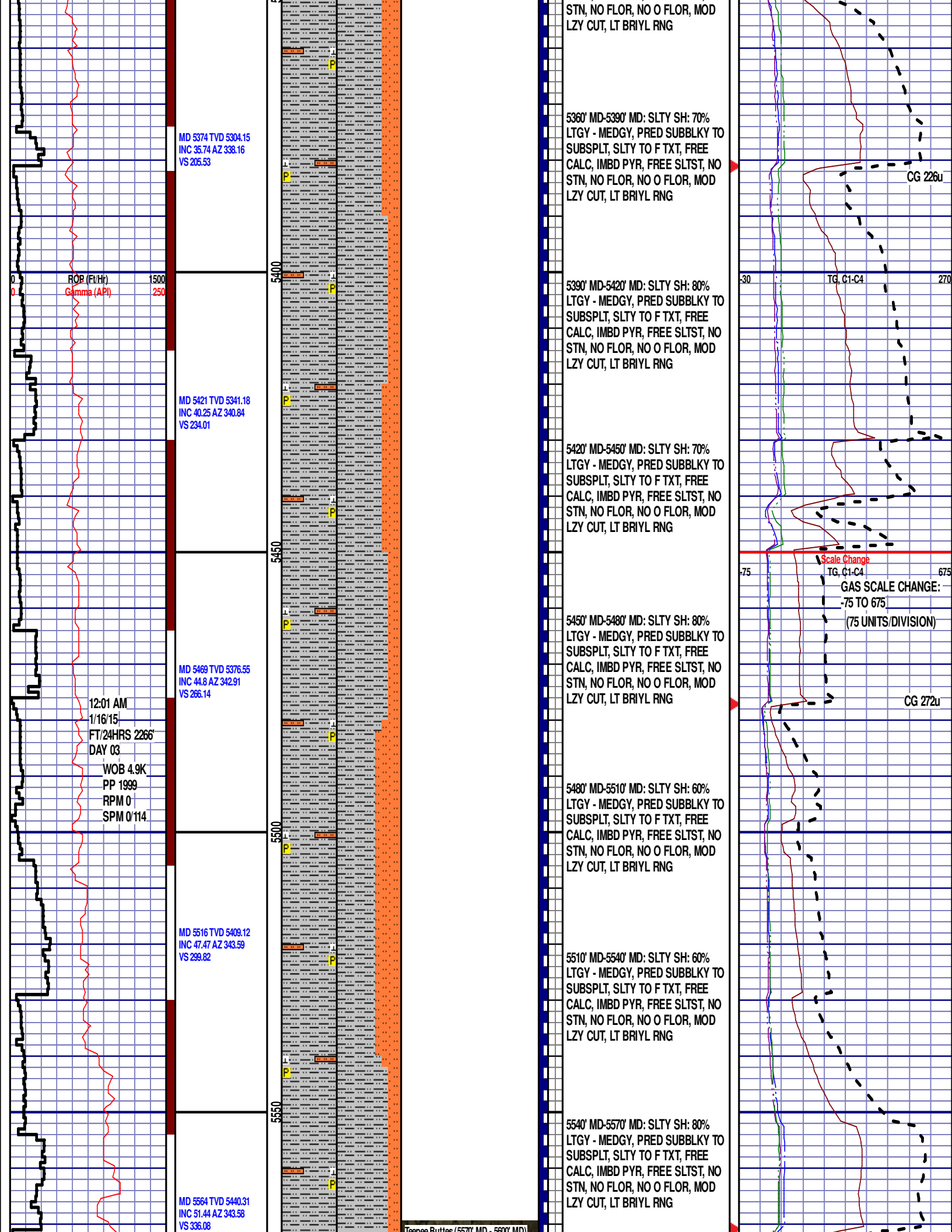
5270' MD-5300' MD: SLTY SH: 60%  
LTGY - MEDGY, PRED SUBBLKY TO  
SUBSPLT, SLTY TO F TXT, FREE  
CALC, IMBD PYR, FREE SLTST,  
SANDY, NO STN, NO FLOR, NO O  
FLOR, SLOW LZY CUT, DIM YLW  
RNG

5300' MD-5330' MD: SLTY SH: 70%  
LTGY - MEDGY, PRED SUBBLKY TO  
SUBSPLT, SLTY TO F TXT, FREE  
CALC, IMBD PYR, FREE SLTST,  
SANDY, NO STN, NO FLOR, NO O  
FLOR, MOD LZY CUT, LT BRIYL RNG

5330' MD-5360' MD: SLTY SH: 70%  
LTGY - MEDGY, PRED SUBBLKY TO  
SUBSPLT, SLTY TO F TXT, FREE  
CALC, IMBD PYR, FREE SLTST, NO

CG 229u  
TG. 01-C4  
30 270

CG 210u



MD 5374 TVD 5304.15  
 INC 35.74 AZ 338.16  
 VS 205.53

MD 5421 TVD 5341.18  
 INC 40.25 AZ 340.84  
 VS 234.01

MD 5469 TVD 5376.55  
 INC 44.8 AZ 342.91  
 VS 266.14

MD 5516 TVD 5409.12  
 INC 47.47 AZ 343.59  
 VS 299.82

MD 5564 TVD 5440.31  
 INC 51.44 AZ 343.58  
 VS 336.08

ROP (Ft/Hr)  
 Gamma (API)

12:01 AM  
 1/16/15  
 FT/24HRS 2266'  
 DAY 03  
 WOB 4.9K  
 PP 1999  
 RPM 0  
 SPM 0/114

STN, NO FLOR, NO O FLOR, MOD  
 LZ Y CUT, LT BRIYL RNG

5360' MD-5390' MD: SLTY SH: 70%  
 LTGY - MEDGY, PRED SUBBLKY TO  
 SUBSPLT, SLTY TO F TXT, FREE  
 CALC, IMBD PYR, FREE SLTST, NO  
 STN, NO FLOR, NO O FLOR, MOD  
 LZ Y CUT, LT BRIYL RNG

5390' MD-5420' MD: SLTY SH: 80%  
 LTGY - MEDGY, PRED SUBBLKY TO  
 SUBSPLT, SLTY TO F TXT, FREE  
 CALC, IMBD PYR, FREE SLTST, NO  
 STN, NO FLOR, NO O FLOR, MOD  
 LZ Y CUT, LT BRIYL RNG

5420' MD-5450' MD: SLTY SH: 70%  
 LTGY - MEDGY, PRED SUBBLKY TO  
 SUBSPLT, SLTY TO F TXT, FREE  
 CALC, IMBD PYR, FREE SLTST, NO  
 STN, NO FLOR, NO O FLOR, MOD  
 LZ Y CUT, LT BRIYL RNG

5450' MD-5480' MD: SLTY SH: 80%  
 LTGY - MEDGY, PRED SUBBLKY TO  
 SUBSPLT, SLTY TO F TXT, FREE  
 CALC, IMBD PYR, FREE SLTST, NO  
 STN, NO FLOR, NO O FLOR, MOD  
 LZ Y CUT, LT BRIYL RNG

5480' MD-5510' MD: SLTY SH: 60%  
 LTGY - MEDGY, PRED SUBBLKY TO  
 SUBSPLT, SLTY TO F TXT, FREE  
 CALC, IMBD PYR, FREE SLTST, NO  
 STN, NO FLOR, NO O FLOR, MOD  
 LZ Y CUT, LT BRIYL RNG

5510' MD-5540' MD: SLTY SH: 60%  
 LTGY - MEDGY, PRED SUBBLKY TO  
 SUBSPLT, SLTY TO F TXT, FREE  
 CALC, IMBD PYR, FREE SLTST, NO  
 STN, NO FLOR, NO O FLOR, MOD  
 LZ Y CUT, LT BRIYL RNG

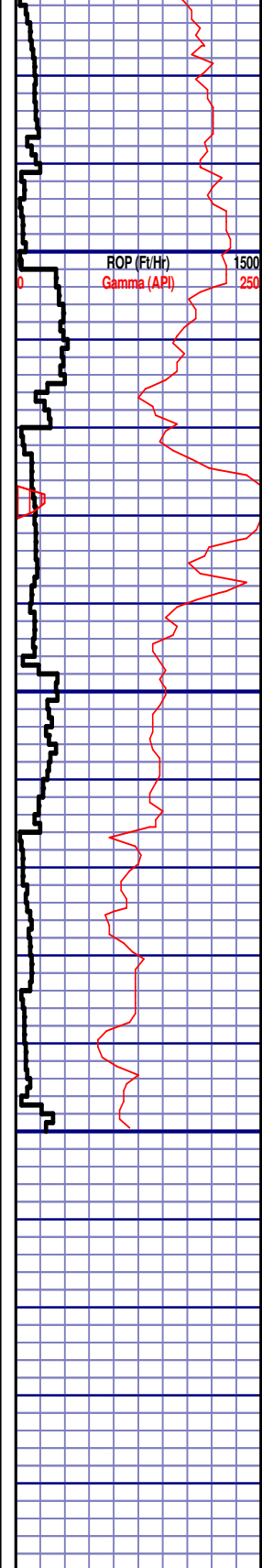
5540' MD-5570' MD: SLTY SH: 80%  
 LTGY - MEDGY, PRED SUBBLKY TO  
 SUBSPLT, SLTY TO F TXT, FREE  
 CALC, IMBD PYR, FREE SLTST, NO  
 STN, NO FLOR, NO O FLOR, MOD  
 LZ Y CUT, LT BRIYL RNG

CG 226u

Scale Change  
 TG, C1-C4

GAS SCALE CHANGE:  
 -75 TO 675  
 (75 UNITS/DIVISION)

CG 272u

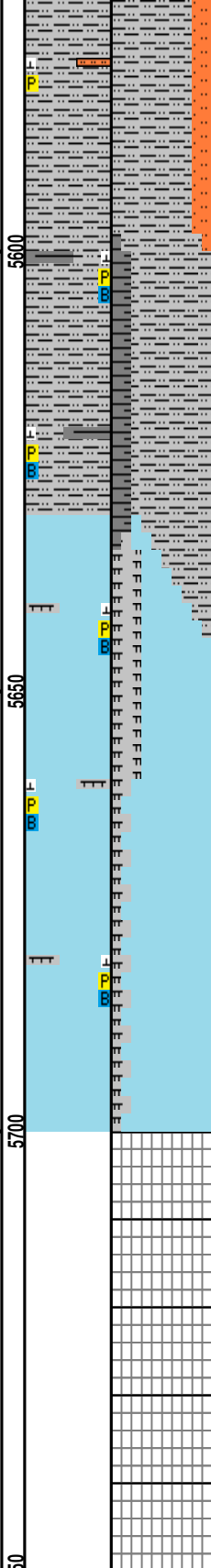


ROP (Ft/Hr)  
Gamma (API)

1500  
250

MD 5611 TVD 5468.38  
INC 55.22 AZ 343.5  
VS 373.56

MD 5659 TVD 5494.3  
INC 59.41 AZ 342.88  
VS 413.69



Sharon Springs (5600' MD - 5630' MD)

Niobrara A Chalk (5630' MD - 5660' MD)

5570' MD-5600' MD: SLTY SH: 80% LTGY - MEDGY, PRED SUBBLKY TO SUBSPLT, SLTY TO F TXT, FREE CALC, IMBD PYR, FREE SLTST, NO STN, NO FLOR, NO O FLOR, MOD LZ Y CUT, LT BRIYL RNG

5600' MD-5630' MD: SLTY SH: 80% LTGY - MEDGY, PRED SUBBLKY TO SUBSPLT, SLTY TO F TXT, FREE CALC, IMBD PYR, ABNT FREE BENT, FREE SH, FREE SLTST, 30% LTOR MIN FLOR, FNT BLSHW O FLOR, IMMED STRMG CUT, HVY BRIYL RNG

**SHARON SPRINGS**

5626' MD 5476' TVD

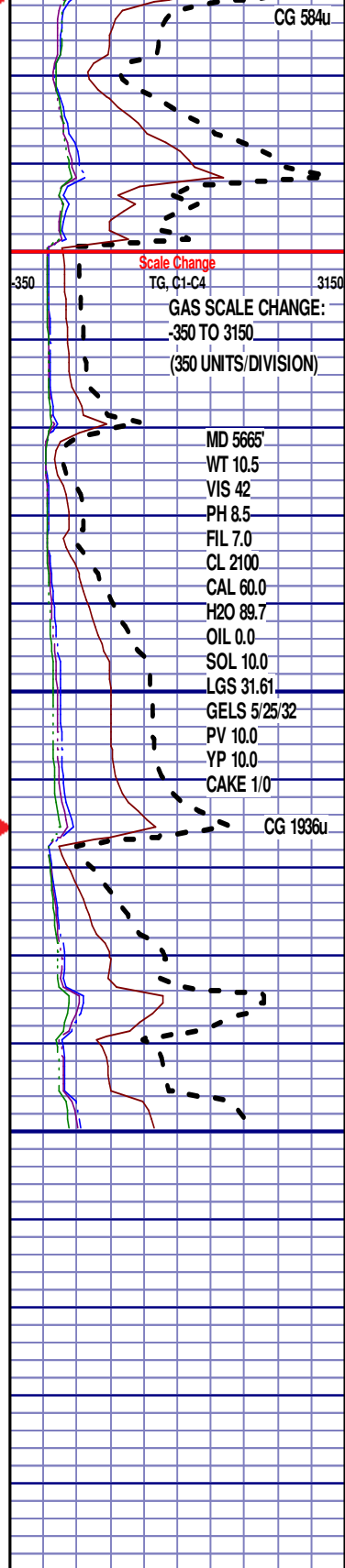
5630' MD-5660' MD: CHK: 70% MEDDRKGY - MEDLTGY, B LKYTO SUBBLKY, GRTY TO SLTY TXT, FRM TO BRIT, FREE BENT, FREE CALC, IMBD PYR, FREE PYR, 30% FREE MRL, NO STN, 5% MIN FLOR, NO O FLOR, IMMED STRMG CUT, HVY BRIYL RNG

**NIORRARA A CHALK**

5656' MD 5493' TVD

5660' MD-5690' MD: CHK: 85% MEDDRKGY - MEDLTGY, BLKY TO SUBBLKY, GRTY TO SLTY TXT, FRM TO BRIT, FREE BENT, FREE CALC, IMBD PYR, FREE PYR, 15% FREE MRL, NO STN, 5% MIN FLOR, NO O FLOR, IMMED STRMG CUT, HVY BRIYL RNG

END OF VERTICAL LOG @ 5700' MD  
ON 1/16/2015, CONTINUED ON  
HORIZONTAL LOG



Scale Change  
TG, C1-C4

GAS SCALE CHANGE:  
-350 TO 3150  
(350 UNITS/DIVISION)

- MD 5665'
- WT 10.5
- VIS 42
- PH 8.5
- FIL 7.0
- CL 2100
- CAL 60.0
- H2O 89.7
- OIL 0.0
- SOL 10.0
- LGS 31.61
- GELS 5/25/32
- PV 10.0
- YP 10.0
- CAKE 1/0

CG 1936u