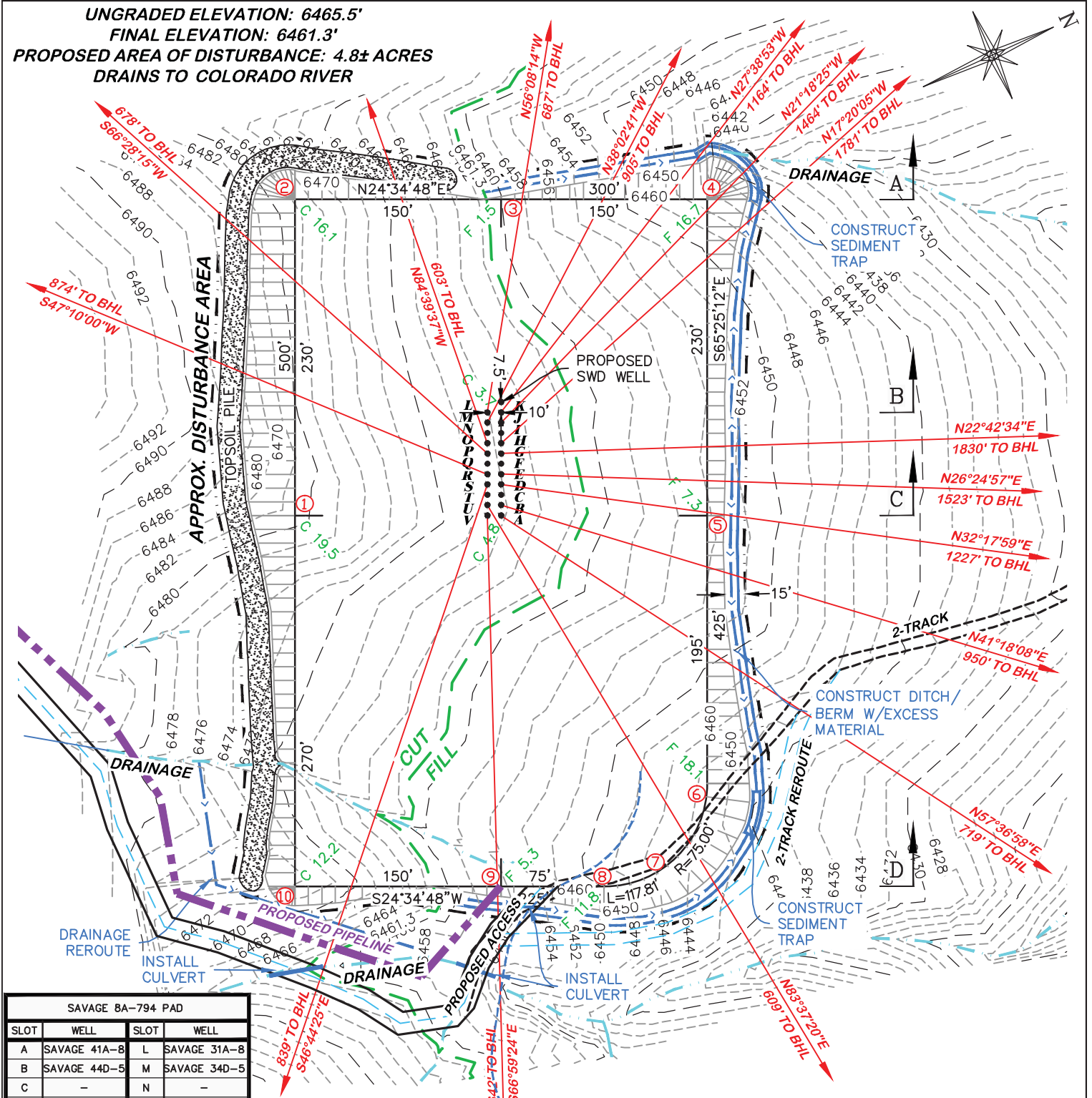


UNGRADED ELEVATION: 6465.5'
 FINAL ELEVATION: 6461.3'
 PROPOSED AREA OF DISTURBANCE: 4.8± ACRES
 DRAINS TO COLORADO RIVER



SAGE 8A-794 PAD			
SLOT	WELL	SLOT	WELL
A	SAVAGE 41A-8	L	SAVAGE 31A-8
B	SAVAGE 44D-5	M	SAVAGE 34D-5
C	-	N	-
D	SAVAGE 44C-5	O	SAVAGE 31B-8
E	SAVAGE 44B-5	P	SAVAGE 31C-8
F	-	Q	-
G	SAVAGE 44A-5	R	SAVAGE 31D-8
H	SAVAGE 34A-5	S	SAVAGE 41D-8
I	-	T	-
J	SAVAGE 34B-5	U	SAVAGE 41B-8
K	SAVAGE 34C-5	V	SAVAGE 41C-8



**BEFORE DIGGING
 CALL FOR
 UTILITY LINE LOCATION**

NOTE: THE EARTH QUANTITIES ON THIS DRAWING ARE ESTIMATED AND THE USE OF SAID QUANTITIES IS AT THE RESPONSIBILITY OF THE USER.

SAVAGE 8A-794 PAD

CONSTRUCTION LAYOUT DRAWING 1 OF 5

**CAERUS OIL & GAS
 SAVAGE 8A-794 PAD
 NENE, SECTION 8, T. 7 S., R. 94 W., 6th P.M.,
 GARFIELD COUNTY, COLORADO**

ESTIMATED EARTHWORK

ITEM	CUT	FILL	TOPSOIL	EXCESS
PAD	24,047 CY	20,711 CY	3,327 CY	9 CY
PIT	NONE			NONE
TOTALS	24,047 CY	20,711 CY	3,327 CY	9 CY

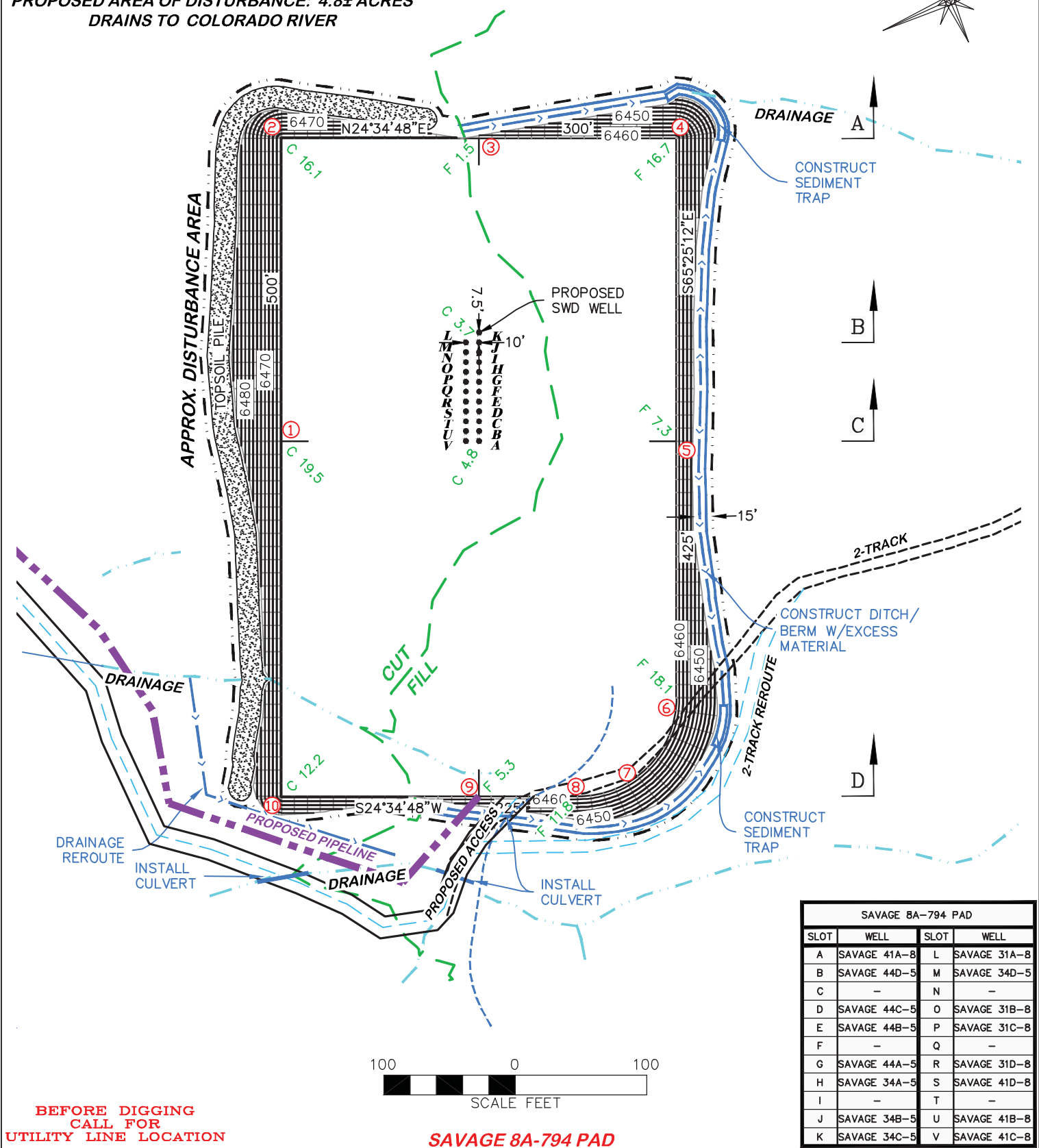
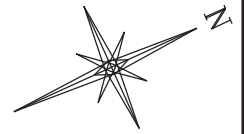
DRG RIFFIN & ASSOCIATES, INC.
 (307) 362-5028 1414 ELK ST., ROCK SPRINGS, WY 82901

DRAWN: 4/1/2015 - TCM	SCALE: 1" = 100'
REVISED: 6/8/2015 - DEH	DRG JOB No. 20794
REVISED ACCESS AND PIPELINE	EXHIBIT 2

***NENE, SECTION 8, T. 7 S., R. 94 W., 6th P.M.,
GARFIELD COUNTY, COLORADO***

DESIGN CONTOURS

**PROPOSED AREA OF DISTURBANCE: 4.8± ACRES
DRAINS TO COLORADO RIVER**



**BEFORE DIGGING
CALL FOR
UTILITY LINE LOCATION**

SAVAGE 8A-794 PAD

Savage 8A-794 PAD			
SLOT	WELL	SLOT	WELL
A	Savage 41A-8	L	Savage 31A-8
B	Savage 44D-5	M	Savage 34D-5
C	—	N	—
D	Savage 44C-5	O	Savage 31B-8
E	Savage 44B-5	P	Savage 31C-8
F	—	Q	—
G	Savage 44A-5	R	Savage 31D-8
H	Savage 34A-5	S	Savage 41D-8
I	—	T	—
J	Savage 34B-5	U	Savage 41B-8
K	Savage 34C-5	V	Savage 41C-8

CONSTRUCTION LAYOUT DRAWING 3 OF 5

DRG

RIFFIN & ASSOCIATES, INC.

(307) 362-5028

1414 ELK ST., ROCK SPRINGS, WY 82901

DRAWN: 4/1/2015 - TCM

SCALE: 1" = 100'

REVISED: 6/8/2015 - DEH

DRG JOB No. 20794

REVISED ACCESS AND PIPELINE

EXHIBIT 2B

DESIGN CONTOURS
CAERUS OIL & GAS
SAVAGE 8A-794 PAD

***NENE, SECTION 8, T. 7 S., R. 94 W., 6th P.M.,
GARFIELD COUNTY, COLORADO***

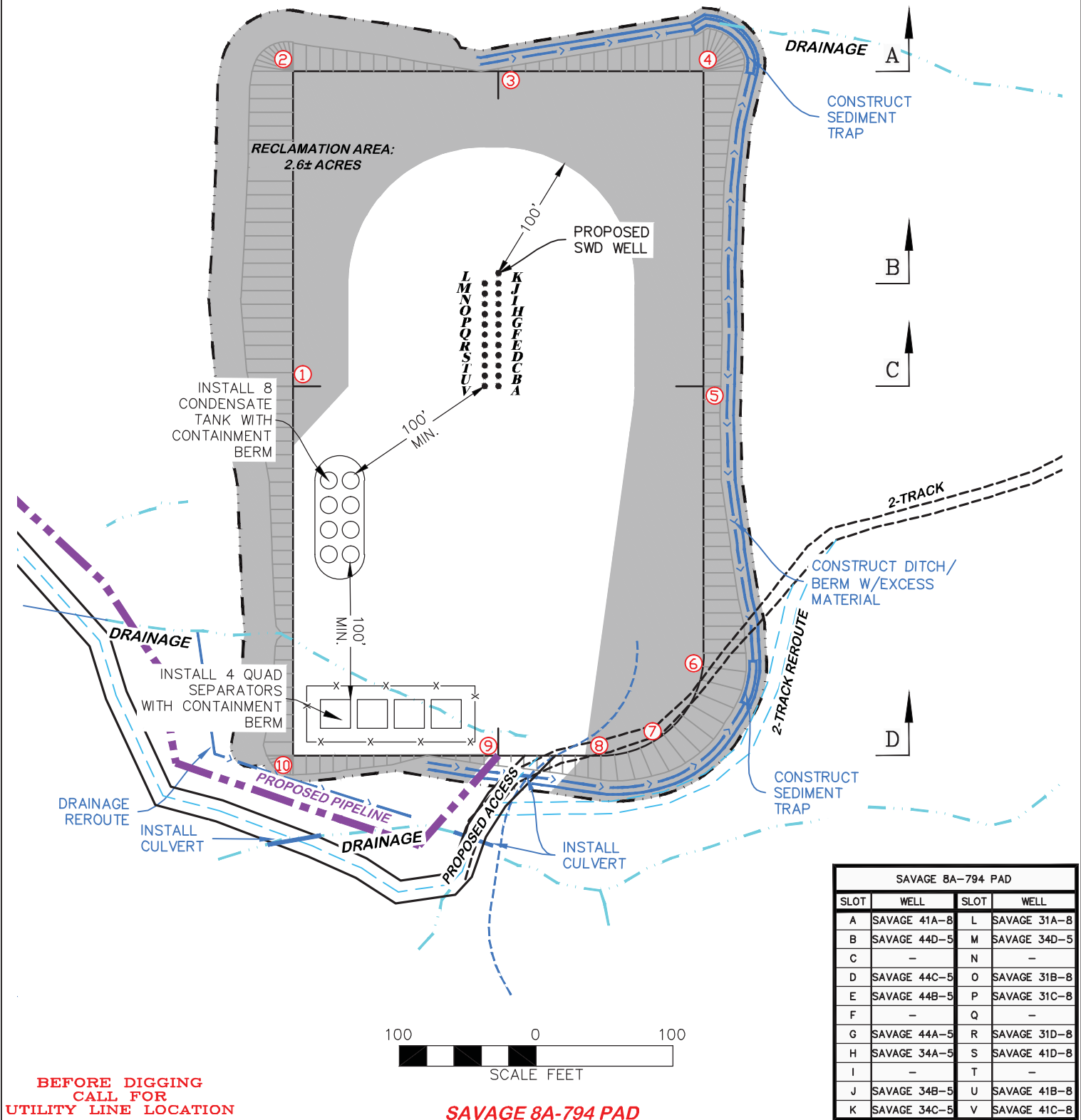
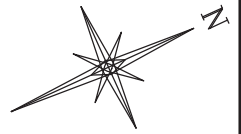
UNGRADED ELEVATION: 6465.5'

FINAL ELEVATION: 6461.3'

PROPOSED AREA OF DISTURBANCE: 4.8± ACRES

DRAINS TO COLORADO RIVER

PROPOSED RECLAMATION



SAVAGE 8A-794 PAD			
SLOT	WELL	SLOT	WELL
A	SAVAGE 41A-8	L	SAVAGE 31A-8
B	SAVAGE 44D-5	M	SAVAGE 34D-5
C	-	N	-
D	SAVAGE 44C-5	O	SAVAGE 31B-8
E	SAVAGE 44B-5	P	SAVAGE 31C-8
F	-	Q	-
G	SAVAGE 44A-5	R	SAVAGE 31D-8
H	SAVAGE 34A-5	S	SAVAGE 41D-8
I	-	T	-
J	SAVAGE 34B-5	U	SAVAGE 41B-8
K	SAVAGE 34C-5	V	SAVAGE 41C-8

BEFORE DIGGING
CALL FOR
UTILITY LINE LOCATION

SAVAGE 8A-794 PAD



RIFFIN & ASSOCIATES, INC.

(307) 362-5028

1414 ELK ST., ROCK SPRINGS, WY 82901

DRAWN: 4/1/2015 - TCM

SCALE: 1" = 100'

REVISED: 6/8/2015 - DEH

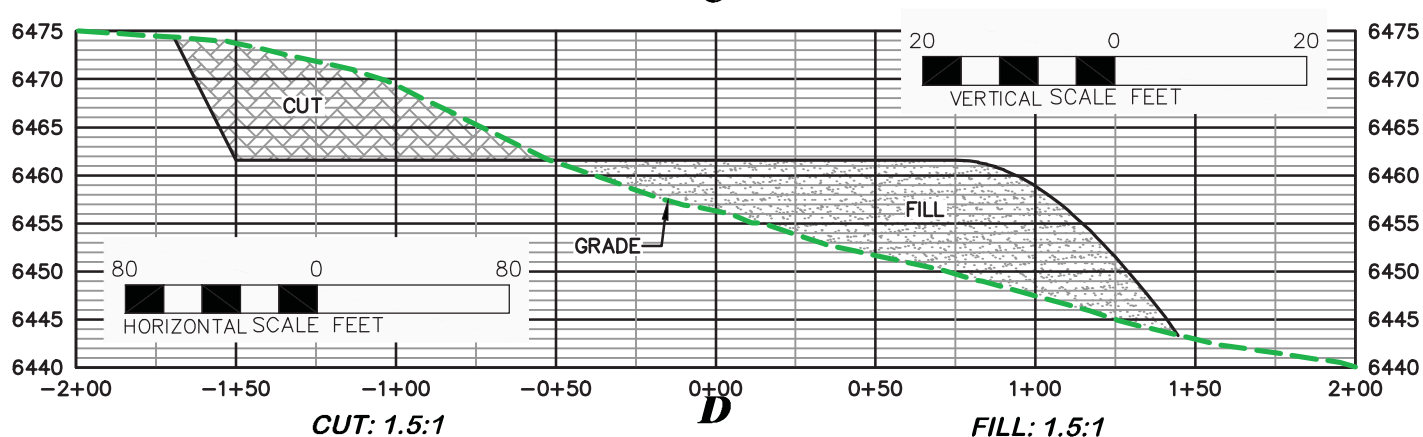
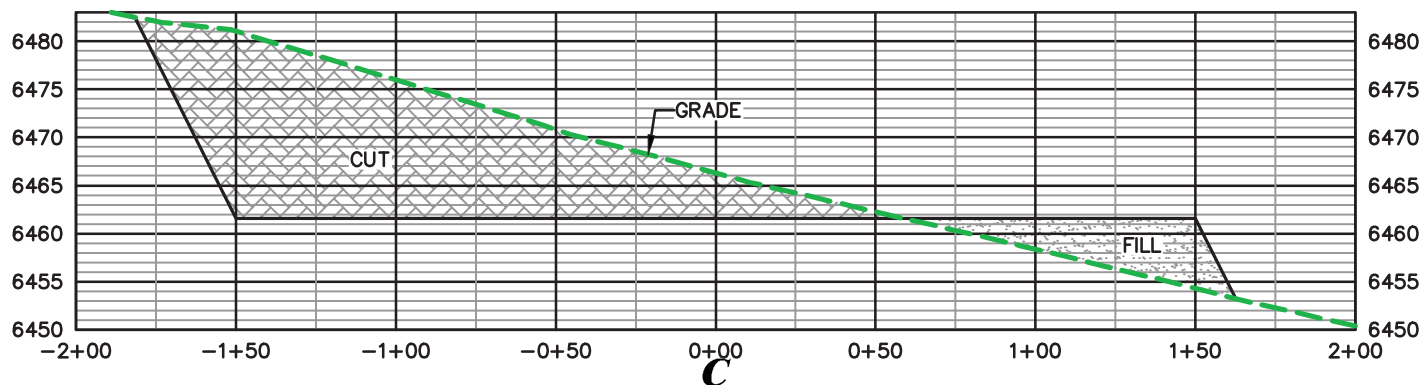
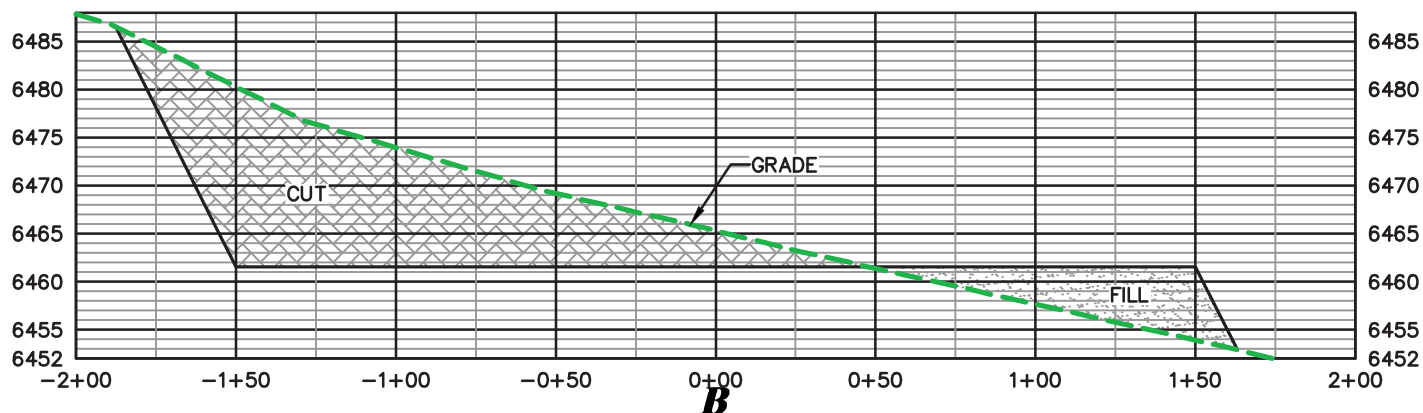
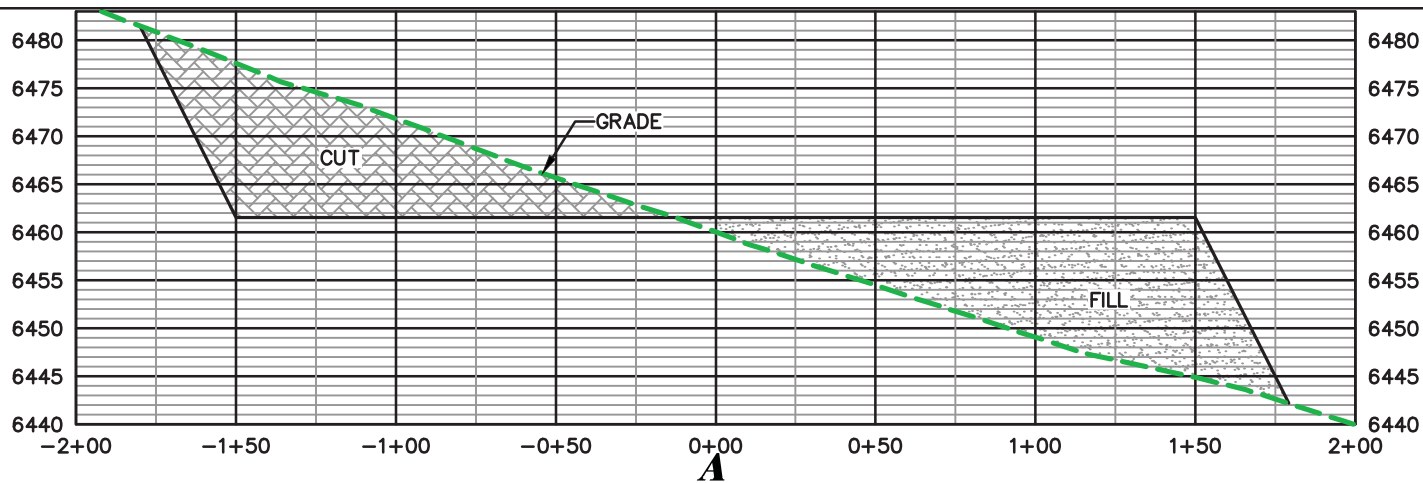
DRG JOB No. 20794

REVISED ACCESS AND PIPELINE

EXHIBIT 2C

CONSTRUCTION LAYOUT DRAWING 4 OF 5

**PROPOSED RECLAMATION
CAERUS OIL & GAS
SAVAGE 8A-794 PAD
NENE, SECTION 8, T. 7 S., R. 94 W., 6th P.M.,
GARFIELD COUNTY, COLORADO**



SAVAGE 8A-794 PAD

(307) 362-5028

1414 ELK ST., ROCK SPRINGS, WY 82901

DRAWN: 4/1/2015 - TCM

SCALE: HORT. 1"=80' VERT. 1"=20'

REVISED: 6/8/2015 - DEH

DRG JOB No. 20794

REVISED PAD NAME

EXHIBIT 3

CONSTRUCTION LAYOUT DRAWING 5 OF 5

CAERUS OIL & GAS

SAVAGE 8A-794 PAD

**NENE, SECTION 8, T. 7 S., R. 94 W., 6th P.M.,
GARFIELD COUNTY, COLORADO**