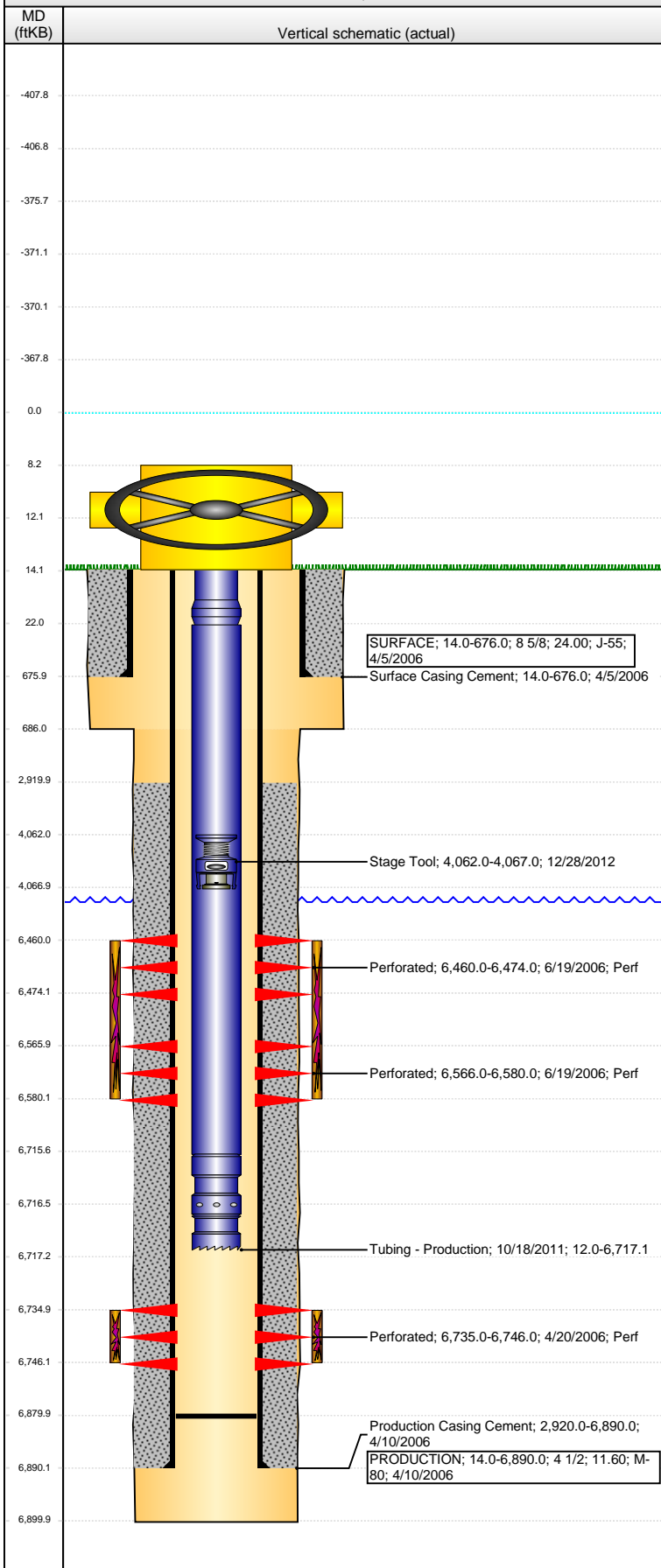


Well Name: WELLS RANCH 42-31

DEVIATED - ORIGINAL HOLE, 7/28/2015 8:52:02 AM



Well Header

API 05-123-23415	Business Unit DJ BASIN	District 15	Well Config DEVIATED
Original KB Elevation (ft) 4,642.00	KB - GL / MSL (ftKB) 14.00	Spud Date 4/5/2006	P & A Date

Comment

Poor bond 4750-6000, 7/21/06 DRILLED UP PLUG & C/O TO 6881'

Directions To Well

WCR 67 & WCR 68, E 0.2, S 2.3, NW 0.4, W 2.2, S 0.3 INTO LOCATION.

Congressional Location

Quarter 1	Quarter 2	Quarter 3	Quarter 4	Section	Township	Twnshp N...	Range	Rng E/W Dir
		SE	NE	31	6	N	63	W

Bottom Hole Location

North-South Distance (ft)	From N or S Line	East-West Distance (ft)	From E or W Line

Plug Back Total Depths

Date	Depth (ftKB)	Method	Com
4/11/2006	6,873.0	CASING TALLY	FLOAT SHOE
4/17/2006	6,863.0	CASED HOLE LOG	DEPTH-LOGGER/CBL
7/21/2006	6,880.0	TAG	C/O & LAND TBG

Wellbore Sections

Section Des	Size (in)	Act Top, MD (ftKB)	Act Btm, MD (ftKB)
SURFACE	12 1/4	14.0	686.0
PRODUCTION	7 7/8	686.0	6,900.0

Zone Statuses

Zone Name	Status Date	Status	Fluid Type	Job	Prod Method
NIOBRARA	6/21/2006	PR		DRILLING/CO...	
CODELL	6/21/2006	PR		DRILLING/CO...	
CODELL	10/21/2011	PR		RE-FRAC, 9/14...	

Casing Strings

SURFACE, 676.0ftKB

Casing Description	Run Date	OD (in)	Wt/Len (l...	Grade	Top, MD (ft...	MD (ftKB)
SURFACE	4/5/2006	8 5/8	24.00	J-55	14.0	676.0

PRODUCTION, 6,890.0ftKB

Casing Description	Run Date	OD (in)	Wt/Len (l...	Grade	Top, MD (ft...	MD (ftKB)
PRODUCTION	4/10/2006	4 1/2	11.60	M-80	14.0	6,890.0

Cement

Description	Top Depth (ftKB)	Bottom Depth (ftKB)
Surface Casing Cement	14.0	676.0
Description	Top Depth (ftKB)	Bottom Depth (ftKB)
Production Casing Cement	2,920.0	6,890.0

Tubing Strings

Tubing Description	Run Date	String...	ID (in)	Wt (lb/ft)	Grade	Len (ft)	Set De...
Tubing	6/19/2006	2 3/8	1.995	4.70	J-55	6,697.00	
Tubing Description	Run Date	String...	ID (in)	Wt (lb/ft)	Grade	Len (ft)	Set De...
Tubing - Frac string	9/15/2011	2 7/8	2.441	6.50	N-80	6,660.68	
Tubing Description	Run Date	String...	ID (in)	Wt (lb/ft)	Grade	Len (ft)	Set De...
Tubing - Production	10/18/2011	2 3/8	1.995	4.70	J-55	6,705.09	

Tubing Components

Item Des	OD (in)	Wt (lb/ft)	Grade	Jts	Len (ft)	Btm (ftKB)	Btm (TVD) (ftKB)
Pup Joint	2 3/8	4.70	J-55	1	10.00	22.0	
EUE 8rd Tubing	2 3/8	4.70	J-55	204	6,693.59	6,715.6	
Seal Nipple	2 3/8	4.70	N-80	1	1.10	6,716.7	
Notched collar	2 3/8	4.70	J-55	1	0.40	6,717.1	

Perforation Data

Zone	Bnch/St g	Entered Shot Total	Top (ftKB)	Btm (ftKB)	Date
NIOBRARA, ORIGINAL HOLE	A	84	6,460.00	6,474.00	6/19/2006
NIOBRARA, ORIGINAL HOLE	B	84	6,566.00	6,580.00	6/19/2006
CODELL, ORIGINAL HOLE		44	6,735.00	6,746.00	4/20/2006

Well Name: WELLS RANCH 42-31

DEVIATED - ORIGINAL HOLE, 7/28/2015 8:52:04 AM

Stimulations & Treatments

Date	Zone	Primary Job Type
6/19/2006	NIOBRARA, ORIGINAL HOLE	DRILLING/COMPLETION - ORIGINAL

Technical Result	Tech Result Details	Tech Result Note

Comment

Date	Zone	Primary Job Type
6/19/2006	CODELL, ORIGINAL HOLE	DRILLING/COMPLETION - ORIGINAL

Technical Result	Tech Result Details	Tech Result Note

Comment

Date	Zone	Primary Job Type
10/15/2011	CODELL, ORIGINAL HOLE	RE-FRAC

Technical Result	Tech Result Details	Tech Result Note
Success	According to Plan	

Comment
(CODELL RF): HAD TO WAIT ON SAND TO BE DELEIVERED TO LOC. OPERATIONALLY ONCE WE GOT GOING, JOB WENT WELL WITH NO ISSUES TO REPORT. AVG VISC=21.8, PH=10.2, TEMP=67.8, PRESSURE=4912, RATE=14.8.

Other In Hole

Run Date	Des	OD (in)	Top (ftKB)	Btm (ftKB)
12/28/2012	Stage Tool	2	4,062.0	4,067.0

Logs

Date	Type	Top, MD (ftKB)	Btm, MD (ftKB)
4/17/2006	CBL/CCL/GR	4,989.0	6,861.0
5/2/2014	GYRO	10.0	6,600.0

