

URSA RESOURCES GROUP II LLC

Watson Ranch B 33C-17-07-95

Craig 7

Post Job Summary

Cement Surface Casing

Date Prepared: 03/08/14

Job Date: 03/08/14

Submitted by: Jenna Cook - Cement Engineer

The Road to Excellence Starts with Safety

Sold To #: 369755	Ship To #: 3645152	Quote #: 0022013072	Sales Order #: 0902206802
Customer: URSA RESOURCES GROUP II LLC		Customer Rep: CRAIG SMITH	
Well Name: WATSON RANCH B	Well #: 33C-17-07-95	API/UWI #: 05-045-22802-00	
Field: PARACHUTE	City (SAP): PARACHUTE	County/Parish: GARFIELD	State: COLORADO
Legal Description: SE SW-17-7S-95W-1069FSL-1890FWL			
Contractor: CRAIG DRLG		Rig/Platform Name/Num: CRAIG 7	
Job BOM: 7521			
Well Type: DIRECTIONAL GAS			
Sales Person: HALAMERICA\HB80977		Srvc Supervisor: Craig Kukus	

Job

Formation Name			
Formation Depth (MD)	Top		Bottom
Form Type		BHST	200 degF
Job depth MD	1796ft	Job Depth TVD	1796 FT
Water Depth		Wk Ht Above Floor	4 FT
Perforation Depth (MD)	From	To	

Well Data

Description	New / Used	Size in	ID in	Weight lbm/ft	Thread	Grade	Top MD ft	Bottom MD ft	Top TVD ft	Bottom TVD ft
Casing		8.625	7.921	32	LTC	J-55	0	1796	0	0
Open Hole Section			12.25				0	1819	0	0

Tools and Accessories

Type	Size in	Qty	Make	Depth ft	Type	Size in	Qty	Make
Guide Shoe	8.625	1		1796	Top Plug	8.625	1	HES
Float Shoe	8.625				Bottom Plug	8.625		HES
Float Collar	8.625	1		1749.82	SSR plug set	8.625		HES
Insert Float	8.625				Plug Container	8.625	1	HES
Stage Tool	8.625				Centralizers	8.625		HES

Miscellaneous Materials

Gelling Agt	Conc	Surfactant	Conc	Acid Type	Qty	Conc
Treatment Fld	Conc	Inhibitor	Conc	Sand Type	Size	Qty

Fluid Data

Stage/Plug #: 1									
Fluid #	Stage Type	Fluid Name	Qty	Qty UoM	Mixing Density lbm/gal	Yield ft3/sack	Mix Fluid Gal	Rate bbl/min	Total Mix Fluid Gal
1	Water	Water	20	bbl	8.33			4	

Fluid #	Stage Type	Fluid Name	Qty	Qty UoM	Mixing Density lbm/gal	Yield ft3/sack	Mix Fluid Gal	Rate bbl/min	Total Mix Fluid Gal
2	Lead Cement	VARICEM (TM) CEMENT	285	sack	12.3	2.45		8	14.17

0.25 lbm		POLY-E-FLAKE (101216940)							
Fluid #	Stage Type	Fluid Name	Qty	Qty UoM	Mixing Density lbm/gal	Yield ft3/sack	Mix Fluid Gal	Rate bbl/mi n	Total Mix Fluid Gal
3	Tail Cement	VARICEM (TM) CEMENT	125	sack	12.8	2.18		8	12.11
0.25 lbm		POLY-E-FLAKE (101216940)							
Fluid #	Stage Type	Fluid Name	Qty	Qty UoM	Mixing Density lbm/gal	Yield ft3/sack	Mix Fluid Gal	Rate bbl/mi n	Total Mix Fluid Gal
4	Displacement	Displacement	106.6	bbl	8.33			8 / 2	
Cement Left In Pipe	Amount	47 ft			Reason			Shoe Joint	
Mix Water:	pH ##	Mix Water Chloride: ## ppm			Mix Water Temperature: ## °F °C				
Cement Temperature:	## °F °C	Plug Displaced by: ## lb/gal kg/m3 XXXX			Disp. Temperature: ## °F °C				
Plug Bumped?	Yes	Bump Pressure: 910 psi			Floats Held? Yes				
Cement Returns:	20 bbl	Returns Density: ## lb/gal kg/m3			Returns Temperature: ## °F °C				
Comment									

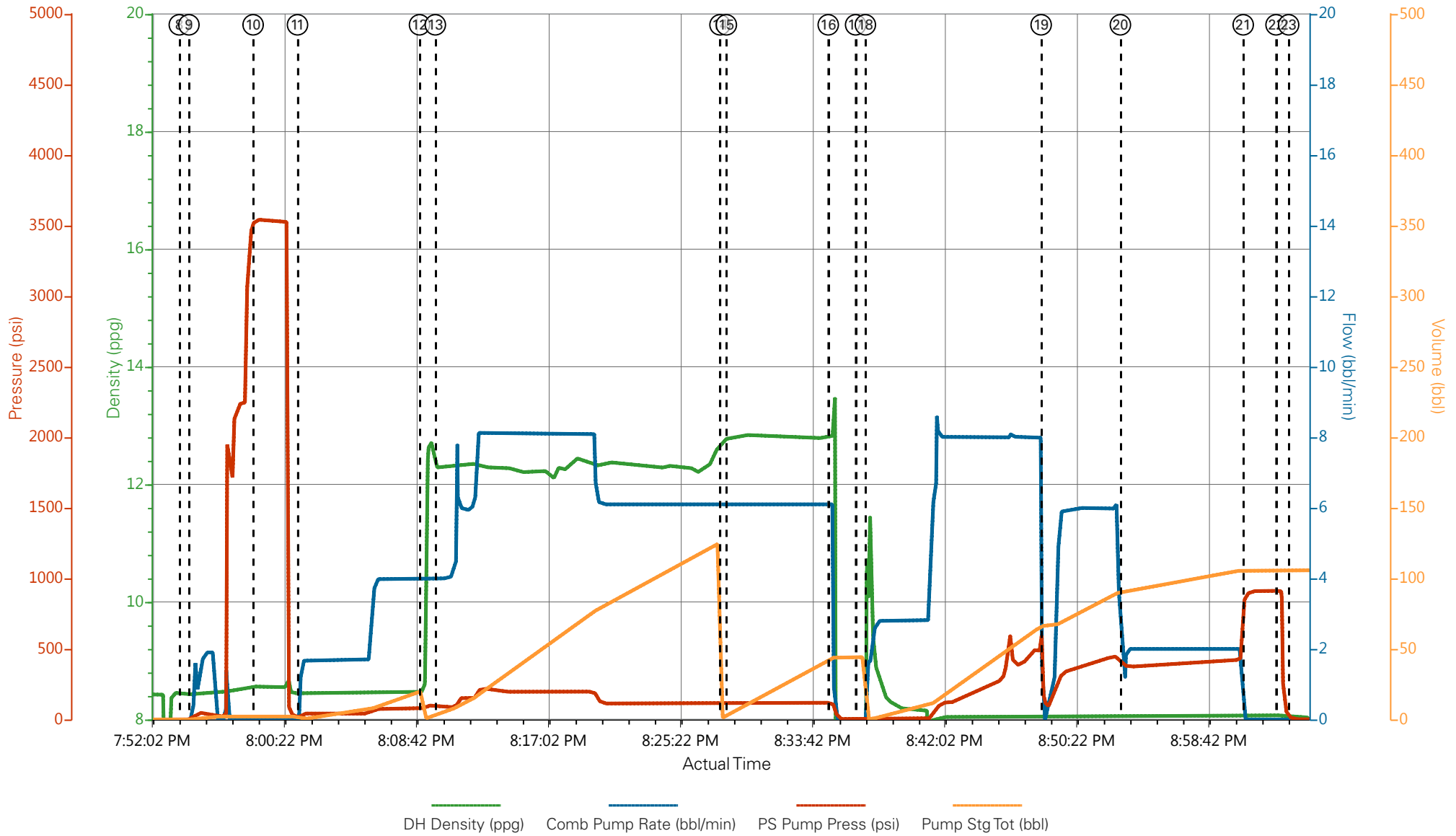
1.0 Real-Time Job Summary

1.1 Job Event Log

Event	4	Assessment Of Location Safety Meeting	Assessment Of Location Safety Meeting	3/5/2015	16:15:00	USER						ASSESMENT OF LOC WALK THRU
Event	5	Pre-Rig Up Safety Meeting	Pre-Rig Up Safety Meeting	3/5/2015	18:30:00	USER	0.0	0.00	0.0	0.0		PRE-RIG UP SAFETY MEETING ALL HES CREW PRESENT
Event	6	Rig-Up Equipment	Rig-Up Equipment	3/5/2015	18:35:00	USER	0.0	0.00	0.0	0.0		RIG UP GROUND IRON TO RED ZONE AND SUCTION HOSES TO UP RIGHT
Event	7	Pre-Job Safety Meeting	Pre-Job Safety Meeting	3/5/2015	19:45:00	USER	8.34	0.00	0.0	0.0		PRE-JOB SAFETY MEETING ALL RIG PERSONEL AND HES CREW PRESENT
Event	8	Start Job	Start Job	3/5/2015	19:53:56	COM6	8.34	0.00	0.0	0.0		START JOB: TD 1819 FT 1796.39 FT SJT 46.57 FT OH 12 1/4 IN WF/WT 9.5# CSG 8 5/8 IN 32# J-55
Event	9	Prime Pumps	Prime Pumps	3/5/2015	19:54:32	USER	8.34	0.00	48	2.0		PRIME LINES WITH FRESH WATER
Event	10	Test Lines	Test Lines	3/5/2015	19:58:35	COM6	8.34	0.00	3541.00	0.1		PRESSURE TEST LINES 5 TH GEAR STALL OUT AT 2200 PSI TEST TO 3543 PSI
Event	11	Pump Spacer 1	Pump Spacer 1	3/5/2015	20:01:23	COM6	8.34	4.0	80	20		PUMP 20 BBLS H2O SPACER AHEAD
Event	12	Pump Lead Cement	Pump Lead Cement	3/5/2015	20:09:05	COM6	12.3	8.0	195	124.0		PUMP 285 SKS LEAD CEMENT AT 12.3 PPG 2.45Y 14.17 GAL/SKS RETURNS GOOD
Event	13	Check Weight	Check weight	3/5/2015	20:10:05	COM6	12.28	8.0	195	4.0		CEMENT DIP GOOD
Event	14	Pump Tail Cement	Pump Tail Cement	3/5/2015	20:28:03	COM6	12.8	6.10	120.0	48.5		PUMP 125 SKS TAIL CEMENT AT 12.8 PPG 2.18 Y 12.11 GAL/SKS RETURNS GOOD

Event	15	Check Weight	Check weight	3/5/2015	20:28:27	COM6	12.79	6.10	119.00	4.1	CEMENT DIP GOOD
Event	16	Shutdown	Shutdown	3/5/2015	20:34:53	USER	12.82	6.10	118.00	194.9	SHUT DOWN END CEMENT / READY TUB TO WASH UP ON TOP
Event	17	Drop Top Plug	Drop Top Plug	3/5/2015	20:36:36	COM6	8.34	0.00	-4.00	0.0	DROP TOP PLUG / PLUG AWAY
Event	18	Pump Displacement	Pump Displacement	3/5/2015	20:37:13	COM6	8.34	8.0	450.0	67.0	PUMP H2O DISPLACEMENT
Event	19	Slow Rate	Slow Rate	3/5/2015	20:48:19	USER	8.34	6.10	450.0	67.0	SLOW RATE PRESSURE SPIKED UP
Event	20	Slow Rate	Slow Rate	3/5/2015	20:53:19	USER	8.34	2.10	385.00	87.0	SLOW RATE CEMENT TO SURFACE 87 BBLS DISPLACEMENT GONE
Event	21	Bump Plug	Bump Plug	3/5/2015	21:01:04	COM6	8.34	0.00	886.00	106.0	PLUG LANDED AT 420 PSI BUMP TO 910 PSI
Event	22	Check Floats	Check Floats	3/5/2015	21:03:08	USER	8.34	0.00	912.00	106.0	CHECK FLOATS / FLOATS HELD GOT BACK 1/2 BBL TO TANKS
Event	23	End Job	End Job	3/5/2015	21:03:56	COM6	8.34	0.00	0.0	300.9	END JOB / RETURNS THRU OUT THE JOB / GOT CEMENT TO SURFACE TOTAL 20 BBLS
Event	24	Pre-Rig Down Safety Meeting	Pre-Rig Down Safety Meeting	3/5/2015	21:08:00	USER					PRE-RIG DOWN SAFETY MEETING ALL HES CREW PRESENT
Event	25	Rig-Down Equipment	Rig-Down Equipment	3/5/2015	21:20:00	USER					RIG DOWN FLOOR AND WASH UP PUMPS AND LINES RIG DOWN GROUND IRON AND EQUIPMENT
Event	26	Depart Location Safety Meeting	Depart Location Safety Meeting	3/5/2015	21:50:00	USER					DEPART LOC SAFETY MEETING
Event	27	Comment	Comment	3/5/2015	22:00:00	USER					THANK YOU FOR USING HALLIBURTON CEMENTING SERVICES AND THE CREW OF CRAIG KUKUS

URSA RESOURCES GROUP CRAIG 7 WATSON B 33 C-17-07-95 8 5/8 IN SURFACE



DH Density (ppg) Comb Pump Rate (bbl/min) PS Pump Press (psi) Pump Stg Tot (bbl)

- | | | | | |
|--|--------------------------|---------------------|--------------------------------|-----------------------------------|
| ① Call Out | ⑦ Pre-Job Safety Meeting | ⑬ Check weight | ⑲ Slow Rate | 25 Rig-Down Equipment |
| ② Depart from Service Center or Other Site | ⑧ Start Job | ⑭ Pump Tail Cement | 20 Slow Rate | 26 Depart Location Safety Meeting |
| ③ Arrive At Loc | ⑨ Prime Pumps | ⑮ Check weight | 21 Bump Plug | 27 Comment |
| ④ Assessment Of Location Safety Meeting | ⑩ Test Lines | ⑯ Shutdown | 22 Check Floats | |
| ⑤ Pre-Rig Up Safety Meeting | ⑪ Pump Spacer 1 | ⑰ Drop Top Plug | 23 End Job | |
| ⑥ Rig-Up Equipment | ⑫ Pump Lead Cement | ⑱ Pump Displacement | 24 Pre-Rig Down Safety Meeting | |

▼ HALLIBURTON | iCem® Service

Created: 2015-03-05 16:44:42, Version: 4.1.107

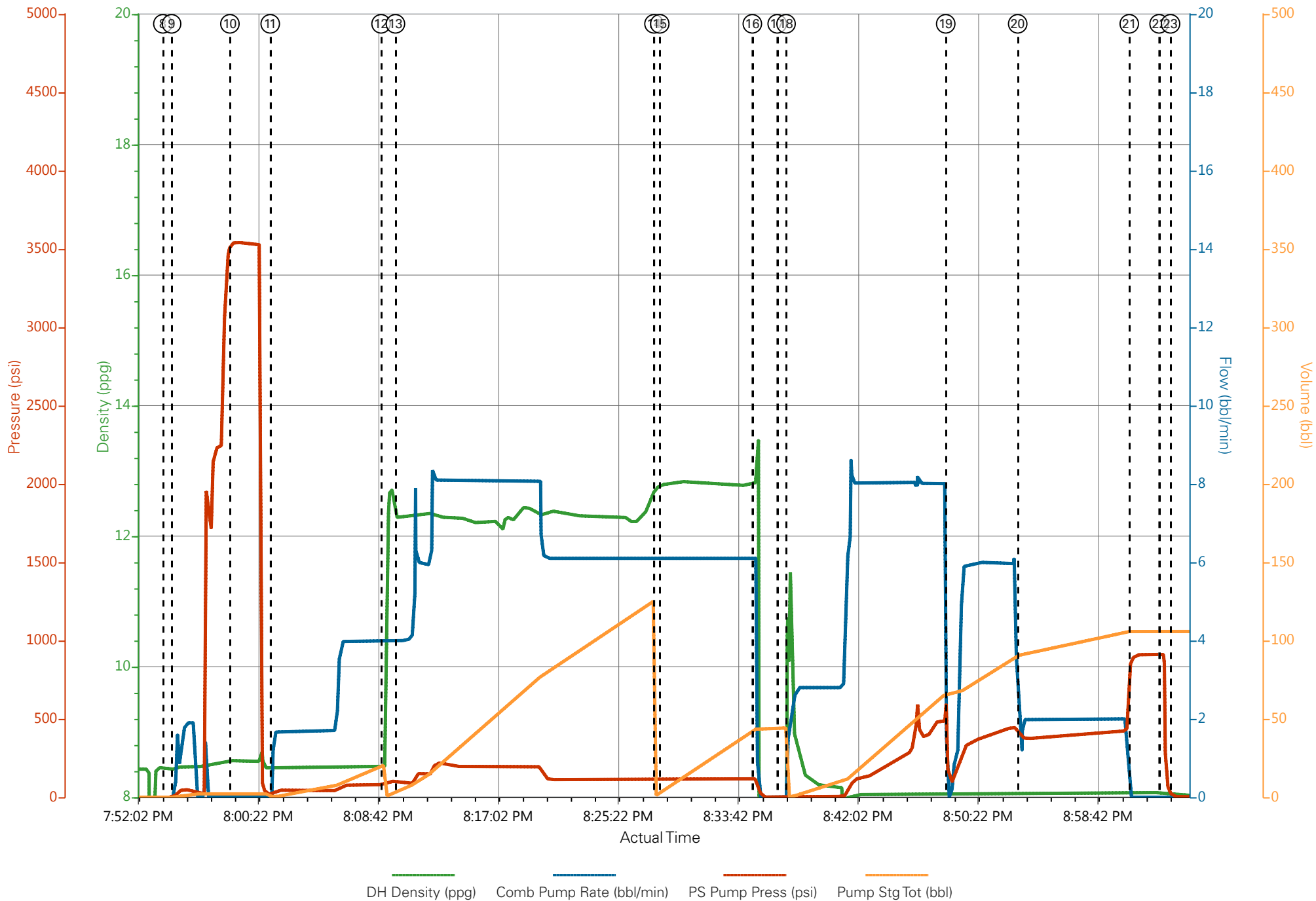
Edit

Customer : URSA RESOURCE GROUP II LLC
 Representative : CRAIG KUKUS

Job Date : 3/5/2015 6:26:26 PM
 Sales Order # : 0902206802

Well : B 33 C-17-07-95
 ELITE 1 / OPERATOR : STEVE SMITH / ROGER LAULAINEN

URSA RESOURCES GROUP CRAIG 7 WATSON B 33 C-17-07-95 8 5/8 IN SURFACE



DH Density (ppg) Comb Pump Rate (bbl/min) PS Pump Press (psi) Pump Stg Tot (bbl)

Sales Order #: 0902206802	Line Item: 10	Survey Conducted Date: 3/5/2015
Customer: URSA RESOURCES GROUP II LLC		Job Type (BOM): CMT SURFACE CASING BOM
Customer Representative: CRAIG SMITH		API / UWI: (leave blank if unknown) 05-045-22802-00
Well Name: WATSON RANCH B		Well Number: 0080716305
Well Type: DIRECTIONAL GAS	Well Country: USA	
H2S Present: No	Well State: COLORADO	Well County: GARFIELD

Dear Customer,

We hope that you were satisfied with the service quality of this job performed by Halliburton. It is the aim of our management and service personnel to deliver equipment and service of a standard unmatched in the service sector of the energy industry.

Please take the time to let us know if our performance met with your satisfaction. Please be as critical as possible to ensure we constantly improve our service. Your comments are of great value to us and are intended for the exclusive use of Halliburton.

CUSTOMER SATISFACTION SURVEY

CATEGORY	CUSTOMER SATISFACTION RESPONSE	
Survey Conducted Date	The date the survey was conducted	3/5/2015
Survey Interviewer	The survey interviewer is the person who initiated the survey.	HX19742
Customer Participation	Did the customer participate in this survey? (Y/N)	Yes
Customer Representative	Enter the Customer representative name	CRAIG SMITH
HSE	Was our HSE performance satisfactory? Circle Y or N	Yes
Equipment	Were you satisfied with our Equipment? Circle Y or N	Yes
Personnel	Were you satisfied with our people? Circle Y or N	Yes
Customer Comment	Customer's Comment	JOB WELL DONE

CUSTOMER SIGNATURE

Sales Order #: 0902206802	Line Item: 10	Survey Conducted Date: 3/5/2015
Customer: URSA RESOURCES GROUP II LLC		Job Type (BOM): CMT SURFACE CASING BOM
Customer Representative: CRAIG SMITH		API / UWI: (leave blank if unknown) 05-045-22802-00
Well Name: WATSON RANCH B		Well Number: 0080716305
Well Type: DIRECTIONAL GAS	Well Country: USA	
H2S Present: No	Well State: COLORADO	Well County: GARFIELD

KEY PERFORMANCE INDICATORS

General	
Survey Conducted Date	3/5/2015
The date the survey was conducted	

Cementing KPI Survey	
Type of Job	0
Select the type of job. (Cementing or Non-Cementing)	
Select the Maximum Deviation range for this Job	Vertical
What is the highest deviation for the job you just completed? This may not be the maximum well deviation.	
Total Operating Time (hours)	3
Total Operating Hours Including Rig-up, Pumping, Rig-down. Enter in decimal format.	
HSE Incident, Accident, Injury	No
HSE Incident, Accident, Injury. This should be recordable incidents only.	
Was the job purpose achieved?	Yes
Was the job delivered correctly as per customer agreed design?	
Pumping Hours	1
Total number of hours pumping fluid on this job. Enter in decimal format.	
Type of Rig Classification Job Was Performed	Drilling Rig (Portable)
Type Of Rig (classification) Job Was Performed On	
Number Of JSAs Performed	6
Number Of Jsas Performed	
Was this a Primary Cement Job (Yes / No)	Yes
Primary Cement Job= Casing job, Liner job, or Tie-back job.	
Number of Unplanned Shutdowns	0
Unplanned shutdown is when injection stops for any period of time.	
Customer Non-Productive Rig Time (hrs)	0

Sales Order #: 0902206802	Line Item: 10	Survey Conducted Date: 3/5/2015
Customer: URSA RESOURCES GROUP II LLC		Job Type (BOM): CMT SURFACE CASING BOM
Customer Representative: CRAIG SMITH		API / UWI: (leave blank if unknown) 05-045-22802-00
Well Name: WATSON RANCH B		Well Number: 0080716305
Well Type: DIRECTIONAL GAS	Well Country: USA	
H2S Present: No	Well State: COLORADO	Well County: GARFIELD

Lost time due to Halliburton in the start, execution, or completion of an ordered service or product, or delays in a follow-on service. Enter in decimal format. 0 if none.	
Was the non productive time or the unplanned shutdown caused by a problem with a piece of equipment? Was the non productive time or the unplanned shutdown caused by a problem with a piece of equipment?	No
Did We Run Wiper Plugs? Did We Run Top And Bottom Casing Wiper Plugs?	Top
If a top plug was run, was the plug bumped? (Yes/No/N/A) If a top plug was run, was the plug bumped? (Yes/No/N/A)	Yes
If applicable, was Halliburton float equipment used? (Yes/No/N/A) If applicable, was Halliburton float equipment used? (Yes/No/N/A)	Yes
If applicable, did the floats hold? (Yes/No/N/A) If applicable, did the floats hold? (Yes/No/N/A)	Yes
Mixing Density of Job Stayed in Designed Density Range (0-100%) Density Range defined as +/- .20 ppg. Calculation: Total BBLs cement mixed at designed density divided by total BBLs of cement multiplied by 100	99
Pump Rate (percent) of Job Stayed At Designed Pump Rate Pump Rate range defined as +/- 1bbl/min. Calculation: Total BBLs of fluid pumped at the designed rate divided by Total BBLs of fluid pumped, multiplied by 100	99
If applicable, were there returns throughout the job? (Yes/No/N/A) If applicable, were there returns throughout the job? (Yes/No/N/A)	Yes
Nbr of Remedial Plug Jobs Rqd - HES Number Of Remedial Plug Jobs Needed After Primary Plug Pumped By HES	0
Nbr of Remedial Sqz Jobs Rqd - HES Number Of Remedial Squeeze Jobs Required After Primary Job Performed By HES	0

HALLIBURTON

Water Analysis Report

Company: URSA RESOURCES
Submitted by: CRAIG KUKUS
Attention: _____
Lease WATSON
Well # B 33C-17-07-95

Date: 3/5/2015
Date Rec.: 3/5/2015
S.O.# 902206802
Job Type: 8 5/8 SURFACE

Specific Gravity	<i>MAX</i>	0
pH	<i>8</i>	7
Potassium (K)	<i>5000</i>	200 Mg / L
HARDNESS	<i>500</i>	425 Mg / L
Iron (FE2)	<i>300</i>	0 Mg / L
Chlorides (Cl)	<i>3000</i>	500 Mg / L
Sulfates (SO ₄)	<i>1500</i>	<200 Mg / L
Chlorine (Cl ₂)		0 Mg / L
Temp	<i>40-80</i>	50 Deg
Total Dissolved Solids		560 Mg / L

Respectfully: CRAIG KUKUS

Title: CEMENTING SUPERVISOR

Location: Grand Junction, CO

NOTICE:

This report is limited to the described sample tested. Any person using or relying on this report agrees that Halliburton shall not be liable for any loss or damage whether due to act or omission resulting from such report or its