

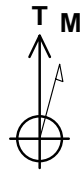
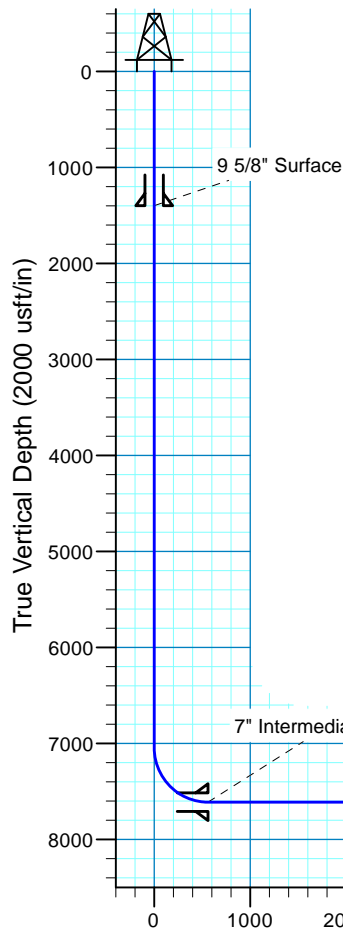
Critter Creek 558-2109H

Sec.21-T11N-R63W
Weld County, Colorado

Surface Location

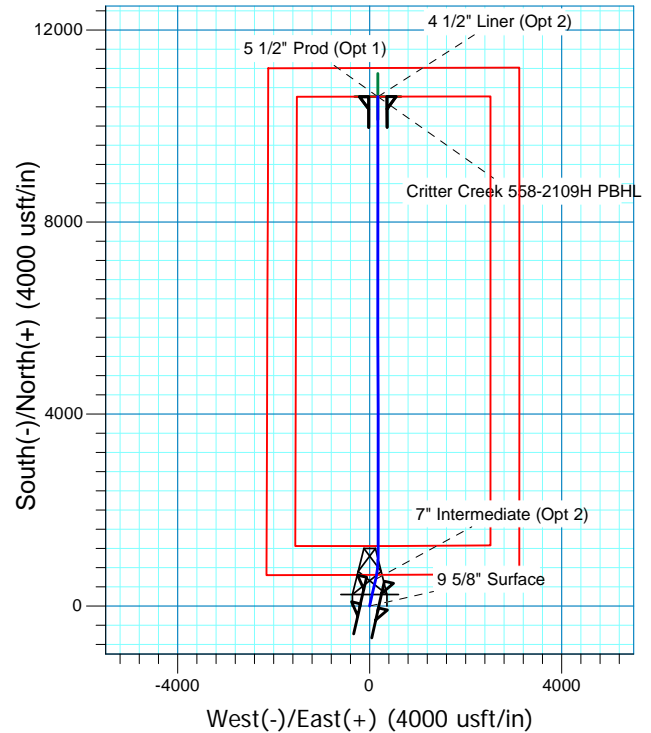
NAD 1927 (NADCON CONUS) Colorado North 501
Ground Elevation: 5256.0 RKB @ 5281.0usft (KB GL+25')

Northing	Easting	Latitude	Longitude
577316.64	2293191.79	40° 54' 47.940 N	104° 26' 21.324 W

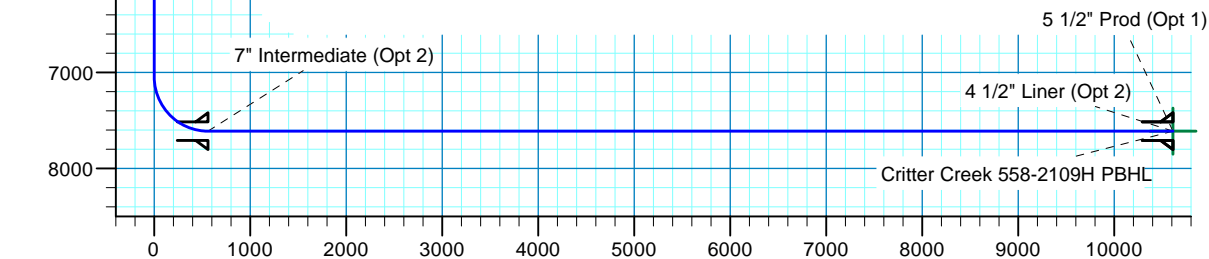


Azimuths to True North
Magnetic North: 8.30°

Magnetic Field
Strength: 52931.8snT
Dip Angle: 67.37°
Date: 4/29/2015
Model: IGRF2015



Project: DJ - Hereford Ranch
Site: Critter Creek C21 NENW
Well: Critter Creek 558-2109H
Plan: APD Plan (Plat Cert 4/6/15)



SECTION DETAILS

Sec	MD	Inc	Azi	TVD	+N/-S	+E/-W	Dleg	TFace	VSect	Target
1	0.0	0.00	0.00	0.0	0.0	0.0	0.00	0.00	0.0	
2	7040.0	0.00	0.00	7040.0	0.0	0.0	0.00	0.00	0.0	
3	7940.0	90.00	12.90	7613.0	558.5	127.9	10.00	12.90	560.5	
4	8370.1	90.00	360.00	7613.0	984.9	176.1	3.00	-90.00	987.7	Critter Creek 558-2109H PBHL
5	17997.4	90.00	360.00	7613.0	10612.2	175.8	0.00	0.00	10613.7	Critter Creek 558-2109H PBHL

TARGET DETAILS

Name	TVD	+N/-S	+E/-W	Northing	Easting	Latitude	Longitude	Shape
Critter Creek 558-2109H PBHL	7613.0	10612.2	175.8	587930.22	2293240.64	40° 56' 32.796 N	104° 26' 19.034 W	Point

Denver Division- Colorado

**DJ - Hereford Ranch
Crittter Creek C21 NENW
Crittter Creek 558-2109H**

OH

Plan: APD Plan (Plat Cert 4/6/15)

Standard Planning Report

29 April, 2015

EOG Resources, Inc.

Planning Report

Database:	EDM_DENVER	Local Co-ordinate Reference:	Well Critter Creek 558-2109H
Company:	Denver Division- Colorado	TVD Reference:	RKB @ 5281.0usft (KB GL+25')
Project:	DJ - Hereford Ranch	MD Reference:	RKB @ 5281.0usft (KB GL+25')
Site:	Critter Creek C21 NENW	North Reference:	True
Well:	Critter Creek 558-2109H	Survey Calculation Method:	Minimum Curvature
Wellbore:	OH		
Design:	APD Plan (Plat Cert 4/6/15)		

Project	DJ - Hereford Ranch, Weld County		
Map System:	US State Plane 1927 (Exact solution)	System Datum:	Mean Sea Level
Geo Datum:	NAD 1927 (NADCON CONUS)		
Map Zone:	Colorado North 501		

Site	Critter Creek C21 NENW		
Site Position:		Northing:	577,300.00 usft
From:	Map	Easting:	2,293,200.00 usft
Position Uncertainty:	0.0 usft	Slot Radius:	13-3/16 "
		Latitude:	40° 54' 47.775 N
		Longitude:	104° 26' 21.220 W
		Grid Convergence:	0.69 °

Well	Critter Creek 558-2109H		
Well Position	+N/-S	16.7 usft	Northing:
	+E/-W	-8.0 usft	Easting:
Position Uncertainty	0.0 usft	Wellhead Elevation:	0.0 usft
		Latitude:	40° 54' 47.940 N
		Longitude:	104° 26' 21.324 W
		Ground Level:	5,256.0 usft

Wellbore	OH				
Magnetics	Model Name	Sample Date	Declination (°)	Dip Angle (°)	Field Strength (nT)
	IGRF2015	4/29/2015	8.30	67.37	52,932

Design	APD Plan (Plat Cert 4/6/15)			
Audit Notes:				
Version:	Phase:	PROTOTYPE	Tie On Depth:	0.0
Vertical Section:	Depth From (TVD) (usft)	+N/-S (usft)	+E/-W (usft)	Direction (°)
	0.0	0.0	0.0	0.95

Plan Sections										
Measured Depth (usft)	Inclination (°)	Azimuth (°)	Vertical Depth (usft)	+N/-S (usft)	+E/-W (usft)	Dogleg Rate (°/100usft)	Build Rate (°/100usft)	Turn Rate (°/100usft)	TFO (°)	Target
0.0	0.00	0.00	0.0	0.0	0.0	0.00	0.00	0.00	0.00	
7,040.0	0.00	0.00	7,040.0	0.0	0.0	0.00	0.00	0.00	0.00	
7,940.0	90.00	12.90	7,613.0	558.5	127.9	10.00	10.00	0.00	12.90	
8,370.1	90.00	360.00	7,613.0	984.9	176.1	3.00	0.00	-3.00	-90.00	Critter Creek 558-210
17,997.4	90.00	360.00	7,613.0	10,612.2	175.8	0.00	0.00	0.00	0.00	Critter Creek 558-210

EOG Resources, Inc.

Planning Report

Database:	EDM_DENVER	Local Co-ordinate Reference:	Well Critter Creek 558-2109H
Company:	Denver Division- Colorado	TVD Reference:	RKB @ 5281.0usft (KB GL+25')
Project:	DJ - Hereford Ranch	MD Reference:	RKB @ 5281.0usft (KB GL+25')
Site:	Critter Creek C21 NENW	North Reference:	True
Well:	Critter Creek 558-2109H	Survey Calculation Method:	Minimum Curvature
Wellbore:	OH		
Design:	APD Plan (Plat Cert 4/6/15)		

Planned Survey									
Measured Depth (usft)	Inclination (°)	Azimuth (°)	Vertical Depth (usft)	+N/-S (usft)	+E/-W (usft)	Vertical Section (usft)	Dogleg Rate (°/100usft)	Build Rate (°/100usft)	Turn Rate (°/100usft)
0.0	0.00	0.00	0.0	0.0	0.0	0.0	0.00	0.00	0.00
100.0	0.00	0.00	100.0	0.0	0.0	0.0	0.00	0.00	0.00
200.0	0.00	0.00	200.0	0.0	0.0	0.0	0.00	0.00	0.00
300.0	0.00	0.00	300.0	0.0	0.0	0.0	0.00	0.00	0.00
400.0	0.00	0.00	400.0	0.0	0.0	0.0	0.00	0.00	0.00
500.0	0.00	0.00	500.0	0.0	0.0	0.0	0.00	0.00	0.00
600.0	0.00	0.00	600.0	0.0	0.0	0.0	0.00	0.00	0.00
700.0	0.00	0.00	700.0	0.0	0.0	0.0	0.00	0.00	0.00
800.0	0.00	0.00	800.0	0.0	0.0	0.0	0.00	0.00	0.00
900.0	0.00	0.00	900.0	0.0	0.0	0.0	0.00	0.00	0.00
1,000.0	0.00	0.00	1,000.0	0.0	0.0	0.0	0.00	0.00	0.00
1,100.0	0.00	0.00	1,100.0	0.0	0.0	0.0	0.00	0.00	0.00
1,200.0	0.00	0.00	1,200.0	0.0	0.0	0.0	0.00	0.00	0.00
1,300.0	0.00	0.00	1,300.0	0.0	0.0	0.0	0.00	0.00	0.00
1,399.0	0.00	0.00	1,399.0	0.0	0.0	0.0	0.00	0.00	0.00
9 5/8" Surface									
1,400.0	0.00	0.00	1,400.0	0.0	0.0	0.0	0.00	0.00	0.00
1,500.0	0.00	0.00	1,500.0	0.0	0.0	0.0	0.00	0.00	0.00
1,600.0	0.00	0.00	1,600.0	0.0	0.0	0.0	0.00	0.00	0.00
1,700.0	0.00	0.00	1,700.0	0.0	0.0	0.0	0.00	0.00	0.00
1,800.0	0.00	0.00	1,800.0	0.0	0.0	0.0	0.00	0.00	0.00
1,900.0	0.00	0.00	1,900.0	0.0	0.0	0.0	0.00	0.00	0.00
2,000.0	0.00	0.00	2,000.0	0.0	0.0	0.0	0.00	0.00	0.00
2,100.0	0.00	0.00	2,100.0	0.0	0.0	0.0	0.00	0.00	0.00
2,200.0	0.00	0.00	2,200.0	0.0	0.0	0.0	0.00	0.00	0.00
2,300.0	0.00	0.00	2,300.0	0.0	0.0	0.0	0.00	0.00	0.00
2,400.0	0.00	0.00	2,400.0	0.0	0.0	0.0	0.00	0.00	0.00
2,500.0	0.00	0.00	2,500.0	0.0	0.0	0.0	0.00	0.00	0.00
2,600.0	0.00	0.00	2,600.0	0.0	0.0	0.0	0.00	0.00	0.00
2,700.0	0.00	0.00	2,700.0	0.0	0.0	0.0	0.00	0.00	0.00
2,800.0	0.00	0.00	2,800.0	0.0	0.0	0.0	0.00	0.00	0.00
2,900.0	0.00	0.00	2,900.0	0.0	0.0	0.0	0.00	0.00	0.00
3,000.0	0.00	0.00	3,000.0	0.0	0.0	0.0	0.00	0.00	0.00
3,100.0	0.00	0.00	3,100.0	0.0	0.0	0.0	0.00	0.00	0.00
3,200.0	0.00	0.00	3,200.0	0.0	0.0	0.0	0.00	0.00	0.00
3,300.0	0.00	0.00	3,300.0	0.0	0.0	0.0	0.00	0.00	0.00
3,400.0	0.00	0.00	3,400.0	0.0	0.0	0.0	0.00	0.00	0.00
3,500.0	0.00	0.00	3,500.0	0.0	0.0	0.0	0.00	0.00	0.00
3,600.0	0.00	0.00	3,600.0	0.0	0.0	0.0	0.00	0.00	0.00
3,700.0	0.00	0.00	3,700.0	0.0	0.0	0.0	0.00	0.00	0.00
3,800.0	0.00	0.00	3,800.0	0.0	0.0	0.0	0.00	0.00	0.00
3,900.0	0.00	0.00	3,900.0	0.0	0.0	0.0	0.00	0.00	0.00
4,000.0	0.00	0.00	4,000.0	0.0	0.0	0.0	0.00	0.00	0.00
4,100.0	0.00	0.00	4,100.0	0.0	0.0	0.0	0.00	0.00	0.00
4,200.0	0.00	0.00	4,200.0	0.0	0.0	0.0	0.00	0.00	0.00
4,300.0	0.00	0.00	4,300.0	0.0	0.0	0.0	0.00	0.00	0.00
4,400.0	0.00	0.00	4,400.0	0.0	0.0	0.0	0.00	0.00	0.00
4,500.0	0.00	0.00	4,500.0	0.0	0.0	0.0	0.00	0.00	0.00
4,600.0	0.00	0.00	4,600.0	0.0	0.0	0.0	0.00	0.00	0.00
4,700.0	0.00	0.00	4,700.0	0.0	0.0	0.0	0.00	0.00	0.00
4,800.0	0.00	0.00	4,800.0	0.0	0.0	0.0	0.00	0.00	0.00
4,900.0	0.00	0.00	4,900.0	0.0	0.0	0.0	0.00	0.00	0.00
5,000.0	0.00	0.00	5,000.0	0.0	0.0	0.0	0.00	0.00	0.00
5,100.0	0.00	0.00	5,100.0	0.0	0.0	0.0	0.00	0.00	0.00

EOG Resources, Inc.

Planning Report

Database:	EDM_DENVER	Local Co-ordinate Reference:	Well Critter Creek 558-2109H
Company:	Denver Division- Colorado	TVD Reference:	RKB @ 5281.0usft (KB GL+25')
Project:	DJ - Hereford Ranch	MD Reference:	RKB @ 5281.0usft (KB GL+25')
Site:	Critter Creek C21 NENW	North Reference:	True
Well:	Critter Creek 558-2109H	Survey Calculation Method:	Minimum Curvature
Wellbore:	OH		
Design:	APD Plan (Plat Cert 4/6/15)		

Planned Survey									
Measured Depth (usft)	Inclination (°)	Azimuth (°)	Vertical Depth (usft)	+N/-S (usft)	+E/-W (usft)	Vertical Section (usft)	Dogleg Rate (°/100usft)	Build Rate (°/100usft)	Turn Rate (°/100usft)
5,200.0	0.00	0.00	5,200.0	0.0	0.0	0.0	0.00	0.00	0.00
5,300.0	0.00	0.00	5,300.0	0.0	0.0	0.0	0.00	0.00	0.00
5,400.0	0.00	0.00	5,400.0	0.0	0.0	0.0	0.00	0.00	0.00
5,500.0	0.00	0.00	5,500.0	0.0	0.0	0.0	0.00	0.00	0.00
5,600.0	0.00	0.00	5,600.0	0.0	0.0	0.0	0.00	0.00	0.00
5,700.0	0.00	0.00	5,700.0	0.0	0.0	0.0	0.00	0.00	0.00
5,800.0	0.00	0.00	5,800.0	0.0	0.0	0.0	0.00	0.00	0.00
5,900.0	0.00	0.00	5,900.0	0.0	0.0	0.0	0.00	0.00	0.00
6,000.0	0.00	0.00	6,000.0	0.0	0.0	0.0	0.00	0.00	0.00
6,100.0	0.00	0.00	6,100.0	0.0	0.0	0.0	0.00	0.00	0.00
6,200.0	0.00	0.00	6,200.0	0.0	0.0	0.0	0.00	0.00	0.00
6,300.0	0.00	0.00	6,300.0	0.0	0.0	0.0	0.00	0.00	0.00
6,400.0	0.00	0.00	6,400.0	0.0	0.0	0.0	0.00	0.00	0.00
6,500.0	0.00	0.00	6,500.0	0.0	0.0	0.0	0.00	0.00	0.00
6,600.0	0.00	0.00	6,600.0	0.0	0.0	0.0	0.00	0.00	0.00
6,700.0	0.00	0.00	6,700.0	0.0	0.0	0.0	0.00	0.00	0.00
6,800.0	0.00	0.00	6,800.0	0.0	0.0	0.0	0.00	0.00	0.00
6,900.0	0.00	0.00	6,900.0	0.0	0.0	0.0	0.00	0.00	0.00
7,000.0	0.00	0.00	7,000.0	0.0	0.0	0.0	0.00	0.00	0.00
7,040.0	0.00	0.00	7,040.0	0.0	0.0	0.0	0.00	0.00	0.00
7,100.0	6.00	12.90	7,099.9	3.1	0.7	3.1	10.00	10.00	0.00
7,200.0	16.00	12.90	7,197.9	21.6	5.0	21.7	10.00	10.00	0.00
7,300.0	26.00	12.90	7,291.2	56.5	12.9	56.7	10.00	10.00	0.00
7,400.0	36.00	12.90	7,376.8	106.7	24.4	107.1	10.00	10.00	0.00
7,500.0	46.00	12.90	7,452.2	170.5	39.1	171.2	10.00	10.00	0.00
7,600.0	56.00	12.90	7,515.0	246.2	56.4	247.1	10.00	10.00	0.00
7,700.0	66.00	12.90	7,563.4	331.3	75.9	332.5	10.00	10.00	0.00
7,800.0	76.00	12.90	7,595.9	423.4	97.0	424.9	10.00	10.00	0.00
7,900.0	86.00	12.90	7,611.6	519.5	119.0	521.4	10.00	10.00	0.00
7,940.0	90.00	12.90	7,613.0	558.5	127.9	560.5	10.00	10.00	0.00
7" Intermediate (Opt 2)									
8,000.0	90.00	11.10	7,613.0	617.2	140.4	619.4	3.00	0.00	-3.00
8,100.0	90.00	8.10	7,613.0	715.8	157.1	718.3	3.00	0.00	-3.00
8,200.0	90.00	5.10	7,613.0	815.1	168.6	817.8	3.00	0.00	-3.00
8,300.0	90.00	2.10	7,613.0	914.9	174.8	917.7	3.00	0.00	-3.00
8,370.1	90.00	360.00	7,613.0	984.9	176.1	987.7	3.00	0.00	-3.00
8,400.0	90.00	360.00	7,613.0	1,014.9	176.1	1,017.7	0.00	0.00	0.00
8,500.0	90.00	360.00	7,613.0	1,114.9	176.1	1,117.6	0.00	0.00	0.00
8,600.0	90.00	360.00	7,613.0	1,214.9	176.1	1,217.6	0.00	0.00	0.00
8,700.0	90.00	360.00	7,613.0	1,314.9	176.1	1,317.6	0.00	0.00	0.00
8,800.0	90.00	360.00	7,613.0	1,414.9	176.1	1,417.6	0.00	0.00	0.00
8,900.0	90.00	360.00	7,613.0	1,514.9	176.1	1,517.6	0.00	0.00	0.00
9,000.0	90.00	360.00	7,613.0	1,614.9	176.1	1,617.6	0.00	0.00	0.00
9,100.0	90.00	360.00	7,613.0	1,714.9	176.1	1,717.6	0.00	0.00	0.00
9,200.0	90.00	360.00	7,613.0	1,814.9	176.1	1,817.5	0.00	0.00	0.00
9,300.0	90.00	360.00	7,613.0	1,914.9	176.1	1,917.5	0.00	0.00	0.00
9,400.0	90.00	360.00	7,613.0	2,014.9	176.1	2,017.5	0.00	0.00	0.00
9,500.0	90.00	360.00	7,613.0	2,114.9	176.1	2,117.5	0.00	0.00	0.00
9,600.0	90.00	360.00	7,613.0	2,214.9	176.1	2,217.5	0.00	0.00	0.00
9,700.0	90.00	360.00	7,613.0	2,314.9	176.1	2,317.5	0.00	0.00	0.00
9,800.0	90.00	360.00	7,613.0	2,414.9	176.1	2,417.5	0.00	0.00	0.00
9,900.0	90.00	360.00	7,613.0	2,514.9	176.1	2,517.4	0.00	0.00	0.00
10,000.0	90.00	360.00	7,613.0	2,614.9	176.1	2,617.4	0.00	0.00	0.00

EOG Resources, Inc.

Planning Report

Database:	EDM_DENVER	Local Co-ordinate Reference:	Well Critter Creek 558-2109H
Company:	Denver Division- Colorado	TVD Reference:	RKB @ 5281.0usft (KB GL+25')
Project:	DJ - Hereford Ranch	MD Reference:	RKB @ 5281.0usft (KB GL+25')
Site:	Critter Creek C21 NENW	North Reference:	True
Well:	Critter Creek 558-2109H	Survey Calculation Method:	Minimum Curvature
Wellbore:	OH		
Design:	APD Plan (Plat Cert 4/6/15)		

Planned Survey									
Measured Depth (usft)	Inclination (°)	Azimuth (°)	Vertical Depth (usft)	+N/-S (usft)	+E/-W (usft)	Vertical Section (usft)	Dogleg Rate (°/100usft)	Build Rate (°/100usft)	Turn Rate (°/100usft)
10,100.0	90.00	360.00	7,613.0	2,714.9	176.1	2,717.4	0.00	0.00	0.00
10,200.0	90.00	360.00	7,613.0	2,814.9	176.1	2,817.4	0.00	0.00	0.00
10,300.0	90.00	360.00	7,613.0	2,914.9	176.1	2,917.4	0.00	0.00	0.00
10,400.0	90.00	360.00	7,613.0	3,014.9	176.0	3,017.4	0.00	0.00	0.00
10,500.0	90.00	360.00	7,613.0	3,114.9	176.0	3,117.4	0.00	0.00	0.00
10,600.0	90.00	360.00	7,613.0	3,214.9	176.0	3,217.3	0.00	0.00	0.00
10,700.0	90.00	360.00	7,613.0	3,314.9	176.0	3,317.3	0.00	0.00	0.00
10,800.0	90.00	360.00	7,613.0	3,414.9	176.0	3,417.3	0.00	0.00	0.00
10,900.0	90.00	360.00	7,613.0	3,514.9	176.0	3,517.3	0.00	0.00	0.00
11,000.0	90.00	360.00	7,613.0	3,614.9	176.0	3,617.3	0.00	0.00	0.00
11,100.0	90.00	360.00	7,613.0	3,714.9	176.0	3,717.3	0.00	0.00	0.00
11,200.0	90.00	360.00	7,613.0	3,814.9	176.0	3,817.3	0.00	0.00	0.00
11,300.0	90.00	360.00	7,613.0	3,914.9	176.0	3,917.3	0.00	0.00	0.00
11,400.0	90.00	360.00	7,613.0	4,014.9	176.0	4,017.2	0.00	0.00	0.00
11,500.0	90.00	360.00	7,613.0	4,114.9	176.0	4,117.2	0.00	0.00	0.00
11,600.0	90.00	360.00	7,613.0	4,214.9	176.0	4,217.2	0.00	0.00	0.00
11,700.0	90.00	360.00	7,613.0	4,314.9	176.0	4,317.2	0.00	0.00	0.00
11,800.0	90.00	360.00	7,613.0	4,414.9	176.0	4,417.2	0.00	0.00	0.00
11,900.0	90.00	360.00	7,613.0	4,514.9	176.0	4,517.2	0.00	0.00	0.00
12,000.0	90.00	360.00	7,613.0	4,614.9	176.0	4,617.2	0.00	0.00	0.00
12,100.0	90.00	360.00	7,613.0	4,714.9	176.0	4,717.1	0.00	0.00	0.00
12,200.0	90.00	360.00	7,613.0	4,814.9	176.0	4,817.1	0.00	0.00	0.00
12,300.0	90.00	360.00	7,613.0	4,914.9	176.0	4,917.1	0.00	0.00	0.00
12,400.0	90.00	360.00	7,613.0	5,014.9	176.0	5,017.1	0.00	0.00	0.00
12,500.0	90.00	360.00	7,613.0	5,114.9	176.0	5,117.1	0.00	0.00	0.00
12,600.0	90.00	360.00	7,613.0	5,214.9	176.0	5,217.1	0.00	0.00	0.00
12,700.0	90.00	360.00	7,613.0	5,314.9	176.0	5,317.1	0.00	0.00	0.00
12,800.0	90.00	360.00	7,613.0	5,414.9	176.0	5,417.0	0.00	0.00	0.00
12,900.0	90.00	360.00	7,613.0	5,514.9	176.0	5,517.0	0.00	0.00	0.00
13,000.0	90.00	360.00	7,613.0	5,614.9	176.0	5,617.0	0.00	0.00	0.00
13,100.0	90.00	360.00	7,613.0	5,714.9	176.0	5,717.0	0.00	0.00	0.00
13,200.0	90.00	360.00	7,613.0	5,814.9	176.0	5,817.0	0.00	0.00	0.00
13,300.0	90.00	360.00	7,613.0	5,914.9	176.0	5,917.0	0.00	0.00	0.00
13,400.0	90.00	360.00	7,613.0	6,014.9	176.0	6,017.0	0.00	0.00	0.00
13,500.0	90.00	360.00	7,613.0	6,114.9	175.9	6,116.9	0.00	0.00	0.00
13,600.0	90.00	360.00	7,613.0	6,214.9	175.9	6,216.9	0.00	0.00	0.00
13,700.0	90.00	360.00	7,613.0	6,314.9	175.9	6,316.9	0.00	0.00	0.00
13,800.0	90.00	360.00	7,613.0	6,414.9	175.9	6,416.9	0.00	0.00	0.00
13,900.0	90.00	360.00	7,613.0	6,514.9	175.9	6,516.9	0.00	0.00	0.00
14,000.0	90.00	360.00	7,613.0	6,614.9	175.9	6,616.9	0.00	0.00	0.00
14,100.0	90.00	360.00	7,613.0	6,714.9	175.9	6,716.9	0.00	0.00	0.00
14,200.0	90.00	360.00	7,613.0	6,814.9	175.9	6,816.9	0.00	0.00	0.00
14,300.0	90.00	360.00	7,613.0	6,914.9	175.9	6,916.8	0.00	0.00	0.00
14,400.0	90.00	360.00	7,613.0	7,014.9	175.9	7,016.8	0.00	0.00	0.00
14,500.0	90.00	360.00	7,613.0	7,114.9	175.9	7,116.8	0.00	0.00	0.00
14,600.0	90.00	360.00	7,613.0	7,214.9	175.9	7,216.8	0.00	0.00	0.00
14,700.0	90.00	360.00	7,613.0	7,314.9	175.9	7,316.8	0.00	0.00	0.00
14,800.0	90.00	360.00	7,613.0	7,414.9	175.9	7,416.8	0.00	0.00	0.00
14,900.0	90.00	360.00	7,613.0	7,514.9	175.9	7,516.8	0.00	0.00	0.00
15,000.0	90.00	360.00	7,613.0	7,614.9	175.9	7,616.7	0.00	0.00	0.00
15,100.0	90.00	360.00	7,613.0	7,714.9	175.9	7,716.7	0.00	0.00	0.00
15,200.0	90.00	360.00	7,613.0	7,814.9	175.9	7,816.7	0.00	0.00	0.00
15,300.0	90.00	360.00	7,613.0	7,914.9	175.9	7,916.7	0.00	0.00	0.00
15,400.0	90.00	360.00	7,613.0	8,014.9	175.9	8,016.7	0.00	0.00	0.00

EOG Resources, Inc.

Planning Report

Database:	EDM_DENVER	Local Co-ordinate Reference:	Well Critter Creek 558-2109H
Company:	Denver Division- Colorado	TVD Reference:	RKB @ 5281.0usft (KB GL+25')
Project:	DJ - Hereford Ranch	MD Reference:	RKB @ 5281.0usft (KB GL+25')
Site:	Critter Creek C21 NENW	North Reference:	True
Well:	Critter Creek 558-2109H	Survey Calculation Method:	Minimum Curvature
Wellbore:	OH		
Design:	APD Plan (Plat Cert 4/6/15)		

Planned Survey										
Measured Depth (usft)	Inclination (°)	Azimuth (°)	Vertical Depth (usft)	+N/-S (usft)	+E/-W (usft)	Vertical Section (usft)	Dogleg Rate (°/100usft)	Build Rate (°/100usft)	Turn Rate (°/100usft)	
15,500.0	90.00	360.00	7,613.0	8,114.9	175.9	8,116.7	0.00	0.00	0.00	
15,600.0	90.00	360.00	7,613.0	8,214.9	175.9	8,216.7	0.00	0.00	0.00	
15,700.0	90.00	360.00	7,613.0	8,314.9	175.9	8,316.6	0.00	0.00	0.00	
15,800.0	90.00	360.00	7,613.0	8,414.9	175.9	8,416.6	0.00	0.00	0.00	
15,900.0	90.00	360.00	7,613.0	8,514.9	175.9	8,516.6	0.00	0.00	0.00	
16,000.0	90.00	360.00	7,613.0	8,614.9	175.9	8,616.6	0.00	0.00	0.00	
16,100.0	90.00	360.00	7,613.0	8,714.9	175.9	8,716.6	0.00	0.00	0.00	
16,200.0	90.00	360.00	7,613.0	8,814.9	175.9	8,816.6	0.00	0.00	0.00	
16,300.0	90.00	360.00	7,613.0	8,914.9	175.9	8,916.6	0.00	0.00	0.00	
16,400.0	90.00	360.00	7,613.0	9,014.9	175.9	9,016.5	0.00	0.00	0.00	
16,500.0	90.00	360.00	7,613.0	9,114.9	175.9	9,116.5	0.00	0.00	0.00	
16,600.0	90.00	360.00	7,613.0	9,214.9	175.8	9,216.5	0.00	0.00	0.00	
16,700.0	90.00	360.00	7,613.0	9,314.9	175.8	9,316.5	0.00	0.00	0.00	
16,800.0	90.00	360.00	7,613.0	9,414.9	175.8	9,416.5	0.00	0.00	0.00	
16,900.0	90.00	360.00	7,613.0	9,514.9	175.8	9,516.5	0.00	0.00	0.00	
17,000.0	90.00	360.00	7,613.0	9,614.9	175.8	9,616.5	0.00	0.00	0.00	
17,100.0	90.00	360.00	7,613.0	9,714.9	175.8	9,716.5	0.00	0.00	0.00	
17,200.0	90.00	360.00	7,613.0	9,814.9	175.8	9,816.4	0.00	0.00	0.00	
17,300.0	90.00	360.00	7,613.0	9,914.9	175.8	9,916.4	0.00	0.00	0.00	
17,400.0	90.00	360.00	7,613.0	10,014.9	175.8	10,016.4	0.00	0.00	0.00	
17,500.0	90.00	360.00	7,613.0	10,114.9	175.8	10,116.4	0.00	0.00	0.00	
17,600.0	90.00	360.00	7,613.0	10,214.9	175.8	10,216.4	0.00	0.00	0.00	
17,700.0	90.00	360.00	7,613.0	10,314.9	175.8	10,316.4	0.00	0.00	0.00	
17,800.0	90.00	360.00	7,613.0	10,414.9	175.8	10,416.4	0.00	0.00	0.00	
17,900.0	90.00	360.00	7,613.0	10,514.9	175.8	10,516.3	0.00	0.00	0.00	
17,997.0	90.00	360.00	7,613.0	10,611.9	175.8	10,613.3	0.00	0.00	0.00	
5 1/2" Prod (Opt 1) - 4 1/2" Liner (Opt 2)										
17,997.4	90.00	360.00	7,613.0	10,612.2	175.8	10,613.7	0.00	0.00	0.00	

Design Targets										
Target Name	Dip Angle (°)	Dip Dir. (°)	TVD (usft)	+N/-S (usft)	+E/-W (usft)	Northing (usft)	Easting (usft)	Latitude	Longitude	
Critter Creek 558-2109H	0.00	0.00	7,613.0	10,612.2	175.8	587,930.22	2,293,240.64	40° 56' 32.796 N	104° 26' 19.034 W	
- hit/miss target										
- Shape										
- plan hits target center										
- Point										

Casing Points					
Measured Depth (usft)	Vertical Depth (usft)	Name	Casing Diameter (")	Hole Diameter (")	
1,399.0	1,399.0	9 5/8" Surface	9-5/8	13-1/2	
7,940.0	7,613.0	7" Intermediate (Opt 2)	7	8-3/4	
17,997.0	7,613.0	5 1/2" Prod (Opt 1)	5-1/2	7-7/8	
17,997.0	7,613.0	4 1/2" Liner (Opt 2)	4-1/2	6-1/8	