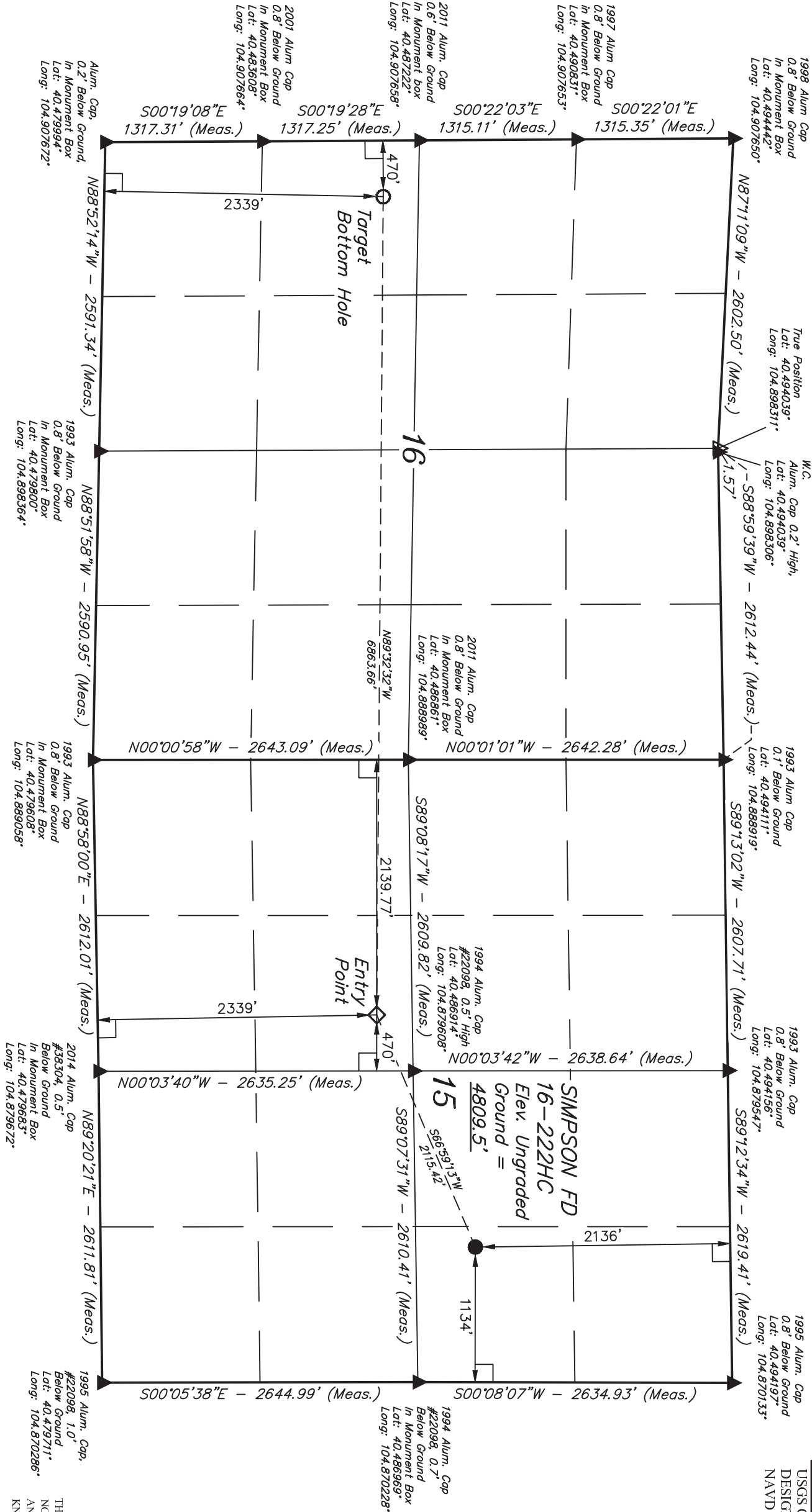
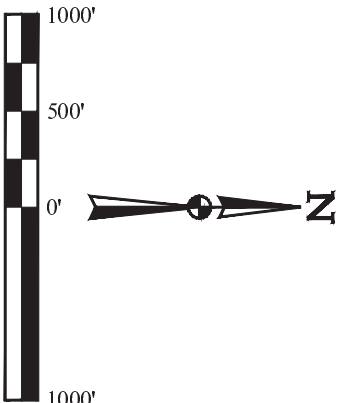


T6N, R67W, 6th P.M.

GREAT WESTERN OIL & GAS COMPANY

SIMPSON FD 16-222HC  
SE 1/4 NE 1/4, SECTION 15, T6N, R67W, 6th P.M.  
WELD COUNTY, COLORADO

BASIS OF BEARINGS  
BASIS OF ELEVATION  
USGS COOPERATIVE BASE NETWORK CONTROL STATION,  
DESIGNATION "VERMILYEA". NGS DATA SHEET LISTS THE  
NAVD 88 ELEVATION AS BEING 5026 FEET.



THIS IS TO CERTIFY THAT THE ABOVE INFORMATION PREPARED AND PROVIDED  
NOTES OF ACTUAL SURVEYS MADE BY ME OR UNDER MY SUPERVISION  
AND THAT THE SAME ARE TRUE AND CORRECT TO THE BEST OF MY  
KNOWLEDGE AND BELIEF.



UTEL, LLC  
Corporate Office \* 85 South 200 East  
Vernal, UT 84078 \* (435) 789-1017

- LEGEND:**
- = PROPOSED WELLHEAD.
  - = TARGET BOTTOM HOLE.
  - ◇ = ENTRY POINT
  - ▲ = SECTION CORNERS LOCATED.
  - △ = SECTION CORNERS RE-ESTABLISHED.  
(Not Set on Ground.)
- = 90° SYMBOL

NAD 83 (TARGET BOTTOM HOLE)	NAD 83 (ENTRY POINT)	NAD 83 (SURFACE LOCATION)
LATITUDE = 40°29'10.96" (40.486378)	LATITUDE = 40°29'09.92" (40.486089)	LATITUDE = 40°29'17.94" (40.488317)
LONGITUDE = 104°54'21.49" (104.905969)	LONGITUDE = 104°52'52.70" (104.881306)	LONGITUDE = 104°52'27.43" (104.874286)
NAD 27 (TARGET BOTTOM HOLE)	NAD 27 (ENTRY POINT)	NAD 27 (SURFACE LOCATION)
LATITUDE = 40°29'11.03" (40.486397)	LATITUDE = 40°29'09.98" (40.486106)	LATITUDE = 40°29'18.01" (40.488336)
LONGITUDE = 104°54'19.59" (104.905442)	LONGITUDE = 104°52'50.80" (104.880778)	LONGITUDE = 104°52'25.33" (104.873758)

PDOP = 1.4

SURVEYED BY: DALLAS NIELSEN, D.W.		DATE: 03-13-15
DRAWN BY: J.W.	DATE DRAWN: 12-29-14	
SCALE: 1" = 1000'	REVISED: 04-27-15 J.S.	
WELL LOCATION PLAT		