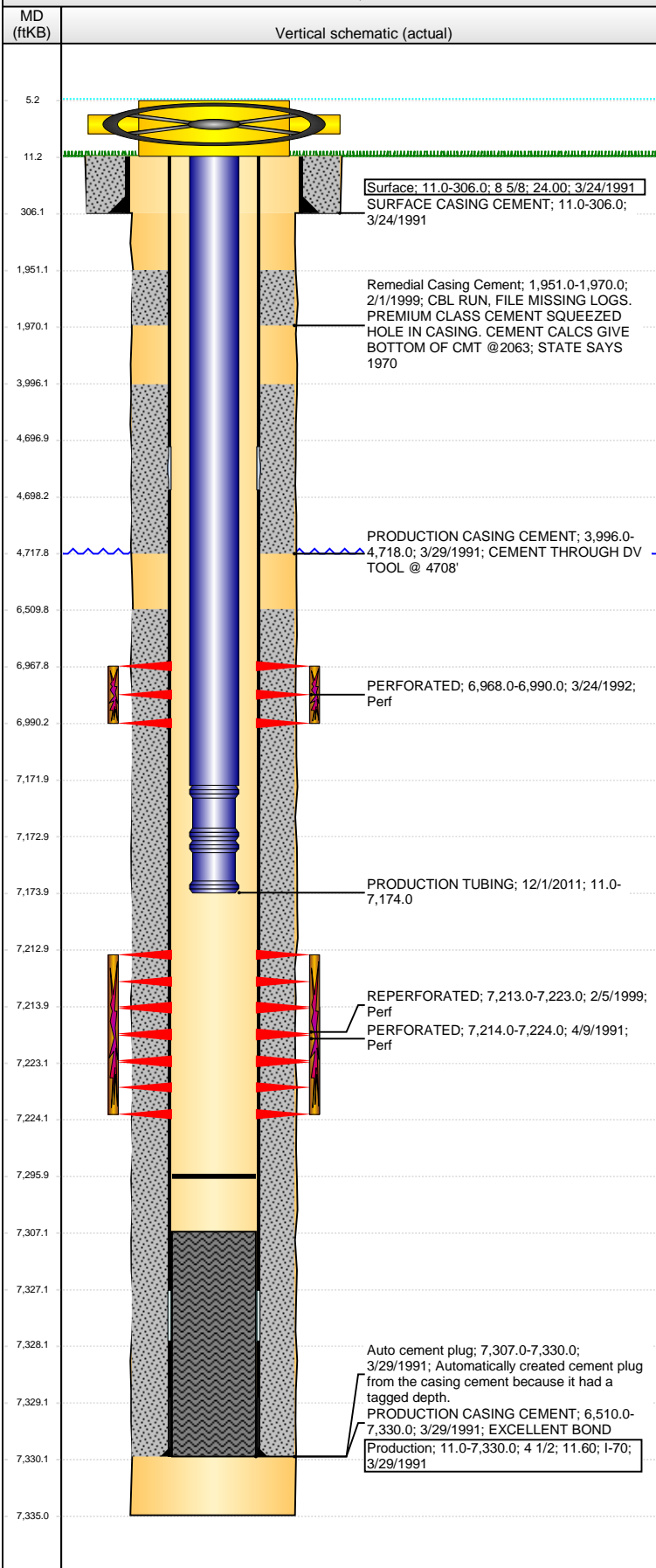


Well Name: EWING 44-10

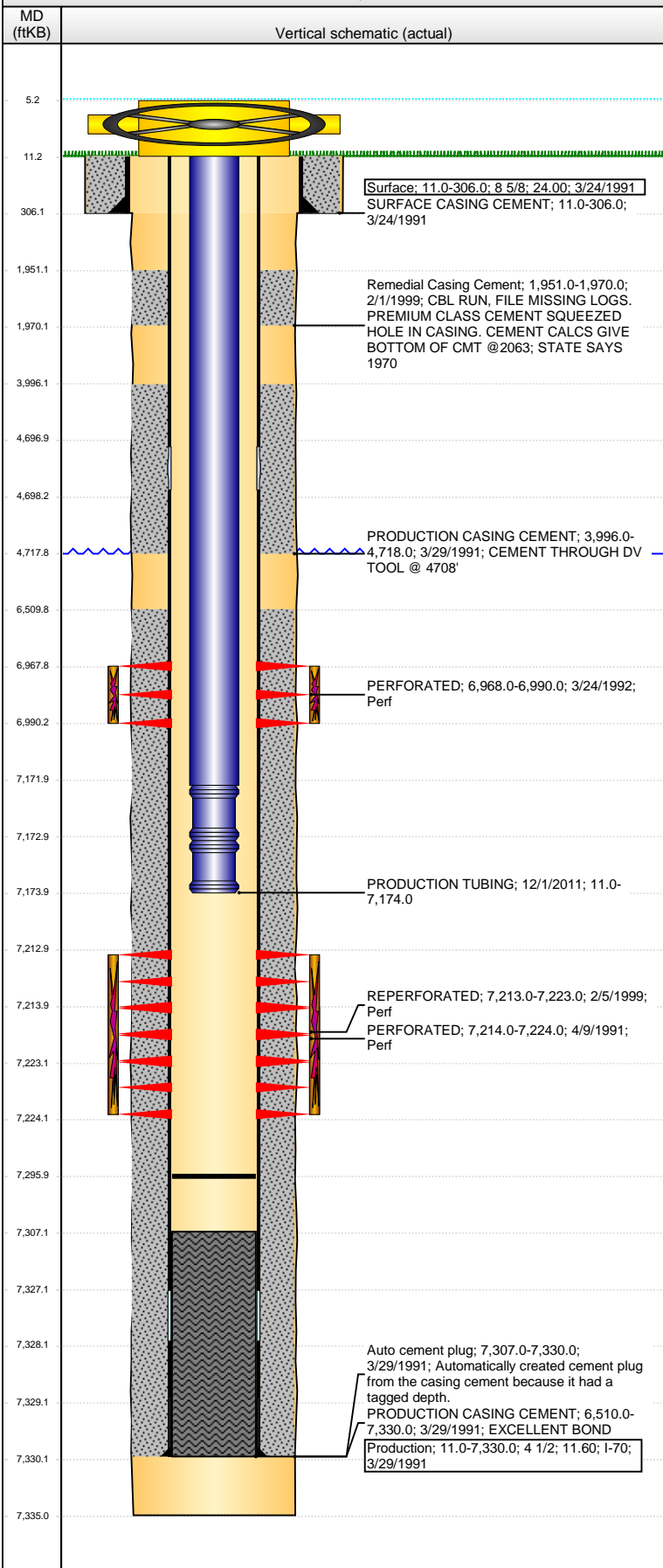
VERTICAL - ORIGINAL HOLE, 7/22/2015 4:21:49 PM



Well Header			
API	05-123-14937	Business Unit	DJ BASIN
District	15	Well Config	VERTICAL
Original KB Elevation (ft)	4,726.00	KB - GL / MSL (ftKB)	11.00
Spud Date	3/24/1991	P & A Date	
Comment WELL DATA SKETCHY			
Directions To Well			
Current PBTD (ftKB) ORIGINAL HOLE - 7,296.0			
Surface Location (Congressional)			
Quarter 1	Quarter 2	Quarter 3	Quarter 4
SE	SE	SE	SE
Section	Township	Twntshp N...	Range
10	4 N		66
Rng E/W Dir	W		
Bottom Hole Location			
North-South Distance (ft)	From N or S Line	East-West Distance (ft)	From E or W Line
Plug Back Total Depths			
Date	Depth (ftKB)	Method	Com
3/28/1991	7,307.0	CASED HOLE LOG	DEPTH LOGGER
3/29/1991	7,299.0	CASING TALLY	TOP OF FLOAT COLLAR
12/1/2011	7,296.0	TAG	CLEANOUT
Wellbore Sections			
Section Des	Size (in)	Act Top, MD (ftKB)	Act Btm, MD (ftKB)
SURFACE	12 1/4	11.0	306.0
PRODUCTION	7 7/8	306.0	7,335.0
Zone Statuses			
Zone Name	Status Date	Status	Fluid Type
NIOBRARA	4/14/2014	PR	Gas
CODELL	5/12/1991	PR	Gas
NIOBRARA-CO...	4/14/2014	PR	Gas
Job		Prod Method	
RECOMPLETION, 3/26/1992 00:00			
DRILLING/COMPLETION - ORIGINAL, 3/24/19...			
COMMINGLE ZONES, 4/8/1992 00:00			
Casing Strings			
Csg Des	Run Date	OD (in)	Wt/Len (lb/ft)
Surface	3/24/1991	8 5/8	24.00
Production	3/29/1991	4 1/2	11.60
Grade	Top, MD (ftKB)	MD (ftKB)	
I-70	11.0	7,330.0	
Cement			
Des	Top (ftKB)	Btm (ftKB)	
SURFACE CASING CEMENT	11.0	306.0	
PRODUCTION CASING CEMENT	3,996.0	4,718.0	
PRODUCTION CASING CEMENT	6,510.0	7,330.0	
Remedial Casing Cement	1,951.0	1,970.0	
Tubing Components			
Item Des	OD (in)	Wt (lb/ft)	Grade
Tubing	2 3/8	4.60	J-55
SEATING NIPPLE, ,	2 3/8		
NOTCHED COLLAR, ,	2 3/8		
Jts	Len (ft)		
226	7,161.00		
1	1.00		
1	1.00		
Perforation Data			
Zone	Bnch/Stg	Entered Shot Total	Top (ftKB)
NIOBRARA, ORIGINAL HOLE		22	6,968.00
CODELL, ORIGINAL HOLE		40	7,213.00
CODELL, ORIGINAL HOLE		20	7,214.00
Btm (ftKB)	Date		
6,990.00	3/24/1992		
7,223.00	2/5/1999		
7,224.00	4/9/1991		
Stimulations & Treatments			
Bnch/Stg	Date	Zone	Primary Job Type
	4/10/1991	CODELL, ORIGINAL HOLE	DRILLING/COMPLETION - ORIGINAL
Comment			
Total Add Amount	Total Clean Volume...	Vol Slurry Tot (gal)	Vol Gas Tot (MCF)
Proppant Bulk Sand 250000		77952.00	
lb			
Avg Treat Pressure (psi)	Max Treat Pressure (psi)	Avg Treat Rate (bbl/min)	Max Treat Rate (bbl/min)
3,200.0		13.10	

Well Name: EWING 44-10

VERTICAL - ORIGINAL HOLE, 7/22/2015 4:21:51 PM



Stimulations & Treatments				
Bnch/Stg	Date	Zone	Primary Job Type	
	3/27/1992	NIOBRARA, ORIGINAL HOLE	RECOMPLETION	
Comment				
Total Add Amount		Total Clean Volume...	Vol Slurry Tot (gal)	Vol Gas Tot (MCF)
Proppant Bulk Sand 110000 lb				
Avg Treat Pressure (psi)		Max Treat Pressure (psi)	Avg Treat Rate (bbl/min)	Max Treat Rate (bbl/min)
3,900.0			25.00	
Bnch/Stg	Date	Zone	Primary Job Type	
	2/9/1999	CODELL, ORIGINAL HOLE	RE-FRAC	
Comment				
REPERF CDL 2/5/99, REFRAC CDL 2/9/99				
Total Add Amount		Total Clean Volume...	Vol Slurry Tot (gal)	Vol Gas Tot (MCF)
Proppant Bulk Sand 185100 lb				
Avg Treat Pressure (psi)		Max Treat Pressure (psi)	Avg Treat Rate (bbl/min)	Max Treat Rate (bbl/min)
4,567.0		5,896.0	13.70	
Other In Hole				
Run Date	Des	OD (in)	Top (ftKB)	Btm (ftKB)
Logs				
Date	Type	Top, MD (ftKB)	Btm, MD (ftKB)	
3/28/1991	COMPENSATED DENSITY	4,000.0	7,324.0	
3/28/1991	INDUCTION	307.0	7,339.0	
4/8/1991	CBL/CCL/GR	3,996.0	7,307.0	