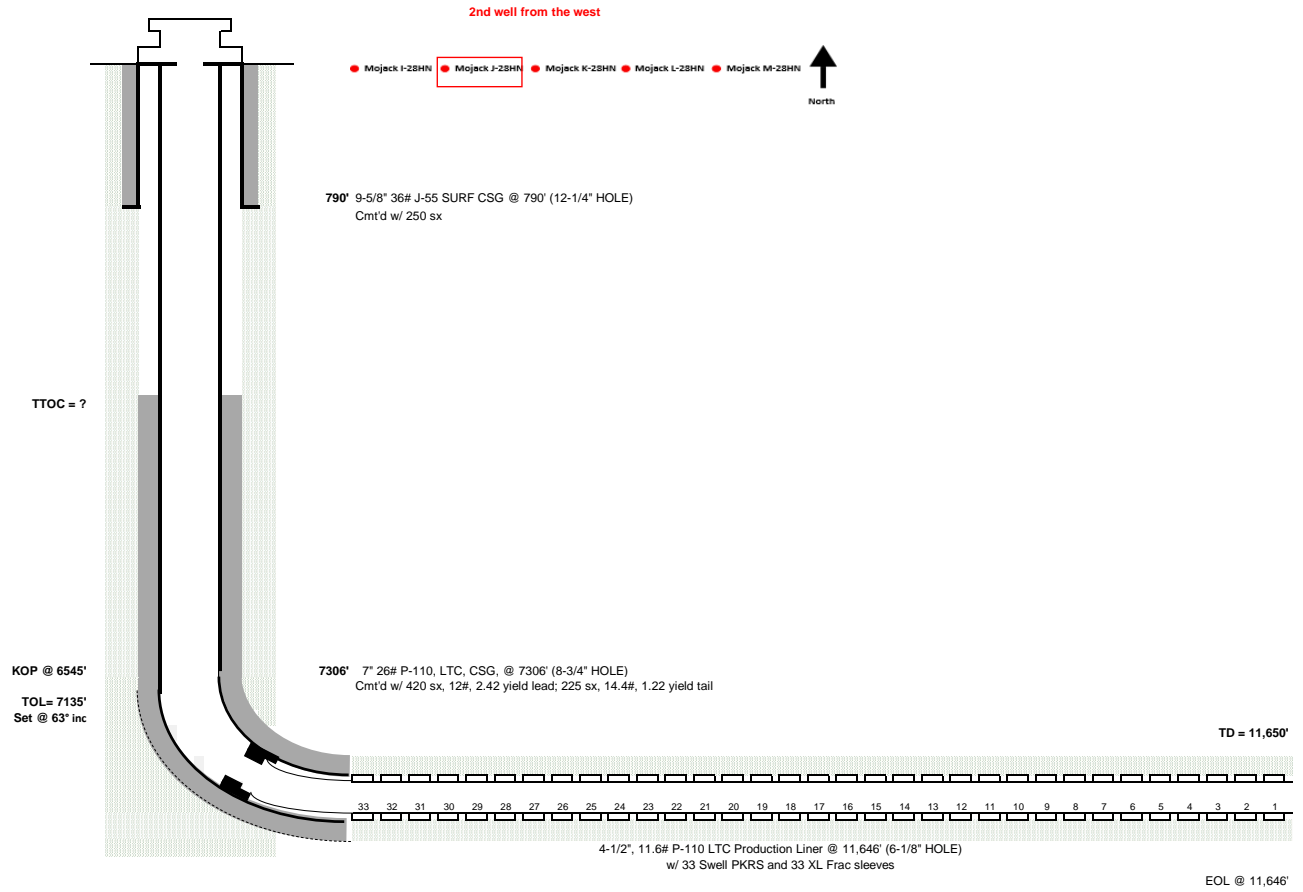


# WELLBORE DIAGRAM

**Bayswater E&P**  
**Mojack J-28HN**  
 230' FNL, 1788' FEL  
 NWNE Sec 28-T7N-R64W  
 Weld County, CO  
 05-123-39824

KB 4922  
 GL 4899  
 23

3/3/2015  
 JRR



## COMMENTS:

4-1/2" LNR PKR @ MD: 33 @ 7344', 32 @ 7447', 31 @ 7579', 30 @ 7711', 29 @ 7841', 28 @ 7973', 27 @ 8106', 26 @ 8238', 25 @ 8370', 24 @ 8503', 23 @ 8635', 22 @ 8767', 21 @ 8900', 20 @ 9033', 19 @ 9165', 18 @ 9297', 17 @ 9429', 16 @ 9559', 15 @ 9692', 14 @ 9824', 13 @ 9956', 12 @ 10089', 11 @ 10221', 10 @ 10352', 9 @ 10482', 8 @ 10614', 7 @ 10746', 6 @ 10879', 5 @ 11010', 4 @ 11140', 3 @ 11268', 2 @ 11401', 1 @ 11533'

4-1/2" LNR SLEEVES @ MD: 33 @ 7420', 32 @ 7551', 31 @ 7683', 30 @ 7814', 29 @ 7946', 28 @ 8078', 27 @ 8165', 26 @ 8297', 25 @ 8429', 24 @ 8561', 23 @ 8694', 22 @ 8826', 21 @ 8959', 20 @ 9092', 19 @ 9224', 18 @ 9356', 17 @ 9488', 16 @ 9618', 15 @ 9751', 14 @ 9883', 13 @ 10015', 12 @ 10148', 11 @ 10279', 10 @ 10409', 9 @ 10541', 8 @ 10673', 7 @ 10805', 6 @ 10937', 5 @ 11069', 4 @ 11195', 3 @ 11327', 2 @ 11460', 1 @ 11592'

\* DEPTHS ARE APPROXIMATE