



CEMENT BOND LOG  
GAMMA-RAY  
CCL

Company	BLACK HILLS PLATEAU PRODUCTION, LLC
Well	HDU 9-11BH
Field	SOUTH SHALE RIDGE
County	GARFIELD
State	COLORADO
Company BLACK HILLS PLATEAU	
Well HDU 9-11BH	
Field SOUTH SHALE RIDGE	
County GARFIELD State COLORADO	
Location:	API # : 05-045-21933
Permanent Datum	SHL:NENE S9 T8S R98W
Log Measured From	BHL: NWSW S15 T8S R98W
Drilling Measured From	SEC S9 TWP 8S RGE 98W
GROUND LEVEL Elevation	
KELLY BUSHING	
KELLY BUSHING	
Other Services	
NONE	
Elevation	
K.B. 5546'	
D.F. 5547'	
G.L. 5521'	

Date 30-JUNE-2015

Run Number	ONE
Depth Driller	17,343'
Depth Logger	7950'
Bottom Logged Interval	7950'
Top Log Interval	6200'
Open Hole Size	
Type Fluid	WATER
Density / Viscosity	8.35#
Max. Recorded Temp.	
Estimated Cement Top	6520'
Time Well Ready	ROA
Time Logger on Bottom	7:00AM
Equipment Number	142
Location	GRAND JUNCTION
Recorded By	V. AVILA
Witnessed By	MR. MIKE DURHAM

Borehole Record		Tubing Record					
Run Number	Bit	From	To	Size	Weight	From	To

Casing Record	Size	Wgt/Ft	Top	Bottom
Surface String	10 3/4	40.5#		
Prot. String				
Production String				
Liner				

<<< Fold Here >>>

All interpretations are opinions based on inferences from electrical or other measurements and we cannot and do not guarantee the accuracy or correctness of any interpretation, and we shall not, except in the case of gross or willful negligence on our part, be liable or responsible for any loss, costs, damages, or expenses incurred or sustained by anyone resulting from any interpretation made by any of our officers, agents or employees. These interpretations are also subject to our general terms and conditions set out in our current Price Schedule.

Comments

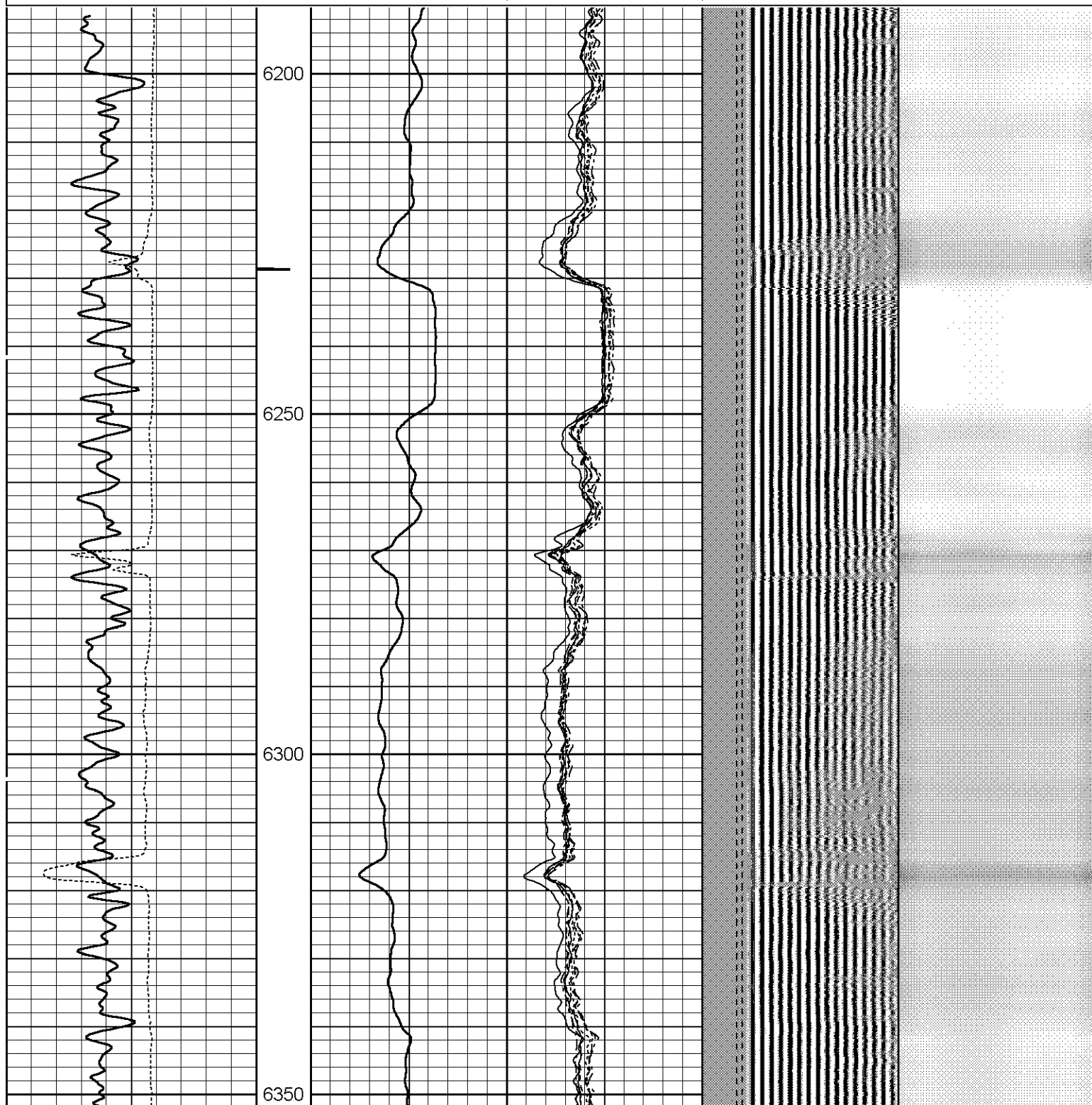
LOG CORRALATED TO CROSSOVER SUB VIA PIPE TALLY

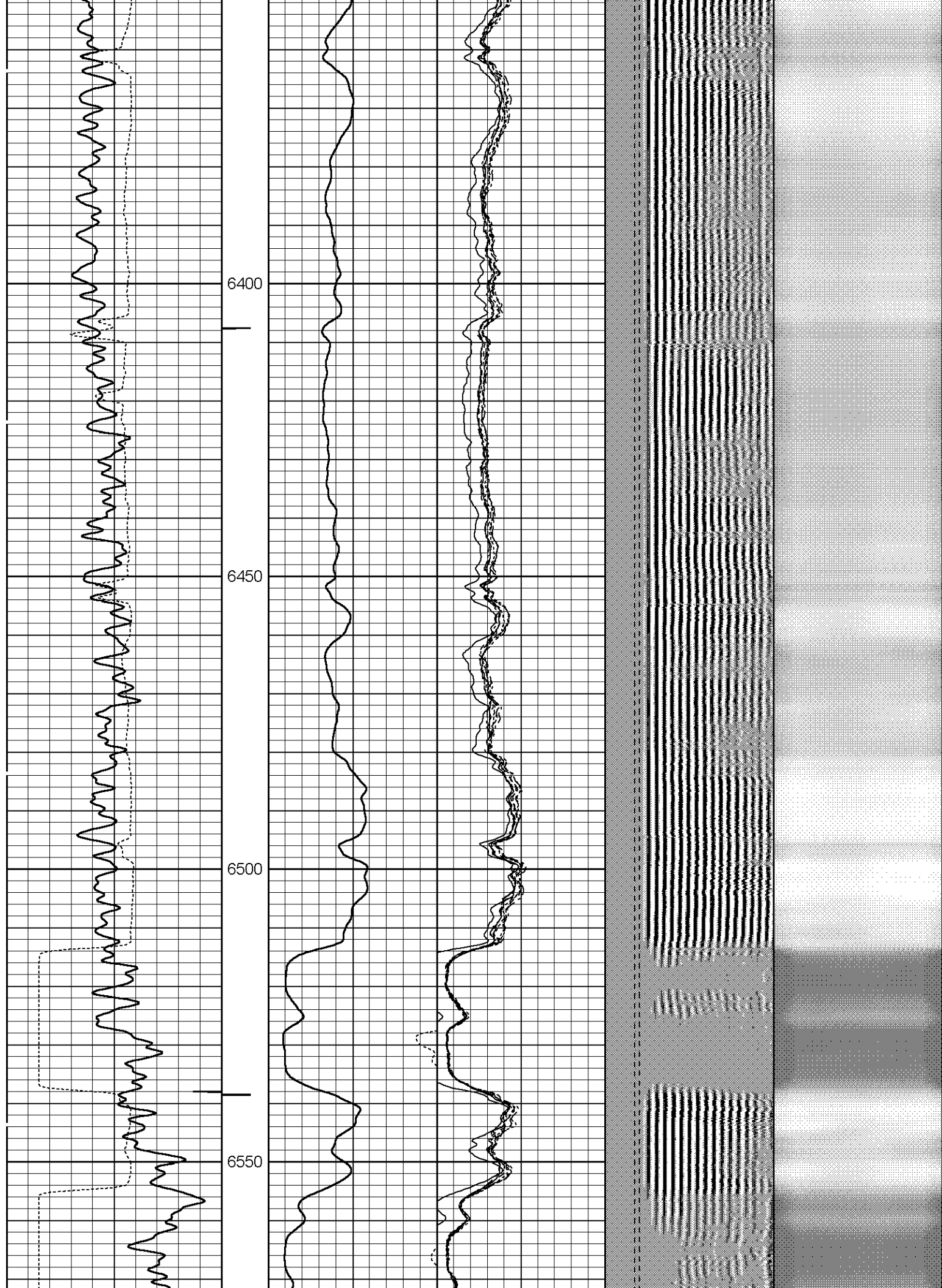


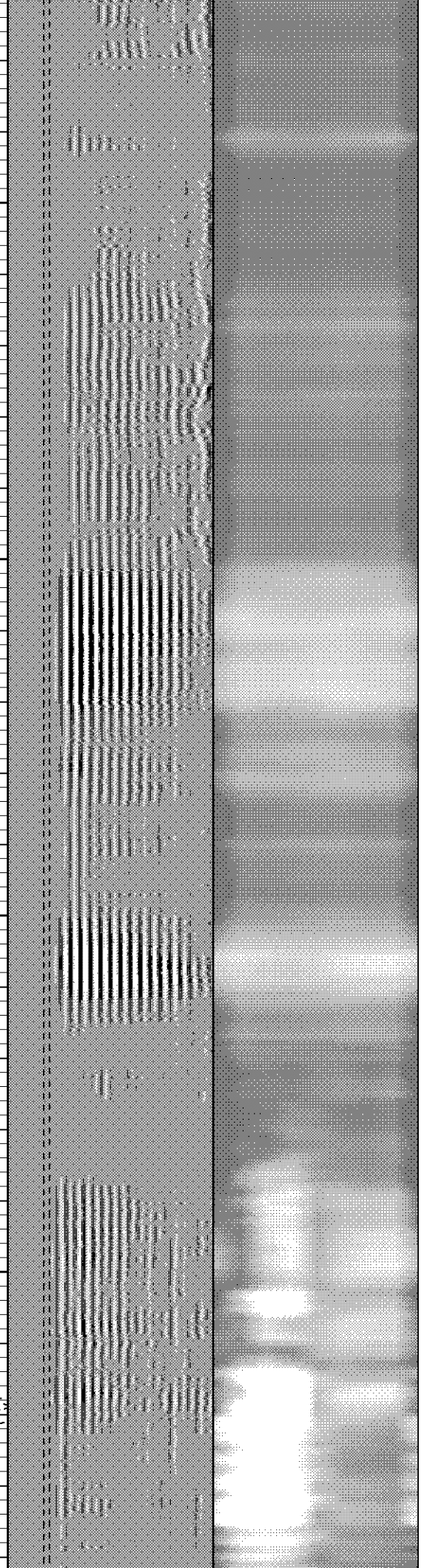
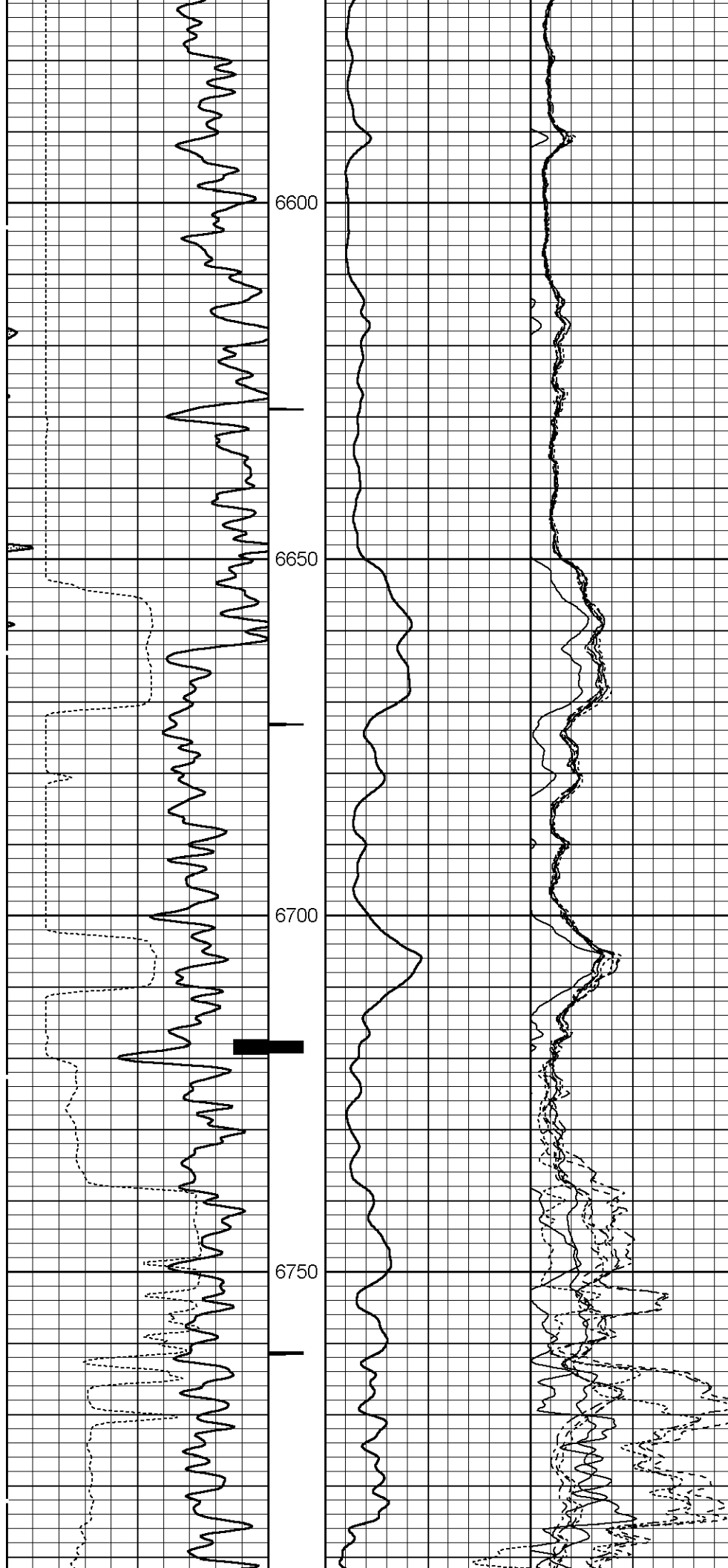
MAIN PASS 0 PSI

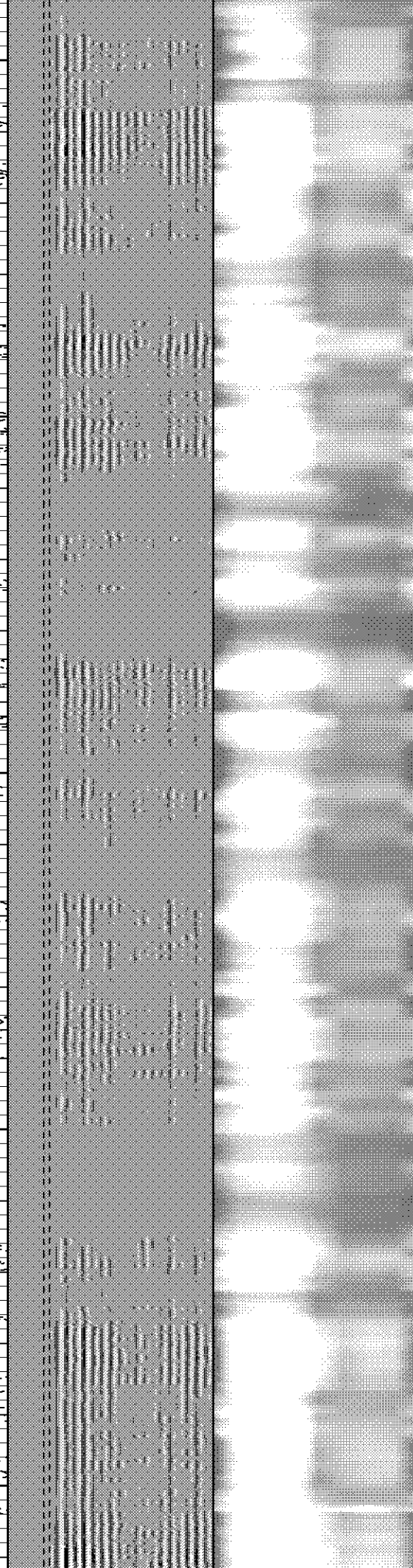
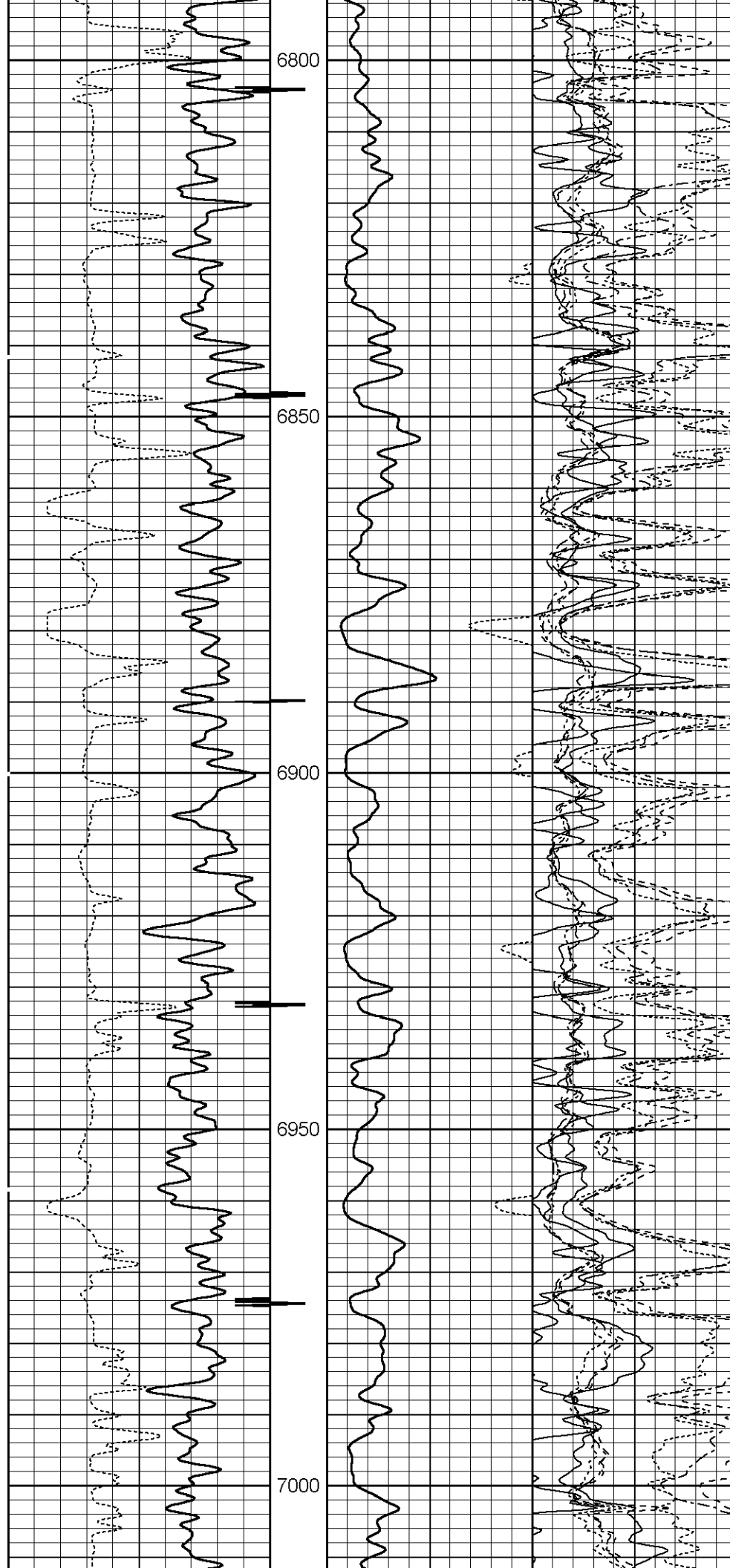
Database File: bhh.db  
 Dataset Pathname: pass21  
 Presentation Format: rbl55  
 Dataset Creation: Tue Jun 30 07:07:59 2015 by Log Std Casedhole 08121  
 Charted by: Depth in Feet scaled 1:240

343	TT (usec)	243	<div>CCL</div>	0	Amplitude (mV)	100	-5	AMPS2	150	200	VDL	1200	Cement Map
0	GR (GAPI)	150		Amplified Amplitude	-5	AMPS3	150	<div><div></div></div>	1	80			
0	LTEN (lb)	4000		0	(mV)	10	-5	AMPS4	150	Free Pipe Gate	<div><div></div></div>		
					-5	AMPS5	150						
					-5	AMPS6	150						
					-5	AMPS7	150						
					-5	AMPS8	150						
					-5	AMPS1	150						

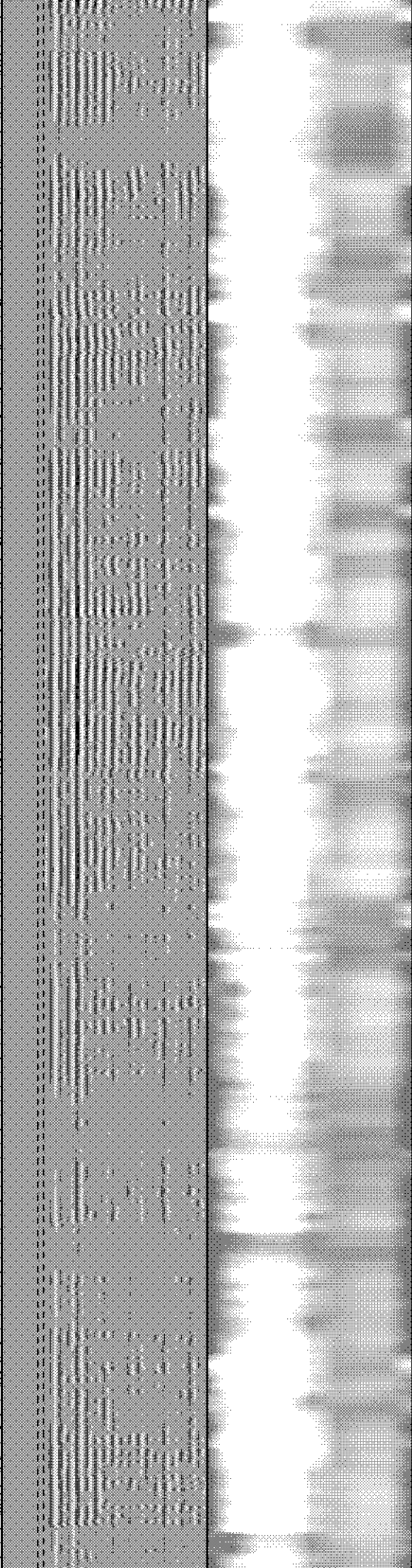
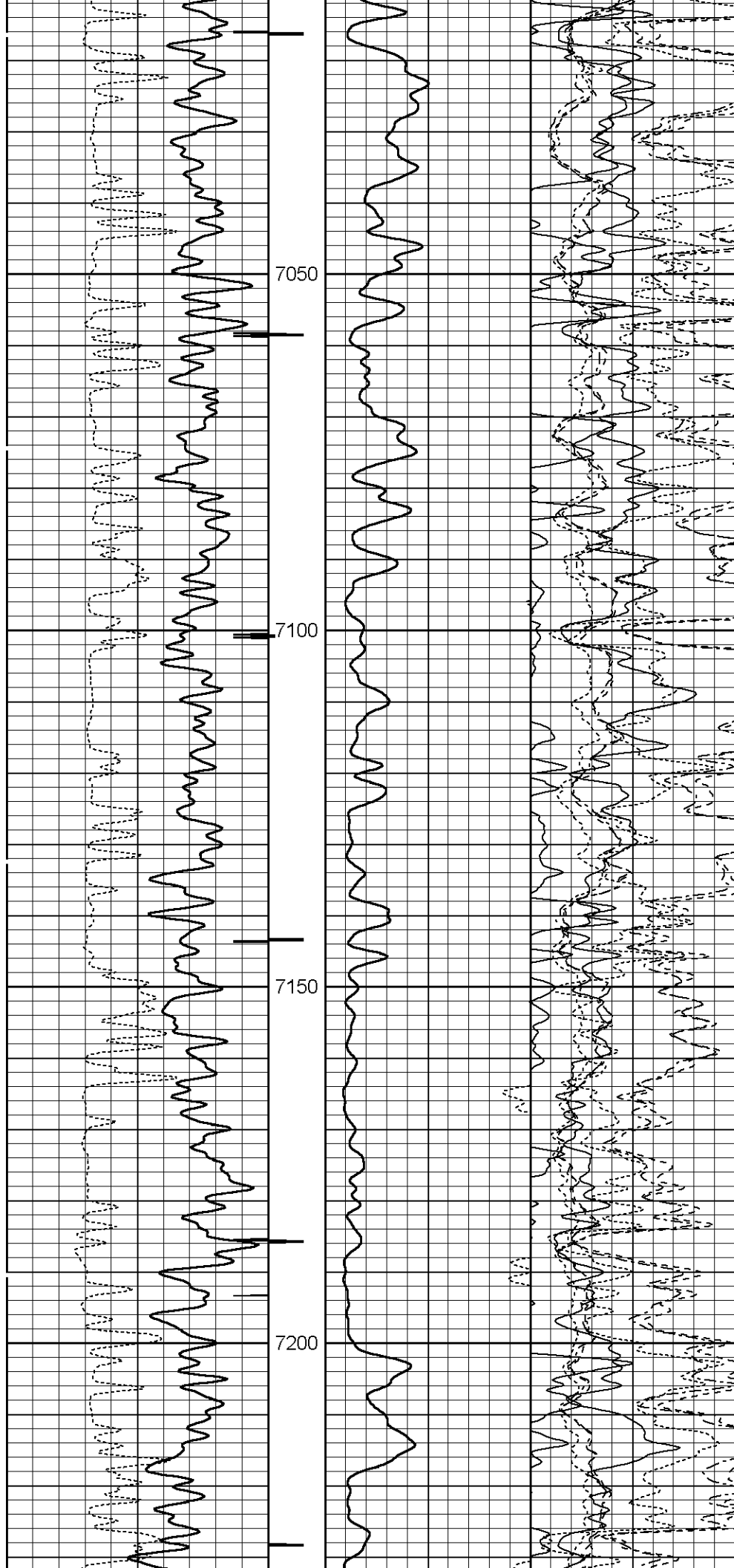


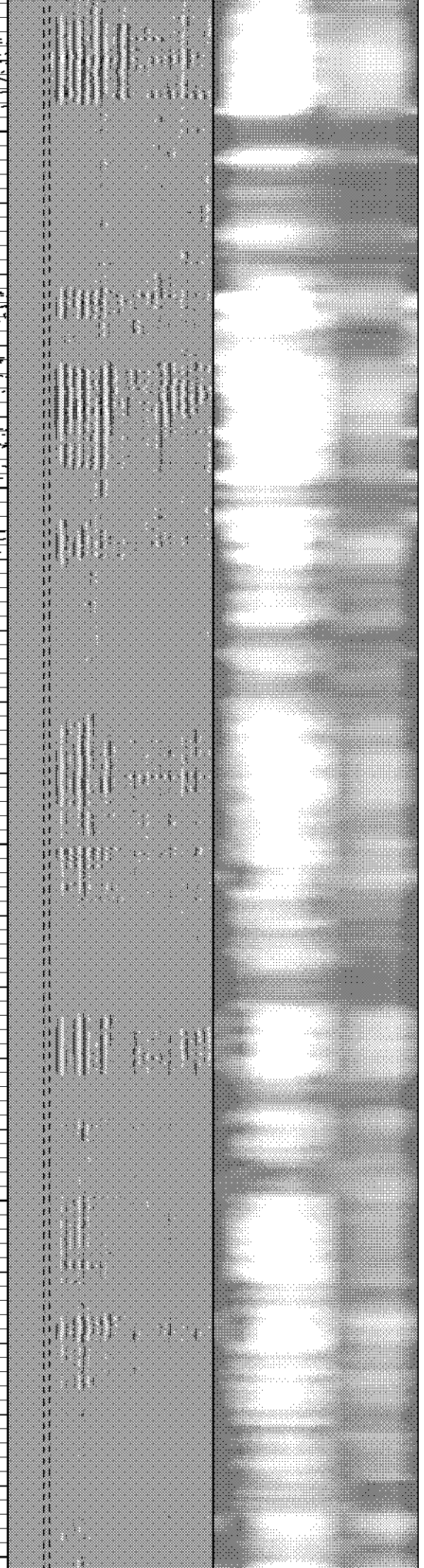
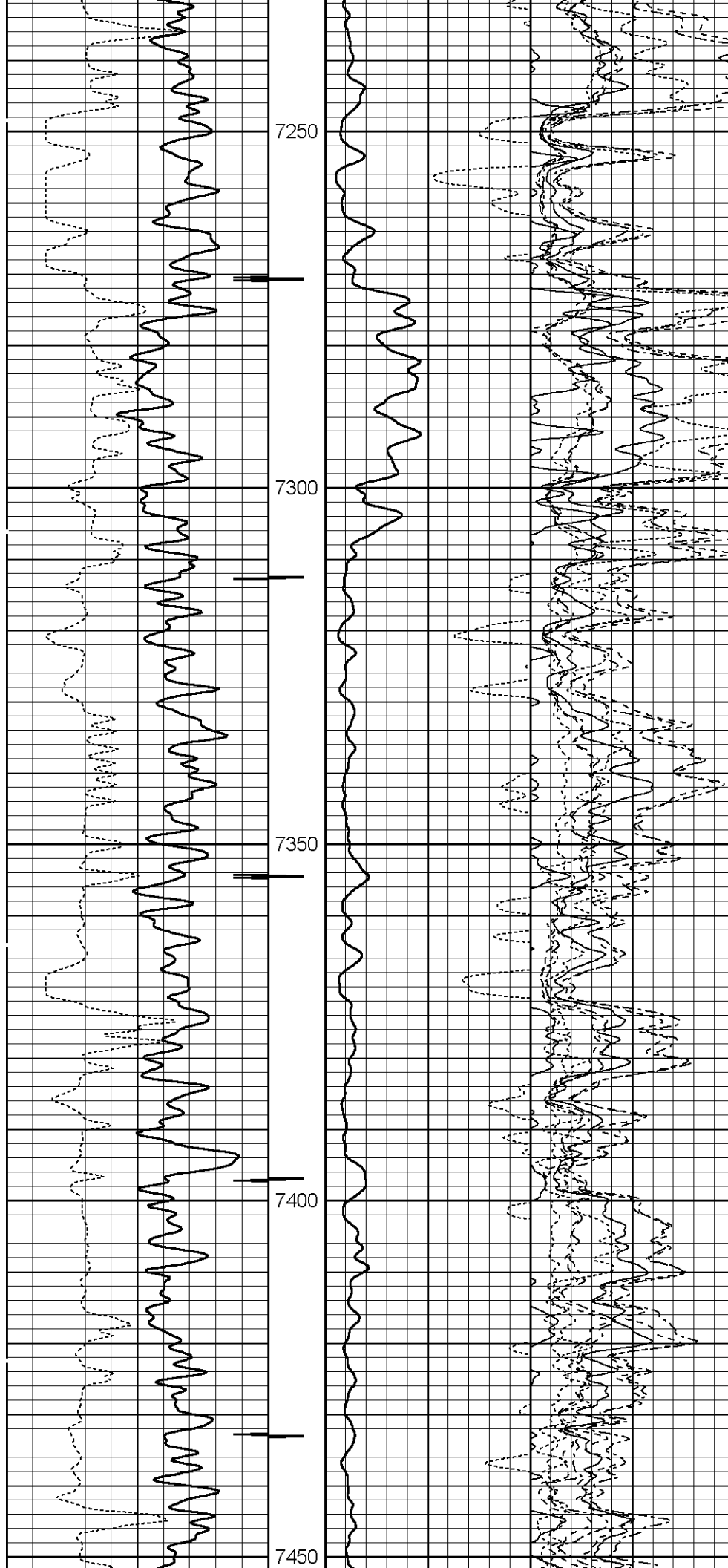


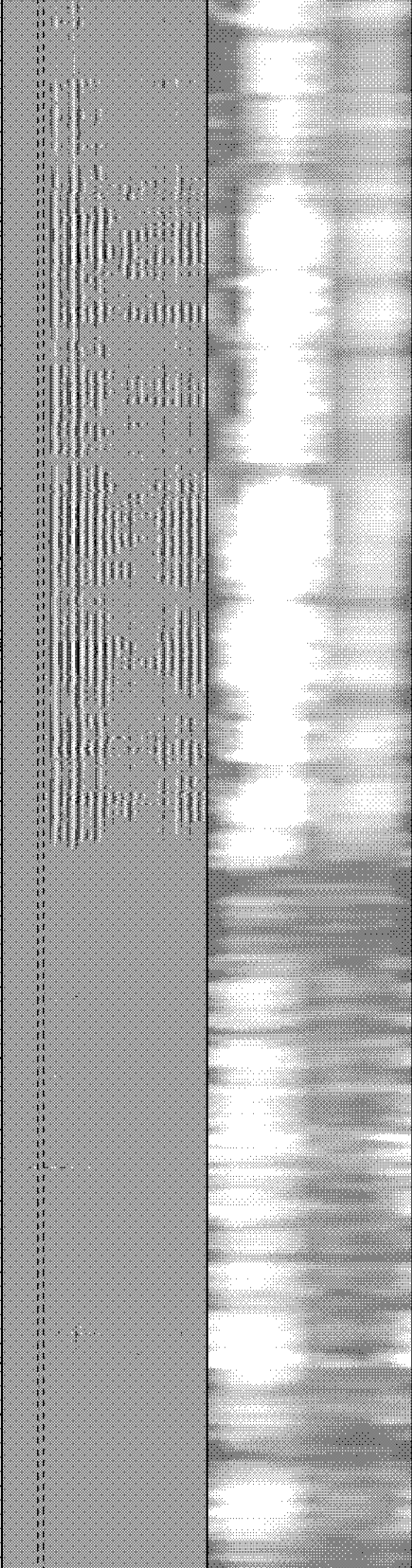
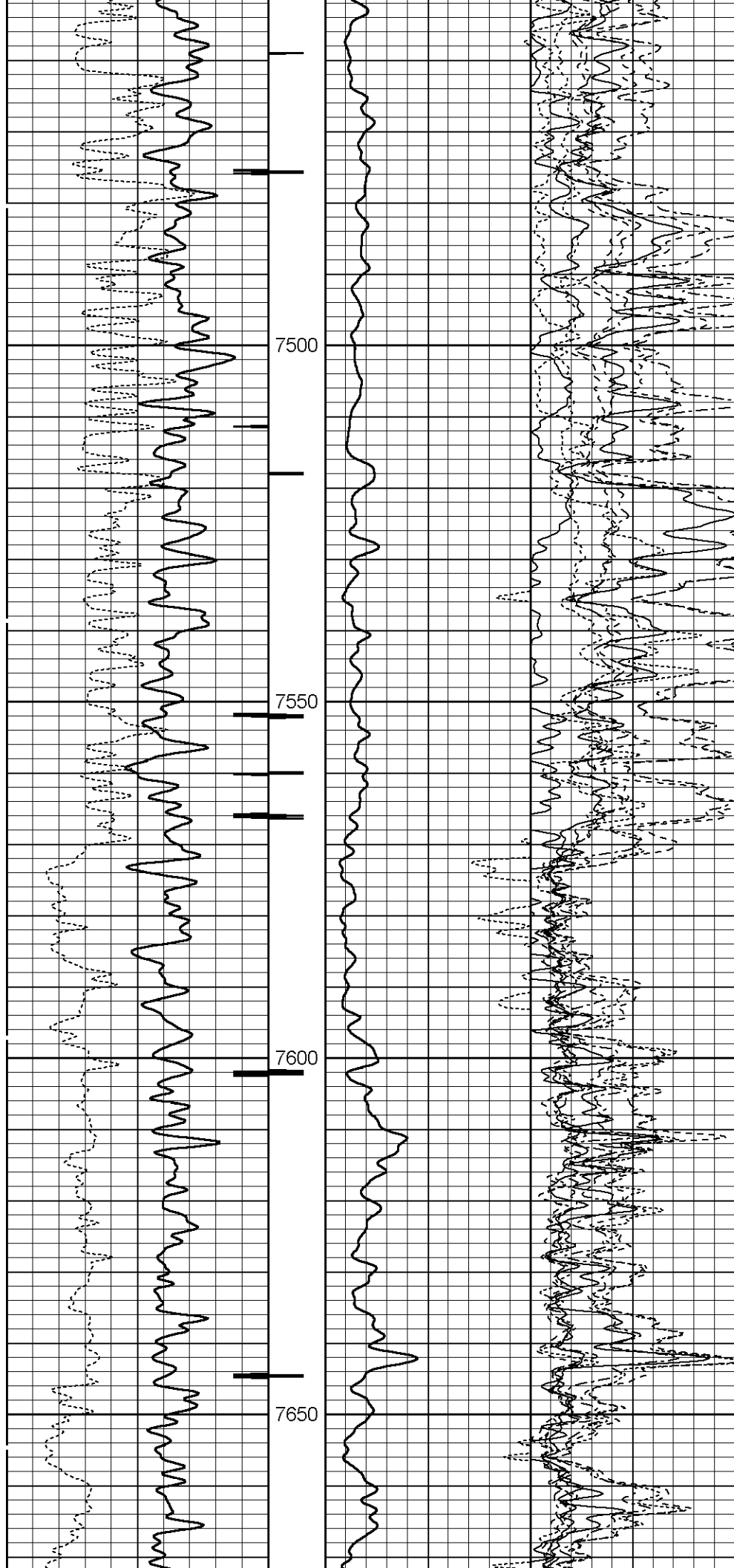




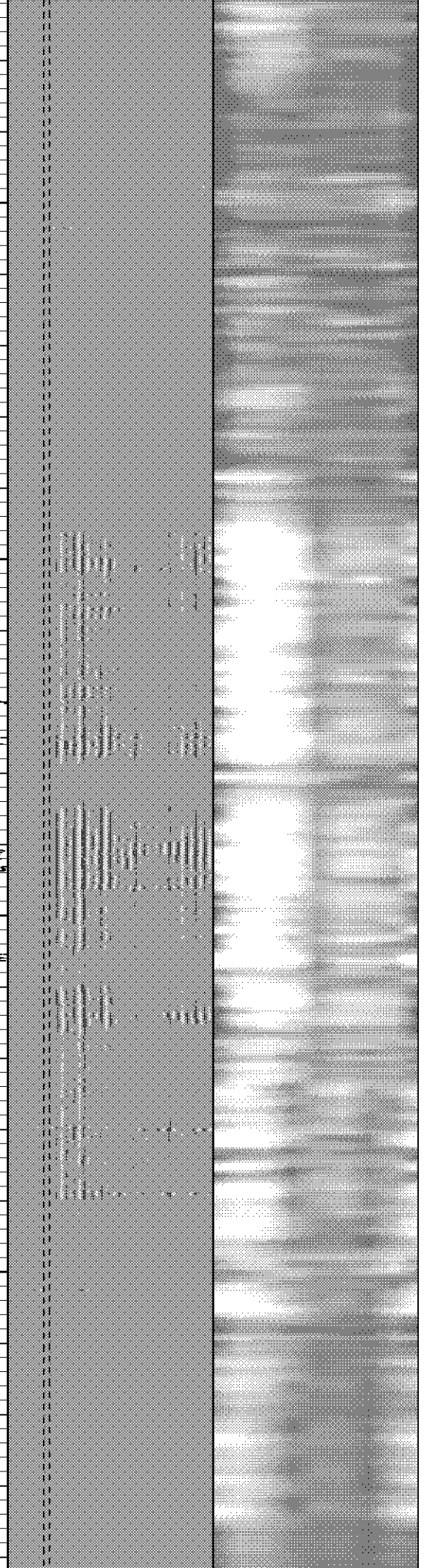
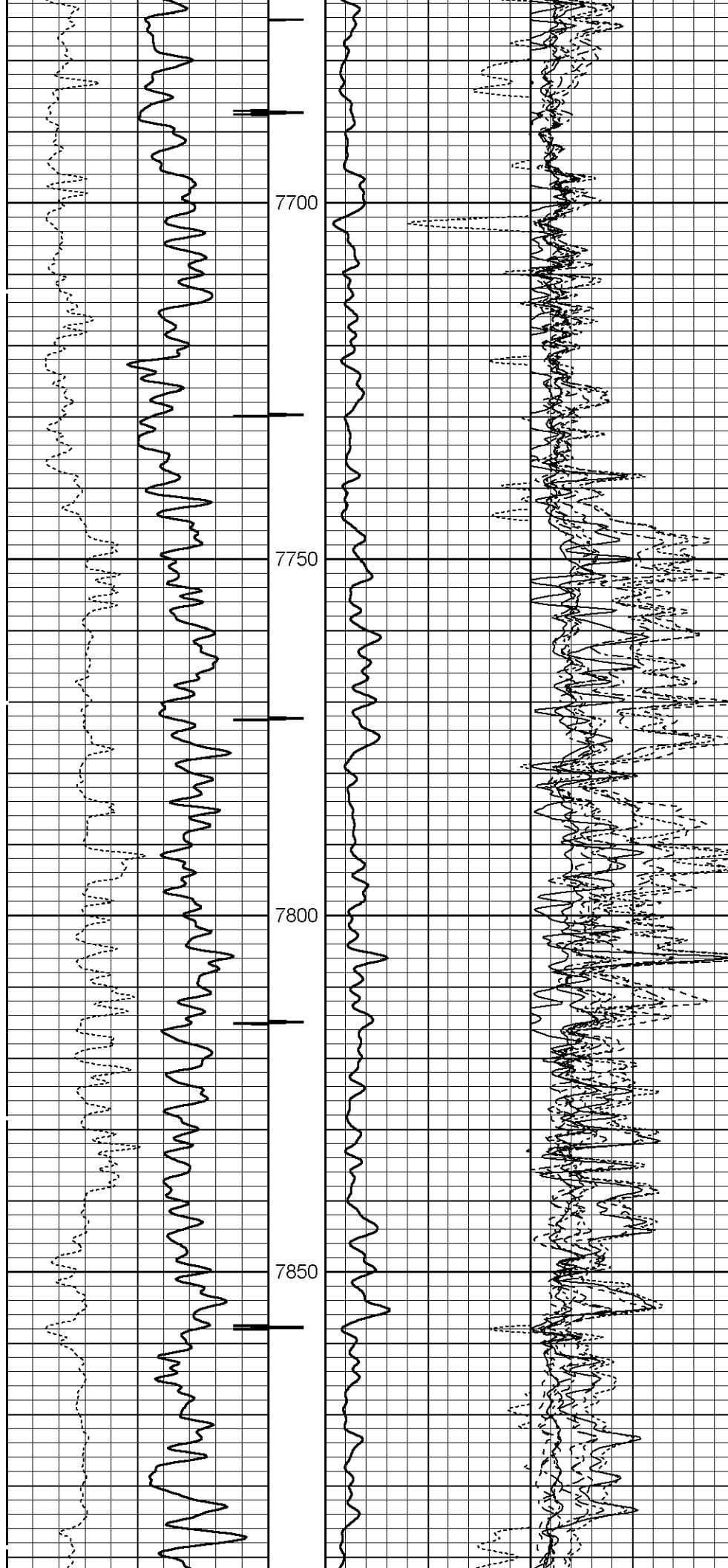


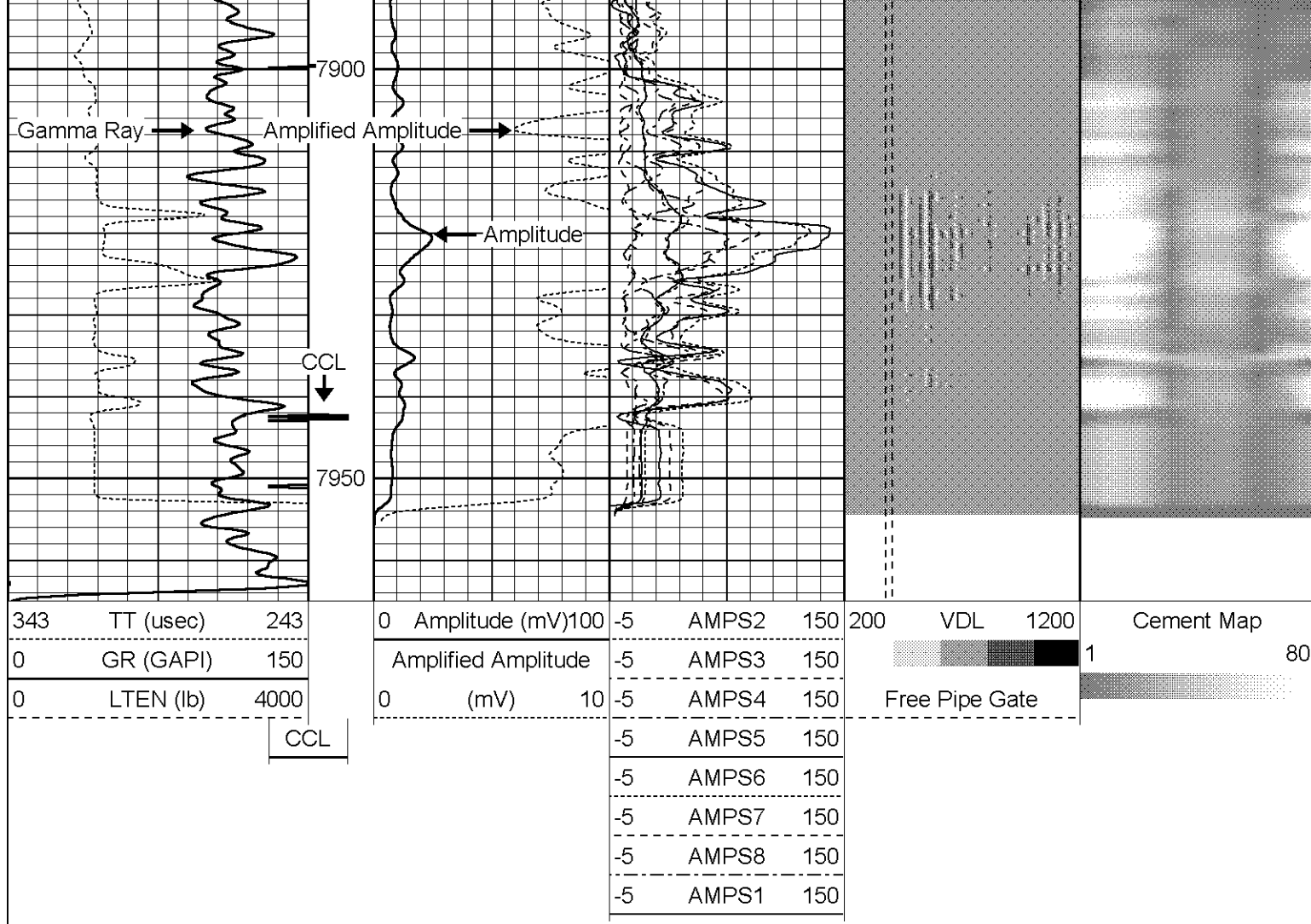












**Cutters**  
Wireline Service Inc.  
A Cased Hole Wireline Company

HDU 9-11BH

Sensor	Offset (ft)	Schematic	Description	Len (ft)	OD (in)	Wt (lb)
			1.4375CHD Titan Cable Head 1 7/16	1.00	1.44	10.00
			Probe	2.86	2.75	40.00
WVF3FT	11.63					
WVFCAL	11.63					

