

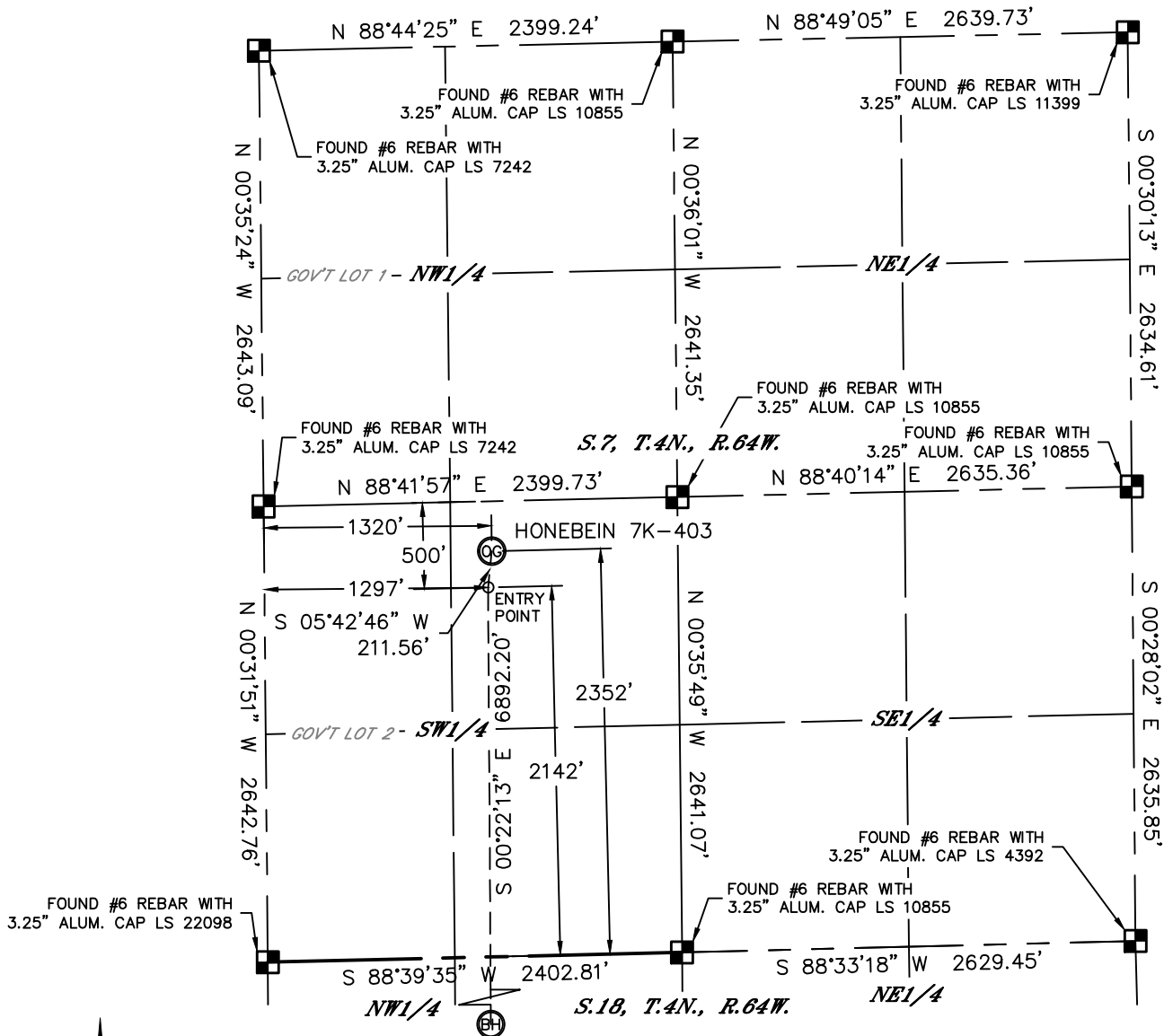


Lat40°, Inc. 1635 Foxtrail Drive, Suite 325 Loveland, CO 970-776-3321

# WELL LOCATION CERTIFICATE

THIS MAP DOES NOT REPRESENT A BOUNDARY SURVEY

SECTION: 7  
TOWNSHIP: 4N  
RANGE: 64W



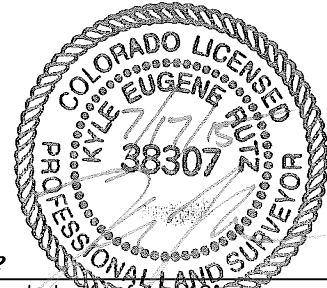
In accordance with a request from Mac Neumann with PDC ENERGY Lat40°, Inc. has determined the surface location of the HONEBEIN 7K-403 to be 2352' from the SOUTH line and 1320' from the WEST line as measured at right angles from the section lines of Section 7, Township 4 North, Range 64 West and the bottom hole to be 500' from the SOUTH line and 1297' from the WEST line as measured at right angles from the section lines of Section 18, Township 4 North, Range 64 West of the Sixth Principal Meridian, County of Weld, State of Colorado.

I hereby state that this Well Location Certificate was prepared by me, or under my direct supervision, that the fieldwork was completed on 7/3/2014, for and on behalf of PDC ENERGY. That this is not a Land Survey Plat or an Improvement Survey Plat, and that it is not to be relied upon for establishment of fence, building, or other future improvement lines.

**SURFACE LOCATION**  
LAT: 40.32593°N  
LONG: 104.59731°W  
PDOP: 1.3  
ELEV: 4849'  
1/4, 1/4: NESW

**BOTTOM HOLE**  
LAT: 40.30644°N  
LONG: 104.59748°W

**ENTRY POINT**  
LAT: 40.32535°N  
LONG: 104.59739°W



**SHEET 1 OF 2**

Kyle E. Rutz—On behalf of Lat40°, Inc.  
Colorado Licensed Professional  
Land Surveyor No. 38307

DATE: 7/17/2015  
PROJECT#: 2014120

## LEGEND

- = ALIQUOT MONUMENT AS DESCRIBED
- = CALCULATED POSITION

## NOTE:

- 1) Bearings shown are Grid Bearings of the Colorado State Plane Coordinate System, North Zone, North American Datum 1983. The lineal dimensions as contained herein are based upon the "U.S. Survey Foot."
- 2) Ground elevations are based on an observed GPS elevation (NAVD 1988 DATUM).
- 3) IMPROVEMENTS: See LOCATION DRAWING for all visible improvements within 500' of disturbed area.
- 4) SURFACE USE: PASTURE
- 5) INSTRUMENT OPERATOR: BRIAN ROTTINGHAUS
- 6) NEAREST CULTURAL ITEMS:  
BUILDING: ±770' NE  
BUILDING UNIT: ±789' SE  
HIGH OCCUPANCY BUILDING UNIT: 5280'+  
DESIGNATED OUTSIDE ACTIVITY AREA: 5280'+  
PUBLIC ROAD: (CR 49) 1300' W  
ABOVEGROUND UTILITY: ±907' N  
RAILROAD: 5280'+  
PROPERTY LINE: 290' N



Lat40°, Inc. 1635 Foxtrail Drive, Suite 325 Loveland, CO 970-776-3321

# WELL LOCATION CERTIFICATE

THIS MAP DOES NOT REPRESENT A BOUNDARY SURVEY

SECTION: 7  
TOWNSHIP: 4N  
RANGE: 64W

S 05°42'46" W 211.56' HONEBEIN 7K-403



ENTRY POINT

S. 7, T. 4N., R. 64W.

SW1/4

SE1/4

FOUND #6 REBAR WITH  
3.25" ALUM. CAP LS 22098

N 88°39'35" E 2402.81'

FOUND #6 REBAR WITH  
3.25" ALUM. CAP LS 10855

N 88°33'18" E 2629.45'

FOUND #6 REBAR WITH  
3.25" ALUM. CAP LS 4392

S 01°36'11" E 2612.82'

N 00°23'12" W 2641.83'

N 00°17'28" W 2641.39'

GOV'T LOT 1 - NW1/4

NE1/4

S 00°22'13" E 6892.20'

FOUND #6 REBAR WITH  
2.5" ALUM. CAP LS 28656

N 88°40'19" E 2407.20'

N 87°56'44" E 2685.61'

FOUND 3.25" ALUM.  
CAP LS 22098

S. 18, T. 4N., R. 64W.

FOUND #6 REBAR WITH  
2" ALUM. CAP LS 18263

S 01°36'11" E 2612.82'

N 00°20'43" W 2634.04'

N 00°18'14" W 2578.43'

GOV'T LOT 2 - SW1/4

SE1/4

1297'

FOUND #6 REBAR WITH  
3.25" ALUM. CAP LS 22098

S 89°59'44" W 2408.76'

S 88°33'31" W 2625.91'

FOUND 2.5" ALUM.  
CAP LS 28285

FOUND #6 REBAR WITH  
3.25" ALUM. CAP LS 4392



0 1000  
1"=1000'

## LEGEND



= ALIQUOT MONUMENT AS DESCRIBED



= CALCULATED POSITION

## SHEET 2 OF 2

Kyle E. Rutz—On behalf of Lat40°, Inc.  
Colorado Licensed Professional  
Land Surveyor No. 38307

DATE: 7/17/2015  
PROJECT#: 2014120

