

1801 Broadway  
Suite 500  
Denver, Colorado 80202



Allison Linz  
Regulatory Technician  
Tel: 303.398.0355  
E-mail: alinz@gwogco.com

April 7, 2015

Colorado Oil and Gas Conservation Commission  
1120 Lincoln Street, Suite 801  
Denver, Colorado 80203

RE: **Proposed Wellbore Spacing Unit**  
Kortum LD 21-369HC

Codell New Drill  
Township 1 South, Range 67 West, 6<sup>th</sup> P.M.  
NWNE Section 21  
Adams County, Colorado

Dear Director:

Great Western Operating Company, LLC is planning to drill the above captioned well in accordance with the provisions of COGCC Rule 318A.e.

Great Western proposed wellbore spacing unit consists of:

- **W2E2 , E2W2 Section 21**
- **320 Acres**

The 30 day notification time period has passed and we have not received any objections to such well locations or proposed spacing unit, therefore Great Western hereby requests the Director to approve the above mentioned well. Great Western Operating Company, LLC respectfully requests that the COGCC review the enclosed map illustrating the proposed wellbore spacing unit.

Respectfully,

*Allison Linz*

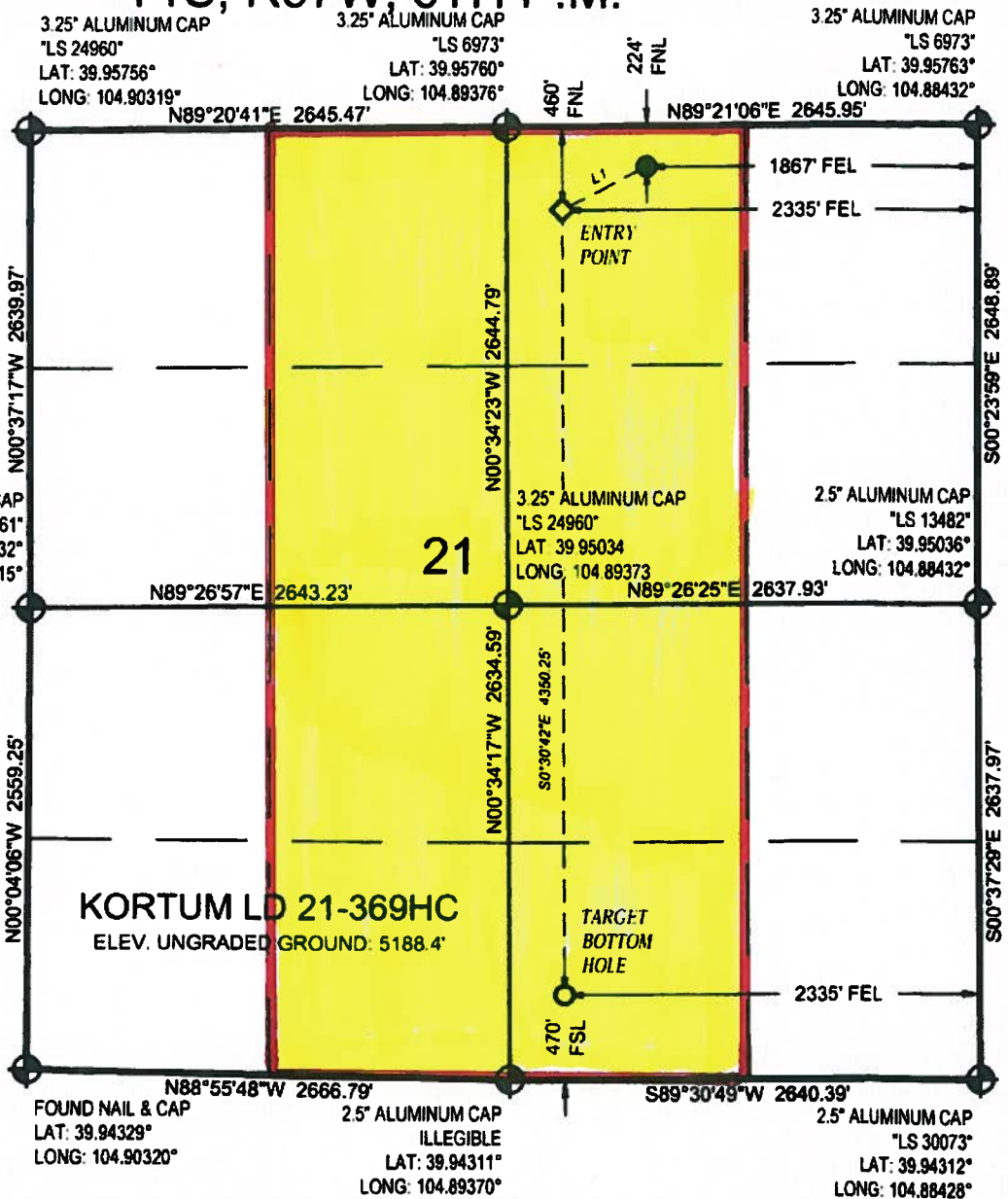
Allison Linz  
Regulatory Technician  
Great Western Operating Company, LLC

**LEGEND**

- PROPOSED WELLHEAD
- ◇ ENTRY POINT
- TARGET BOTTOM HOLE
- ⊕ SECTION CORNER

NOTE: UNITS SHOWN ARE IN U.S. SURVEY FEET AS MEASURED ON GROUND. LATITUDE AND LONGITUDE IS SHOWN BASED UPON COLORADO NORTH ZONE STATE PLANE (NAD83).

**T1S, R67W, 6TH P.M.**



**KORTUM LD 21-369HC**  
ELEV. UNGRADED GROUND: 5188.4'

**21**

**LINE TABLE**

LINE	DIRECTION	LENGTH
L1	S62°41'54"W	525.23'

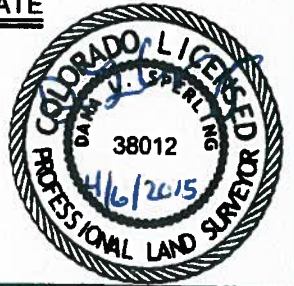
PDOP = 1.4	
NAD 83 (TARGET BOTTOM HOLE)	
LATITUDE = 39°56'39.84" (39.944400°)	LONGITUDE = 104°53'33.43" (104.892618°)
NAD 27 (TARGET BOTTOM HOLE)	
LATITUDE = 39°56'39.89" (39.944415°)	LONGITUDE = 104°53'31.51" (104.892087°)
NAD 83 (ENTRY POINT)	NAD 83 (SURFACE LOCATION)
LATITUDE = 39°57'22.82" (39.956338°)	LATITUDE = 39°57'25.17" (39.956991°)
LONGITUDE = 104°53'33.54" (104.892650°)	LONGITUDE = 104°53'27.52" (104.890978°)
NAD 27 (ENTRY POINT)	NAD 27 (SURFACE LOCATION)
LATITUDE = 39°57'22.87" (39.956353°)	LATITUDE = 39°57'25.22" (39.957006°)
LONGITUDE = 104°53'31.63" (104.892119°)	LONGITUDE = 104°53'25.61" (104.890446°)



**CERTIFICATE**

THIS IS TO CERTIFY THAT THE ABOVE PLAT WAS PREPARED FROM FIELD NOTES OF ACTUAL SURVEYS MADE BY ME OR UNDER MY DIRECT CHARGE AND THAT THE SAME ARE TRUE AND CORRECT TO THE BEST OF MY PROFESSIONAL KNOWLEDGE AND BELIEF.

DANA L. SPERLING  
PROFESSIONAL LAND SURVEYOR  
COLORADO LICENSE NUMBER 38012



**BASIS OF BEARINGS**  
BASIS OF BEARINGS IS A G.P.S. OBSERVATION

**BASIS OF ELEVATION**

PUBLISHED VALUES OF NGS CONTROL STATION "J 411" WITH AN ELEVATION OF 5098 FEET (NAVD 88)

**GREAT WESTERN OIL & GAS COMPANY**

**KORTUM LD 21-369HC**  
NW1/4, NE1/4, SECTION 21, T1S, R67W, 6TH P.M.  
ADAMS COUNTY, COLORADO

SURVEYED BY: Dana L. Sperling and J.S.	DATE: 11.19.14
DRAWN BY: LHG	DATE DRAWN: 11.26.14
SCALE: 1" = 1000'	REVISED: 04.06.15

**WELL LOCATION PLAT**

4690 Table Mountain Drive, Suite 200  
Golden, CO 80403  
TEL: 303.237.2072  
FAX: 303.237.2050  
www.olssonassociates.com