

WELL LOCATION DATA:
 LATITUDE: 40.41803"N
 LONGITUDE: 104.67166"W
 ELEVATION: 4635'
 PDOP: 1.3
 OPERATOR: CRW
 SURFACE USE: INDUSTRIAL
 PROPOSED GROUND ELEVATION: 4635'

NEAREST CULTURAL ITEMS:
 BUILDING: 542'
 BUILDING UNIT: 513'
 HIGH OCCUPANCY BUILDING UNIT: 3462'+
 DESIGNATED OUTSIDE ACTIVITY AREA: 5280'+
 PUBLIC ROAD: 422'
 ABOVE GROUND UTILITY: 405'
 RAILROAD: 4055'
 PROPERTY LINE: 232'

- NOTES:**
- DISTANCES ARE MEASURED PERPENDICULAR TO NEAREST SECTION LINE AND ARE SHOWN ON THE SAME SIDE OF THE SECTION LINE WHERE THE WELL IS LOCATED.
 - THIS MAP DOES NOT REPRESENT A MONUMENTED BOUNDARY SURVEY. SIXTEENTH CORNER LOCATIONS ARE COMPUTED, UNLESS OTHERWISE NOTED.
 - BOTTOM HOLE LOCATIONS AND HORIZONTAL COMPLETION ZONE PROVIDED BY OTHERS.

BASIS OF BEARING:
 THE NORTH LINE OF THE NORTHEAST QUARTER OF SECTION 9-T5N-R65W BEARS N87°38'26"E BETWEEN THE NORTH QUARTER CORNER OF SECTION 9 MONUMENTED WITH A 3 1/4" A.C. STAMPED "PLS 33642" AND THE NORTHEAST CORNER OF SECTION 9 MONUMENTED WITH A 3 1/4" A.C. STAMPED "LS 4392" BASED ON THE COLORADO NORTH 0501 STATE PLANE COORDINATE SYSTEM.

ELEVATIONS ARE BASED ON NAVD 88, AS OBSERVED FROM GPS OBSERVATIONS

LEGEND

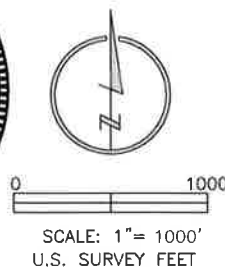
- (Circle with cross) ALIQUOT CORNER
 (Circle with dot) BOTTOM HOLE
 (Square with cross) COMPUTED ALIQUOT CORNER FROM GLO RECORDS
 (Triangle) COMPUTED ALIQUOT CORNER FROM MONUMENT ACCESSORIES
 A.C. ALUMINUM CAP
 R.B. RANGE BOX

LAND SURVEYOR'S CERTIFICATION

LAMP, RYNEARSON & ASSOCIATES, INC., OF FT. COLLINS, COLORADO HAS, IN ACCORDANCE WITH A REQUEST FROM DUSTIN DYK FOR EXTRACTION OIL AND GAS, DETERMINED THE SURFACE LOCATION OF THE WELL DESIGNATED AS MT-HEATH 2-8-7 TO BE 1020' FROM THE NORTH LINE AND 1753' FROM THE WEST LINE OF SECTION 9 TOWNSHIP 5 NORTH, RANGE 65 WEST OF THE 6TH P.M., WELD COUNTY, COLORADO.

FRANK A. KOHL
 COLORADO PLS 37067
 DATE OF SURVEY: 3/15/2012 (SECTION CONTROL)
 DATE OF SURVEY: 7/09/2014 (WELL LOCATION)

COLORADO LICENSED
FRANK A. KOHL
37067
3/27/2015
PROFESSIONAL LAND SURVEYOR

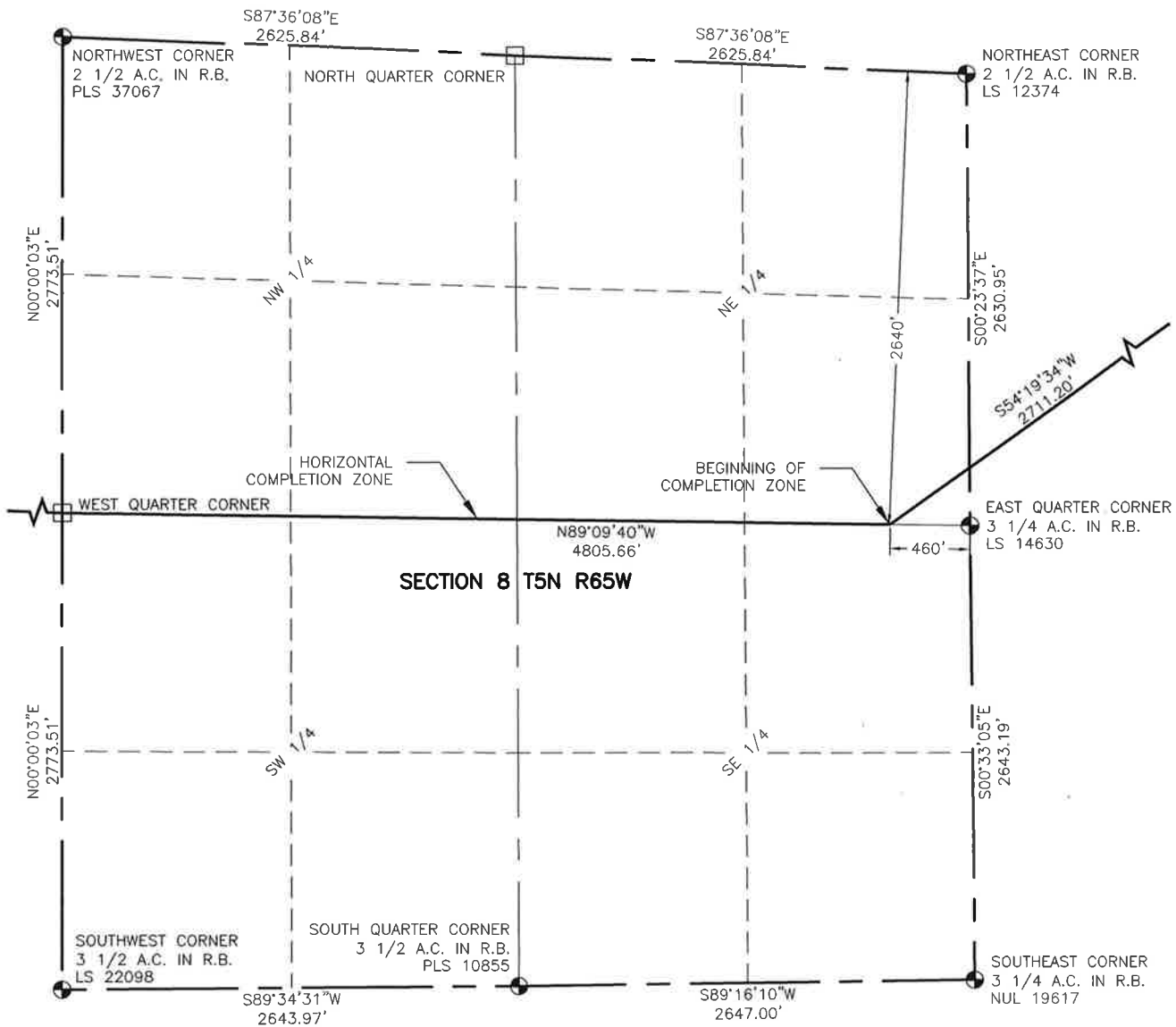


LAMP RYNEARSON & ASSOCIATES

4715 Innovation Drive 970.226.0342 | P
 Fort Collins, CO 80525 970.226.0879 | F
 www.LRA-inc.com

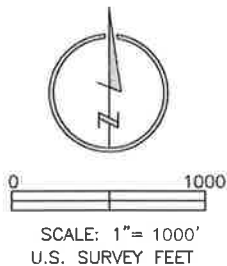
Proposed Well Location Exhibit
 MT-HEATH 2-8-7
 1 OF 3

drawn by	date	cogcc id	project - task number	book and page	surface - location
JPM	3/26/15		0210035.00-502	MR01/MR02	NE/4,NW/4, SEC 9 T5N R65W
path\filename P:_Engineering\0210035 MRI Midtown\DRAWINGS\EXHIBITS\0210035EXWP-0000.dwg					



NOTES:

1. DISTANCES ARE MEASURED PERPENDICULAR TO NEAREST SECTION LINE AND ARE SHOWN ON THE SAME SIDE OF THE SECTION LINE WHERE THE WELL IS LOCATED.
2. THIS MAP DOES NOT REPRESENT A MONUMENTED BOUNDARY SURVEY. SIXTEENTH CORNER LOCATIONS ARE COMPUTED, UNLESS OTHERWISE NOTED.
3. BOTTOM HOLE LOCATIONS AND HORIZONTAL COMPLETION ZONE PROVIDED BY OTHERS.



LEGEND

- COMPUTED ALIQUOT CORNER FROM GLO RECORDS
- ALIQUOT CORNER
- ⊙ A.C. ALUMINUM CAP
- ⊙ B.H. BOTTOM HOLE
- ⊙ R.B. RANGE BOX
- ⊙ PROPOSED WELL
- COMPUTED ALIQUOT CORNER LOCATION

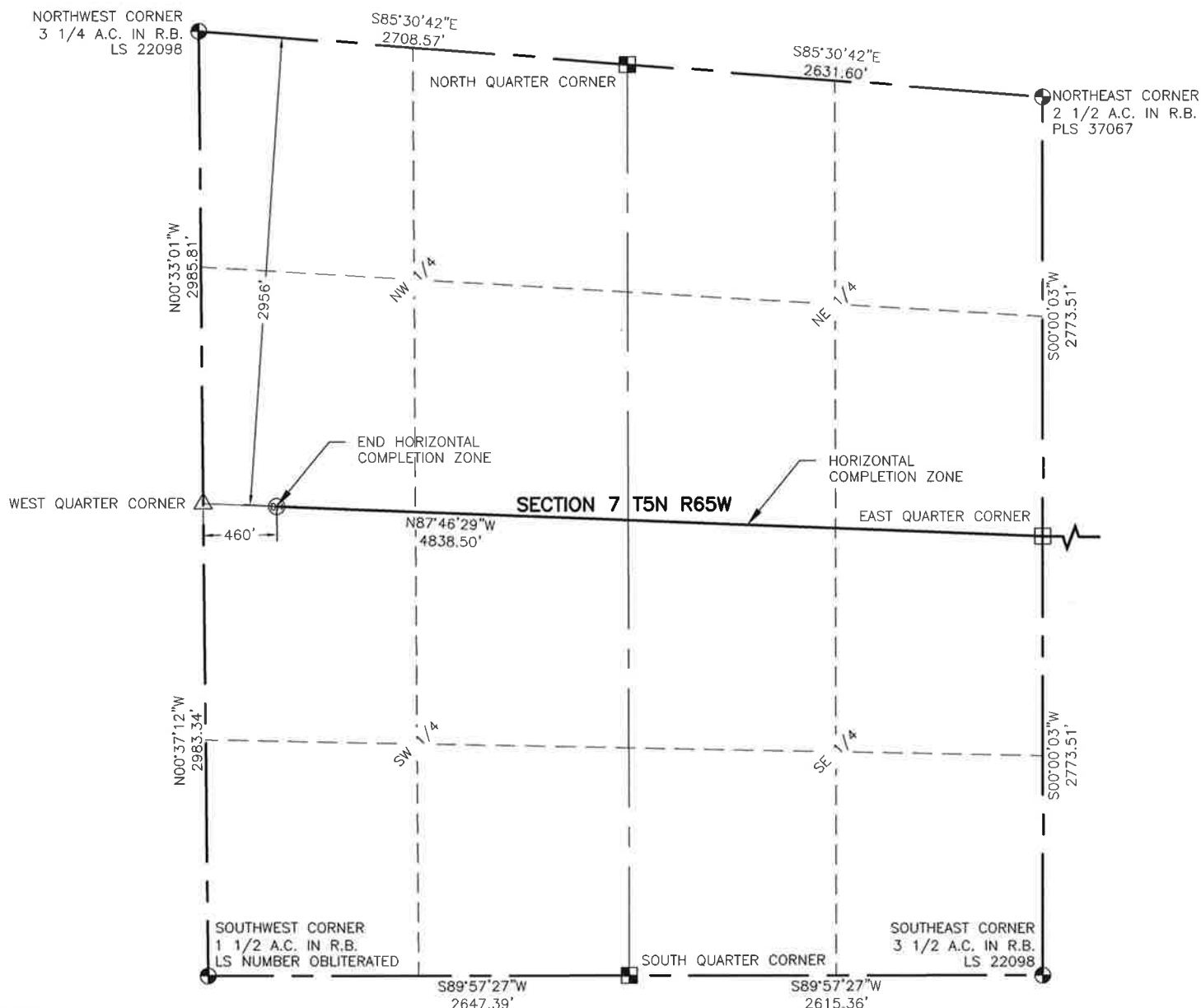


**LAMP RYNEARSON
& ASSOCIATES**

4715 Innovation Drive 970.226.0342 | P
Fort Collins, CO 80525 970.226.0879 | F
www.LRA-Inc.com

Proposed Well Location Exhibit
MT-HEATH 2-8-7
2 OF 3

drawn by	date	cogcc id	project - task number	book and page	surface - location
JPM	3/26/15		0210035.00-502	MR01/MR02	NE/4,NW/4, SEC 9 T5N R65W
path\filename P:_Engineering\0210035 MRI Midtown\DRAWINGS\EXHIBITS\0210035EXWP-0001.dwg					



NOTES:

1. DISTANCES ARE MEASURED PERPENDICULAR TO NEAREST SECTION LINE AND ARE SHOWN ON THE SAME SIDE OF THE SECTION LINE WHERE THE WELL IS LOCATED.
2. THIS MAP DOES NOT REPRESENT A MONUMENTED BOUNDARY SURVEY. SIXTEENTH CORNER LOCATIONS ARE COMPUTED, UNLESS OTHERWISE NOTED.
3. BOTTOM HOLE LOCATIONS AND HORIZONTAL COMPLETION ZONE PROVIDED BY OTHERS.



SCALE: 1" = 1000'
U.S. SURVEY FEET

LEGEND

- | | |
|---|------------------------------------|
| ⊕ ALIQUOT CORNER | □ COMPUTED ALIQUOT CORNER LOCATION |
| ⊙ BOTTOM HOLE | A.C. ALUMINUM CAP |
| ⊞ COMPUTED ALIQUOT CORNER FROM GLO RECORDS | R.B. RANGE BOX |
| △ COMPUTED ALIQUOT CORNER FROM MONUMENT ACCESSORIES | |



**LAMP RYNEARSON
& ASSOCIATES**

4715 Innovation Drive 970.226.0342 | P
Fort Collins, CO 80525 970.226.0879 | F
www.LRA-Inc.com

Proposed Well Location Exhibit
MT-HEATH 2-8-7
3 OF 3

drawn by
JPM

date
3/26/15

cogcc id

project - task number
0210035.00-502

book and page
MR01/MR02

surface - location
NE/4,NW/4, SEC 9 T5N R65W

path\filename P:_Engineering\0210035 MRI Midtown\DRAWINGS\EXHIBITS\0210035EXWP-0002.dwg