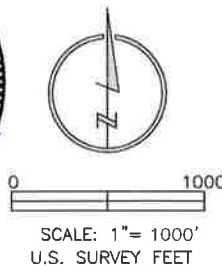


LAND SURVEYOR'S CERTIFICATION

LAMP, RYNEARSON & ASSOCIATES, INC., OF FT. COLLINS, COLORADO HAS, IN ACCORDANCE WITH A REQUEST FROM DUSTIN DYK FOR EXTRACTION OIL AND GAS, DETERMINED THE SURFACE LOCATION OF THE WELL DESIGNATED AS MT-HEATH 1-8-7 TO BE 1004' FROM THE NORTH LINE AND 1753' FROM THE WEST LINE OF SECTION 9 TOWNSHIP 5 NORTH, RANGE 65 WEST OF THE 6TH P.M., WELD COUNTY, COLORADO.

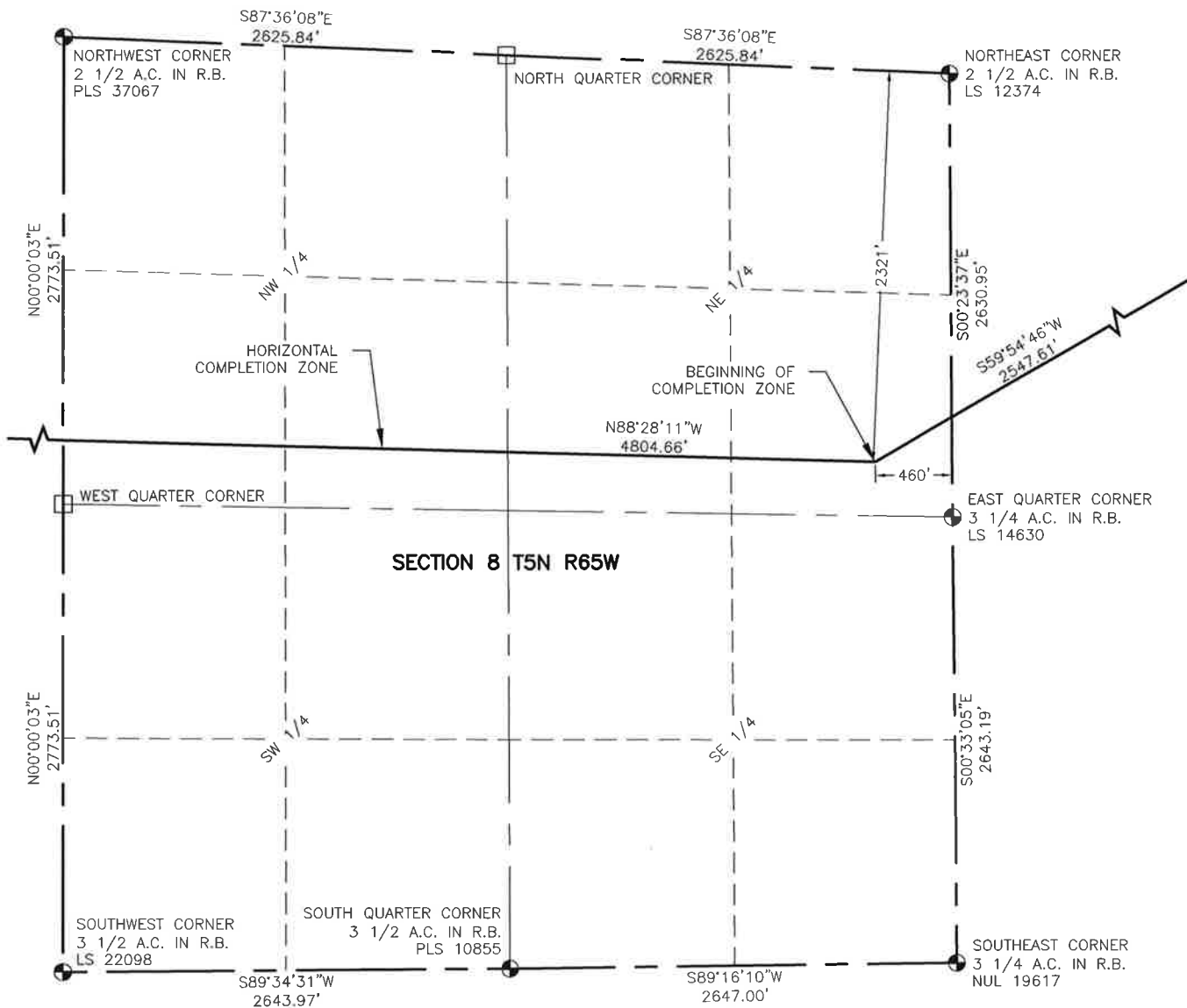


**LAMP RYNEARSON
& ASSOCIATES**

4715 Innovation Drive 970.226.0342 | P
Fort Collins, CO 80525 970.226.0879 | F
www.LRA-Inc.com

Proposed Well Location Exhibit
MT-HEATH 1-8-7
1 OF 3

| drawn by | date | cogcc id | project - task number | book and page | surface - location |
|--|---------|----------|-----------------------|---------------|---------------------------|
| JPM | 3/26/15 | | 0210035.00-502 | MR01/MR02 | NE/4,NW/4, SEC 9 T5N R65W |
| path\filename P:_Engineering\0210035 MRI Midtown\DRAWINGS\EXHIBITS\0210035EXWP-00N0.dwg | | | | | |



NOTES:

1. DISTANCES ARE MEASURED PERPENDICULAR TO NEAREST SECTION LINE AND ARE SHOWN ON THE SAME SIDE OF THE SECTION LINE WHERE THE WELL IS LOCATED.
2. THIS MAP DOES NOT REPRESENT A MONUMENTED BOUNDARY SURVEY. SIXTEENTH CORNER LOCATIONS ARE COMPUTED, UNLESS OTHERWISE NOTED.
3. BOTTOM HOLE LOCATIONS AND HORIZONTAL COMPLETION ZONE PROVIDED BY OTHERS.



0 1000
SCALE: 1"= 1000'
U.S. SURVEY FEET

LEGEND

- COMPUTED ALIQUOT CORNER FROM GLO RECORDS
- A.C. ALUMINUM CAP
- R.B. RANGE BOX
- ALIQUOT CORNER
- BOTTOM HOLE
- PROPOSED WELL
- COMPUTED ALIQUOT CORNER LOCATION



**LAMP RYNEARSON
& ASSOCIATES**

4715 Innovation Drive 970.226.0342 | P
Fort Collins, CO 80525 970.226.0879 | F
www.LRA-Inc.com

Proposed Well Location Exhibit
MT-HEATH 1-8-7
2 OF 3

drawn by
JPM

date
3/26/15

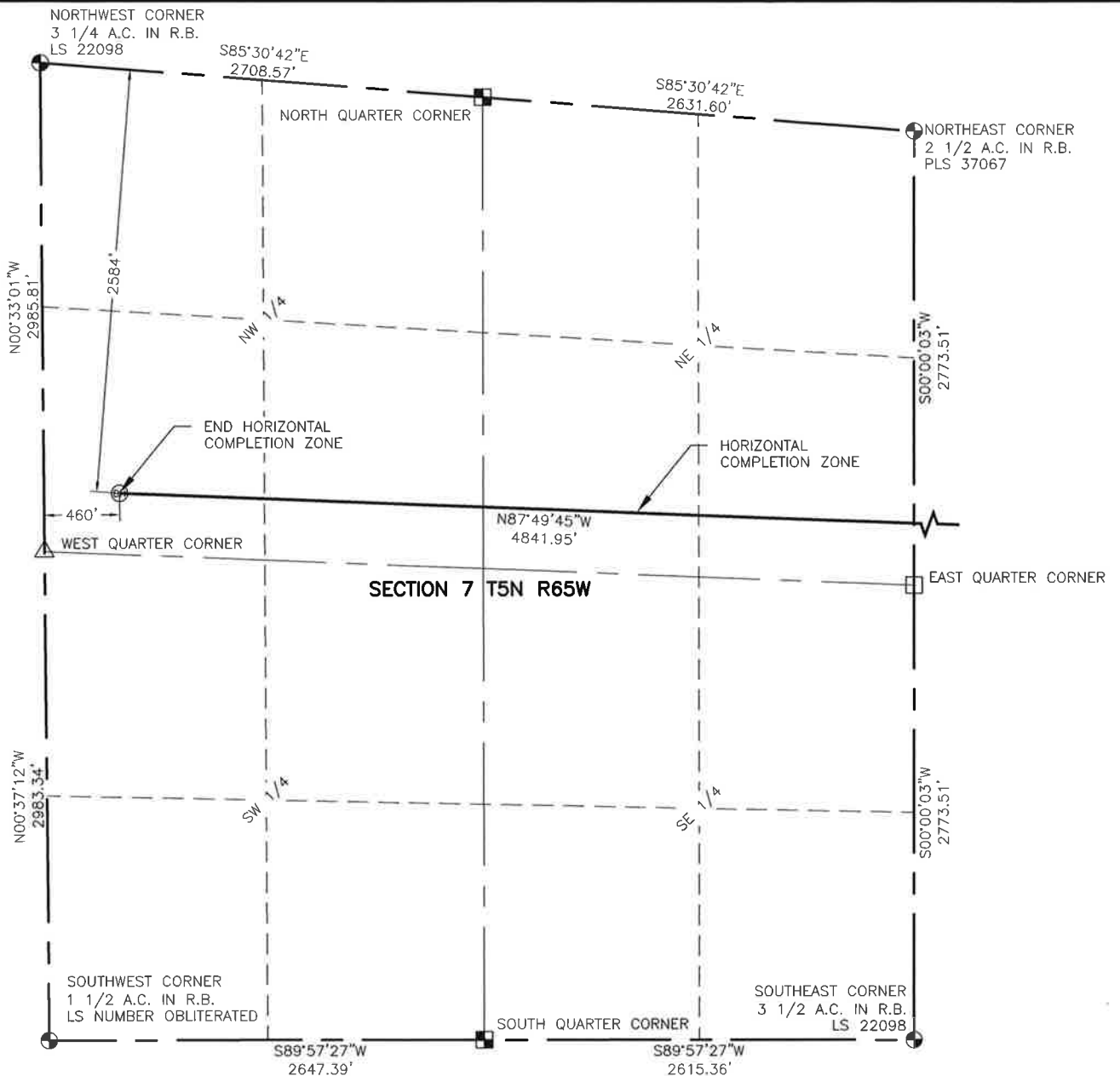
cogcc id

project - task number
0210035.00-502

book and page
MR01/MR02

surface - location
NE/4,NW/4, SEC 9 T5N R65W

path\filename P:_Engineering\0210035 MRI Midtown\DRAWINGS\EXHIBITS\0210035EXWP-00N1.dwg



NOTES:

- DISTANCES ARE MEASURED PERPENDICULAR TO NEAREST SECTION LINE AND ARE SHOWN ON THE SAME SIDE OF THE SECTION LINE WHERE THE WELL IS LOCATED.
- THIS MAP DOES NOT REPRESENT A MONUMENTED BOUNDARY SURVEY. SIXTEENTH CORNER LOCATIONS ARE COMPUTED, UNLESS OTHERWISE NOTED.
- BOTTOM HOLE LOCATIONS AND HORIZONTAL COMPLETION ZONE PROVIDED BY OTHERS.



SCALE: 1" = 1000'
U.S. SURVEY FEET

LEGEND

- ALIQUOT CORNER
- BOTTOM HOLE
- COMPUTED ALIQUOT CORNER FROM GLO RECORDS
- COMPUTED ALIQUOT CORNER FROM MONUMENT ACCESSORIES
- COMPUTED ALIQUOT CORNER LOCATION
- A.C. ALUMINUM CAP
- R.B. RANGE BOX



**LAMP RYNEARSON
& ASSOCIATES**

4715 Innovation Drive 970.226.0342 | P
Fort Collins, CO 80525 970.226.0879 | F
www.LRA-inc.com

Proposed Well Location Exhibit
MT-HEATH 1-8-7
3 OF 3

| drawn by | date | cogcc id | project - task number | book and page | surface - location |
|--|---------|----------|-----------------------|---------------|---------------------------|
| JPM | 3/26/15 | | 0210035.00-502 | MR01/MR02 | NE/4,NW/4, SEC 9 T5N R65W |
| path\filename P:_Engineering\0210035 MRI Midtown\DRAWINGS\EXHIBITS\0210035EXWP-00N2.dwg | | | | | |