

#### WELL LOCATION DATA:

LATITUDE: 40.41759°N  
 LONGITUDE: 104.67166°W  
 ELEVATION: 4636'  
 PDOP: 1.3  
 OPERATOR: CRW  
 SURFACE USE: INDUSTRIAL  
 PROPOSED GROUND ELEVATION: 4635'

#### NEAREST CULTURAL ITEMS:

BUILDING: 561'  
 BUILDING UNIT: 525'  
 HIGH OCCUPANCY BUILDING UNIT: 3459'+  
 DESIGNATED OUTSIDE ACTIVITY AREA: 5280'+  
 PUBLIC ROAD: 425'  
 ABOVE GROUND UTILITY: 408'  
 RAILROAD: 4030'  
 PROPERTY LINE: 232'

#### NOTES:

1. DISTANCES ARE MEASURED PERPENDICULAR TO NEAREST SECTION LINE AND ARE SHOWN ON THE SAME SIDE OF THE SECTION LINE WHERE THE WELL IS LOCATED.
2. THIS MAP DOES NOT REPRESENT A MONUMENTED BOUNDARY SURVEY. SIXTEENTH CORNER LOCATIONS ARE COMPUTED, UNLESS OTHERWISE NOTED.
3. BOTTOM HOLE LOCATIONS AND HORIZONTAL COMPLETION ZONE PROVIDED BY OTHERS.

#### BASIS OF BEARING:

THE NORTH LINE OF THE NORTHEAST QUARTER OF SECTION 9-T5N-R65W BEARS N87°38'26"E BETWEEN THE NORTH QUARTER CORNER OF SECTION 9 MONUMENTED WITH A 3 1/4" A.C. STAMPED "PLS 33642" AND THE NORTHEAST CORNER OF SECTION 9 MONUMENTED WITH A 3 1/4" A.C. STAMPED "LS 4392" BASED ON THE COLORADO NORTH 0501 STATE PLANE COORDINATE SYSTEM.

ELEVATIONS ARE BASED ON NAVD 88, AS OBSERVED FROM GPS OBSERVATIONS

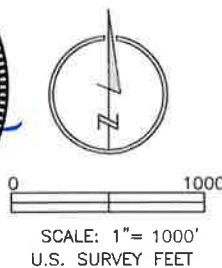
#### LEGEND

- |   |  |      |   |
|---|--|------|---|
| ● | ALIQUOT CORNER                           | △    | COMPUTED ALIQUOT CORNER FROM MONUMENT ACCESSORIES |
| ⊙ | BOTTOM HOLE                              | A.C. | ALUMINUM CAP                                      |
| ■ | COMPUTED ALIQUOT CORNER FROM GLO RECORDS | R.B. | RANGE BOX   |

#### LAND SURVEYOR'S CERTIFICATION

LAMP, RYNEARSON & ASSOCIATES, INC., OF FT. COLLINS, COLORADO HAS, IN ACCORDANCE WITH A REQUEST FROM DUSTIN DYK FOR EXTRACTION OIL AND GAS, DETERMINED THE SURFACE LOCATION OF THE WELL DESIGNATED AS MT-GLENFAIR C8-8-7 TO BE 1180' FROM THE NORTH LINE AND 1755' FROM THE WEST LINE OF SECTION 9 TOWNSHIP 5 NORTH, RANGE 65 WEST OF THE 6TH P.M., WELD COUNTY, COLORADO.

FRANK A. KOHL  
 COLORADO PLS 37067  
 DATE OF SURVEY: 3/15/2012 (SECTION CONTROL)  
 DATE OF SURVEY: 7/09/2014 (WELL LOCATION)

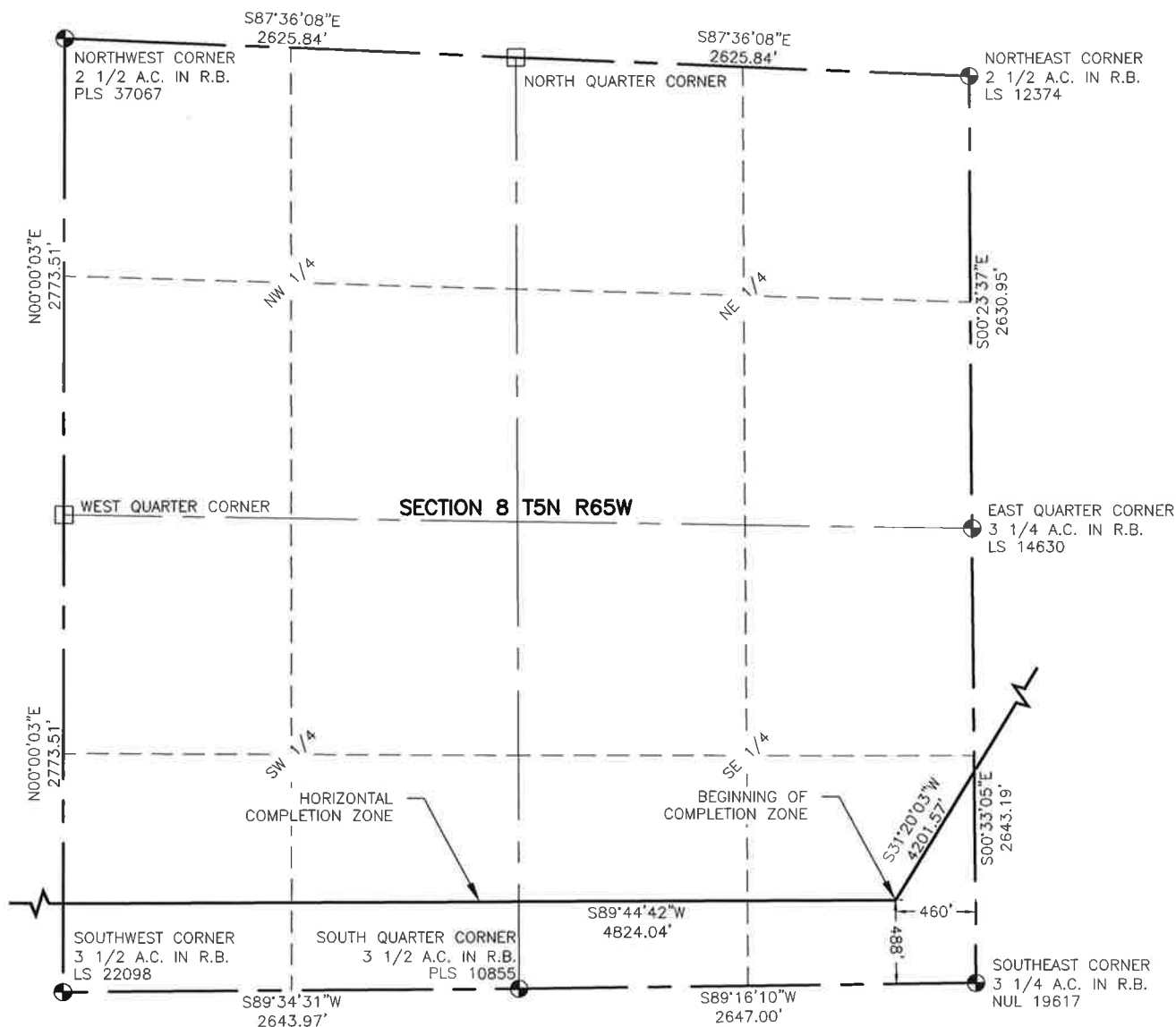


**LAMP RYNEARSON  
& ASSOCIATES**

4715 Innovation Drive 970.226.0342 | P  
 Fort Collins, CO 80525 970.226.0879 | F  
 www.LRA-Inc.com

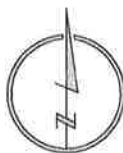
Proposed Well Location Exhibit  
 MT-GLENFAIR C8-8-7  
 1 OF 3

|   |                 |          |   |                            |   |
|---|-----------------|----------|---|----------------------------|---|
| drawn by<br>JPM   | date<br>3/26/15 | cogcc id | project - task number<br>0210035.00-502 | book and page<br>MR01/MR02 | surface - location<br>NE/4,NW/4, SEC 9 T5N R65W |
| path\filename P:\_Engineering\0210035 MRI Midtown\DRAWINGS\EXHIBITS\0210035EXWP-00G0C.dwg |                 |          |   |                            |   |



#### NOTES:

1. DISTANCES ARE MEASURED PERPENDICULAR TO NEAREST SECTION LINE AND ARE SHOWN ON THE SAME SIDE OF THE SECTION LINE WHERE THE WELL IS LOCATED.
2. THIS MAP DOES NOT REPRESENT A MONUMENTED BOUNDARY SURVEY. SIXTEENTH CORNER LOCATIONS ARE COMPUTED, UNLESS OTHERWISE NOTED.
3. BOTTOM HOLE LOCATIONS AND HORIZONTAL COMPLETION ZONE PROVIDED BY OTHERS.



0 1000

SCALE: 1" = 1000'  
U.S. SURVEY FEET

#### LEGEND

- COMPUTED ALIQUOT CORNER FROM GLO RECORDS
- ALIQUOT CORNER
- A.C. ALUMINUM CAP
- B.H. BOTTOM HOLE
- R.B. RANGE BOX
- PROPOSED WELL
- COMPUTED ALIQUOT CORNER LOCATION



**LAMP RYNEARSON  
& ASSOCIATES**

4715 Innovation Drive 970.226.0342 | P  
Fort Collins, CO 80525 970.226.0879 | F  
www.LRA-Inc.com

Proposed Well Location Exhibit  
MT-GLENFAIR C8-8-7  
2 OF 3

drawn by

JPM

date

3/26/15

cogcc id

project - task number

0210035.00-502

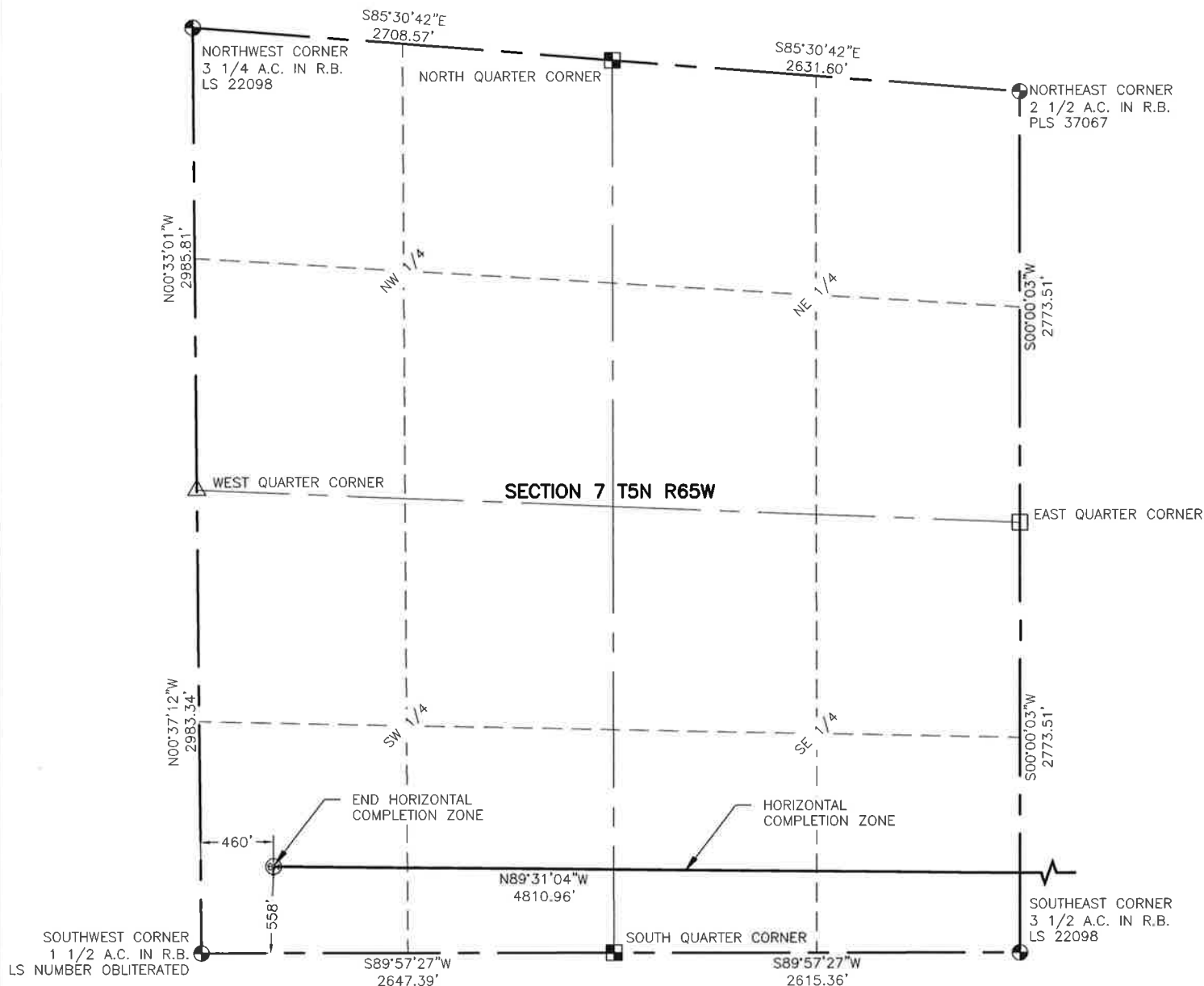
book and page

MR01/MR02

surface - location

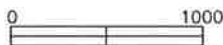
NE/4,NW/4, SEC 9 T5N R65W

path\filename P:\\_Engineering\0210035 MRI Midtown\DRAWINGS\EXHIBITS\0210035EXWP-00G1C.dwg



#### NOTES:

1. DISTANCES ARE MEASURED PERPENDICULAR TO NEAREST SECTION LINE AND ARE SHOWN ON THE SAME SIDE OF THE SECTION LINE WHERE THE WELL IS LOCATED.
2. THIS MAP DOES NOT REPRESENT A MONUMENTED BOUNDARY SURVEY. SIXTEENTH CORNER LOCATIONS ARE COMPUTED, UNLESS OTHERWISE NOTED.
3. BOTTOM HOLE LOCATIONS AND HORIZONTAL COMPLETION ZONE PROVIDED BY OTHERS.



SCALE: 1" = 1000'  
U.S. SURVEY FEET

#### LEGEND

- ALIQUOT CORNER
- ⊙ BOTTOM HOLE
- ⊠ COMPUTED ALIQUOT CORNER FROM GLO RECORDS
- △ COMPUTED ALIQUOT CORNER FROM MONUMENT ACCESSORIES
- COMPUTED ALIQUOT CORNER LOCATION
- A.C. ALUMINUM CAP
- R.B. RANGE BOX



**LAMP RYNEARSON  
& ASSOCIATES**

4715 Innovation Drive 970.226.0342 | P  
Fort Collins, CO 80525 970.226.0879 | F  
www.LRA-Inc.com

Proposed Well Location Exhibit  
MT-GLENFAIR C8-8-7  
3 OF 3

drawn by

JPM

date

3/26/15

cogcc id

project - task number

0210035.00-502

book and page

MR01/MR02

surface - location

NE/4,NW/4, SEC 9 T5N R65W

path\filename P:\\_Engineering\0210035 MRI Midtown\DRAWINGS\EXHIBITS\0210035EXWP-00G2C.dwg