

# **PDC ENERGY**

**WELD COUNTY, COLORADO**

**NE SW SEC. 7 T4N R64W 6th P.M.**

**HONEBEIN 7O-243 - Slot HONEBEIN 7O-243**

**ORIGINAL WELLBORE**

**09 July, 2015**

**Plan: PROPOSAL #2**



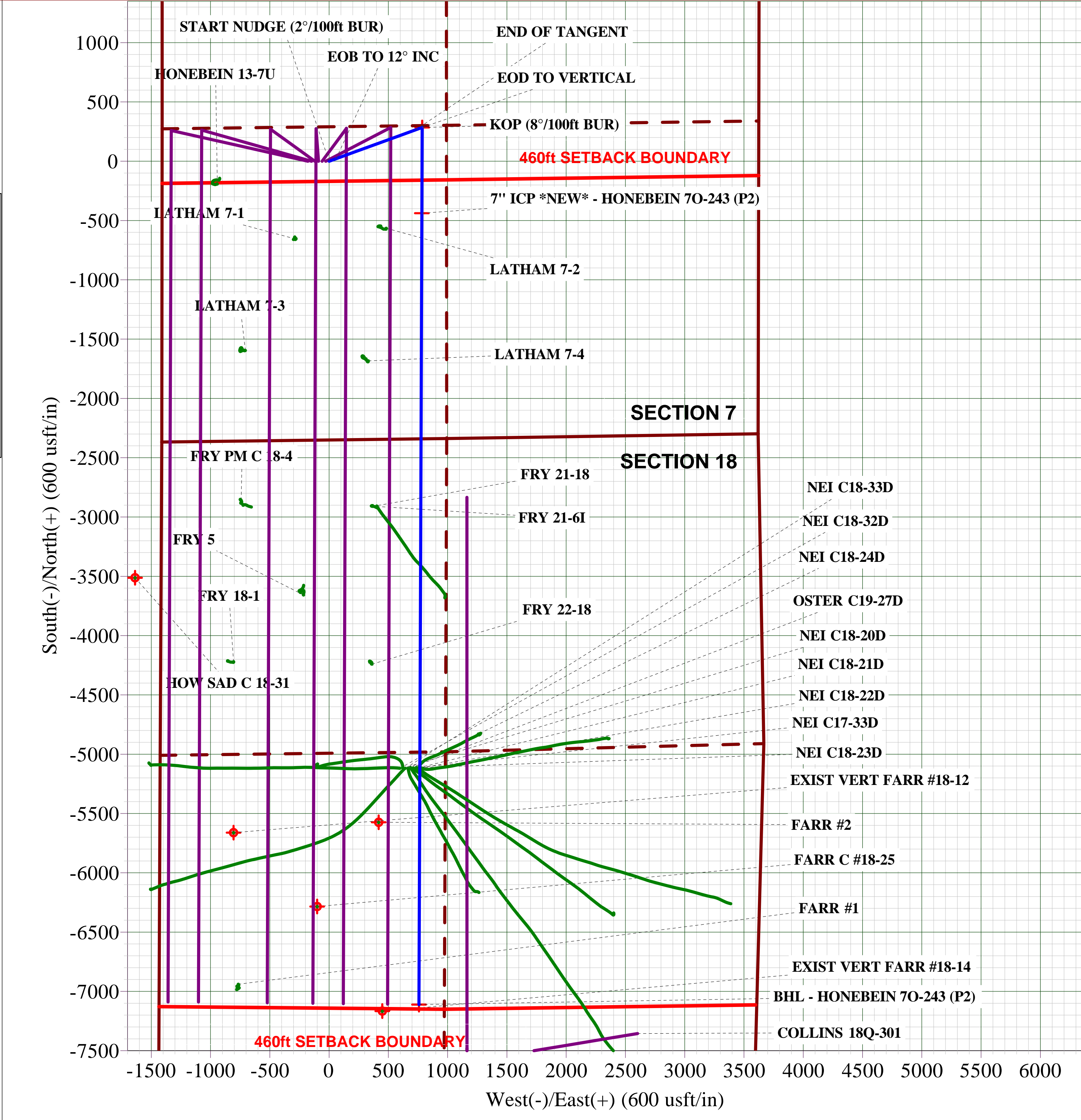
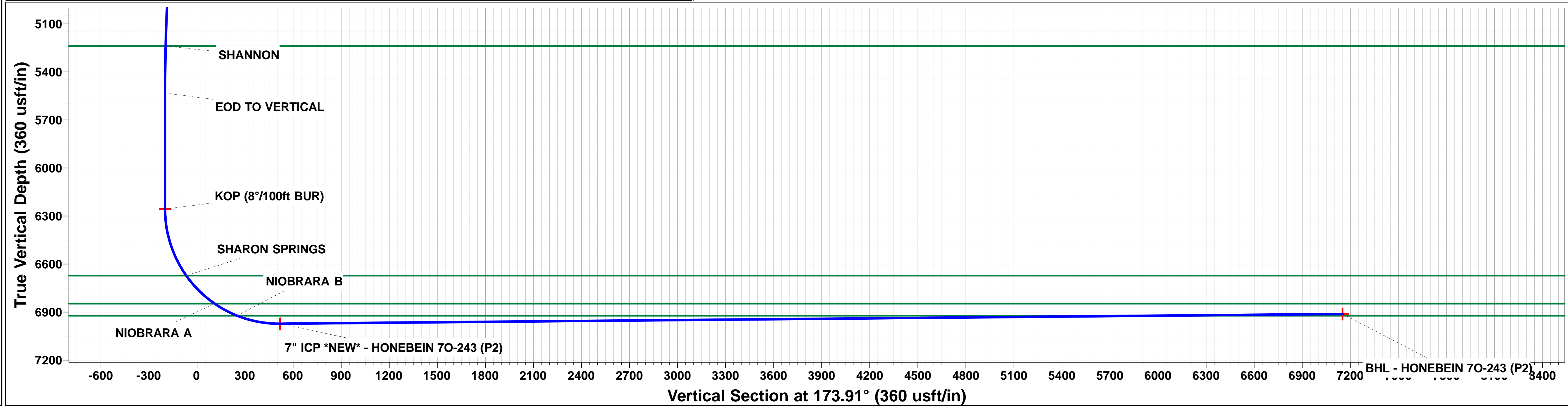
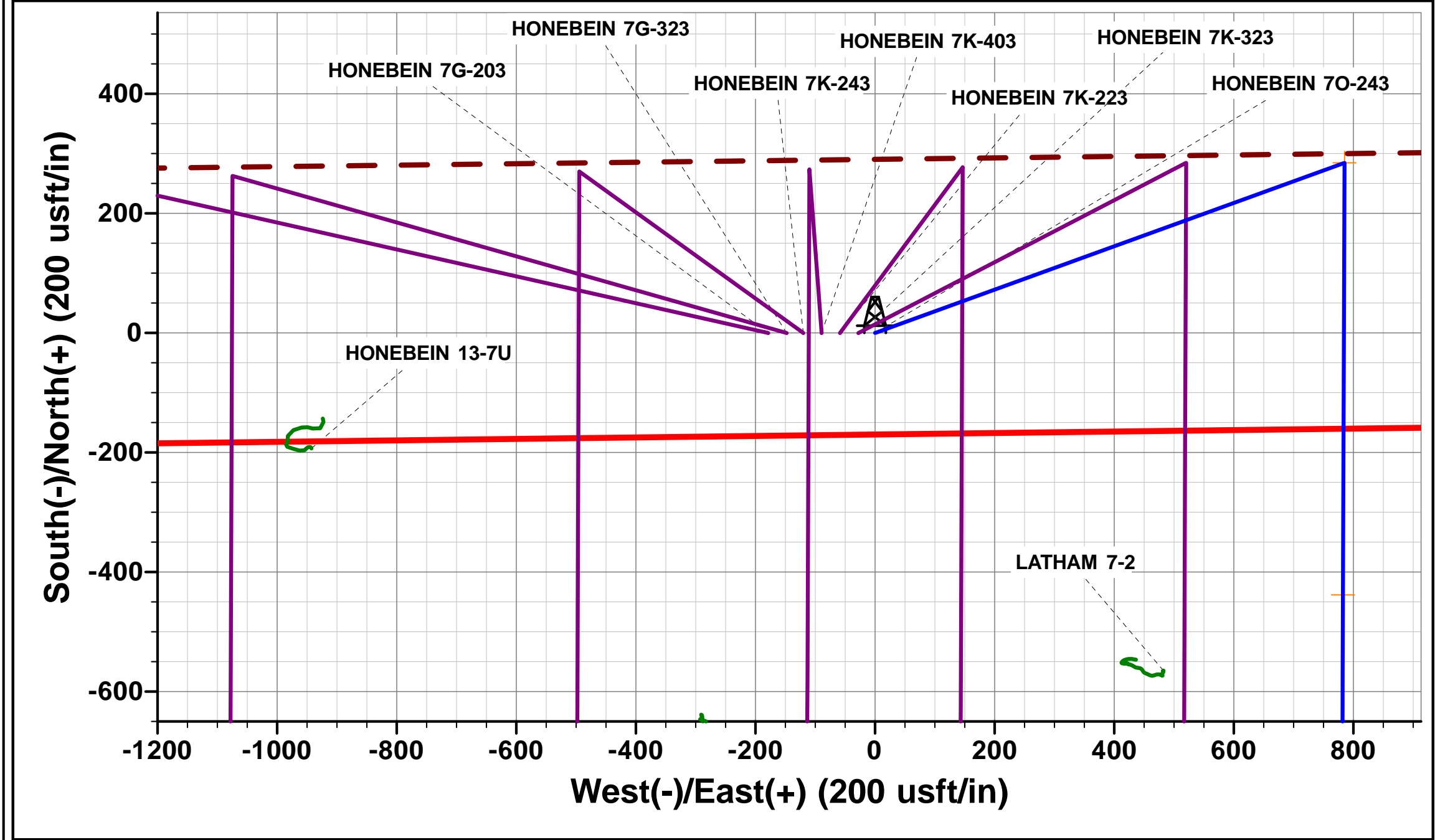
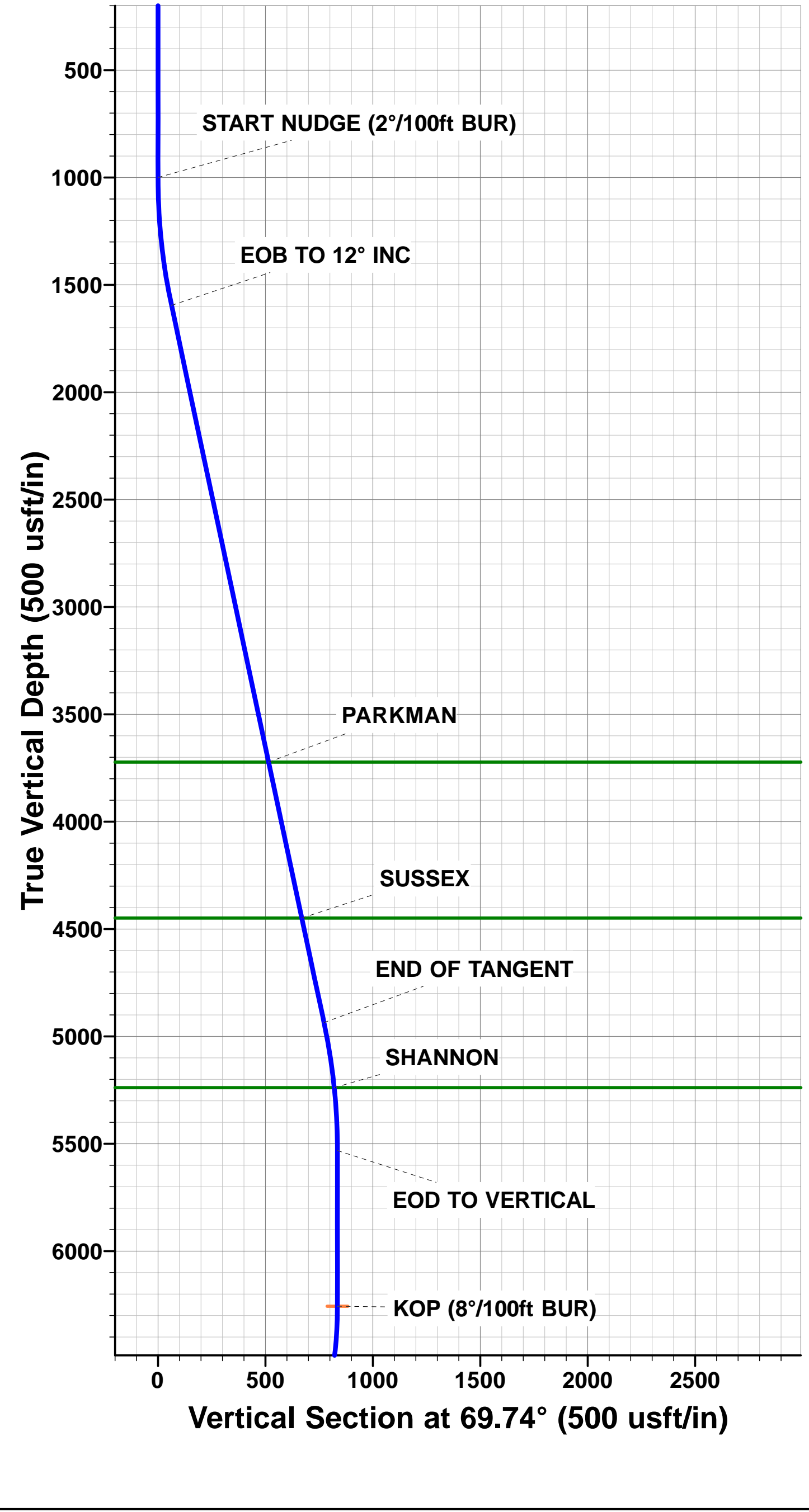


Project: WELD COUNTY, COLORADO  
Site: NE SW SEC. 7 T4N R64W 6th P.M.  
Well: HONEBEIN 70-243  
Wellbore: ORIGINAL WELLBORE  
Design: PROPOSAL #2

ANNOTATIONS										
TVD	MD	Inc	Azi	+N/-S	+E/-W	VSec	Dep	Annotation		
1000.0	1000.0	0.00	0.00	0.0	0.0	0.0	0.0	START NUDGE (2°/100ft BUR)		
1595.7	1600.1	12.00	70.08	21.3	58.9	-15.0	62.6	EOB TO 12° INC		
4935.9	5014.9	12.00	70.08	263.3	726.4	-184.7	772.7	END OF TANGENT		
5531.6	5615.0	0.00	0.00	284.6	785.3	-199.7	835.3	EOD TO VERTICAL		
6256.6	6340.0	0.00	0.00	284.6	785.3	-199.7	835.3	KOP (8°/100ft BUR)		
6972.8	7471.5	90.52	180.21	-438.1	782.7	518.7	1558.0	7" ICP *NEW* - HONEBEIN 70-243 (P2)		
6912.0	14145.0	90.52	180.20	-7111.2	758.6	7151.6	8231.2	BHL - HONEBEIN 70-243 (P2)		

PROPOSED LOCAL COORDINATES:  
  
SHL: 2352ft FSL & 1410t FWL Sec 7  
  
7" ICP \*NEW\*: 1904.3ft FSL & 2193ft FWL Sec 7  
  
BHL: 500ft FSL & 2193ft FWL of Sec 18

WELLBORE TARGET DETAILS (LAT/LONG)					
Name	TVD	+N/-S	+E/-W	Latitude	Longitude
KOP - HONEBEIN 70-243 (P2)	6256.6	284.6	785.3	40.326711	-104.594174
BHL - HONEBEIN 70-243 (P2)	6912.0	-7111.2	758.6	40.306410	-104.594270
7" ICP *NEW* - HONEBEIN 70-243 (P2)	6972.8	-438.1	782.7	40.324727	-104.594183



# Planning Report



<b>Database:</b>	EDM 5000.1 Single User Db	<b>Local Co-ordinate Reference:</b>	Well HONEBEIN 7O-243 - Slot HONEBEIN 7O-243
<b>Company:</b>	PDC ENERGY	<b>TVD Reference:</b>	KB-EST @ 4865.5usft (ENS 123)
<b>Project:</b>	WELD COUNTY, COLORADO	<b>MD Reference:</b>	KB-EST @ 4865.5usft (ENS 123)
<b>Site:</b>	NE SW SEC. 7 T4N R64W 6th P.M.	<b>North Reference:</b>	True
<b>Well:</b>	HONEBEIN 7O-243	<b>Survey Calculation Method:</b>	Minimum Curvature
<b>Wellbore:</b>	ORIGINAL WELLBORE		
<b>Design:</b>	PROPOSAL #2		

<b>Project</b>	WELD COUNTY, COLORADO		
<b>Map System:</b>	US State Plane 1983	<b>System Datum:</b>	Mean Sea Level
<b>Geo Datum:</b>	North American Datum 1983		
<b>Map Zone:</b>	Colorado Northern Zone		Using geodetic scale factor

<b>Site</b>	NE SW SEC. 7 T4N R64W 6th P.M.		
<b>Site Position:</b>		<b>Northing:</b>	1,362,859.07 usft
<b>From:</b>	Lat/Long	<b>Easting:</b>	3,251,768.07 usft
<b>Position Uncertainty:</b>	0.0 usft	<b>Slot Radius:</b>	1.10000ft
		<b>Latitude:</b>	40.325930
		<b>Longitude:</b>	-104.596990
		<b>Grid Convergence:</b>	0.58 °

<b>Well</b>	HONEBEIN 7O-243 - Slot HONEBEIN 7O-243		
<b>Well Position</b>	<b>+N/-S</b>	0.0 usft	<b>Northing:</b> 1,362,859.07 usft
	<b>+E/-W</b>	0.0 usft	<b>Easting:</b> 3,251,768.07 usft
<b>Position Uncertainty</b>	0.0 usft	<b>Wellhead Elevation:</b>	usft
		<b>Latitude:</b>	40.325930
		<b>Longitude:</b>	-104.596990
		<b>Ground Level:</b>	4,852.0 usft

<b>Wellbore</b>	ORIGINAL WELLBORE				
<b>Magnetics</b>	<b>Model Name</b>	<b>Sample Date</b>	<b>Declination (°)</b>	<b>Dip Angle (°)</b>	<b>Field Strength (nT)</b>
	IGRF2015	30/06/2015	8.32	66.87	52,595

<b>Design</b>	PROPOSAL #2			
<b>Audit Notes:</b>				
<b>Version:</b>	<b>Phase:</b>	PROTOTYPE	<b>Tie On Depth:</b>	0.0
<b>Vertical Section:</b>	<b>Depth From (TVD) (usft)</b>	<b>+N/-S (usft)</b>	<b>+E/-W (usft)</b>	<b>Direction (°)</b>
	6,912.0	0.0	0.0	173.91

<b>Plan Sections</b>											
MD (usft)	Inc (°)	Azi (°)	Vertical Depth	SS (usft)	+N/-S (usft)	+E/-W (usft)	Dogleg Rate (°/100usft)	Build Rate (°/100usft)	Turn Rate (°/100usft)	TFO (°)	Target
0.0	0.00	0.00	0.0	-4,865.5	0.0	0.0	0.00	0.00	0.00	0.00	
1,000.0	0.00	0.00	1,000.0	-3,865.5	0.0	0.0	0.00	0.00	0.00	0.00	
1,600.1	12.00	70.08	1,595.7	-3,269.8	21.3	58.9	2.00	2.00	0.00	70.08	
5,014.9	12.00	70.08	4,935.9	70.4	263.3	726.4	0.00	0.00	0.00	0.00	
5,615.0	0.00	0.00	5,531.6	666.1	284.6	785.3	2.00	-2.00	0.00	180.00	
6,340.0	0.00	0.00	6,256.6	1,391.1	284.6	785.3	0.00	0.00	0.00	0.00	KOP - HONEBEIN
7,471.5	90.52	180.21	6,972.8	2,107.3	-438.1	782.7	8.00	8.00	0.00	180.21	
14,145.0	90.52	180.20	6,912.0	2,046.5	-7,111.2	758.6	0.00	0.00	0.00	-65.00	BHL - HONEBEIN

# Planning Report



<b>Database:</b>	EDM 5000.1 Single User Db	<b>Local Co-ordinate Reference:</b>	Well HONEBEIN 70-243 - Slot HONEBEIN 70-243
<b>Company:</b>	PDC ENERGY	<b>TVD Reference:</b>	KB-EST @ 4865.5usft (ENS 123)
<b>Project:</b>	WELD COUNTY, COLORADO	<b>MD Reference:</b>	KB-EST @ 4865.5usft (ENS 123)
<b>Site:</b>	NE SW SEC. 7 T4N R64W 6th P.M.	<b>North Reference:</b>	True
<b>Well:</b>	HONEBEIN 70-243	<b>Survey Calculation Method:</b>	Minimum Curvature
<b>Wellbore:</b>	ORIGINAL WELLBORE		
<b>Design:</b>	PROPOSAL #2		

## Planned Survey

MD (usft)	Inc (°)	Azi (°)	TVD (usft)	SS (usft)	+N/-S (usft)	+E/-W (usft)	Vertical Section (usft)	Dogleg Rate (°/100usft)	Build Rate (°/100usft)	Turn Rate (°/100usft)
0.0	0.00	0.00	0.0	4,865.50	0.0	0.0	0.0	0.00	0.00	0.00
100.0	0.00	0.00	100.0	4,765.50	0.0	0.0	0.0	0.00	0.00	0.00
200.0	0.00	0.00	200.0	4,665.50	0.0	0.0	0.0	0.00	0.00	0.00
300.0	0.00	0.00	300.0	4,565.50	0.0	0.0	0.0	0.00	0.00	0.00
400.0	0.00	0.00	400.0	4,465.50	0.0	0.0	0.0	0.00	0.00	0.00
500.0	0.00	0.00	500.0	4,365.50	0.0	0.0	0.0	0.00	0.00	0.00
600.0	0.00	0.00	600.0	4,265.50	0.0	0.0	0.0	0.00	0.00	0.00
700.0	0.00	0.00	700.0	4,165.50	0.0	0.0	0.0	0.00	0.00	0.00
800.0	0.00	0.00	800.0	4,065.50	0.0	0.0	0.0	0.00	0.00	0.00
900.0	0.00	0.00	900.0	3,965.50	0.0	0.0	0.0	0.00	0.00	0.00
<b>START NUDGE (2°/100ft BUR)</b>										
1,000.0	0.00	0.00	1,000.0	3,865.50	0.0	0.0	0.0	0.00	0.00	0.00
1,100.0	2.00	70.08	1,100.0	3,765.52	0.6	1.6	-0.4	2.00	2.00	0.00
1,200.0	4.00	70.08	1,199.8	3,665.66	2.4	6.6	-1.7	2.00	2.00	0.00
1,300.0	6.00	70.08	1,299.5	3,566.05	5.3	14.8	-3.8	2.00	2.00	0.00
1,400.0	8.00	70.08	1,398.7	3,466.80	9.5	26.2	-6.7	2.00	2.00	0.00
1,500.0	10.00	70.08	1,497.5	3,368.03	14.8	40.9	-10.4	2.00	2.00	0.00
1,600.0	12.00	70.08	1,595.6	3,269.88	21.3	58.9	-15.0	2.00	2.00	0.00
<b>EOB TO 12° INC</b>										
1,600.1	12.00	70.08	1,595.7	3,269.78	21.3	58.9	-15.0	1.00	1.00	0.00
1,700.0	12.00	70.08	1,693.4	3,172.06	28.4	78.4	-19.9	0.00	0.00	0.00
1,800.0	12.00	70.08	1,791.3	3,074.25	35.5	98.0	-24.9	0.00	0.00	0.00
1,900.0	12.00	70.08	1,889.1	2,976.43	42.6	117.5	-29.9	0.00	0.00	0.00
2,000.0	12.00	70.08	1,986.9	2,878.62	49.7	137.1	-34.9	0.00	0.00	0.00
2,100.0	12.00	70.08	2,084.7	2,780.80	56.8	156.6	-39.8	0.00	0.00	0.00
2,200.0	12.00	70.08	2,182.5	2,682.99	63.8	176.1	-44.8	0.00	0.00	0.00
2,300.0	12.00	70.08	2,280.3	2,585.18	70.9	195.7	-49.8	0.00	0.00	0.00
2,400.0	12.00	70.08	2,378.1	2,487.36	78.0	215.2	-54.7	0.00	0.00	0.00
2,500.0	12.00	70.08	2,476.0	2,389.55	85.1	234.8	-59.7	0.00	0.00	0.00
2,600.0	12.00	70.08	2,573.8	2,291.73	92.2	254.3	-64.7	0.00	0.00	0.00
2,700.0	12.00	70.08	2,671.6	2,193.92	99.3	273.9	-69.6	0.00	0.00	0.00
2,800.0	12.00	70.08	2,769.4	2,096.10	106.3	293.4	-74.6	0.00	0.00	0.00
2,900.0	12.00	70.08	2,867.2	1,998.29	113.4	313.0	-79.6	0.00	0.00	0.00
3,000.0	12.00	70.08	2,965.0	1,900.48	120.5	332.5	-84.6	0.00	0.00	0.00
3,100.0	12.00	70.08	3,062.8	1,802.66	127.6	352.1	-89.5	0.00	0.00	0.00
3,200.0	12.00	70.08	3,160.7	1,704.85	134.7	371.6	-94.5	0.00	0.00	0.00
3,300.0	12.00	70.08	3,258.5	1,607.03	141.8	391.2	-99.5	0.00	0.00	0.00
3,400.0	12.00	70.08	3,356.3	1,509.22	148.9	410.7	-104.4	0.00	0.00	0.00
3,500.0	12.00	70.08	3,454.1	1,411.40	155.9	430.3	-109.4	0.00	0.00	0.00
3,600.0	12.00	70.08	3,551.9	1,313.59	163.0	449.8	-114.4	0.00	0.00	0.00
3,700.0	12.00	70.08	3,649.7	1,215.77	170.1	469.4	-119.4	0.00	0.00	0.00
<b>PARKMAN</b>										
3,774.4	12.00	70.08	3,722.5	1,143.00	175.4	483.9	-123.1	0.00	0.00	0.00
3,800.0	12.00	70.08	3,747.5	1,117.96	177.2	488.9	-124.3	0.00	0.00	0.00
3,900.0	12.00	70.08	3,845.4	1,020.15	184.3	508.5	-129.3	0.00	0.00	0.00
4,000.0	12.00	70.08	3,943.2	922.33	191.4	528.0	-134.3	0.00	0.00	0.00
4,100.0	12.00	70.08	4,041.0	824.52	198.4	547.6	-139.2	0.00	0.00	0.00
4,200.0	12.00	70.08	4,138.8	726.70	205.5	567.1	-144.2	0.00	0.00	0.00
4,300.0	12.00	70.08	4,236.6	628.89	212.6	586.7	-149.2	0.00	0.00	0.00
4,400.0	12.00	70.08	4,334.4	531.07	219.7	606.2	-154.2	0.00	0.00	0.00
4,500.0	12.00	70.08	4,432.2	433.26	226.8	625.8	-159.1	0.00	0.00	0.00
<b>SUSSEX</b>										
4,516.6	12.00	70.08	4,448.5	417.00	228.0	629.0	-160.0	0.00	0.00	0.00



# Planning Report



<b>Database:</b>	EDM 5000.1 Single User Db	<b>Local Co-ordinate Reference:</b>	Well HONEBEIN 70-243 - Slot HONEBEIN 70-243
<b>Company:</b>	PDC ENERGY	<b>TVD Reference:</b>	KB-EST @ 4865.5usft (ENS 123)
<b>Project:</b>	WELD COUNTY, COLORADO	<b>MD Reference:</b>	KB-EST @ 4865.5usft (ENS 123)
<b>Site:</b>	NE SW SEC. 7 T4N R64W 6th P.M.	<b>North Reference:</b>	True
<b>Well:</b>	HONEBEIN 70-243	<b>Survey Calculation Method:</b>	Minimum Curvature
<b>Wellbore:</b>	ORIGINAL WELLBORE		
<b>Design:</b>	PROPOSAL #2		

## Planned Survey

MD (usft)	Inc (°)	Azi (°)	TVD (usft)	SS (usft)	+N/-S (usft)	+E/-W (usft)	Vertical Section (usft)	Dogleg Rate (°/100usft)	Build Rate (°/100usft)	Turn Rate (°/100usft)
4,600.0	12.00	70.08	4,530.1	335.45	233.9	645.3	-164.1	0.00	0.00	0.00
4,700.0	12.00	70.08	4,627.9	237.63	241.0	664.9	-169.1	0.00	0.00	0.00
4,800.0	12.00	70.08	4,725.7	139.82	248.0	684.4	-174.0	0.00	0.00	0.00
4,900.0	12.00	70.08	4,823.5	42.00	255.1	704.0	-179.0	0.00	0.00	0.00
5,000.0	12.00	70.08	4,921.3	-55.81	262.2	723.5	-184.0	0.00	0.00	0.00
<b>END OF TANGENT</b>										
<b>5,014.9</b>	<b>12.00</b>	<b>70.08</b>	<b>4,935.9</b>	<b>-70.39</b>	<b>263.3</b>	<b>726.4</b>	<b>-184.7</b>	<b>0.00</b>	<b>0.00</b>	<b>0.00</b>
5,100.0	10.30	70.08	5,019.4	-153.88	268.9	741.9	-188.7	2.00	-2.00	0.00
5,200.0	8.30	70.08	5,118.1	-252.56	274.4	757.1	-192.5	2.00	-2.00	0.00
5,300.0	6.30	70.08	5,217.2	-351.74	278.7	769.0	-195.6	2.00	-2.00	0.00
<b>SHANNON</b>										
<b>5,321.4</b>	<b>5.87</b>	<b>70.08</b>	<b>5,238.5</b>	<b>-373.00</b>	<b>279.5</b>	<b>771.2</b>	<b>-196.1</b>	<b>2.00</b>	<b>-2.00</b>	<b>0.00</b>
5,400.0	4.30	70.08	5,316.8	-451.31	281.9	777.7	-197.8	2.00	-2.00	0.00
5,500.0	2.30	70.08	5,416.6	-551.14	283.8	783.1	-199.1	2.00	-2.00	0.00
5,600.0	0.30	70.08	5,516.6	-651.11	284.6	785.3	-199.7	2.00	-2.00	0.00
<b>EOD TO VERTICAL</b>										
<b>5,615.0</b>	<b>0.00</b>	<b>0.00</b>	<b>5,531.6</b>	<b>-666.11</b>	<b>284.6</b>	<b>785.3</b>	<b>-199.7</b>	<b>2.00</b>	<b>-2.00</b>	<b>0.00</b>
5,700.0	0.00	0.00	5,616.6	-751.11	284.6	785.3	-199.7	0.00	0.00	0.00
5,800.0	0.00	0.00	5,716.6	-851.11	284.6	785.3	-199.7	0.00	0.00	0.00
5,900.0	0.00	0.00	5,816.6	-951.11	284.6	785.3	-199.7	0.00	0.00	0.00
6,000.0	0.00	0.00	5,916.6	-1,051.11	284.6	785.3	-199.7	0.00	0.00	0.00
6,100.0	0.00	0.00	6,016.6	-1,151.11	284.6	785.3	-199.7	0.00	0.00	0.00
6,200.0	0.00	0.00	6,116.6	-1,251.11	284.6	785.3	-199.7	0.00	0.00	0.00
6,300.0	0.00	0.00	6,216.6	-1,351.11	284.6	785.3	-199.7	0.00	0.00	0.00
<b>KOP (8°/100ft BUR)</b>										
<b>6,340.0</b>	<b>0.00</b>	<b>0.00</b>	<b>6,256.6</b>	<b>-1,391.11</b>	<b>284.6</b>	<b>785.3</b>	<b>-199.7</b>	<b>0.00</b>	<b>0.00</b>	<b>0.00</b>
6,400.0	4.80	180.21	6,316.5	-1,451.04	282.1	785.3	-197.2	8.00	8.00	0.00
6,500.0	12.80	180.21	6,415.3	-1,549.78	266.8	785.2	-182.0	8.00	8.00	0.00
6,600.0	20.80	180.21	6,510.9	-1,645.43	237.9	785.1	-153.3	8.00	8.00	0.00
6,700.0	28.80	180.21	6,601.6	-1,736.14	196.0	785.0	-111.6	8.00	8.00	0.00
<b>SHARON SPRINGS</b>										
<b>6,783.7</b>	<b>35.50</b>	<b>180.21</b>	<b>6,672.5</b>	<b>-1,807.00</b>	<b>151.5</b>	<b>784.8</b>	<b>-67.4</b>	<b>8.00</b>	<b>8.00</b>	<b>0.00</b>
6,800.0	36.80	180.21	6,685.6	-1,820.13	141.9	784.8	-57.8	8.00	8.00	0.00
6,900.0	44.80	180.21	6,761.3	-1,895.76	76.6	784.5	7.1	8.00	8.00	0.00
7,000.0	52.80	180.21	6,827.1	-1,961.58	1.4	784.3	81.8	8.00	8.00	0.00
<b>NIORARA A</b>										
<b>7,034.9</b>	<b>55.59</b>	<b>180.21</b>	<b>6,847.5</b>	<b>-1,982.00</b>	<b>-26.9</b>	<b>784.2</b>	<b>109.9</b>	<b>8.00</b>	<b>8.00</b>	<b>0.00</b>
7,100.0	60.80	180.21	6,881.8	-2,016.29	-82.2	784.0	164.9	8.00	8.00	0.00
<b>NIORARA B</b>										
<b>7,195.0</b>	<b>68.40</b>	<b>180.21</b>	<b>6,922.5</b>	<b>-2,057.00</b>	<b>-167.9</b>	<b>783.6</b>	<b>250.1</b>	<b>8.00</b>	<b>8.00</b>	<b>0.00</b>
7,200.0	68.80	180.21	6,924.3	-2,058.83	-172.6	783.6	254.8	8.00	8.00	0.00
7,300.0	76.80	180.21	6,953.9	-2,088.38	-268.1	783.3	349.6	8.00	8.00	0.00
7,400.0	84.80	180.21	6,969.9	-2,104.35	-366.7	782.9	447.7	8.00	8.00	0.00
<b>7" ICP *NEW* - HONEBEIN 70-243 (P2)</b>										
<b>7,471.5</b>	<b>90.52</b>	<b>180.21</b>	<b>6,972.8</b>	<b>-2,107.27</b>	<b>-438.1</b>	<b>782.7</b>	<b>518.7</b>	<b>8.00</b>	<b>8.00</b>	<b>0.00</b>
7,500.0	90.52	180.21	6,972.5	-2,107.01	-466.6	782.5	547.0	0.00	0.00	0.00
7,600.0	90.52	180.21	6,971.6	-2,106.10	-566.6	782.2	646.4	0.00	0.00	0.00
7,700.0	90.52	180.21	6,970.7	-2,105.19	-666.6	781.8	745.8	0.00	0.00	0.00
7,800.0	90.52	180.21	6,969.8	-2,104.29	-766.6	781.4	845.2	0.00	0.00	0.00
7,900.0	90.52	180.21	6,968.9	-2,103.38	-866.6	781.1	944.5	0.00	0.00	0.00
8,000.0	90.52	180.21	6,968.0	-2,102.47	-966.6	780.7	1,043.9	0.00	0.00	0.00
8,100.0	90.52	180.21	6,967.1	-2,101.56	-1,066.6	780.4	1,143.3	0.00	0.00	0.00

# Planning Report



<b>Database:</b>	EDM 5000.1 Single User Db	<b>Local Co-ordinate Reference:</b>	Well HONEBEIN 70-243 - Slot HONEBEIN 70-243
<b>Company:</b>	PDC ENERGY	<b>TVD Reference:</b>	KB-EST @ 4865.5usft (ENS 123)
<b>Project:</b>	WELD COUNTY, COLORADO	<b>MD Reference:</b>	KB-EST @ 4865.5usft (ENS 123)
<b>Site:</b>	NE SW SEC. 7 T4N R64W 6th P.M.	<b>North Reference:</b>	True
<b>Well:</b>	HONEBEIN 70-243	<b>Survey Calculation Method:</b>	Minimum Curvature
<b>Wellbore:</b>	ORIGINAL WELLBORE		
<b>Design:</b>	PROPOSAL #2		

Planned Survey										
MD (usft)	Inc (°)	Azi (°)	TVD (usft)	SS (usft)	+N/-S (usft)	+E/-W (usft)	Vertical Section (usft)	Dogleg Rate (°/100usft)	Build Rate (°/100usft)	Turn Rate (°/100usft)
8,200.0	90.52	180.21	6,966.2	-2,100.65	-1,166.6	780.0	1,242.7	0.00	0.00	0.00
8,300.0	90.52	180.21	6,965.2	-2,099.75	-1,266.6	779.6	1,342.1	0.00	0.00	0.00
8,400.0	90.52	180.21	6,964.3	-2,098.84	-1,366.6	779.3	1,441.5	0.00	0.00	0.00
8,500.0	90.52	180.21	6,963.4	-2,097.93	-1,466.6	778.9	1,540.9	0.00	0.00	0.00
8,600.0	90.52	180.21	6,962.5	-2,097.02	-1,566.5	778.5	1,640.3	0.00	0.00	0.00
8,700.0	90.52	180.21	6,961.6	-2,096.11	-1,666.5	778.2	1,739.7	0.00	0.00	0.00
8,800.0	90.52	180.21	6,960.7	-2,095.20	-1,766.5	777.8	1,839.1	0.00	0.00	0.00
8,900.0	90.52	180.21	6,959.8	-2,094.29	-1,866.5	777.4	1,938.5	0.00	0.00	0.00
9,000.0	90.52	180.21	6,958.9	-2,093.39	-1,966.5	777.1	2,037.9	0.00	0.00	0.00
9,100.0	90.52	180.21	6,958.0	-2,092.48	-2,066.5	776.7	2,137.3	0.00	0.00	0.00
9,200.0	90.52	180.21	6,957.1	-2,091.57	-2,166.5	776.3	2,236.6	0.00	0.00	0.00
9,300.0	90.52	180.21	6,956.2	-2,090.66	-2,266.5	776.0	2,336.0	0.00	0.00	0.00
9,400.0	90.52	180.21	6,955.2	-2,089.75	-2,366.5	775.6	2,435.4	0.00	0.00	0.00
9,500.0	90.52	180.21	6,954.3	-2,088.84	-2,466.5	775.3	2,534.8	0.00	0.00	0.00
9,600.0	90.52	180.21	6,953.4	-2,087.93	-2,566.5	774.9	2,634.2	0.00	0.00	0.00
9,700.0	90.52	180.21	6,952.5	-2,087.02	-2,666.5	774.5	2,733.6	0.00	0.00	0.00
9,800.0	90.52	180.21	6,951.6	-2,086.11	-2,766.5	774.2	2,833.0	0.00	0.00	0.00
9,900.0	90.52	180.21	6,950.7	-2,085.20	-2,866.5	773.8	2,932.4	0.00	0.00	0.00
10,000.0	90.52	180.21	6,949.8	-2,084.29	-2,966.5	773.4	3,031.8	0.00	0.00	0.00
10,100.0	90.52	180.21	6,948.9	-2,083.38	-3,066.5	773.1	3,131.2	0.00	0.00	0.00
10,200.0	90.52	180.21	6,948.0	-2,082.47	-3,166.5	772.7	3,230.6	0.00	0.00	0.00
10,300.0	90.52	180.21	6,947.1	-2,081.56	-3,266.5	772.4	3,330.0	0.00	0.00	0.00
10,400.0	90.52	180.21	6,946.2	-2,080.65	-3,366.5	772.0	3,429.4	0.00	0.00	0.00
10,500.0	90.52	180.21	6,945.2	-2,079.74	-3,466.5	771.6	3,528.8	0.00	0.00	0.00
10,600.0	90.52	180.21	6,944.3	-2,078.83	-3,566.5	771.3	3,628.1	0.00	0.00	0.00
10,700.0	90.52	180.21	6,943.4	-2,077.92	-3,666.4	770.9	3,727.5	0.00	0.00	0.00
10,800.0	90.52	180.21	6,942.5	-2,077.01	-3,766.4	770.6	3,826.9	0.00	0.00	0.00
10,900.0	90.52	180.21	6,941.6	-2,076.10	-3,866.4	770.2	3,926.3	0.00	0.00	0.00
11,000.0	90.52	180.21	6,940.7	-2,075.19	-3,966.4	769.8	4,025.7	0.00	0.00	0.00
11,100.0	90.52	180.21	6,939.8	-2,074.28	-4,066.4	769.5	4,125.1	0.00	0.00	0.00
11,200.0	90.52	180.21	6,938.9	-2,073.37	-4,166.4	769.1	4,224.5	0.00	0.00	0.00
11,300.0	90.52	180.21	6,938.0	-2,072.46	-4,266.4	768.8	4,323.9	0.00	0.00	0.00
11,400.0	90.52	180.21	6,937.0	-2,071.54	-4,366.4	768.4	4,423.3	0.00	0.00	0.00
11,500.0	90.52	180.21	6,936.1	-2,070.63	-4,466.4	768.0	4,522.7	0.00	0.00	0.00
11,600.0	90.52	180.21	6,935.2	-2,069.72	-4,566.4	767.7	4,622.1	0.00	0.00	0.00
11,700.0	90.52	180.21	6,934.3	-2,068.81	-4,666.4	767.3	4,721.5	0.00	0.00	0.00
11,800.0	90.52	180.21	6,933.4	-2,067.90	-4,766.4	767.0	4,820.9	0.00	0.00	0.00
11,900.0	90.52	180.21	6,932.5	-2,066.99	-4,866.4	766.6	4,920.3	0.00	0.00	0.00
12,000.0	90.52	180.20	6,931.6	-2,066.08	-4,966.4	766.3	5,019.6	0.00	0.00	0.00
12,100.0	90.52	180.20	6,930.7	-2,065.16	-5,066.4	765.9	5,119.0	0.00	0.00	0.00
12,200.0	90.52	180.20	6,929.8	-2,064.25	-5,166.4	765.5	5,218.4	0.00	0.00	0.00
12,300.0	90.52	180.20	6,928.8	-2,063.34	-5,266.4	765.2	5,317.8	0.00	0.00	0.00
12,400.0	90.52	180.20	6,927.9	-2,062.43	-5,366.4	764.8	5,417.2	0.00	0.00	0.00
12,500.0	90.52	180.20	6,927.0	-2,061.52	-5,466.4	764.5	5,516.6	0.00	0.00	0.00
12,600.0	90.52	180.20	6,926.1	-2,060.60	-5,566.4	764.1	5,616.0	0.00	0.00	0.00
12,700.0	90.52	180.20	6,925.2	-2,059.69	-5,666.3	763.8	5,715.4	0.00	0.00	0.00
12,800.0	90.52	180.20	6,924.3	-2,058.78	-5,766.3	763.4	5,814.8	0.00	0.00	0.00
12,900.0	90.52	180.20	6,923.4	-2,057.87	-5,866.3	763.0	5,914.2	0.00	0.00	0.00
13,000.0	90.52	180.20	6,922.5	-2,056.95	-5,966.3	762.7	6,013.6	0.00	0.00	0.00
13,100.0	90.52	180.20	6,921.5	-2,056.04	-6,066.3	762.3	6,113.0	0.00	0.00	0.00
13,200.0	90.52	180.20	6,920.6	-2,055.13	-6,166.3	762.0	6,212.4	0.00	0.00	0.00
13,300.0	90.52	180.20	6,919.7	-2,054.22	-6,266.3	761.6	6,311.8	0.00	0.00	0.00
13,400.0	90.52	180.20	6,918.8	-2,053.30	-6,366.3	761.3	6,411.1	0.00	0.00	0.00

# Planning Report



<b>Database:</b>	EDM 5000.1 Single User Db	<b>Local Co-ordinate Reference:</b>	Well HONEBEIN 7O-243 - Slot HONEBEIN 7O-243
<b>Company:</b>	PDC ENERGY	<b>TVD Reference:</b>	KB-EST @ 4865.5usft (ENS 123)
<b>Project:</b>	WELD COUNTY, COLORADO	<b>MD Reference:</b>	KB-EST @ 4865.5usft (ENS 123)
<b>Site:</b>	NE SW SEC. 7 T4N R64W 6th P.M.	<b>North Reference:</b>	True
<b>Well:</b>	HONEBEIN 7O-243	<b>Survey Calculation Method:</b>	Minimum Curvature
<b>Wellbore:</b>	ORIGINAL WELLBORE		
<b>Design:</b>	PROPOSAL #2		

Planned Survey										
MD (usft)	Inc (°)	Azi (°)	TVD (usft)	SS (usft)	+N/-S (usft)	+E/-W (usft)	Vertical Section (usft)	Dogleg Rate (°/100usft)	Build Rate (°/100usft)	Turn Rate (°/100usft)
13,500.0	90.52	180.20	6,917.9	-2,052.39	-6,466.3	760.9	6,510.5	0.00	0.00	0.00
13,600.0	90.52	180.20	6,917.0	-2,051.48	-6,566.3	760.6	6,609.9	0.00	0.00	0.00
13,700.0	90.52	180.20	6,916.1	-2,050.56	-6,666.3	760.2	6,709.3	0.00	0.00	0.00
13,800.0	90.52	180.20	6,915.2	-2,049.65	-6,766.3	759.8	6,808.7	0.00	0.00	0.00
13,900.0	90.52	180.20	6,914.2	-2,048.74	-6,866.3	759.5	6,908.1	0.00	0.00	0.00
14,000.0	90.52	180.20	6,913.3	-2,047.82	-6,966.3	759.1	7,007.5	0.00	0.00	0.00
14,100.0	90.52	180.20	6,912.4	-2,046.91	-7,066.3	758.8	7,106.9	0.00	0.00	0.00
<b>BHL - HONEBEIN 7O-243 (P2)</b>										
<b>14,145.0</b>	<b>90.52</b>	<b>180.20</b>	<b>6,912.0</b>	<b>-2,046.50</b>	<b>-7,111.2</b>	<b>758.6</b>	<b>7,151.6</b>	<b>0.00</b>	<b>0.00</b>	<b>0.00</b>

Formations						
MD (usft)	TVD (usft)	Name	Lithology	Dip (°)	Dip Direction (°)	
3,774.4	3,722.5	PARKMAN		0.00		
4,516.6	4,448.5	SUSSEX		0.00		
5,321.4	5,238.5	SHANNON		0.00		
6,783.7	6,672.5	SHARON SPRINGS		0.00		
7,034.9	6,847.5	NIOBRARA A		0.00		
7,195.0	6,922.5	NIOBRARA B		0.00		

Plan Annotations				
MD (usft)	TVD (usft)	Local Coordinates		Comment
		+N/-S (usft)	+E/-W (usft)	
1,000.0	1,000.0	0.0	0.0	START NUDGE (2°/100ft BUR)
1,600.1	1,595.7	21.3	58.9	EOB TO 12° INC
5,014.9	4,935.9	263.3	726.4	END OF TANGENT
5,615.0	5,531.6	284.6	785.3	EOD TO VERTICAL
6,340.0	6,256.6	284.6	785.3	KOP (8°/100ft BUR)
7,471.5	6,972.8	-438.1	782.7	7" ICP *NEW* - HONEBEIN 7O-243 (P2)
14,145.0	6,912.0	-7,111.2	758.6	BHL - HONEBEIN 7O-243 (P2)