



Bill Barrett Corporation

Bill Barrett Corp.

Weld Co., CO

Sec.9-T4N-R62W

Anschutz Eq Farms 4-62-9-4956C2

Wellbore #1

Plan: Design #1

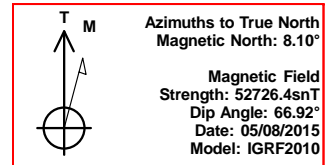
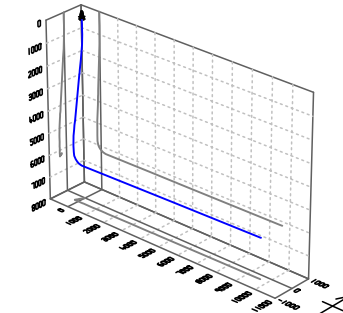
Standard Planning Report

11 May, 2015



Bill Barrett Corp.
Project: Weld Co., CO
Site: Sec.9-T4N-R62W
Well: Anschutz Eq Farms 4-62-9-4956C2
Wellbore: Wellbore #1
Design: Design #1
Lat: 40° 19' 20.831 N
Long: 104° 20' 17.830 W
Pad GL: 4526.00
KB: Well @ 4542.00usft

Archer



SECTION DETAILS

MD	Inc	Azi	TVD	+N/-S	+E/-W	Dleg	TFace	VSec	Annotation
0.00	0.00	0.00	0.00	0.00	0.00	0.00	0.00	0.00	
900.00	0.00	0.00	900.00	0.00	0.00	0.00	0.00	0.00	Start Build 2.00
1212.65	6.25	207.61	1212.03	-15.10	-7.90	2.00	207.61	-8.09	Start 3797.07 hold at 1212.65 MD
5009.72	6.25	207.61	4986.51	-381.59	-199.56	0.00	0.00	-204.34	Start Drop -2.00
5322.37	0.00	0.00	5298.54	-396.69	-207.46	2.00	180.00	-212.43	Start 500.02 hold at 5322.37 MD
5822.39	0.00	0.00	5798.56	-396.69	-207.46	0.00	0.00	-212.43	Start Build 12.00
6577.49	90.61	89.28	6276.00	-390.65	275.07	12.00	89.28	270.14	Start 9355.94 hold at 6577.49 MD
15933.43	90.61	89.28	6176.00	-273.52	9629.74	0.00	0.00	9625.55	TD at 15933.43

WELL DETAILS: Anschutz Eq Farms 4-62-9-4956C2

+N/-S	+E/-W	Northing	Ground Level: Easting	Latitude	Longitude	Slot
0.00	0.00	1362432.260	3323910.212	40° 19' 20.831 N	104° 20' 17.830 W	

PROJECT DETAILS: Weld Co., CO

Geodetic System: US State Plane 1983
Datum: North American Datum 1983
Ellipsoid: GRS 1980
Zone: Colorado Northern Zone

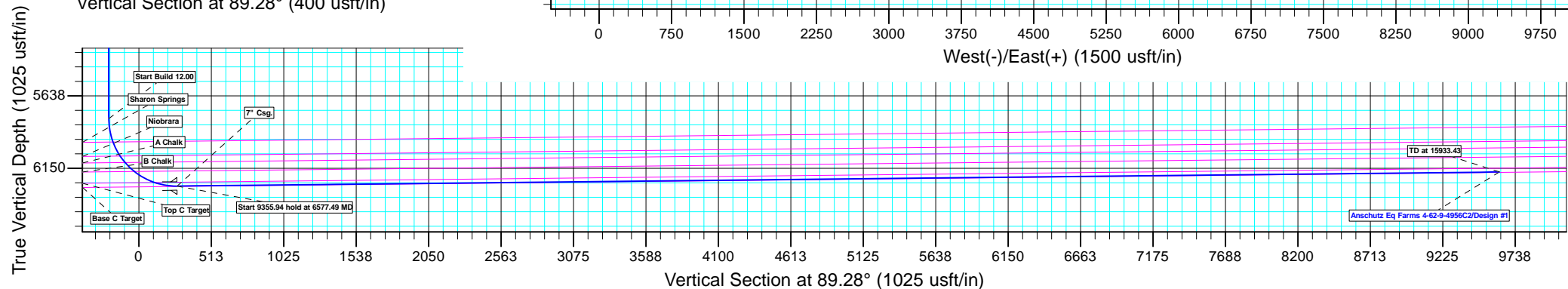
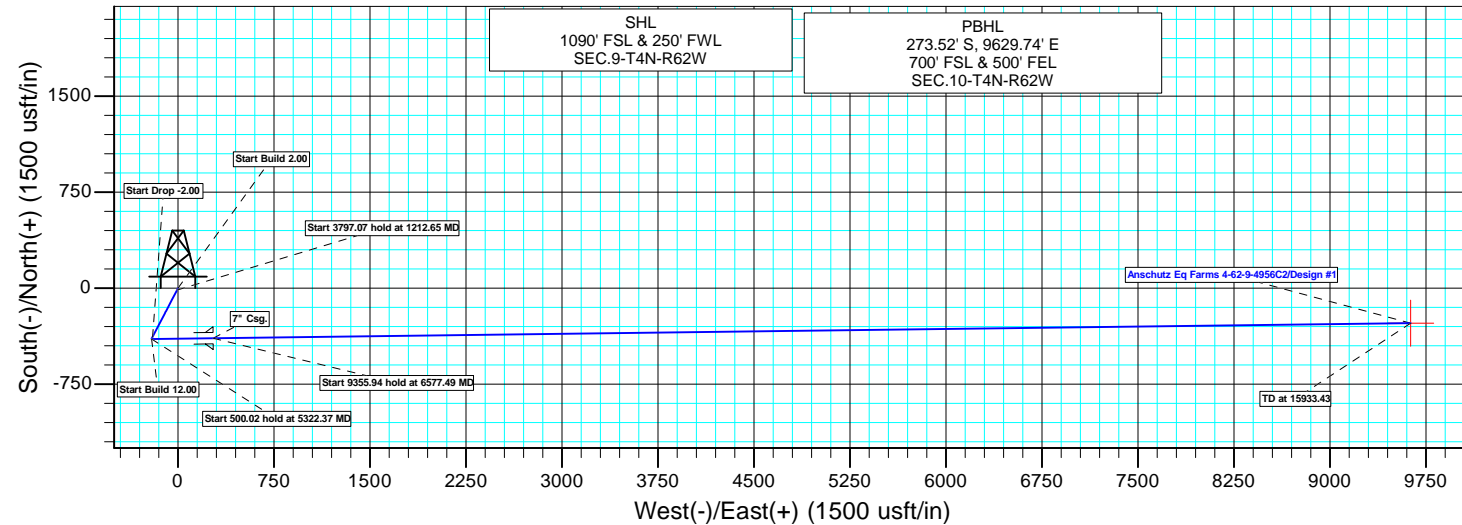
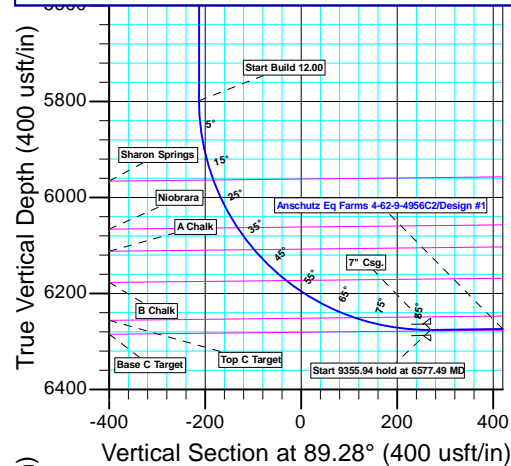
System Datum: Mean Sea Level

CASING DETAILS

TVD	MD	Name
6276.00	6577.49	7" Csg.

WELLBORE TARGET DETAILS (LAT/LONG)

Name	TVD	+N/-S	+E/-W	Latitude	Longitude	Shape Point
Anschutz eq Farms 4-62-9-4956C2 tgt	6176.00	-273.52	9629.74	40° 19' 18.109 N	104° 18' 13.500 W	



Plan: Design #1 (Anschutz Eq Farms 4-62-9-4956C2/Wellbore #1)

Created By: Ricky Osburn

Date: 8:47, May 11 2015

Database:	EDMDBBW	Local Co-ordinate Reference:	Well Anschutz Eq Farms 4-62-9-4956C2
Company:	Bill Barrett Corp.	TVD Reference:	Well @ 4542.00usft
Project:	Weld Co., CO	MD Reference:	Well @ 4542.00usft
Site:	Sec.9-T4N-R62W	North Reference:	True
Well:	Anschutz Eq Farms 4-62-9-4956C2	Survey Calculation Method:	Minimum Curvature
Wellbore:	Wellbore #1		
Design:	Design #1		

Project	Weld Co., CO		
Map System:	US State Plane 1983	System Datum:	Mean Sea Level
Geo Datum:	North American Datum 1983		
Map Zone:	Colorado Northern Zone		

Site		Sec.9-T4N-R62W			
Site Position:		Northing:	1,361,884.480 usft	Latitude:	40° 19' 15.341 N
From:	Lat/Long	Easting:	3,324,505.224 usft	Longitude:	104° 20' 10.241 W
Position Uncertainty:	0.00 usft	Slot Radius:	13-3/16 "	Grid Convergence:	0.75 °

Well	Anschutz Eq Farms 4-62-9-4956C2					
Well Position	+N/-S	555.54 usft	Northing:	1,362,432.260 usft	Latitude:	40° 19' 20.831 N
	+E/-W	-587.77 usft	Easting:	3,323,910.212 usft	Longitude:	104° 20' 17.830 W
Position Uncertainty		0.00 usft	Wellhead Elevation:	0.00 usft	Ground Level:	4,526.00 usft

Wellbore	Wellbore #1				
Magnetics	Model Name	Sample Date	Declination (°)	Dip Angle (°)	Field Strength (nT)
	IGRF2010	2015/05/08	8.10	66.92	52,726

Design	Design #1			
Audit Notes:				
Version:	Phase:	PLAN	Tie On Depth:	0.00
Vertical Section:	Depth From (TVD) (usft)	+N/-S (usft)	+E/-W (usft)	Direction (°)
	0.00	0.00	0.00	89.28

Plan Sections										
Measured Depth (usft)	Inclination (°)	Azimuth (°)	Vertical Depth (usft)	+N/-S (usft)	+E/-W (usft)	Dogleg Rate (°/100usft)	Build Rate (°/100usft)	Turn Rate (°/100usft)	TFO (°)	Target
0.00	0.00	0.00	0.00	0.00	0.00	0.00	0.00	0.00	0.00	
900.00	0.00	0.00	900.00	0.00	0.00	0.00	0.00	0.00	0.00	
1,212.65	6.25	207.61	1,212.03	-15.10	-7.90	2.00	2.00	0.00	207.61	
5,009.72	6.25	207.61	4,986.51	-381.59	-199.56	0.00	0.00	0.00	0.00	
5,322.37	0.00	0.00	5,298.54	-396.69	-207.46	2.00	-2.00	0.00	180.00	
5,822.39	0.00	0.00	5,798.56	-396.69	-207.46	0.00	0.00	0.00	0.00	
6,577.49	90.61	89.28	6,276.00	-390.65	275.07	12.00	12.00	0.00	89.28	Anschutz eq Farms 4-
15,933.43	90.61	89.28	6,176.00	-273.52	9,629.74	0.00	0.00	0.00	0.00	Anschutz eq Farms 4-

Database:	EDMDBBW	Local Co-ordinate Reference:	Well Anschutz Eq Farms 4-62-9-4956C2
Company:	Bill Barrett Corp.	TVD Reference:	Well @ 4542.00usft
Project:	Weld Co., CO	MD Reference:	Well @ 4542.00usft
Site:	Sec.9-T4N-R62W	North Reference:	True
Well:	Anschutz Eq Farms 4-62-9-4956C2	Survey Calculation Method:	Minimum Curvature
Wellbore:	Wellbore #1		
Design:	Design #1		

Planned Survey									
Measured Depth (usft)	Inclination (°)	Azimuth (°)	Vertical Depth (usft)	+N/-S (usft)	+E/-W (usft)	Vertical Section (usft)	Dogleg Rate (°/100usft)	Build Rate (°/100usft)	Turn Rate (°/100usft)
0.00	0.00	0.00	0.00	0.00	0.00	0.00	0.00	0.00	0.00
100.00	0.00	0.00	100.00	0.00	0.00	0.00	0.00	0.00	0.00
200.00	0.00	0.00	200.00	0.00	0.00	0.00	0.00	0.00	0.00
300.00	0.00	0.00	300.00	0.00	0.00	0.00	0.00	0.00	0.00
400.00	0.00	0.00	400.00	0.00	0.00	0.00	0.00	0.00	0.00
500.00	0.00	0.00	500.00	0.00	0.00	0.00	0.00	0.00	0.00
600.00	0.00	0.00	600.00	0.00	0.00	0.00	0.00	0.00	0.00
700.00	0.00	0.00	700.00	0.00	0.00	0.00	0.00	0.00	0.00
800.00	0.00	0.00	800.00	0.00	0.00	0.00	0.00	0.00	0.00
Start Build 2.00									
900.00	0.00	0.00	900.00	0.00	0.00	0.00	0.00	0.00	0.00
1,000.00	2.00	207.61	999.98	-1.55	-0.81	-0.83	2.00	2.00	0.00
1,100.00	4.00	207.61	1,099.84	-6.18	-3.23	-3.31	2.00	2.00	0.00
1,200.00	6.00	207.61	1,199.45	-13.91	-7.27	-7.45	2.00	2.00	0.00
Start 3797.07 hold at 1212.65 MD									
1,212.65	6.25	207.61	1,212.03	-15.10	-7.90	-8.09	2.00	2.00	0.00
1,300.00	6.25	207.61	1,298.86	-23.53	-12.31	-12.60	0.00	0.00	0.00
1,400.00	6.25	207.61	1,398.27	-33.19	-17.36	-17.77	0.00	0.00	0.00
1,500.00	6.25	207.61	1,497.67	-42.84	-22.40	-22.94	0.00	0.00	0.00
1,600.00	6.25	207.61	1,597.08	-52.49	-27.45	-28.11	0.00	0.00	0.00
1,700.00	6.25	207.61	1,696.48	-62.14	-32.50	-33.28	0.00	0.00	0.00
1,800.00	6.25	207.61	1,795.89	-71.79	-37.55	-38.45	0.00	0.00	0.00
1,900.00	6.25	207.61	1,895.29	-81.44	-42.59	-43.61	0.00	0.00	0.00
2,000.00	6.25	207.61	1,994.70	-91.10	-47.64	-48.78	0.00	0.00	0.00
2,100.00	6.25	207.61	2,094.10	-100.75	-52.69	-53.95	0.00	0.00	0.00
2,200.00	6.25	207.61	2,193.51	-110.40	-57.74	-59.12	0.00	0.00	0.00
2,300.00	6.25	207.61	2,292.91	-120.05	-62.78	-64.29	0.00	0.00	0.00
2,400.00	6.25	207.61	2,392.32	-129.70	-67.83	-69.46	0.00	0.00	0.00
2,500.00	6.25	207.61	2,491.72	-139.35	-72.88	-74.62	0.00	0.00	0.00
2,600.00	6.25	207.61	2,591.13	-149.01	-77.93	-79.79	0.00	0.00	0.00
2,700.00	6.25	207.61	2,690.53	-158.66	-82.97	-84.96	0.00	0.00	0.00
2,800.00	6.25	207.61	2,789.94	-168.31	-88.02	-90.13	0.00	0.00	0.00
2,900.00	6.25	207.61	2,889.34	-177.96	-93.07	-95.30	0.00	0.00	0.00
3,000.00	6.25	207.61	2,988.75	-187.61	-98.12	-100.47	0.00	0.00	0.00
3,100.00	6.25	207.61	3,088.15	-197.27	-103.17	-105.64	0.00	0.00	0.00
3,200.00	6.25	207.61	3,187.56	-206.92	-108.21	-110.80	0.00	0.00	0.00
3,300.00	6.25	207.61	3,286.96	-216.57	-113.26	-115.97	0.00	0.00	0.00
3,400.00	6.25	207.61	3,386.37	-226.22	-118.31	-121.14	0.00	0.00	0.00
3,500.00	6.25	207.61	3,485.77	-235.87	-123.36	-126.31	0.00	0.00	0.00
3,600.00	6.25	207.61	3,585.18	-245.52	-128.40	-131.48	0.00	0.00	0.00
3,700.00	6.25	207.61	3,684.58	-255.18	-133.45	-136.65	0.00	0.00	0.00
3,800.00	6.25	207.61	3,783.99	-264.83	-138.50	-141.82	0.00	0.00	0.00
3,900.00	6.25	207.61	3,883.39	-274.48	-143.55	-146.98	0.00	0.00	0.00
4,000.00	6.25	207.61	3,982.80	-284.13	-148.59	-152.15	0.00	0.00	0.00
4,100.00	6.25	207.61	4,082.20	-293.78	-153.64	-157.32	0.00	0.00	0.00
4,200.00	6.25	207.61	4,181.61	-303.43	-158.69	-162.49	0.00	0.00	0.00
4,300.00	6.25	207.61	4,281.01	-313.09	-163.74	-167.66	0.00	0.00	0.00
4,400.00	6.25	207.61	4,380.42	-322.74	-168.78	-172.83	0.00	0.00	0.00
4,500.00	6.25	207.61	4,479.82	-332.39	-173.83	-178.00	0.00	0.00	0.00
4,600.00	6.25	207.61	4,579.23	-342.04	-178.88	-183.16	0.00	0.00	0.00
4,700.00	6.25	207.61	4,678.63	-351.69	-183.93	-188.33	0.00	0.00	0.00
Shannon									
4,713.46	6.25	207.61	4,692.01	-352.99	-184.61	-189.03	0.00	0.00	0.00

Database:	EDMDBBW	Local Co-ordinate Reference:	Well Anschutz Eq Farms 4-62-9-4956C2
Company:	Bill Barrett Corp.	TVD Reference:	Well @ 4542.00usft
Project:	Weld Co., CO	MD Reference:	Well @ 4542.00usft
Site:	Sec.9-T4N-R62W	North Reference:	True
Well:	Anschutz Eq Farms 4-62-9-4956C2	Survey Calculation Method:	Minimum Curvature
Wellbore:	Wellbore #1		
Design:	Design #1		

Planned Survey									
Measured Depth (usft)	Inclination (°)	Azimuth (°)	Vertical Depth (usft)	+N/-S (usft)	+E/-W (usft)	Vertical Section (usft)	Dogleg Rate (°/100usft)	Build Rate (°/100usft)	Turn Rate (°/100usft)
4,800.00	6.25	207.61	4,778.04	-361.35	-188.98	-193.50	0.00	0.00	0.00
4,900.00	6.25	207.61	4,877.44	-371.00	-194.02	-198.67	0.00	0.00	0.00
Start Drop -2.00									
5,009.72	6.25	207.61	4,986.51	-381.59	-199.56	-204.34	0.00	0.00	0.00
5,100.00	4.45	207.61	5,076.39	-389.05	-203.46	-208.34	2.00	-2.00	0.00
5,200.00	2.45	207.61	5,176.21	-394.37	-206.25	-211.19	2.00	-2.00	0.00
5,300.00	0.45	207.61	5,276.17	-396.61	-207.42	-212.39	2.00	-2.00	0.00
Start 500.02 hold at 5322.37 MD									
5,322.37	0.00	0.00	5,298.54	-396.69	-207.46	-212.43	2.00	-2.00	0.00
5,400.00	0.00	0.00	5,376.17	-396.69	-207.46	-212.43	0.00	0.00	0.00
5,500.00	0.00	0.00	5,476.17	-396.69	-207.46	-212.43	0.00	0.00	0.00
5,600.00	0.00	0.00	5,576.17	-396.69	-207.46	-212.43	0.00	0.00	0.00
5,700.00	0.00	0.00	5,676.17	-396.69	-207.46	-212.43	0.00	0.00	0.00
5,800.00	0.00	0.00	5,776.17	-396.69	-207.46	-212.43	0.00	0.00	0.00
Start Build 12.00									
5,822.39	0.00	0.00	5,798.56	-396.69	-207.46	-212.43	0.00	0.00	0.00
5,825.00	0.31	89.28	5,801.17	-396.69	-207.45	-212.42	12.00	12.00	0.00
5,850.00	3.31	89.28	5,826.15	-396.68	-206.66	-211.63	12.00	12.00	0.00
5,875.00	6.31	89.28	5,851.06	-396.65	-204.56	-209.53	12.00	12.00	0.00
5,900.00	9.31	89.28	5,875.83	-396.61	-201.17	-206.13	12.00	12.00	0.00
5,925.00	12.31	89.28	5,900.38	-396.55	-196.48	-201.45	12.00	12.00	0.00
5,950.00	15.31	89.28	5,924.66	-396.48	-190.51	-195.48	12.00	12.00	0.00
5,975.00	18.31	89.28	5,948.58	-396.39	-183.28	-188.25	12.00	12.00	0.00
Sharon Springs									
5,991.28	20.27	89.28	5,963.95	-396.32	-177.90	-182.87	12.00	12.00	0.00
6,000.00	21.31	89.28	5,972.10	-396.28	-174.81	-179.77	12.00	12.00	0.00
6,025.00	24.31	89.28	5,995.14	-396.16	-165.12	-170.08	12.00	12.00	0.00
6,050.00	27.31	89.28	6,017.65	-396.02	-154.23	-159.20	12.00	12.00	0.00
6,075.00	30.31	89.28	6,039.55	-395.87	-142.19	-147.15	12.00	12.00	0.00
6,100.00	33.31	89.28	6,060.79	-395.71	-129.01	-133.97	12.00	12.00	0.00
Niobrara									
6,103.14	33.69	89.28	6,063.41	-395.69	-127.28	-132.24	12.00	12.00	0.00
6,125.00	36.31	89.28	6,081.31	-395.53	-114.74	-119.70	12.00	12.00	0.00
6,150.00	39.31	89.28	6,101.06	-395.34	-99.42	-104.38	12.00	12.00	0.00
A Chalk									
6,160.41	40.56	89.28	6,109.04	-395.25	-92.74	-97.70	12.00	12.00	0.00
6,175.00	42.31	89.28	6,119.98	-395.13	-83.08	-88.04	12.00	12.00	0.00
6,200.00	45.31	89.28	6,138.02	-394.92	-65.78	-70.73	12.00	12.00	0.00
6,225.00	48.31	89.28	6,155.13	-394.69	-47.55	-52.51	12.00	12.00	0.00
6,250.00	51.31	89.28	6,171.26	-394.45	-28.46	-33.41	12.00	12.00	0.00
B Chalk									
6,253.33	51.71	89.28	6,173.33	-394.42	-25.85	-30.80	12.00	12.00	0.00
6,275.00	54.31	89.28	6,186.36	-394.20	-8.54	-13.50	12.00	12.00	0.00
6,300.00	57.31	89.28	6,200.41	-393.94	12.13	7.18	12.00	12.00	0.00
6,325.00	60.31	89.28	6,213.35	-393.67	33.52	28.57	12.00	12.00	0.00
6,350.00	63.31	89.28	6,225.16	-393.40	55.55	50.60	12.00	12.00	0.00
6,375.00	66.31	89.28	6,235.80	-393.11	78.17	73.22	12.00	12.00	0.00
6,400.00	69.31	89.28	6,245.24	-392.82	101.31	96.37	12.00	12.00	0.00
Top C Target									
6,416.52	71.30	89.28	6,250.81	-392.63	116.86	111.92	12.00	12.00	0.00
6,425.00	72.31	89.28	6,253.46	-392.53	124.92	119.98	12.00	12.00	0.00
6,450.00	75.31	89.28	6,260.42	-392.23	148.92	143.98	12.00	12.00	0.00
6,475.00	78.31	89.28	6,266.13	-391.92	173.26	168.32	12.00	12.00	0.00

Database:	EDMDBBW	Local Co-ordinate Reference:	Well Anschutz Eq Farms 4-62-9-4956C2
Company:	Bill Barrett Corp.	TVD Reference:	Well @ 4542.00usft
Project:	Weld Co., CO	MD Reference:	Well @ 4542.00usft
Site:	Sec.9-T4N-R62W	North Reference:	True
Well:	Anschutz Eq Farms 4-62-9-4956C2	Survey Calculation Method:	Minimum Curvature
Wellbore:	Wellbore #1		
Design:	Design #1		

Planned Survey									
Measured Depth (usft)	Inclination (°)	Azimuth (°)	Vertical Depth (usft)	+N/-S (usft)	+E/-W (usft)	Vertical Section (usft)	Dogleg Rate (°/100usft)	Build Rate (°/100usft)	Turn Rate (°/100usft)
6,500.00	81.31	89.28	6,270.55	-391.62	197.86	192.92	12.00	12.00	0.00
6,525.00	84.31	89.28	6,273.67	-391.30	222.66	217.72	12.00	12.00	0.00
6,550.00	87.31	89.28	6,275.50	-390.99	247.59	242.65	12.00	12.00	0.00
Start 9355.94 hold at 6577.49 MD - 7" Csg.									
6,577.49	90.61	89.28	6,276.00	-390.65	275.07	270.14	12.00	12.00	0.00
6,600.00	90.61	89.28	6,275.76	-390.37	297.57	292.64	0.00	0.00	0.00
6,700.00	90.61	89.28	6,274.69	-389.11	397.56	392.64	0.00	0.00	0.00
6,800.00	90.61	89.28	6,273.62	-387.86	497.55	492.63	0.00	0.00	0.00
6,900.00	90.61	89.28	6,272.55	-386.61	597.53	592.63	0.00	0.00	0.00
7,000.00	90.61	89.28	6,271.48	-385.36	697.52	692.62	0.00	0.00	0.00
7,100.00	90.61	89.28	6,270.41	-384.11	797.51	792.62	0.00	0.00	0.00
7,200.00	90.61	89.28	6,269.34	-382.86	897.49	892.61	0.00	0.00	0.00
7,300.00	90.61	89.28	6,268.28	-381.60	997.48	992.60	0.00	0.00	0.00
7,400.00	90.61	89.28	6,267.21	-380.35	1,097.46	1,092.60	0.00	0.00	0.00
7,500.00	90.61	89.28	6,266.14	-379.10	1,197.45	1,192.59	0.00	0.00	0.00
7,600.00	90.61	89.28	6,265.07	-377.85	1,297.44	1,292.59	0.00	0.00	0.00
7,700.00	90.61	89.28	6,264.00	-376.60	1,397.42	1,392.58	0.00	0.00	0.00
7,800.00	90.61	89.28	6,262.93	-375.34	1,497.41	1,492.58	0.00	0.00	0.00
7,900.00	90.61	89.28	6,261.86	-374.09	1,597.40	1,592.57	0.00	0.00	0.00
8,000.00	90.61	89.28	6,260.79	-372.84	1,697.38	1,692.56	0.00	0.00	0.00
8,100.00	90.61	89.28	6,259.72	-371.59	1,797.37	1,792.56	0.00	0.00	0.00
8,200.00	90.61	89.28	6,258.66	-370.34	1,897.36	1,892.55	0.00	0.00	0.00
8,300.00	90.61	89.28	6,257.59	-369.08	1,997.34	1,992.55	0.00	0.00	0.00
8,400.00	90.61	89.28	6,256.52	-367.83	2,097.33	2,092.54	0.00	0.00	0.00
8,500.00	90.61	89.28	6,255.45	-366.58	2,197.32	2,192.54	0.00	0.00	0.00
8,600.00	90.61	89.28	6,254.38	-365.33	2,297.30	2,292.53	0.00	0.00	0.00
8,700.00	90.61	89.28	6,253.31	-364.08	2,397.29	2,392.52	0.00	0.00	0.00
8,800.00	90.61	89.28	6,252.24	-362.82	2,497.27	2,492.52	0.00	0.00	0.00
8,900.00	90.61	89.28	6,251.17	-361.57	2,597.26	2,592.51	0.00	0.00	0.00
9,000.00	90.61	89.28	6,250.11	-360.32	2,697.25	2,692.51	0.00	0.00	0.00
9,100.00	90.61	89.28	6,249.04	-359.07	2,797.23	2,792.50	0.00	0.00	0.00
9,200.00	90.61	89.28	6,247.97	-357.82	2,897.22	2,892.50	0.00	0.00	0.00
9,300.00	90.61	89.28	6,246.90	-356.57	2,997.21	2,992.49	0.00	0.00	0.00
9,400.00	90.61	89.28	6,245.83	-355.31	3,097.19	3,092.48	0.00	0.00	0.00
9,500.00	90.61	89.28	6,244.76	-354.06	3,197.18	3,192.48	0.00	0.00	0.00
9,600.00	90.61	89.28	6,243.69	-352.81	3,297.17	3,292.47	0.00	0.00	0.00
9,700.00	90.61	89.28	6,242.62	-351.56	3,397.15	3,392.47	0.00	0.00	0.00
9,800.00	90.61	89.28	6,241.55	-350.31	3,497.14	3,492.46	0.00	0.00	0.00
9,900.00	90.61	89.28	6,240.49	-349.05	3,597.13	3,592.46	0.00	0.00	0.00
10,000.00	90.61	89.28	6,239.42	-347.80	3,697.11	3,692.45	0.00	0.00	0.00
10,100.00	90.61	89.28	6,238.35	-346.55	3,797.10	3,792.44	0.00	0.00	0.00
10,200.00	90.61	89.28	6,237.28	-345.30	3,897.08	3,892.44	0.00	0.00	0.00
10,300.00	90.61	89.28	6,236.21	-344.05	3,997.07	3,992.43	0.00	0.00	0.00
10,400.00	90.61	89.28	6,235.14	-342.79	4,097.06	4,092.43	0.00	0.00	0.00
10,500.00	90.61	89.28	6,234.07	-341.54	4,197.04	4,192.42	0.00	0.00	0.00
10,600.00	90.61	89.28	6,233.00	-340.29	4,297.03	4,292.42	0.00	0.00	0.00
10,700.00	90.61	89.28	6,231.94	-339.04	4,397.02	4,392.41	0.00	0.00	0.00
10,800.00	90.61	89.28	6,230.87	-337.79	4,497.00	4,492.40	0.00	0.00	0.00
10,900.00	90.61	89.28	6,229.80	-336.53	4,596.99	4,592.40	0.00	0.00	0.00
11,000.00	90.61	89.28	6,228.73	-335.28	4,696.98	4,692.39	0.00	0.00	0.00
11,100.00	90.61	89.28	6,227.66	-334.03	4,796.96	4,792.39	0.00	0.00	0.00
11,200.00	90.61	89.28	6,226.59	-332.78	4,896.95	4,892.38	0.00	0.00	0.00
11,300.00	90.61	89.28	6,225.52	-331.53	4,996.94	4,992.38	0.00	0.00	0.00
11,400.00	90.61	89.28	6,224.45	-330.27	5,096.92	5,092.37	0.00	0.00	0.00

Database:	EDMDBBW	Local Co-ordinate Reference:	Well Anschutz Eq Farms 4-62-9-4956C2
Company:	Bill Barrett Corp.	TVD Reference:	Well @ 4542.00usft
Project:	Weld Co., CO	MD Reference:	Well @ 4542.00usft
Site:	Sec.9-T4N-R62W	North Reference:	True
Well:	Anschutz Eq Farms 4-62-9-4956C2	Survey Calculation Method:	Minimum Curvature
Wellbore:	Wellbore #1		
Design:	Design #1		

Planned Survey									
Measured Depth (usft)	Inclination (°)	Azimuth (°)	Vertical Depth (usft)	+N/-S (usft)	+E/-W (usft)	Vertical Section (usft)	Dogleg Rate (°/100usft)	Build Rate (°/100usft)	Turn Rate (°/100usft)
11,500.00	90.61	89.28	6,223.38	-329.02	5,196.91	5,192.36	0.00	0.00	0.00
11,600.00	90.61	89.28	6,222.32	-327.77	5,296.90	5,292.36	0.00	0.00	0.00
11,700.00	90.61	89.28	6,221.25	-326.52	5,396.88	5,392.35	0.00	0.00	0.00
11,800.00	90.61	89.28	6,220.18	-325.27	5,496.87	5,492.35	0.00	0.00	0.00
11,900.00	90.61	89.28	6,219.11	-324.02	5,596.85	5,592.34	0.00	0.00	0.00
12,000.00	90.61	89.28	6,218.04	-322.76	5,696.84	5,692.34	0.00	0.00	0.00
12,100.00	90.61	89.28	6,216.97	-321.51	5,796.83	5,792.33	0.00	0.00	0.00
12,200.00	90.61	89.28	6,215.90	-320.26	5,896.81	5,892.32	0.00	0.00	0.00
12,300.00	90.61	89.28	6,214.83	-319.01	5,996.80	5,992.32	0.00	0.00	0.00
12,400.00	90.61	89.28	6,213.77	-317.76	6,096.79	6,092.31	0.00	0.00	0.00
12,500.00	90.61	89.28	6,212.70	-316.50	6,196.77	6,192.31	0.00	0.00	0.00
12,600.00	90.61	89.28	6,211.63	-315.25	6,296.76	6,292.30	0.00	0.00	0.00
12,700.00	90.61	89.28	6,210.56	-314.00	6,396.75	6,392.30	0.00	0.00	0.00
12,800.00	90.61	89.28	6,209.49	-312.75	6,496.73	6,492.29	0.00	0.00	0.00
12,900.00	90.61	89.28	6,208.42	-311.50	6,596.72	6,592.28	0.00	0.00	0.00
13,000.00	90.61	89.28	6,207.35	-310.24	6,696.71	6,692.28	0.00	0.00	0.00
13,100.00	90.61	89.28	6,206.28	-308.99	6,796.69	6,792.27	0.00	0.00	0.00
13,200.00	90.61	89.28	6,205.21	-307.74	6,896.68	6,892.27	0.00	0.00	0.00
13,300.00	90.61	89.28	6,204.15	-306.49	6,996.66	6,992.26	0.00	0.00	0.00
13,400.00	90.61	89.28	6,203.08	-305.24	7,096.65	7,092.26	0.00	0.00	0.00
13,500.00	90.61	89.28	6,202.01	-303.98	7,196.64	7,192.25	0.00	0.00	0.00
13,600.00	90.61	89.28	6,200.94	-302.73	7,296.62	7,292.24	0.00	0.00	0.00
13,700.00	90.61	89.28	6,199.87	-301.48	7,396.61	7,392.24	0.00	0.00	0.00
13,800.00	90.61	89.28	6,198.80	-300.23	7,496.60	7,492.23	0.00	0.00	0.00
13,900.00	90.61	89.28	6,197.73	-298.98	7,596.58	7,592.23	0.00	0.00	0.00
14,000.00	90.61	89.28	6,196.66	-297.73	7,696.57	7,692.22	0.00	0.00	0.00
14,100.00	90.61	89.28	6,195.60	-296.47	7,796.56	7,792.22	0.00	0.00	0.00
14,200.00	90.61	89.28	6,194.53	-295.22	7,896.54	7,892.21	0.00	0.00	0.00
14,300.00	90.61	89.28	6,193.46	-293.97	7,996.53	7,992.20	0.00	0.00	0.00
14,400.00	90.61	89.28	6,192.39	-292.72	8,096.52	8,092.20	0.00	0.00	0.00
14,500.00	90.61	89.28	6,191.32	-291.47	8,196.50	8,192.19	0.00	0.00	0.00
14,600.00	90.61	89.28	6,190.25	-290.21	8,296.49	8,292.19	0.00	0.00	0.00
14,700.00	90.61	89.28	6,189.18	-288.96	8,396.48	8,392.18	0.00	0.00	0.00
14,800.00	90.61	89.28	6,188.11	-287.71	8,496.46	8,492.18	0.00	0.00	0.00
14,900.00	90.61	89.28	6,187.05	-286.46	8,596.45	8,592.17	0.00	0.00	0.00
15,000.00	90.61	89.28	6,185.98	-285.21	8,696.43	8,692.16	0.00	0.00	0.00
15,100.00	90.61	89.28	6,184.91	-283.95	8,796.42	8,792.16	0.00	0.00	0.00
15,200.00	90.61	89.28	6,183.84	-282.70	8,896.41	8,892.15	0.00	0.00	0.00
15,300.00	90.61	89.28	6,182.77	-281.45	8,996.39	8,992.15	0.00	0.00	0.00
15,400.00	90.61	89.28	6,181.70	-280.20	9,096.38	9,092.14	0.00	0.00	0.00
15,500.00	90.61	89.28	6,180.63	-278.95	9,196.37	9,192.14	0.00	0.00	0.00
15,600.00	90.61	89.28	6,179.56	-277.69	9,296.35	9,292.13	0.00	0.00	0.00
15,700.00	90.61	89.28	6,178.49	-276.44	9,396.34	9,392.12	0.00	0.00	0.00
15,800.00	90.61	89.28	6,177.43	-275.19	9,496.33	9,492.12	0.00	0.00	0.00
15,900.00	90.61	89.28	6,176.36	-273.94	9,596.31	9,592.11	0.00	0.00	0.00
TD at 15933.43									
15,933.43	90.61	89.28	6,176.00	-273.52	9,629.74	9,625.55	0.00	0.00	0.00

Database:	EDMDBBW	Local Co-ordinate Reference:	Well Anschutz Eq Farms 4-62-9-4956C2
Company:	Bill Barrett Corp.	TVD Reference:	Well @ 4542.00usft
Project:	Weld Co., CO	MD Reference:	Well @ 4542.00usft
Site:	Sec.9-T4N-R62W	North Reference:	True
Well:	Anschutz Eq Farms 4-62-9-4956C2	Survey Calculation Method:	Minimum Curvature
Wellbore:	Wellbore #1		
Design:	Design #1		

Design Targets									
Target Name	Dip Angle	Dip Dir.	TVD	+N/-S	+E/-W	Northing	Easting	Latitude	Longitude
- hit/miss target	(°)	(°)	(usft)	(usft)	(usft)	(usft)	(usft)		
- Shape									
Anschutz eq Farms 4-62	0.00	0.00	6,176.00	-273.52	9,629.74	1,362,284.917	3,333,542.712	40° 19' 18.109 N	104° 18' 13.500 W
- plan hits target center									
- Point									

Casing Points				
Measured Depth	Vertical Depth	Name	Casing Diameter	Hole Diameter
(usft)	(usft)		(")	(")
6,577.49	6,276.00	7" Csg.	7	8-3/4

Formations					
Measured Depth	Vertical Depth	Name	Lithology	Dip	Dip Direction
(usft)	(usft)			(°)	(°)
4,713.46	4,690.00	Shannon		-0.61	89.28
5,991.28	5,962.00	Sharon Springs		-0.61	89.28
6,103.14	6,062.00	Niobrara		-0.61	89.28
6,160.41	6,108.00	A Chalk		-0.61	89.28
6,253.33	6,173.00	B Chalk		-0.61	89.28
6,416.52	6,252.00	Top C Target		-0.61	89.28

Plan Annotations				
Measured Depth	Vertical Depth	Local Coordinates		Comment
(usft)	(usft)	+N/-S (usft)	+E/-W (usft)	
900.00	900.00	0.00	0.00	Start Build 2.00
1,212.65	1,212.03	-15.10	-7.90	Start 3797.07 hold at 1212.65 MD
5,009.72	4,986.51	-381.59	-199.56	Start Drop -2.00
5,322.37	5,298.54	-396.69	-207.46	Start 500.02 hold at 5322.37 MD
5,822.39	5,798.56	-396.69	-207.46	Start Build 12.00
6,577.49	6,276.00	-390.65	275.07	Start 9355.94 hold at 6577.49 MD
15,933.43	6,176.00	-273.52	9,629.74	TD at 15933.43