



Bill Barrett Corporation

Bill Barrett Corp.

Weld Co., CO

Sec.9-T4N-R62W

Anschutz Eq Farms 4-62-9-3340C2

Wellbore #1

Plan: Design #1

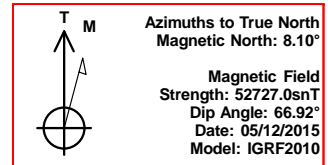
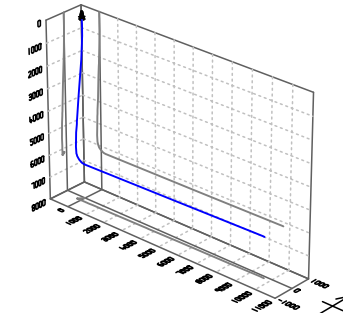
Standard Planning Report

12 May, 2015



Bill Barrett Corp.
Project: Weld Co., CO
Site: Sec.9-T4N-R62W
Well: Anschutz Eq Farms 4-62-9-3340C2
Wellbore: Wellbore #1
Design: Design #1
Lat: 40° 19' 32.779 N
Long: 104° 20' 18.640 W
Pad GL: 4528.00
KB: Well @ 4544.00usft

Archer



SECTION DETAILS

MD	Inc	Azi	TVD	+N/-S	+E/-W	Dleg	TFace	VSec	Annotation
0.00	0.00	0.00	0.00	0.00	0.00	0.00	0.00	0.00	
900.00	0.00	0.00	900.00	0.00	0.00	0.00	0.00	0.00	Start Build 2.00
1123.54	4.47	221.01	1123.32	-6.58	-5.72	2.00	221.01	-5.80	Start 3966.98 hold at 1123.54 MD
5090.52	4.47	221.01	5078.22	-239.94	-208.62	0.00	0.00	-211.62	Start Drop -2.00
5314.06	0.00	0.00	5301.54	-246.52	-214.34	2.00	180.00	-217.42	Start 500.03 hold at 5314.06 MD
5814.09	0.00	0.00	5801.57	-246.52	-214.34	0.00	0.00	-217.42	Start Build 12.00
6569.16	90.61	89.28	6279.00	-240.47	268.16	12.00	89.28	265.11	Start 9417.26 hold at 6569.16 MD
15986.42	90.61	89.28	6179.00	-122.32	9684.14	0.00	0.00	9681.84	TD at 15986.42

WELL DETAILS: Anschutz Eq Farms 4-62-9-3340C2

+N/-S	+E/-W	Northing	Ground Level: Easting	4528.00 Latitude	Longitude	Slot
0.00	0.00	1363640.417	3323831.644	40° 19' 32.779 N	104° 20' 18.640 W	

PROJECT DETAILS: Weld Co., CO

Geodetic System: US State Plane 1983
Datum: North American Datum 1983
Ellipsoid: GRS 1980
Zone: Colorado Northern Zone

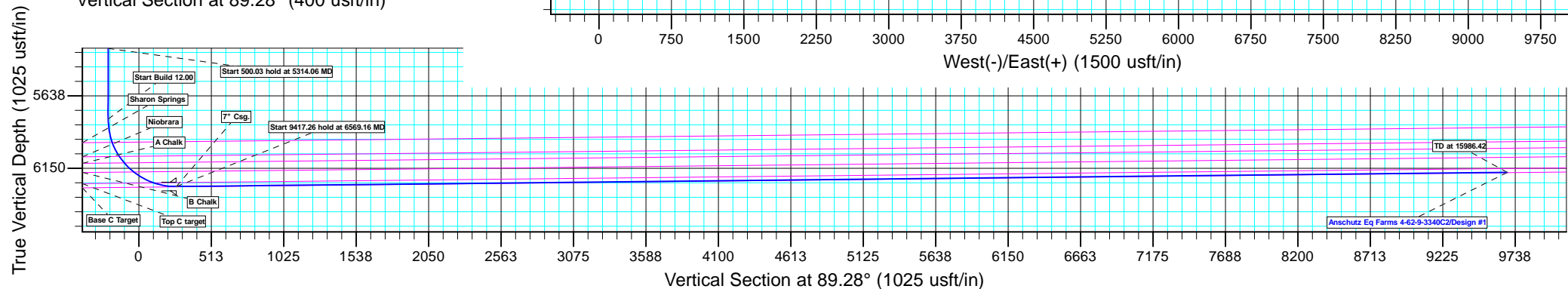
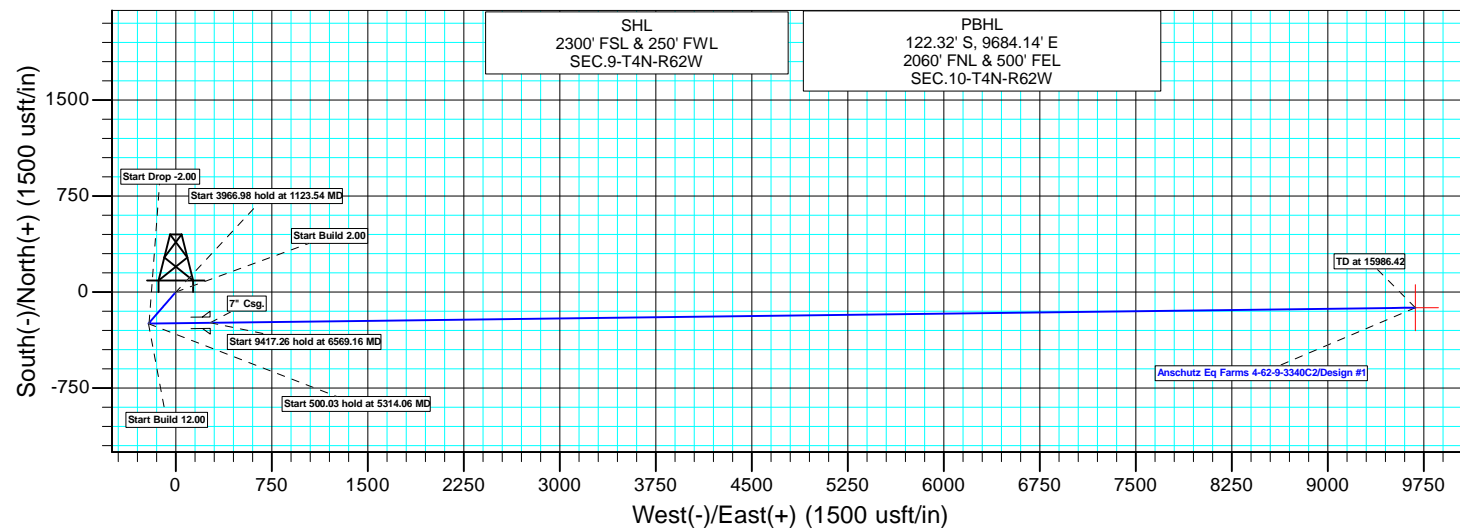
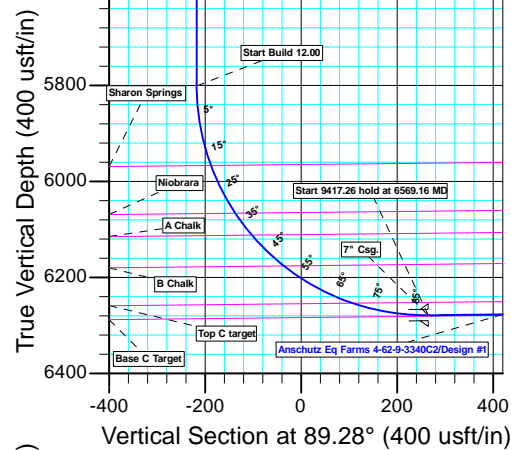
System Datum: Mean Sea Level

CASING DETAILS

TVD	MD	Name
6279.00	6569.16	7" Csg.

WELLBORE TARGET DETAILS (LAT/LONG)

Name	TVD	+N/-S	+E/-W	Latitude	Longitude	Shape
Anschutz Eq Farms 4-62-9-3340C2 tgt	6179.00	-122.32	9684.14	40° 19' 31.552 N	104° 18' 13.601 W	Point



Plan: Design #1 (Anschutz Eq Farms 4-62-9-3340C2/Wellbore #1)

Created By: Ricky Osburn Date: 14:48, May 12 2015

Database:	EDMDBBW	Local Co-ordinate Reference:	Well Anschutz Eq Farms 4-62-9-3340C2
Company:	Bill Barrett Corp.	TVD Reference:	Well @ 4544.00usft
Project:	Weld Co., CO	MD Reference:	Well @ 4544.00usft
Site:	Sec.9-T4N-R62W	North Reference:	True
Well:	Anschutz Eq Farms 4-62-9-3340C2	Survey Calculation Method:	Minimum Curvature
Wellbore:	Wellbore #1		
Design:	Design #1		

Project	Weld Co., CO		
Map System:	US State Plane 1983	System Datum:	Mean Sea Level
Geo Datum:	North American Datum 1983		
Map Zone:	Colorado Northern Zone		

Site		Sec.9-T4N-R62W			
Site Position:		Northing:	1,361,884.480 usft	Latitude:	40° 19' 15.341 N
From:	Lat/Long	Easting:	3,324,505.224 usft	Longitude:	104° 20' 10.241 W
Position Uncertainty:	0.00 usft	Slot Radius:	13-3/16 "	Grid Convergence:	0.75 °

Well	Anschutz Eq Farms 4-62-9-3340C2					
Well Position	+N/-S	1,764.63 usft	Northing:	1,363,640.417 usft	Latitude:	40° 19' 32.779 N
	+E/-W	-650.48 usft	Easting:	3,323,831.644 usft	Longitude:	104° 20' 18.640 W
Position Uncertainty		0.00 usft	Wellhead Elevation:	0.00 usft	Ground Level:	4,528.00 usft

Wellbore	Wellbore #1				
Magnetics	Model Name	Sample Date	Declination (°)	Dip Angle (°)	Field Strength (nT)
	IGRF2010	2015/05/12	8.10	66.92	52,727

Design	Design #1			
Audit Notes:				
Version:	Phase:	PLAN	Tie On Depth:	0.00
Vertical Section:	Depth From (TVD) (usft)	+N/-S (usft)	+E/-W (usft)	Direction (°)
	0.00	0.00	0.00	89.28

Plan Sections										
Measured Depth (usft)	Inclination (°)	Azimuth (°)	Vertical Depth (usft)	+N/-S (usft)	+E/-W (usft)	Dogleg Rate (°/100usft)	Build Rate (°/100usft)	Turn Rate (°/100usft)	TFO (°)	Target
0.00	0.00	0.00	0.00	0.00	0.00	0.00	0.00	0.00	0.00	
900.00	0.00	0.00	900.00	0.00	0.00	0.00	0.00	0.00	0.00	
1,123.54	4.47	221.01	1,123.32	-6.58	-5.72	2.00	2.00	0.00	221.01	
5,090.52	4.47	221.01	5,078.22	-239.94	-208.62	0.00	0.00	0.00	0.00	
5,314.06	0.00	0.00	5,301.54	-246.52	-214.34	2.00	-2.00	0.00	180.00	
5,814.09	0.00	0.00	5,801.57	-246.52	-214.34	0.00	0.00	0.00	0.00	
6,569.16	90.61	89.28	6,279.00	-240.47	268.16	12.00	12.00	0.00	89.28	Anschutz Eq Farms 4
15,986.42	90.61	89.28	6,179.00	-122.32	9,684.14	0.00	0.00	0.00	0.00	Anschutz Eq Farms 4

Database:	EDMDBBW	Local Co-ordinate Reference:	Well Anschutz Eq Farms 4-62-9-3340C2
Company:	Bill Barrett Corp.	TVD Reference:	Well @ 4544.00usft
Project:	Weld Co., CO	MD Reference:	Well @ 4544.00usft
Site:	Sec.9-T4N-R62W	North Reference:	True
Well:	Anschutz Eq Farms 4-62-9-3340C2	Survey Calculation Method:	Minimum Curvature
Wellbore:	Wellbore #1		
Design:	Design #1		

Planned Survey									
Measured Depth (usft)	Inclination (°)	Azimuth (°)	Vertical Depth (usft)	+N/-S (usft)	+E/-W (usft)	Vertical Section (usft)	Dogleg Rate (°/100usft)	Build Rate (°/100usft)	Turn Rate (°/100usft)
0.00	0.00	0.00	0.00	0.00	0.00	0.00	0.00	0.00	0.00
100.00	0.00	0.00	100.00	0.00	0.00	0.00	0.00	0.00	0.00
200.00	0.00	0.00	200.00	0.00	0.00	0.00	0.00	0.00	0.00
300.00	0.00	0.00	300.00	0.00	0.00	0.00	0.00	0.00	0.00
400.00	0.00	0.00	400.00	0.00	0.00	0.00	0.00	0.00	0.00
500.00	0.00	0.00	500.00	0.00	0.00	0.00	0.00	0.00	0.00
600.00	0.00	0.00	600.00	0.00	0.00	0.00	0.00	0.00	0.00
700.00	0.00	0.00	700.00	0.00	0.00	0.00	0.00	0.00	0.00
800.00	0.00	0.00	800.00	0.00	0.00	0.00	0.00	0.00	0.00
Start Build 2.00									
900.00	0.00	0.00	900.00	0.00	0.00	0.00	0.00	0.00	0.00
1,000.00	2.00	221.01	999.98	-1.32	-1.15	-1.16	2.00	2.00	0.00
1,100.00	4.00	221.01	1,099.84	-5.27	-4.58	-4.64	2.00	2.00	0.00
Start 3966.98 hold at 1123.54 MD									
1,123.54	4.47	221.01	1,123.32	-6.58	-5.72	-5.80	2.00	2.00	0.00
1,200.00	4.47	221.01	1,199.54	-11.08	-9.63	-9.77	0.00	0.00	0.00
1,300.00	4.47	221.01	1,299.24	-16.96	-14.75	-14.96	0.00	0.00	0.00
1,400.00	4.47	221.01	1,398.93	-22.84	-19.86	-20.15	0.00	0.00	0.00
1,500.00	4.47	221.01	1,498.63	-28.72	-24.97	-25.33	0.00	0.00	0.00
1,600.00	4.47	221.01	1,598.32	-34.61	-30.09	-30.52	0.00	0.00	0.00
1,700.00	4.47	221.01	1,698.02	-40.49	-35.20	-35.71	0.00	0.00	0.00
1,800.00	4.47	221.01	1,797.71	-46.37	-40.32	-40.90	0.00	0.00	0.00
1,900.00	4.47	221.01	1,897.41	-52.25	-45.43	-46.09	0.00	0.00	0.00
2,000.00	4.47	221.01	1,997.11	-58.14	-50.55	-51.27	0.00	0.00	0.00
2,100.00	4.47	221.01	2,096.80	-64.02	-55.66	-56.46	0.00	0.00	0.00
2,200.00	4.47	221.01	2,196.50	-69.90	-60.78	-61.65	0.00	0.00	0.00
2,300.00	4.47	221.01	2,296.19	-75.79	-65.89	-66.84	0.00	0.00	0.00
2,400.00	4.47	221.01	2,395.89	-81.67	-71.01	-72.03	0.00	0.00	0.00
2,500.00	4.47	221.01	2,495.58	-87.55	-76.12	-77.22	0.00	0.00	0.00
2,600.00	4.47	221.01	2,595.28	-93.43	-81.24	-82.40	0.00	0.00	0.00
2,700.00	4.47	221.01	2,694.98	-99.32	-86.35	-87.59	0.00	0.00	0.00
2,800.00	4.47	221.01	2,794.67	-105.20	-91.47	-92.78	0.00	0.00	0.00
2,900.00	4.47	221.01	2,894.37	-111.08	-96.58	-97.97	0.00	0.00	0.00
3,000.00	4.47	221.01	2,994.06	-116.96	-101.70	-103.16	0.00	0.00	0.00
3,100.00	4.47	221.01	3,093.76	-122.85	-106.81	-108.35	0.00	0.00	0.00
3,200.00	4.47	221.01	3,193.45	-128.73	-111.93	-113.53	0.00	0.00	0.00
3,300.00	4.47	221.01	3,293.15	-134.61	-117.04	-118.72	0.00	0.00	0.00
3,400.00	4.47	221.01	3,392.85	-140.49	-122.15	-123.91	0.00	0.00	0.00
3,500.00	4.47	221.01	3,492.54	-146.38	-127.27	-129.10	0.00	0.00	0.00
3,600.00	4.47	221.01	3,592.24	-152.26	-132.38	-134.29	0.00	0.00	0.00
3,700.00	4.47	221.01	3,691.93	-158.14	-137.50	-139.48	0.00	0.00	0.00
3,800.00	4.47	221.01	3,791.63	-164.02	-142.61	-144.66	0.00	0.00	0.00
3,900.00	4.47	221.01	3,891.32	-169.91	-147.73	-149.85	0.00	0.00	0.00
4,000.00	4.47	221.01	3,991.02	-175.79	-152.84	-155.04	0.00	0.00	0.00
4,100.00	4.47	221.01	4,090.72	-181.67	-157.96	-160.23	0.00	0.00	0.00
4,200.00	4.47	221.01	4,190.41	-187.56	-163.07	-165.42	0.00	0.00	0.00
4,300.00	4.47	221.01	4,290.11	-193.44	-168.19	-170.60	0.00	0.00	0.00
4,400.00	4.47	221.01	4,389.80	-199.32	-173.30	-175.79	0.00	0.00	0.00
4,500.00	4.47	221.01	4,489.50	-205.20	-178.42	-180.98	0.00	0.00	0.00
4,600.00	4.47	221.01	4,589.19	-211.09	-183.53	-186.17	0.00	0.00	0.00
4,700.00	4.47	221.01	4,688.89	-216.97	-188.65	-191.36	0.00	0.00	0.00
Shannon									
4,705.17	4.47	221.01	4,694.04	-217.27	-188.91	-191.63	0.00	0.00	0.00

Database:	EDMDBBW	Local Co-ordinate Reference:	Well Anschutz Eq Farms 4-62-9-3340C2
Company:	Bill Barrett Corp.	TVD Reference:	Well @ 4544.00usft
Project:	Weld Co., CO	MD Reference:	Well @ 4544.00usft
Site:	Sec.9-T4N-R62W	North Reference:	True
Well:	Anschutz Eq Farms 4-62-9-3340C2	Survey Calculation Method:	Minimum Curvature
Wellbore:	Wellbore #1		
Design:	Design #1		

Planned Survey									
Measured Depth (usft)	Inclination (°)	Azimuth (°)	Vertical Depth (usft)	+N/-S (usft)	+E/-W (usft)	Vertical Section (usft)	Dogleg Rate (°/100usft)	Build Rate (°/100usft)	Turn Rate (°/100usft)
4,800.00	4.47	221.01	4,788.59	-222.85	-193.76	-196.55	0.00	0.00	0.00
4,900.00	4.47	221.01	4,888.28	-228.73	-198.88	-201.73	0.00	0.00	0.00
5,000.00	4.47	221.01	4,987.98	-234.62	-203.99	-206.92	0.00	0.00	0.00
Start Drop -2.00									
5,090.52	4.47	221.01	5,078.22	-239.94	-208.62	-211.62	0.00	0.00	0.00
5,100.00	4.28	221.01	5,087.67	-240.49	-209.09	-212.10	2.00	-2.00	0.00
5,200.00	2.28	221.01	5,187.51	-244.81	-212.85	-215.91	2.00	-2.00	0.00
5,300.00	0.28	221.01	5,287.48	-246.49	-214.32	-217.40	2.00	-2.00	0.00
Start 500.03 hold at 5314.06 MD									
5,314.06	0.00	0.00	5,301.54	-246.52	-214.34	-217.42	2.00	-2.00	0.00
5,400.00	0.00	0.00	5,387.48	-246.52	-214.34	-217.42	0.00	0.00	0.00
5,500.00	0.00	0.00	5,487.48	-246.52	-214.34	-217.42	0.00	0.00	0.00
5,600.00	0.00	0.00	5,587.48	-246.52	-214.34	-217.42	0.00	0.00	0.00
5,700.00	0.00	0.00	5,687.48	-246.52	-214.34	-217.42	0.00	0.00	0.00
5,800.00	0.00	0.00	5,787.48	-246.52	-214.34	-217.42	0.00	0.00	0.00
Start Build 12.00									
5,814.09	0.00	0.00	5,801.57	-246.52	-214.34	-217.42	0.00	0.00	0.00
5,825.00	1.31	89.28	5,812.47	-246.52	-214.22	-217.30	12.00	12.00	0.00
5,850.00	4.31	89.28	5,837.44	-246.50	-212.99	-216.07	12.00	12.00	0.00
5,875.00	7.31	89.28	5,862.31	-246.47	-210.46	-213.54	12.00	12.00	0.00
5,900.00	10.31	89.28	5,887.01	-246.42	-206.63	-209.71	12.00	12.00	0.00
5,925.00	13.31	89.28	5,911.48	-246.36	-201.52	-204.60	12.00	12.00	0.00
5,950.00	16.31	89.28	5,935.65	-246.28	-195.13	-198.21	12.00	12.00	0.00
5,975.00	19.31	89.28	5,959.45	-246.18	-187.48	-190.56	12.00	12.00	0.00
Sharon Springs									
5,983.03	20.27	89.28	5,967.00	-246.15	-184.77	-187.85	12.00	12.00	0.00
6,000.00	22.31	89.28	5,982.81	-246.07	-178.60	-181.68	12.00	12.00	0.00
6,025.00	25.31	89.28	6,005.68	-245.95	-168.51	-171.59	12.00	12.00	0.00
6,050.00	28.31	89.28	6,027.99	-245.80	-157.24	-160.32	12.00	12.00	0.00
6,075.00	31.31	89.28	6,049.68	-245.65	-144.82	-147.89	12.00	12.00	0.00
Niobrara									
6,094.90	33.70	89.28	6,066.46	-245.51	-134.13	-137.20	12.00	12.00	0.00
6,100.00	34.31	89.28	6,070.69	-245.48	-131.27	-134.35	12.00	12.00	0.00
6,125.00	37.31	89.28	6,090.96	-245.29	-116.65	-119.72	12.00	12.00	0.00
6,150.00	40.31	89.28	6,110.44	-245.10	-100.98	-104.05	12.00	12.00	0.00
A Chalk									
6,152.17	40.57	89.28	6,112.09	-245.08	-99.58	-102.65	12.00	12.00	0.00
6,175.00	43.31	89.28	6,129.08	-244.89	-84.32	-87.39	12.00	12.00	0.00
6,200.00	46.31	89.28	6,146.81	-244.67	-66.70	-69.77	12.00	12.00	0.00
6,225.00	49.31	89.28	6,163.60	-244.44	-48.19	-51.25	12.00	12.00	0.00
B Chalk									
6,245.10	51.72	89.28	6,176.38	-244.24	-32.67	-35.74	12.00	12.00	0.00
6,250.00	52.31	89.28	6,179.39	-244.19	-28.81	-31.88	12.00	12.00	0.00
6,275.00	55.31	89.28	6,194.15	-243.94	-8.64	-11.71	12.00	12.00	0.00
6,300.00	58.31	89.28	6,207.84	-243.68	12.28	9.21	12.00	12.00	0.00
6,325.00	61.31	89.28	6,220.41	-243.41	33.88	30.82	12.00	12.00	0.00
6,350.00	64.31	89.28	6,231.83	-243.13	56.11	53.05	12.00	12.00	0.00
6,375.00	67.31	89.28	6,242.08	-242.84	78.91	75.86	12.00	12.00	0.00
6,400.00	70.31	89.28	6,251.11	-242.55	102.22	99.16	12.00	12.00	0.00
Top C target									
6,408.36	71.31	89.28	6,253.86	-242.45	110.12	107.06	12.00	12.00	0.00
6,425.00	73.31	89.28	6,258.92	-242.25	125.97	122.91	12.00	12.00	0.00
6,450.00	76.31	89.28	6,265.47	-241.95	150.09	147.03	12.00	12.00	0.00

Database:	EDMDBBW	Local Co-ordinate Reference:	Well Anschutz Eq Farms 4-62-9-3340C2
Company:	Bill Barrett Corp.	TVD Reference:	Well @ 4544.00usft
Project:	Weld Co., CO	MD Reference:	Well @ 4544.00usft
Site:	Sec.9-T4N-R62W	North Reference:	True
Well:	Anschutz Eq Farms 4-62-9-3340C2	Survey Calculation Method:	Minimum Curvature
Wellbore:	Wellbore #1		
Design:	Design #1		

Planned Survey									
Measured Depth (usft)	Inclination (°)	Azimuth (°)	Vertical Depth (usft)	+N/-S (usft)	+E/-W (usft)	Vertical Section (usft)	Dogleg Rate (°/100usft)	Build Rate (°/100usft)	Turn Rate (°/100usft)
6,475.00	79.31	89.28	6,270.74	-241.64	174.52	171.47	12.00	12.00	0.00
6,500.00	82.31	89.28	6,274.74	-241.33	199.19	196.14	12.00	12.00	0.00
6,525.00	85.31	89.28	6,277.43	-241.02	224.04	221.00	12.00	12.00	0.00
6,550.00	88.31	89.28	6,278.82	-240.71	249.00	245.95	12.00	12.00	0.00
Start 9417.26 hold at 6569.16 MD - 7" Csg.									
6,569.16	90.61	89.28	6,279.00	-240.47	268.15	265.11	12.00	12.00	0.00
6,600.00	90.61	89.28	6,278.68	-240.08	298.99	295.95	0.00	0.00	0.00
6,700.00	90.61	89.28	6,277.62	-238.82	398.98	395.94	0.00	0.00	0.00
6,800.00	90.61	89.28	6,276.55	-237.57	498.96	495.94	0.00	0.00	0.00
6,900.00	90.61	89.28	6,275.49	-236.32	598.95	595.93	0.00	0.00	0.00
7,000.00	90.61	89.28	6,274.43	-235.06	698.94	695.93	0.00	0.00	0.00
7,100.00	90.61	89.28	6,273.37	-233.81	798.92	795.92	0.00	0.00	0.00
7,200.00	90.61	89.28	6,272.31	-232.55	898.91	895.92	0.00	0.00	0.00
7,300.00	90.61	89.28	6,271.24	-231.30	998.90	995.91	0.00	0.00	0.00
7,400.00	90.61	89.28	6,270.18	-230.04	1,098.88	1,095.91	0.00	0.00	0.00
7,500.00	90.61	89.28	6,269.12	-228.79	1,198.87	1,195.90	0.00	0.00	0.00
7,600.00	90.61	89.28	6,268.06	-227.53	1,298.86	1,295.89	0.00	0.00	0.00
7,700.00	90.61	89.28	6,267.00	-226.28	1,398.84	1,395.89	0.00	0.00	0.00
7,800.00	90.61	89.28	6,265.93	-225.02	1,498.83	1,495.88	0.00	0.00	0.00
7,900.00	90.61	89.28	6,264.87	-223.77	1,598.82	1,595.88	0.00	0.00	0.00
8,000.00	90.61	89.28	6,263.81	-222.51	1,698.80	1,695.87	0.00	0.00	0.00
8,100.00	90.61	89.28	6,262.75	-221.26	1,798.79	1,795.87	0.00	0.00	0.00
8,200.00	90.61	89.28	6,261.69	-220.01	1,898.77	1,895.86	0.00	0.00	0.00
8,300.00	90.61	89.28	6,260.62	-218.75	1,998.76	1,995.85	0.00	0.00	0.00
8,400.00	90.61	89.28	6,259.56	-217.50	2,098.75	2,095.85	0.00	0.00	0.00
8,500.00	90.61	89.28	6,258.50	-216.24	2,198.73	2,195.84	0.00	0.00	0.00
8,600.00	90.61	89.28	6,257.44	-214.99	2,298.72	2,295.84	0.00	0.00	0.00
8,700.00	90.61	89.28	6,256.38	-213.73	2,398.71	2,395.83	0.00	0.00	0.00
8,800.00	90.61	89.28	6,255.31	-212.48	2,498.69	2,495.83	0.00	0.00	0.00
8,900.00	90.61	89.28	6,254.25	-211.22	2,598.68	2,595.82	0.00	0.00	0.00
9,000.00	90.61	89.28	6,253.19	-209.97	2,698.67	2,695.81	0.00	0.00	0.00
9,100.00	90.61	89.28	6,252.13	-208.71	2,798.65	2,795.81	0.00	0.00	0.00
9,200.00	90.61	89.28	6,251.07	-207.46	2,898.64	2,895.80	0.00	0.00	0.00
9,300.00	90.61	89.28	6,250.00	-206.21	2,998.63	2,995.80	0.00	0.00	0.00
9,400.00	90.61	89.28	6,248.94	-204.95	3,098.61	3,095.79	0.00	0.00	0.00
9,500.00	90.61	89.28	6,247.88	-203.70	3,198.60	3,195.79	0.00	0.00	0.00
9,600.00	90.61	89.28	6,246.82	-202.44	3,298.59	3,295.78	0.00	0.00	0.00
9,700.00	90.61	89.28	6,245.76	-201.19	3,398.57	3,395.78	0.00	0.00	0.00
9,800.00	90.61	89.28	6,244.69	-199.93	3,498.56	3,495.77	0.00	0.00	0.00
9,900.00	90.61	89.28	6,243.63	-198.68	3,598.54	3,595.76	0.00	0.00	0.00
10,000.00	90.61	89.28	6,242.57	-197.42	3,698.53	3,695.76	0.00	0.00	0.00
10,100.00	90.61	89.28	6,241.51	-196.17	3,798.52	3,795.75	0.00	0.00	0.00
10,200.00	90.61	89.28	6,240.45	-194.91	3,898.50	3,895.75	0.00	0.00	0.00
10,300.00	90.61	89.28	6,239.38	-193.66	3,998.49	3,995.74	0.00	0.00	0.00
10,400.00	90.61	89.28	6,238.32	-192.40	4,098.48	4,095.74	0.00	0.00	0.00
10,500.00	90.61	89.28	6,237.26	-191.15	4,198.46	4,195.73	0.00	0.00	0.00
10,600.00	90.61	89.28	6,236.20	-189.90	4,298.45	4,295.72	0.00	0.00	0.00
10,700.00	90.61	89.28	6,235.14	-188.64	4,398.44	4,395.72	0.00	0.00	0.00
10,800.00	90.61	89.28	6,234.07	-187.39	4,498.42	4,495.71	0.00	0.00	0.00
10,900.00	90.61	89.28	6,233.01	-186.13	4,598.41	4,595.71	0.00	0.00	0.00
11,000.00	90.61	89.28	6,231.95	-184.88	4,698.40	4,695.70	0.00	0.00	0.00
11,100.00	90.61	89.28	6,230.89	-183.62	4,798.38	4,795.70	0.00	0.00	0.00
11,200.00	90.61	89.28	6,229.83	-182.37	4,898.37	4,895.69	0.00	0.00	0.00
11,300.00	90.61	89.28	6,228.76	-181.11	4,998.36	4,995.69	0.00	0.00	0.00

Database:	EDMDBBW	Local Co-ordinate Reference:	Well Anschutz Eq Farms 4-62-9-3340C2
Company:	Bill Barrett Corp.	TVD Reference:	Well @ 4544.00usft
Project:	Weld Co., CO	MD Reference:	Well @ 4544.00usft
Site:	Sec.9-T4N-R62W	North Reference:	True
Well:	Anschutz Eq Farms 4-62-9-3340C2	Survey Calculation Method:	Minimum Curvature
Wellbore:	Wellbore #1		
Design:	Design #1		

Planned Survey									
Measured Depth (usft)	Inclination (°)	Azimuth (°)	Vertical Depth (usft)	+N/-S (usft)	+E/-W (usft)	Vertical Section (usft)	Dogleg Rate (°/100usft)	Build Rate (°/100usft)	Turn Rate (°/100usft)
11,400.00	90.61	89.28	6,227.70	-179.86	5,098.34	5,095.68	0.00	0.00	0.00
11,500.00	90.61	89.28	6,226.64	-178.60	5,198.33	5,195.67	0.00	0.00	0.00
11,600.00	90.61	89.28	6,225.58	-177.35	5,298.32	5,295.67	0.00	0.00	0.00
11,700.00	90.61	89.28	6,224.52	-176.10	5,398.30	5,395.66	0.00	0.00	0.00
11,800.00	90.61	89.28	6,223.45	-174.84	5,498.29	5,495.66	0.00	0.00	0.00
11,900.00	90.61	89.28	6,222.39	-173.59	5,598.27	5,595.65	0.00	0.00	0.00
12,000.00	90.61	89.28	6,221.33	-172.33	5,698.26	5,695.65	0.00	0.00	0.00
12,100.00	90.61	89.28	6,220.27	-171.08	5,798.25	5,795.64	0.00	0.00	0.00
12,200.00	90.61	89.28	6,219.21	-169.82	5,898.23	5,895.63	0.00	0.00	0.00
12,300.00	90.61	89.28	6,218.14	-168.57	5,998.22	5,995.63	0.00	0.00	0.00
12,400.00	90.61	89.28	6,217.08	-167.31	6,098.21	6,095.62	0.00	0.00	0.00
12,500.00	90.61	89.28	6,216.02	-166.06	6,198.19	6,195.62	0.00	0.00	0.00
12,600.00	90.61	89.28	6,214.96	-164.80	6,298.18	6,295.61	0.00	0.00	0.00
12,700.00	90.61	89.28	6,213.90	-163.55	6,398.17	6,395.61	0.00	0.00	0.00
12,800.00	90.61	89.28	6,212.83	-162.29	6,498.15	6,495.60	0.00	0.00	0.00
12,900.00	90.61	89.28	6,211.77	-161.04	6,598.14	6,595.59	0.00	0.00	0.00
13,000.00	90.61	89.28	6,210.71	-159.79	6,698.13	6,695.59	0.00	0.00	0.00
13,100.00	90.61	89.28	6,209.65	-158.53	6,798.11	6,795.58	0.00	0.00	0.00
13,200.00	90.61	89.28	6,208.59	-157.28	6,898.10	6,895.58	0.00	0.00	0.00
13,300.00	90.61	89.28	6,207.52	-156.02	6,998.09	6,995.57	0.00	0.00	0.00
13,400.00	90.61	89.28	6,206.46	-154.77	7,098.07	7,095.57	0.00	0.00	0.00
13,500.00	90.61	89.28	6,205.40	-153.51	7,198.06	7,195.56	0.00	0.00	0.00
13,600.00	90.61	89.28	6,204.34	-152.26	7,298.04	7,295.56	0.00	0.00	0.00
13,700.00	90.61	89.28	6,203.28	-151.00	7,398.03	7,395.55	0.00	0.00	0.00
13,800.00	90.61	89.28	6,202.22	-149.75	7,498.02	7,495.54	0.00	0.00	0.00
13,900.00	90.61	89.28	6,201.15	-148.49	7,598.00	7,595.54	0.00	0.00	0.00
14,000.00	90.61	89.28	6,200.09	-147.24	7,697.99	7,695.53	0.00	0.00	0.00
14,100.00	90.61	89.28	6,199.03	-145.99	7,797.98	7,795.53	0.00	0.00	0.00
14,200.00	90.61	89.28	6,197.97	-144.73	7,897.96	7,895.52	0.00	0.00	0.00
14,300.00	90.61	89.28	6,196.91	-143.48	7,997.95	7,995.52	0.00	0.00	0.00
14,400.00	90.61	89.28	6,195.84	-142.22	8,097.94	8,095.51	0.00	0.00	0.00
14,500.00	90.61	89.28	6,194.78	-140.97	8,197.92	8,195.50	0.00	0.00	0.00
14,600.00	90.61	89.28	6,193.72	-139.71	8,297.91	8,295.50	0.00	0.00	0.00
14,700.00	90.61	89.28	6,192.66	-138.46	8,397.90	8,395.49	0.00	0.00	0.00
14,800.00	90.61	89.28	6,191.60	-137.20	8,497.88	8,495.49	0.00	0.00	0.00
14,900.00	90.61	89.28	6,190.53	-135.95	8,597.87	8,595.48	0.00	0.00	0.00
15,000.00	90.61	89.28	6,189.47	-134.69	8,697.86	8,695.48	0.00	0.00	0.00
15,100.00	90.61	89.28	6,188.41	-133.44	8,797.84	8,795.47	0.00	0.00	0.00
15,200.00	90.61	89.28	6,187.35	-132.18	8,897.83	8,895.47	0.00	0.00	0.00
15,300.00	90.61	89.28	6,186.29	-130.93	8,997.82	8,995.46	0.00	0.00	0.00
15,400.00	90.61	89.28	6,185.22	-129.68	9,097.80	9,095.45	0.00	0.00	0.00
15,500.00	90.61	89.28	6,184.16	-128.42	9,197.79	9,195.45	0.00	0.00	0.00
15,600.00	90.61	89.28	6,183.10	-127.17	9,297.77	9,295.44	0.00	0.00	0.00
15,700.00	90.61	89.28	6,182.04	-125.91	9,397.76	9,395.44	0.00	0.00	0.00
15,800.00	90.61	89.28	6,180.98	-124.66	9,497.75	9,495.43	0.00	0.00	0.00
15,900.00	90.61	89.28	6,179.91	-123.40	9,597.73	9,595.43	0.00	0.00	0.00
TD at 15986.42									
15,986.42	90.61	89.28	6,179.00	-122.32	9,684.14	9,681.84	0.00	0.00	0.00

Database:	EDMDBBW	Local Co-ordinate Reference:	Well Anschutz Eq Farms 4-62-9-3340C2
Company:	Bill Barrett Corp.	TVD Reference:	Well @ 4544.00usft
Project:	Weld Co., CO	MD Reference:	Well @ 4544.00usft
Site:	Sec.9-T4N-R62W	North Reference:	True
Well:	Anschutz Eq Farms 4-62-9-3340C2	Survey Calculation Method:	Minimum Curvature
Wellbore:	Wellbore #1		
Design:	Design #1		

Design Targets									
Target Name	Dip Angle	Dip Dir.	TVD	+N/-S	+E/-W	Northing	Easting	Latitude	Longitude
- hit/miss target	(°)	(°)	(usft)	(usft)	(usft)	(usft)	(usft)		
- Shape									
Anschutz Eq Farms 4-62	0.00	0.00	6,179.00	-122.32	9,684.14	1,363,644.951	3,333,516.556	40° 19' 31.552 N	104° 18' 13.601 W
- plan hits target center									
- Point									

Casing Points				
Measured Depth	Vertical Depth	Name	Casing Diameter	Hole Diameter
(usft)	(usft)		(")	(")
6,569.16	6,279.00	7" Csg.	7	8-3/4

Formations					
Measured Depth	Vertical Depth	Name	Lithology	Dip	Dip Direction
(usft)	(usft)			(°)	(°)
4,705.17	4,692.00	Shannon		-0.61	89.28
5,983.03	5,965.00	Sharon Springs		-0.61	89.28
6,094.90	6,065.00	Niobrara		-0.61	89.28
6,152.17	6,111.00	A Chalk		-0.61	89.28
6,245.10	6,176.00	B Chalk		-0.61	89.28
6,408.36	6,255.00	Top C target		-0.61	89.28

Plan Annotations				
Measured Depth	Vertical Depth	Local Coordinates		Comment
(usft)	(usft)	+N/-S (usft)	+E/-W (usft)	
900.00	900.00	0.00	0.00	Start Build 2.00
1,123.54	1,123.32	-6.58	-5.72	Start 3966.98 hold at 1123.54 MD
5,090.52	5,078.22	-239.94	-208.62	Start Drop -2.00
5,314.06	5,301.54	-246.52	-214.34	Start 500.03 hold at 5314.06 MD
5,814.09	5,801.57	-246.52	-214.34	Start Build 12.00
6,569.16	6,279.00	-240.47	268.16	Start 9417.26 hold at 6569.16 MD
15,986.42	6,179.00	-122.32	9,684.14	TD at 15986.42