

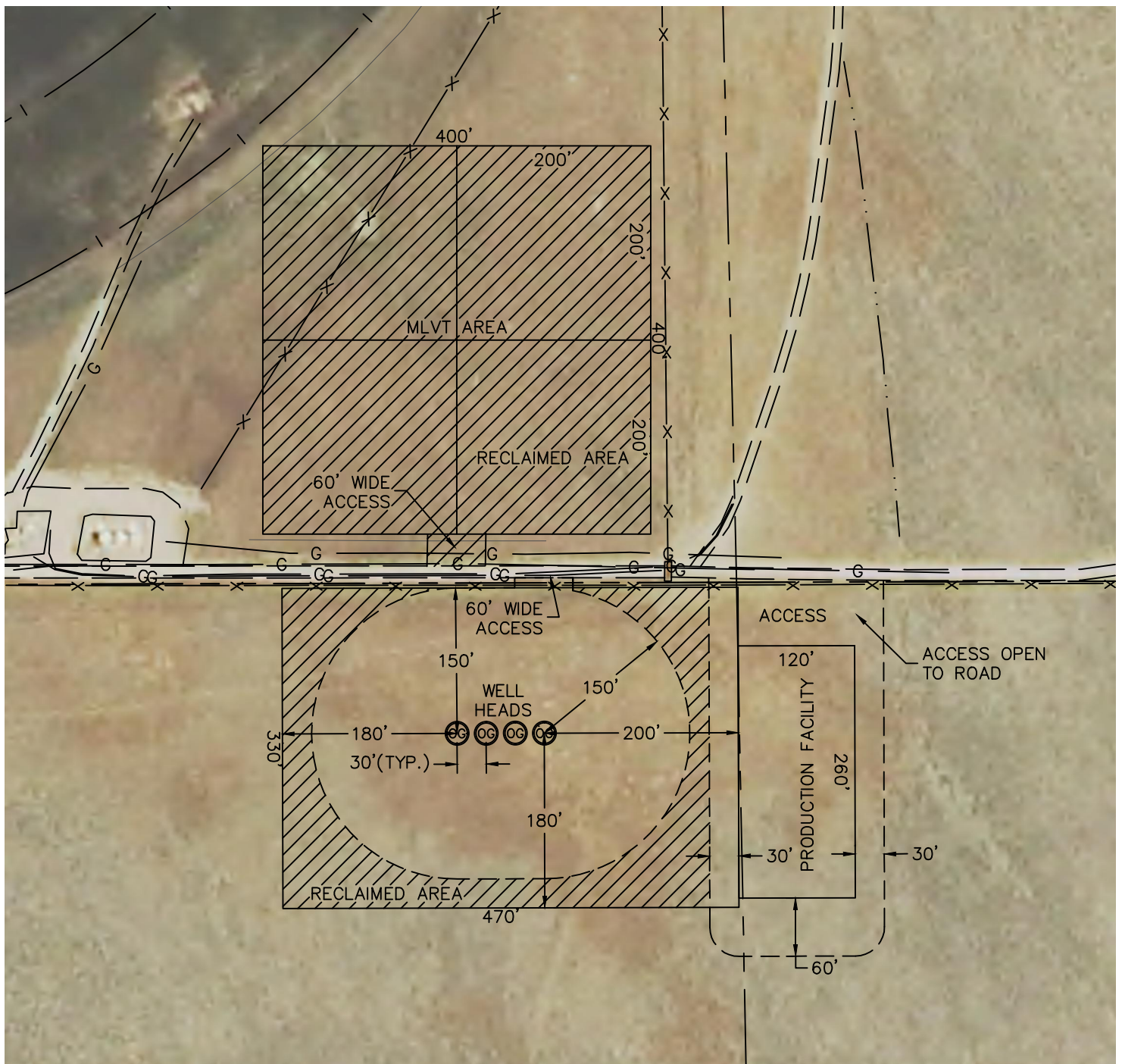


Lat40°, Inc. 6250 W. 10th Street, Unit 2, Greeley, CO 970-515-5294

PROPOSED SCALED FACILITY DRAWING

SATER 4N63W19M PAD

SECTION: 19
TOWNSHIP: 4N
RANGE: 63W



LEGEND

- PROPOSED WELL HEAD
- TANK BATTERY
- WATER TANK
- WATER VAULT
- SEPARATOR
- ECD
- METER
- VRU- VAPOR RECOVERY UNIT

TOTAL DISTURBED AREA OF LOCATION: ±8.6 ACRES
TOTAL SIZE OF LOCATION AFTER RECLAMATION: ±3.9 ACRES

