

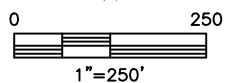
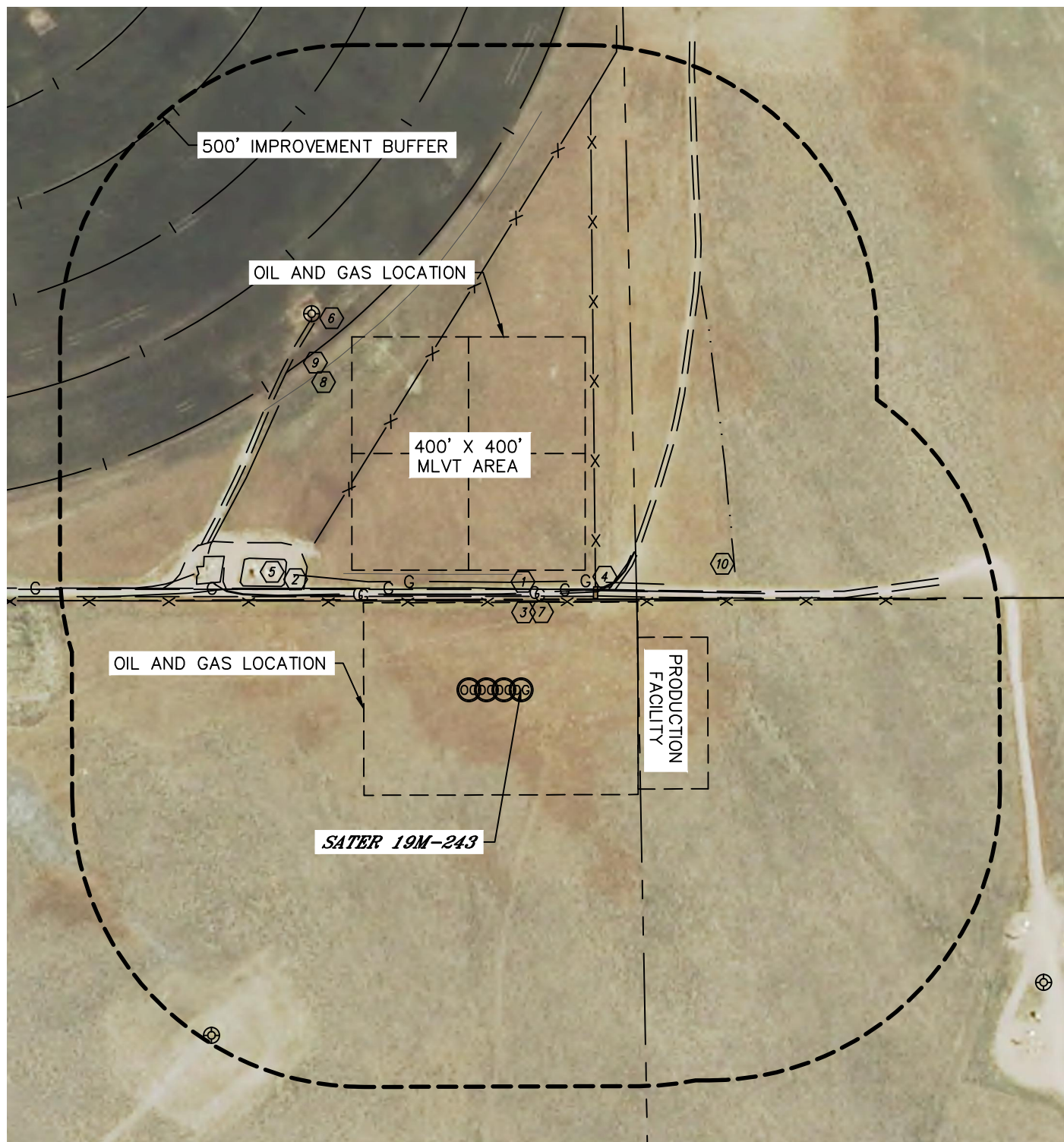


Lat40°, Inc. 6250 W. 10th Street, Unit 2, Greeley, CO 970-515-5294

LOCATION DRAWING

SATER 4N63W19M PAD

SECTION: 19
TOWNSHIP: 4N
RANGE: 63W





Lat40°, Inc. 6250 W. 10th Street, Unit 2, Greeley, CO 970-515-5294









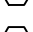

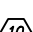

LOCATION DRAWING

SATER 4N63W19M PAD

SECTION: 19
TOWNSHIP: 4N
RANGE: 63W

IMPROVEMENTS:

(MEASURED FROM THE PROPOSED SATER 19M-243 WELL LOCATION)

-  NO BUILDING UNITS WITHIN 500' IMPROVEMENT BUFFER
-  NO BUILDINGS WITHIN 500' IMPROVEMENT BUFFER
-  ROAD 160' N, 228' NE, 593' NW
-  EDGE OF GRAVEL 411' NW
-  FENCE 152' N, 218' NE, 434' NW
-  CATTLE GUARD 200' NE
-  EX. PRODUCTION EQUIPMENT (NOBLE) 447' & 547' NW
-  EX. WELL HEAD 795' SW, 725' NW
-  GAS LINE LOCATES $\pm 163'$, $\pm 165'$ & $\pm 173'$ N, $\pm 585'$ NW (NOBLE)
-  EDGE OF FIELD 643' NW
-  IRRIGATION PIVOT TRACK 676', 832' & 992' NW
-  LOW AREA 419' NE