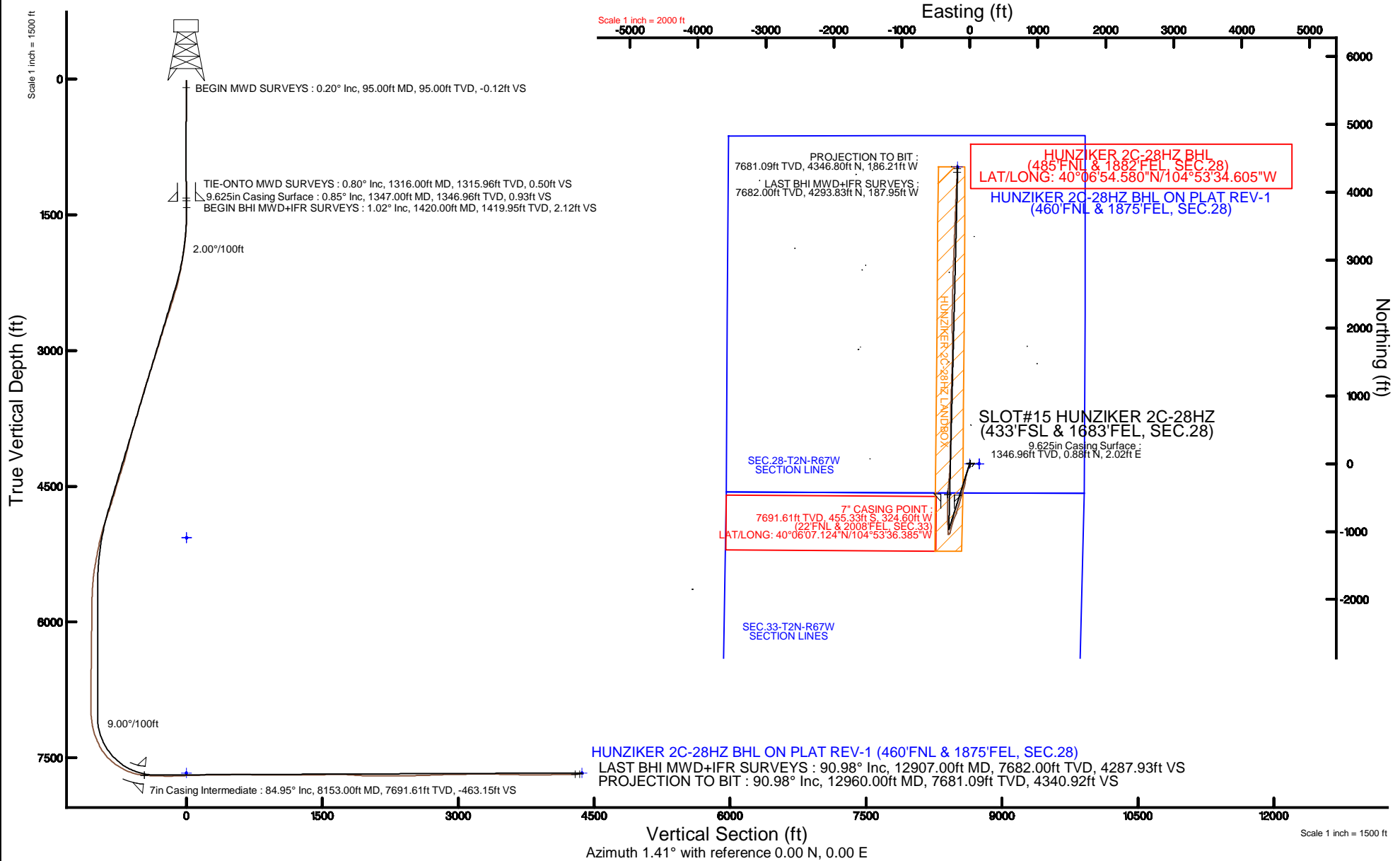


KERR-MCGEE OIL & GAS ONSHORE LP (WA)

Location: COLORADO Slot: SLOT#15 HUNZIKER 2C-28HZ (433'FSL & 1683'FEL, SEC.28)
 Field: WELD COUNTY (UTM/TRUE NORTH) Well: HUNZIKER 2C-28HZ
 Facility: SEC.28-T2N-R67W Wellbore: HUNZIKER 2C-28HZ PWB

Plot reference wellpath is HUNZIKER 2C-28HZ (REV-B.0) PWB

True vertical depths are referenced to PRECISION 460 (20'KB) (RKB)	Grid System: NAD83 / UTM Zone 13 North, US feet
Measured depths are referenced to PRECISION 460 (20'KB) (RKB)	North Reference: True north
PRECISION 460 (20'KB) (RKB) to Mean Sea Level: 5069 feet	Scale: True distance
Mean Sea Level to Mud line (At Slot: SLOT#15 HUNZIKER 2C-28HZ (433'FSL & 1683'FEL, SEC.28)): 0 feet	Depths are in feet
Coordinates are in feet referenced to Slot	Created by: amarcar on 03/Jun/2015





Actual Wellpath Report

HUNZIKER 2C-28HZ AWP
Page 1 of 6



REFERENCE WELLPATH IDENTIFICATION			
Operator	KERR-MCGEE OIL & GAS ONSHORE LP (WA)	Slot	SLOT#15 HUNZIKER 2C-28HZ (433'FSL & 1683'FEL, SEC.28)
Area	COLORADO	Well	HUNZIKER 2C-28HZ
Field	WELD COUNTY (UTM/TRUE NORTH)	Wellbore	HUNZIKER 2C-28HZ AWB <12960>
Facility	SEC.28-T2N-R67W		

REPORT SETUP INFORMATION			
Projection System	NAD83 / UTM Zone 13 North, US feet	Software System	WellArchitect® 4.0.0
North Reference	True	User	Amarcar
Scale	0.999601	Report Generated	03/Jun/2015 at 12:21
Convergence at slot	0.07° East	Database/Source file	KERR MCGEE UTM/HUNZIKER_2C-28HZ_AWB__12960_.xml

WELLPATH LOCATION						
	Local coordinates		Grid coordinates		Geographic coordinates	
	North[ft]	East[ft]	Easting[US ft]	Northing[US ft]	Latitude	Longitude
Slot Location	-4193.40	-1035.04	1670538.28	14564341.86	40°06'11.624"N	104°53'32.208"W
Facility Reference Pt			1671567.66	14568534.88	40°06'53.064"N	104°53'18.888"W
Field Reference Pt			1698235.31	14552047.82	40°04'09.600"N	104°47'36.000"W

WELLPATH DATUM			
Calculation method	Minimum curvature	PRECISION 460 (20'KB) (RKB) to Facility Vertical Datum	5069.00ft
Horizontal Reference Pt	Slot	PRECISION 460 (20'KB) (RKB) to Mean Sea Level	5069.00ft
Vertical Reference Pt	PRECISION 460 (20'KB) (RKB)	PRECISION 460 (20'KB) (RKB) to Mud Line at Slot (SLOT#15 HUNZIKER 2C-28HZ (433'FSL & 1683'FEL, SEC.28))	5069.00ft
MD Reference Pt	PRECISION 460 (20'KB) (RKB)	Section Origin	N 0.00, E 0.00 ft
Field Vertical Reference	Mean Sea Level	Section Azimuth	1.41°



Actual Wellpath Report

HUNZIKER 2C-28HZ AWP
Page 2 of 6



REFERENCE WELLPATH IDENTIFICATION			
Operator	KERR-MCGEE OIL & GAS ONSHORE LP (WA)	Slot	SLOT#15 HUNZIKER 2C-28HZ (433'FSL & 1683'FEL, SEC.28)
Area	COLORADO	Well	HUNZIKER 2C-28HZ
Field	WELD COUNTY (UTM/TRUE NORTH)	Wellbore	HUNZIKER 2C-28HZ AWB <12960>
Facility	SEC.28-T2N-R67W		

WELLPATH DATA (136 stations) † = interpolated/extrapolated station										
MD [ft]	Inclination [°]	Azimuth [°]	TVD [ft]	Vert Sect [ft]	North [ft]	East [ft]	Latitude	Longitude	DLS [°/100ft]	Comments
0.00†	0.000	163.800	0.00	0.00	0.00	0.00	40°06'11.624"N	104°53'32.208"W	0.00	
20.00	0.000	163.800	20.00	0.00	0.00	0.00	40°06'11.624"N	104°53'32.208"W	0.00	
95.00	0.200	163.800	95.00	-0.12	-0.13	0.04	40°06'11.623"N	104°53'32.208"W	0.27	BEGIN MWD SURVEYS
186.00	0.300	148.500	186.00	-0.48	-0.48	0.21	40°06'11.619"N	104°53'32.205"W	0.13	
274.00	0.400	147.500	274.00	-0.92	-0.94	0.49	40°06'11.615"N	104°53'32.202"W	0.11	
362.00	0.100	121.800	362.00	-1.22	-1.24	0.72	40°06'11.612"N	104°53'32.199"W	0.36	
448.00	0.300	129.100	448.00	-1.39	-1.42	0.96	40°06'11.610"N	104°53'32.196"W	0.23	
543.00	0.500	140.200	542.99	-1.86	-1.89	1.42	40°06'11.605"N	104°53'32.190"W	0.22	
639.00	0.300	159.700	638.99	-2.41	-2.45	1.77	40°06'11.600"N	104°53'32.185"W	0.25	
732.00	0.300	123.700	731.99	-2.76	-2.81	2.06	40°06'11.596"N	104°53'32.181"W	0.20	
827.00	0.600	129.000	826.99	-3.20	-3.27	2.65	40°06'11.592"N	104°53'32.174"W	0.32	
921.00	0.300	354.900	920.99	-3.25	-3.33	3.01	40°06'11.591"N	104°53'32.169"W	0.89	
1016.00	0.400	23.600	1015.98	-2.70	-2.78	3.12	40°06'11.597"N	104°53'32.168"W	0.21	
1111.00	1.000	336.400	1110.98	-1.64	-1.71	2.93	40°06'11.607"N	104°53'32.170"W	0.83	
1208.00	0.400	337.600	1207.97	-0.57	-0.63	2.46	40°06'11.618"N	104°53'32.176"W	0.62	
1316.00	0.800	344.300	1315.96	0.50	0.45	2.11	40°06'11.628"N	104°53'32.181"W	0.38	TIE-ONTO MWD SURVEYS
1420.00	1.020	6.410	1419.95	2.12	2.07	2.02	40°06'11.644"N	104°53'32.182"W	0.39	BEGIN BHI MWD+IFR SURVEYS
1469.00	0.380	258.730	1468.95	2.51	2.47	1.91	40°06'11.648"N	104°53'32.183"W	2.43	
1559.00	1.830	215.010	1558.93	1.25	1.23	0.79	40°06'11.636"N	104°53'32.198"W	1.75	
1649.00	3.790	202.030	1648.82	-2.73	-2.70	-1.15	40°06'11.597"N	104°53'32.223"W	2.28	
1739.00	5.550	197.330	1738.52	-9.70	-9.61	-3.56	40°06'11.529"N	104°53'32.254"W	2.00	
1829.00	7.330	196.230	1827.94	-19.43	-19.28	-6.46	40°06'11.433"N	104°53'32.291"W	1.98	
1919.00	8.530	198.640	1917.08	-31.36	-31.12	-10.20	40°06'11.316"N	104°53'32.339"W	1.38	
2008.00	9.930	202.860	2004.93	-44.81	-44.45	-15.29	40°06'11.185"N	104°53'32.405"W	1.75	
2098.00	11.450	199.130	2093.36	-60.54	-60.04	-21.24	40°06'11.031"N	104°53'32.481"W	1.85	
2188.00	13.240	196.970	2181.28	-78.98	-78.34	-27.17	40°06'10.850"N	104°53'32.558"W	2.05	
2278.00	15.020	196.780	2268.55	-100.15	-99.36	-33.55	40°06'10.642"N	104°53'32.640"W	1.98	
2368.00	16.260	194.900	2355.22	-123.65	-122.70	-40.16	40°06'10.411"N	104°53'32.725"W	1.49	
2458.00	17.710	194.130	2441.29	-149.26	-148.16	-46.74	40°06'10.160"N	104°53'32.809"W	1.63	
2548.00	17.960	194.680	2526.97	-176.11	-174.85	-53.60	40°06'09.896"N	104°53'32.898"W	0.33	
2638.00	18.210	189.790	2612.53	-203.53	-202.14	-59.50	40°06'09.626"N	104°53'32.974"W	1.71	
2728.00	17.960	185.370	2698.08	-231.29	-229.81	-63.19	40°06'09.353"N	104°53'33.021"W	1.55	
2817.00	17.310	185.860	2782.90	-258.18	-256.64	-65.83	40°06'09.088"N	104°53'33.055"W	0.75	
2907.00	16.720	189.830	2868.96	-284.34	-282.72	-69.41	40°06'08.830"N	104°53'33.101"W	1.45	
2997.00	17.890	195.720	2954.90	-310.54	-308.79	-75.36	40°06'08.573"N	104°53'33.178"W	2.34	
3087.00	18.360	195.090	3040.43	-337.71	-335.78	-82.80	40°06'08.306"N	104°53'33.274"W	0.57	
3177.00	18.320	198.330	3125.86	-365.01	-362.89	-90.94	40°06'08.038"N	104°53'33.378"W	1.13	
3267.00	18.090	196.480	3211.36	-392.04	-389.72	-99.35	40°06'07.773"N	104°53'33.487"W	0.69	
3357.00	18.230	194.930	3296.87	-419.22	-416.72	-106.94	40°06'07.506"N	104°53'33.584"W	0.56	
3446.00	18.200	196.320	3381.41	-446.18	-443.51	-114.43	40°06'07.241"N	104°53'33.681"W	0.49	
3536.00	16.950	196.270	3467.21	-472.44	-469.59	-122.06	40°06'06.983"N	104°53'33.779"W	1.39	
3626.00	15.680	197.380	3553.59	-496.82	-493.79	-129.37	40°06'06.744"N	104°53'33.873"W	1.45	
3716.00	17.330	197.610	3639.87	-521.38	-518.18	-137.05	40°06'06.503"N	104°53'33.972"W	1.83	
3806.00	16.460	194.200	3725.99	-546.69	-543.32	-144.24	40°06'06.255"N	104°53'34.064"W	1.46	
3896.00	16.940	195.400	3812.20	-571.85	-568.32	-150.85	40°06'06.008"N	104°53'34.149"W	0.66	

REFERENCE WELLPATH IDENTIFICATION			
Operator	KERR-MCGEE OIL & GAS ONSHORE LP (WA)	Slot	SLOT#15 HUNZIKER 2C-28HZ (433'FSL & 1683'FEL, SEC.28)
Area	COLORADO	Well	HUNZIKER 2C-28HZ
Field	WELD COUNTY (UTM/TRUE NORTH)	Wellbore	HUNZIKER 2C-28HZ AWB <12960>
Facility	SEC.28-T2N-R67W		

WELLPATH DATA (136 stations) † = interpolated/extrapolated station										
MD [ft]	Inclination [°]	Azimuth [°]	TVD [ft]	Vert Sect [ft]	North [ft]	East [ft]	Latitude	Longitude	DLS [°/100ft]	Comments
3986.00	17.290	194.810	3898.21	-597.58	-593.89	-157.75	40°06'05.755"N	104°53'34.238"W	0.43	
4075.00	15.700	196.560	3983.54	-622.07	-618.22	-164.56	40°06'05.515"N	104°53'34.326"W	1.87	
4165.00	15.940	205.770	4070.15	-645.08	-641.02	-173.41	40°06'05.289"N	104°53'34.440"W	2.80	
4255.00	14.990	195.580	4156.91	-667.63	-663.37	-181.91	40°06'05.068"N	104°53'34.549"W	3.19	
4345.00	16.290	193.030	4243.57	-691.28	-686.88	-187.88	40°06'04.836"N	104°53'34.626"W	1.63	
4435.00	18.190	191.980	4329.53	-717.46	-712.92	-193.64	40°06'04.579"N	104°53'34.700"W	2.14	
4525.00	18.960	203.080	4414.86	-744.86	-740.12	-202.29	40°06'04.310"N	104°53'34.811"W	4.01	
4615.00	17.820	205.470	4500.27	-771.02	-766.01	-213.95	40°06'04.054"N	104°53'34.961"W	1.52	
4704.00	17.570	205.180	4585.06	-795.75	-790.46	-225.52	40°06'03.813"N	104°53'35.110"W	0.30	
4794.00	18.330	199.720	4670.68	-821.62	-816.08	-236.07	40°06'03.559"N	104°53'35.246"W	2.05	
4884.00	19.780	198.320	4755.75	-849.63	-843.86	-245.64	40°06'03.285"N	104°53'35.369"W	1.69	
4974.00	19.320	197.140	4840.56	-878.53	-872.54	-254.81	40°06'03.001"N	104°53'35.487"W	0.67	
5064.00	17.890	196.360	4925.85	-906.21	-900.03	-263.09	40°06'02.730"N	104°53'35.594"W	1.61	
5154.00	15.250	192.700	5012.11	-931.18	-924.85	-269.59	40°06'02.484"N	104°53'35.677"W	3.15	
5243.00	13.200	192.090	5098.38	-952.65	-946.21	-274.29	40°06'02.273"N	104°53'35.738"W	2.31	
5333.00	11.790	195.130	5186.25	-971.68	-965.13	-278.84	40°06'02.086"N	104°53'35.796"W	1.73	
5423.00	11.090	193.990	5274.46	-989.06	-982.41	-283.34	40°06'01.916"N	104°53'35.854"W	0.82	
5513.00	9.740	190.900	5362.97	-1005.02	-998.28	-286.87	40°06'01.759"N	104°53'35.900"W	1.62	
5603.00	7.940	188.940	5451.90	-1018.69	-1011.90	-289.28	40°06'01.624"N	104°53'35.931"W	2.03	
5693.00	5.520	211.210	5541.29	-1028.61	-1021.74	-292.49	40°06'01.527"N	104°53'35.972"W	3.91	
5782.00	4.800	208.870	5629.93	-1035.63	-1028.67	-296.50	40°06'01.459"N	104°53'36.024"W	0.84	
5872.00	3.090	247.940	5719.73	-1039.94	-1032.88	-300.57	40°06'01.417"N	104°53'36.076"W	3.43	
5962.00	1.030	228.170	5809.66	-1041.46	-1034.33	-303.42	40°06'01.403"N	104°53'36.113"W	2.39	
6321.00	1.140	227.660	6168.60	-1046.14	-1038.88	-308.46	40°06'01.358"N	104°53'36.177"W	0.03	
6681.00	0.820	236.850	6528.55	-1050.07	-1042.71	-313.27	40°06'01.320"N	104°53'36.239"W	0.10	
6950.00	0.650	261.520	6797.52	-1051.43	-1043.98	-316.39	40°06'01.307"N	104°53'36.279"W	0.13	
7130.00	0.230	268.610	6977.52	-1051.62	-1044.14	-317.76	40°06'01.306"N	104°53'36.297"W	0.23	
7220.00	5.580	358.300	7067.38	-1047.26	-1039.77	-318.07	40°06'01.349"N	104°53'36.301"W	6.20	
7309.00	12.170	2.570	7155.26	-1033.54	-1026.06	-317.78	40°06'01.484"N	104°53'36.297"W	7.44	
7399.00	17.520	356.770	7242.23	-1010.54	-1003.04	-318.12	40°06'01.712"N	104°53'36.302"W	6.16	
7489.00	24.420	358.500	7326.22	-978.41	-970.88	-319.37	40°06'02.030"N	104°53'36.318"W	7.70	
7579.00	31.320	354.670	7405.74	-936.55	-928.93	-322.03	40°06'02.444"N	104°53'36.352"W	7.92	
7669.00	40.360	357.050	7478.63	-884.15	-876.43	-325.71	40°06'02.963"N	104°53'36.399"W	10.16	
7759.00	50.370	359.440	7541.78	-820.29	-812.50	-327.55	40°06'03.595"N	104°53'36.423"W	11.28	
7849.00	57.170	2.040	7594.95	-747.75	-739.96	-326.55	40°06'04.312"N	104°53'36.410"W	7.91	
7938.00	65.350	359.850	7637.71	-669.79	-662.01	-325.32	40°06'05.082"N	104°53'36.394"W	9.44	
8028.00	72.460	358.490	7670.09	-585.94	-578.11	-326.56	40°06'05.911"N	104°53'36.410"W	8.02	
8116.00	83.970	1.900	7688.03	-499.97	-492.12	-326.21	40°06'06.761"N	104°53'36.406"W	13.62	
8153.00†	84.954	3.110	7691.61	-463.15	-455.33	-324.60	40°06'07.124"N	104°53'36.385"W	4.20	7" CASING POINT
8239.00	87.250	5.910	7697.45	-377.49	-369.81	-317.85	40°06'07.969"N	104°53'36.298"W	4.20	
8329.00	88.670	5.080	7700.66	-287.78	-280.28	-309.24	40°06'08.854"N	104°53'36.188"W	1.83	
8419.00	89.960	4.290	7701.73	-197.94	-190.59	-301.89	40°06'09.741"N	104°53'36.093"W	1.68	
8509.00	91.690	3.360	7700.44	-108.03	-100.81	-295.89	40°06'10.628"N	104°53'36.016"W	2.18	
8599.00	92.520	2.840	7697.13	-18.13	-11.00	-291.02	40°06'11.515"N	104°53'35.953"W	1.09	
8689.00	91.720	1.750	7693.80	71.79	78.86	-287.42	40°06'12.403"N	104°53'35.907"W	1.50	



Actual Wellpath Report

HUNZIKER 2C-28HZ AWP
Page 4 of 6



REFERENCE WELLPATH IDENTIFICATION			
Operator	KERR-MCGEE OIL & GAS ONSHORE LP (WA)	Slot	SLOT#15 HUNZIKER 2C-28HZ (433'FSL & 1683'FEL, SEC.28)
Area	COLORADO	Well	HUNZIKER 2C-28HZ
Field	WELD COUNTY (UTM/TRUE NORTH)	Wellbore	HUNZIKER 2C-28HZ AWB <12960>
Facility	SEC.28-T2N-R67W		

WELLPATH DATA (136 stations)										
MD [ft]	Inclination [°]	Azimuth [°]	TVD [ft]	Vert Sect [ft]	North [ft]	East [ft]	Latitude	Longitude	DLS [°/100ft]	Comments
8779.00	91.290	0.600	7691.44	161.76	168.81	-285.58	40°06'13.292"N	104°53'35.883"W	1.36	
8868.00	91.170	0.590	7689.53	250.73	257.79	-284.65	40°06'14.171"N	104°53'35.871"W	0.14	
8958.00	90.830	0.450	7687.96	340.71	347.77	-283.84	40°06'15.061"N	104°53'35.861"W	0.41	
9048.00	90.520	0.500	7686.90	430.69	437.76	-283.09	40°06'15.950"N	104°53'35.851"W	0.35	
9138.00	90.400	0.200	7686.17	520.67	527.76	-282.54	40°06'16.839"N	104°53'35.844"W	0.36	
9227.00	89.870	359.960	7685.96	609.65	616.76	-282.42	40°06'17.719"N	104°53'35.843"W	0.65	
9317.00	89.660	359.800	7686.33	699.61	706.75	-282.61	40°06'18.608"N	104°53'35.845"W	0.29	
9407.00	89.720	1.170	7686.82	789.60	796.75	-281.84	40°06'19.498"N	104°53'35.835"W	1.52	
9497.00	90.210	2.320	7686.87	879.59	886.70	-279.10	40°06'20.387"N	104°53'35.800"W	1.39	
9587.00	90.150	2.370	7686.59	969.58	976.63	-275.42	40°06'21.275"N	104°53'35.753"W	0.09	
9677.00	89.660	1.750	7686.74	1059.57	1066.57	-272.19	40°06'22.164"N	104°53'35.711"W	0.88	
9767.00	89.560	1.660	7687.35	1149.57	1156.53	-269.51	40°06'23.053"N	104°53'35.676"W	0.15	
9857.00	89.230	1.640	7688.30	1239.57	1246.48	-266.92	40°06'23.942"N	104°53'35.643"W	0.37	
9946.00	89.810	2.510	7689.05	1328.56	1335.42	-263.69	40°06'24.821"N	104°53'35.602"W	1.17	
10036.00	91.010	2.160	7688.41	1418.54	1425.34	-260.03	40°06'25.709"N	104°53'35.554"W	1.39	
10126.00	90.950	2.120	7688.87	1508.52	1515.27	-256.67	40°06'26.598"N	104°53'35.511"W	0.08	
10216.00	91.200	1.920	7685.18	1598.50	1605.20	-253.50	40°06'27.487"N	104°53'35.470"W	0.36	
10306.00	89.500	0.310	7684.63	1688.49	1695.17	-251.74	40°06'28.376"N	104°53'35.448"W	2.60	
10485.00	85.740	356.930	7692.06	1867.06	1873.91	-256.04	40°06'30.142"N	104°53'35.503"W	2.82	
10575.00	87.100	357.390	7697.68	1956.64	1963.62	-260.49	40°06'31.029"N	104°53'35.561"W	1.59	
10665.00	89.900	0.500	7700.04	2046.51	2053.55	-262.15	40°06'31.917"N	104°53'35.582"W	4.65	
10755.00	90.400	1.080	7699.80	2136.50	2143.54	-260.91	40°06'32.807"N	104°53'35.566"W	0.85	
10934.00	90.490	1.470	7698.41	2315.49	2322.49	-256.92	40°06'34.575"N	104°53'35.515"W	0.22	
11024.00	89.960	0.990	7698.06	2405.49	2412.47	-254.99	40°06'35.464"N	104°53'35.490"W	0.79	
11114.00	90.980	1.450	7697.32	2495.49	2502.45	-253.08	40°06'36.354"N	104°53'35.465"W	1.24	
11203.00	91.930	1.360	7695.06	2584.46	2591.39	-250.89	40°06'37.232"N	104°53'35.437"W	1.07	
11293.00	91.690	1.460	7692.22	2674.41	2681.32	-248.68	40°06'38.121"N	104°53'35.409"W	0.29	
11383.00	92.150	1.540	7689.20	2764.36	2771.24	-246.33	40°06'39.010"N	104°53'35.378"W	0.52	
11473.00	92.520	1.900	7685.54	2854.29	2861.12	-243.63	40°06'39.898"N	104°53'35.344"W	0.57	
11563.00	90.640	2.500	7683.05	2944.24	2951.01	-240.17	40°06'40.786"N	104°53'35.299"W	2.19	
11652.00	90.610	2.250	7682.08	3033.22	3039.93	-236.49	40°06'41.665"N	104°53'35.252"W	0.28	
11742.00	90.580	2.260	7681.15	3123.21	3129.86	-232.94	40°06'42.554"N	104°53'35.206"W	0.04	
11832.00	90.360	1.800	7680.41	3213.20	3219.80	-229.76	40°06'43.442"N	104°53'35.165"W	0.57	
11922.00	90.520	1.960	7679.72	3303.19	3309.75	-226.80	40°06'44.331"N	104°53'35.127"W	0.25	
12012.00	88.760	1.550	7680.29	3393.18	3399.70	-224.05	40°06'45.220"N	104°53'35.092"W	2.01	
12102.00	88.980	2.470	7682.06	3483.16	3489.63	-220.89	40°06'46.109"N	104°53'35.051"W	1.05	
12192.00	88.730	2.260	7683.86	3573.13	3579.53	-217.18	40°06'46.997"N	104°53'35.003"W	0.36	
12281.00	88.300	2.450	7686.16	3662.09	3668.43	-213.52	40°06'47.876"N	104°53'34.956"W	0.53	
12371.00	89.500	1.750	7687.89	3752.06	3758.35	-210.23	40°06'48.764"N	104°53'34.914"W	1.54	
12461.00	90.430	2.380	7687.95	3842.05	3848.29	-206.98	40°06'49.653"N	104°53'34.872"W	1.25	
12551.00	90.210	2.540	7687.44	3932.04	3938.20	-203.12	40°06'50.542"N	104°53'34.822"W	0.30	
12640.00	90.800	2.630	7686.66	4021.02	4027.11	-199.11	40°06'51.420"N	104°53'34.771"W	0.67	
12730.00	91.100	2.540	7685.17	4110.98	4117.00	-195.05	40°06'52.309"N	104°53'34.718"W	0.35	
12821.00	91.010	2.370	7683.49	4201.95	4207.90	-191.15	40°06'53.207"N	104°53'34.668"W	0.21	
12907.00	90.980	1.890	7682.00	4287.93	4293.83	-187.95	40°06'54.056"N	104°53'34.627"W	0.56	LAST BHI MWD+IFR SURVEYS



Actual Wellpath Report

HUNZIKER 2C-28HZ AWP
Page 5 of 6



REFERENCE WELLPATH IDENTIFICATION			
Operator	KERR-MCGEE OIL & GAS ONSHORE LP (WA)	Slot	SLOT#15 HUNZIKER 2C-28HZ (433'FSL & 1683'FEL, SEC.28)
Area	COLORADO	Well	HUNZIKER 2C-28HZ
Field	WELD COUNTY (UTM/TRUE NORTH)	Wellbore	HUNZIKER 2C-28HZ AWB <12960>
Facility	SEC.28-T2N-R67W		

WELLPATH DATA (136 stations)										
MD [ft]	Inclination [°]	Azimuth [°]	TVD [ft]	Vert Sect [ft]	North [ft]	East [ft]	Latitude	Longitude	DLS ["/100ft]	Comments
12960.00	90.980	1.890	7681.09	4340.92	4346.80	-186.21	40°06'54.580"N	104°53'34.605"W	0.00	PROJECTION TO BIT

HOLE & CASING SECTIONS - Ref Wellbore: HUNZIKER 2C-28HZ AWB <12960> Ref Wellpath: HUNZIKER 2C-28HZ AWP										
String/Diameter	Start MD [ft]	End MD [ft]	Interval [ft]	Start TVD [ft]	End TVD [ft]	Start N/S [ft]	Start E/W [ft]	End N/S [ft]	End E/W [ft]	
13.5in Open Hole	20.00	1357.00	1337.00	20.00	1356.96	0.00	0.00	1.03	2.00	
9.625in Casing Surface	20.00	1347.00	1327.00	20.00	1346.96	0.00	0.00	0.88	2.02	
8.75in Open Hole	1357.00	8163.00	6806.00	1356.96	7692.46	1.03	2.00	-445.38	-324.03	
7in Casing Intermediate	20.00	8153.00	8133.00	20.00	7691.61	0.00	0.00	-455.33	-324.60	
6.125in Open Hole	8163.00	12960.00	4797.00	7692.46	7681.09	-445.38	-324.03	4346.80	-186.21	

TARGETS									
Name	TVD [ft]	North [ft]	East [ft]	Grid East [US ft]	Grid North [US ft]	Latitude	Longitude	Shape	
SEC.04-T1N-R67W SECTION LINES	5069.00	-0.68	135.12	1670673.34	14564341.34	40°06'11.617"N	104°53'30.469"W	polygon	
SEC.28-T2N-R67W SECTION LINES	5069.00	-0.68	135.12	1670673.34	14564341.34	40°06'11.617"N	104°53'30.469"W	polygon	
SEC.33-T2N-R67W SECTION LINES	5069.00	-0.68	135.12	1670673.34	14564341.34	40°06'11.617"N	104°53'30.469"W	polygon	
HUNZIKER 2C-28HZ BHL ON PLAT REV-1 (460'FNL & 1875'FEL, SEC.28)	7667.00	4371.93	-178.72	1670354.34	14568711.82	40°06'54.828"N	104°53'34.508"W	point	
HUNZIKER 2C-28HZ LANDBOX	7667.00	0.00	0.00	1670538.28	14564341.86	40°06'11.624"N	104°53'32.208"W	polygon	

WELLPATH COMPOSITION - Ref Wellbore: HUNZIKER 2C-28HZ AWB <12960> Ref Wellpath: HUNZIKER 2C-28HZ AWP					
Start MD [ft]	End MD [ft]	Positional Uncertainty Model	Log Name/Comment	Wellbore	
20.00	1316.00	ISCWSA MWD, Rev. 2 (Standard)	CATHEDRAL MWD SURVEYS 13.5" <95-1316>	HUNZIKER 2C-28HZ AWB <12960>	
1316.00	8116.00	Custom APC_ISCWSA REV 2 MWD+IFR1+SC (approximation)	BHI MWD+IFR SURVEYS 8.75" <1420-8116>	HUNZIKER 2C-28HZ AWB <12960>	
8116.00	12907.00	Custom APC_ISCWSA REV 2 MWD+IFR1+SC (approximation)	BHI MWD+IFR SURVEYS 6.125" <8239-12907>	HUNZIKER 2C-28HZ AWB <12960>	
12907.00	12960.00	Blind Drilling (std)	Projection to bit	HUNZIKER 2C-28HZ AWB <12960>	



Actual Wellpath Report

HUNZIKER 2C-28HZ AWP
Page 6 of 6



REFERENCE WELLPATH IDENTIFICATION			
Operator	KERR-MCGEE OIL & GAS ONSHORE LP (WA)	Slot	SLOT#15 HUNZIKER 2C-28HZ (433'FSL & 1683'FEL, SEC.28)
Area	COLORADO	Well	HUNZIKER 2C-28HZ
Field	WELD COUNTY (UTM/TRUE NORTH)	Wellbore	HUNZIKER 2C-28HZ AWB <12960>
Facility	SEC.28-T2N-R67W		

WELLPATH COMMENTS					
MD [ft]	Inclination [°]	Azimuth [°]	TVD [ft]	Comment	
95.00	0.200	163.800	95.00	BEGIN MWD SURVEYS	
1316.00	0.800	344.300	1315.96	TIE-ONTO MWD SURVEYS	
1420.00	1.020	6.410	1419.95	BEGIN BHI MWD+IFR SURVEYS	
8153.00	84.954	3.110	7691.61	7" CASING POINT	
12907.00	90.980	1.890	7682.00	LAST BHI MWD+IFR SURVEYS	
12960.00	90.980	1.890	7681.09	PROJECTION TO BIT	