

WELL LOCATION DATA:
 LATITUDE: 40.41816°N
 LONGITUDE: 104.67167°W
 ELEVATION: 4635'
 PDOP: 1.3
 OPERATOR: CRW
 SURFACE USE: INDUSTRIAL
 PROPOSED GROUND ELEVATION: 4635'

NEAREST CULTURAL ITEMS:
 BUILDING: 502'
 BUILDING UNIT: 514'
 HIGH OCCUPANCY BUILDING UNIT: 3464'+
 DESIGNATED OUTSIDE ACTIVITY AREA: 5280'+
 PUBLIC ROAD: 422'
 ABOVE GROUND UTILITY: 360'
 RAILROAD: 4062'
 PROPERTY LINE: 232'

LAND SURVEYOR'S CERTIFICATION

LAMP, RYNEARSON & ASSOCIATES, INC., OF FT. COLLINS, COLORADO HAS, IN ACCORDANCE WITH A REQUEST FROM DUSTIN DYK FOR EXTRACTION OIL AND GAS, DETERMINED THE SURFACE LOCATION OF THE WELL DESIGNATED AS MT-MAPLEWOOD 5-8-7 TO BE 972' FROM THE NORTH LINE AND 1753' FROM THE WEST LINE OF SECTION 9 TOWNSHIP 5 NORTH, RANGE 65 WEST OF THE 6TH P.M., WELD COUNTY, COLORADO.

NOTES:

- DISTANCES ARE MEASURED PERPENDICULAR TO NEAREST SECTION LINE AND ARE SHOWN ON THE SAME SIDE OF THE SECTION LINE WHERE THE WELL IS LOCATED.
- THIS MAP DOES NOT REPRESENT A MONUMENTED BOUNDARY SURVEY. SIXTEENTH CORNER LOCATIONS ARE COMPUTED, UNLESS OTHERWISE NOTED.
- BOTTOM HOLE LOCATIONS AND HORIZONTAL COMPLETION ZONE PROVIDED BY OTHERS.

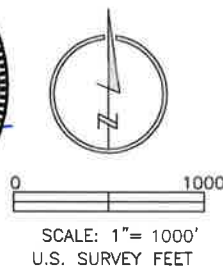
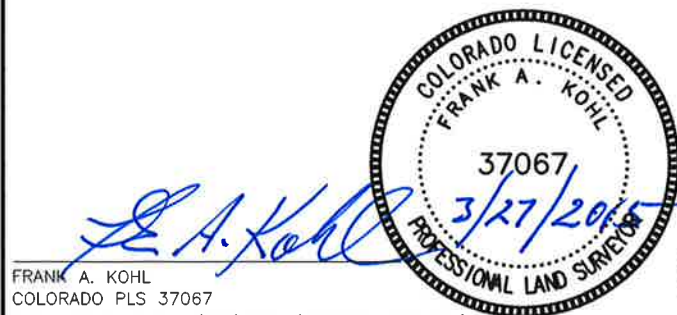
BASIS OF BEARING:

THE NORTH LINE OF THE NORTHEAST QUARTER OF SECTION 9-T5N-R65W BEARS N87°38'26"E BETWEEN THE NORTH QUARTER CORNER OF SECTION 9 MONUMENTED WITH A 3 1/4" A.C. STAMPED "PLS 33642" AND THE NORTHEAST CORNER OF SECTION 9 MONUMENTED WITH A 3 1/4" A.C. STAMPED "LS 4392" BASED ON THE COLORADO NORTH 0501 STATE PLANE COORDINATE SYSTEM.

ELEVATIONS ARE BASED ON NAVD 88, AS OBSERVED FROM GPS OBSERVATIONS

LEGEND

- | | | | |
|---|--|------|---|
| ● | ALIQUOT CORNER | △ | COMPUTED ALIQUOT CORNER FROM MONUMENT ACCESSORIES |
| ⊙ | BOTTOM HOLE | A.C. | ALUMINUM CAP |
| ⊠ | COMPUTED ALIQUOT CORNER FROM GLO RECORDS | R.B. | RANGE BOX |



FRANK A. KOHL
 COLORADO PLS 37067
 DATE OF SURVEY: 3/15/2012 (SECTION CONTROL)
 DATE OF SURVEY: 7/09/2014 (WELL LOCATION)



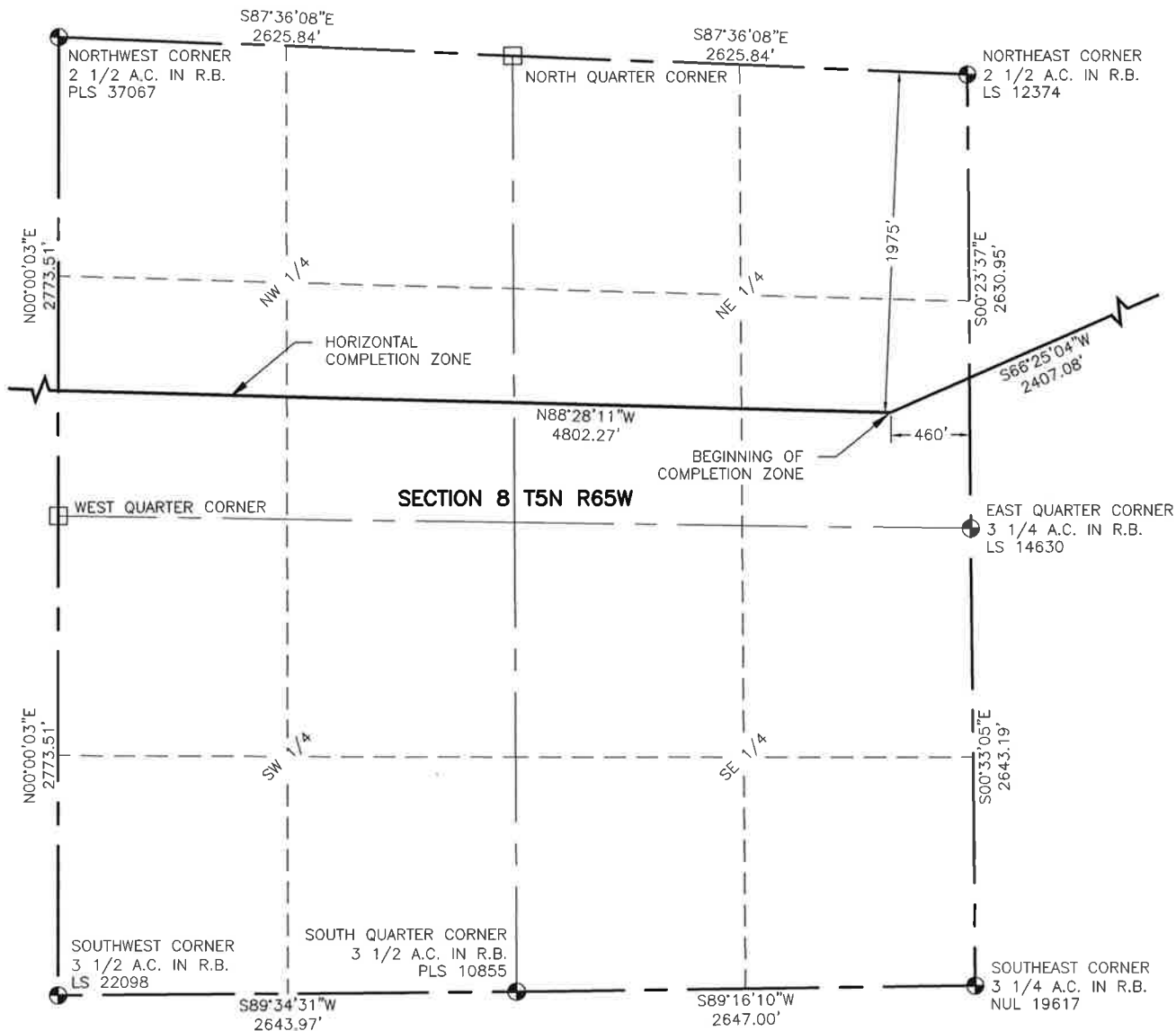
**LAMP RYNEARSON
& ASSOCIATES**

4715 Innovation Drive 970.226.0342 | P
 Fort Collins, CO 80525 970.226.0879 | F
 www.LRA-Inc.com

Proposed Well Location Exhibit
 MT-MAPLEWOOD 5-8-7
 1 OF 3

drawn by JPM	date 3/26/15	cogcc id	project - task number 0210035.00-502	book and page MR01/MR02	surface - location NE/4,NW/4, SEC 9 T5N R65W
-----------------	-----------------	----------	---	----------------------------	---

path\filename P:_Engineering\0210035 MRI Midtown\DRAWINGS\EXHIBITS\0210035EXWP-00U0.dwg



NOTES:

1. DISTANCES ARE MEASURED PERPENDICULAR TO NEAREST SECTION LINE AND ARE SHOWN ON THE SAME SIDE OF THE SECTION LINE WHERE THE WELL IS LOCATED.
2. THIS MAP DOES NOT REPRESENT A MONUMENTED BOUNDARY SURVEY. SIXTEENTH CORNER LOCATIONS ARE COMPUTED, UNLESS OTHERWISE NOTED.
3. BOTTOM HOLE LOCATIONS AND HORIZONTAL COMPLETION ZONE PROVIDED BY OTHERS.



0 1000

SCALE: 1" = 1000'
U.S. SURVEY FEET

LEGEND

- | | |
|--|------------------------------------|
| ■ COMPUTED ALIQUOT CORNER FROM GLO RECORDS | ● ALIQUOT CORNER |
| ■ A.C. ALUMINUM CAP | ⊙ BOTTOM HOLE |
| ■ R.B. RANGE BOX | ⊙ PROPOSED WELL |
| | □ COMPUTED ALIQUOT CORNER LOCATION |



**LAMP RYNEARSON
& ASSOCIATES**

4715 Innovation Drive 970.226.0342 | P
Fort Collins, CO 80525 970.226.0879 | F
www.LRA-Inc.com

Proposed Well Location Exhibit
MT-MAPLEWOOD 5-8-7
2 OF 3

drawn by
JPM

date
3/26/15

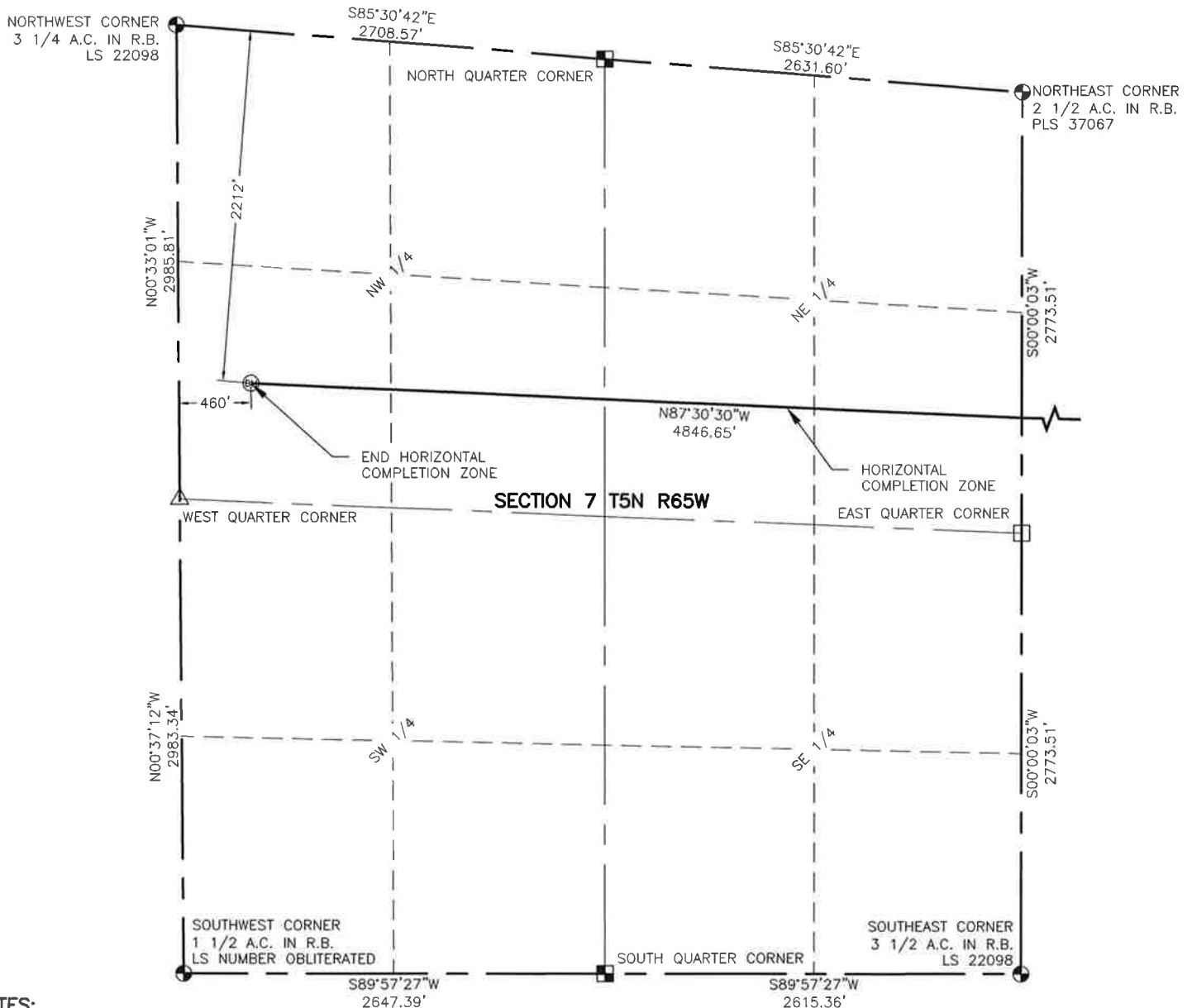
cogcc id

project - task number
0210035.00-502

book and page
MR01/MR02

surface - location
NE/4,NW/4, SEC 9 T5N R65W

path\filename P:_Engineering\0210035 MRI Midtown\DRAWINGS\EXHIBITS\0210035EXWP-00U1.dwg



NOTES:

1. DISTANCES ARE MEASURED PERPENDICULAR TO NEAREST SECTION LINE AND ARE SHOWN ON THE SAME SIDE OF THE SECTION LINE WHERE THE WELL IS LOCATED.
2. THIS MAP DOES NOT REPRESENT A MONUMENTED BOUNDARY SURVEY. SIXTEENTH CORNER LOCATIONS ARE COMPUTED, UNLESS OTHERWISE NOTED.
3. BOTTOM HOLE LOCATIONS AND HORIZONTAL COMPLETION ZONE PROVIDED BY OTHERS.



SCALE: 1"= 1000'
U.S. SURVEY FEET

LEGEND

- | | | | |
|--|---|------|----------------------------------|
| | ALIQUOT CORNER | | COMPUTED ALIQUOT CORNER LOCATION |
| | BOTTOM HOLE | A.C. | ALUMINUM CAP |
| | COMPUTED ALIQUOT CORNER FROM GLO RECORDS | R.B. | RANGE BOX |
| | COMPUTED ALIQUOT CORNER FROM MONUMENT ACCESSORIES | | |



**LAMP RYNEARSON
& ASSOCIATES**

4715 Innovation Drive 970.226.0342 | P
Fort Collins, CO 80525 970.226.0879 | F
www.LRA-Inc.com

Proposed Well Location Exhibit
MT-MAPLEWOOD 5-8-7
3 OF 3

drawn by	date	cogcc id	project - task number	book and page	surface - location
JPM	3/26/15		0210035.00-502	MR01/MR02	NE/4,NW/4, SEC 9 T5N R65W
path\filename P:_Engineering\0210035 MRI Midtown\DRAWINGS\EXHIBITS\0210035EXWP-00U2.dwg					