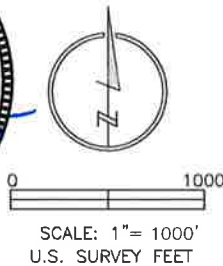


LAND SURVEYOR'S CERTIFICATION

LAMP, RYNEARSON & ASSOCIATES, INC., OF FT. COLLINS, COLORADO HAS, IN ACCORDANCE WITH A REQUEST FROM DUSTIN DYK FOR EXTRACTION OIL AND GAS, DETERMINED THE SURFACE LOCATION OF THE WELL DESIGNATED AS MT-MAPLEWOOD 1-8-7 TO BE 876' FROM THE NORTH LINE AND 1751' FROM THE WEST LINE OF SECTION 9 TOWNSHIP 5 NORTH, RANGE 65 WEST OF THE 6TH P.M., WELD COUNTY, COLORADO.

FRANK A. KOHL
COLORADO PLS 37067
DATE OF SURVEY: 3/15/2012 (SECTION CONTROL)
DATE OF SURVEY: 7/09/2014 (WELL LOCATION)

COLORADO LICENSED
FRANK A. KOHL
37067
3/27/2015
PROFESSIONAL LAND SURVEYOR

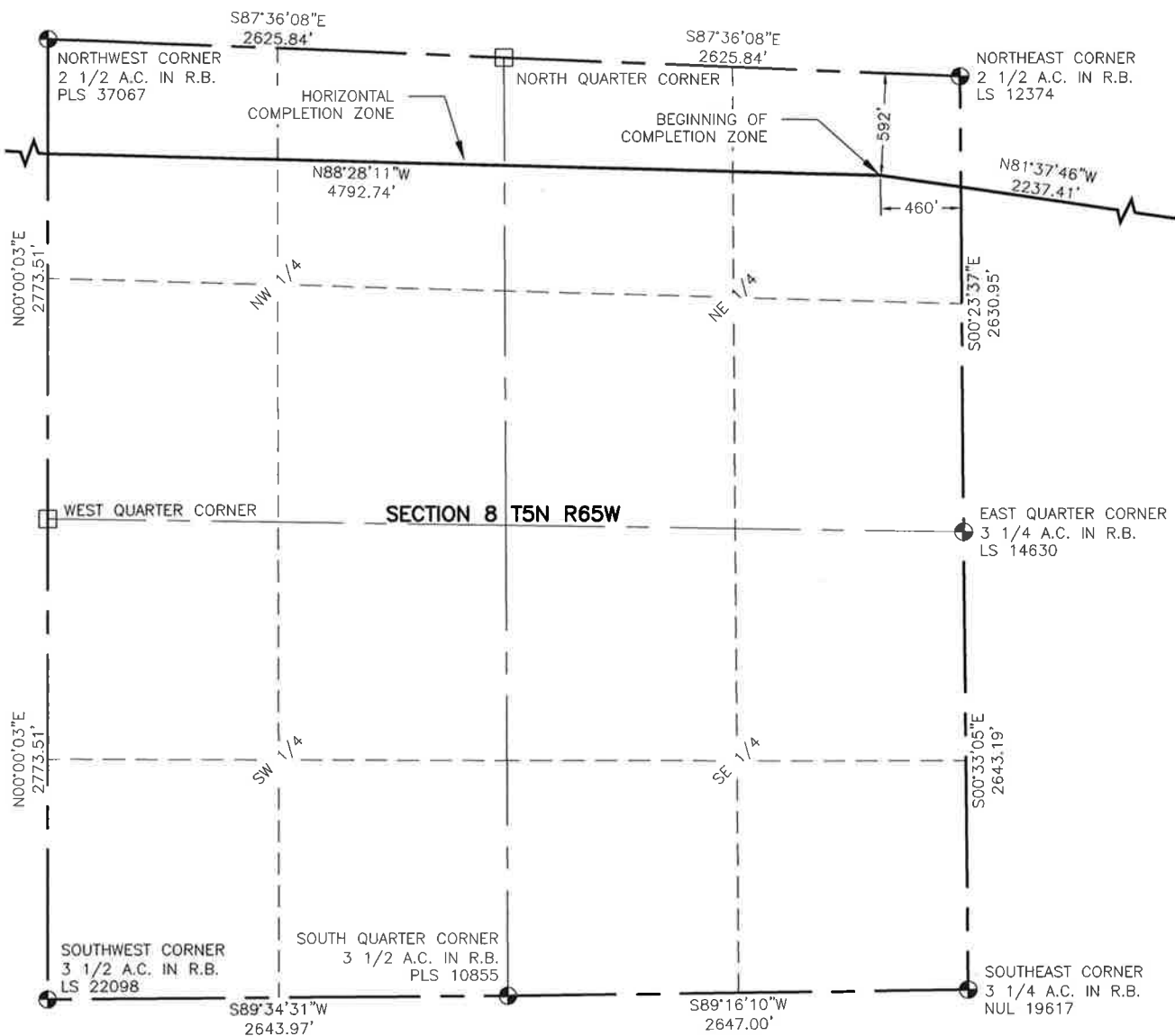


LAMP RYNEARSON & ASSOCIATES

4715 Innovation Drive 970.226.0342 | P
Fort Collins, CO 80525 970.226.0879 | F
www.LRA-Inc.com

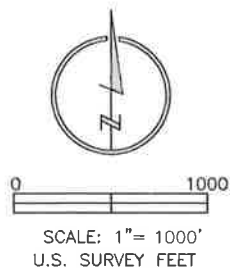
Proposed Well Location Exhibit
MT-MAPLEWOOD 1-8-7
1 OF 3

drawn by JPM	date 3/26/15	cogcc id	project - task number 0210035.00-502	book and page MR01/MR02	surface - location NE/4,NW/4, SEC 9 T5N R65W
path/filename P:_Engineering\0210035 MRI Midtown\DRAWINGS\EXHIBITS\0210035EXWP-0000.dwg					



NOTES:

1. DISTANCES ARE MEASURED PERPENDICULAR TO NEAREST SECTION LINE AND ARE SHOWN ON THE SAME SIDE OF THE SECTION LINE WHERE THE WELL IS LOCATED.
2. THIS MAP DOES NOT REPRESENT A MONUMENTED BOUNDARY SURVEY. SIXTEENTH CORNER LOCATIONS ARE COMPUTED, UNLESS OTHERWISE NOTED.
3. BOTTOM HOLE LOCATIONS AND HORIZONTAL COMPLETION ZONE PROVIDED BY OTHERS.



LEGEND

- | | | | |
|------|--|---|----------------------------------|
| ■ | COMPUTED ALIQUOT CORNER FROM GLO RECORDS | ⊙ | ALIQUOT CORNER |
| A.C. | ALUMINUM CAP | ⊙ | BOTTOM HOLE |
| R.B. | RANGE BOX | ⊙ | PROPOSED WELL |
| | | □ | COMPUTED ALIQUOT CORNER LOCATION |



**LAMP RYNEARSON
& ASSOCIATES**

4715 Innovation Drive 970.226.0342 | P
Fort Collins, CO 80525 970.226.0879 | F
www.LRA-inc.com

Proposed Well Location Exhibit
MT-MAPLEWOOD 1-8-7
2 OF 3

drawn by

JPM

date

3/26/15

cogcc id

project - task number

0210035.00-502

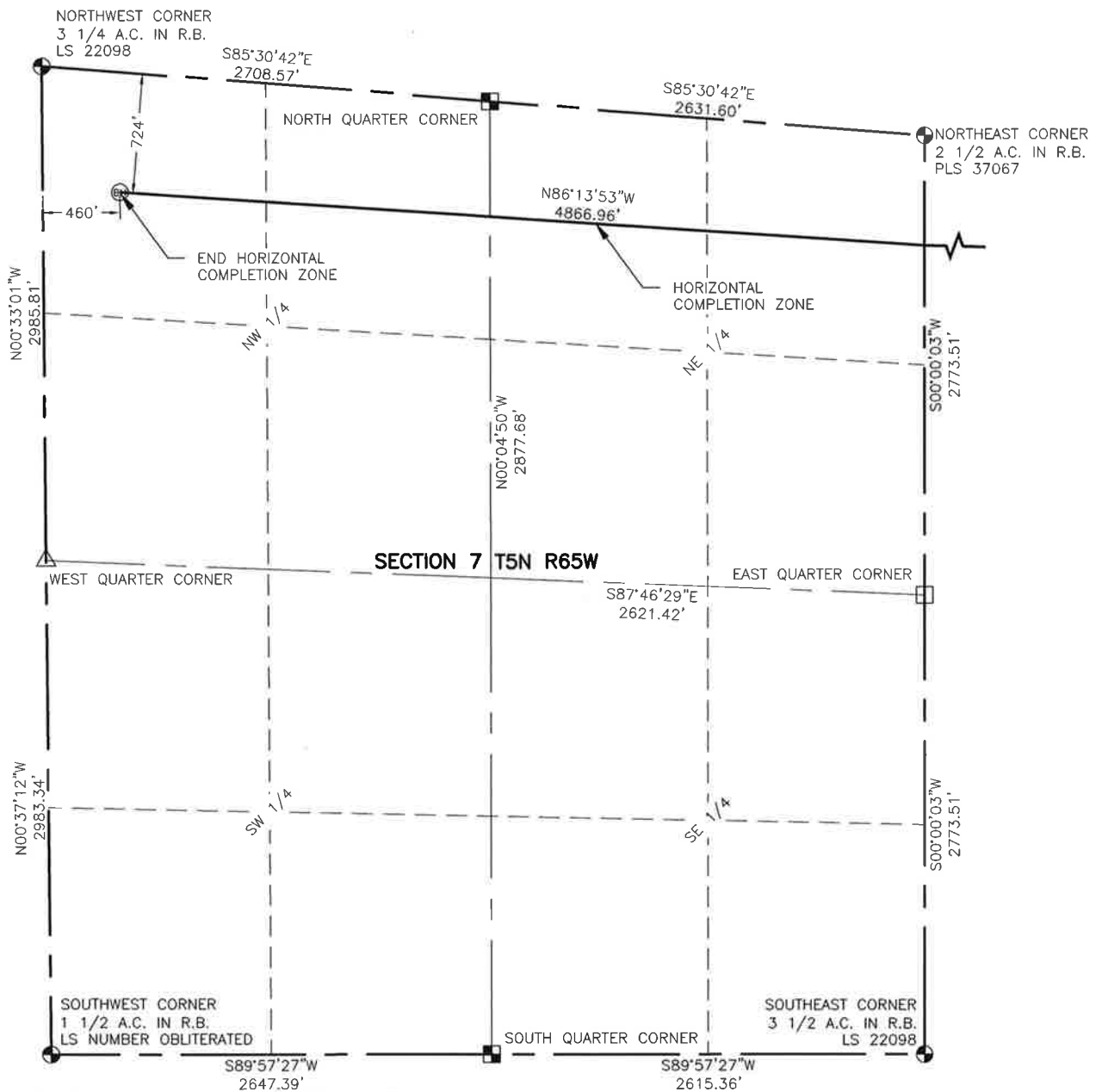
book and page

MR01/MR02

surface - location

NE/4,NW/4, SEC 9 T5N R65W

path/filename P:_Engineering\0210035 MRI Midtown\DRAWINGS\EXHIBITS\0210035EXWP-00Q1.dwg



NOTES:

1. DISTANCES ARE MEASURED PERPENDICULAR TO NEAREST SECTION LINE AND ARE SHOWN ON THE SAME SIDE OF THE SECTION LINE WHERE THE WELL IS LOCATED.
2. THIS MAP DOES NOT REPRESENT A MONUMENTED BOUNDARY SURVEY. SIXTEENTH CORNER LOCATIONS ARE COMPUTED, UNLESS OTHERWISE NOTED.
3. BOTTOM HOLE LOCATIONS AND HORIZONTAL COMPLETION ZONE PROVIDED BY OTHERS.



0 1000

SCALE: 1" = 1000'
U.S. SURVEY FEET

LEGEND

- ALIQUOT CORNER
- ⊙ BOTTOM HOLE
- COMPUTED ALIQUOT CORNER FROM GLO RECORDS
- △ COMPUTED ALIQUOT CORNER FROM MONUMENT ACCESSORIES
- COMPUTED ALIQUOT CORNER LOCATION
- A.C. ALUMINUM CAP
- R.B. RANGE BOX



LAMP RYNEARSON
& ASSOCIATES

4715 Innovation Drive 970.226.0342 | P
Fort Collins, CO 80525 970.226.0879 | F
www.LRA-Inc.com

Proposed Well Location Exhibit
MT-MAPLEWOOD 1-8-7
3 OF 3

drawn by	date	cogcc id	project - task number	book and page	surface - location
JPM	3/26/15		0210035.00-502	MR01/MR02	NE/4,NW/4, SEC 9 T5N R65W
path\filename P:_Engineering\0210035 MRI Midtown\DRAWINGS\EXHIBITS\0210035EXWP-00Q2.dwg					